

Press release

Liebherr mobile crane impresses at Formac with precision, safety and outstanding handling characteristics

- LTM 1110-5.2 impresses Spanish producer of precast concrete elements
- "The new the new LICCON3 crane control system offers us increased performance, precision and safety"
- Fleet expansion planned with Liebherr mobile cranes

In recent months, Formac, S.A., a manufacturer of precast concrete elements in the Spanish province of Ciudad Real, has been working with one of the first delivered examples of the new LTM 1110-5.2 mobile crane. The LICCON3-controlled machine in the new design has already impressed the provider of turnkey industrial halls with its excellent performance as well as its outstanding driving characteristics on the road. High lifting capacities, precision and safety were the decisive criteria for Formac when purchasing its newest mobile crane.

Ehingen (Donau) (Germany), 10 June 2024 – For around six months now, the new Liebherr LTM 1110-5.2 mobile crane from Formac has been proving its worth in continuous operation assembling industrial buildings from concrete elements. South of the capital Madrid, in the autonomous region of Castilla-La Mancha and beyond, the modern 5-axle machine rolls from construction site to construction site. For its debut, the crane was assigned to a construction of an industrial warehouse near Toledo involving unit weights of 22 tonnes. Later, the 110-tonne machine was used to extend a refinery, where a new building also had to be erected.

"We have already erected the pillars and beams and now mainly need to install ten-metre-long concrete slabs for the external cladding," reports Lucinio Gallego, the mobile crane's driver on the construction site. Lucinio lifts the huge wall panels from the newly arrived heavy goods vehicles with his new crane via two-hook operation. "I work with an assembly jib on the telescopic boom and two hook blocks. This allows me to set up the panels, which are delivered horizontally, vertically for the façade installation," he explains. With a maximum radius of 16 metres, the 12-tonne elements are positioned quickly and precisely, and assembled swiftly. He finds working with the new crane a breeze. "The new LICCON3 control system is very good," says Lucinio. "It's very easy to use and I'm very happy with it. The crane works perfectly and without any problems."

"Like a car, only bigger"

A short time later, rapid progress is also being made at another small construction site surrounded by olive groves. Within a few hours, the new crane has finished installing the walls and ceilings of a small building. However, Lucinio is not only satisfied with the handling of his new tool, he is also delighted with the mobile crane's road handling. "This crane is something else," he reports. "Smooth shifting, comfortable cab." The LTM 1110-5.2 features a completely redesigned driver's cab: modern, spacious and ergonomically designed. "On the road, the new crane is simply fantastic. Actually, it's like a car, only bigger. Perfect."

"As we mostly assemble heavy parts in the course of our work, the Liebherr LTM 1110-5.2 mobile crane not only offers us greater reach and precision, but also increases safety, which is a top priority at Formac," says José Luis Urda. The company's commercial manager is extremely satisfied with the new acquisition, not least due to the new crane's working speed. Thanks to the "high quality and reliability of Liebherr products as well as the excellent support from their customer service", Formac will continue to add Liebherr machines to its crane fleet in the future.

Formac, S.A. was founded in 1989 and employs around 170 people, mainly in central Spain, in the manufacture and assembly of concrete structures. The company is a leading supplier of reinforcing steel and precast concrete elements on the Iberian Peninsula. However, Formac has also completed projects in the neighbouring countries of Portugal and France.

About Liebherr-Werk Ehingen GmbH

Liebherr-Werk Ehingen GmbH is a leading manufacturer of mobile and crawler cranes. Its range of mobile cranes extends from 2-axle 35 tonne cranes to heavy duty cranes with a lifting capacity of 1200 tonnes and a 9-axle chassis. Its lattice boom cranes on mobile or crawler travel gear deliver lifting capacities of up to 3000 tonnes. With universal boom systems and extensive auxiliary equipment, they can be seen in action on construction sites throughout the world. The Ehingen site has a workforce of 5,000. An extensive, global service network guarantees the high availability of Liebherr mobile and crawler cranes. In 2023, the Liebherr plant in Ehingen recorded a turnover of 2.81 billion euros.

About the Liebherr Group – 75 years of moving forward

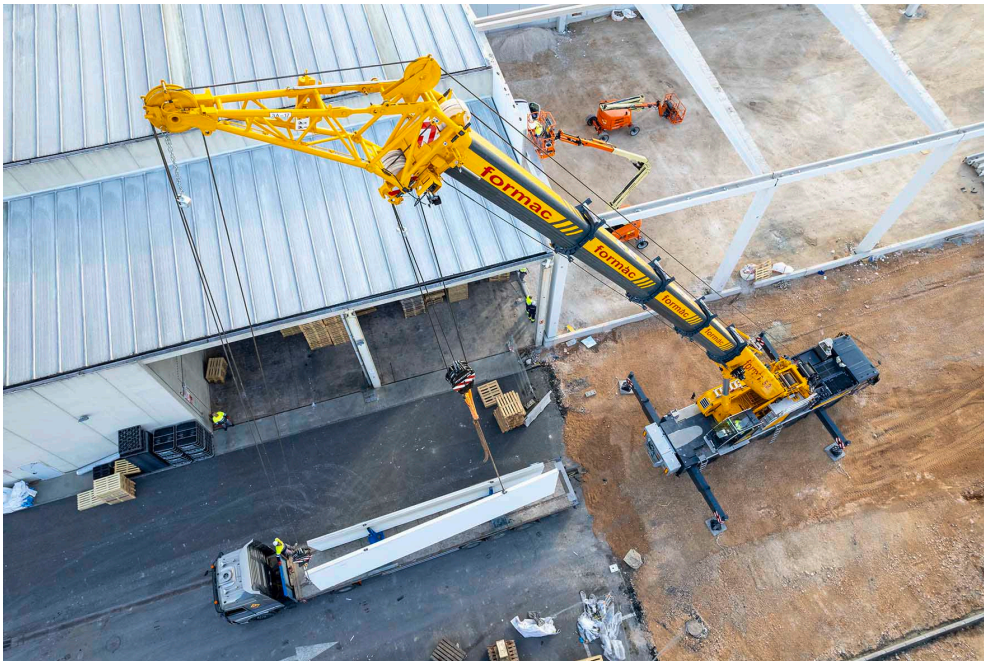
The Liebherr Group is a family-run technology company with a highly diversified product programme. The company is one of the largest construction equipment manufacturers in the world. It also provides high-quality, user-oriented products and services in a wide range of other areas. The Liebherr Group includes over 150 companies across all continents. In 2023, it employed more than 50,000 staff and achieved combined revenues of over 14 billion euros. Liebherr was founded by Hans Liebherr in 1949 in the southern German town of Kirchdorf an der Iller. Since then, the employees have been pursuing the goal of achieving continuous technological innovation, and bringing industry-leading solutions to its customers. Under the slogan '75 years of moving forward', the Group celebrates its 75th anniversary in 2024.

Images



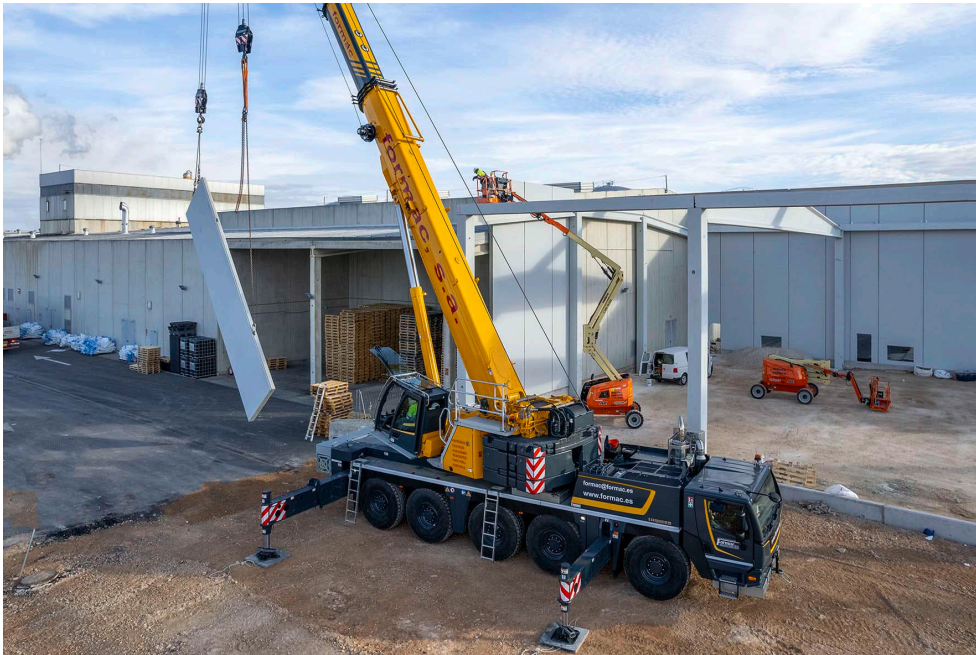
liebherr-ltm1110-5-2-formac-01.jpg

Formac manufactures and builds industrial halls using precast concrete elements: "A good working tool is part of our commitment to our customers."

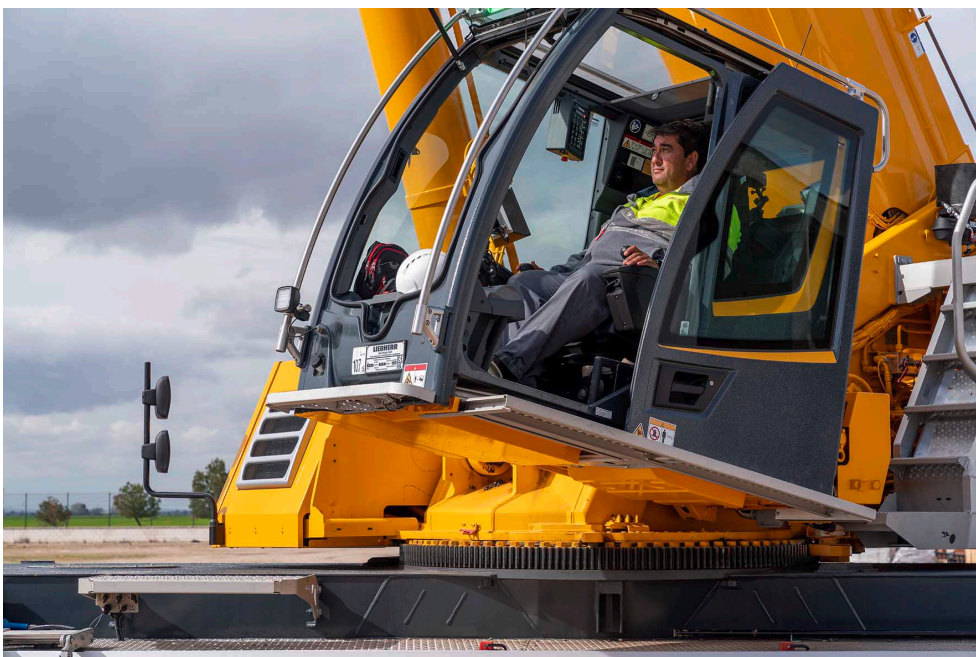


liebherr-ltm1110-5-2-formac-02.jpg

The components are loaded from the transporter using an erection jib in two-hook operation ...



liebherr-ltm1110-5-2-formac-03.jpg
... and swivelled into a vertical position for assembly.



liebherr-ltm1110-5-2-formac-04.jpg
Very happy with his new tool, both on the construction site and on the road: crane driver Lucinio Gallego.



liebherr-ltm1110-5-2-formac-05.jpg

The 12-tonne wall elements were installed at a maximum distance of 16 metres. 29.5 tonnes of ballast were sufficient for this.



liebherr-ltm1110-5-2-formac-06.jpg

The new LTM 1110-5.2 was also tasked with positioning precast concrete elements in the middle of an expansive olive tree plantation.

Contact

Wolfgang Beringer
Marketing and Communication
Phone: +49 7391/502 - 3663
Email: wolfgang.beringer@liebherr.com

Published by

Liebherr-Werk Ehingen GmbH
Ehingen (Donau) / Germany
www.liebherr.com