

---

# R 938 Litronic

---

## LIEBHERR

Crawler excavator



**Generation**

7

**Operating weight**

36,800–39,550 kg

**Engine**

220 kW / 299 HP  
Stage IIIA / Tier 3

**Bucket capacity**

1.00–3.00 m<sup>3</sup>

# Experience the progress R 938

---

## ① Safety

- Panoramic visibility with no obstructions and camera on the rear and the right side
- Tilttable console for easy and safe access to cab
- Emergency exit via the rear cab window whatever the configuration of the excavator
- Right window and windshield in laminated and tinted glass

## ② Equipment

- Choice of 2 types of booms and multiple lengths of equipment
- Longer lifespan of components thanks to a grouping of the lubrication points as standard
- Safety check valves for hoist and stick cylinders (option)

## ③ Maintenance

- Innovative servicing concept, with service points accessible from ground level
- Engine oil, hydraulic oil and fuel levels visible on the display

## ④ Comfort

- Spacious, air-conditioned work space
- Mechanical seat with vertical suspension as standard
- Easy-to-use high resolution 9" colour touchscreen
- Completely retractable front cab window
- LED lighting as standard



## ⑤ Engine

- Liebherr engine equivalent to EU Stage IIIA and EPA Tier 3
- Automatic engine idling and engine stop

## ⑥ Undercarriage

- Choice of 2 different robust and reliable X-shaped undercarriages with integrated eyes for secure transport
- Easy maintenance
- Maintenance-free track chains and track rollers with lifetime lubrication



# Technical data



## Engine

<b>Rating per ISO 9249</b>	220kW (299HP) at 1,800RPM
<b>Torque</b>	1,421 Nm at 1,350RPM
<b>Model</b>	Liebherr D944 A7-23
<b>Type</b>	4 cylinder in-line
<b>Bore</b>	130 mm
<b>Stroke</b>	150 mm
<b>Displacement</b>	8.0l
<b>Engine operation</b>	4-stroke diesel Common-Rail Turbo-charged and after-cooler
<b>Exhaust gas treatment</b>	Engine equivalent to EU Stage IIIA / EPA Tier 3: with EGR
<b>Cooling system</b>	Water-cooled and oil cooler, after-cooled and fuel cooled
<b>Air cleaner</b>	Dry-type air cleaner with pre-cleaner
<b>Fuel tank</b>	729l
<b>Electrical system</b>	
<b>Voltage</b>	24V
<b>Batteries</b>	2 x 135Ah / 12V
<b>Alternator</b>	Three-phase current 28V / 140A
<b>Engine idling</b>	Sensor controlled



## Hydraulic controls

<b>Power distribution</b>	Via control valves, simultaneous and independent actuation of undercarriage, swing drive and equipment
<b>Electric servo circuit</b>	Electro-hydraulic control
<b>Equipment and swing</b>	Proportional via joystick levers
<b>Travel</b>	- Proportional control via foot pedals or removable levers - Automatic or manual speed adjustment
<b>Additional functions</b>	Proportional regulation via foot pedals or mini-joystick



## Hydraulic system

<b>Hydraulic system</b>	Positive Control hydraulic system. Demand-based, double independent pump flows Features high system dynamics and sensitivity provided by integrated system controlling Independent circuit for rotation
<b>Hydraulic pumps</b>	
<b>For equipment and travel drive</b>	Liebherr, variable displacement, swashplate double pump
<b>Max. flow</b>	2 x 315l/min.
<b>Max. pressure</b>	380bar
<b>For swing drive</b>	Swashplate pump, closed-loop circuit
<b>Max. flow</b>	205l/min.
<b>Max. pressure</b>	400bar
<b>Pump management</b>	Electronic management synchronous to the control block
<b>Hydraulic tank</b>	239l
<b>Hydraulic system</b>	max. 475l
<b>Filtration</b>	1 main return filter with integrated partial micro filtration (10µm)
<b>Cooling system</b>	Compact cooler, consisting of a water cooler, with hydraulic oil cooler, gearbox oil cooler, fuel cooler and after-cooler cores and hydrostatically driven fan
<b>MODE selection</b>	Adjustment of engine and hydraulic performance via a mode pre-selector to match application, e.g. for especially economical and environmentally friendly operation or for maximum digging performance and heavy-duty jobs
<b>Engine speed and performance setting</b>	Stepless adjustment of engine output and hydraulic power via engine speed



## Swing drive

<b>Drive</b>	Liebherr swashplate motor with integrated brake valve and torque control
<b>Transmission</b>	Liebherr compact planetary reduction gears
<b>Swing ring</b>	Liebherr, sealed race ball bearing swing ring, internal teeth
<b>Swing speed</b>	0-8.6RPM stepless
<b>Swing torque</b>	117 kNm
<b>Holding brake</b>	Wet multi-disc (spring applied, pressure released)



## Cab

<b>Cab</b>	ROPS safety cab structure optional (roll-over protection system according to ISO 12117-2:2008) with windscreen, totally or partially retractable (only upper part), under cab roof, LED work headlights integrated in the ceiling, a door with a sliding window (can be opened on both sides), large storing box and several stowing possibilities, shock-absorbing suspension, laminated right hand side and roof windows, all windows tinted, separate extensible window shades for the sunroof window and windscreen, cigarette lighter and 24 V plug, cup holder, mobile phone storage net
<b>Operator's seat</b>	Liebherr-Standard seat, mechanically suspended with weight adjustment, vertical seat damping including consoles and joysticks. Seat and armrests adjustable separately and in combination (adjustable in length, height, and inclination)
Option	Liebherr-Comfort seat, airsprung with automatic weight adjustment, vertical and longitudinal seat damping including consoles and joysticks, with seat heating
<b>Arm consoles</b>	Oscillating consoles with seat, tilttable console left
<b>Operation and displays</b>	Large high-resolution operating unit, intuitive, colour display with touchscreen, video-compatible, numerous setting, control and monitoring options, e.g. air conditioning control, fuel consumption, machine and attachment parameters
<b>Air-conditioning</b>	Automatic air-conditioning, recirculated air function, fast de-icing and demisting at the press of a button, air vents can be operated via a menu. Recirculated air and fresh air filters can be easily replaced and are accessible from the outside. Heating-cooling unit, designed for extreme outside temperatures, sensors for solar radiation, inside and outside temperatures
<b>Noise emission</b>	
ISO 6396	80 dB(A) = L <sub>PA</sub> (inside cab)
2000/14/EC	107 dB(A) = L <sub>WA</sub> (surround noise)



## Undercarriage

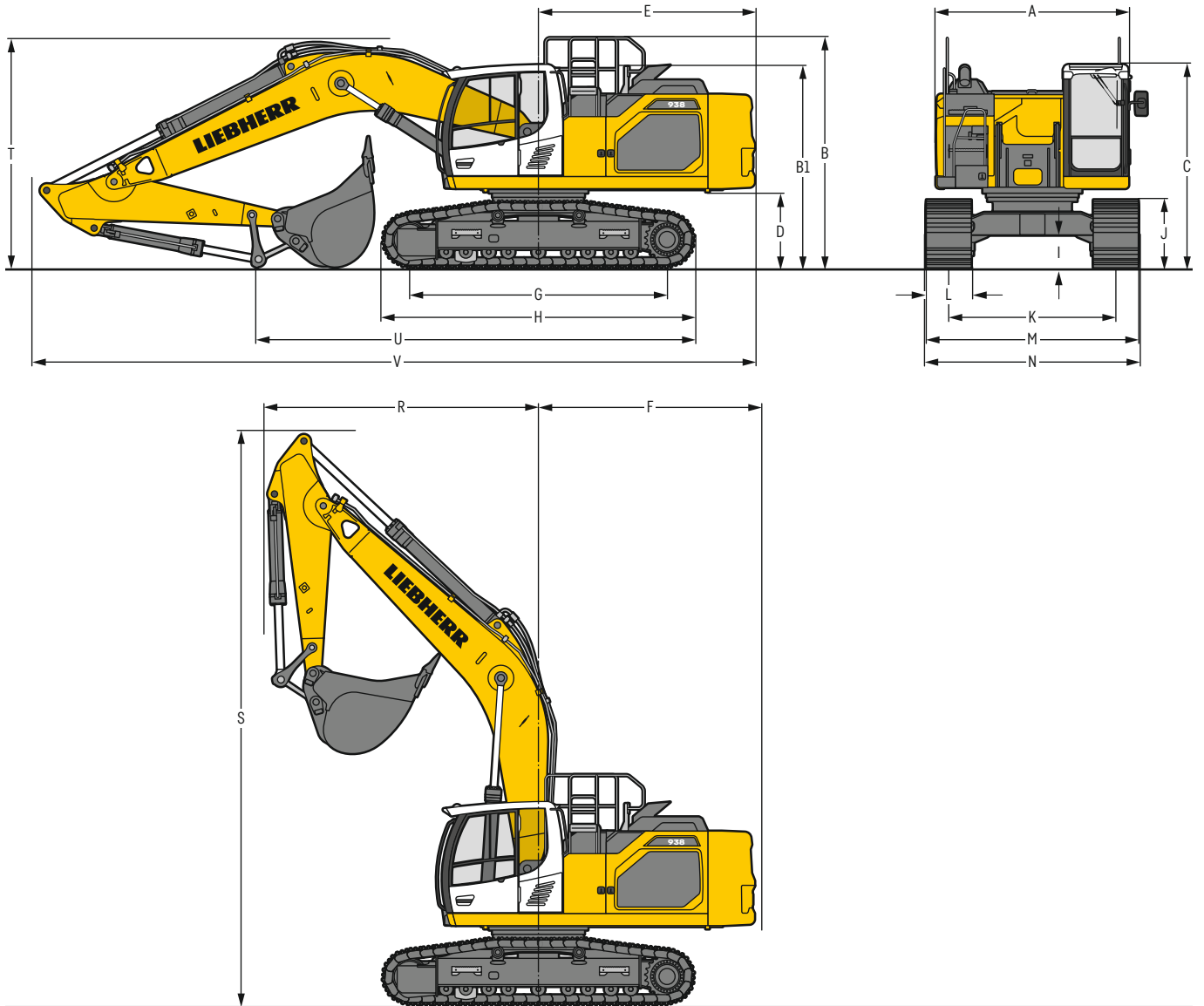
<b>Versions</b>	
LC	Gauge 2,590 mm
WLC	Gauge 2,740 mm
<b>Drive</b>	Liebherr swashplate motor with brake valves on both sides
<b>Transmission</b>	Liebherr planetary reduction gear
<b>Maximum travel speed</b>	3.3 km/h low range 5.4 km/h high range
<b>Drawbar pull on crawler</b>	325 kN
<b>Track components</b>	D7, D7G, maintenance-free
<b>Track rollers / Carrier rollers</b>	9 / 2
<b>Tracks</b>	Sealed and greased
<b>Track pads</b>	Triple grouser
<b>Holding brake</b>	Wet multi-disc (spring applied, pressure released)
<b>Brake valves</b>	Integrated into travel motor
<b>Lashing eyes</b>	Integrated



## Equipment

<b>Type</b>	Combination of resistant steel plates and cast steel components
<b>Hydraulic cylinders</b>	Liebherr cylinders with seal and guidance systems
<b>Bearings</b>	Sealed, low maintenance
<b>Lubrication</b>	Liebherr central lubrication system
<b>Hydraulic connections</b>	Pipes and hoses equipped with SAE split-flange connections
<b>Buckets</b>	Standard equipped with Liebherr tooth system

# Dimensions



	LC	mm				WLC	mm			
A	Uppercarriage width	2,990 <sup>2)</sup>					2,990 <sup>2)</sup>			
B	Uppercarriage height	3,570					3,570			
B1	Uppercarriage height (handrails folded)	3,130					3,130			
C	Cab height	3,150					3,150			
D	Counterweight ground clearance	1,175					1,175			
E	Rear-end length	3,350					3,350			
F	Tail swing radius	3,450					3,450			
G	Wheelbase	3,990					4,300			
H	Undercarriage length	4,840					5,150			
I	Undercarriage ground clearance	495					495			
J	Track height	1,055					1,055			
K	Track gauge	2,590					2,740			
L	Track pad width	600	700	800	900	600	700	800	900	
M	Width over tracks	3,190	3,290	3,390	3,490	3,340	3,440	3,540	3,640	
N	Width over steps	3,190	3,190	3,390 <sup>1)</sup>	3,390 <sup>1)</sup>	3,340	3,340	3,540 <sup>1)</sup>	3,540 <sup>1)</sup>	

<sup>1)</sup> width with removable steps

<sup>2)</sup> without door stop device and spacer

	Stick length m	Mono boom 6.45 m direct mounting			Mono boom SME 6.15 m direct mounting		
		LC	mm	WLC	LC	mm	WLC
<b>R</b> Front swing radius			4,250 <sup>1)</sup>		4,050		
<b>S</b> Height with boom up			8,900		8,700		
<b>T</b> Boom height	2.60		3,550		-		
	2.90		3,750		-		
	3.25		3,800		-		
	3.95		3,350 <sup>1)</sup>		-		
	2.15 SME		-		3,450 / 3,300 <sup>1)</sup>		3,350 / 3,300 <sup>1)</sup>
	2.60 SME		-		3,650 / 3,350 <sup>1)</sup>		3,950 / 3,350 <sup>1)</sup>
<b>U</b> Length on ground	2.60	6,800		6,950		-	
	2.90	6,500		6,650		-	
	3.25	6,050		6,200		-	
	3.95	7,800 <sup>1)</sup>		7,950 <sup>1)</sup>		-	
	2.15 SME		-		6,900 / 9,300 <sup>1)</sup>		7,000 / 9,450 <sup>1)</sup>
	2.60 SME		-		6,500 / 8,900 <sup>1)</sup>		6,800 / 9,050 <sup>1)</sup>
<b>V</b> Overall length	2.60		11,200				
	2.90		11,200				
	3.25		11,200				
	3.95		11,000 <sup>1)</sup>				
	2.15 SME		-		10,900 / 10,800 <sup>1)</sup>		
	2.60 SME		-		10,900 / 10,800 <sup>1)</sup>		
Bucket			2.15 m <sup>3</sup>				2.50 m <sup>3</sup>

<sup>1)</sup> without bucket

## Transport dimensions

### removable elements disassembled

	Undercarriage	Mono boom 6.45 m				Mono boom SME 6.15 m			
		mm				mm			
Pad width		600	700	800	900	600	700	800	900
Transport width	LC	3,190	3,290	3,390	3,490	3,190	3,290	3,390	3,490
	WLC	3,340	3,440	3,540	3,640	3,340	3,440	3,540	3,640

	Undercarriage/ Stick m	LC / WLC		LC / WLC	
		mm		mm	
Transport length		11,200 <sup>2)</sup> / 11,000 <sup>1) 3)</sup>		10,900 / 10,800 <sup>1)</sup>	
Transport height	2.60	3,550		-	
	2.90	3,750		-	
	3.25	3,800		-	
	3.95	3,350 <sup>1)</sup>		-	
	2.15 SME	-		3,450 <sup>4)</sup> / 3,300 <sup>1) 4)</sup> / 3,350 <sup>5)</sup> / 3,300 <sup>1) 5)</sup>	
2.60 SME	-		3,650 <sup>4)</sup> / 3,350 <sup>1) 4)</sup> / 3,950 <sup>5)</sup> / 3,350 <sup>1) 5)</sup>		
Bucket		2.15 m <sup>3</sup>		2.50 m <sup>3</sup>	

<sup>1)</sup> without bucket

<sup>2)</sup> with sticks 2.60 m, 2.90 m and 3.25 m

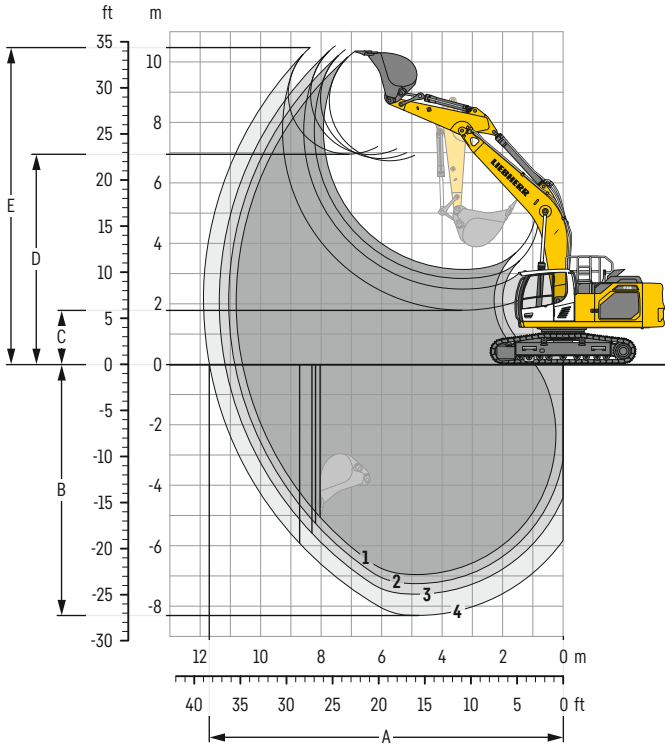
<sup>3)</sup> with stick 3.95 m

<sup>4)</sup> with LC undercarriage

<sup>5)</sup> with WLC undercarriage

# Backhoe bucket

with mono boom 6.45 m



## Digging envelope

without quick coupler		1	2	3	4
Stick length	m	2.60	2.90	3.25	3.95
A Max. reach at ground level	m	10.60	10.85	11.17	11.70
B Max. digging depth	m	6.95	7.25	7.60	8.30
C Min. dumping height	m	3.14	2.84	2.49	1.79
D Max. dumping height	m	6.73	6.80	6.93	6.95
E Max. cutting height	m	10.35	10.40	10.53	10.47

## Forces

without quick coupler		1	2	3	4
Stick digging force (ISO 6015)	kN	212	198	183	159
Bucket digging force (ISO 6015)	kN	238	238	238	238
Stick digging force (SAE J1179)	kN	202	189	176	154
Bucket digging force (SAE J1179)	kN	210	210	210	210

## Operating weight and ground pressure

The operating weight includes the basic machine with counterweight 8.4t, mono boom 6.45 m, stick 3.25 m and bucket 2.15 m<sup>3</sup> (1,770 kg).

Undercarriage		LC			
Pad width	mm	600	700	800	900
Weight	kg	36,800	37,150	37,500	37,850
Ground pressure	kg/cm <sup>2</sup>	0.72	0.62	0.55	0.49

Undercarriage		WLC			
Pad width	mm	600	700	800	900
Weight	kg	37,350	37,700	38,050	38,450
Ground pressure	kg/cm <sup>2</sup>	0.68	0.59	0.52	0.46

The operating weight includes the basic machine with counterweight 9.4t, mono boom 6.45 m, stick 3.25 m and bucket 2.15 m<sup>3</sup> (1,770 kg).

Undercarriage		LC			
Pad width	mm	600	700	800	900
Weight	kg	37,800	38,150	38,500	38,850
Ground pressure	kg/cm <sup>2</sup>	0.73	0.64	0.56	0.50

Undercarriage		WLC			
Pad width	mm	600	700	800	900
Weight	kg	38,350	38,700	39,050	39,450
Ground pressure	kg/cm <sup>2</sup>	0.70	0.60	0.53	0.48



**Buckets** Machine stability per ISO 10567\* (75% of tipping capacity)

Cutting width mm	Capacity ISO 7451 m <sup>3</sup>	Weight <sup>3)</sup> kg	Weight <sup>4)</sup> kg	LC undercarriage (with track pads 600 mm)								WLC undercarriage (with track pads 600 mm)							
				Stick length (m)				Stick length (m)				Stick length (m)				Stick length (m)			
				without quick coupler		with quick coupler		without quick coupler		with quick coupler		without quick coupler		with quick coupler		without quick coupler		with quick coupler	
2.60	2.90	3.25	3.95	2.60	2.90	3.25	3.95	2.60	2.90	3.25	3.95	2.60	2.90	3.25	3.95				
<b>with counterweight 8.4 t</b>																			
STD <sup>1)</sup>	1,050	1.00	1,310	1,270	▲	▲	▲	▲	▲	▲	▲	▲	▲	▲	▲	▲	▲	▲	▲
	1,200	1.25	1,420	1,380	▲	▲	▲	▲	▲	▲	▲	▲	▲	▲	▲	▲	▲	▲	▲
	1,350	1.50	1,530	1,490	▲	▲	▲	▲	▲	▲	▲	▲	▲	▲	▲	▲	▲	▲	▲
	1,500	1.75	1,630	1,590	▲	▲	▲	▲	▲	▲	▲	▲	▲	▲	▲	▲	▲	▲	▲
	1,600	1.90	1,700	1,660	▲	▲	▲	■	▲	▲	▲	▲	▲	▲	▲	▲	▲	▲	■
	1,650	2.00	1,730	1,690	▲	▲	■	■	▲	▲	▲	■	■	▲	▲	▲	▲	▲	▲
	1,600	2.15	1,770	1,730	▲	■	■	■	▲	▲	■	■	■	▲	▲	▲	■	■	▲
	1,650	2.25	1,810	1,770	▲	■	▲	■	■	■	▲	▲	▲	▲	▲	■	■	■	■
	1,800	2.50	1,900	1,860	▲	▲	■	▲	▲	■	▲	▲	▲	■	■	▲	■	■	▲
	1,800	2.75	1,970	1,930	■	■	▲	△	-	■	▲	▲	▲	▲	■	■	▲	▲	▲
1,850	3.00	2,020	1,980	△	△	△	-	-	△	△	-	-	■	△	△	-	■	△	-
HD <sup>2)</sup>	1,050	1.00	1,410	1,370	▲	▲	▲	▲	▲	▲	▲	▲	▲	▲	▲	▲	▲	▲	▲
	1,200	1.25	1,510	1,470	▲	▲	▲	▲	▲	▲	▲	▲	▲	▲	▲	▲	▲	▲	▲
	1,350	1.50	1,620	1,580	▲	▲	▲	▲	▲	▲	▲	▲	▲	▲	▲	▲	▲	▲	▲
	1,500	1.75	1,730	1,690	▲	▲	▲	■	▲	▲	▲	▲	▲	▲	▲	▲	▲	▲	▲
	1,600	1.90	1,800	1,760	▲	▲	▲	▲	▲	▲	▲	■	■	▲	▲	▲	▲	▲	■
	1,650	2.00	1,830	1,790	▲	▲	■	■	▲	▲	▲	▲	▲	▲	▲	▲	■	■	▲
	1,600	2.15	1,870	1,830	▲	■	▲	■	▲	▲	■	■	▲	▲	▲	▲	■	■	■
	1,650	2.25	1,910	1,870	■	■	▲	▲	▲	■	■	■	▲	▲	▲	■	■	▲	■
	1,800	2.50	2,000	1,960	▲	■	■	▲	▲	■	■	▲	▲	■	■	▲	■	■	▲
	1,800	2.75	2,080	2,040	■	▲	▲	△	-	■	▲	▲	▲	▲	▲	■	■	▲	▲
1,850	3.00	2,130	2,090	△	△	△	-	-	△	△	-	-	■	△	△	-	■	△	-
<b>with counterweight 9.4 t</b>																			
STD <sup>1)</sup>	1,050	1.00	1,310	1,270	▲	▲	▲	▲	▲	▲	▲	▲	▲	▲	▲	▲	▲	▲	▲
	1,200	1.25	1,420	1,380	▲	▲	▲	▲	▲	▲	▲	▲	▲	▲	▲	▲	▲	▲	▲
	1,350	1.50	1,530	1,490	▲	▲	▲	▲	▲	▲	▲	▲	▲	▲	▲	▲	▲	▲	▲
	1,500	1.75	1,630	1,590	▲	▲	▲	▲	▲	▲	▲	▲	▲	▲	▲	▲	▲	▲	▲
	1,600	1.90	1,700	1,660	▲	▲	▲	▲	▲	▲	▲	▲	■	▲	▲	▲	▲	▲	▲
	1,650	2.00	1,730	1,690	▲	▲	▲	■	▲	▲	▲	▲	▲	▲	▲	▲	▲	▲	▲
	1,600	2.15	1,770	1,730	▲	▲	▲	▲	▲	▲	▲	■	■	▲	▲	▲	▲	▲	■
	1,650	2.25	1,810	1,770	▲	▲	■	▲	▲	▲	▲	■	■	▲	▲	▲	▲	▲	▲
	1,800	2.50	1,900	1,860	■	■	■	▲	▲	■	■	■	▲	▲	■	■	■	■	■
	1,800	2.75	1,970	1,930	▲	▲	▲	▲	▲	▲	■	■	▲	▲	▲	▲	■	■	▲
1,850	3.00	2,020	1,980	■	■	▲	▲	▲	■	▲	▲	▲	▲	▲	■	■	▲	▲	
HD <sup>2)</sup>	1,050	1.00	1,410	1,370	▲	▲	▲	▲	▲	▲	▲	▲	▲	▲	▲	▲	▲	▲	▲
	1,200	1.25	1,510	1,470	▲	▲	▲	▲	▲	▲	▲	▲	▲	▲	▲	▲	▲	▲	▲
	1,350	1.50	1,620	1,580	▲	▲	▲	▲	▲	▲	▲	▲	▲	▲	▲	▲	▲	▲	▲
	1,500	1.75	1,730	1,690	▲	▲	▲	▲	▲	▲	▲	▲	▲	▲	▲	▲	▲	▲	▲
	1,600	1.90	1,800	1,760	▲	▲	▲	▲	▲	▲	▲	▲	■	▲	▲	▲	▲	▲	▲
	1,650	2.00	1,830	1,790	▲	▲	▲	■	▲	▲	▲	▲	▲	▲	▲	▲	▲	▲	■
	1,600	2.15	1,870	1,830	▲	▲	■	▲	▲	▲	■	■	▲	▲	▲	▲	▲	▲	■
	1,650	2.25	1,910	1,870	▲	▲	■	▲	▲	■	■	■	▲	▲	▲	▲	▲	▲	■
	1,800	2.50	2,000	1,960	■	■	■	▲	▲	■	■	■	▲	▲	■	■	■	■	▲
	1,800	2.75	2,080	2,040	▲	■	■	▲	▲	▲	■	■	▲	▲	▲	■	■	■	▲
1,850	3.00	2,130	2,090	■	▲	▲	-	-	■	▲	▲	-	-	▲	■	▲	▲	▲	

\* Indicated loads are based on ISO 10567, at maximum reach, and may be swung 360° on firm and even ground

<sup>1)</sup> Standard bucket with teeth Z 50

<sup>2)</sup> HD bucket with teeth Z 50

<sup>3)</sup> Bucket for direct mounting

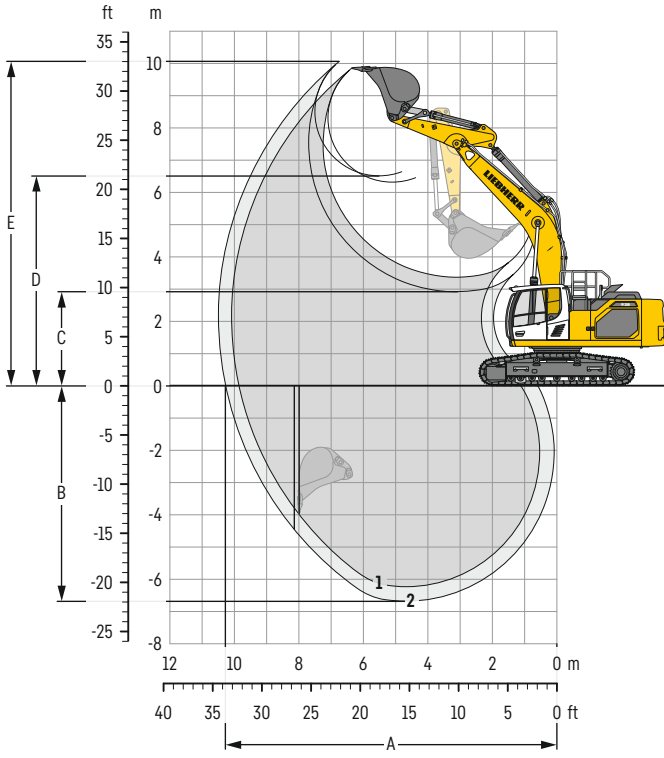
<sup>4)</sup> Bucket for mounting to quick coupler SWA 66 (430 kg)

Other buckets available upon request

Max. material weight ▲ = ≤ 2.0t/m<sup>3</sup>, ■ = ≤ 1.8t/m<sup>3</sup>, ▲ = ≤ 1.65t/m<sup>3</sup>, ■ = ≤ 1.5t/m<sup>3</sup>, △ = ≤ 1.2t/m<sup>3</sup>, - = not authorised

# Backhoe bucket

with mono boom SME 6.15 m



## Digging envelope

without quick coupler		1	2
Stick length	m	2.15	2.60
		SME	SME
A Max. reach at ground level	m	9.86	10.28
B Max. digging depth	m	6.23	6.68
C Min. dumping height	m	3.37	2.92
D Max. dumping height	m	6.32	6.61
E Max. cutting height	m	9.86	10.06

## Forces

without quick coupler		1	2
Stick digging force (ISO 6015)	kN	238	212
Bucket digging force (ISO 6015)	kN	264	264
Stick digging force (SAE J1179)	kN	226	202
Bucket digging force (SAE J1179)	kN	233	233

## Operating weight and ground pressure

The operating weight includes the basic machine with counterweight 8.4 t, mono boom SME 6.15 m, stick SME 2.15 m and HD bucket 2.50 m<sup>3</sup> (2,000 kg).

Undercarriage		LC			
Pad width	mm	600	700	800	900
Weight	kg	36,900	37,250	37,600	37,950
Ground pressure	kg/cm <sup>2</sup>	0.72	0.62	0.55	0.49

Undercarriage		WLC			
Pad width	mm	600	700	800	900
Weight	kg	37,450	37,800	38,150	38,550
Ground pressure	kg/cm <sup>2</sup>	0.68	0.59	0.52	0.47

The operating weight includes the basic machine with counterweight 9.4 t, mono boom SME 6.15 m, stick SME 2.15 m and HD bucket 2.50 m<sup>3</sup> (2,000 kg).

Undercarriage		LC			
Pad width	mm	600	700	800	900
Weight	kg	37,900	38,250	38,600	38,950
Ground pressure	kg/cm <sup>2</sup>	0.74	0.64	0.56	0.50

Undercarriage		WLC			
Pad width	mm	600	700	800	900
Weight	kg	38,450	38,800	39,150	39,550
Ground pressure	kg/cm <sup>2</sup>	0.70	0.60	0.53	0.48

**Buckets** Machine stability per ISO 10567\* (75% of tipping capacity)

Cutting width mm	Capacity ISO 7451 m <sup>3</sup>	Weight <sup>3)</sup> kg	Weight <sup>4)</sup> kg	LC undercarriage (with track pads 600 mm)				WLC undercarriage (with track pads 600 mm)			
				Stick length (m)				Stick length (m)			
				without quick coupler		with quick coupler		without quick coupler		with quick coupler	
2.15	2.60	2.15	2.60	2.15	2.60	2.15	2.60				
<b>with counterweight 8.4 t</b>											
HD <sup>1)</sup>	1,600	2.15	1,870	1,830	▲	▲	▲	▲	▲	▲	▲
	1,650	2.25	1,910	1,870	▲	▲	▲	▲	▲	▲	▲
	1,800	2.50	2,000	1,960	▲	■	▲	▲	▲	▲	■
	1,800	2.75	2,080	2,040	■	■	■	■	▲	▲	▲
	1,850	3.00	2,130	2,090	▲	△	■	△	■	■	■
HDR <sup>2)</sup>	1,650	2.00	2,490	2,530	▲	▲	▲	▲	▲	▲	▲
	1,650	2.25	2,570	2,610	▲	■	▲	▲	▲	■	▲
	1,650	2.50	2,660	2,700	■	■	▲	■	▲	■	▲
<b>with counterweight 9.4 t</b>											
HD <sup>1)</sup>	1,600	2.15	1,870	1,830	▲	▲	▲	▲	▲	▲	▲
	1,650	2.25	1,910	1,870	▲	▲	▲	▲	▲	▲	▲
	1,800	2.50	2,000	1,960	▲	▲	▲	■	▲	▲	▲
	1,800	2.75	2,080	2,040	▲	■	▲	▲	▲	■	■
	1,850	3.00	2,130	2,090	■	▲	■	■	▲	■	▲
HDR <sup>2)</sup>	1,650	2.00	2,490	2,530	▲	▲	▲	▲	▲	▲	▲
	1,650	2.25	2,570	2,610	▲	▲	▲	■	▲	▲	■
	1,650	2.50	2,660	2,700	▲	■	▲	▲	▲	▲	■

\* Indicated loads are based on ISO 10567, at maximum reach, and may be swung 360° on firm and even ground

<sup>1)</sup> HD bucket with teeth Z 50

<sup>2)</sup> HDR bucket with teeth Z 70

<sup>3)</sup> Bucket for direct mounting

<sup>4)</sup> Bucket for mounting to quick coupler SWA 66 (430 kg)

Other buckets available upon request

Max. material weight ▲ = ≤ 2.0t/m<sup>3</sup>, ■ = ≤ 1.8t/m<sup>3</sup>, ▲ = ≤ 1.65t/m<sup>3</sup>, ■ = ≤ 1.5t/m<sup>3</sup>, △ = ≤ 1.2t/m<sup>3</sup>

# Lift capacities

with mono boom 6.45 m, counterweight 8.4 t and track pads 600 mm

## Stick 2.60 m

Under-carriage m	3.0m		4.5m		6.0m		7.5m		9.0m		m		
7.5					10.0*	10.0*					8.5	9.9*	6.9
6.0					10.5	10.6*					6.8	9.6*	7.9
4.5			15.2*	15.2*	10.0	11.8*	7.2	10.2*			5.9	8.7	8.5
3.0			13.9	18.4*	9.4	13.3*	6.9	10.3			5.5	8.1	8.8
1.5			13.2	16.5*	8.9	13.9	6.6	10.0			5.3	7.9	8.8
0			13.0	19.6*	8.7	13.6	6.5	9.8			5.4	8.1	8.6
-1.5	15.0*	15.0*	13.0	18.4*	8.6	13.5	6.4	9.8			5.9	8.9	8.0
-3.0	20.1*	20.1*	13.3	16.2*	8.7	12.6*					7.0	10.1*	7.1
-4.5			12.2*	12.2*							9.4*	9.4*	5.7
-6.0													
7.5					10.0*	10.0*					9.0	9.9*	6.9
6.0					10.6*	10.6*	7.9	9.7*			7.2	9.6*	7.9
4.5			15.2*	15.2*	10.7	11.8*	7.6	10.2*			6.3	9.6*	8.5
3.0			15.0	18.4*	10.1	13.3*	7.3	10.8*			5.8	9.0	8.8
1.5			14.3	16.5*	9.6	14.3*	7.1	11.1			5.7	8.8	8.8
0			14.1	19.6*	9.3	14.7*	6.9	10.9			5.8	9.0	8.6
-1.5	15.0*	15.0*	14.1	18.4*	9.3	14.2*	6.9	10.9			6.3	9.9	8.0
-3.0	20.1*	20.1*	14.4	16.2*	9.4	12.6*					7.5	10.1*	7.1
-4.5			12.2*	12.2*							9.4*	9.4*	5.7
-6.0													

## Stick 2.90 m

Under-carriage m	3.0m		4.5m		6.0m		7.5m		9.0m		m		
7.5											8.0	9.3*	7.2
6.0											6.4	9.1*	8.2
4.5			14.5*	14.5*	10.2*	10.2*	7.4	9.3*			5.6	8.3	8.7
3.0			14.1	17.7*	9.4	12.9*	6.9	10.3	5.3	7.8	5.2	7.8	9.0
1.5			13.2	19.6*	8.9	13.9	6.6	10.0	5.1	7.6	5.1	7.6	9.0
0			12.9	19.7*	8.6	13.6	6.4	9.8			5.2	7.8	8.8
-1.5	15.0*	15.0*	12.9	18.7*	8.5	13.4	6.4	9.7			5.6	8.4	8.3
-3.0	21.6*	21.6*	13.1	16.7*	8.6	13.0*					6.5	9.9	7.5
-4.5	16.5*	16.5*	13.1*	13.1*	9.0	9.8*					8.7	9.5*	6.1
-6.0													
7.5											8.5	9.3*	7.2
6.0					10.2*	10.2*	7.9	9.3*			6.9	9.1*	8.2
4.5			14.5*	14.5*	10.7	11.4*	7.7	9.9*			6.0	9.2*	8.7
3.0			15.2	17.7*	10.1	12.9*	7.4	10.6*	5.6	8.6	5.6	8.6	9.0
1.5			14.3	19.6*	9.6	14.1*	7.1	11.1	5.5	8.5	5.4	8.4	9.0
0			14.0	19.7*	9.3	14.6*	6.9	10.9			5.6	8.6	8.8
-1.5	15.0*	15.0*	14.0	18.7*	9.2	14.3*	6.8	10.8			6.0	9.4	8.3
-3.0	21.6*	21.6*	14.2	16.7*	9.3	13.0*					7.0	9.9*	7.5
-4.5	16.5*	16.5*	13.1*	13.1*	9.6	9.8*					9.4	9.5*	6.1
-6.0													

## Stick 3.25 m

Under-carriage m	3.0m		4.5m		6.0m		7.5m		9.0m		m		
7.5							7.6	8.8*			7.3	8.1*	7.6
6.0							7.5	8.9*			6.0	8.0*	8.5
4.5			13.6*	13.6*	10.1	10.9*	7.2	9.5*	5.4	7.9	5.3	7.8	9.1
3.0			14.3	16.9*	9.5	12.4*	6.9	10.2*	5.2	7.8	4.9	7.3	9.3
1.5			13.3	19.1*	8.9	13.7*	6.6	9.9	5.1	7.6	4.8	7.2	9.4
0			12.8	19.7*	8.6	13.5	6.3	9.7	5.0	7.5	4.9	7.3	9.1
-1.5	14.5*	14.5*	12.8	19.0*	8.4	13.3	6.2	9.6			5.2	7.9	8.6
-3.0	22.8*	22.8*	12.9	17.3*	8.5	13.2*	6.3	9.6			6.0	9.1	7.8
-4.5	18.3*	18.3*	13.3	14.1*	8.7	10.7*					7.8	9.4*	6.6
-6.0													
7.5							8.0	8.8*			7.8	8.1*	7.6
6.0							7.9	8.9*			6.4	8.0*	8.5
4.5			13.6*	13.6*	10.8	10.9*	7.7	9.5*	5.7	8.6*	5.7	8.1*	9.1
3.0			15.4	16.9*	10.2	12.4*	7.3	10.2*	5.6	8.6	5.3	8.1	9.3
1.5			14.4	19.1*	9.6	13.7*	7.0	11.0*	5.4	8.4	5.1	7.9	9.4
0			13.9	19.7*	9.2	14.4*	6.8	10.8	5.3	8.3	5.2	8.1	9.1
-1.5	14.5*	14.5*	13.8	19.0*	9.1	14.3*	6.7	10.7			5.6	8.8	8.6
-3.0	22.8*	22.8*	14.0	17.3*	9.1	13.2*	6.8	10.2*			6.4	9.6*	7.8
-4.5	18.3*	18.3*	14.1*	14.1*	9.4	10.7*					8.3	9.4*	6.6
-6.0													

## Stick 3.95 m

Under-carriage m	3.0m		4.5m		6.0m		7.5m		9.0m		m				
7.5											6.4*	6.4*	8.3		
6.0											5.4	6.3*	9.1		
4.5							9.8*	9.8*	7.3	8.7*	5.4	7.9	4.8	6.4*	9.6
3.0			14.0*	14.0*	14.8	15.1*	9.6	11.4*	6.9	9.5*	5.2	7.7	4.5	6.7	9.9
1.5			7.0*	7.0*	13.5	17.9*	9.0	13.0*	6.5	9.9	5.0	7.5	4.3	6.5	9.9
0			9.9*	9.9*	12.8	19.3*	8.5	13.5	6.3	9.6	4.8	7.3	4.4	6.6	9.7
-1.5	14.5*	14.5*	12.5	19.2*	8.3	13.2	6.1	9.4	4.8	7.3	4.6	7.0	9.2		
-3.0	20.4*	20.4*	12.6	18.1*	8.2	13.1	6.1	9.4			5.2	8.0	8.4		
-4.5	21.4*	21.4*	12.8	15.7*	8.4	11.9*					6.4	9.3*	7.3		
-6.0			11.2*	11.2*							9.0*	9.0*	5.5		
7.5							7.7*	7.7*			6.4*	6.4*	8.3		
6.0							8.0*	8.0*	5.9	6.7*	5.8	6.3*	9.1		
4.5					9.8*	9.8*	7.7	8.7*	5.8	8.0*	5.1	6.4*	9.6		
3.0			14.0*	14.0*	15.1*	15.1*	10.3	11.4*	7.4	9.5*	5.6	8.4*	4.8	6.8*	9.9
1.5			7.0*	7.0*	14.6	17.9*	9.6	13.0*	7.0	10.4*	5.4	8.4	4.6	7.2	9.9
0			9.9*	9.9*	13.9	19.3*	9.2	13.9*	6.7	10.7	5.2	8.2	4.7	7.4	9.7
-1.5	14.5*	14.5*	13.6	19.2*	8.9	14.2*	6.6	10.5	5.1	8.1	5.0	7.8	9.2		
-3.0	20.4*	20.4*	13.6	18.1*	8.9	13.6*	6.5	10.5			5.6	8.9	8.4		
-4.5	21.4*	21.4*	13.9	15.7*	9.0	11.9*					6.9	9.3*	7.3		
-6.0			11.2*	11.2*							9.0*	9.0*	5.5		

Height Can be slewed through 360° In longitudinal position of undercarriage Max. reach \* Limited by hydr. capacity

The load values are quoted in tons (t) at stick end (without bucket), and may be swung 360° on firm and even ground. Adjacent values are valid for the undercarriage when in the longitudinal position. Capacities are valid for 600 mm wide track pads. Indicated loads are based on ISO 10567 standard and do not exceed 75% of tipping or 87% of hydraulic capacity (indicated via \*). Without bucket cylinder, link and lever the lift capacities will increase by 495 kg. Lifting capacity of the excavator is limited by machine stability and hydraulic capacity.

According to European Standard, EN 474-5: In the European Union excavators have to be equipped with an overload warning device, a load diagram and automatic safety check valves on hoist cylinders and stick cylinder(s), when they are used for lifting operations which require the use of lifting accessories.

Determine maximum load lift from load lift chart displayed in the operator's cab or from load lift chart detailed in the operator's manual supplied with the machine.

# Lift capacities

with mono boom 6.45 m, counterweight 9.4 t and track pads 600 mm

## Stick 2.60 m

Under-carriage	3.0m		4.5m		6.0m		7.5m		9.0m		m
	Height	Can be slewed through 360°	Height	Can be slewed through 360°	Height	Can be slewed through 360°	Height	Can be slewed through 360°	Height	Can be slewed through 360°	
7.5					10.0*	10.0*			9.1	9.9*	6.9
6.0					10.6*	10.6*			7.3	9.6*	7.9
4.5			15.2*	15.2*	10.7	11.8*	7.7	10.2*	6.4	9.3	8.5
3.0			15.0	18.4*	10.1	13.3*	7.4	10.8*	5.9	8.6	8.8
1.5			14.2	16.5*	9.6	14.3*	7.2	10.7	5.8	8.5	8.8
0			14.1	19.6*	9.4	14.5	7.0	10.5	5.9	8.7	8.6
-1.5	15.0*	15.0*	14.1	18.4*	9.3	14.2*	7.0	10.4	6.4	9.5	8.0
-3.0	20.1*	20.1*	14.3	16.2*	9.5	12.6*			7.5	10.1*	7.1
-4.5			12.2*	12.2*					9.4*	9.4*	5.7
-6.0											
7.5					10.0*	10.0*			9.6	9.9*	6.9
6.0					10.6*	10.6*	8.4	9.7*	7.7	9.6*	7.9
4.5			15.2*	15.2*	11.4	11.8*	8.2	10.2*	6.8	9.6*	8.5
3.0			16.1	18.4*	10.8	13.3*	7.9	10.8*	6.3	9.5	8.8
1.5			15.4	16.5*	10.3	14.3*	7.6	11.4*	6.2	9.4	8.8
0			15.2	19.6*	10.1	14.7*	7.5	11.6*	6.3	9.7	8.6
-1.5	15.0*	15.0*	15.2	18.4*	10.0	14.2*	7.4	11.1*	6.8	10.1*	8.0
-3.0	20.1*	20.1*	15.5	16.2*	10.1	12.6*			8.1	10.1*	7.1
-4.5			12.2*	12.2*					9.4*	9.4*	5.7
-6.0											

## Stick 2.90 m

Under-carriage	3.0m		4.5m		6.0m		7.5m		9.0m		m
	Height	Can be slewed through 360°	Height	Can be slewed through 360°	Height	Can be slewed through 360°	Height	Can be slewed through 360°	Height	Can be slewed through 360°	
7.5									8.5	9.3*	7.2
6.0							10.2*	10.2*	8.0	9.3*	
4.5			14.5*	14.5*	10.8	11.4*	7.7	9.9*			6.9
3.0			15.2	17.7*	10.2	12.9*	7.4	10.6*	5.7	8.3	5.7
1.5			14.3	19.6*	9.7	14.1*	7.1	10.6	5.6	8.2	5.5
0			14.0	19.7*	9.4	14.5	7.0	10.4			5.6
-1.5	15.0*	15.0*	14.0	18.7*	9.3	14.3*	6.9	10.4			6.1
-3.0	21.6*	21.6*	14.2	16.7*	9.3	13.0*					7.1
-4.5	16.5*	16.5*	13.1*	13.1*	9.7	9.8*					9.4
-6.0											
7.5											9.0
6.0					10.2*	10.2*	8.5	9.3*			7.4
4.5			14.5*	14.5*	11.4*	11.4*	8.2	9.9*			6.5
3.0			16.3	17.7*	10.9	12.9*	7.9	10.6*	6.1	9.2	6.0
1.5			15.4	19.6*	10.3	14.1*	7.6	11.2*	5.9	9.0	5.9
0			15.1	19.7*	10.0	14.6*	7.4	11.5*			6.0
-1.5	15.0*	15.0*	15.1	18.7*	9.9	14.3*	7.4	11.2*			6.5
-3.0	21.6*	21.6*	15.3	16.7*	10.0	13.0*					7.5
-4.5	16.5*	16.5*	13.1*	13.1*	9.8*	9.8*					9.5*
-6.0											

## Stick 3.25 m

Under-carriage	3.0m		4.5m		6.0m		7.5m		9.0m		m
	Height	Can be slewed through 360°	Height	Can be slewed through 360°	Height	Can be slewed through 360°	Height	Can be slewed through 360°	Height	Can be slewed through 360°	
7.5							8.1	8.8*	7.9	8.1*	7.6
6.0							8.0	8.9*	6.5	8.0*	8.5
4.5			13.6*	13.6*	10.8	10.9*	7.7	9.5*	5.8	8.5	5.7
3.0			15.4	16.9*	10.2	12.4*	7.4	10.2*	5.7	8.3	5.3
1.5			14.3	19.1*	9.6	13.7*	7.1	10.6	5.5	8.1	5.2
0			13.9	19.7*	9.3	14.4*	6.9	10.4	5.4	8.0	5.3
-1.5	14.5*	14.5*	13.8	19.0*	9.1	14.3	6.8	10.3			5.7
-3.0	22.8*	22.8*	14.0	17.3*	9.2	13.2*	6.8	10.2*			6.5
-4.5	18.3*	18.3*	14.1*	14.1*	9.5	10.7*					8.4
-6.0											9.4*
7.5							8.6	8.8*			8.1*
6.0							8.5	8.9*			6.9
4.5			13.6*	13.6*	10.9*	10.9*	8.2	9.5*	6.2	8.6*	6.1
3.0			16.5	16.9*	10.9	12.4*	7.9	10.2*	6.0	9.0*	5.7
1.5			15.5	19.1*	10.3	13.7*	7.6	11.0*	5.9	9.0	5.6
0			15.0	19.7*	10.0	14.4*	7.4	11.4*	5.8	8.9	5.7
-1.5	14.5*	14.5*	14.9	19.0*	9.8	14.3*	7.3	11.2*			6.1
-3.0	22.8*	22.8*	15.1	17.3*	9.9	13.2*	7.3	10.2*			6.9
-4.5	18.3*	18.3*	14.1*	14.1*	10.1	10.7*					9.0
-6.0											9.4*

## Stick 3.95 m

Under-carriage	3.0m		4.5m		6.0m		7.5m		9.0m		m
	Height	Can be slewed through 360°	Height	Can be slewed through 360°	Height	Can be slewed through 360°	Height	Can be slewed through 360°	Height	Can be slewed through 360°	
7.5											6.4*
6.0							7.7*	7.7*			6.4*
4.5							8.0*	8.0*	6.0	6.7*	5.8
3.0			14.0*	14.0*	15.1*	15.1*	10.3	11.4*	7.4	9.5*	5.6
1.5			7.0*	7.0*	14.5	17.9*	9.7	13.0*	7.1	10.4*	5.4
0			9.9*	9.9*	13.8	19.3*	9.2	13.9*	6.8	10.3	5.3
-1.5	14.5*	14.5*	13.6	19.2*	9.0	14.1	6.6	10.1	5.2	7.8	4.8
-3.0	20.4*	20.4*	13.6	18.1*	8.9	13.6*	6.6	10.1			5.0
-4.5	21.4*	21.4*	13.9	15.7*	9.1	11.9*					5.7
-6.0			11.2*	11.2*							7.0
7.5											9.0*
6.0							7.7*	7.7*			9.0*
4.5							8.0*	8.0*	6.3	6.7*	6.2
3.0			14.0*	14.0*	15.1*	15.1*	11.0	11.4*	7.9	9.5*	6.0
1.5			7.0*	7.0*	15.7	17.9*	10.4	13.0*	7.6	10.4*	5.8
0			9.9*	9.9*	15.0	19.3*	9.9	13.9*	7.3	11.0*	5.6
-1.5	14.5*	14.5*	14.7	19.2*	9.7	14.2*	7.1	11.2*	5.6	8.7	5.1
-3.0	20.4*	20.4*	14.7	18.1*	9.6	13.6*	7.1	10.6*			5.4
-4.5	21.4*	21.4*	15.0	15.7*	9.8	11.9*					6.1
-6.0			11.2*	11.2*							7.5

Height Can be slewed through 360° In longitudinal position of undercarriage Max. reach \* Limited by hydr. capacity

The load values are quoted in tons (t) at stick end (without bucket), and may be swung 360° on firm and even ground. Adjacent values are valid for the undercarriage when in the longitudinal position. Capacities are valid for 600 mm wide track pads. Indicated loads are based on ISO 10567 standard and do not exceed 75% of tipping or 87% of hydraulic capacity (indicated via \*). Without bucket cylinder, link and lever the lift capacities will increase by 495 kg. Lifting capacity of the excavator is limited by machine stability and hydraulic capacity.

According to European Standard, EN 474-5: In the European Union excavators have to be equipped with an overload warning device, a load diagram and automatic safety check valves on hoist cylinders and stick cylinder(s), when they are used for lifting operations which require the use of lifting accessories.

Determine maximum load lift from load lift chart displayed in the operator's cab or from load lift chart detailed in the operator's manual supplied with the machine.

# Lift capacities

with mono boom SME 6.15 m, counterweight 8.4 t and track pads 600 mm

## Stick SME 2.15 m

Under-carriage m	3.0m		4.5m		6.0m		7.5m		9.0m		m	
7.5										10.6	11.3*	6.0
6.0										7.9	10.8*	7.1
4.5			15.1	16.0*	9.9	12.4*	7.1	10.5		6.7	10.0	7.7
3.0			13.8	18.9*	9.3	13.7*	6.8	10.2		6.2	9.2	8.0
LC												
1.5			13.2	19.1*	8.9	13.9	6.6	10.0		6.0	9.0	8.1
0			13.0	19.3*	8.7	13.6	6.5	9.8		6.2	9.3	7.8
-1.5	19.0*	19.0*	13.1	17.7*	8.7	13.6				6.8	10.4	7.2
-3.0	17.6*	17.6*	13.4	14.8*	8.9	11.3*				8.5	10.7*	6.2
-4.5												
WLC												
7.5					11.0	11.4*				11.3*	11.3*	6.0
6.0					8.4	10.8*				8.4	10.8*	7.1
4.5			16.0*	16.0*	10.6	12.4*	7.5	10.8*		7.2	10.6*	7.7
3.0			14.9	18.9*	10.0	13.7*	7.3	11.2*		6.6	10.2	8.0
1.5			14.2	19.1*	9.6	14.5*	7.1	11.1		6.4	10.0	8.1
0			14.1	19.3*	9.3	14.6*	7.0	11.0		6.6	10.4	7.8
-1.5	19.0*	19.0*	14.2	17.7*	9.3	13.7*				7.3	11.0*	7.2
-3.0	17.6*	17.6*	14.6	14.8*	9.6	11.3*				9.1	10.7*	6.2
-4.5												

## Stick SME 2.60 m

Under-carriage m	3.0m		4.5m		6.0m		7.5m		9.0m		m	
7.5					10.3*	10.3*				9.2	10.3*	6.5
6.0					10.5	10.7*	7.3	10.0*		7.2	10.0*	7.5
4.5			14.9*	14.9*	10.0	11.8*	7.1	10.3*		6.2	9.2	8.2
3.0			14.1	18.0*	9.4	13.2*	6.8	10.2		5.7	8.5	8.5
LC												
1.5			13.3	19.7*	8.9	13.9	6.6	9.9		5.5	8.3	8.5
0			13.0	19.7*	8.6	13.6	6.4	9.8		5.7	8.5	8.2
-1.5	18.0*	18.0*	13.0	18.4*	8.6	13.5	6.4	9.7		6.2	9.4	7.7
-3.0	20.2*	20.2*	13.2	15.9*	8.7	12.2*				7.5	10.3*	6.8
-4.5			11.1*	11.1*						9.3*	9.3*	5.2
WLC												
7.5					10.3*	10.3*				9.8	10.3*	6.5
6.0					10.7*	10.7*	7.7	10.0*		7.7	10.0*	7.5
4.5			14.9*	14.9*	10.7	11.8*	7.6	10.3*		6.6	9.9*	8.2
3.0			15.2	18.0*	10.1	13.2*	7.3	10.9*		6.1	9.4	8.5
1.5			14.4	19.7*	9.6	14.2*	7.0	11.1		5.9	9.2	8.5
0			14.1	19.7*	9.3	14.6*	6.9	10.9		6.1	9.5	8.2
-1.5	18.0*	18.0*	14.1	18.4*	9.2	14.0*	6.9	10.8*		6.7	10.4*	7.7
-3.0	20.2*	20.2*	14.3	15.9*	9.4	12.2*				8.0	10.3*	6.8
-4.5			11.1*	11.1*						9.3*	9.3*	5.2

Height Can be slewed through 360° In longitudinal position of undercarriage Max. reach \* Limited by hydr. capacity

The load values are quoted in tons (t) at stick end (without bucket), and may be swung 360° on firm and even ground. Adjacent values are valid for the undercarriage when in the longitudinal position. Capacities are valid for 600 mm wide track pads. Indicated loads are based on ISO 10567 standard and do not exceed 75% of tipping or 87% of hydraulic capacity (indicated via \*). Without bucket cylinder, link and lever the lift capacities will increase by 590 kg. Lifting capacity of the excavator is limited by machine stability and hydraulic capacity.

According to European Standard, EN 474-5: In the European Union excavators have to be equipped with an overload warning device, a load diagram and automatic safety check valves on hoist cylinders and stick cylinder(s), when they are used for lifting operations which require the use of lifting accessories.

Determine maximum load lift from load lift chart displayed in the operator's cab or from load lift chart detailed in the operator's manual supplied with the machine.

# Lift capacities

with mono boom SME 6.15 m, counterweight 9.4 t and track pads 600 mm

## Stick SME 2.15 m

Under-carriage m	3.0m		4.5m		6.0m		7.5m		9.0m		m	
7.5										11.3*	11.3*	6.0
6.0										8.5	10.8*	7.1
4.5			16.0*	16.0*	10.6	12.4*	7.6	10.8*		7.2	10.6	7.7
3.0			14.9	18.9*	10.0	13.7*	7.4	10.9		6.6	9.8	8.0
LC 1.5			14.2	19.1*	9.6	14.5*	7.1	10.6		6.5	9.6	8.1
0			14.1	19.3*	9.4	14.5	7.0	10.5		6.7	9.9	7.8
-1.5	19.0*	19.0*	14.2	17.7*	9.4	13.7*				7.4	11.0*	7.2
-3.0	17.6*	17.6*	14.5	14.8*	9.6	11.3*				9.2	10.7*	6.2
-4.5												
7.5					11.4*	11.4*				11.3*	11.3*	6.0
6.0										9.0	10.8*	7.1
4.5			16.0*	16.0*	11.3	12.4*	8.1	10.8*		7.7	10.6*	7.7
3.0			16.0	18.9*	10.7	13.7*	7.8	11.2*		7.1	10.7*	8.0
LC 1.5			15.4	19.1*	10.3	14.5*	7.6	11.6*		6.9	10.6	8.1
0			15.2	19.3*	10.1	14.6*	7.5	11.5*		7.1	10.9*	7.8
-1.5	19.0*	19.0*	15.3	17.7*	10.1	13.7*				7.9	11.0*	7.2
-3.0	17.6*	17.6*	14.8*	14.8*	10.3	11.3*				9.8	10.7*	6.2
-4.5												

## Stick SME 2.60 m

Under-carriage m	3.0m		4.5m		6.0m		7.5m		9.0m		m	
7.5										9.9	10.3*	6.5
6.0										7.7	10.0*	7.5
4.5			14.9*	14.9*	10.7	11.8*	7.6	10.3*		6.7	9.8	8.2
3.0			15.2	18.0*	10.1	13.2*	7.4	10.9*		6.2	9.1	8.5
LC 1.5			14.3	19.7*	9.6	14.2*	7.1	10.6		6.0	8.9	8.5
0			14.0	19.7*	9.4	14.5	6.9	10.4		6.1	9.1	8.2
-1.5	18.0*	18.0*	14.1	18.4*	9.3	14.0*	6.9	10.4		6.7	10.1	7.7
-3.0	20.2*	20.2*	14.3	15.9*	9.4	12.2*				8.1	10.3*	6.8
-4.5			11.1*	11.1*						9.3*	9.3*	5.2
7.5					10.3*	10.3*				10.3*	10.3*	6.5
6.0					10.7*	10.7*	8.3	10.0*		8.2	10.0*	7.5
4.5			14.9*	14.9*	11.4	11.8*	8.1	10.3*		7.1	9.9*	8.2
3.0			16.3	18.0*	10.8	13.2*	7.8	10.9*		6.6	10.0*	8.5
LC 1.5			15.5	19.7*	10.3	14.2*	7.6	11.4*		6.4	9.8	8.5
0			15.2	19.7*	10.0	14.6*	7.4	11.5*		6.6	10.1	8.2
-1.5	18.0*	18.0*	15.2	18.4*	10.0	14.0*	7.4	10.8*		7.2	10.4*	7.7
-3.0	20.2*	20.2*	15.4	15.9*	10.1	12.2*				8.7	10.3*	6.8
-4.5			11.1*	11.1*						9.3*	9.3*	5.2

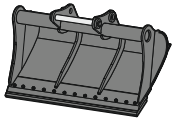
Height Can be slewed through 360° In longitudinal position of undercarriage Max. reach \* Limited by hydr. capacity

The load values are quoted in tons (t) at stick end (without bucket), and may be swung 360° on firm and even ground. Adjacent values are valid for the undercarriage when in the longitudinal position. Capacities are valid for 600 mm wide track pads. Indicated loads are based on ISO 10567 standard and do not exceed 75% of tipping or 87% of hydraulic capacity (indicated via \*). Without bucket cylinder, link and lever the lift capacities will increase by 590 kg. Lifting capacity of the excavator is limited by machine stability and hydraulic capacity.

According to European Standard, EN 474-5: In the European Union excavators have to be equipped with an overload warning device, a load diagram and automatic safety check valves on hoist cylinders and stick cylinder(s), when they are used for lifting operations which require the use of lifting accessories.

Determine maximum load lift from load lift chart displayed in the operator's cab or from load lift chart detailed in the operator's manual supplied with the machine.

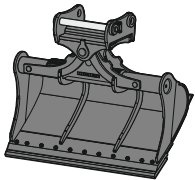
# Attachments



## Rigid ditch cleaning bucket

### GRL 05, for mounting to quick coupler SWA 66

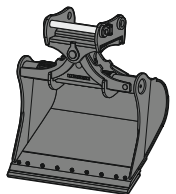
Cutting width	mm	2,000	2,200	2,400	2,800	2,800
Capacity	m <sup>3</sup>	1.45	1.65	1.50	2.60	2.90
Weight	kg	994	1,048	930	1,522	1,561



## Tiltable ditch cleaning bucket

### GRL 100, 2 x 50° tiltable, for mounting to quick coupler SWA 66

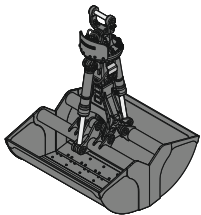
Cutting width	mm	2,000	2,000	2,000	2,200	2,400	2,400
Capacity	m <sup>3</sup>	0.70	1.20	1.45	1.65	0.85	1.45
Weight	kg	1,375	1,520	1,595	1,660	1,475	1,610



## Tilt bucket

### SL 100, 2 x 50° tiltable, for mounting to quick coupler SWA 66

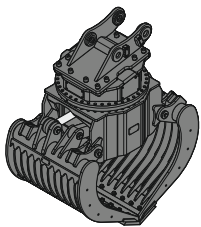
Cutting width	mm	1,600	1,600	1,700	1,800	1,800	1,800	1,800
Capacity	m <sup>3</sup>	1.45	1.75	1.85	1.60	2.00	1.60	2.00
Weight	kg	1,520	1,635	1,695	1,620	1,690	1,749	1,757
HD version							X	X



## Clamshell grab

### GMZ 80, clamshell buckets, for mounting to quick coupler SWA 66

Cutting width	mm	1,200	1,400	1,650	2,000
Capacity	m <sup>3</sup>	1.40	1.70	2.00	2.50
Weight	kg	1,452	1,558	1,693	1,877



## Sorting grab

ribbed

perforated

### SG 40, for mounting to quick coupler SWA 66

Cutting width	mm	1,100	1,300	1,100	1,300
Capacity	m <sup>3</sup>	1.10	1.40	1.30	1.60
Weight	kg	2,320	2,895	2,230	2,800



# Serial equipment

## Undercarriage

Lashing eyes  
Sprocket with dirt ejector  
Track and carrier rollers, sealed and lifetime-lubricated

## Uppercarriage

Access platforms without protruding parts  
Anti-skid surfaces  
Automatic swing brake lock  
Engine hood with gas spring opening  
Filters accessible from ground level  
Handrails  
Hydraulic oil level, visible from ground level  
Lockable service doors  
Lockable storage and accessories compartment  
Main switch, accessible from ground level  
Main switch, electric, with timer  
Main switch, manual, lockable  
Positioning swing brake manual  
Protection grid on radiator fan  
Sound insulation  
Swing-out radiators  
Windshield washer fluid tank, accessible from ground level

## Hydraulic system

Dedicated swing circuit  
Filter with integrated fine filters  
Hydraulic pressure measuring ports  
Liebherr Positive Control system with 2 independent circuits  
Magnetic rod  
Pressure accumulator for controlled lowering of equipment with engine turned off

## Engine

Air filter with automatic dust ejector  
Automatic engine idling / speed increase, controlled via joystick sensors  
Common-Rail injection system  
Engine oil dipstick  
Exhaust gas after-treatment system – EGR  
Fixed geometry turbocharger  
Fuel fine filter  
Fuel pre-filter and water separator  
Fuel priming pump  
Intercooler  
Power Pack equivalent to EU Stage IIIA / EPA Tier 3

## Cab

2" seat belt with retractor  
9" multifunction colour touchscreen  
Air conditioning, automatic, tri-zone, controlled via display  
Armrests adjustable in length, height and inclination  
Bottle holder  
Cab air filters housing, accessible from ground level  
Cab door sliding windows  
Cigarette lighter  
Coat hook  
Electric socket in cabin (24V)  
Emergency hammer  
Engine coolant level, visible from the cab  
Engine oil level on touchscreen  
Footrest  
Fuel consumption on touchscreen  
Fuel level on touchscreen  
Hydraulic oil level on touchscreen  
Interior lighting  
Laminated right hand side window  
Laminated roof window  
LiDAT Plus (Liebherr data transfer system)  
Mechanical hour meter, visible from ground level  
Mobile phone storage net  
Movement priority between swing and boom, adjustable via touchscreen  
Movement priority for stick-in, adjustable via touchscreen  
Operating modes  
Power modes  
Rain hood over front window opening  
Rearview mirror  
Rear window emergency exit  
Retractable laminated two-piece windscreen  
Roll-down sun blinds for windscreen and roof window  
Rubber floor mat, fixed on floor and removable  
Shortcut buttons on joystick configurable  
Stepless adjustable engine speed  
Storage nets  
Storage spaces  
Swing braking torque adjustable via touchscreen  
Swing drive gearbox oil level, visible from the cab  
Tilttable console left  
Tinted windows  
Visco-elastic damping  
Windscreen wiper and washer

## Equipment

Anti-drift system boom cylinders  
Anti-drift system stick cylinder  
Boom cylinders regeneration  
Pivot points made of cast steel  
SAE split flanges on high pressure lines  
Stick cylinder regeneration

# Equipment standard / option

## Undercarriage

Chain guide 1 piece	+
Chain guide 2 pieces	+
Chain guide 3 pieces	●
Chain guide 4 pieces	+
Chain guide full length	+
Cover and base plate for undercarriage centre section	●
Reinforced cover and base plate for undercarriage centre section	+
Steps	●
Steps wide	+
Track pads triple grouser 600 mm	●
Track pads triple grouser 700 / 800 / 900 mm	+
Track pads triple grouser reinforced 600 mm	+
Tracks, sealed and greased	●
Tracks, sealed and greased, reinforced	+
Undercarriage LC	+
Undercarriage WLC	+

## Uppercarriage

Batteries high capacity	+
Batteries standard capacity	●
Centralised lubrication system (automatic)	+
Centralised lubrication system (manual)	●
Cold kit -30°C	+
Cold kit -40°C	+
Counterweight heavy 9.4 t	+
Counterweight standard 8.4 t	●
External starting aid (24V)	+
Front right rearview mirror	● <sup>1)</sup>
Fuel anti-theft protection	+
Headlight on uppercarriage, front right, LED, 1 piece, protection included	● <sup>1)</sup>
Headlight on uppercarriage, front right, LED+, 1 piece, protection included	+ <sup>1)</sup>
Headlight on uppercarriage, lateral right, LED+, 1 piece	+ <sup>1)</sup>
Headlight on uppercarriage, lateral left, LED+, 1 piece	+ <sup>1)</sup>
Headlights on uppercarriage, rear, LED+, 2 pieces	+ <sup>1)</sup>
Lockable fuel tank cap	●
Lockable fuel tank cap with padlock	+
Lockable storage box	+
Rearview mirror on counterweight	●
Safe uppercarriage side access platform	+
Tank refilling pump fuel	+
Tool set including storage case	●
Uppercarriage bottom closure sheets	●

## Hydraulic system

Filter for hydraulic hammer return flow	+
High pressure circuit flow summation	+
High pressure circuit with Tool Control (20 attachment adjustments on display)	+
Liebherr hydraulic oil	●
Liebherr hydraulic oil, adapted for extreme climate conditions	+
Medium pressure circuit	+

## Engine

Air pre-filter with cyclonical dust trap	+
Air pre-filter with oil bath dust trap	+
Pre-heating system for fuel	+

## Cab

Acoustic travel alarm deactivatable	+
Auxiliary heater programmable	+
Cold kit -30°C	+
Cold kit -40°C	+
Dark tinted windows	+
Electric socket in cabin (12V)	+
Emergency stop in cab	+
FGPS front guard	+
FGPS front guard tiltable	+
FOPS top guard	+
Handrests elevated for joysticks	+
Headlights on cab, front, LED, 2 pieces	● <sup>1)</sup>
Headlights on cab, front, LED+, 2 pieces	+ <sup>1)</sup>
Luminosity control (LED+ headlights)	+
Operator seat Comfort	+
Operator seat Standard	●
Overload warning system	+
Radio Comfort	+
Radio pre-installation	●
Rear view monitoring camera	+
Right hand side view monitoring camera	+
Roof window protection grid	+
ROPS safety cab structure (ISO 12117-2)	+
Rotating beacon on cabin, LED, 1 piece	+
Sun visor	+
Windscreen bottom protection grid	+

## Equipment

Boom bottom protection	+
Bucket cylinder rod protection	+
Floating boom	+
Headlight on boom, right, LED, 1 piece	● <sup>1)</sup>
Headlight on boom, right, LED+, 1 piece	+ <sup>1)</sup>
Liebherr bucket range	+
Liebherr tooth system	+
Mono boom 6.45 m	+
Mono boom SME 6.15 m	+
Pipe fracture safety valve for stick cylinder	+
Pipe fracture safety valves for boom cylinders	+
Quick coupler SWA 66 hydraulic	+
Quick coupler SWA 66 mechanical	+
Stick 2.60 m	+
Stick 2.90 m	+
Stick 3.25 m	+
Stick 3.95 m	+
Stick bottom protection	+
Stick SME 2.15 m	+
Stick SME 2.60 m	+

● = Standard, + = Option

<sup>1)</sup> Equipment not individually available, but only as predefined packages

Non-exhaustive list, please contact us for further information.

Options and /or special equipment, supplied by vendors other than Liebherr, are only to be installed with the knowledge and approval of Liebherr in order to retain warranty.



# The Liebherr Group



## Global and independent: more than 70 years of success

Liebherr was founded in 1949 when, with the development of the world's first mobile tower crane, Hans Liebherr laid the foundations for a family-run company which now has more than 50,000 employees and comprises over 150 companies across every continent. The holding company of the Group is Liebherr-International AG in Bulle, Switzerland, whose shareholders are exclusively members of the Liebherr family.

## Technology leadership and pioneering spirit

Liebherr is a pioneer and its forward-looking approach has seen it make important contributions to technology history over a wide variety of industries. Employees throughout the world continue to share the courage of the company founder, sharing a passion to produce innovative products and a determination to provide world-leading equipment and machinery.

## Diversified product programme

Liebherr is one of the world's biggest construction machine manufacturers and provides high-quality, user-oriented products and services. Its product programme includes earthmoving machinery, material handling technology, deep foundation machines, mining, mobile and crawler cranes, tower cranes, concrete technology, maritime cranes, aerospace and transportation systems, gear technology and automation systems, refrigerators and freezers, components and hotels.

## Customised solutions and maximum customer value

Liebherr solutions are characterised by precision, implementation and longevity. The company is committed to technological excellence and to providing customers with solutions that match their needs exactly. For Liebherr, customer focus does not end with delivery of a product but continues through a comprehensive range of back-up and support services.

[www.liebherr.com](http://www.liebherr.com)

## Liebherr-France SAS

2 avenue Joseph Rey, B.P. 90287 • 68005 Colmar Cedex, France • Phone +33 389 213030  
info.lfr@liebherr.com • [www.liebherr.com](http://www.liebherr.com) • [www.facebook.com/LiebherrConstruction](https://www.facebook.com/LiebherrConstruction)