
Buckets

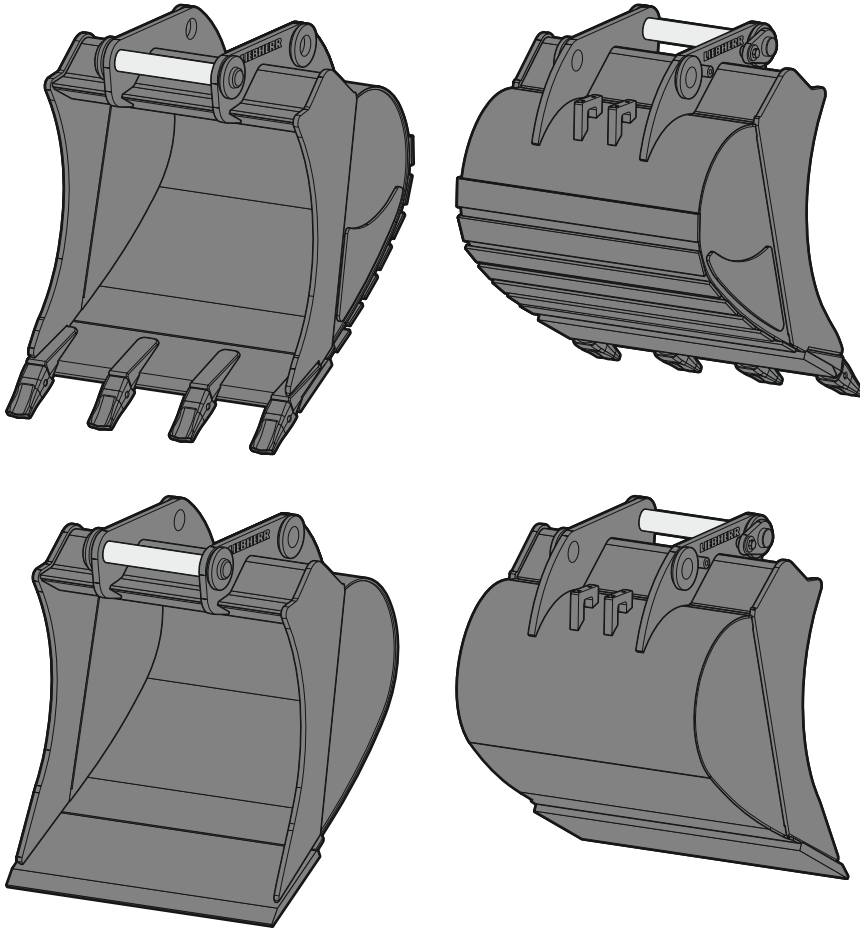
Backhoe buckets	0.15 – 6.80 m ³
2in1 buckets	0.15 – 2.00 m ³
Universal buckets	0.40 – 1.00 m ³
Ditch cleaning buckets	0.17 – 2.90 m ³
Tilt buckets	0.40 – 2.00 m ³

LIEBHERR

Attachments



Backhoe bucket 01



Machine range

Liebherr machines

Wheeled excavator - Compact

A 910 Compact - A 912 Compact

Other machine makes

Weight class

(see operating manual for exact specification)

approx. 10 - 12 t

Dimensions¹⁾ / weights¹⁾

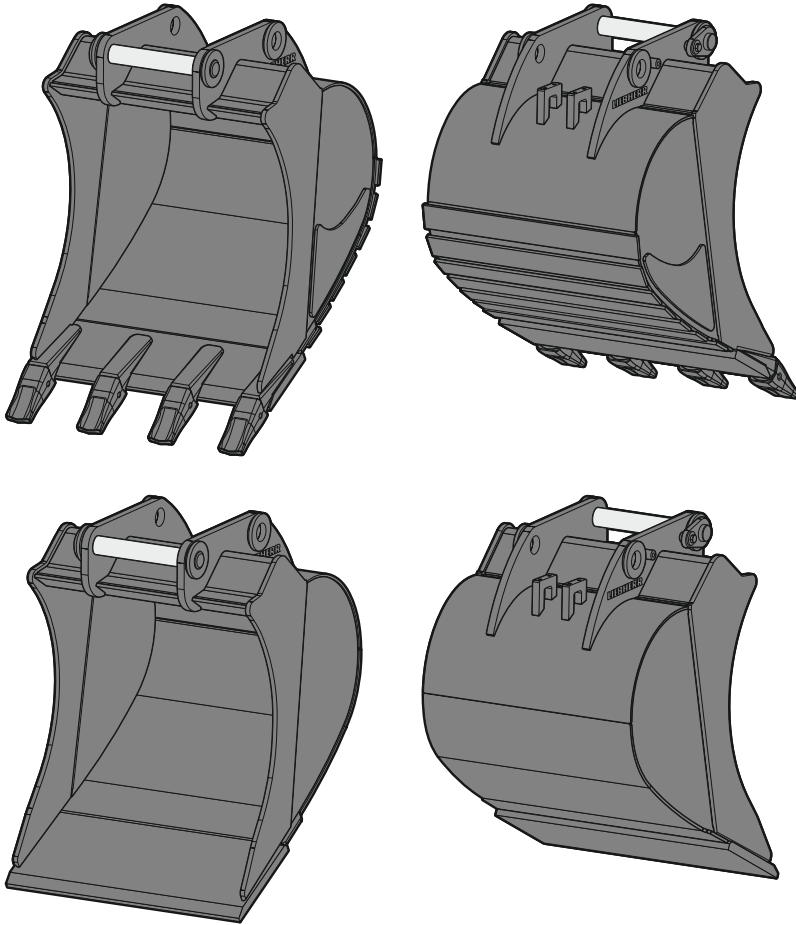
Cutting width	mm	300 ²⁾	400 ²⁾	450	550	650	750	850	950
Capacity	m ³	0.15 ³⁾	0.20 ³⁾	0.17	0.22	0.27	0.33	0.38	0.44
Weight	kg	160	185	165	195	210	230	245	260
Teeth		2	3	3	3	4	4	4	4

¹⁾ based on standard backhoe bucket with SWA 33 quick coupler mounting and UNI-25-2C teeth

²⁾ limited digging depth due to mounting for SWA 33 quick coupler

³⁾ reduced capacity with direct mounting

Backhoe bucket 02



Machine range

Liebherr machines	
Wheeled excavator – Compact	A 913 Compact – A 916 Compact
Wheeled excavator	A 914
Crawler excavator – Compact	R 914 Compact
Railroad excavator	R 914 Rail

Other machine makes	
Weight class (see operating manual for exact specification)	approx. 13 – 15 t

Dimensions¹⁾ / weights¹⁾

Cutting width	mm	300 ²⁾³⁾	400 ²⁾³⁾	500 ³⁾	550	650	850	1,050	1,250
Capacity	m ³	0.17 ⁴⁾	0.24 ⁴⁾	0.32 ⁴⁾	0.29	0.36	0.50	0.65	0.80
Weight	kg	225	245	250	260	285	335	380	430
Teeth		2	2	3	3	3	4	4	5

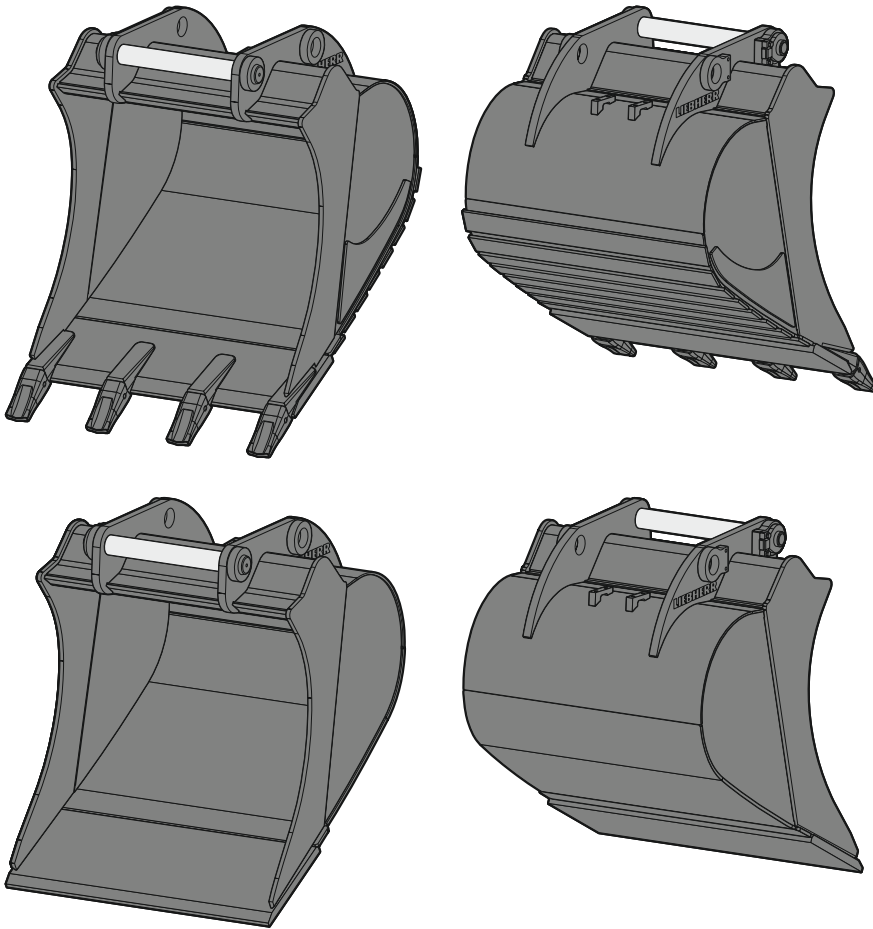
¹⁾ based on standard backhoe bucket with SWA 33 quick coupler mounting and UNI-35-3C teeth

²⁾ limited digging depth due to mounting for SWA 33 quick coupler

³⁾ limited digging depth due to mounting for SWA 48 quick coupler

⁴⁾ reduced capacity with direct mounting

Backhoe bucket 03



Machine range

Liebherr machines

Wheeled excavator – Compact	A 918 Compact
Wheeled excavator	A 916 – A 918
Crawler excavator – Compact	R 920 Compact
Railroad excavator	A 922 Rail – A 924 Rail

Other machine makes

Weight class (see operating manual for exact specification)	approx. 16 – 19 t
--	-------------------

Dimensions¹⁾ / weights¹⁾

Cutting width	mm	300 ²⁾³⁾	400 ²⁾³⁾	500 ³⁾	650	750	850	1,050	1,250
Capacity	m ³	0.17 ⁴⁾	0.24 ⁴⁾	0.32	0.42	0.50	0.60	0.80	0.95
Weight	kg	270	290	295	375	395	435	510	555
Teeth		2	2	3	3	3	4	4	5

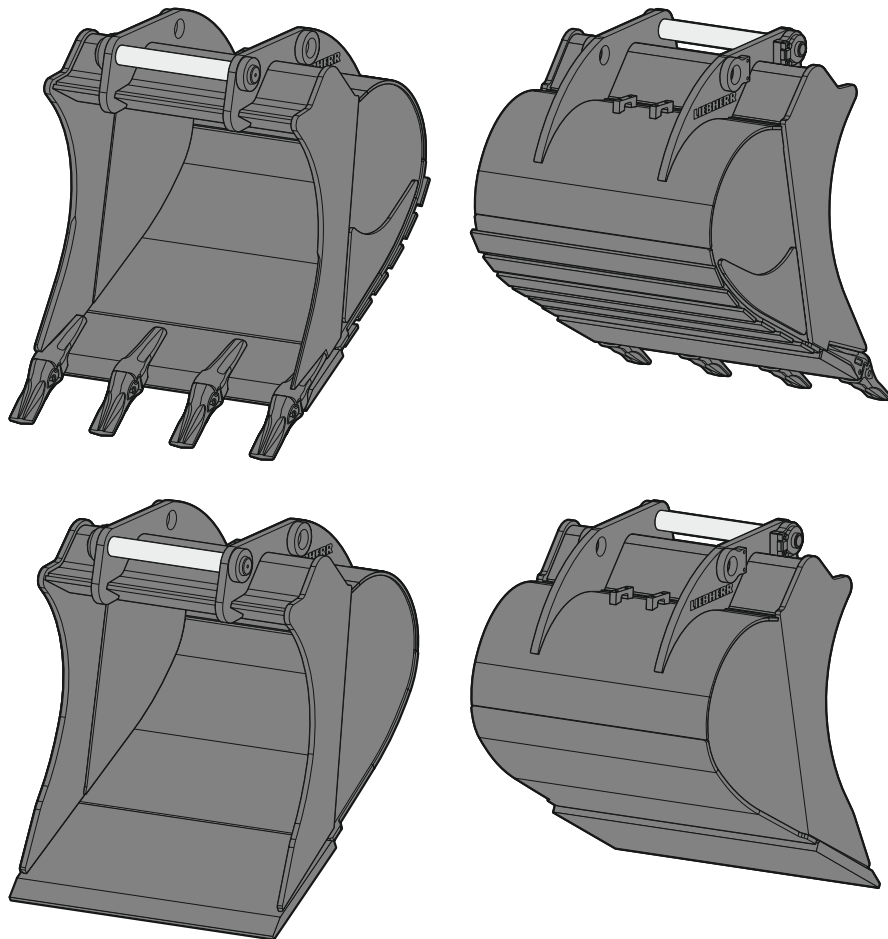
¹⁾ based on standard backhoe bucket with SWA 48 quick coupler mounting and UNI-35-3C teeth

²⁾ limited digging depth due to mounting for SWA 33 quick coupler

³⁾ limited digging depth due to mounting for SWA 48 quick coupler

⁴⁾ reduced capacity with direct mounting

Backhoe bucket 04-01



Machine range

Liebherr machines

Wheeled excavator	A 920
Crawler excavator – Compact	R 926 Compact
Crawler excavator	R 918

Other machine makes

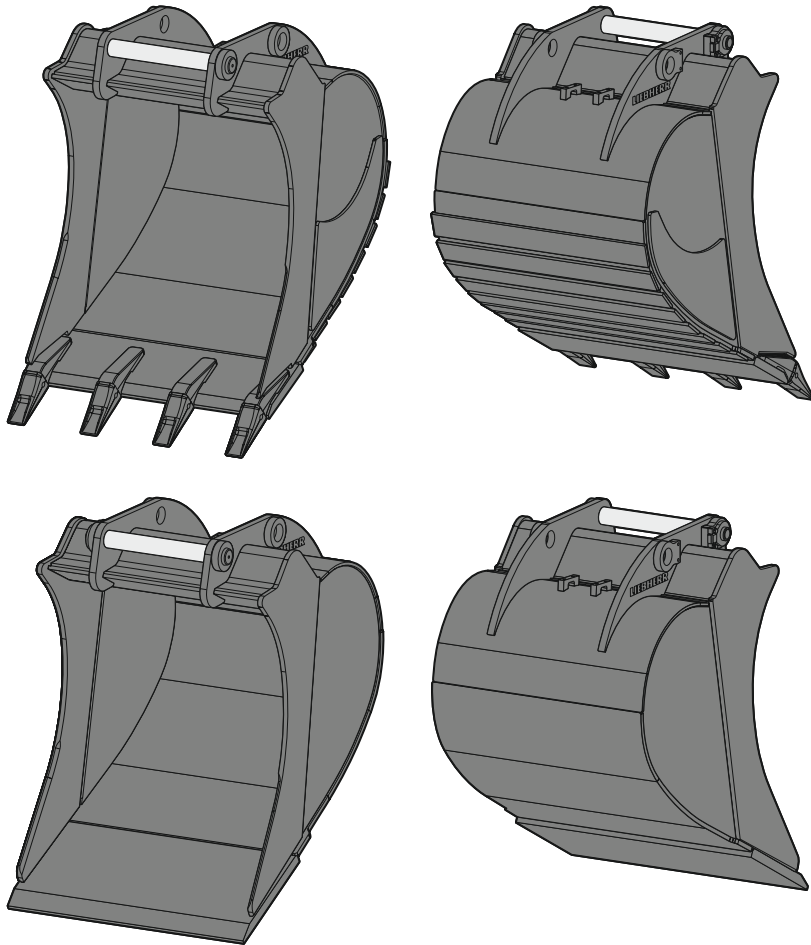
Weight class	approx. 18 – 21 t
(see operating manual for exact specification)	

Dimensions¹⁾ / weights¹⁾

Cutting width	mm	650	850	1,050	1,250	1,400
Capacity	m ³	0.55	0.60	0.80	1.00	1.15
Weight	kg	520	560	640	740	795
Teeth		3	3	4	5	5

¹⁾ based on standard backhoe bucket with SWA 48 quick coupler mounting and Z 35 C teeth

Backhoe bucket 04-02



Machine range

Liebherr machines

Wheeled excavator	A 924 – A 924 Heavy Lift
Crawler excavator – Compact	R 936 Compact
Crawler excavator	R 922 – R 930

Other machine makes

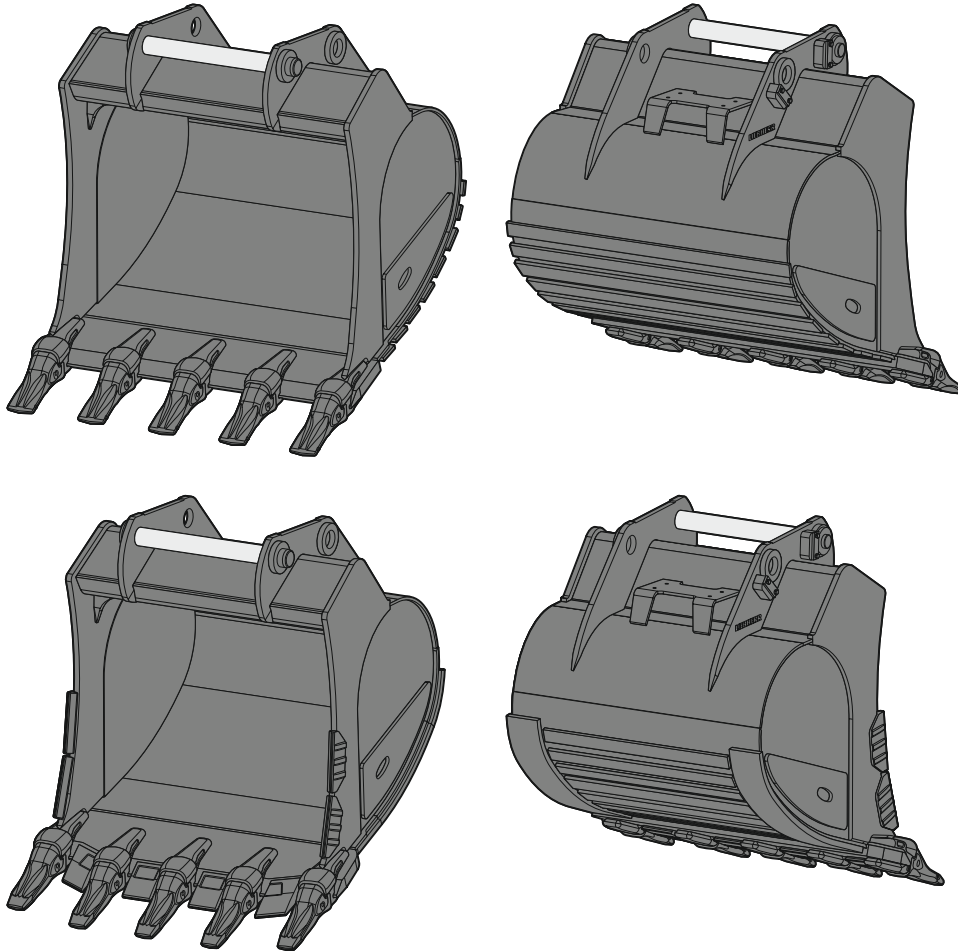
Weight class	approx. 19 – 28 t
(see operating manual for exact specification)	

Dimensions¹⁾ / weights¹⁾

Cutting width	mm	650	850	1,050	1,250	1,400	1,500	1,600	1,700	1,800
Capacity	m ³	0.55	0.75	0.95	1.15	1.35	1.45	1.55	1.85	2.00
Weight	kg	545	630	720	815	875	890	945	1,090	1,133
Teeth		3	3	4	5	5	5	5	6	6

¹⁾ based on standard backhoe bucket with SWA 48 quick coupler mounting and Z 40 C teeth

Backhoe bucket 05



Machine range

Liebherr machines

Crawler excavator – Compact	R 936 Compact
Crawler excavator	R 930

Other machine makes

Weight class	approx. 28 – 35 t
(see operating manual for exact specification)	

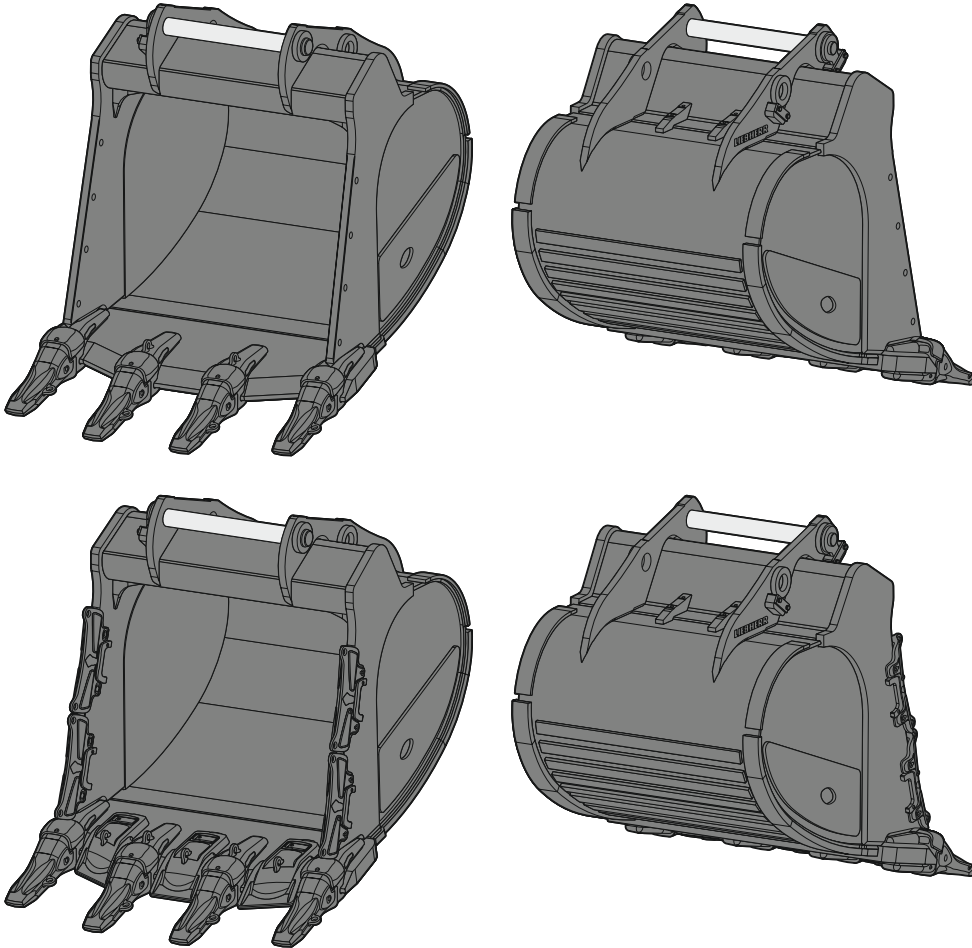
Dimensions¹⁾ / weights¹⁾

Cutting width	mm	800 ²⁾	1,050	1,250	1,400	1,550	1,650	1,650
Capacity	m ³	0.70	1.00	1.25	1.45	1.60	1.75	2.15
Weight	kg	810	870	990	1,050	1,130	1,180	1,270
Teeth		3	4	5	5	5	5	5

¹⁾ based on standard backhoe bucket with SWA 66 quick coupler mounting and Z 50 C teeth

²⁾ for SWA 66 quick coupler mounting only

Backhoe bucket 06



Machine range

Liebherr machines
Crawler excavator

| R 934 - R 945

Other machine makes

Weight class
(see operating manual for exact specification)

| approx. 35 - 45 t

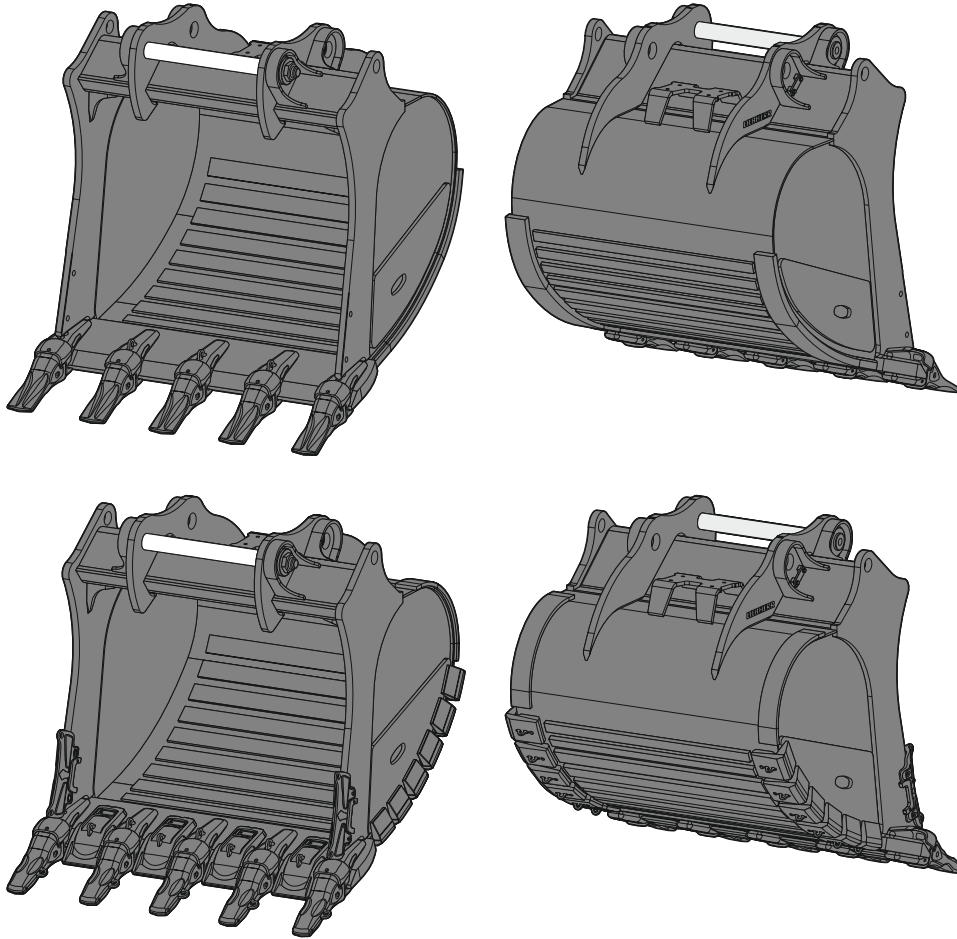
Dimensions¹⁾ / weights¹⁾

Cutting width	mm	1,050 ²⁾	1,200	1,350	1,500	1,600	1,600	1,650	1,800	1,800	1,850
Capacity	m ³	1.00	1.25	1.50	1.75	2.00	2.15	2.00	2.50	2.75	3.00
Weight	kg	1,125	1,270	1,355	1,440	1,640	1,700	1,600	1,830	1,880	1,940
Teeth		4	4	4	4	5	5	5	5	5	6

¹⁾ based on standard backhoe bucket with SWA 66 quick coupler mounting and Z 50 C teeth

²⁾ for SWA 66 quick coupler mounting only

Backhoe bucket 07



Machine range

Liebherr machines
Crawler excavator

R 956 - R 960

Other machine makes

Weight class
(see operating manual for exact specification)

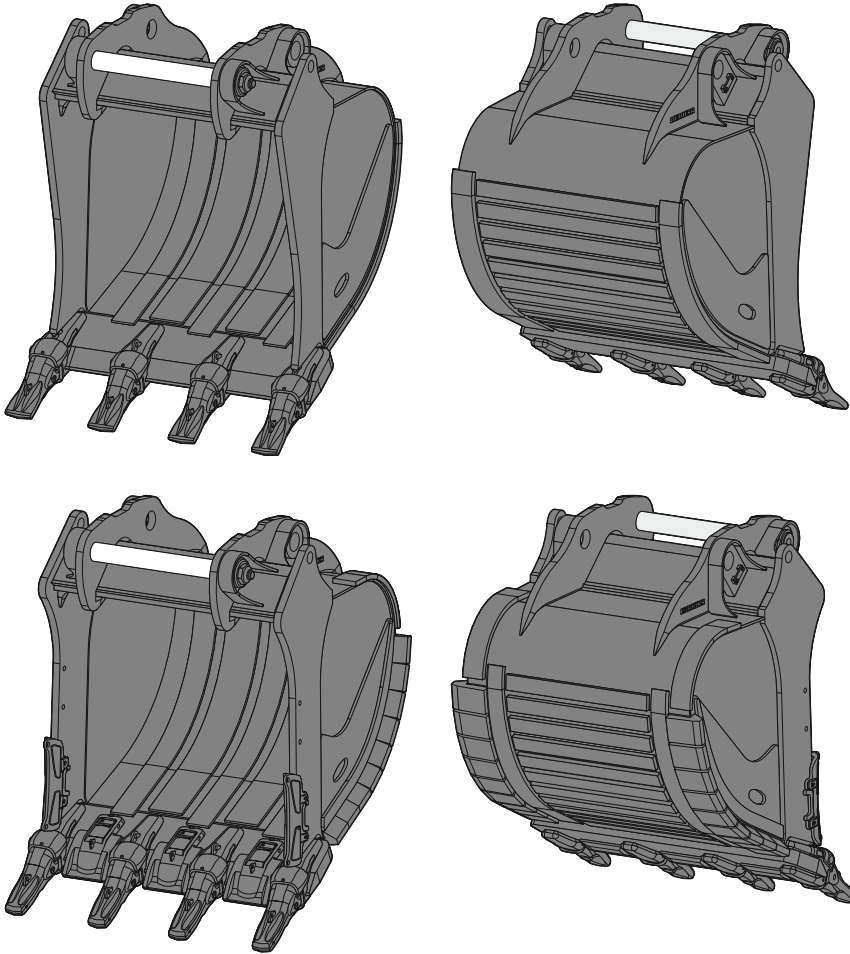
approx. 50 - 60 t

Dimensions¹⁾ / weights¹⁾

Cutting width	mm	1,350	1,550	1,750	1,950	1,950	2,100
Capacity	m ³	1.65	2.00	2.35	2.70	3.00	3.30
Weight	kg	2,200	2,360	2,510	2,770	2,840	2,940
Teeth		3	4	4	5	5	5

¹⁾ based on standard backhoe bucket with SWA 77 quick coupler mounting and Z 70 C teeth

Backhoe bucket 08



Machine range

Liebherr machines
Crawler excavator

| R 966 - R 970

Other machine makes

Weight class
(see operating manual for exact specification)

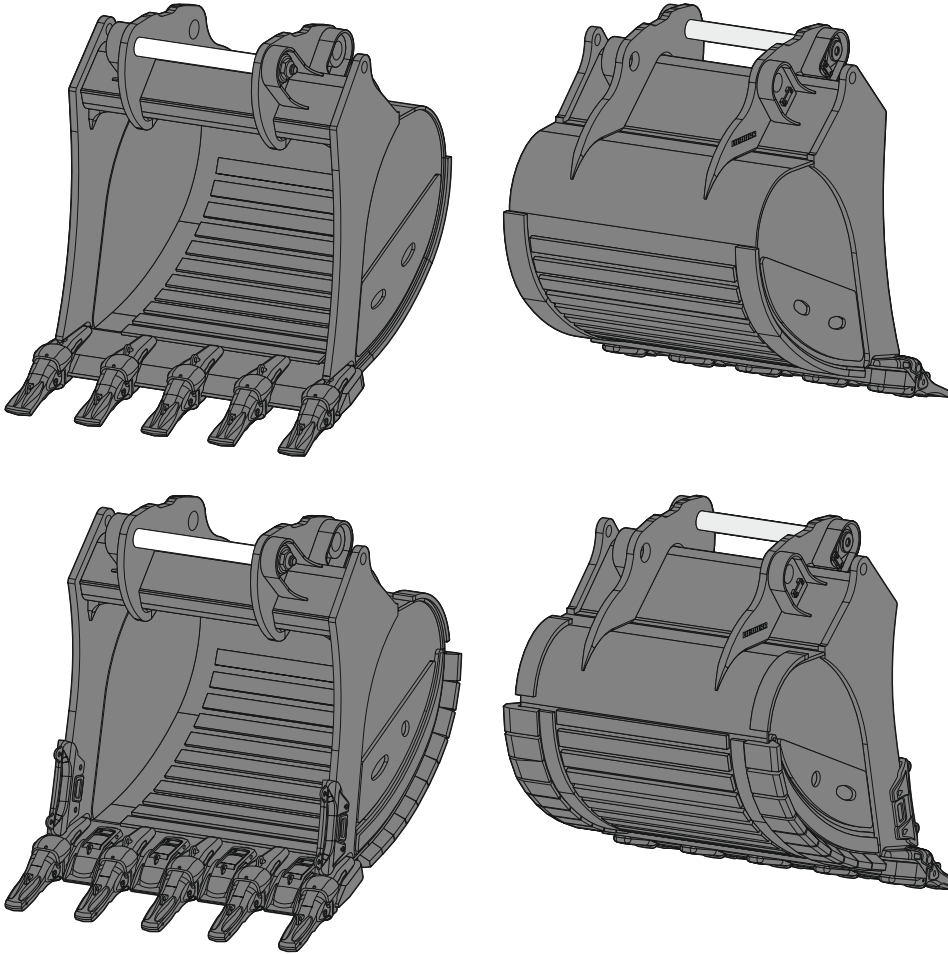
| approx. 60 - 80 t

Dimensions¹⁾ / weights¹⁾

Cutting width	mm	1,400	1,700	1,950	2,150	1,950	2,150	2,250	2,450
Capacity	m ³	2.00	2.50	3.00	3.50	4.00	4.50	5.00	5.50
Weight	kg	2,465	2,820	3,100	3,320	3,560	3,780	3,935	4,190
Teeth		3	4	5	5	5	5	5	6

¹⁾ based on standard backhoe bucket with direct mounting, straight cutting edge and Z 70 C teeth

Backhoe bucket 09



Machine range

Liebherr machines
Crawler excavator

R 976 - R 980

Other machine makes

Weight class
(see operating manual for exact specification)

approx. 80 - 100 t

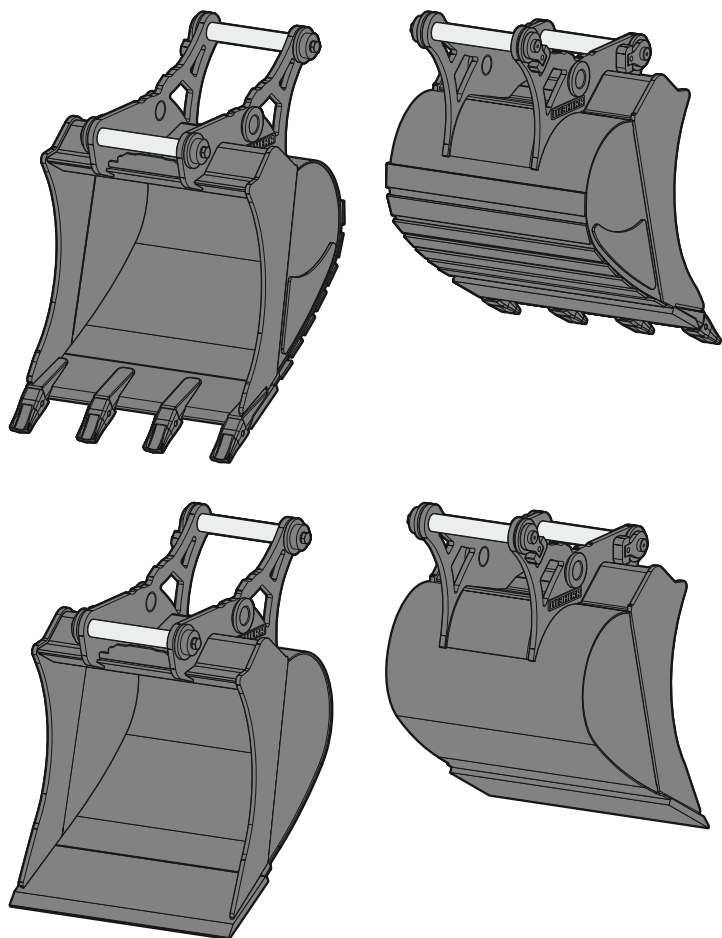
Dimensions¹⁾ / weights¹⁾

Cutting width	mm	1,450	1,800	2,000	2,200	2,200	2,300	2,300	2,350 ²⁾	2,500 ²⁾
Capacity	m ³	2.60	3.60	4.10	4.50	5.20	5.60	6.20	6.20	6.80
Weight	kg	3,750	4,350	4,700	5,100	5,300	5,550	5,800	6,320	6,600
Teeth		3	4	4	5	5	5	5	5	5

¹⁾ based on standard backhoe bucket with direct mounting, straight cutting edge, HD and Z 90 C teeth

²⁾ based on standard backhoe bucket with direct mounting, straight cutting edge, HD and Z 100 C teeth

2in1 bucket 01



Machine range

Liebherr machines

Wheeled excavator - Compact

A 910 Compact - A 912 Compact

Other machine makes

Weight class

(see operating manual for exact specification)

approx. 10 - 12 t

Dimensions¹⁾ / weights¹⁾

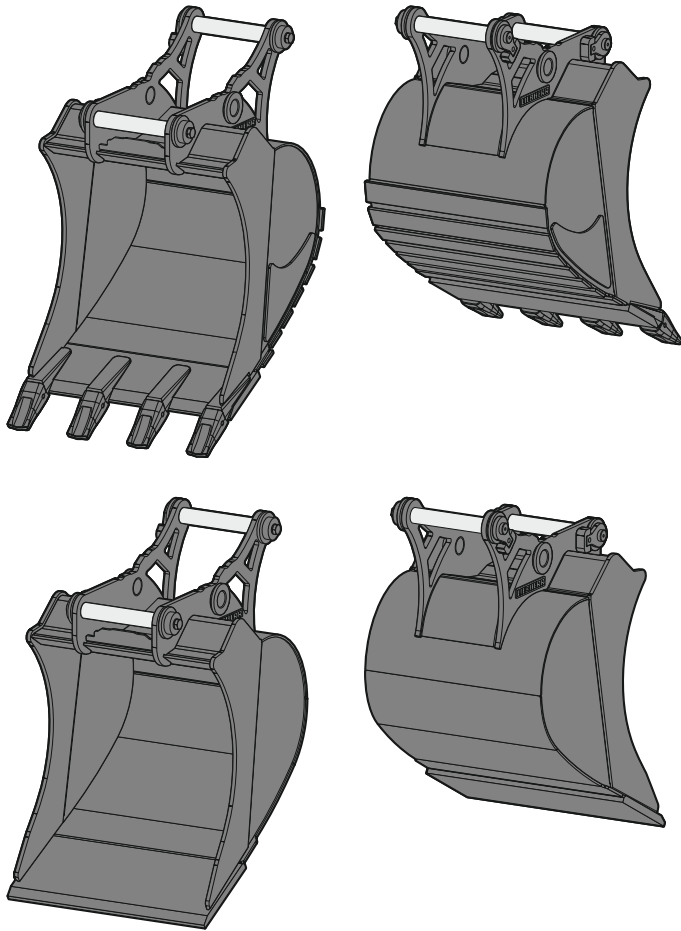
Cutting width	mm	300 ²⁾	400 ²⁾	450	550	650	850	950
Capacity	m ³	0.15 ³⁾	0.20 ³⁾	0.17	0.22	0.27	0.38	0.44
Weight	kg	221	234	210	237	252	288	303
Teeth		2	3	3	3	4	4	4

¹⁾ based on standard 2in1 bucket with SWA 33 quick coupler mounting and UNI-25-2C teeth

²⁾ limited digging depth due to mounting for SWA 33 quick coupler

³⁾ reduced capacity with direct mounting

2in1 bucket 02



Machine range

Liebherr machines

Wheeled excavator - Compact	A 913 Compact - A 916 Compact
Wheeled excavator	A 914
Crawler excavator - Compact	R 914 Compact
Railroad excavator	R 914 Rail

Other machine makes

Weight class (see operating manual for exact specification)	approx. 13 - 15 t
--	-------------------

Dimensions¹⁾ / weights¹⁾

Cutting width	mm	300 ²⁾	400 ²⁾	500 ³⁾	650	850	1,050	1,250
Capacity	m ³	0.17 ⁴⁾	0.24 ⁴⁾	0.32 ⁴⁾	0.36	0.50	0.65	0.80
Weight	kg	284	291	287	321	371	416	465
Teeth		2	2	3	3	4	4	5

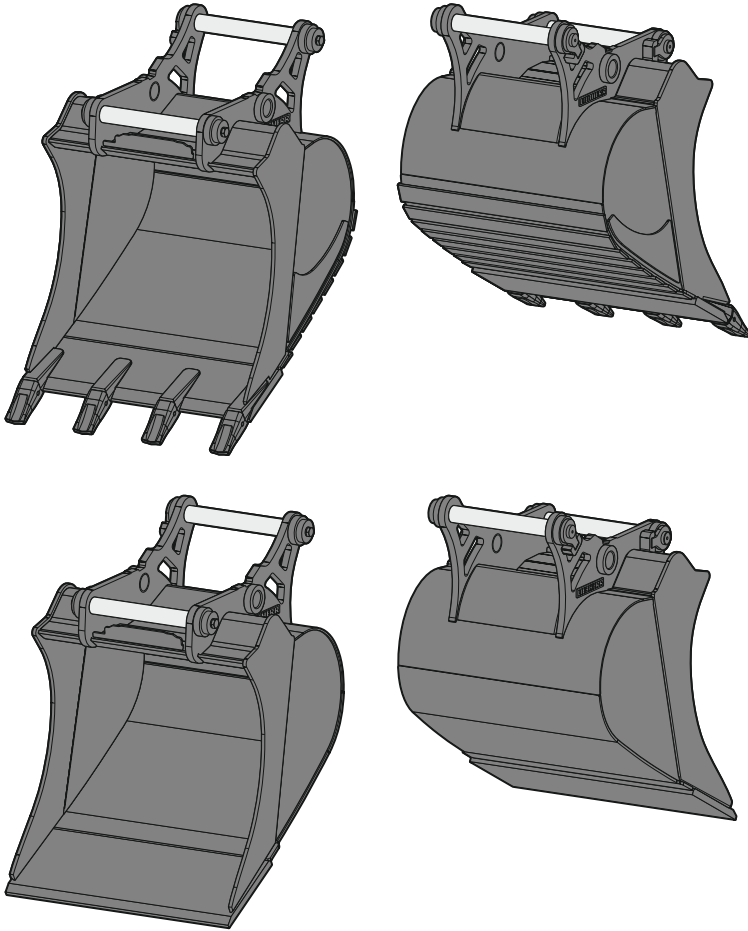
¹⁾ based on standard 2in1 bucket with SWA 33 quick coupler mounting and UNI-35-3C teeth

²⁾ limited digging depth due to mounting for SWA 33 quick coupler

³⁾ limited digging depth due to mounting for SWA 48 quick coupler

⁴⁾ reduced capacity with direct mounting

2in1 bucket 03



Machine range

Liebherr machines

Wheeled excavator - Compact	A 918 Compact
Wheeled excavator	A 916 - A 918
Crawler excavator - Compact	R 920 Compact
Railroad excavator	A 922 Rail - A 924 Rail

Other machine makes

Weight class (see operating manual for exact specification)	approx. 16 - 19 t
--	-------------------

Dimensions / weights

Cutting width	mm	300 ¹⁾³⁾	400 ¹⁾³⁾	500 ¹⁾²⁾⁴⁾	650 ¹⁾²⁾	850 ¹⁾²⁾	1,050 ¹⁾²⁾	1,250 ¹⁾²⁾
Capacity	m ³	0.17 ⁵⁾	0.24 ⁵⁾	0.32	0.42	0.60	0.80	0.95
Weight	kg	280	290	413	450	510	584	628
Teeth		2	2	3	3	4	4	5

¹⁾ based on standard 2in1 bucket with SWA 33 quick coupler mounting and UNI-35-3C teeth

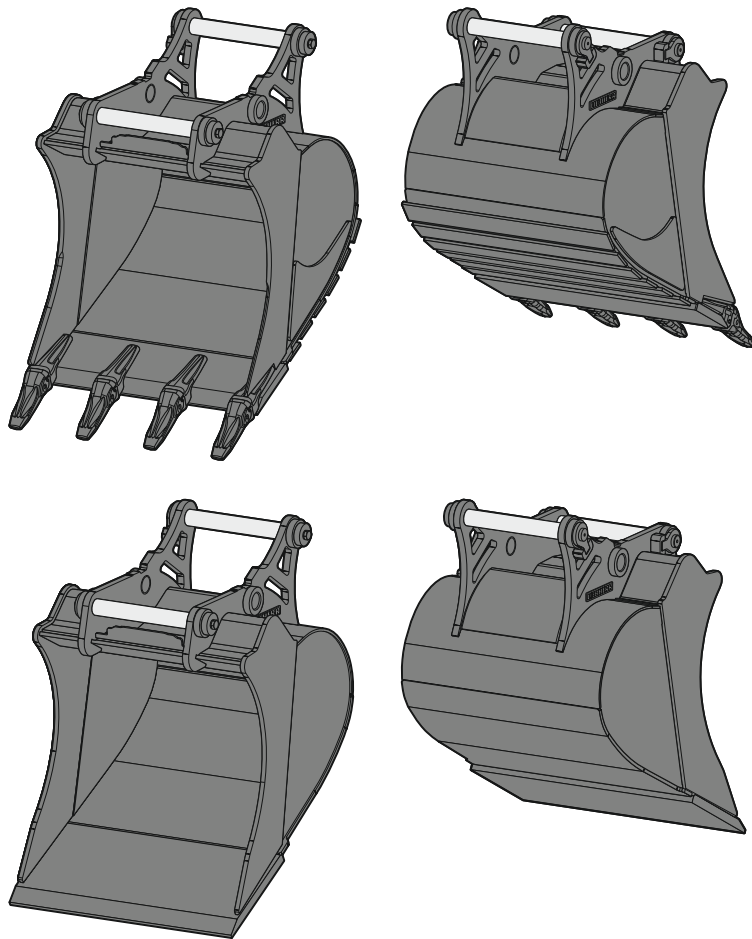
²⁾ based on standard 2in1 bucket with SWA 48 quick coupler mounting and UNI-35-3C teeth

³⁾ limited digging depth due to mounting for SWA 33 quick coupler

⁴⁾ limited digging depth due to mounting for SWA 48 quick coupler

⁵⁾ reduced capacity with direct mounting

2in1 bucket 04-01



Machine range

Liebherr machines

Wheeled excavator	A 920
Crawler excavator – Compact	R 926 Compact
Crawler excavator	R 918

Other machine makes

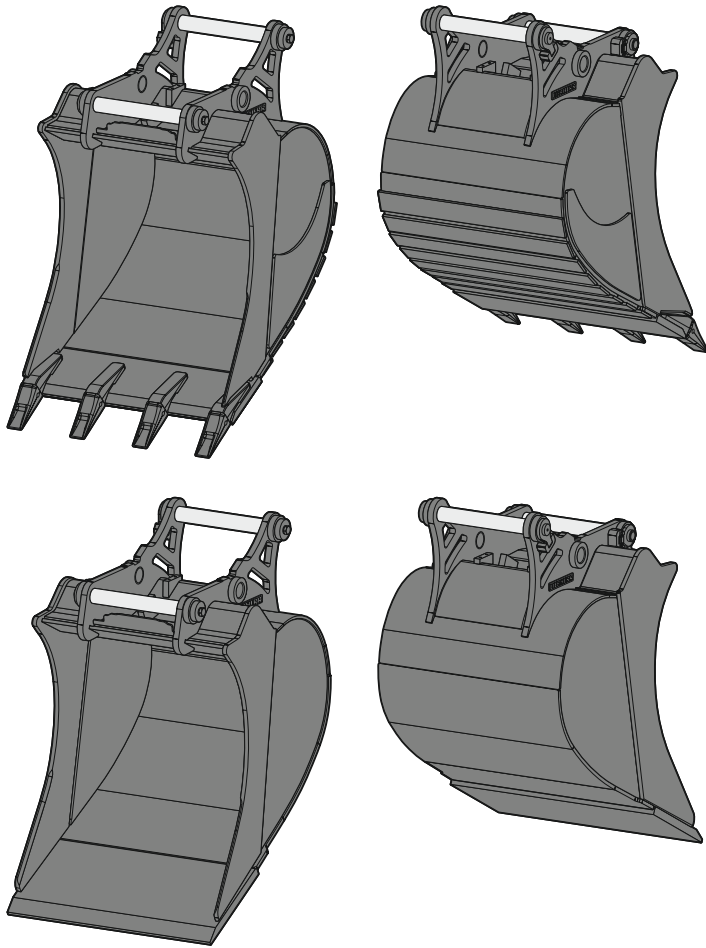
Weight class (see operating manual for exact specification)	approx. 18 – 21 t
--	-------------------

Dimensions¹⁾ / weights¹⁾

Cutting width	mm	650	850	1,050	1,250	1,400
Capacity	m ³	0.55	0.60	0.80	1.00	1.15
Weight	kg	587	627	707	807	526
Teeth		3	3	4	5	5

¹⁾ based on standard 2in1 bucket with SWA 48 quick coupler mounting and Z 35 C teeth

2in1 bucket 04-02



Machine range

Liebherr machines

Wheeled excavator	A 924 – A 924 Heavy Lift
Crawler excavator – Compact	R 936 Compact
Crawler excavator	R 922 – R 930

Other machine makes

Weight class	approx. 19 – 28 t
(see operating manual for exact specification)	

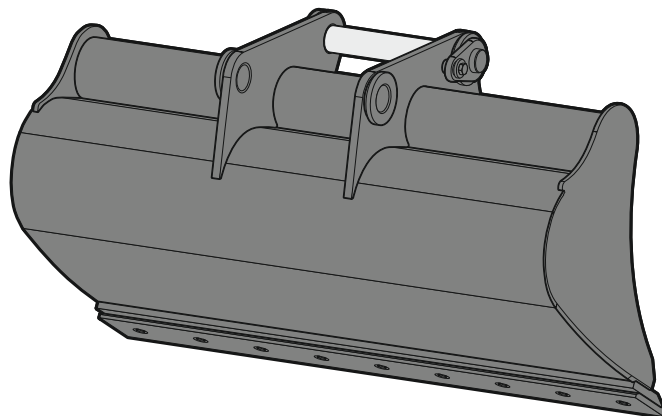
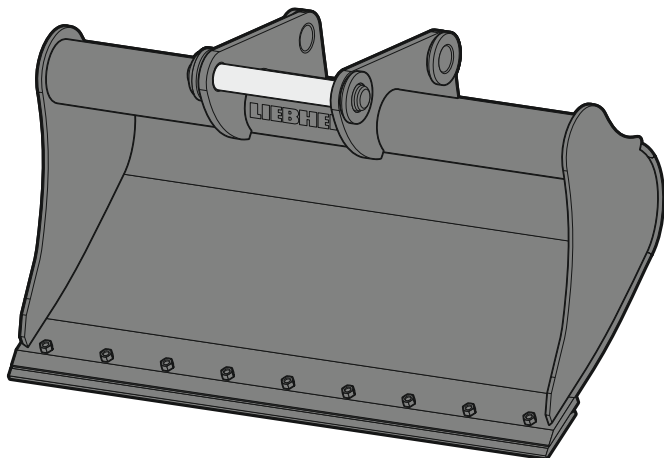
Dimensions¹⁾ / weights¹⁾

Cutting width	mm	650	850	1,050	1,250	1,400	1,500	1,600	1,700	1,800
Capacity	m ³	0.55	0.75	0.95	1.15	1.35	1.45	1.55	1.85	2.00
Weight	kg	612	697	787	882	942	978	1,016	1,179	1,223
Teeth		3	3	4	5	5	5	5	6	6

¹⁾ based on standard 2in1 bucket with SWA 48 quick coupler mounting and Z 40 C teeth

Universal bucket 02

Optimal in combination with a tilt unit or a tiltrotator



Machine range

Liebherr machines

Wheeled excavator - Compact	A 913 Compact - A 918 Compact
Wheeled excavator	A 914 - A 918
Crawler excavator - Compact	R 914 Compact

Other machine makes

Weight class (see operating manual for exact specification)	approx. 13 - 18 t
--	-------------------

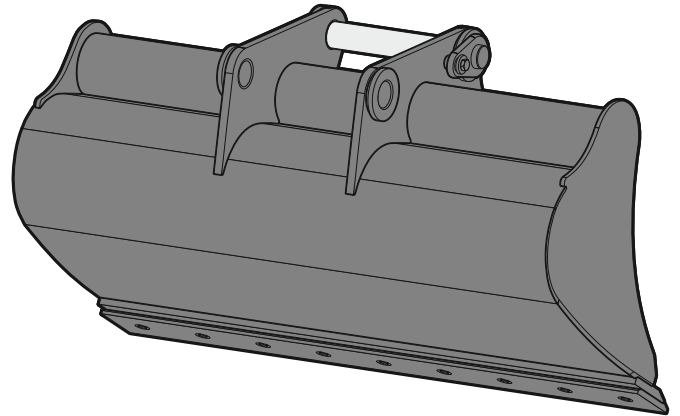
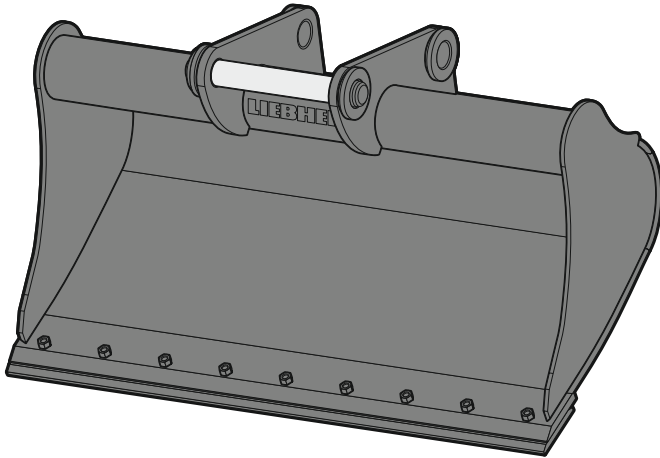
Dimensions¹⁾ / weights¹⁾

Cutting width	mm	1,400
Capacity	m ³	0.40
Weight	kg	227

¹⁾ based on standard universal bucket with SWA 33 quick coupler mounting

Universal bucket 03

Optimal in combination with a tilt unit or a tiltrotator



Machine range

Liebherr machines

Wheeled excavator - Compact	A 913 Compact - A 918 Compact
Wheeled excavator	A 914 - A 918
Crawler excavator - Compact	R 914 Compact - R 920 Compact
Railroad excavator	R 914 Rail / A 922 Rail - A 924 Rail

Other machine makes

Weight class (see operating manual for exact specification)	approx. 13 - 18 t
--	-------------------

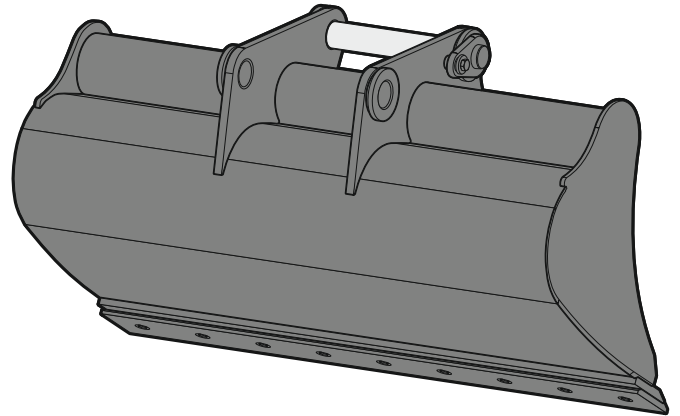
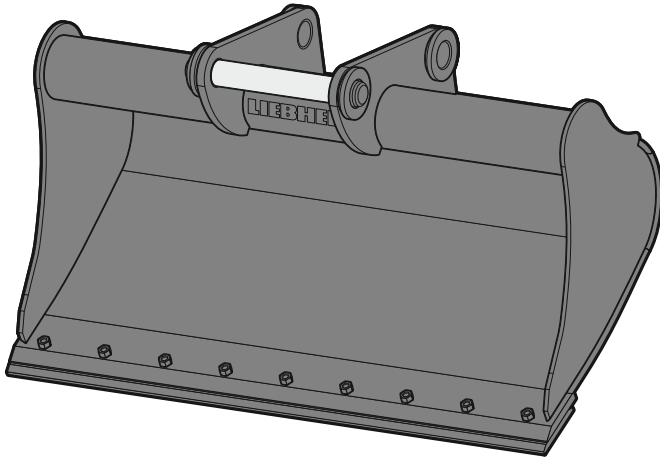
Dimensions¹⁾ / weights¹⁾

Cutting width	mm	1,500
Capacity	m ³	0.60
Weight	kg	368

¹⁾ based on standard universal bucket with SWA 33 quick coupler mounting

Universal bucket 04

Optimal in combination with a tilt unit or a tiltrotator



Machine range

Liebherr machines

Wheeled excavator - Compact	A 918 Compact
Wheeled excavator	A 916 - A 924 Heavy Lift
Crawler excavator - Compact	R 920 Compact - R 926 Compact
Crawler excavator	R 918 - R 928

Other machine makes

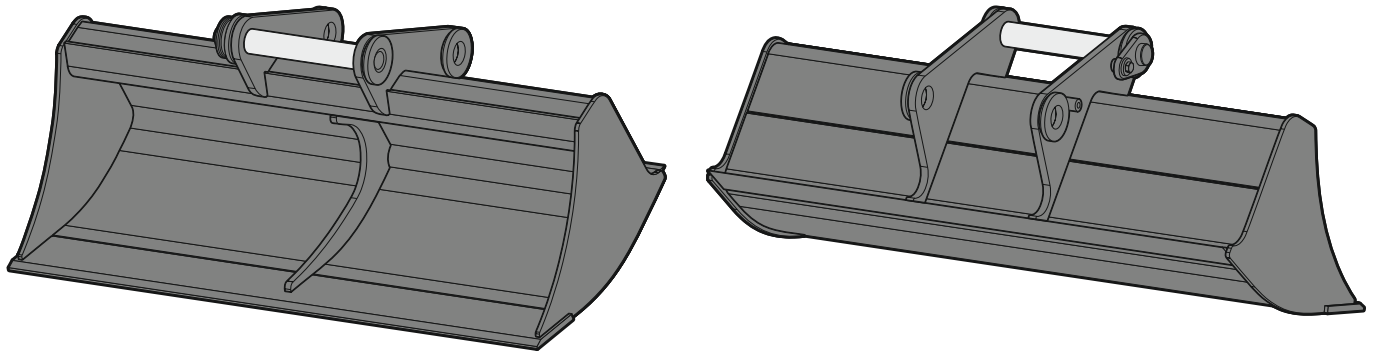
Weight class (see operating manual for exact specification)	approx. 16 - 26 t
--	-------------------

Dimensions¹⁾ / weights¹⁾

Cutting width	mm	1,600	1,600
Capacity	m ³	0.80	1.00
Weight	kg	473	496

¹⁾ based on standard universal bucket with SWA 48 quick coupler mounting

Ditch cleaning bucket (rigid) 01



Machine range

Liebherr machines

Wheeled excavator - Compact

| A 910 Compact - A 913 Compact

Other machine makes

Weight class

(see operating manual for exact specification)

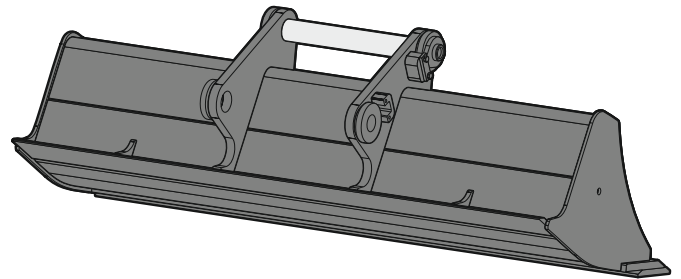
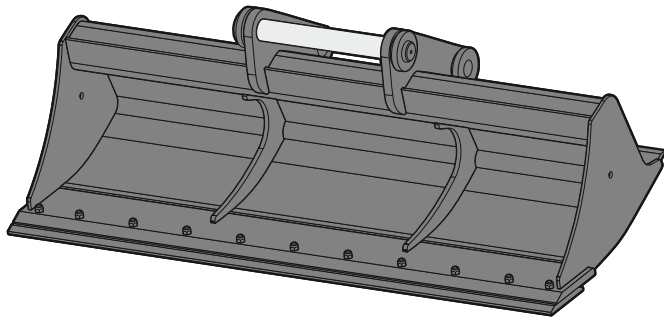
| approx. 10 - 12 t

Dimensions¹⁾ / weights¹⁾

Cutting width	mm	1,300	1,500
Capacity	m ³	0.27	0.33
Weight	kg	194	214

¹⁾ based on ditch cleaning bucket (rigid) with SWA 33 quick coupler mounting and rear edge

Ditch cleaning bucket (rigid) 02



Machine range

Liebherr machines

Wheeled excavator - Compact	A 914 Compact - A 918 Compact
Wheeled excavator	A 914 - A 918
Crawler excavator - Compact	R 914 Compact - R 920 Compact

Other machine makes

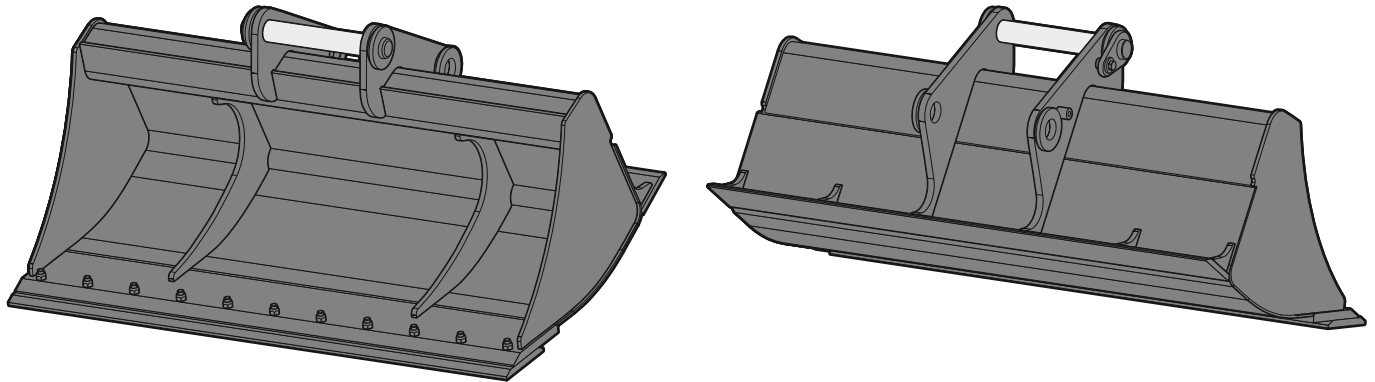
Weight class (see operating manual for exact specification)	approx. 14 - 18 t
--	-------------------

Dimensions¹⁾ / weights¹⁾

Cutting width	mm	1,500	2,000	2,000
Capacity	m ³	0.50	0.48	0.65
Weight	kg	362	351	385

¹⁾ based on ditch cleaning bucket (rigid) with SWA 33 quick coupler mounting and rear edge

Ditch cleaning bucket (rigid) 02B



Machine range

Liebherr machines

Wheeled excavator - Compact	A 914 Compact - A 918 Compact
Wheeled excavator	A 914 - A 918
Railroad excavator	R 914 Rail / A 922 Rail - A 924 Rail

Other machine makes

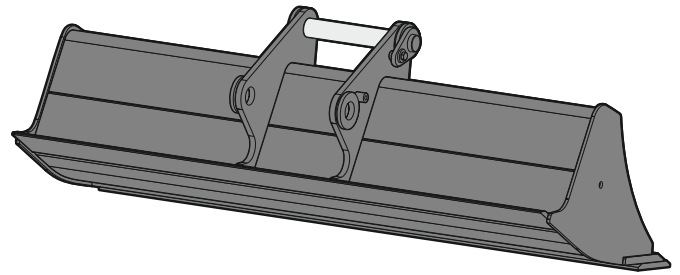
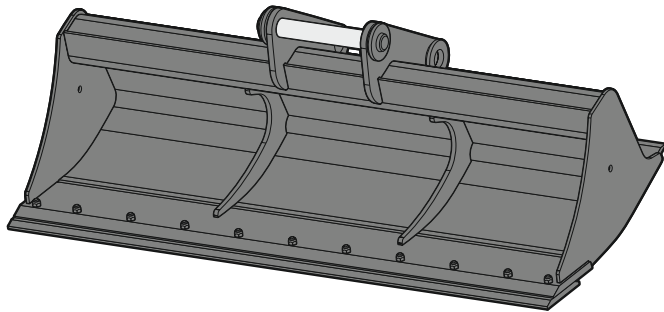
Weight class (see operating manual for exact specification)	approx. 14 - 18 t
--	-------------------

Dimensions¹⁾ / weights¹⁾

Cutting width	mm	600	800	1,000	1,200	1,400	1,600	1,800	2,000
Capacity	m ³	0.17	0.25	0.30	0.38	0.45	0.50	0.57	0.65
Weight	kg	167	196	225	255	293	330	360	390

¹⁾ based on ditch cleaning bucket (rigid) with SWA 33 quick coupler mounting and rear edge

Ditch cleaning bucket (rigid) – rail



Machine range

Liebherr machines

Railroad excavator

| R 914 Rail / A 922 Rail – A 924 Rail

Other machine makes

Weight class

(see operating manual for exact specification)

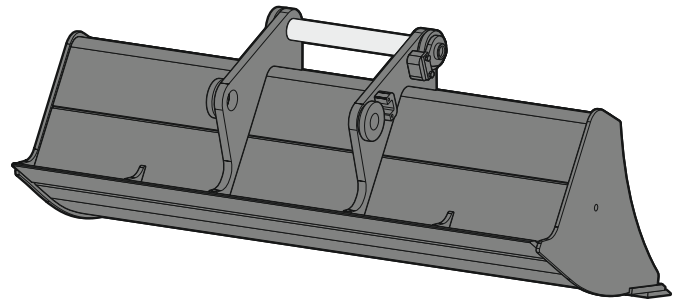
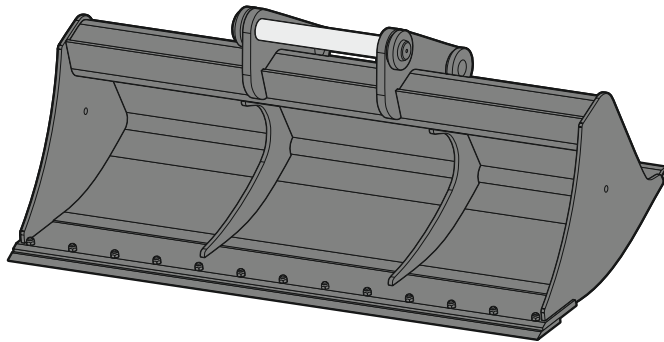
| approx. 22 – 24 t

Dimensions¹⁾ / weights¹⁾

Cutting width	mm	1,600	2,000	2,000
Capacity	m ³	0.80	0.48	0.65
Weight	kg	451	351	385

¹⁾ based on ditch cleaning bucket (rigid) – rail with SWA 33 quick coupler mounting and rear edge

Ditch cleaning bucket (rigid) 03



Machine range

Liebherr machines

Wheeled excavator

| A 920

Other machine makes

Weight class

(see operating manual for exact specification)

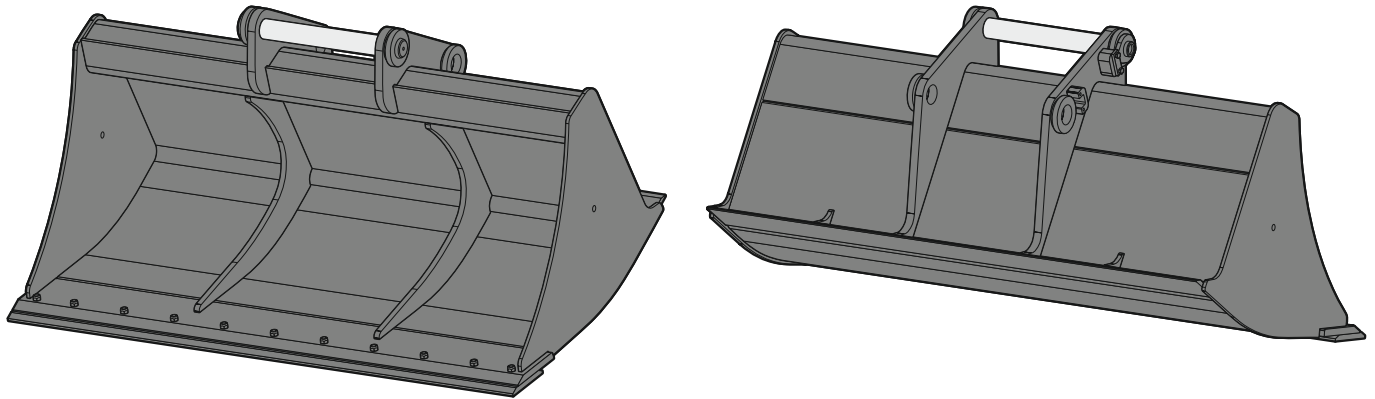
| approx. 16 - 19 t

Dimensions¹⁾ / weights¹⁾

Cutting width	mm	2,000	2,400
Capacity	m ³	0.70	0.85
Weight	kg	522	605

¹⁾ based on ditch cleaning bucket (rigid) with SWA 48 quick coupler mounting and rear edge

Ditch cleaning bucket (rigid) 04



Machine range

Liebherr machines

Wheeled excavator	A 924 - A 924 Heavy Lift
Crawler excavator - Compact	R 926 Compact
Crawler excavator	R 922 - R 928

Other machine makes

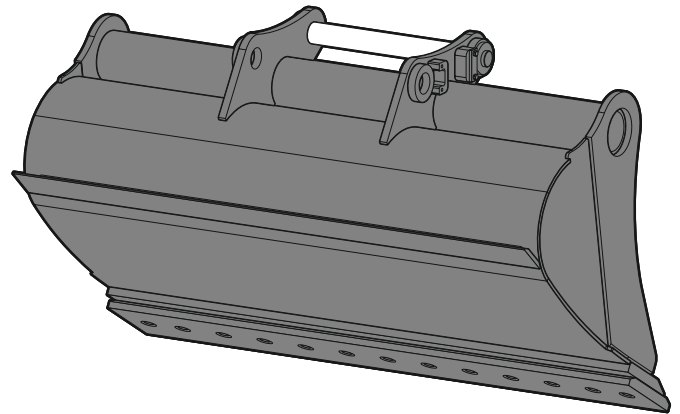
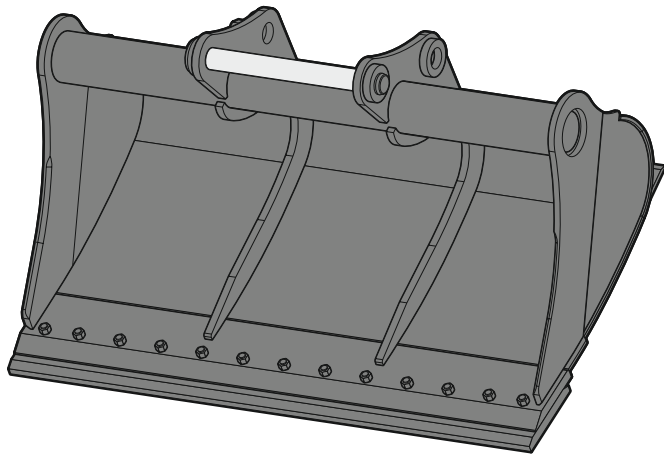
Weight class (see operating manual for exact specification)	approx. 18 - 28 t
--	-------------------

Dimensions¹⁾ / weights¹⁾

Cutting width	mm	1,500	2,000	2,000	2,400
Capacity	m ³	0.50	0.70	1.20	0.85
Weight	kg	425	522	637	605

¹⁾ based on ditch cleaning bucket (rigid) with SWA 48 quick coupler mounting and rear edge

Ditch cleaning bucket (rigid) 05



Machine range

Liebherr machines

Crawler excavator – Compact	R 936 Compact
Crawler excavator	R 930 – R 934

Other machine makes

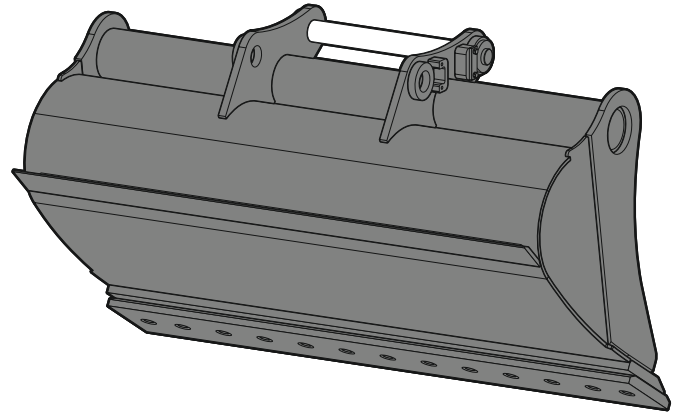
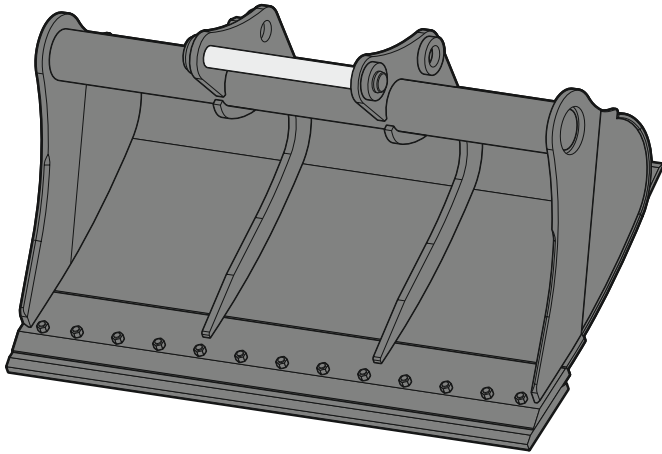
Weight class (see operating manual for exact specification)	approx. 28 – 35 t
--	-------------------

Dimensions¹⁾ / weights¹⁾

Cutting width	mm	2,000	2,400
Capacity	m ³	0.70	1.15
Weight	kg	550	718

¹⁾ based on ditch cleaning bucket (rigid) with SWA 48 quick coupler mounting and rear edge

Ditch cleaning bucket (rigid) 06



Machine range

Liebherr machines

Crawler excavator

R 938 - R 945

Other machine makes

Weight class

(see operating manual for exact specification)

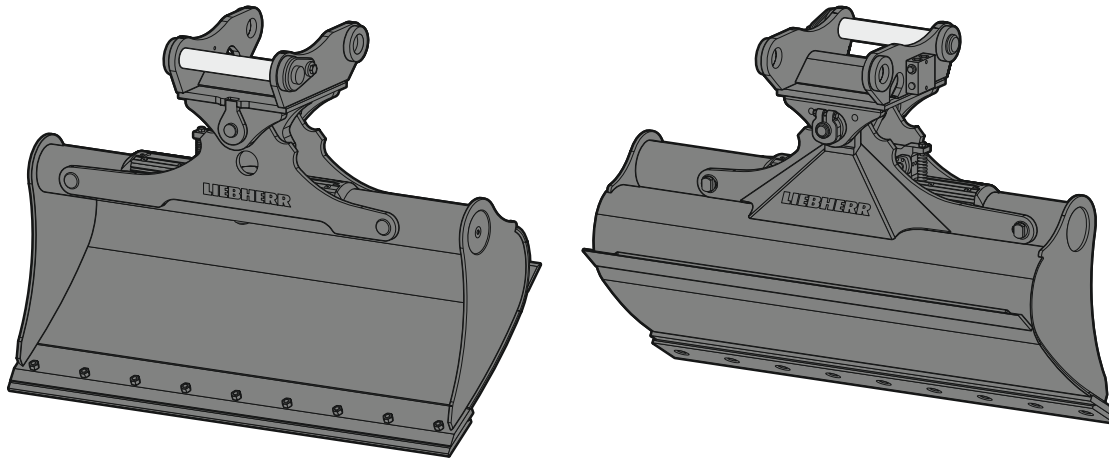
approx. 37 - 45 t

Dimensions¹⁾ / weights¹⁾

Cutting width	mm	2,200	2,400	2,800	2,800
Capacity	m ³	1.65	1.50	2.60	2.90
Weight	kg	1,050	964	1,522	1,561

¹⁾ based on ditch cleaning bucket (rigid) with SWA 66 quick coupler mounting and rear edge

Ditch cleaning bucket 80



Machine range

Liebherr machines

Wheeled excavator - Compact

| A 910 Compact - A 913 Compact

Other machine makes

Weight class

(see operating manual for exact specification)

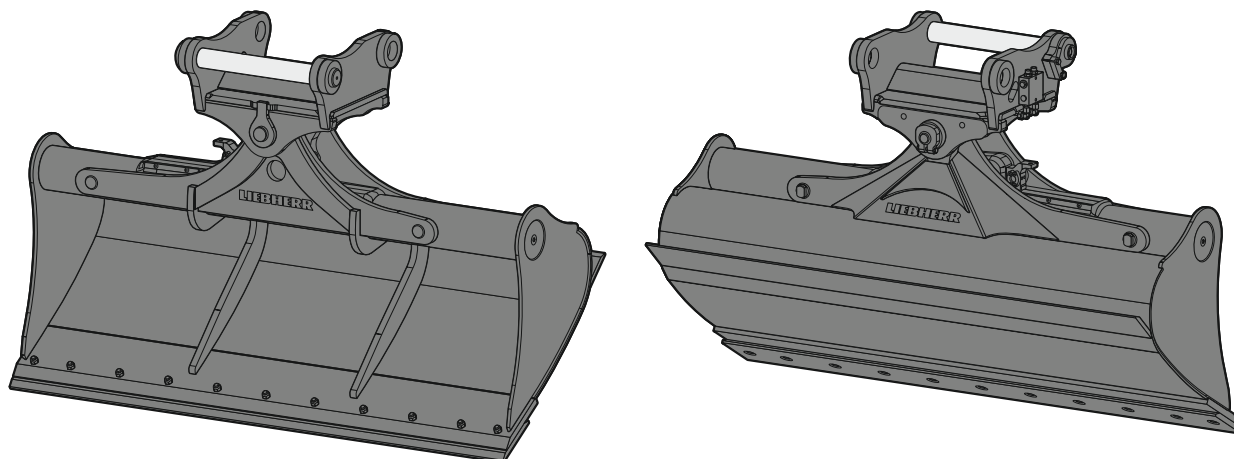
| approx. 10 - 13 t

Dimensions¹⁾ / weights¹⁾

Cutting width	mm	1,200	1,300	1,500	1,500	1,700	1,700
Capacity	m ³	0.29	0.28	0.33	0.36	0.37	0.41
Weight	kg	345	305	335	420	395	440
Tilt angle		2 x 50°	2 x 45°	2 x 45°	2 x 50°	2 x 45°	2 x 50°

¹⁾ based on standard tilting ditch cleaning bucket with SWA 33 quick coupler mounting and rear edge

Ditch cleaning bucket 90



Machine range

Liebherr machines

Wheeled excavator - Compact	A 914 Compact - A 918 Compact
Wheeled excavator	A 914 - A 924 Heavy Lift
Crawler excavator - Compact	R 914 Compact - R 926 Compact
Crawler excavator	R 918 - R 928
Railroad excavator	R 914 Rail/A 922 Rail - A 924 Rail

Other machine makes

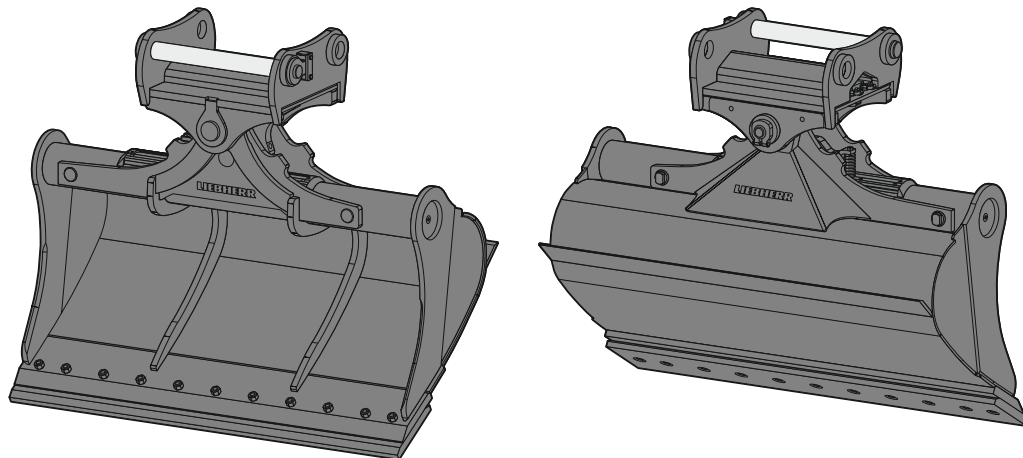
Weight class (see operating manual for exact specification)	approx. 14 - 30 t
--	-------------------

Dimensions¹⁾ / weights¹⁾

Cutting width	mm	1,600	1,600	2,000	2,000	2,000	2,200	2,200	2,200	2,400	2,400	2,800
Capacity	m ³	0.55	0.80	0.50	0.70	1.00	0.80	1.15	1.40	0.85	1.25	1.85
Weight	kg	690	850	695	875	935	910	985	995	890	1,000	1,090
Tilt angle		2 x 50°	2 x 50°	2 x 50°	2 x 50°	2 x 50°	2 x 50°	2 x 50°	2 x 50°	2 x 50°	2 x 50°	2 x 50°

¹⁾ based on standard tilting ditch cleaning bucket with SWA 48 quick coupler mounting and rear edge

Ditch cleaning bucket 100



Machine range

Liebherr machines

Crawler excavator – Compact	R 936 Compact
Crawler excavator	R 930 – R 945

Other machine makes

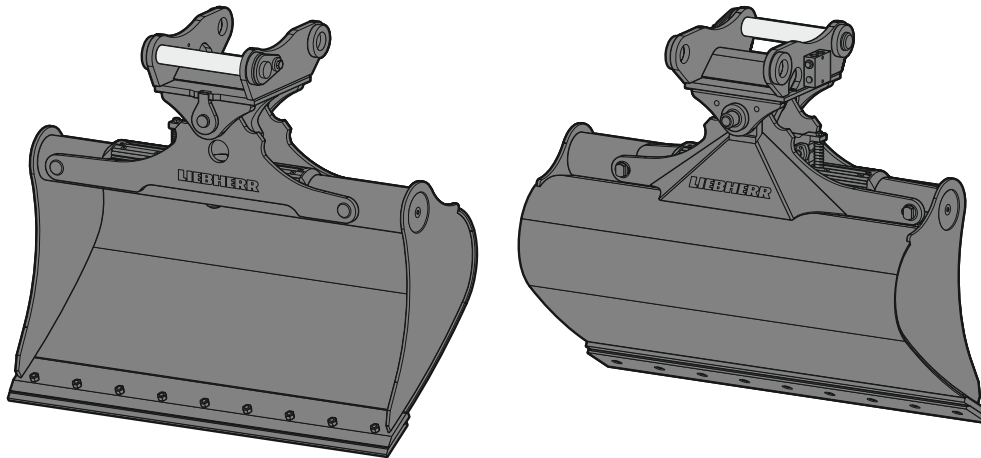
Weight class (see operating manual for exact specification)	approx. 25 – 35 t
--	-------------------

Dimensions¹⁾ / weights¹⁾

Cutting width	mm	2,000	2,000	2,000	2,200	2,400	2,400
Capacity	m ³	0.70	1.20	1.45	1.65	0.85	1.45
Weight	kg	1,375	1,520	1,600	1,675	1,480	1,625
Tilt angle		2 x 50°	2 x 50°	2 x 50°	2 x 50°	2 x 50°	2 x 50°

¹⁾ based on standard tilting ditch cleaning bucket with SWA 66 quick coupler mounting and rear edge

Tilt bucket 80



Machine range

Liebherr machines

Wheeled excavator - Compact

| A 910 Compact - A 913 Compact

Other machine makes

Weight class

(see operating manual for exact specification)

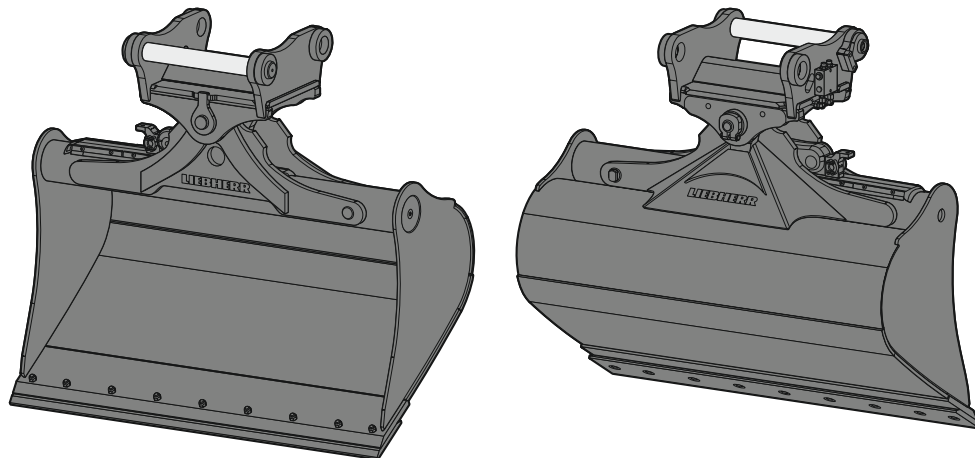
| approx. 10 - 14 t

Dimensions¹⁾ / weights¹⁾

Cutting width	mm	1,400	1,400
Capacity	m ³	0.40	0.50
Weight	kg	420	430
Tilt angle		2 x 50°	2 x 50°

¹⁾ based on standard tilt bucket with SWA 33 quick coupler mounting

Tilt bucket 90



Machine range

Liebherr machines

Wheeled excavator - Compact	A 914 Compact - A 918 Compact
Wheeled excavator	A 914 - A 924 Heavy Lift
Crawler excavator - Compact	R 914 Compact - R 926 Compact
Crawler excavator	R 918 - R 928
Railroad excavator	R 914 Rail/A 922 Rail - A 924 Rail

Other machine makes

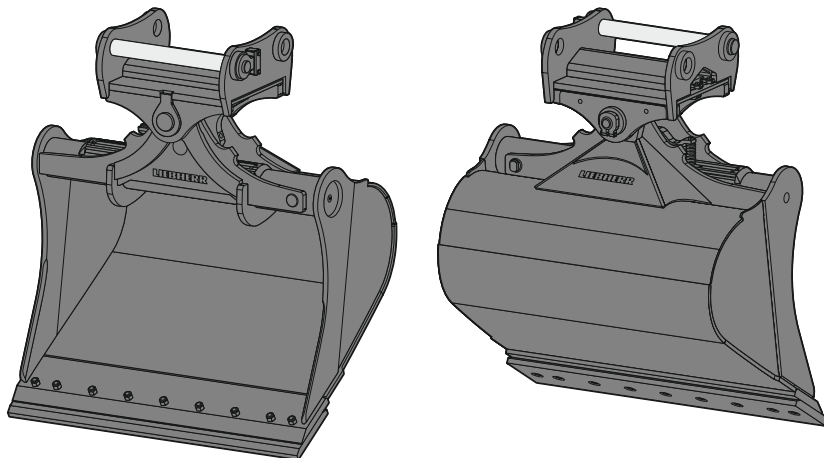
Weight class (see operating manual for exact specification)	approx. 14 - 26 t
--	-------------------

Dimensions¹⁾ / weights¹⁾

Cutting width	mm	1,400	1,500	1,500	1,600	1,600	1,600	1,600
Capacity	m ³	0.55	0.60	1.20	0.80	1.00	1.35	1.55
Weight	kg	715	680	970	820	890	970	1,030
Tilt angle		2 x 50°	2 x 50°	2 x 50°	2 x 50°	2 x 50°	2 x 50°	2 x 50°

¹⁾ based on standard tilt bucket with SWA 48 quick coupler mounting

Tilt bucket 100



Machine range

Liebherr machines

Crawler excavator – Compact	R 936 Compact
Crawler excavator	R 930 – R 945

Other machine makes

Weight class (see operating manual for exact specification)	approx. 25 – 35 t
--	-------------------

Dimensions¹⁾ / weights¹⁾

Cutting width	mm	1,600	1,600	1,700 ²⁾	1,800	1,800
Capacity	m ³	1.45	1.75	1.85	1.60	2.00 ²⁾
Weight	kg	1,520	1,630	1,800	1,610	1,860
Tilt angle		2 x 50°	2 x 50°	2 x 50°	2 x 50°	2 x 50°

¹⁾ based on standard tilt bucket with SWA 66 quick coupler mounting

²⁾ HD version

UNI tooth system

The low construction height and the narrow, self-sharpening tooth shape makes the Liebherr UNI system ideal for best digging with low penetration resistance. Highly wear-resistant steel assures the familiar reliability even under tough conditions that has already proven its worth among wheel loaders. The side clamping sleeve locking mechanism enables simple and efficient tooth replacement.



C tooth

Features	Symmetrical cap with front cut-away section, self-sharpening, can be rotated.
Areas of use	For light to medium ground hardness (loamy sand, gravel, soft brown coal, soft / medium clay etc.)



CR tooth

Features	Cap with large material volume for long service life when used in wear-intensive operations.
Areas of use	For particularly abrasive ground (granite, basalt, sandstone, stone containing quartz etc.)



R tooth

Features	Pointed tooth for good penetration, can be rotated.
Areas of use	For very hard and frozen ground, rock that is difficult to break (limestone, slate, brown coal, mining of wall gravel etc.).



Tooth holder (single arm)

Features	For precise leveling.
-----------------	-----------------------

Z tooth system

The optimised tooth design leads to an increase in efficiency on the construction site with the Liebherr Z system. The low digging resistance, the self-sharpening tooth shape as well as easy tooth replacement without hammering are arguments for the Liebherr Z system. The teeth are made from high tensile steel, which is distinguished by the highest level of wear resistance and long service life.



C tooth

Features	The conical shape helps to achieve very good penetration in cohesive ground.
Areas of use	Types of ground that are easy to break up and ground that is little cohesive (e.g. loose, loamy sand, fine to medium gravel, moist and soft clay)



CL tooth

Features	Long, drawn-out point with sharp edge for very good penetration properties.
Areas of use	Medium and cohesive ground to ground with average plasticity (e.g. hard, loamy sand, medium clay, fine to medium clay)



CR tooth

Features	The long, drawn-out point enables very good penetration in aggregate material. The broad and thick base of the tooth facilitates a long service life under wear-intensive conditions.
Areas of use	Abrasive ground, rock (e.g. granite, basalt, sandstone; mainly in connection with front shovel deployment)



R tooth

Features	Low cutting width and large wear volume result in high specific penetration force and service life.
Areas of use	Heavy to break ground, particularly abrasive ground, rock (e.g. limestone, slate, very hard clay, brown coal)



P tooth

Features	Pointed tooth with good penetration capability even in hard stone.
Areas of use	Very hard, frozen ground, rock that is very difficult to break (e.g. well set, unweathered shale)



PF tooth

Features	Fork tip with outstanding penetration in extremely compact ground. Can be fitted to corners of bucket as a supplement to the P-points in order to maintain tilt angle.
Areas of use	Very hard and frozen ground, rock that is difficult to break (e.g. well set, unweathered shale, heavy ore with medium and weak cracks, slag heaps from steelworks)



Tooth holder (single arm)

For precise leveling.



Standard tooth holder (two arm)

For tough operations, particularly with intermediate tooth segments (shrouds).



Shrouds

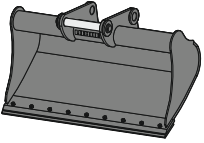
Reduces exposure of the bucket to impacts and abrasion, extending its wear life.

Suitable applications

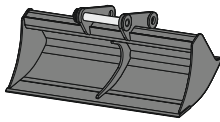
	Backhoe bucket - with teeth	Backhoe bucket - with cutting edge	2in1 bucket - with teeth	2in1 bucket - with cutting edge
Excavation of topsoil	•	••	•	••
Excavation of loosened material	•••	•••	•••	•••
Excavation of hard soil	•••	•	•••	•
Loading work	•••	•••	•••	•••
Undermining and exposing cables and pipes	○	•••	○	•••
Picking up and moving awkward items, large stones	•••	•••	•••	•••
Quarrying	•••	••	•••	••
Releasing and loosening hard and abrasive material	•••	○	•••	○
Pulling	○	••	○	••
Modelling earth walls	○	○	○	○
Grading work	○	••	○	••
Excavation of ditches with appropriate profile	○	••	○	••
Preparation of embankments	○	•	○	•
Work in the shoring	•••	•••	•••	•••
Filling foundations or walls	•••	•••	•••	•••
Working on track bed	••	••	••	••
Precise installation on sand of lines and pipes	•	••	•	••
Precise installation on sand of lines and pipes using tiltrotator	•	••	•	••
Working at a long reach (stick extension, embankment or MultiUser equipment)	•••	•••	•••	•••
Working in combination with a tilt unit (LITIU)	•••	•••	•••	•••
Working in combination with a tiltrotator	•••	•••	•	•

- = very good
- = good
- = satisfactory
- = sufficient or not suitable

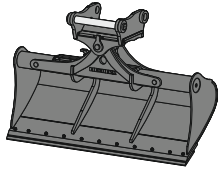
Universal bucket



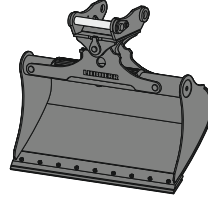
Ditch cleaning bucket (rigid)
- with rear edge



Ditch cleaning bucket
- with rear edge
- tiltable



Tilt bucket
- tiltable



•••	•••	•••	•••
••	••	••	••
○	○	○	○
•••	•••	•••	•••
•	•	•	•
•	•	○	○
○	○	○	○
○	○	○	○
•••	•••	•••	•••
•	•	•••	•••
••	••	•••	•••
••	••	○	•••
••	••	•••	•••
○	○	○	○
••	••	••	••
••	••	••	○
•	•	•••	•••
•••	•••	•••	•••
••	••	•••	••
•••	•••	○	○
•••	•••	○	○

Equipment

Equipment / Options

	Backhoe bucket 01	Backhoe bucket 02	Backhoe bucket 03	Backhoe bucket 04-01	Backhoe bucket 04-02	Backhoe bucket 05	Backhoe bucket 06	Backhoe bucket 07	Backhoe bucket 08	Backhoe bucket 09	2in1 bucket 01	2in1 bucket 02	2in1 bucket 03	2in1 bucket 04-01	2in1 bucket 04-02	Universal bucket 02	Universal bucket 03	Universal bucket 04	Ditch cleaning bucket (rigid) 01	Ditch cleaning bucket (rigid) 02	Ditch cleaning bucket (rigid) 02B	Ditch cleaning bucket (rigid) - rail	Ditch cleaning bucket (rigid) 03	Ditch cleaning bucket (rigid) 04	Ditch cleaning bucket (rigid) 05	Ditch cleaning bucket (rigid) 06	Ditch cleaning bucket 80	Ditch cleaning bucket 90	Ditch cleaning bucket 100	Tilt bucket 80	Tilt bucket 90	Tilt bucket 100		
Tooth UNI-25-2C	+																																	
Tooth UNI-25-2CR	+																																	
Tooth UNI-25-2R																																		
Tooth UNI-35-3C		+	+																															
Tooth UNI-35-3CR		+	+																															
Tooth UNI-35-3R		+	+																															
Tooth Z 35 C			+	+																														
Tooth Z 35 CL			+	+																														
Tooth Z 35 P			+	+																														
Tooth Z 35 PF			+	+																														
Tooth Z 40 C				+	+																													
Tooth Z 40 CL				+	+																													
Tooth Z 40 P				+	+																													
Tooth Z 40 PF				+	+																													
Tooth Z 40 R				+	+									+																				
Tooth Z 50 C						+	+																											
Tooth Z 50 CL						+	+																											
Tooth Z 50 P						+	+																											
Tooth Z 50 PF						+	+																											
Tooth Z 50 R						+	+																											
Tooth Z 70 C							+	+	+																									
Tooth Z 70 CL							+	+	+																									
Tooth Z 70 CR							+	+	+																									
Tooth Z 70 P							+	+	+																									
Tooth Z 70 R							+	+	+																									
Tooth Z 90 C										+	+																							
Tooth Z 90 CL										+	+																							
Tooth Z 90 CR										+	+																							
Tooth Z 90 P										+	+																							
Tooth Z 90 R										+	+																							
Tooth Z 100 CL											+																							
Tooth Z 100 CR											+																							
Tooth Z 100 P											+																							
Single arm tooth holder	+	+	+	+	+						+	+	+	+	+																			
Two arm tooth holder			+	+	+	+	+	+	+	+																								
Cutting edge	+	+	+	+	+	+	+	+	+	+	+	+	+	+	+																			
Straight cutting edge with teeth	+	+	+	+	+	+	+	+	+	+	+	+	+	+	+																			
Semi-delta cutting edge with teeth						+ ⁶⁾	+ ⁶⁾																											
Rear cutting edge																			●/+ ¹⁾	●/+ ¹⁾	●	●/+ ¹⁾	●/+ ¹⁾	●/+ ¹⁾	●/+ ¹⁾	●/+ ¹⁾	●/+ ¹⁾	●	●	●				
Bolt-on cutting edge																			●/+ ¹⁾	●/+ ¹⁾	●	●/+ ¹⁾	●/+ ¹⁾	●/+ ¹⁾	●/+ ¹⁾	●/+ ¹⁾	●/+ ¹⁾	●	●	●				
Fitted cutting edge UNI	+	+	+								+	+	+						●/+ ¹⁾	●/+ ¹⁾	●	●/+ ¹⁾	●/+ ¹⁾	●/+ ¹⁾	●/+ ¹⁾	●/+ ¹⁾	●/+ ¹⁾	●	●	●	+	+	+	
Fitted cutting edge Z 35			+	+									+	+																				
Fitted cutting edge Z 40				+	+									+	+																			
Fitted cutting edge Z 50					+	+								+	+																			
HD version ²⁾	+	+	+	+	+	+	+	+	+	+	+	+	+	+	+																			
HDR version							+																											
HDV version							+	+	+	+																								
Load lift hook 5 t	+										+ ⁵⁾																							
Load lift hook 8 t		+	+								+ ⁵⁾	+ ⁵⁾																						
Load lift hook 12 t				+	+	+							+ ⁵⁾	+ ⁵⁾																				
Load lift hook 20 t							+																											
Load lift hook 27 t								+	+	+																								
Wear caps						+	+	+	+	+																								
Water boreholes							+	+	+	+																								
Signal contacts (5-pin) ³⁾⁴⁾																													+	+	+	+	+	
Signal contacts (14-pin) ³⁾																													+	+	+	+	+	
Sensor machine control system (Leica)																												+	+	+	+	+	+	

¹⁾ availability depending on bucket size ²⁾ availability depending on bucket width ³⁾ only possible in combination with LIKUFIX ⁴⁾ not possible with LIKUFIX 33

⁵⁾ not possible with limited digging depth ⁶⁾ on request

● = Standard, + = Option

The Liebherr Group



Global and independent: more than 70 years of success

Liebherr was founded in 1949 when, with the development of the world's first mobile tower crane, Hans Liebherr laid the foundations for a family business now employing nearly 50,000 people and comprising over 140 companies across every continent.

The parent company is Liebherr-International AG in Bulle, Switzerland, whose associates are exclusively members of the Liebherr family.

Leaders and pioneers

Liebherr is a pioneer and its forward-looking approach has seen it make important contributions to technology history over a wide variety of industries. Employees throughout the world continue to share the courage of the founder, sharing a passion to produce innovative products and a determination to provide world-leading equipment and machinery.

Diversified portfolio

The company is one of the world's biggest construction equipment manufacturers and provides high-quality, user-oriented products and services to sectors including: earthmoving, material handling, deep foundations, mining, mobile and crawler cranes, tower cranes, concrete production and distribution, maritime cranes, aerospace and transportation, gear technology and automation, refrigeration and freezing, components and hotels.

Customised care

Liebherr solutions are characterised by precision, implementation and longevity. The company is committed to technological excellence and to providing customers with solutions that match their needs exactly. That customer focus does not end with delivery of a product but continues through a comprehensive range of back-up and support services.

www.liebherr.com

Liebherr-Hydraulikbagger GmbH

Liebherrstraße 12 • 88457 Kirchdorf/Iller, Germany • Phone +49 7354 80-0 • Fax +49 7354 80-72 94
info.lhb@liebherr.com • www.liebherr.com • www.facebook.com/LiebherrConstruction