

---

# R 922 Litronic

---

## LIEBHERR

Crawler excavator



**Generation**  
8

**Operating weight**  
22,250–24,550 kg

**Engine**  
120 kW / 163 HP  
Stage V

**Bucket capacity**  
0.55–1.65 m<sup>3</sup>

# Experience the progress

## R 922

---

### ① Safety

- Panoramic visibility with no obstructions and camera on the rear and the right side equipment
- Lifiable console for easy and safe access to cab
- ROPS-certified cab structure: rollover protection
- Emergency exit via the rear cab window whatever the configuration of the excavator
- Right window and windshield in laminated and tinted glass

### ② Equipment

- Large choice of types and sizes of equipment
- Safety check valves for hoist and stick cylinders
- Longer lifespan of components and higher productivity thanks to automatic centralised lubrication system

### ③ Maintenance

- Innovative servicing concept, with service points accessible from ground level
- Lateral access to uppercarriage and large maintenance platform
- Engine oil, hydraulic oil, fuel and urea levels visible on the display

### ④ Comfort

- Spacious, air-conditioned work space
- Pneumatic seat with vertical and horizontal suspension
- Easy-to-use high resolution 9" colour touchscreen
- Completely retractable front cab window
- LED lighting as standard



## ⑤ Engine

- Liebherr engine that conforms with the Stage V European exhaust emissions standard
- Automatic engine idling and engine stop

## ⑥ Undercarriage

- Robust, reliable X-frame undercarriage, easy to secure thanks to its integrated eyelets
- Easy maintenance
- Maintenance-free travel gear and track rollers with lifetime lubrication
- Extra storage as an option



# Technical data



## Engine

<b>Rating per ISO 9249</b>	120 kW (163 HP) at 1,800 RPM
<b>Torque</b>	682 Nm at 1,400 RPM
<b>Model</b>	D924 A7-05 – FPT motor designed for Liebherr
<b>Type</b>	4 cylinder in-line
<b>Bore</b>	104 mm
<b>Stroke</b>	132 mm
<b>Displacement</b>	4.5 l
<b>Engine operation</b>	4-stroke diesel Common-Rail Turbo-charged and after-cooler
<b>Exhaust gas treatment</b>	Stage V DOC + SCR Filter Passive regeneration by thermo management
<b>Cooling system</b>	Water-cooled and oil cooler, after-cooled and fuel cooled
<b>Air cleaner</b>	Dry-type air cleaner with pre-cleaner
<b>Fuel tank</b>	400 l
<b>Urea tank</b>	46 l
<b>Electrical system</b>	
<b>Voltage</b>	24 V
<b>Batteries</b>	2 x 135 Ah / 12 V
<b>Alternator</b>	Three-phase current 28 V / 140 A
<b>Engine idling</b>	Sensor controlled



## Hydraulic controls

<b>Power distribution</b>	Via control valves, simultaneous and independent actuation of undercarriage, swing drive and equipment
<b>Electric servo circuit</b>	Electro-hydraulic control
<b>Equipment and swing</b>	Proportional via joystick levers
<b>Travel</b>	– Proportional control via foot pedals or removable levers – Automatic or manual speed adjustment
<b>Additional functions</b>	Proportional regulation via foot pedals or mini-joystick



## Hydraulic system

<b>Hydraulic system</b>	Positive Control hydraulic system. Demand-based, double independent pump flows Features high system dynamics and sensitivity provided by integrated system controlling
<b>Hydraulic pump</b>	
<b>For equipment and travel drive</b>	Liebherr, variable displacement, swashplate double pump
<b>Max. flow</b>	2 x 210 l/min.
<b>Max. pressure</b>	380 bar
<b>Pump management</b>	Electronic management synchronous to the control block. Open circuit for the rotation
<b>Hydraulic tank</b>	155 l
<b>Hydraulic system</b>	max. 320 l
<b>Filtration</b>	1 main return filter with integrated partial micro filtration (10 µm)
<b>Cooling system</b>	Compact cooler, consisting of a water cooler, sandwiched with hydraulic oil cooler and fuel and after-cooler cores and hydrostatically driven fan
<b>MODE selection</b>	Adjustment of engine and hydraulic performance via a mode pre-selector to match application, e.g. for especially economical and environmentally friendly operation or for maximum digging performance and heavy-duty jobs
<b>Engine speed and performance setting</b>	Stepless adjustment of engine output and hydraulic power via engine speed



## Swing drive

<b>Drive</b>	Liebherr swashplate motor with integrated brake valve and torque control
<b>Transmission</b>	Liebherr compact planetary reduction gears
<b>Swing ring</b>	Liebherr, sealed race ball bearing swing ring, internal teeth
<b>Swing speed</b>	0–12.9 RPM stepless
<b>Swing torque</b>	74.3 kNm
<b>Holding brake</b>	Wet multi-disc (spring applied, pressure released)



## Cab

<b>Cab</b>	ROPS safety cab structure (roll-over protection system according to ISO 12117-2:2008) with windscreen, totally or partially retractable (only upper part), under cab roof, LED work headlights integrated in the ceiling, a door with a sliding window (can be opened on both sides), large storing box and several stowing possibilities, shock-absorbing suspension, laminated right hand side and roof windows, all windows tinted, separate extensible window shades for the sunroof window and windscreen, cigarette lighter and 24 V plug, 12V plug, cup holder, mobile phone storage net
<b>Operator's seat</b>	Liebherr-Comfort seat, airsprung with automatic weight adjustment, vertical and longitudinal seat damping including consoles and joysticks. Seat and armrests adjustable separately and in combination (adjustable in length, height and inclination), seat heating as standard Oscillating consoles with seat, tiltable console left
<b>Arm consoles</b>	
<b>Operation and displays</b>	Large high-resolution operating unit, intuitive, colour display with touchscreen, video-compatible, numerous setting, control and monitoring options, e.g. air conditioning control, fuel consumption, machine and attachment parameters
<b>Air-conditioning</b>	Automatic air-conditioning, recirculated air function, fast de-icing and demisting at the press of a button, air vents can be operated via a menu. Recirculated air and fresh air filters can be easily replaced and are accessible from the outside. Heating-cooling unit, designed for extreme outside temperatures, sensors for solar radiation, inside and outside temperatures The air conditioning system contains fluorinated greenhouse gases
Refrigerant	R134a
Global warming potential	1,430
Quantity at 25 °C*	1,260 g
CO <sub>2</sub> equivalent	1.80 t
<b>Vibration emission**</b>	
Hand / arm vibrations	< 2.5 m/s <sup>2</sup> , according with ISO 5349-1:2001
Whole-body vibrations	< 0.5 m/s <sup>2</sup>
Measuring inaccuracy	According with standard EN 12096:1997
<b>Noise emission</b>	
ISO 6396	70 dB(A) = L <sub>PA</sub> (inside cab)
2000/14/EC	102 dB(A) = L <sub>WA</sub> (surround noise)



## Undercarriage

<b>Versions</b>	
NLC	Gauge 2,000 mm
SLC	Gauge 2,240 mm
LC	Gauge 2,390 mm
<b>Drive</b>	Liebherr swashplate motor with brake valves on both sides
<b>Transmission</b>	Liebherr planetary reduction gear
<b>Maximum travel speed</b>	3.1 km/h low range 5.9 km/h high range
<b>Drawbar pull on crawler</b>	236 kN
<b>Track components</b>	B60, D6C, maintenance-free
<b>Track rollers / Carrier rollers</b>	8 / 2
<b>Tracks</b>	Sealed and greased
<b>Track pads</b>	Triple grouser
<b>Holding brake</b>	Wet multi-disc (spring applied, pressure released)
<b>Brake valves</b>	Integrated into travel motor
<b>Lashing eyes</b>	Integrated



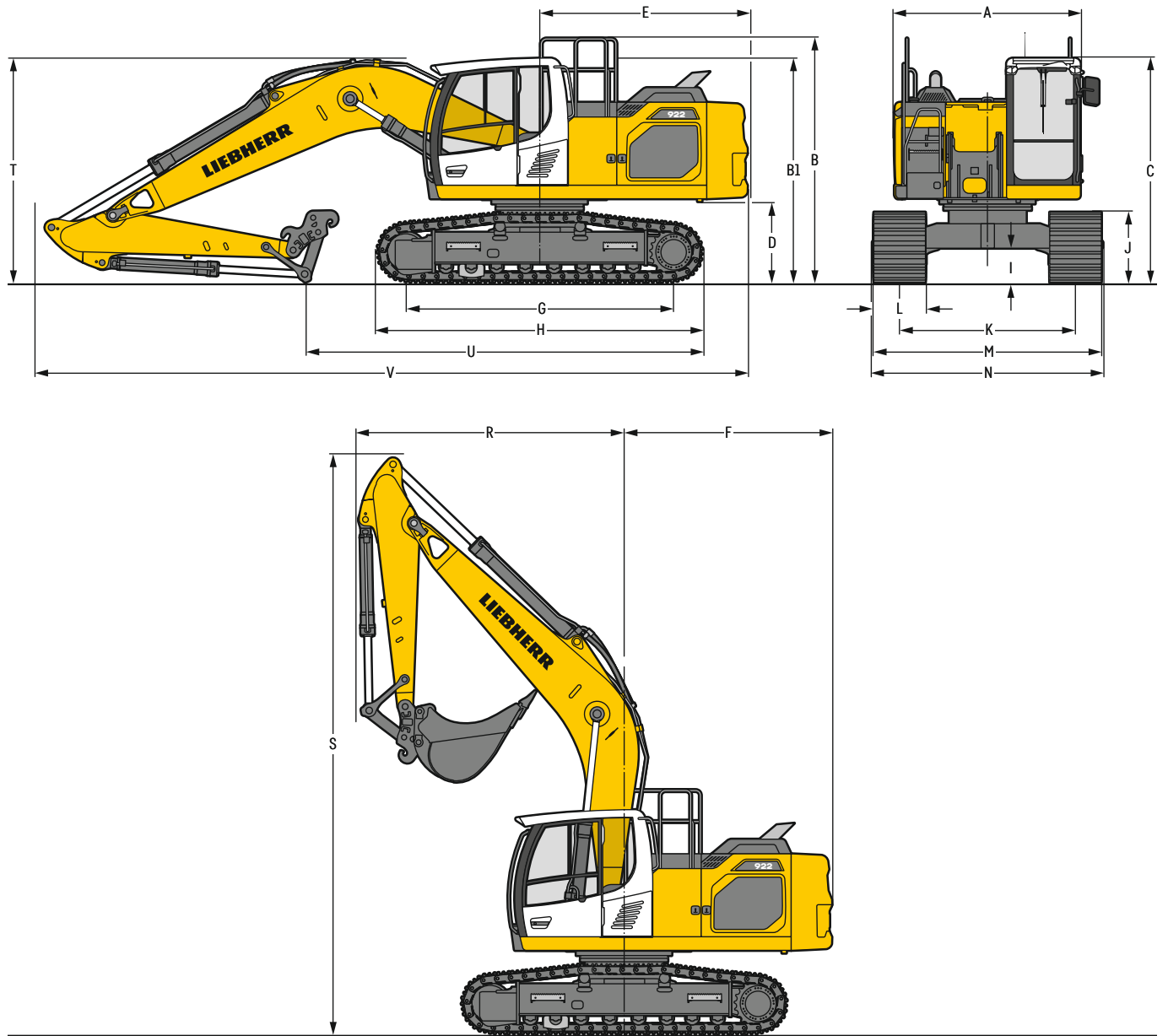
## Equipment

<b>Type</b>	Combination of resistant steel plates and cast steel components
<b>Hydraulic cylinders</b>	Liebherr cylinders with seal and guidance systems
<b>Bearings</b>	Sealed, low maintenance
<b>Lubrication</b>	Liebherr central lubrication system
<b>Hydraulic connections</b>	Pipes and hoses equipped with SAE split-flange connections
<b>Buckets</b>	Standard equipped with Liebherr tooth system

\* Valid for standard machine without operator's cab elevation and without height adjustable cab

\*\* For the risk assessment according to 2002/44/EC see ISO/TR 25398:2006

# Dimensions



		NLC				SLC				LC							
		mm				mm				mm							
A	Upper-carriage width	2,555 <sup>2)</sup>				2,555 <sup>2)</sup>				2,555 <sup>2)</sup>							
B	Upper-carriage height	3,335				3,335				3,335							
B1	Upper-carriage height (handrails folded)	3,060				3,060				3,060							
C	Cab height	3,060				3,060				3,060							
D	Counterweight ground clearance	1,100				1,100				1,100							
E	Rear-end length	2,830				2,830				2,830							
F	Tail swing radius	2,880				2,880				2,880							
G	Wheelbase	3,640				3,640				3,640							
H	Undercarriage length	4,435				4,435				4,435							
I	Undercarriage ground clearance	485				485				485							
J	Track height	960				960				960							
K	Track gauge	2,000				2,240				2,390							
L	Track pad width	500	600	700	750	500	600	700	750	800	900	500	600	700	750	800	900
M	Width over tracks	2,500	2,500	2,700	2,750	2,740	2,840	2,940	2,990	3,040	3,140	2,890	2,990	3,090	3,140	3,190	3,290
N	Width over steps	2,500	2,500	2,700 <sup>1)</sup>	2,700 <sup>1)</sup>	2,775	2,775	2,975 <sup>1)</sup>	2,975 <sup>1)</sup>	2,975 <sup>1)</sup>	3,075 <sup>1)</sup>	2,925	2,925	3,125 <sup>1)</sup>	3,125 <sup>1)</sup>	3,125 <sup>1)</sup>	3,225 <sup>1)</sup>

<sup>1)</sup> width with removable steps

<sup>2)</sup> without door stop device and spacer

		Stick length	Mono boom 5.70 m with quick coupler	Mono boom straight 5.90 m with quick coupler	Two-piece boom 5.90 m with quick coupler	Mono boom offset 5.65 m with quick coupler
		m	mm	mm	mm	mm
R	Front swing radius	2.50	3,650	3,050	2,500	3,350
		2.90	3,650	3,050	2,600	3,350
		3.50	3,600	2,850	2,550	3,350
S	Height with boom up	2.50	7,900	8,600	8,700	7,950
		2.90	3,050	2,850	2,800	2,900
		3.50	3,100	3,000	2,950	2,900
T	Boom height	2.50	3,050	3,050	3,050	2,900
		2.90	5,400	5,900	5,900	8,050
		3.50	5,050	5,650	5,600	7,650
U	Length on ground	2.50	7,150	5,000	5,000	7,000
		2.90	9,700	9,950	9,900	9,550
		3.50	1,15 m <sup>3</sup>	1,15 m <sup>3</sup>	1,15 m <sup>3</sup>	1,15 m <sup>3</sup>
V	Overall length					
	Bucket					

## Transport dimensions

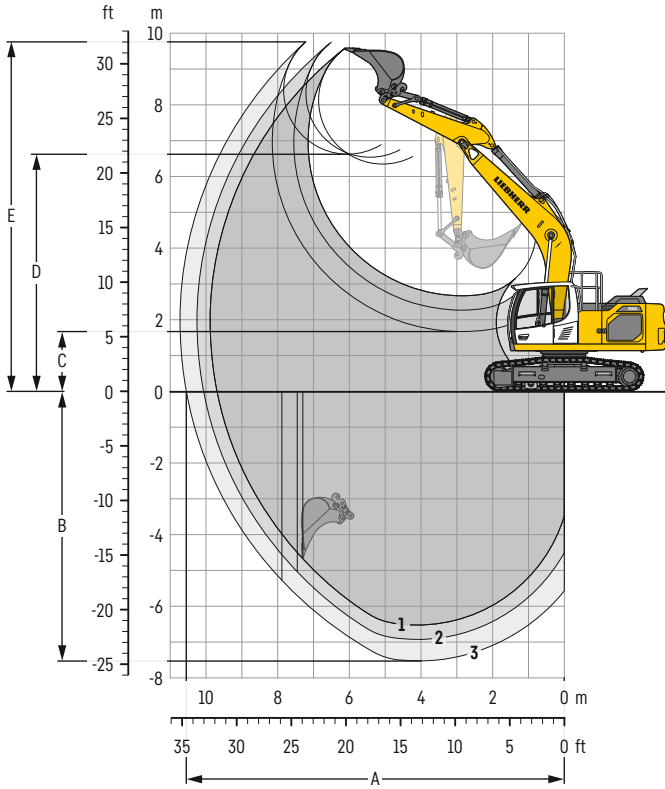
### removable elements disassembled

	Undercarriage	Mono boom 5.70 m						Mono boom straight 5.90 m						Two-piece boom 5.90 m						Mono boom offset 5.65 m					
		mm						mm						mm						mm					
Pad width		500	600	700	750	800	900	500	600	700	750	800	900	500	600	700	750	800	900	500	600	700	750	800	900
Transport width	NLC	2,555	2,555	2,700	2,750	-	-	2,555	2,555	2,700	2,750	-	-	2,555	2,555	2,700	2,750	-	-	2,555	2,555	2,700	2,750	-	-
	SLC	2,740	2,840	2,940	2,990	3,040	3,140	2,740	2,840	2,940	2,990	3,040	3,140	2,740	2,840	2,940	2,990	3,040	3,140	2,740	2,840	2,940	2,990	3,040	3,140
	LC	2,890	2,990	3,090	3,140	3,190	3,290	2,890	2,990	3,090	3,140	3,190	3,290	2,890	2,990	3,090	3,140	3,190	3,290	2,890	2,990	3,090	3,140	3,190	3,290

	Undercarriage / Stick m	NLC / SLC / LC						NLC / SLC / LC						NLC / SLC / LC						NLC / SLC / LC					
		mm						mm						mm						mm					
Transport length		9,700						9,950						9,900						9,550					
Transport height	2.50	3,060						3,060						3,060						3,060					
	2.90	3,100						3,060						3,060						3,060					
	3.50	3,060						3,060						3,060						3,060					

# Backhoe bucket

with mono boom 5.70 m



## Digging envelope

with quick coupler	1	2	3	
Stick length	m	2.50	2.90	3.50
A Max. reach at ground level	m	9.69	10.07	10.55
B Max. digging depth	m	6.53	6.93	7.52
C Min. dumping height	m	2.67	2.27	1.67
D Max. dumping height	m	6.34	6.54	6.62
E Max. cutting height	m	9.54	9.75	9.76

## Forces

without quick coupler	1	2	3	
Stick digging force (ISO 6015)	kN	125	113	99
Bucket digging force (ISO 6015)	kN	160	160	160
Stick digging force (SAE J1179)	kN	120	109	95
Bucket digging force (SAE J1179)	kN	140	140	140

## Operating weight and ground pressure

The operating weight includes the basic machine with counterweight 4.0t, mono boom 5.70 m, stick 2.90 m, quick coupler SWA 48 (250 kg) and bucket 1.15 m<sup>3</sup> (830 kg).

Undercarriage	NLC				
Pad width	mm	500	600	700	750
Weight	kg	22,250	22,500	22,750	22,850
Ground pressure	kg/cm <sup>2</sup>	0.57	0.48	0.41	0.39

Undercarriage	SLC						
Pad width	mm	500	600	700	750	800	900
Weight	kg	22,350	22,600	22,850	22,950	23,250	23,550
Ground pressure	kg/cm <sup>2</sup>	0.57	0.48	0.42	0.39	0.37	0.33

Undercarriage	LC						
Pad width	mm	500	600	700	750	800	900
Weight	kg	22,450	22,700	22,950	23,050	23,350	23,650
Ground pressure	kg/cm <sup>2</sup>	0.57	0.48	0.42	0.39	0.37	0.34



**Buckets** Machine stability per ISO 10567\* (75% of tipping capacity)

Cutting width mm	Capacity ISO 7451 m <sup>3</sup>	Weight <sup>3)</sup> kg	Weight <sup>4)</sup> kg	NLC undercarriage (with track pads 500 mm)						SLC undercarriage (with track pads 600 mm)						LC undercarriage (with track pads 600 mm)						
				Stick length (m)			Stick length (m)			Stick length (m)			Stick length (m)			Stick length (m)			Stick length (m)			
				without quick coupler			with quick coupler			without quick coupler			with quick coupler			without quick coupler			with quick coupler			
				2.50	2.90	3.50	2.50	2.90	3.50	2.50	2.90	3.50	2.50	2.90	3.50	2.50	2.90	3.50	2.50	2.90	3.50	
STD <sup>1)</sup>	650	0.55	580	590	▲	▲	▲	▲	▲	▲	▲	▲	▲	▲	▲	▲	▲	▲	▲	▲	▲	▲
	850	0.75	620	630	▲	▲	▲	▲	▲	▲	▲	▲	▲	▲	▲	▲	▲	▲	▲	▲	▲	▲
	1,050	0.95	700	710	▲	■	▲	■	▲	△	▲	▲	■	▲	▲	■	▲	▲	▲	▲	▲	▲
	1,250	1.15	810	830	▲	■	△	■	△	-	▲	▲	■	■	▲	△	▲	■	■	■	■	■
	1,250	1.25	890	910	■	△	-	△	△	-	▲	▲	■	▲	△	△	■	▲	■	■	▲	△
	1,400	1.35	850	880	△	△	-	△	-	-	▲	■	△	■	△	-	■	▲	△	▲	■	△
HD <sup>2)</sup>	1,400	1.50	950	980	△	-	-	-	-	-	△	△	-	△	△	-	■	△	△	■	△	-
	1,500	1.65	1,020	1,030	-	-	-	-	-	-	△	-	-	△	-	-	△	△	-	△	△	-
	650	0.55	640	650	▲	▲	▲	▲	▲	▲	▲	▲	▲	▲	▲	▲	▲	▲	▲	▲	▲	▲
	850	0.75	695	705	▲	▲	▲	▲	▲	■	▲	▲	▲	▲	▲	▲	▲	▲	▲	▲	▲	▲
	1,050	0.95	790	800	▲	■	■	■	▲	△	▲	▲	■	▲	▲	▲	▲	▲	▲	▲	▲	■
	1,250	1.15	910	940	■	△	△	△	△	-	■	▲	■	■	■	△	▲	■	■	■	▲	■
1,250	1.25	1,010	1,030	△	△	-	△	-	-	▲	■	△	■	△	△	■	▲	△	■	■	△	
1,400	1.35	970	990	△	-	-	△	-	-	■	△	△	■	△	-	▲	■	△	▲	△	△	
1,400	1.50	1,090	1,120	-	-	-	-	-	-	△	△	-	△	-	-	■	△	-	△	△	-	

\* Indicated loads are based on ISO 10567, at maximum reach, and may be swung 360° on firm and even ground

<sup>1)</sup> Standard bucket with teeth Z 40

<sup>2)</sup> HD bucket with teeth Z 40

<sup>3)</sup> Bucket for direct mounting

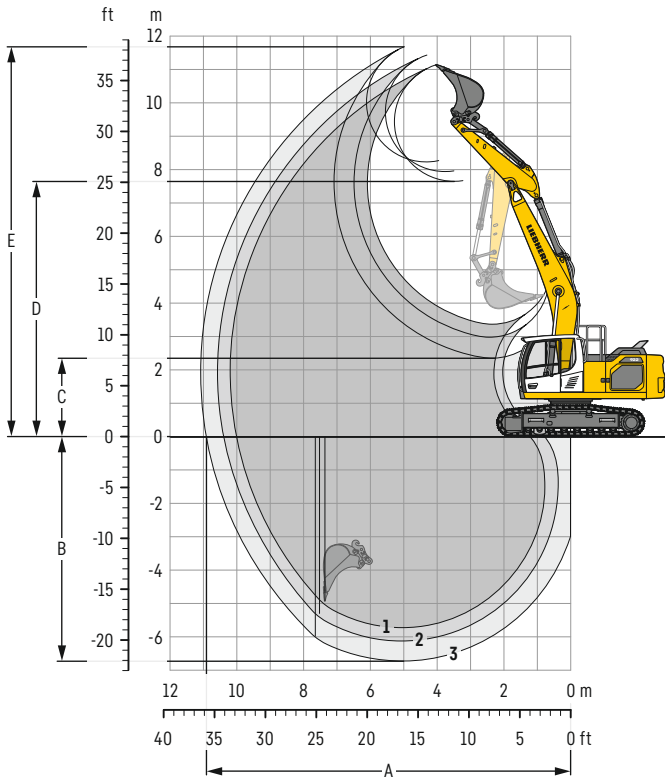
<sup>4)</sup> Bucket for mounting to quick coupler SWA 48 (250 kg)

Other buckets available upon request

Max. material weight ▲ = ≤ 2.0t/m<sup>3</sup>, ■ = ≤ 1.8t/m<sup>3</sup>, ▲ = ≤ 1.65t/m<sup>3</sup>, ■ = ≤ 1.5t/m<sup>3</sup>, △ = ≤ 1.2t/m<sup>3</sup>, - = not authorised

# Backhoe bucket

with mono boom straight 5.90 m



## Digging envelope

with quick coupler		1	2	3
Stick length	m	2.50	2.90	3.50
A Max. reach at ground level	m	10.01	10.40	10.91
B Max. digging depth	m	5.73	6.13	6.73
C Min. dumping height	m	3.37	2.98	2.35
D Max. dumping height	m	7.65	7.94	8.23
E Max. cutting height	m	11.14	11.43	11.63

## Forces

without quick coupler		1	2	3
Stick digging force (ISO 6015)	kN	125	113	99
Bucket digging force (ISO 6015)	kN	160	160	160
Stick digging force (SAE J1179)	kN	120	109	95
Bucket digging force (SAE J1179)	kN	140	140	140

## Operating weight and ground pressure

The operating weight includes the basic machine with counterweight 4.0t, mono boom straight 5.90 m, stick 2.90 m, quick coupler SWA 48 (250 kg) and bucket 1.15 m<sup>3</sup> (830 kg).

Undercarriage		NLC			
Pad width	mm	500	600	700	750
Weight	kg	22,250	22,500	22,750	22,850
Ground pressure	kg/cm <sup>2</sup>	0.57	0.48	0.41	0.39

Undercarriage		SLC					
Pad width	mm	500	600	700	750	800	900
Weight	kg	22,350	22,600	22,850	22,950	23,250	23,550
Ground pressure	kg/cm <sup>2</sup>	0.57	0.48	0.42	0.39	0.37	0.33

Undercarriage		LC					
Pad width	mm	500	600	700	750	800	900
Weight	kg	22,450	22,700	22,950	23,050	23,350	23,650
Ground pressure	kg/cm <sup>2</sup>	0.57	0.48	0.42	0.39	0.37	0.34

**Buckets** Machine stability per ISO 10567\* (75% of tipping capacity)

	Cutting width mm	Capacity ISO 7451 m <sup>3</sup>	Weight <sup>3)</sup> kg	Weight <sup>4)</sup> kg	NLC undercarriage (with track pads 500 mm)						SLC undercarriage (with track pads 600 mm)						LC undercarriage (with track pads 600 mm)					
					Stick length (m)						Stick length (m)						Stick length (m)					
					without quick coupler			with quick coupler			without quick coupler			with quick coupler			without quick coupler			with quick coupler		
					2.50	2.90	3.50	2.50	2.90	3.50	2.50	2.90	3.50	2.50	2.90	3.50	2.50	2.90	3.50	2.50	2.90	3.50
STD <sup>1)</sup>	650	0.55	580	590	▲	▲	▲	▲	▲	▲	▲	▲	▲	▲	▲	▲	▲	▲	▲	▲	▲	▲
	850	0.75	620	630	▲	▲	■	▲	▲	▲	▲	▲	▲	▲	▲	▲	▲	▲	▲	▲	▲	▲
	1,050	0.95	700	710	■	▲	△	▲	■	△	▲	▲	▲	▲	■	■	▲	▲	■	▲	▲	▲
	1,250	1.15	810	830	■	△	-	△	-	-	■	■	△	▲	△	△	■	▲	■	■	■	△
	1,250	1.25	890	910	△	-	-	△	-	-	■	△	△	△	△	-	▲	■	△	▲	△	△
	1,400	1.35	850	880	△	-	-	-	-	-	■	△	-	△	△	-	▲	△	△	■	△	-
HD <sup>2)</sup>	1,400	1.50	950	980	-	-	-	-	-	-	△	-	-	△	-	-	△	△	-	△	-	-
	1,500	1.65	1,020	1,030	-	-	-	-	-	-	-	-	-	-	-	-	△	-	-	△	-	-
	650	0.55	640	650	▲	▲	▲	▲	▲	▲	▲	▲	▲	▲	▲	▲	▲	▲	▲	▲	▲	▲
	850	0.75	695	705	▲	▲	■	▲	■	■	▲	▲	▲	▲	▲	▲	▲	▲	▲	▲	▲	▲
	1,050	0.95	790	800	■	■	△	▲	△	△	▲	■	■	▲	■	■	▲	▲	■	▲	▲	△
	1,250	1.15	910	940	△	△	-	△	-	-	▲	■	△	■	△	-	■	▲	△	▲	■	△
	1,250	1.25	1,010	1,030	△	-	-	-	-	-	■	△	-	△	△	-	▲	■	△	■	△	-
	1,400	1.35	970	990	-	-	-	-	-	-	△	△	-	△	-	-	■	△	△	△	△	-
	1,400	1.50	1,090	1,120	-	-	-	-	-	-	△	-	-	-	-	-	△	△	-	△	-	-

\* Indicated loads are based on ISO 10567, at maximum reach, and may be swung 360° on firm and even ground

<sup>1)</sup> Standard bucket with teeth Z 40

<sup>2)</sup> HD bucket with teeth Z 40

<sup>3)</sup> Bucket for direct mounting

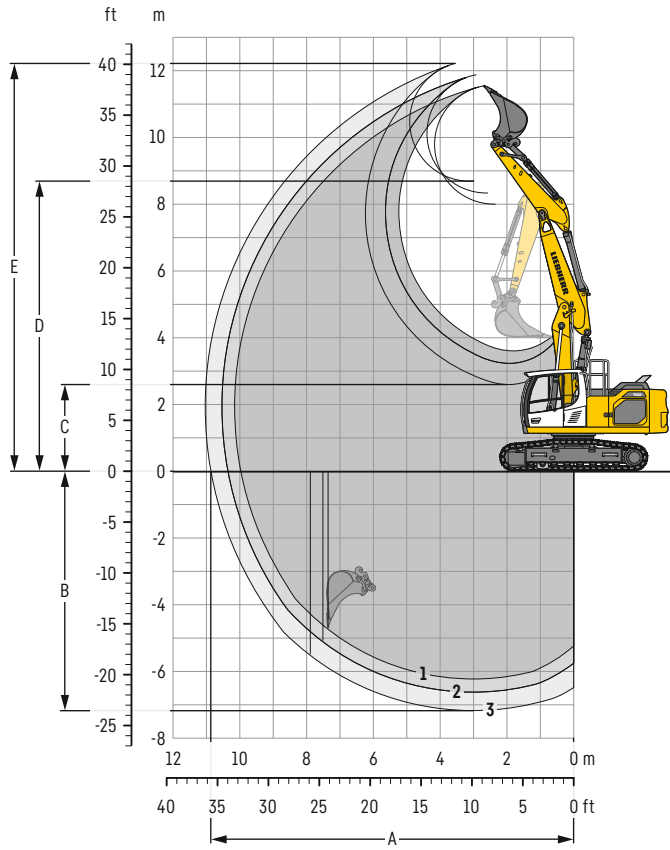
<sup>4)</sup> Bucket for mounting to quick coupler SWA 48 (250 kg)

Other buckets available upon request

Max. material weight ▲ = ≤ 2.0t/m<sup>3</sup>, ■ = ≤ 1.8t/m<sup>3</sup>, ▲ = ≤ 1.65t/m<sup>3</sup>, ■ = ≤ 1.5t/m<sup>3</sup>, △ = ≤ 1.2t/m<sup>3</sup>, - = not authorised

# Backhoe bucket

with two-piece boom 5.90 m



## Digging envelope

with quick coupler	1	2	3	
Stick length	m	2.50	2.90	3.50
A Max. reach at ground level	m	9.97	10.36	10.87
B Max. digging depth	m	6.23	6.62	7.17
C Min. dumping height	m	3.61	3.23	2.60
D Max. dumping height	m	8.00	8.33	8.69
E Max. cutting height	m	11.55	11.88	12.22

## Forces

without quick coupler	1	2	3	
Stick digging force (ISO 6015)	kN	125	113	99
Bucket digging force (ISO 6015)	kN	160	160	160
Stick digging force (SAE J1179)	kN	120	109	95
Bucket digging force (SAE J1179)	kN	140	140	140

## Operating weight and ground pressure

The operating weight includes the basic machine with counterweight 4.0t, two-piece boom 5.90 m, stick 2.90 m, quick coupler SWA 48 (250 kg) and bucket 1.15 m<sup>3</sup> (830 kg).

Undercarriage	NLC				
Pad width	mm	500	600	700	750
Weight	kg	22,950	23,200	23,450	23,550
Ground pressure	kg/cm <sup>2</sup>	0.59	0.49	0.43	0.40

Undercarriage	SLC						
Pad width	mm	500	600	700	750	800	900
Weight	kg	23,050	23,300	23,550	23,650	23,950	24,250
Ground pressure	kg/cm <sup>2</sup>	0.59	0.50	0.43	0.40	0.38	0.34

Undercarriage	LC						
Pad width	mm	500	600	700	750	800	900
Weight	kg	23,150	23,400	23,650	23,750	24,050	24,350
Ground pressure	kg/cm <sup>2</sup>	0.59	0.50	0.43	0.40	0.38	0.35

**Buckets** Machine stability per ISO 10567\* (75% of tipping capacity)

Cutting width mm	Capacity ISO 7451 m <sup>3</sup>	Weight <sup>3)</sup> kg	Weight <sup>4)</sup> kg	NLC undercarriage (with track pads 500 mm)						SLC undercarriage (with track pads 600 mm)						LC undercarriage (with track pads 600 mm)						
				Stick length (m)						Stick length (m)						Stick length (m)						
				without quick coupler			with quick coupler			without quick coupler			with quick coupler			without quick coupler			with quick coupler			
				2.50	2.90	3.50	2.50	2.90	3.50	2.50	2.90	3.50	2.50	2.90	3.50	2.50	2.90	3.50	2.50	2.90	3.50	
STD <sup>1)</sup>	650	0.55	580	590	▲	▲	▲	▲	▲	▲	▲	▲	▲	▲	▲	▲	▲	▲	▲	▲	▲	▲
	850	0.75	620	630	▲	▲	■	▲	■	▲	▲	▲	▲	▲	▲	▲	▲	▲	▲	▲	▲	▲
	1,050	0.95	700	710	■	▲	△	▲	△	△	▲	▲	▲	▲	■	■	▲	▲	■	▲	▲	▲
	1,250	1.15	810	830	△	△	-	△	-	-	▲	■	△	■	△	△	■	▲	■	■	■	△
	1,250	1.25	890	910	△	-	-	-	-	-	■	△	△	△	△	-	▲	■	△	■	△	△
	1,400	1.35	850	880	△	-	-	-	-	-	△	△	-	△	△	-	▲	△	△	■	△	-
HD <sup>2)</sup>	1,400	1.50	950	980	-	-	-	-	-	-	△	-	-	-	-	-	△	△	-	△	-	-
	1,500	1.65	1,020	1,030	-	-	-	-	-	-	-	-	-	-	-	-	△	-	-	-	-	-
	650	0.55	640	650	▲	▲	▲	▲	▲	▲	▲	▲	▲	▲	▲	▲	▲	▲	▲	▲	▲	▲
	850	0.75	695	705	▲	▲	▲	▲	■	■	▲	▲	▲	▲	▲	■	▲	▲	▲	▲	▲	▲
	1,050	0.95	790	800	▲	■	△	■	△	-	▲	■	▲	▲	▲	△	▲	▲	■	▲	■	△
	1,250	1.15	910	940	△	△	-	△	-	-	▲	■	△	■	△	-	■	▲	△	▲	■	△
	1,250	1.25	1,010	1,030	△	-	-	-	-	-	■	△	-	△	△	-	▲	△	△	■	△	-
	1,400	1.35	970	990	-	-	-	-	-	-	△	△	-	△	-	-	■	△	△	△	△	-
	1,400	1.50	1,090	1,120	-	-	-	-	-	-	△	-	-	-	-	-	△	△	-	△	-	-

\* Indicated loads are based on ISO 10567, at maximum reach, and may be swung 360° on firm and even ground

<sup>1)</sup> Standard bucket with teeth Z 40

<sup>2)</sup> HD bucket with teeth Z 40

<sup>3)</sup> Bucket for direct mounting

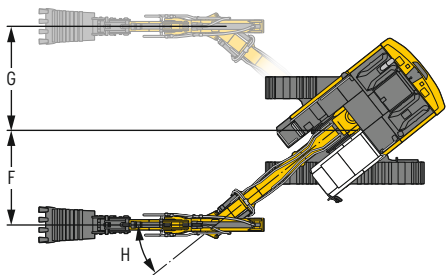
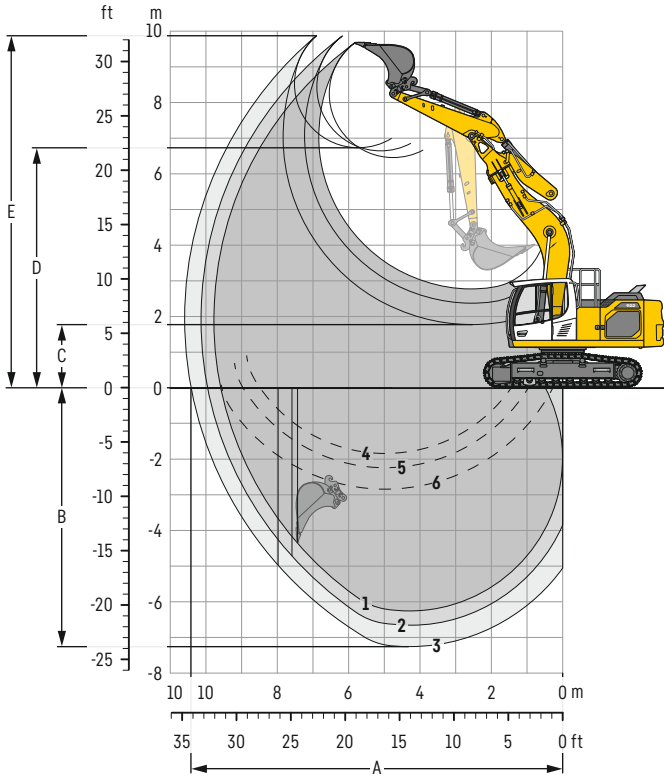
<sup>4)</sup> Bucket for mounting to quick coupler SWA 48 (250 kg)

Other buckets available upon request

Max. material weight ▲ = ≤ 2.0t/m<sup>3</sup>, ■ = ≤ 1.8t/m<sup>3</sup>, ▲ = ≤ 1.65t/m<sup>3</sup>, ■ = ≤ 1.5t/m<sup>3</sup>, △ = ≤ 1.2t/m<sup>3</sup>, - = not authorised

# Backhoe bucket

with mono boom offset 5.65 m



## Digging envelope

with quick coupler		1	2	3
Stick length	m	2.50	2.90	3.50
A Max. reach at ground level	m	9.58	9.95	10.42
B Max. digging depth	m	6.26	6.66	7.26
C Min. dumping height	m	2.77	2.37	1.77
D Max. dumping height	m	6.45	6.64	6.72
E Max. cutting height	m	9.66	9.85	9.87
F Max. offset right	m		2.92	
G Max. offset left	m		2.92	
H Max. offset angle	°		38.5	

1 with stick 2.50 m  
 2 with stick 2.90 m  
 3 with stick 3.50 m  
 with set straight boom

4 with stick 2.50 m  
 5 with stick 2.90 m  
 6 with stick 3.50 m  
 at max. equipment offset with vertical ditch walls

## Forces

without quick coupler		1	2	3
Stick digging force (ISO 6015)	kN	125	113	99
Bucket digging force (ISO 6015)	kN	160	160	160
Stick digging force (SAE J1179)	kN	120	109	95
Bucket digging force (SAE J1179)	kN	140	140	140

## Operating weight and ground pressure

The operating weight includes the basic machine with counterweight 4.0 t, mono boom offset 5.65 m, stick 2.90 m, quick coupler SWA 48 (250 kg) and bucket 1.15 m<sup>3</sup> (830 kg).

Undercarriage		NLC			
Pad width	mm	500	600	700	750
Weight	kg	23,150	23,400	23,650	23,750
Ground pressure	kg/cm <sup>2</sup>	0.59	0.50	0.43	0.40

Undercarriage		SLC					
Pad width	mm	500	600	700	750	800	900
Weight	kg	23,250	23,500	23,750	23,850	24,150	24,450
Ground pressure	kg/cm <sup>2</sup>	0.59	0.50	0.43	0.41	0.39	0.35

Undercarriage		LC					
Pad width	mm	500	600	700	750	800	900
Weight	kg	23,350	23,600	23,850	23,950	24,250	24,550
Ground pressure	kg/cm <sup>2</sup>	0.60	0.50	0.43	0.41	0.39	0.35

**Buckets** Machine stability per ISO 10567\* (75% of tipping capacity)

Cutting width mm	Capacity ISO 7451 m <sup>3</sup>	Weight <sup>3)</sup> kg	Weight <sup>4)</sup> kg	NLC undercarriage (with track pads 500 mm)						SLC undercarriage (with track pads 600 mm)						LC undercarriage (with track pads 600 mm)						
				Stick length (m)						Stick length (m)						Stick length (m)						
				without quick coupler			with quick coupler			without quick coupler			with quick coupler			without quick coupler			with quick coupler			
				2.50	2.90	3.50	2.50	2.90	3.50	2.50	2.90	3.50	2.50	2.90	3.50	2.50	2.90	3.50	2.50	2.90	3.50	
STD <sup>1)</sup>	650	0.55	580	590	▲	▲	▲	▲	▲	▲	▲	▲	▲	▲	▲	▲	▲	▲	▲	▲	▲	▲
	850	0.75	620	630	▲	▲	■	▲	■	▲	▲	▲	▲	▲	▲	▲	▲	▲	▲	▲	▲	▲
	1,050	0.95	700	710	■	▲	△	▲	■	△	▲	▲	△	▲	■	■	▲	▲	▲	▲	▲	■
	1,250	1.15	810	830	△	△	-	△	-	-	■	■	△	▲	△	△	▲	▲	■	■	▲	△
	1,250	1.25	890	910	△	-	-	-	-	-	■	△	△	■	△	-	▲	■	△	▲	△	△
	1,400	1.35	850	880	△	-	-	-	-	-	■	△	-	△	△	-	▲	■	△	■	△	△
HD <sup>2)</sup>	1,400	1.50	950	980	-	-	-	-	-	-	△	-	-	△	-	-	△	△	-	△	△	-
	1,500	1.65	1,020	1,030	-	-	-	-	-	-	-	-	-	-	-	-	△	-	-	△	-	-
	650	0.55	640	650	▲	▲	▲	▲	▲	▲	▲	▲	▲	▲	▲	▲	▲	▲	▲	▲	▲	▲
	850	0.75	695	705	▲	▲	■	▲	■	■	▲	▲	▲	▲	▲	▲	▲	▲	▲	▲	▲	▲
	1,050	0.95	790	800	■	■	△	▲	△	△	▲	■	▲	▲	■	■	▲	▲	■	▲	▲	▲
	1,250	1.15	910	940	△	△	-	△	-	-	▲	■	△	■	△	-	■	▲	■	■	■	△
1,250	1.25	1,010	1,030	△	-	-	-	-	-	■	△	-	△	△	-	▲	■	△	■	△	△	
1,400	1.35	970	990	-	-	-	-	-	-	△	△	-	△	-	-	■	△	△	■	△	-	
1,400	1.50	1,090	1,120	-	-	-	-	-	-	△	-	-	-	-	-	△	△	-	△	-	-	

\* Indicated loads are based on ISO 10567, at maximum reach, and may be swung 360° on firm and even ground

<sup>1)</sup> Standard bucket with teeth Z 40

<sup>2)</sup> HD bucket with teeth Z 40

<sup>3)</sup> Bucket for direct mounting

<sup>4)</sup> Bucket for mounting to quick coupler SWA 48 (250 kg)

Other buckets available upon request

Max. material weight ▲ = ≤ 2.0t/m<sup>3</sup>, ■ = ≤ 1.8t/m<sup>3</sup>, ▲ = ≤ 1.65t/m<sup>3</sup>, ■ = ≤ 1.5t/m<sup>3</sup>, △ = ≤ 1.2t/m<sup>3</sup>, - = not authorised

# Lift capacities

with mono boom 5.70 m, counterweight 4.0 t and track pads 500 mm / 600 mm

## Stick 2.50 m

Under-carriage m	3.0m		4.5m		6.0m		7.5m		9.0m		m
9.0											
7.5											
6.0											
4.5											
3.0											
1.5											
0											
-1.5	9.3	11.1*									
-3.0	9.5	15.4*									
-4.5											
9.0											
7.5											
6.0											
4.5											
3.0											
1.5											
0											
-1.5	11.0	11.1*									
-3.0	11.3	15.4*									
-4.5											
9.0											
7.5											
6.0											
4.5											
3.0											
1.5											
0											
-1.5	11.0	11.1*									
-3.0	11.3	15.4*									
-4.5											
9.0											
7.5											
6.0											
4.5											
3.0											
1.5											
0											
-1.5	11.0	11.1*									
-3.0	11.3	15.4*									
-4.5											

## Stick 2.90 m

Under-carriage m	3.0m		4.5m		6.0m		7.5m		9.0m		m
9.0											
7.5											
6.0											
4.5											
3.0											
1.5											
0											
-1.5	9.1	10.5*									
-3.0	9.3	16.3*									
-4.5	9.7	13.0*									
9.0											
7.5											
6.0											
4.5											
3.0											
1.5											
0											
-1.5	10.5*	10.5*									
-3.0	11.0	16.3*									
-4.5	11.4	13.0*									
9.0											
7.5											
6.0											
4.5											
3.0											
1.5											
0											
-1.5	10.5*	10.5*									
-3.0	11.0	16.3*									
-4.5	11.4	13.0*									
9.0											
7.5											
6.0											
4.5											
3.0											
1.5											
0											
-1.5	10.5*	10.5*									
-3.0	11.0	16.3*									
-4.5	11.4	13.0*									

## Stick 3.50 m

Under-carriage m	3.0m		4.5m		6.0m		7.5m		9.0m		m
9.0											
7.5											
6.0											
4.5											
3.0											
1.5											
0											
-1.5	8.8	10.4*									
-3.0	9.0	15.0*									
-4.5	9.3	14.7*									
9.0											
7.5											
6.0											
4.5											
3.0											
1.5											
0											
-1.5	10.4*	10.4*									
-3.0	10.7	15.0*									
-4.5	11.0	14.7*									
9.0											
7.5											
6.0											
4.5											
3.0											
1.5											
0											
-1.5	10.4*	10.4*									
-3.0	10.7	15.0*									
-4.5	11.0	14.7*									

Height Can be slewed through 360° In longitudinal position of undercarriage Max. reach \* Limited by hydr. capacity

The load values are quoted in tons (t) at stick end (without bucket), and may be swung 360° on firm and even ground. Adjacent values are valid for the undercarriage when in the longitudinal position. Capacities are valid for 600mm wide track pads. Indicated loads are based on ISO 10567 standard and do not exceed 75% of tipping or 87% of hydraulic capacity (indicated via \*). Without bucket cylinder, link and lever the lift capacities will increase by 320 kg. Lifting capacity of the excavator is limited by machine stability and hydraulic capacity.

According to European Standard, EN 474-5: In the European Union excavators have to be equipped with an overload warning device, a load diagram and automatic safety check valves on hoist cylinders and stick cylinder(s), when they are used for lifting operations which require the use of lifting accessories.

Determine maximum load lift from load lift chart displayed in the operator's cab or from load lift chart detailed in the operator's manual supplied with the machine.

<sup>1)</sup> Values are calculated with 500 mm wide track pads for the NLC-Undercarriage



# Lift capacities

with mono boom straight 5.90 m, counterweight 4.0 t and track pads 500 mm / 600 mm

## Stick 2.50 m

Under-carriage m	3.0m		4.5m		6.0m		7.5m		9.0m		m		
9.0											6.9	7.2*	4.4
7.5											3.9	5.9*	6.2
6.0											2.9	5.3	7.3
4.5											2.5	4.5	8.0
3.0											2.3	4.1	8.3
1.5											2.2	4.0	8.4
0											2.2	4.2	8.2
-1.5	8.3*	8.3*									2.5	4.6	7.7
-3.0											3.0	5.5*	6.8
-4.5													
9.0											7.2*	7.2*	4.4
7.5											4.4	5.9*	6.2
6.0											3.3	5.3	7.3
4.5											2.8	4.6	8.0
3.0											2.6	4.2	8.3
1.5											2.5	4.1	8.4
0											2.6	4.2	8.2
-1.5	8.3*	8.3*									2.8	4.6	7.7
-3.0											3.4	5.5*	6.8
-4.5													
9.0											7.2*	7.2*	4.4
7.5											4.4	5.9*	6.2
6.0											3.6	5.3	7.3
4.5											3.0	4.6	8.0
3.0											2.8	4.2	8.3
1.5											2.7	4.1	8.4
0											2.8	4.2	8.2
-1.5	8.3*	8.3*									3.0	4.7	7.7
-3.0											3.7	5.5*	6.8
-4.5													

## Stick 2.90 m

Under-carriage m	3.0m		4.5m		6.0m		7.5m		9.0m		m		
9.0											5.5	5.8*	5.1
7.5											3.4	4.9*	6.7
6.0											2.7	4.5*	7.8
4.5											2.3	4.1	8.4
3.0											2.1	3.8	8.7
1.5											2.0	3.7	8.8
0											2.0	3.8	8.6
-1.5	8.1*	8.1*									2.2	4.2	8.1
-3.0	9.3	12.4*									2.6	4.9	7.3
-4.5													
9.0											7.0*	7.0*	5.1
7.5											4.8	6.6*	6.7
6.0											3.2	5.1	7.8
4.5											2.6	4.2	8.4
3.0											2.4	3.9	8.7
1.5											2.3	3.8	8.8
0											2.4	3.9	8.6
-1.5	8.1*	8.1*									2.6	4.2	8.1
-3.0	11.0	12.4*									3.0	5.0	7.3
-4.5													
9.0											7.0*	7.0*	5.1
7.5											5.8*	5.8*	6.7
6.0											3.9	4.9*	7.8
4.5											3.0	4.5*	8.4
3.0											2.6	4.2	8.7
1.5											2.4	3.9	8.8
0											2.5	3.8	8.6
-1.5	8.1*	8.1*									2.6	4.2	8.1
-3.0	11.0	12.4*									3.0	5.0	7.3
-4.5													
9.0											7.0*	7.0*	5.1
7.5											5.1	6.6*	6.7
6.0											3.5	5.2	7.8
4.5											2.8	4.2	8.4
3.0											2.6	3.9	8.7
1.5											2.5	3.8	8.8
0											2.5	3.9	8.6
-1.5	8.1*	8.1*									2.8	4.3	8.1
-3.0	12.2	12.4*									3.3	5.0	7.3
-4.5													

## Stick 3.50 m

Under-carriage m	3.0m		4.5m		6.0m		7.5m		9.0m		m		
9.0											4.3*	4.3*	5.9
7.5											3.0	3.8*	7.4
6.0											2.4	3.5*	8.3
4.5											2.0	3.5*	8.9
3.0											1.9	3.5	9.2
1.5											1.8	3.4	9.3
0	5.0*	5.0*									1.8	3.5	9.1
-1.5	8.2*	8.2*									1.9	3.7	8.6
-3.0	8.9	12.8*									2.2	4.3	7.9
-4.5											2.9	4.7*	6.7
9.0											4.3*	4.3*	5.9
7.5											3.3	3.8*	7.4
6.0											2.7	3.5*	8.3
4.5											2.3	3.5*	8.9
3.0											2.1	3.5	9.2
1.5											2.1	3.4	9.3
0	5.0*	5.0*									2.1	3.5	9.1
-1.5	8.2*	8.2*									2.2	3.8	8.6
-3.0	10.7	12.8*									2.6	4.4	7.9
-4.5											3.4	4.7*	6.7
9.0											4.3*	4.3*	5.9
7.5											3.6	3.8*	7.4
6.0											2.9	3.5*	8.3
4.5											2.5	3.5*	8.9
3.0											2.3	3.5	9.2
1.5											2.3	3.5	9.3
0	5.0*	5.0*									2.3	3.5	9.1
-1.5	8.2*	8.2*									2.4	3.8	8.6
-3.0	11.8	12.8*									2.8	4.4	7.9
-4.5											3.6	4.7*	6.7

Height Can be slewed through 360° In longitudinal position of undercarriage Max. reach \* Limited by hydr. capacity

The load values are quoted in tons (t) at stick end (without bucket), and may be swung 360° on firm and even ground. Adjacent values are valid for the undercarriage when in the longitudinal position. Capacities are valid for 600mm wide track pads. Indicated loads are based on ISO 10567 standard and do not exceed 75% of tipping or 87% of hydraulic capacity (indicated via \*). Without bucket cylinder, link and lever the lift capacities will increase by 320 kg. Lifting capacity of the excavator is limited by machine stability and hydraulic capacity.

According to European Standard, EN 474-5: In the European Union excavators have to be equipped with an overload warning device, a load diagram and automatic safety check valves on hoist cylinders and stick cylinder(s), when they are used for lifting operations which require the use of lifting accessories.

Determine maximum load lift from load lift chart displayed in the operator's cab or from load lift chart detailed in the operator's manual supplied with the machine.

<sup>1)</sup> Values are calculated with 500 mm wide track pads for the NLC-Undercarriage

# Lift capacities

with two-piece boom 5.90 m, counterweight 4.0 t and track pads 500 mm / 600 mm

## Stick 2.50 m

Under-carriage m	3.0m		4.5m		6.0m		7.5m		9.0m		m
9.0									7.1*	7.1*	4.3
7.5									3.9	5.8*	6.2
6.0	7.4*	7.4*	6.9	8.6*	4.4	7.6			2.9	5.3	7.3
4.5	12.2	15.9*	6.7	10.7*	4.3	7.4	2.8	5.1	2.5	4.5	8.0
3.0	11.7	15.6*	6.4	11.2	4.1	7.3	2.7	5.0	2.2	4.2	8.3
1.5	10.0	16.4*	5.7	11.1	3.8	7.1	2.6	4.9	2.1	4.1	8.4
0	9.4	17.5*	5.3	10.8	3.6	6.8	2.5	4.8	2.2	4.2	8.1
-1.5	9.3	19.2*	5.1	10.6	3.4	6.6	2.5	4.7	2.4	4.6	7.6
-3.0	9.4	17.5*	5.1	10.6	3.4	6.6			3.0	4.5*	6.6
-4.5											
9.0			7.9	8.0*	4.7	6.6*			7.1*	7.1*	4.3
7.5			7.7	8.6*	4.9	7.6			4.5	5.8*	6.2
6.0	7.4*	7.4*	8.2	8.6*	5.3	7.7			3.6	5.4*	7.3
4.5	13.7	15.9*	7.5	10.7*	4.9	7.5	3.2	5.2	2.8	4.6	8.0
3.0	13.3	15.6*	7.2	11.3	4.6	7.4	3.1	5.1	2.6	4.2	8.3
1.5	11.8	16.4*	6.6	11.2	4.3	7.2	3.0	5.0	2.5	4.1	8.4
0	11.2	17.5*	6.1	11.0	4.1	6.9	2.9	4.8	2.5	4.2	8.1
-1.5	11.0	19.2*	5.9	10.7	3.9	6.7	2.8	4.7	2.8	4.7	7.6
-3.0	11.2	17.5*	5.9	10.7	3.9	6.7			3.4	4.5*	6.6
-4.5											
9.0			8.0*	8.0*	5.1	6.6*			7.1*	7.1*	4.3
7.5			8.2	8.6*	5.3	7.7			4.8	5.8*	6.2
6.0	7.4*	7.4*	8.0	10.7*	5.2	7.5	3.4	5.2	3.6	5.4*	7.3
4.5	14.8	15.9*	7.8	11.3	5.0	7.4	3.4	5.1	3.0	4.6	8.0
3.0	14.2	15.6*	7.8	11.3	5.0	7.4	3.4	5.1	2.8	4.2	8.3
1.5	13.1	16.4*	7.1	11.2	4.7	7.2	3.2	5.0	2.7	4.1	8.4
0	12.4	17.5*	6.6	11.0	4.4	6.9	3.1	4.8	2.7	4.2	8.1
-1.5	12.2	19.2*	6.4	10.8	4.3	6.8	3.1	4.8	3.0	4.7	7.6
-3.0	12.4	17.5*	6.4	10.8	4.2	6.7			3.7	4.5*	6.6
-4.5											

## Stick 2.90 m

Under-carriage m	3.0m		4.5m		6.0m		7.5m		9.0m		m		
9.0											5.7	5.8*	5.0
7.5											3.5	4.9*	6.7
6.0											2.7	4.5*	7.7
4.5	12.3	13.9*	6.7	9.8*	4.4	7.4	2.9	5.2	4.4	7.4	2.2	4.2	8.3
3.0	11.8	15.7*	6.5	11.2	4.2	7.3	2.8	5.1	4.2	7.3	2.0	3.9	8.7
1.5	10.3	16.8*	5.8	11.0	3.8	7.2	2.6	4.9	3.8	7.2	2.0	3.8	8.7
0	9.4	17.7*	5.3	10.9	3.6	6.8	2.5	4.8	3.6	6.8	2.0	3.9	8.5
-1.5	9.2	19.2*	5.0	10.5	3.4	6.7	2.4	4.6	3.4	6.7	2.2	4.2	8.0
-3.0	9.2	18.1*	5.0	10.5	3.3	6.5			3.3	6.5	2.6	4.1*	7.2
-4.5	9.6	13.6*	5.1	7.8*							4.5	6.3*	4.9
9.0			6.9*	6.9*							5.8*	5.8*	5.0
7.5			6.8*	6.8*	4.9	6.5*					3.9	4.9*	6.7
6.0			7.2*	7.2*	5.0	7.1*					3.0	4.5*	7.7
4.5	13.9	13.9*	7.5	9.8*	5.0	7.5	3.2	5.2	4.9	6.5*	2.6	4.2	8.3
3.0	13.2	15.7*	7.3	11.3	4.7	7.4	3.2	5.1	5.0	7.5	2.3	3.9	8.7
1.5	12.2	16.8*	6.6	11.1	4.4	7.2	3.0	5.0	4.7	7.4	2.3	3.8	8.7
0	11.2	17.7*	6.1	11.0	4.1	6.9	2.9	4.8	4.4	7.2	2.3	3.9	8.5
-1.5	10.9	19.2*	5.9	10.7	3.9	6.7	2.8	4.7	4.1	6.9	2.5	4.3	8.0
-3.0	11.0	18.1*	5.8	10.6	3.8	6.6			3.9	6.7	3.0	4.1*	7.2
-4.5	11.4	13.6*	5.9	7.8*					3.8	6.6	5.2	6.3*	4.9
9.0			6.9*	6.9*							5.8*	5.8*	5.0
7.5			6.8*	6.8*	5.2	6.5*					4.2	4.9*	6.7
6.0			7.2*	7.2*	5.3	7.1*	3.5	5.2			3.2	4.5*	7.7
4.5	13.9*	13.9*	8.0	9.8*	5.0	7.5	3.5	5.2	5.3	7.5	2.8	4.3	8.3
3.0	14.2	15.7*	7.8	11.3	5.0	7.4	3.4	5.2	5.0	7.4	2.5	3.9	8.7
1.5	13.4	16.8*	7.2	11.1	4.7	7.3	3.3	5.0	4.7	7.3	2.5	3.8	8.7
0	12.4	17.7*	6.6	11.0	4.4	6.9	3.1	4.8	4.4	6.9	2.5	3.9	8.5
-1.5	12.1	19.2*	6.4	10.7	4.2	6.8	3.0	4.7	4.4	6.9	2.7	4.3	8.0
-3.0	12.2	18.1*	6.3	10.7	4.1	6.6			4.2	6.8	3.2	4.1*	7.2
-4.5	12.6	13.6*	6.4	7.8*					4.1	6.6	5.6	6.3*	4.9

## Stick 3.50 m

Under-carriage m	3.0m		4.5m		6.0m		7.5m		9.0m		m		
9.0											4.3*	4.3*	5.8
7.5											3.0	3.7*	7.3
6.0											2.4	3.5*	8.3
4.5	6.7*	6.7*	6.8	7.3*	4.4	6.9*	3.0	5.2	2.0	3.5*	2.0	3.5*	8.9
3.0	11.8	16.6*	6.5	10.9*	4.2	7.3	2.9	5.1	1.9	3.7	1.8	3.5	9.2
1.5	10.9	16.4*	6.0	11.0	3.9	7.2	2.7	5.0	1.8	3.6	1.7	3.4	9.2
0	9.6	17.9*	5.4	10.9	3.6	6.9	2.5	4.8	1.8	3.5	1.8	3.5	9.0
-1.5	9.1	19.0*	5.0	10.5	3.4	6.6	2.3	4.6	1.9	3.7	1.9	3.7	8.6
-3.0	9.0	18.7*	4.9	10.4	3.2	6.4	2.3	4.6	2.2	4.3*	2.2	4.3*	7.8
-4.5	9.3	16.3*	4.9	10.0*	3.2	5.4*			3.1	4.7*	3.1	4.7*	6.2
9.0			5.7*	5.7*							4.3*	4.3*	5.8
7.5			5.4*	5.4*	5.0	5.4*					3.4	3.7*	7.3
6.0			5.5*	5.5*	5.1	5.8*	3.4	5.2*			2.7	3.5*	8.3
4.5	6.7*	6.7*	7.3*	7.3*	5.0	6.9*	3.4	5.3			2.3	3.5*	8.9
3.0	13.3	16.6*	7.3	10.9*	4.8	7.3	3.2	5.2	2.2	3.7	2.1	3.6	9.2
1.5	12.7	16.4*	6.8	11.0	4.4	7.2	3.1	5.0	2.1	3.6	2.0	3.5	9.2
0	11.4	17.9*	6.2	11.0	4.1	6.9	2.9	4.8	2.1	3.6	2.1	3.5	9.0
-1.5	10.9	19.0*	5.8	10.7	3.9	6.7	2.7	4.7	2.2	3.8	2.2	3.8	8.6
-3.0	10.8	18.7*	5.7	10.5	3.7	6.5	2.7	4.6	2.6	4.3*	2.6	4.3*	7.8
-4.5	11.1	16.3*	5.7	10.0*	3.8	5.4*			3.6	4.7*	3.6	4.7*	6.2
9.0			5.7*	5.7*							4.3*	4.3*	5.8
7.5			5.4*	5.4*	5.3	5.4*					3.6	3.7*	7.3
6.0			5.5*	5.5*	5.4	5.8*	3.6	5.2*			2.9	3.5*	8.3
4.5	6.7*	6.7*	7.3*	7.3*	5.3	6.9*	3.6	5.3			2.5	3.5*	8.9
3.0	14.3	16.6*	7.8	10.9*	5.1	7.3	3.5	5.2	2.4	3.7	2.3	3.6*	9.2
1.5	14.0	16.4*	7.4	11.1	4.8	7.2	3.3	5.1	2.3	3.6	2.2	3.5	9.2
0	12.6	17.9*	6.7	11.0	4.4	7.0	3.1	4.9	2.2	3.6	2.2	3.5	9.0
-1.5	12.1	19.0*	6.3	10.7	4.2	6.7	3.0	4.7	2.2	3.6	2.2	3.5	8.6
-3.0	12.0	18.7*	6.2	10.5	4.0	6.5	2.9	4.6	2.4	3.8	2.4	3.8	8.6
-4.5	12.3	16.3*	6.2	10.0*	4.1	5.4*			2.8	4.3*	2.8	4.3*	7.8
									3.9	4.7*	3.9	4.7*	6.2

Height Can be slewed through 360° In longitudinal position of undercarriage Max. reach \* Limited by hydr. capacity

The load values are quoted in tons (t) at stick end (without bucket), and may be swung 360° on firm and even ground. Adjacent values are valid for the undercarriage when in the longitudinal position. Capacities are valid for 600 mm wide track pads with adjusting cylinder in optimal position. Indicated loads are based on ISO 10567 standard and do not exceed 75% of tipping or 87% of hydraulic capacity (indicated via \*). Without bucket cylinder, link and lever the lift capacities will increase by 320 kg. Lifting capacity of the excavator is limited by machine stability and hydraulic capacity.

According to European Standard, EN 474-5: In the European Union excavators have to be equipped with an overload warning device, a load diagram and automatic safety check valves on hoist cylinders and stick cylinder(s), when they are used for lifting operations which require the use of lifting accessories.

Determine maximum load lift from load lift chart displayed in the operator's cab or from load lift chart detailed in the operator's manual supplied with the machine.

<sup>1)</sup> Values are calculated with 500 mm wide track pads for the NLC-Undercarriage

# Lift capacities

with mono boom offset 5.65 m, counterweight 4.0 t and track pads 500 mm / 600 mm

## Stick 2.50 m

Under-carriage m	3.0m		4.5m		6.0m		7.5m		9.0m		m		
9.0											4.6	5.7*	5.6
7.5											3.2	5.3*	6.8
6.0											2.5	4.8	7.5
4.5	11.2*	11.2*	6.1	8.0*	4.1	6.2*	2.6	4.9			2.2	4.3	7.9
3.0			5.3	9.9*	3.5	6.8	2.5	4.7			2.1	4.1	8.0
1.5			4.6	10.1	3.2	6.4	2.3	4.6			2.1	4.3	7.8
0	5.4*	5.4*	4.4	9.7	3.0	6.2	2.2	4.5			2.3	4.7	7.2
-1.5	8.2	12.1*	4.3	9.7	2.9	6.1					2.9	5.9	6.2
-3.0	8.5	13.5*	4.5	9.9	3.1	6.2							
-4.5													
9.0					4.6	6.2*					5.2	5.7*	5.6
7.5											3.6	5.3*	6.8
6.0											2.9	4.9	7.5
4.5	11.2*	11.2*	6.9	8.0*	4.4	6.7*	3.0	4.9			2.6	4.4	7.9
3.0			6.1	9.9*	4.0	6.9	2.8	4.8			2.4	4.2	8.0
1.5			5.4	10.2	3.7	6.5	2.7	4.6			2.5	4.3	7.8
0	5.4*	5.4*	5.2	9.8	3.5	6.2	2.6	4.5			2.7	4.8	7.2
-1.5	9.9	12.1*	5.1	9.8	3.4	6.2					3.4	6.0	6.2
-3.0	10.3	13.5*	5.3	10.0*	3.6	6.3							
-4.5													
9.0					4.9	6.2*					5.5	5.7*	5.6
7.5											3.9	5.3*	6.8
6.0											3.2	4.9	7.5
4.5	11.2*	11.2*	7.5	8.0*	4.7	6.7*	3.2	4.9			2.8	4.4	7.9
3.0			6.6	9.9*	4.4	6.9	3.1	4.8			2.7	4.2	8.0
1.5			6.0	10.2	4.0	6.5	2.9	4.6			2.7	4.2	8.0
0	5.4*	5.4*	5.7	9.9	3.8	6.3	2.8	4.5			3.0	4.8	7.2
-1.5	11.1	12.1*	5.6	9.8	3.8	6.2					3.7	6.0	6.2
-3.0	11.4	13.5*	5.8	10.0*	3.9	6.4							
-4.5													

## Stick 2.90 m

Under-carriage m	3.0m		4.5m		6.0m		7.5m		9.0m		m		
9.0											4.0	4.7*	6.1
7.5											2.9	4.5*	7.3
6.0											2.3	4.4	7.9
4.5			6.2	7.4*	3.9	6.3*	2.6	4.9			2.0	4.0	8.3
3.0			5.4	9.3*	3.5	6.8	2.5	4.7			1.9	3.8	8.3
1.5			4.7	10.2	3.2	6.4	2.3	4.5			1.9	3.9	8.1
0	6.6*	6.6*	4.3	9.7	2.9	6.1	2.2	4.4			2.1	4.3	7.6
-1.5	8.0	11.3*	4.2	9.6	2.8	6.0	2.1	4.4			2.6	5.2	6.7
-3.0	8.3	14.5*	4.3	9.7	2.9	6.1					3.8	6.5*	5.2
-4.5	8.8	10.7*	4.7	7.8*									
9.0					4.7	5.2*					4.5	4.7*	6.1
7.5											3.3	4.5*	7.3
6.0											2.7	4.5*	7.9
4.5			7.1	7.4*	4.4	6.3*	3.0	5.0			2.4	4.1	8.3
3.0			6.2	9.3*	4.1	6.9	2.8	4.8			2.2	3.9	8.3
1.5			5.5	10.3	3.7	6.5	2.7	4.6			2.3	4.0	8.1
0	6.6*	6.6*	5.1	9.8	3.5	6.2	2.5	4.5			2.5	4.4	7.6
-1.5	9.7	11.3*	5.0	9.7	3.4	6.1	2.5	4.4			3.0	5.3	6.7
-3.0	10.0	14.5*	5.1	9.8	3.4	6.2					4.5	6.5*	5.2
-4.5	10.6	10.7*	5.5	7.8*									
9.0					5.0	5.2*					4.7*	4.7*	6.1
7.5											3.5	4.5*	7.3
6.0											2.9	4.5*	7.9
4.5			7.4*	7.4*	4.8	6.3*	3.2	5.0			2.6	4.1	8.3
3.0			6.8	9.3*	4.4	6.9	3.1	4.8			2.4	3.9	8.3
1.5			6.0	10.3	4.0	6.5	2.9	4.6			2.5	4.0	8.1
0	6.6*	6.6*	5.6	9.8	3.8	6.2	2.8	4.5			2.7	4.4	7.6
-1.5	10.8	11.3*	5.5	9.7	3.7	6.1	2.7	4.4			3.3	5.3	6.7
-3.0	11.1	14.5*	5.6	9.9	3.7	6.2					4.9	6.5*	5.2
-4.5	10.7*	10.7*	6.0	7.8*									

## Stick 3.50 m

Under-carriage m	3.0m		4.5m		6.0m		7.5m		9.0m		m		
9.0											3.5	3.7*	6.7
7.5											2.6	3.5*	7.8
6.0					4.3	5.1*	2.8	4.2*			2.1	3.5*	8.4
4.5					4.0	5.7*	2.7	5.0			1.9	3.7*	8.7
3.0	10.5	12.8*	5.7	8.3*	3.6	6.6*	2.5	4.8			1.7	3.5	8.8
1.5	7.3*	7.3*	4.8	10.2*	3.2	6.5	2.3	4.6			1.7	3.6	8.6
0	7.7	8.0*	4.3	9.7	2.9	6.1	2.1	4.4			1.8	3.8	8.1
-1.5	7.7	11.1*	4.1	9.5	2.8	5.9	2.0	4.3			2.2	4.5	7.3
-3.0	7.9	15.7*	4.2	9.5	2.8	5.9					3.0	6.3	5.9
-4.5	8.4	12.6*	4.4	9.0*									
9.0					4.8	5.1*	3.2	4.2*			3.7*	3.7*	6.7
7.5											2.9	3.5*	7.8
6.0					4.6	5.7*	3.1	5.1			2.4	3.5*	8.4
4.5					4.2	6.6*	2.9	4.8			2.2	3.7*	8.7
3.0	12.3	12.8*	6.5	8.3*	3.7	6.6	2.7	4.6			2.0	3.6	8.8
1.5	7.3*	7.3*	5.7	10.2*	3.4	6.2	2.5	4.4			2.2	3.9	8.1
0	8.0*	8.0*	5.1	9.8	3.3	6.0	2.4	4.3			2.6	4.6	7.3
-1.5	9.4	11.1*	4.9	9.6	3.3	6.0					3.5	6.4	5.9
-3.0	9.6	15.7*	4.9	9.6	3.3	6.0							
-4.5	10.1	12.6*	5.2	9.0*									
9.0					5.1*	5.1*	3.4	4.2*			3.7*	3.7*	6.7
7.5					4.9	5.7*	3.3	5.1			3.2	3.5*	7.8
6.0					4.5	6.6*	3.1	4.9			2.6	3.5*	8.4
4.5					4.1	6.6	2.9	4.6			2.4	3.7*	8.7
3.0	12.8*	12.8*	7.1	8.3*	4.5	6.6*	3.1	4.9			2.2	3.6	8.8
1.5	7.3*	7.3*	6.2	10.2*	4.1	6.6	2.9	4.6			2.2	3.6	8.6
0	8.0*	8.0*	5.6	9.9	3.8	6.2	2.7	4.4			2.4	3.9	8.1
-1.5	10.5	11.1*	5.4	9.6	3.6	6.0	2.6	4.3			2.8	4.6	7.3
-3.0	10.7	15.7*	5.4	9.6	3.6	6.0					3.9	6.4	5.9
-4.5	11.3	12.6*	5.7	9.0*									

Height Can be slewed through 360° In longitudinal position of undercarriage Max. reach \* Limited by hydr. capacity

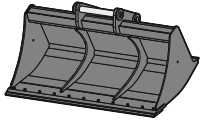
The load values are quoted in tons (t) at stick end (without bucket), and may be swung 360° on firm and even ground. Adjacent values are valid for the undercarriage when in the longitudinal position. Capacities are valid for 600mm wide track pads. Indicated loads are based on ISO 10567 standard and do not exceed 75% of tipping or 87% of hydraulic capacity (indicated via \*). Without bucket cylinder, link and lever the lift capacities will increase by 320 kg. Lifting capacity of the excavator is limited by machine stability and hydraulic capacity.

According to European Standard, EN 474-5: In the European Union excavators have to be equipped with an overload warning device, a load diagram and automatic safety check valves on hoist cylinders and stick cylinder(s), when they are used for lifting operations which require the use of lifting accessories.

Determine maximum load lift from load lift chart displayed in the operator's cab or from load lift chart detailed in the operator's manual supplied with the machine.

<sup>1)</sup> Values are calculated with 500 mm wide track pads for the NLC-Undercarriage

# Attachments



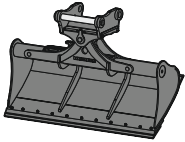
## Rigid ditch cleaning bucket

### GRL 04, for direct mounting

Cutting width	mm	1,500	2,000	2,010	2,400
Capacity	m <sup>3</sup>	0.50	0.70	0.85	0.85
Weight	kg	400	500	530	580

### GRL 04, for mounting to quick coupler SWA 48

Cutting width	mm	1,500	1,500	2,000	2,000	2,000	2,400	2,400
Capacity	m <sup>3</sup>	0.50	0.95	0.70	1.20	1.25	0.85	1.15
Weight	kg	430	560	400	640	600	600	650



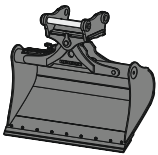
## Tiltable ditch cleaning bucket

### GRL 90, 2 x 50° tiltable, for direct mounting

Cutting width	mm	1,600	2,000	2,000	2,000	2,200	2,400	2,800
Capacity	m <sup>3</sup>	0.80	0.50	0.70	1.00	1.15	0.85	1.45
Weight	kg	798	686	819	883	920	885	1,009

### GRL 90, 2 x 50° tiltable, for mounting to quick coupler SWA 48

Cutting width	mm	1,600	2,000	2,000	2,000	2,200	2,200	2,200	2,400	2,400	2,800
Capacity	m <sup>3</sup>	0.80	0.50	0.70	1.00	0.80	1.15	1.40	0.85	1.25	1.85
Weight	kg	850	690	880	940	880	980	1,000	890	1,000	1,088



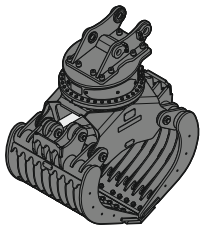
## Tilt bucket

### SL 90, 2 x 50° tiltable, for direct mounting

Cutting width	mm	1,600	1,600	1,600
Capacity	m <sup>3</sup>	0.80	1.00	1.35
Weight	kg	768	820	918

### SL 90, 2 x 50° tiltable, for mounting to quick coupler SWA 48

Cutting width	mm	1,500	1,600	1,600	1,600	1,600	1,600	1,600	1,600	1,600
Capacity	m <sup>3</sup>	1.20	0.80	1.00	1.35	1.55	0.80	1.00	1.35	1.55
Weight	kg	970	820	890	970	1,035	820	1,006	1,184	1,550
HD version							X	X	X	X



## Sorting grab

ribbed

perforated

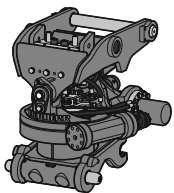
stone tong

### SG 30, for direct mounting

Cutting width	mm	1,000	1,150	1,000	1,150	1,020
Capacity	m <sup>3</sup>	0.75	0.90	0.85	1.00	0.85
Weight	kg	1,510	1,590	1,490	1,570	1,765

### SG 30, for mounting to quick coupler SWA 48

Cutting width	mm	1,000	1,150	1,000	1,150	1,020
Capacity	m <sup>3</sup>	0.75	0.90	0.85	1.00	0.85
Weight	kg	1,510	1,590	1,490	1,570	1,765



## Tiltrotator

### TR 25, for mounting to quick coupler SWA 48

Weight	kg	720
Rotation		360°
Tilt		2 x 50°

# Serial equipment



## Undercarriage

Lashing eyes  
Sprocket with dirt ejector  
Track and carrier rollers, sealed and lifetime-lubricated



## Uppercarriage

Access platforms without protruding parts  
Anti-skid surfaces  
Automatic swing brake lock  
Centralised lubrication system (automatic)  
DEF tank filling indicator  
DEF tank lockable access hatch  
Engine hood with gas spring opening  
Filters accessible from ground level  
Handrails  
Hydraulic oil level, visible from ground level  
Lockable service doors  
Lockable storage and accessories compartment  
Lockable storage box  
Main switch, accessible from ground level  
Main switch, electric, with timer  
Main switch, manual, lockable  
Positioning swing brake manual  
Protection grid on radiator fan  
Safe uppercarriage side access platform  
Sound insulation  
Swing-out radiators  
Windshield washer fluid tank, accessible from ground level



## Hydraulic system

Filter with integrated fine filters  
Hydraulic pressure measuring ports  
Liebherr Positive Control system with 2 independent circuits  
Magnetic rod  
Pressure accumulator for controlled lowering of equipment with engine turned off



## Engine

Air filter with automatic dust ejector  
Automatic engine idling / speed increase, controlled via joystick sensors  
Common-Rail injection system  
Engine oil dipstick  
Exhaust gas after-treatment system – DOC + SCR Filter  
Fixed geometry turbocharger  
Fuel fine filter  
Fuel pre-filter and water separator  
Fuel priming pump  
Intercooler  
Power Pack EU Stage V



## Cab

9" multifunction colour touchscreen  
Air conditioning, automatic, tri-zone, controlled via display  
Armrests adjustable in length, height and inclination  
Bottle holder  
Cab air filters housing, accessible from ground level  
Cab door sliding windows  
Cigarette lighter  
Coat hook  
DEF consumption on touchscreen  
DEF level on touchscreen  
Electric socket in cabin (12V)  
Electric socket in cabin (24V)  
Emergency hammer  
Engine coolant level, visible from the cab  
Engine oil level on touchscreen  
Fuel consumption on touchscreen  
Fuel level on touchscreen  
Hydraulic oil level on touchscreen  
Interior lighting  
Laminated right hand side window  
LiDAT Plus (Liebherr data transfer system)  
Mechanical hour meter, visible from ground level  
Mobile phone storage net  
Movement priority between swing and boom, adjustable via touchscreen  
Movement priority for stick-in, adjustable via touchscreen  
Operating modes  
Power modes  
Rain hood over front window opening  
Rearview mirror  
Rear view monitoring camera  
Rear window emergency exit  
Right hand side view monitoring camera  
Roll-down sun blinds for windscreen and roof window  
ROPS safety cab structure (ISO 12117-2)  
Rubber floor mat, fixed on floor and removable  
Shortcut buttons on joystick configurable  
Stepless adjustable engine speed  
Storage box  
Storage nets  
Storage spaces  
Swing braking torque adjustable via touchscreen  
Swing drive gearbox oil level, visible from the cab  
Tilttable console left  
Tinted windows  
Visco-elastic damping  
Windscreen wiper and washer



## Equipment

Anti-drift system boom cylinders  
Anti-drift system stick cylinder  
Boom cylinders regeneration  
Pipe fracture safety valve for stick cylinder  
Pipe fracture safety valves for boom cylinders  
Pivot points made of cast steel  
SAE split flanges on high pressure lines  
Stick cylinder regeneration

# Equipment standard / option

## Undercarriage

Chain guide 1 piece	●
Chain guide 3 pieces	+
Cover and base plate for undercarriage centre section	●
Reinforced cover and base plate for undercarriage centre section	+
Special painting	+
Steps	●
Steps wide	+
Track chains cleaner	+
Track pads triple grouser 500 / 700 / 750 / 800 / 900 mm	+
Track pads triple grouser 600 mm	●
Track pads triple grouser reinforced 500 / 600 / 700 / 750 mm	+
Tracks, sealed and greased	●
Tracks, sealed and greased, reinforced	+
Undercarriage LC	+
Undercarriage NLC	+
Undercarriage SLC	+
Undercarriage storage compartment	+

## Uppercarriage

Batteries high capacity	+
Batteries standard capacity	●
Boxing ring	+
Catwalk tiltable front left	+
Counterweight standard 4.0t	●
Electric socket on uppercarriage (24 V)	+
Extended tool set including tool box	+
External starting aid (24 V)	+
Front right rearview mirror	+1)
Fuel anti-theft protection	+
Headlight on uppercarriage, front left, LED+, 1 piece, protection included	+1)
Headlight on uppercarriage, front right, LED, 1 piece, protection included	●1)
Headlight on uppercarriage, front right, LED+, 1 piece, protection included	+1)
Headlight on uppercarriage, lateral left, LED+, 1 piece	+1)
Headlight on uppercarriage, lateral right, LED+, 1 piece	+1)
Headlights on uppercarriage, rear, LED+, 2 pieces	+1)
Lighting for tank area	+1)
Lighting for uppercarriage access	+1)
Lockable fuel tank cap	●
Lockable fuel tank cap with padlock	+
Reflective warning stickers	+
Rotating beacons on uppercarriage, rear, LED, 2 pieces	+
Skyview 360°	+
Special painting	+
Tank refilling pump fuel	+
Tool set including storage case	●
Uppercarriage bottom and side protection	+
Uppercarriage bottom closure sheets	●

## Hydraulic system

Bypass filter for hydraulic oil	+
Filter for hydraulic hammer return flow	+
High pressure circuit bypass	+
High pressure circuit flow summation	+
High pressure circuit switchable on pedals or mini-joystick	+
High pressure circuit with Tool Control (20 attachment adjustments on display)	+
Leak oil line for attachment	+
Liebherr hydraulic oil	●
Liebherr hydraulic oil, adapted for extreme climate conditions	+
Liebherr hydraulic oil, biodegradable	+
Medium pressure circuit	+

## Engine

Air pre-filter with cyclonical dust trap	+
Automatic engine shutdown after idling	+
Engine shut-down with overrun	+
Lighting for engine compartment	+1)
Pre-heating system for fuel	+
Radiator fine mesh protection grid	+
Reversible fan drive	+



## Cab

2" seat belt with retractor	●
3" seat belt with retractor, orange colour	+
4-points seat belt	+
Acoustic travel alarm deactivatable	+
Auxiliary heater programmable	+
Bottom windscreen wiper	+
Coming / Leaving Home	+ <sup>1)</sup>
Cool box (12V)	+
Dark tinted windows	+
Electrically adjustable and heated outside rear-view mirrors	+ <sup>1)</sup>
Electronic immobiliser	+
Emergency stop in cab	+
FGPS front guard	+
FGPS front guard tiltable	+
Fire extinguisher	+
First-aid box	+
Footrest	+
FOPS top guard	+
FOPS top guard flat	+
Handrests elevated for joysticks	+
Headlights on cab, front, LED, 2 pieces	● <sup>1)</sup>
Headlights on cab, front, LED+, 2 pieces	+ <sup>1)</sup>
Headlights on cab roof, front, LED+, 2 pieces	+ <sup>1)</sup>
Impact resistant one-piece windscreen	+
Impact resistant roof window	+
Independent travel	+ <sup>1)</sup>
Integral protection guard	+
Laminated roof window	●
Lightbar on cabin	+
Lighting for cabin access	+ <sup>1)</sup>
Luminosity control (LED+ headlights)	+ <sup>1)</sup>
Mini-joystick proportional	+
Movement restriction for boom	+
Movement restriction for stick	+
Operator seat Comfort	●
Operator seat Premium	+
Overload warning system	+
Personalised operator profile	+
Preparation for tiltrotator	+
Radio Comfort	+
Radio pre-installation	●
Remote cab lock	+ <sup>1)</sup>
Retractable laminated two-piece windscreen	●
Roof sun shield	+
Roof window wiper	+
Rotating beacon on cabin, LED, 1 piece	+
Seat belt reminder	+
Smart Key	+ <sup>1)</sup>
Special painting	+
Straight travel via mini-joystick	+ <sup>1)</sup>
Sun visor	+
Switch between high pressure and bucket cylinder controls	+
Travel speed management	+ <sup>1)</sup>
Windscreen bottom protection grid	+



## Equipment

Bucket cylinder rod protection	+
Centralised lubrication extended for connecting link	+
Floating boom	+
Grapple hydraulic lines (bucket cylinder inactive)	+
Headlight guard on boom, right	+
Headlight guards on boom, right and left	+
Headlight on boom, left, LED+, 1 piece	+ <sup>1)</sup>
Headlight on boom, right, LED, 1 piece	● <sup>1)</sup>
Headlight on boom, right, LED+, 1 piece	+ <sup>1)</sup>
Headlight on stick, bottom, LED+, 1 piece	+ <sup>1)</sup>
Hose protection for Solidlink	+
Liebherr bucket range	+
Liebherr tooth system	+
Load holding valve for bucket cylinder	+
Lubrication hoses protection on stick	+
Mono boom 5.70m	+
Mono boom offset 5.65m	+
Mono boom straight 5.90m	+
Quick coupler SWA 48 hydraulic	+
Quick coupler SWA 48 mechanical	+
Solidlink electric signal plug	+
Solidlink for quick coupler SWA 48 hydraulic	+
Special painting	+
Stick 2.50m	+
Stick 2.90m	+
Stick 3.50m	+
Stick bottom protection	+
Tool Management	+
Two-piece boom 5.90m	+



## Assistance system

Machine guidance system Leica 2D passive – "3D ready"	+
Machine guidance system Leica 2D semi-automatic – "3D ready"	+
Machine guidance system Leica 3D passive	+
Machine guidance system Leica 3D semi-automatic	+
Preparation for machine guidance system	+
Preparation for weighing system	+

● = Standard, + = Option

<sup>1)</sup> Equipment not individually available, but only as predefined packages

Non-exhaustive list, please contact us for further information.

Options and /or special equipment, supplied by vendors other than Liebherr, are only to be installed with the knowledge and approval of Liebherr in order to retain warranty.

# The Liebherr Group



## Global and independent: more than 70 years of success

Liebherr was founded in 1949 when, with the development of the world's first mobile tower crane, Hans Liebherr laid the foundations for a family business now employing nearly 51,000 people and comprising over 140 companies across every continent.

The parent company is Liebherr-International AG in Bulle, Switzerland, whose associates are exclusively members of the Liebherr family.

## Leaders and pioneers

Liebherr is a pioneer and its forward-looking approach has seen it make important contributions to technology history over a wide variety of industries. Employees throughout the world continue to share the courage of the founder, sharing a passion to produce innovative products and a determination to provide world-leading equipment and machinery.

## Diversified portfolio

The company is one of the world's biggest construction equipment manufacturers and provides high-quality, user-oriented products and services to sectors including: earthmoving, material handling, deep foundations, mining, mobile and crawler cranes, tower cranes, concrete production and distribution, maritime cranes, aerospace and transportation, gear technology and automation, refrigeration and freezing, components and hotels.

## Customised care

Liebherr solutions are characterised by precision, implementation and longevity. The company is committed to technological excellence and to providing customers with solutions that match their needs exactly. That customer focus does not end with delivery of a product but continues through a comprehensive range of back-up and support services.

[www.liebherr.com](http://www.liebherr.com)

## Liebherr-France SAS

2 avenue Joseph Rey, B.P. 90287 • 68005 Colmar Cedex, France • Phone +33 389 213030  
info.lfr@liebherr.com • [www.liebherr.com](http://www.liebherr.com) • [www.facebook.com/LiebherrConstruction](https://www.facebook.com/LiebherrConstruction)