

---

# R 940 Litronic

---

## LIEBHERR

Demolition excavator

### Engine

268 HP / 200 kW  
Tier 4 Final

### Operating weight

63,900 kg / 140,880 lb

### Working height

23 m / 75'6"  
H/2: 20 m / 65'7"



# Technical data



## Engine

<b>Rating</b>	
per SAE J1349	268 HP (200 kW) at 1,800 rpm
per ISO 9249	272 HP (200 kW) at 1,800 rpm
<b>Torque</b>	1,400 Nm at 1,100 rpm / <b>1,033 lbf ft at 1,000 rpm</b>
<b>Model</b>	Liebherr D944 A7-24
<b>Type</b>	4 cylinder in-line
Bore	130 mm / <b>5.1 in</b>
Stroke	150 mm / <b>5.9 in</b>
Displacement	7,964 l / <b>486 in<sup>3</sup></b>
<b>Engine operation</b>	4-stroke diesel Common-Rail, monoturbo
<b>Exhaust gas treatment</b>	Tier 4 Final DOC + SCR Filter Passive regeneration by thermo management
<b>Cooling system</b>	Water-cooled and integrated motor oil cooler, after-cooled and fuel cooled
<b>Air cleaner</b>	Dry-type air cleaner with pre-cleaner, primary and safety elements
<b>Fuel tank</b>	770 l / <b>203 gal</b>
<b>Urea tank</b>	90 l / <b>24 gal</b>
<b>Electrical system</b>	
Voltage	24 V
Batteries	2 x 180 Ah / 12 V
Starter	24 V / 7.8 kW
Alternator	Three-phase current 28 V / 140 A
Engine idling	Sensor controlled
<b>Motor management</b>	Connection to the integrated excavator system controlling via CAN-BUS to the economical utilisation of the service that is available



## Hydraulic controls

<b>Power distribution</b>	Via control valves in single block with integrated safety valves
Flow summation	To boom and stick
Closed-loop circuit	For uppercarriage swing drive
<b>Servo circuit</b>	
Equipment and swing	Proportional via joystick levers
Travel	- Proportional control via foot pedals or removable levers - Speed pre-selection
<b>Additional functions</b>	Proportional regulation via foot pedals or mini-joystick



## Hydraulic system

<b>Hydraulic system</b>	Positive Control hydraulic system. Demand-based, double independent pump flows Features high system dynamics and sensitivity provided by integrated system controlling Independent circuit for rotation
<b>Hydraulic pumps</b>	
For equipment and travel drive	Liebherr, variable displacement, swashplate double pump
Max. flow	2 x 315 l/min. / <b>2 x 83 gpm</b>
Max. pressure	380 bar / <b>5,511 psi</b>
For swing drive	Reversible, variable displacement, swashplate pump, closed-loop circuit
Max. flow	205 l/min. / <b>54 gpm</b>
Max. pressure	400 bar / <b>5,802 psi</b>
<b>Pump management</b>	Electronic pump management via the integrated system controlling (CAN-BUS) synchronous to the control block
<b>Hydraulic tank</b>	380 l / <b>100 gal</b>
<b>Hydraulic system</b>	1,100 l / <b>85 gal</b> with demolition equipment
<b>Hydraulic oil filter</b>	1 full flow filter (10 µm / <b>1,250 mesh</b> ) in return line with integrated fine filter area (5 µm / <b>2,500 mesh</b> )
<b>Cooling system</b>	Compact cooler, consisting of a water cooler, with hydraulic oil cooler, gearbox oil cooler, fuel cooler and after-cooler cores and hydrostatically driven fan
<b>MODE selection</b>	Adjustment of engine and hydraulic performance via a mode pre-selector to match application, e.g. for especially economical and environmentally friendly operation or for maximum digging performance and heavy-duty jobs
<b>RPM adjustment</b>	Stepless adjustment of engine output via RPM at each selected mode
<b>Tool Control</b>	20 pre-adjustable pump flows and pressures for add-on attachments
<b>Attachment system</b>	
Flow	315 l/min. / <b>83 gpm</b>
Pressure	380 bar / <b>5,511 psi</b>
<b>Attachment rotation system</b>	
Flow	30 l/min. / <b>8 gpm</b>
Pressure	140 bar / <b>2,031 psi</b>
Max. pressure	180 bar / <b>2,611 psi</b>



## Swing drive

<b>Drive</b>	Liebherr swashplate motor with integrated brake valve
<b>Transmission</b>	Liebherr compact planetary reduction gears
<b>Swing ring</b>	Liebherr, sealed race ball bearing swing ring, internal teeth
<b>Swing speed</b>	0 - 7.5 rpm stepless
<b>Swing torque</b>	115.2 kNm / <b>84,967 lbf ft</b>
<b>Holding brake</b>	Wet multi-disc (spring applied, pressure released)



## Cab

<b>Cab</b>	Safety cab structure, headlight integrated under the protection, a door with a sliding window (can be opened on both sides), large storing box and several stowing possibilities, shock-absorbing suspension, sound damping insulating, tinted laminated safety glass, separate window shades for the sunroof window and wind-screen, cigarette lighter and 12 V plug, storage bins, lunchbox, cup holder, polycarbonate windows on right side
<b>Operator's seat</b>	Liebherr-Comfort seat, airsprung with automatic weight adjustment, vertical and longitudinal seat damping including consoles and joysticks. Seat and armrests adjustable separately and in combination, seat heating as standard
<b>Arm consoles</b>	Oscillating consoles with seat, tiltable console left
<b>Operation and displays</b>	Large high-resolution color display with intuitive operation via touchscreen, video, additional color display for front and side camera, versatile adjusting, control and monitoring facilities, e.g. climate control, implement and attachment parameters, specific demolition display
<b>Air-conditioning</b>	Standard automatic air-conditioning, ambient air function, fast de-icing and demisting at the press of a button, air vents can be operated via a menu. Ambient air and fresh air filters can be easily replaced and are accessible from the outside. Heating-cooling unit, designed for extreme outside temperatures, sensors for solar radiation, inside and outside temperatures
<b>Noise emission</b>	
ISO 6396	71 dB(A) = $L_{pA}$ (inside cab)
2000/14/EC	105 dB(A) = $L_{WA}$ (surround noise)



## Undercarriage

<b>Versions</b>	
VH-HD	Hydraulic variable gauge
LC-V	Mechanical variable gauge
LC/NLC	Standard
<b>Drive</b>	Liebherr swashplate motor with integrated brake valve
<b>Transmission</b>	Liebherr compact planetary reduction gear
<b>Maximum travel speed</b>	2.2 km/h / <b>1.4 mph</b> low range 3.1 km/h / <b>1.9 mph</b> high range
<b>Drawbar pull on crawler</b>	400 kN / <b>89,924 lbf</b> (VH-HD) 347 kN / <b>78,009 lbf</b> (LC-V) 296 kN / <b>66,544 lbf</b> (LC/NLC)
<b>Track components</b>	D7, D7G, maintenance-free
<b>Track rollers / Carrier rollers</b>	10/3 (VH-HD) 10/3 (LC-V) 9/2 (LC/NLC)
<b>Tracks</b>	Sealed and greased
<b>Track pads</b>	Triple grouser
<b>Holding brake</b>	Wet multi-disc (spring applied, pressure released)

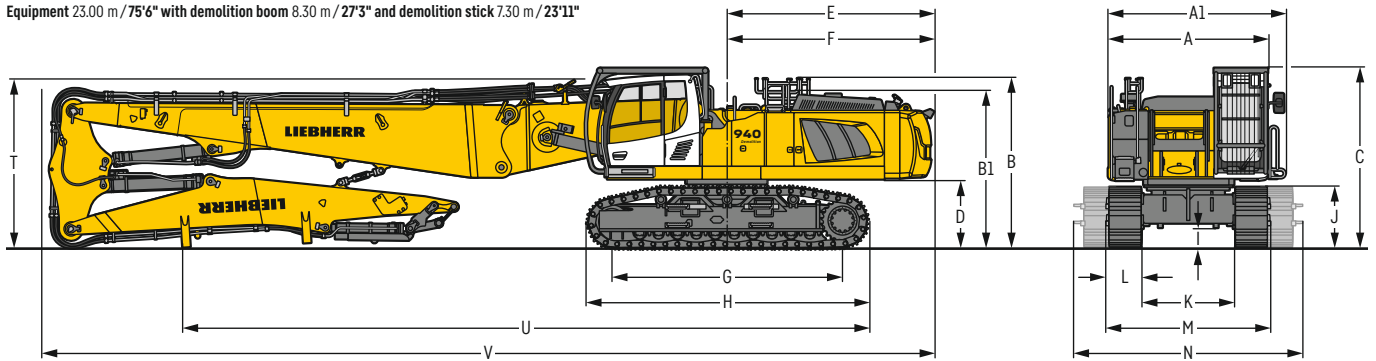


## Equipment

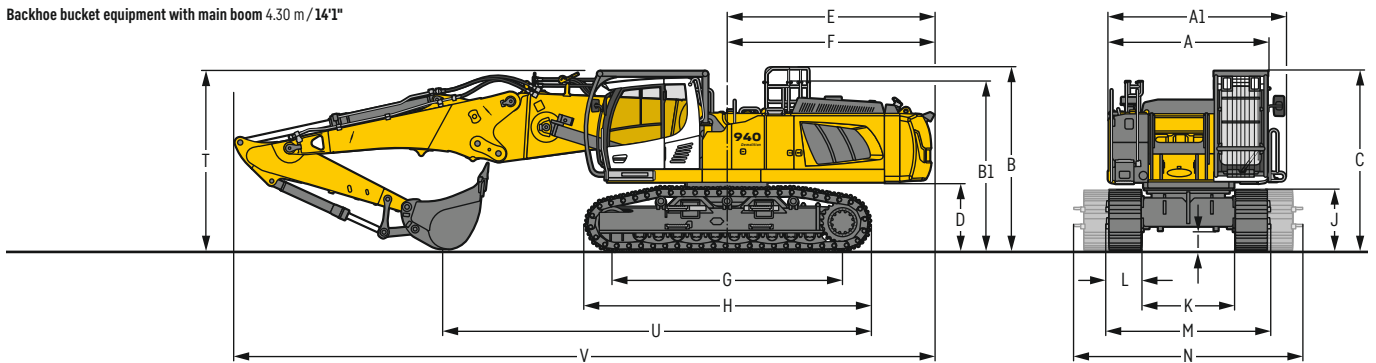
<b>Type</b>	Combination of resistant steel plates and cast steel components
<b>Hydraulic cylinders</b>	Liebherr cylinders with seal and guidance systems
<b>Bearings</b>	Sealed, low maintenance
<b>Lubrication</b>	Automatic central lubrication system (except link and tilt geometry)
<b>Hydraulic connections</b>	Pipes and hoses equipped with SAE split-flange connections
<b>Buckets</b>	Standard equipped with Liebherr tooth system

# Dimensions

Equipment 23.00 m / 75'6" with demolition boom 8.30 m / 27'3" and demolition stick 7.30 m / 23'11"



Backhoe bucket equipment with main boom 4.30 m / 14'1"



		VH-HD	mm / ft in	LC-V	mm / ft in	LC	mm / ft in	NLC	mm / ft in
A	Uppercarriage width		2,985 <sup>2)</sup> / 9'10" <sup>2)</sup>		2,985 <sup>2)</sup> / 9'10" <sup>2)</sup>		2,985 <sup>2)</sup> / 9'10" <sup>2)</sup>		2,985 <sup>2)</sup> / 9'10" <sup>2)</sup>
A1	Uppercarriage width with catwalks		3,325 / 10'11"		3,325 / 10'11"		3,325 / 10'11"		3,325 / 10'11"
B	Uppercarriage height		3,450 / 11' 4"		3,560 / 11' 8"		3,405 / 11' 2"		3,405 / 11' 2"
B1	Uppercarriage height (handrails folded)		3,190 / 10' 6"		3,300 / 10'10"		3,145 / 10' 4"		3,145 / 10' 4"
C	Cab height		3,400 / 11' 2"		3,510 / 11' 6"		3,355 / 11'		3,355 / 11'
D	Counterweight ground clearance		1,250 / 4' 1"		1,360 / 4' 6"		1,205 / 3'11"		1,205 / 3'11"
E	Rear-end length		3,945 / 12'11"		3,945 / 12'11"		3,945 / 12'11"		3,945 / 12'11"
F	Tail swing radius		3,945 / 12'11"		3,945 / 12'11"		3,945 / 12'11"		3,945 / 12'11"
G	Wheelbase		4,390 / 14' 5"		4,400 / 14' 5"		4,108 / 13' 6"		4,108 / 13' 6"
H	Undercarriage length		5,370 / 17' 7"		5,365 / 17' 7"		5,030 / 16' 6"		5,030 / 16' 6"
I	Undercarriage ground clearance		440 / 1' 5"		760 / 2' 6"		535 / 1' 9"		535 / 1' 9"
J	Track height		1,140 / 3' 9"		1,165 / 3'10"		1,070 / 3' 6"		1,070 / 3' 6"
K	Track gauge	2,380 - 3,300 <sup>3)</sup>	7'10" - 10'10" <sup>3)</sup>	2,390 - 2,890 <sup>3)</sup>	7'10" - 9' 6" <sup>3)</sup>		2,590 / 8' 6"		2,390 / 7'10"
L	Track pad width		600 / 24"		600 / 24"		600 / 24"		600 / 24"
M	Width over tracks	2,980 - 3,930 <sup>3)</sup>	9' 9" - 12'11" <sup>3)</sup>	2,990 - 3,490 <sup>3)</sup>	9'10" - 11' 5" <sup>3)</sup>		3,190 / 10' 6"		2,990 / 9'10"
N	Width over steps	3,090 - 4,310 <sup>3)</sup>	10' 2" - 14' 2" <sup>3)</sup>	3,240 - 3,740 <sup>3)</sup>	10' 8" - 12' 3" <sup>3)</sup>		3,180 / 10' 5"		2,980 / 9' 9"

<sup>1)</sup> width with removable steps

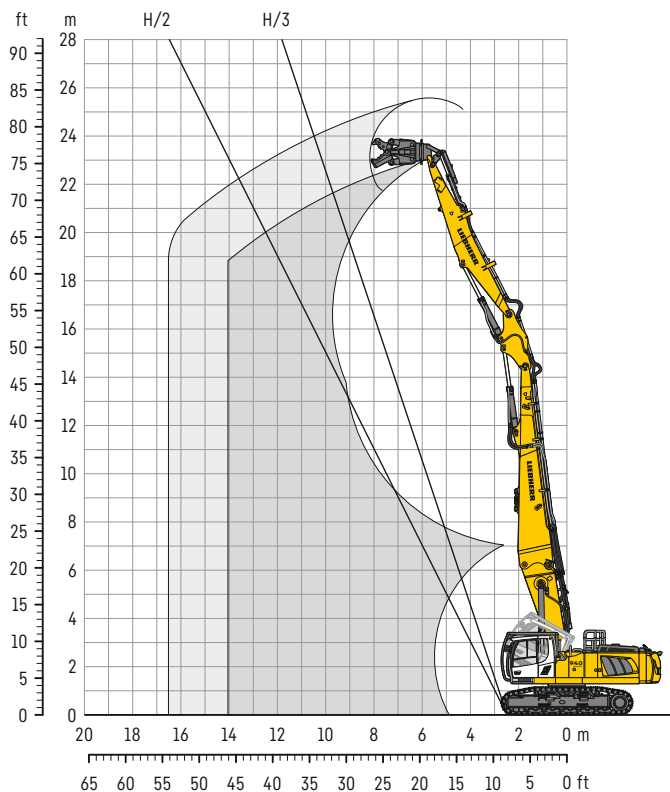
<sup>2)</sup> without door stop device and spacer

<sup>3)</sup> work position

		Demolition equipment 23.00 m / 75' 6"			
		VH-HD	LC-V	LC	NLC
		mm / ft in			
T	Boom height	3,200 / 20' 6"	3,300 / 10'10"	3,150 / 10' 4"	3,150 / 10' 4"
U	Length on ground	13,100 / 43'	13,050 / 42'10"	12,900 / 42' 4"	12,900 / 42' 4"
V	Overall length	16,950 / 55'7"	16,950 / 55' 7"	16,950 / 55'7"	16,950 / 55'7"

		Stick length	Backhoe bucket equipment			
		m / ft in	VH-HD	LC-V	LC	NLC
		mm / ft in				
T	Boom height	2.50 / 8'2"	3,400 / 11'2"	3,450 / 11' 4"	3,400 / 11' 2"	3,400 / 11' 2"
		2.80 / 9'2"	3,450 / 11' 4"	3,500 / 11' 6"	3,450 / 11' 4"	3,450 / 11' 4"
U	Length on ground	2.50 / 8'2"	8,150 / 26' 9"	8,000 / 26' 3"	7,800 / 25' 7"	7,800 / 25' 7"
		2.80 / 9'2"	7,950 / 26' 1"	7,800 / 25' 7"	7,600 / 24' 11"	7,600 / 24' 11"
V	Overall length	2.50 / 8'2"	13,400 / 44'	13,400 / 44'	13,400 / 44'	13,400 / 44'
		2.80 / 9'2"	13,400 / 44'	13,400 / 44'	13,400 / 44'	13,400 / 44'

# Demolition equipment 23.00 m / 75'6"



## Reach limitation

		10 m	12 m	14 m
Demolition boom 8.30 m / 27'3"		32'10"	39'4"	45'11"
+ Intermediate boom		Attachment weight*		
+ Demolition stick 7.30 m / 23'11"		t / lb		
VH-HD undercarriage	lengthwise	3.00 / 6,610	3.00 / 6,610	3.00 / 6,610
	transverse	3.00 / 6,610	2.75 / 6,060	2.50 / 5,510
LC-V undercarriage	lengthwise	3.00 / 6,610	3.00 / 6,610	2.75 / 6,060
	transverse	3.00 / 6,610	2.25 / 4,960	1.75 / 3,860
LC undercarriage	lengthwise	3.00 / 6,610	3.00 / 6,610	2.75 / 6,060
	transverse	2.00 / 4,410	1.75 / 3,860	-
NLC undercarriage	lengthwise	3.00 / 6,610	3.00 / 6,610	2.50 / 5,510
	transverse	1.50 / 3,310	1.25 / 2,760	-

\* included quick coupler, adapter plate and attachment

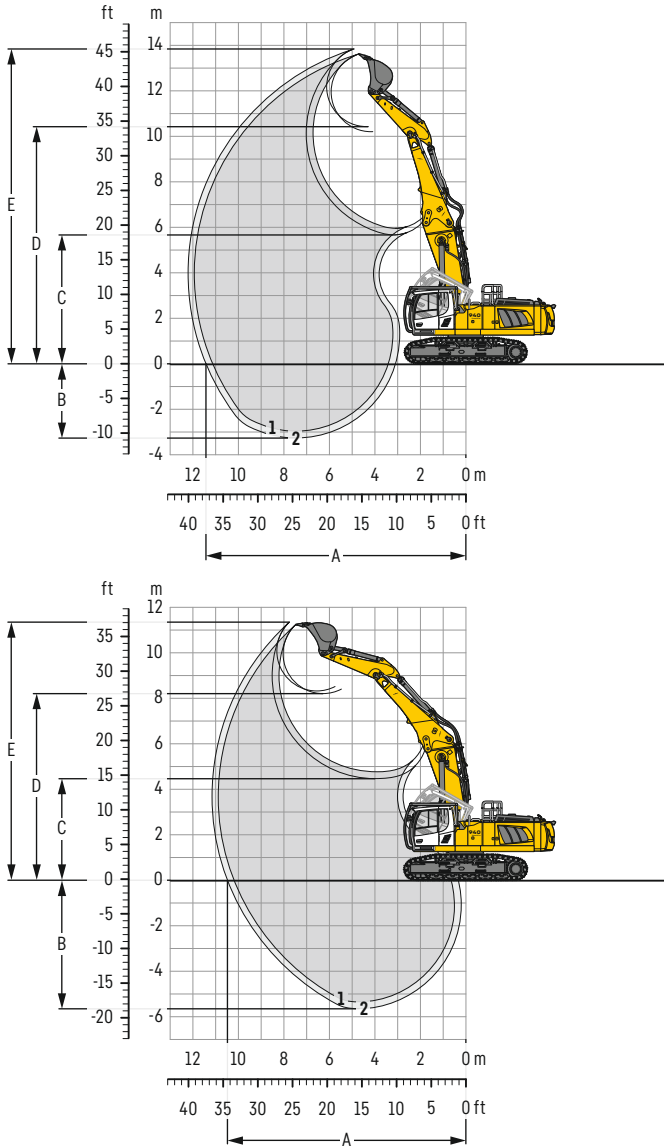
## Operating weight and ground pressure

The operating weight includes the basic machine with counterweight 11.0 t / 24,250 lb, demolition boom 8.30 m / 27'3", intermediate boom 2.25 m / 7'5", demolition stick 7.30 m / 23'11" and attachment 3.0 t / 6,610 lb.

Undercarriage		VH-HD	LC-V	LC	NLC
Pad width	mm / in	600 / 24"	600 / 24"	600 / 24"	600 / 24"
Weight	kg / lb	63,900 / 140,880	59,800 / 131,840	54,700 / 120,590	54,600 / 120,370
Ground pressure	kg/cm <sup>2</sup> / psi	1.13 / 16.1	1.05 / 14.9	1.03 / 14.7	1.03 / 14.7

# Backhoe bucket

with main boom 4.30 m / 14'1"



## Digging envelope

Main boom pinned in upper (in lower) bearing

		1	2
Stick length	m / ft in	2.50 / 8'2"	2.80 / 9'2"
A Max. reach at ground level	m / ft in	11,13 (10,19) / 36'6" (33' 5")	11,41 (10,48) / 37'5" (34' 5")
B Max. digging depth	m / ft in	2,96 ( 5,35) / 9'9" (17' 7")	3,26 ( 5,65) / 10'8" (18' 6")
C Min. dumping height	m / ft in	5,95 ( 4,77) / 19'6" (15' 8")	5,66 ( 4,47) / 18'7" (14' 8")
D Max. dumping height	m / ft in	10,20 ( 8,21) / 33'6" (26'11")	10,42 ( 8,21) / 34'2" (26'11")
E Max. cutting height	m / ft in	13,61 (11,23) / 44'8" (36'10")	13,84 (11,35) / 45'5" (37' 3")

## Forces

		1	2
Stick digging force (ISO 6015)	kN / lbf	168 / 37,770	156 / 35,070
Bucket digging force (ISO 6015)	kN / lbf	204 / 45,860	204 / 45,860
Stick digging force (SAE J1179)	kN / lbf	160 / 35,970	149 / 33,500
Bucket digging force (SAE J1179)	kN / lbf	178 / 40,020	178 / 40,020

## Operating weight and ground pressure

The operating weight includes the basic machine with counterweight 11.0 t / 24,250 lb, main boom 4.30 m / 14'1", stick 2.50 m / 8'2" and bucket 2.00 m³ / 2.62 yd³ (1,210 kg / 2,670 lb).

Undercarriage		VH-HD	LC-V	LC	NLC
Pad width	mm / in	600 / 24"	600 / 24"	600 / 24"	600 / 24"
Weight	kg / lb	58,000 / 127,870	53,900 / 118,830	48,800 / 107,590	48,700 / 107,370
Ground pressure	kg/cm² / psi	1.02 / 14.5	0.95 / 13.5	0.92 / 13.1	0.92 / 13.1

## Buckets Machine stability per ISO 10567\* (75% of tipping capacity)

Cutting width mm ft in	Capacity ISO 7451 m³ yd³	Weight kg lb	VH-HD undercarriage (with track pads 600 mm / 24")		LC-V undercarriage (with track pads 600 mm / 24")		LC undercarriage (with track pads 600 mm / 24")		NLC undercarriage (with track pads 600 mm / 24")	
			Stick length (m / ft in)		Stick length (m / ft in)		Stick length (m / ft in)		Stick length (m / ft in)	
			2.50 8'2"	2.80 9'2"	2.50 8'2"	2.80 9'2"	2.50 8'2"	2.80 9'2"	2.50 8'2"	2.80 9'2"
1,550 5'1"	1.60 2.09	1,110 2,450	▲	▲	▲	▲	▲	▲	▲	▲
1,650 5'5"	1.75 2.29	1,160 2,560	▲	▲	▲	▲	▲	▲	▲	▲
1,550 5'1"	1.85 2.42	1,170 2,580	▲	▲	▲	▲	▲	▲	▲	▲
1,650 5'5"	2.00 2.62	1,210 2,670	▲	▲	▲	▲	▲	▲	▲	▲
1,750 5'9"	2.15 2.81	1,260 2,780	▲	▲	▲	▲	▲	▲	▲	■

\* Indicated loads are based on ISO 10567, at maximum reach, and may be swung 360° on firm and even ground

Max. material weight ▲ = ≤ 2.0 t/m³ / 3,400 lb/yd, ■ = ≤ 1.8 t/m³ / 3,000 lb/yd³

# Lift capacities

with main boom 4.30 m / 14'1" (pinned in upper bearing), counterweight 11.0 t / 24,250 lb and track pads 600 mm / 24"

## Stick 2.50 m / 8'2"

Under-carriage	4.5 m 15 ft		6.0 m 20 ft		7.5 m 25 ft		9.0 m 30 ft		10.5 m 35 ft		m ft in
12.0 m t											
40 ft lb											
10.5 m t			11.2* 11.2*						9.5* 9.5*	6.7	
35 ft lb			24,1* 24,1*						21,3* 21,3*	21'1"	
9.0 m t			11.2* 11.2*		10.9* 10.9*				8.6* 8.6*	8.2	
30 ft lb			24,8* 24,8*		23,3* 23,3*				19,0* 19,0*	26'7"	
7.5 m t	14.5* 14.5*		13.1* 13.1*		12.4* 12.4*		10.0* 10.0*		8.2* 8.2*	9.3	
25 ft lb	29,4* 29,4*		28,1* 28,1*		26,8* 26,8*		19,5* 19,5*		18,1* 18,1*	30'2"	
6.0 m t			17.0* 17.0*		13.8* 13.8*		11.3 11.8*		8.1* 8.1*	10.0	
20 ft lb			36,7* 36,7*		29,9* 29,9*		24,4 25,7*		17,8* 17,8*	32'7"	
4.5 m t			17.8* 17.8*		14.2 14.5*		11.0 12.1*		8.1* 8.1*	10.4	
15 ft lb			39,9* 39,9*		30,7 31,3*		23,9 26,3*		17,9* 17,9*	34'1"	
3.0 m t					13.7 14.9*		10.8 12.3*		8.4* 8.4*	10.6	
10 ft lb					29,7 32,3*		23,3 26,6*		18,6* 18,6*	34'10"	
1.5 m t					13.4 14.8*		10.6 12.2*	8.7 9.9*	8.6 8.9*	10.6	
5 ft lb					29,0 32,1*		22,8 26,4*		18,9 19,7*	34'10"	
0 m t			9.7* 9.7*		13.3 14.1*		10.5 11.6*		8.8 9.9*	10.4	
0 ft lb			24,1* 24,1*		28,7 30,5*		22,7 25,1*		19,5 20,7*	34'	
-1.5 m t			14.4* 14.4*		12.6* 12.6*		10.4* 10.4*		8.7* 8.7*	9.9	
-5 ft lb			31,6* 31,6*		27,4* 27,4*		22,2* 22,2*		19,2* 19,2*	32'5"	
-3.0 m t											
-10 ft lb											
12.0 m t									11.9* 11.9*		
40 ft lb									26,3* 26,3*	21'1"	
10.5 m t			11.3* 11.3*						9.4* 9.4*	6.7	
35 ft lb			24,4* 24,4*						21,1* 21,1*	21'1"	
9.0 m t			11.3* 11.3*		11.0* 11.0*				8.5* 8.5*	8.2	
30 ft lb			24,8* 24,8*		23,6* 23,6*				18,9* 18,9*	26'7"	
7.5 m t	15.5* 15.5*		13.4* 13.4*		12.4 12.5*		9.3 10.2*		8.2* 8.2*	9.3	
25 ft lb	30,9* 30,9*		28,6* 28,6*		26,7 27,0*		20,0 20,2*		18,0* 18,0*	30'2"	
6.0 m t			16.3 17.1*		11.9 13.8*		9.1 11.9*		7.7 8.1*	10.0	
20 ft lb			35,4 36,9*		25,8 30,0*		19,7 25,8*		17,1 17,8*	32'7"	
4.5 m t			15.2 16.0*		11.4 14.5*		8.9 12.1*		7.2 8.2*	10.4	
15 ft lb			32,9 40,1*		24,6 31,4*		19,2 26,3*		15,8 18,0*	34'1"	
3.0 m t					10.9 14.9*		8.6 12.3*	7.0 10.0*	6.9 8.5*	10.6	
10 ft lb					23,6 32,3*		18,6 26,6*		15,2 18,6*	34'10"	
1.5 m t					10.6 14.8*		8.4 12.2*	6.9 10.0*	6.9 9.0*	10.6	
5 ft lb					22,9 32,1*		18,2 26,3*		15,1 19,8*	34'10"	
0 m t			10.1* 10.1*		10.5 14.0*		8.3 11.5*		7.1 9.4*	10.4	
0 ft lb			24,9* 24,9*		22,7 30,4*		18,0 25,0*		15,6 20,7*	34'	
-1.5 m t			14.3* 14.3*		10.6 12.5*		8.4 10.3*		7.6 8.7*	9.9	
-5 ft lb			31,0 31,3*		22,8 27,2*		18,2 22,0*		16,8 19,1*	32'5"	
-3.0 m t											
-10 ft lb											

## Stick 2.50 m / 8'2"

Under-carriage	4.5 m 15 ft		6.0 m 20 ft		7.5 m 25 ft		9.0 m 30 ft		10.5 m 35 ft		m ft in
12.0 m t											
40 ft lb											
10.5 m t			11.2* 11.2*								9.6* 9.6*
35 ft lb			23,9* 23,9*								21,4* 21,4*
9.0 m t			11.2* 11.2*		10.6 10.9*						8.6* 8.6*
30 ft lb			24,8* 24,8*		22,7 23,1*						19,1* 19,1*
7.5 m t	13.9* 13.9*		13.0* 13.0*		10.4 12.3*		7.7 9.8*				7.3 8.2*
25 ft lb	28,7* 28,7*		27,8* 27,8*		22,4 26,7*		16,6 19,0*				16,4 18,1*
6.0 m t			13.6 17.0*		9.9 13.8*		7.6 11.5				6.4 8.1*
20 ft lb			29,5 36,6*		21,5 29,8*		16,4 24,7				14,3 17,8*
4.5 m t			12.5 18.5*		9.4 14.5*		7.3 11.2				5.9 8.1*
15 ft lb			27,1 39,8*		20,4 31,3*		15,8 24,2				13,1 17,9*
3.0 m t					8.9 14.1		7.1 10.9		5.7 8.8		5.6 8.4*
10 ft lb					19,4 30,4		15,3 23,6				12,5 18,5*
1.5 m t					8.6 13.7		6.9 10.7	5.7 8.7			5.6 8.6
5 ft lb					18,7 29,6		14,9 23,1				12,3 19,0
0 m t			9.5* 9.5*		8.5 13.6		6.8 10.6				5.8 8.9
0 ft lb			23,6* 23,6*		18,4 29,3		14,7 22,9				12,7 19,5
-1.5 m t			11.6 14.5*		8.6 12.7*		6.8 10.4*				6.2 8.7*
-5 ft lb			25,1 31,8*		18,5 27,5*		14,8 22,4*				13,6 19,2*
-3.0 m t											
-10 ft lb											
12.0 m t											
40 ft lb											
10.5 m t			11.2* 11.2*								9.6* 9.6*
35 ft lb			23,9* 23,9*								21,4* 21,4*
9.0 m t			11.2* 11.2*		9.9 10.9*						8.4 8.6*
30 ft lb			24,8* 24,8*		21,1 23,1*						19,0 19,1*
7.5 m t	13.9* 13.9*		13.0* 13.0*		9.7 12.3*		7.2 9.8*				6.8 8.2*
25 ft lb	28,7* 28,7*		27,8* 27,8*		20,8 26,7*		15,4 19,0*				15,2 18,1*
6.0 m t			12.6 17.0*		9.2 13.8*		7.0 11.5				6.0 8.1*
20 ft lb			27,3 36,6*		19,9 29,8*		15,2 24,7				13,2 17,8*
4.5 m t			11.5 18.5*		8.7 14.5*		6.8 11.2				5.5 8.1*
15 ft lb			25,0 39,8*		18,8 31,3*		14,7 24,1				12,1 17,9*
3.0 m t					8.2 14.0		6.5 10.9	5.3 8.8			5.2 8.4*
10 ft lb					17,8 30,3		14,1 23,5				11,5 18,5*
1.5 m t					7.9 13.7		6.3 10.7	5.2 8.7			5.2 8.6
5 ft lb					17,2 29,6		13,7 23,1				11,4 18,9
0 m t			9.5* 9.5*		7.8 13.6		6.3 10.6				5.3 8.8
0 ft lb			22,6 23,6*		16,9 29,3		13,5 22,9				11,7 19,5
-1.5 m t			10.6 14.5*		7.9 12.7*		6.3 10.4*				5.7 8.7*
-5 ft lb			22,9 31,8*		17,0 27,5*		13,6 22,4*				12,6 19,2*
-3.0 m t											
-10 ft lb											

Height Can be slewed through 360° In longitudinal position of undercarriage Max. reach \* Limited by hydr. capacity

The load values are quoted in tons (t) / lb x 1,000 at stick end (without bucket), and may be swung 360° on firm and even ground. Adjacent values are valid for the undercarriage when in the longitudinal position. Capacities are valid for 600 mm / 24" wide track pads. Indicated loads are based on ISO 10567 standard and do not exceed 75% of tipping or 87% of hydraulic capacity (indicated via \*). Without bucket cylinder, link and lever the lift capacities will increase by 410 kg / 900 lb. Lifting capacity of the excavator is limited by machine stability and hydraulic capacity.

Determine maximum load lift from load lift chart displayed in the operator's cab or from load lift chart detailed in the operator's manual supplied with the machine.



### Stick 2.80 m / 9'2"

Under-carriage	4.5 m 15 ft		6.0 m 20 ft		7.5 m 25 ft		9.0 m 30 ft		10.5 m 35 ft		m ft in	
12.0 m t											10.2* 10.2*	4.7
40 ft lb											23.7* 23.7*	
10.5 m t			10.1* 10.1*								8.3* 8.3*	7.1
35 ft lb			22.1* 22.1*								18.5* 18.5*	22.7"
9.0 m t			9.8* 9.8*	9.9* 9.9*							7.5* 7.5*	8.6
30 ft lb			21.7* 21.7*	21.5* 21.5*							16.7* 16.7*	27'10"
7.5 m t	11.1* 11.1*	11.1* 11.1*	11.1* 11.1*	10.9* 10.9*	9.6* 9.6*						7.2* 7.2*	9.6
25 ft lb	23.3* 23.3*	24.0* 24.0*	23.7* 23.7*	20.0* 20.0*							15.9* 15.9*	31'2"
6.0 m t		16.6* 16.6*	13.5* 13.5*	11.4 11.5*							7.1* 7.1*	10.3
20 ft lb		35.9* 35.9*	29.3* 29.3*	24.5 24.5*							15.7* 15.7*	33.7"
4.5 m t		18.2* 18.2*	14.3* 14.3*	11.1 12.0*	8.8* 8.8*						7.2* 7.2*	10.7
15 ft lb		39.2* 39.2*	30.9 30.9*	23.9 26.0*	16.4* 16.4*	15.8* 15.8*	35'1"					
3.0 m t			13.7 14.8*	10.8 12.2*	8.7 10.4*	7.4* 7.4*	10.9					
10 ft lb		23.2* 23.2*	29.7 32.0*	23.3 26.4*	18.8 20.9*	16.3* 16.3*	35'8"					
1.5 m t			13.4 14.8*	10.5 12.2*	8.6 10.1*	7.8* 7.8*	10.9					
5 ft lb		18.8* 18.8*	28.9 32.1*	22.8 26.3*	18.6 21.8*	17.3* 17.3*	35'8"					
0 m t		10.8* 10.8*	13.2 14.2*	10.4 11.7*	8.6 9.4*	8.5 8.5*	10.6					
0 ft lb		26.2* 26.2*	28.6 30.8*	22.5 25.3*		18.7 18.8*	34'11"					
-1.5 m t		15.1* 15.1*	12.9* 12.9*	10.5 10.6*		8.5* 8.5*	10.2					
-5 ft lb		32.9* 32.9*	28.0* 28.0*	22.6 22.9*		18.8* 18.8*	33'5"					
-3.0 m t			10.8* 10.8*			9.3* 9.3*	8.7					
-10 ft lb			23.3* 23.3*			21.2* 21.2*	28'					

### Stick 2.80 m / 9'2"

Under-carriage	4.5 m 15 ft		6.0 m 20 ft		7.5 m 25 ft		9.0 m 30 ft		10.5 m 35 ft		m ft in	
12.0 m t											10.4* 10.4*	4.7
40 ft lb											8.3* 8.3*	7.1
10.5 m t			10.1* 10.1*								8.3* 8.3*	7.1
35 ft lb			22.1* 22.1*								18.6* 18.6*	22.7"
9.0 m t			9.8* 9.8*	9.9* 9.9*							7.5* 7.5*	8.6
30 ft lb			21.7* 21.7*	21.4* 21.4*							16.8* 16.8*	27'10"
7.5 m t	10.8* 10.8*	10.8* 10.8*	11.0* 11.0*	10.5 10.8*	7.8 9.5*						7.0 7.2*	9.6
25 ft lb	22.9* 22.9*	23.8* 23.8*	22.6 23.6*	16.8 19.8*							15.6 15.9*	31'2"
6.0 m t		13.8 16.6*	10.0 13.5*	7.6 11.4*							6.1 7.1*	10.3
20 ft lb		29.9 35.8*	21.6 29.3*	16.4 24.4*							13.6 15.7*	33.7"
4.5 m t		12.7 18.1*	9.5 14.2*	7.4 11.2*	5.8 8.7*						5.7 7.2*	10.7
15 ft lb		27.5 39.1*	20.5 30.8*	15.9 24.2*	12.6 16.1*	12.5 15.8*	35'1"					
3.0 m t			9.0 14.1*	7.1 10.9*	5.7 8.8*	5.4 7.4*	10.9					
10 ft lb		23.7* 23.7*	19.4 30.4*	15.3 23.5*	12.3 18.9*	12.0 16.3*	35'8"					
1.5 m t			8.6 13.7*	6.9 10.7*	5.6 8.7*	5.4 7.8*	10.9					
5 ft lb		18.7* 18.7*	18.6 29.6*	14.8 23.0*	12.1 18.7*	11.8 17.2*	35'8"					
0 m t		10.6* 10.6*	8.5 13.5*	6.7 10.6*	5.6 8.6*	5.5 8.5*	10.6					
0 ft lb		24.5 25.8*	18.3 29.2*	14.6 22.8*		12.1 18.7*	34'11"					
-1.5 m t		11.5 15.2*	8.5 13.0*	6.8 10.6*		5.9 8.6*	10.2					
-5 ft lb		24.8 33.1*	18.4 28.1*	14.6 22.8*		13.0 18.9*	33'5"					
-3.0 m t			8.7 10.9*			7.2 9.1*	8.7					
-10 ft lb			18.7 23.5*			16.2 20.5*	28'					

Height Can be slewed through 360° In longitudinal position of undercarriage Max. reach \* Limited by hydr. capacity

The load values are quoted in tons (t) / lb x 1,000 at stick end (without bucket), and may be swung 360° on firm and even ground. Adjacent values are valid for the undercarriage when in the longitudinal position. Capacities are valid for 600 mm / 24" wide track pads. Indicated loads are based on ISO 10567 standard and do not exceed 75% of tipping or 87% of hydraulic capacity (indicated via \*). Without bucket cylinder, link and lever the lift capacities will increase by 410 kg / 900 lb. Lifting capacity of the excavator is limited by machine stability and hydraulic capacity.

Determine maximum load lift from load lift chart displayed in the operator's cab or from load lift chart detailed in the operator's manual supplied with the machine.

# Lift capacities

with main boom 4.30 m / 14'1" (pinned in lower bearing), counterweight 11.0 t / 24,250 lb and track pads 600 mm / 24"

## Stick 2.50 m / 8'2"

Under-carriage	4.5 m 15 ft		6.0 m 20 ft		7.5 m 25 ft		9.0 m 30 ft		10.5 m 35 ft		m ft in
9.0 m t											8.3* 8.3* 7.3
30 ft lb											18.5* 18.5* 23'6"
7.5 m t			12.9* 12.9*	11.5* 11.5*							8.1* 8.1* 8.5
25 ft lb			28.0* 28.0*	24.6* 24.6*							17.8* 17.8* 27'7"
6.0 m t	19.5* 19.5*	14.5* 14.5*	12.2* 12.2*	10.0* 10.0*							8.1* 8.1* 9.2
20 ft lb	41.4* 41.4*	31.3* 31.3*	26.5* 26.5*	19.3* 19.3*							17.9* 17.9* 30'2"
4.5 m t		16.6* 16.6*	13.2* 13.2*	11.4 11.4*							8.4* 8.4* 9.7
15 ft lb		35.7* 35.7*	28.6* 28.6*	24.6 24.9*							18.5* 18.5* 31'10"
3.0 m t		18.4* 18.4*	14.2* 14.2*	11.1 11.9*							9.0* 9.0* 9.9
10 ft lb		39.6* 39.6*	30.7* 30.7*	24.0 25.9*							19.7* 19.7* 32'7"
1.5 m t		16.4* 16.4*	13.8 14.8*	10.9 12.3*							9.5 9.8* 9.9
5 ft lb		40.2 40.6*	29.9 32.1*	23.4 26.6*							21.0 21.6* 32'6"
0 m t		18.4 18.9*	13.6 15.0*	10.7 12.3*							9.8 11.3* 9.7
0 ft lb		39.8 40.9*	29.3 32.5*	23.1 26.7*							21.6 24.8* 31'8"
-1.5 m t	12.0* 12.0*	18.0* 18.0*	13.5 14.5*	10.7 11.7*							10.5 11.5* 9.1
-5 ft lb	27.9* 27.9*	39.0* 39.0*	29.2 31.4*								23.2 25.4* 29'11"
-3.0 m t		16.2* 16.2*	13.2* 13.2*								11.6* 11.6* 8.3
-10 ft lb	42.2* 42.2*	35.2* 35.2*	28.3* 28.3*								25.5* 25.5* 27'1"
-4.5 m t											
-15 ft lb											

## Stick 2.50 m / 8'2"

Under-carriage	4.5 m 15 ft		6.0 m 20 ft		7.5 m 25 ft		9.0 m 30 ft		10.5 m 35 ft		m ft in
9.0 m t											8.3* 8.3* 7.3
30 ft lb											18.5* 18.5* 23'6"
7.5 m t			12.9* 12.9*	10.9 11.5*							8.1* 8.1* 8.5
25 ft lb			28.0* 28.0*	23.5 24.4*							17.8* 17.8* 27'7"
6.0 m t	19.3* 19.3*	14.5* 14.5*	10.5 12.2*	7.9 9.8*							7.6 8.1* 9.2
20 ft lb	41.0* 41.0*	31.2* 31.2*	22.7 26.5*	17.0 19.0*							16.8 17.9* 30'2"
4.5 m t		13.4 16.5*	10.0 13.2*	7.7 11.4*							6.8 8.4* 9.7
15 ft lb		29.2 35.6*	21.6 28.6*	16.6 24.8*							15.1 18.5* 31'10"
3.0 m t		12.4 18.3*	9.4 14.2*	7.4 11.3							6.4 8.9* 9.9
10 ft lb		27.0 39.5*	20.4 30.7*	16.0 24.3							14.2 19.6* 32'7"
1.5 m t		11.9 16.4*	9.0 14.2	7.2 11.0							6.3 9.6 9.9
5 ft lb		25.7 40.6*	19.5 30.6	15.4 23.7							13.9 21.2 32'6"
0 m t		11.7 18.9*	8.8 13.9	7.0 10.8							6.4 9.9 9.7
0 ft lb		25.3 41.0*	19.0 30.0	15.1 23.4							14.1 21.7 31'8"
-1.5 m t	11.7* 11.7*	11.7 18.0*	8.7 13.8	7.0 10.8							6.9 10.6 9.1
-5 ft lb	27.2* 27.2*	25.3 39.1*	18.9 29.8								15.1 23.4 29'11"
-3.0 m t		11.9 16.3*	8.9 13.2*								7.8 11.6* 8.3
-10 ft lb	39.2 42.4*	25.7 35.4*	19.1 28.5*								17.4 25.5* 27'1"
-4.5 m t											
-15 ft lb											

Height Can be slewed through 360° In longitudinal position of undercarriage Max. reach \* Limited by hydr. capacity

The load values are quoted in tons (t) / lb x 1,000 at stick end (without bucket), and may be swung 360° on firm and even ground. Adjacent values are valid for the undercarriage when in the longitudinal position. Capacities are valid for 600 mm / 24" wide track pads. Indicated loads are based on ISO 10567 standard and do not exceed 75% of tipping or 87% of hydraulic capacity (indicated via \*). Without bucket cylinder, link and lever the lift capacities will increase by 410 kg / 900 lb. Lifting capacity of the excavator is limited by machine stability and hydraulic capacity.

Determine maximum load lift from load lift chart displayed in the operator's cab or from load lift chart detailed in the operator's manual supplied with the machine.

### Stick 2.80 m / 9'2"

Under-carriage	4.5 m 15 ft		6.0 m 20 ft		7.5 m 25 ft		9.0 m 30 ft		10.5 m 35 ft		m ft in
9.0 m t					8.2*	8.2*			7.3*	7.3*	7.7
30 ft lb					16.6*	16.6*			16.2*	16.2*	24'8"
7.5 m t					10.6*	10.6*			7.1*	7.1*	8.8
25 ft lb					22.8*	22.8*			15.7*	15.7*	28'7"
6.0 m t	18.4*	18.4*	14.0*	14.0*	11.9*	11.9*	9.8*	9.8*	7.1*	7.1*	9.5
20 ft lb	39.2*	39.2*	30.3*	30.3*	25.8*	25.8*	20.0*	20.0*	15.7*	15.7*	31'1"
4.5 m t			16.1*	16.1*	12.9*	12.9*	11.2*	11.2*	7.4*	7.4*	10.0
15 ft lb			34.7*	34.7*	28.0*	28.0*	24.3*	24.3*	16.2*	16.2*	32'8"
3.0 m t			18.0*	18.0*	13.9*	13.9*	11.1*	11.7*	7.8*	7.8*	10.2
10 ft lb			38.7*	38.7*	30.2*	30.2*	24.0*	25.5*	17.2*	17.2*	33'6"
1.5 m t			18.5*	18.5*	13.8*	14.7*	10.8*	12.1*	8.6*	8.6*	10.2
5 ft lb			40.3*	40.9*	29.9*	31.8*	23.4*	26.4*	18.9*	18.9*	33'5"
0 m t			18.4*	18.9*	13.6*	14.9*	10.7*	12.3*	9.4*	9.7*	9.9
0 ft lb			39.7*	41.0*	29.3*	32.3*	23.0*	26.6*	20.7*	21.4*	32'7"
-1.5 m t	12.0*	12.0*	18.2*	18.2*	13.5*	14.6*	10.6*	11.9*	10.0*	11.2*	9.4
-5 ft lb	27.8*	27.8*	39.5*	39.5*	29.0*	31.6*	22.9*	25.6*	22.2*	24.7*	30'11"
-3.0 m t	19.9*	19.9*	16.7*	16.7*	13.5*	13.5*			11.3*	11.3*	8.6
-10 ft lb	44.2*	44.2*	36.1*	36.1*	29.0*	29.0*			24.9*	24.9*	28'2"
-4.5 m t											7.1
-15 ft lb											

### Stick 2.80 m / 9'2"

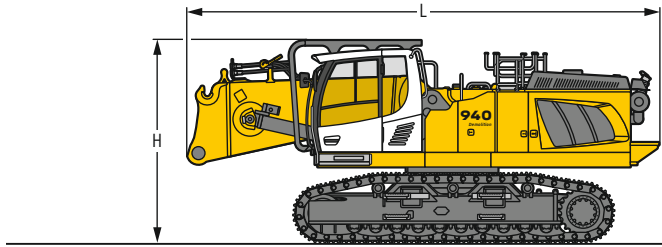
Under-carriage	4.5 m 15 ft		6.0 m 20 ft		7.5 m 25 ft		9.0 m 30 ft		10.5 m 35 ft		m ft in
9.0 m t					8.0*	8.0*			7.3*	7.3*	7.7
30 ft lb					16.3*	16.3*			16.3*	16.3*	24'8"
7.5 m t					10.5*	10.5*			7.1*	7.1*	8.8
25 ft lb					22.4*	22.4*			15.7*	15.7*	28'7"
6.0 m t	18.2*	18.2*	14.0*	14.0*	10.6*	11.9*	8.0*	9.7*	7.1*	7.1*	9.5
20 ft lb	38.9*	38.9*	30.1*	30.1*	22.9*	25.7*	17.2*	19.8*	15.7*	15.7*	31'1"
4.5 m t			13.6*	16.0*	10.0*	12.9*	7.7*	11.2*	6.6*	7.4*	10.0
15 ft lb			29.5*	34.5*	21.7*	27.9*	16.6*	24.3*	14.5*	16.2*	32'8"
3.0 m t			12.6*	17.9*	9.5*	13.9*	7.4*	11.3*	6.2*	7.8*	10.2
10 ft lb			27.2*	38.6*	20.5*	30.1*	16.0*	24.3*	13.6*	17.2*	33'6"
1.5 m t			11.9*	18.5*	9.0*	14.2*	7.1*	11.0*	6.0*	8.5*	10.2
5 ft lb			25.8*	40.8*	19.5*	30.6*	15.4*	23.7*	13.3*	18.8*	33'5"
0 m t			11.7*	18.9*	8.8*	13.9*	7.0*	10.8*	6.1*	9.5*	9.9
0 ft lb			25.2*	41.0*	18.9*	29.9*	15.0*	23.3*	13.5*	20.8*	32'7"
-1.5 m t	11.8*	11.8*	11.6*	18.2*	8.7*	13.8*	6.9*	10.7*	6.5*	10.1*	9.4
-5 ft lb	27.2*	27.2*	25.1*	39.5*	18.7*	29.7*	14.9*	23.2*	14.4*	22.3*	30'11"
-3.0 m t	18.0*	19.5*	11.8*	16.7*	8.7*	13.5*			7.4*	11.3*	8.6
-10 ft lb	38.7*	44.4*	25.4*	36.2*	18.9*	29.2*			16.4*	24.9*	28'2"
-4.5 m t									9.6*	11.7*	7.1
-15 ft lb											

Height Can be slewed through 360° In longitudinal position of undercarriage Max. reach \* Limited by hydr. capacity

The load values are quoted in tons (t) / lb x 1,000 at stick end (without bucket), and may be swung 360° on firm and even ground. Adjacent values are valid for the undercarriage when in the longitudinal position. Capacities are valid for 600 mm / 24" wide track pads. Indicated loads are based on ISO 10567 standard and do not exceed 75% of tipping or 87% of hydraulic capacity (indicated via \*). Without bucket cylinder, link and lever the lift capacities will increase by 410 kg / 900 lb. Lifting capacity of the excavator is limited by machine stability and hydraulic capacity.

Determine maximum load lift from load lift chart displayed in the operator's cab or from load lift chart detailed in the operator's manual supplied with the machine.

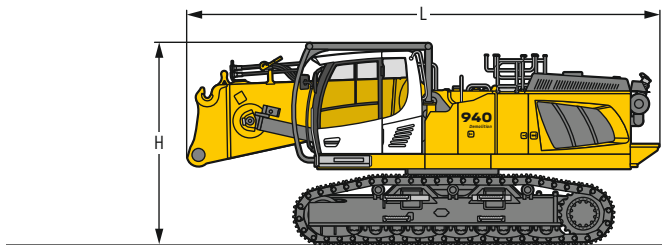
# Dimensions and weights



## Basic machine

without counterweight with cab tilttable 30° and integral protection grid

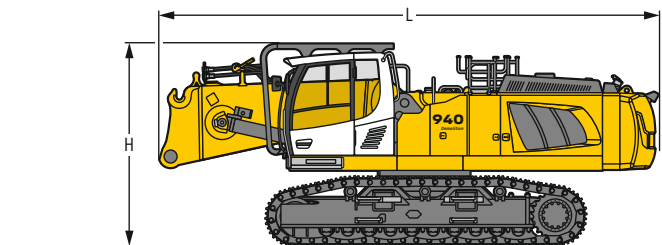
		VH-HD	LC-V	LC	NLC
L	mm / ft in	8,000 / 26'3"	8,000 / 26'3"	8,000 / 26'3"	8,000 / 26'3"
H	mm / ft in	3,400 / 11'2"	3,510 / 11'6"	3,355 / 11'	3,355 / 11'
Weight	kg / lb	40,900 / 90,170	36,800 / 81,130	31,700 / 69,890	31,600 / 69,670



## Basic machine

without counterweight with cab tilttable 30° and integral protection grid on tilting device

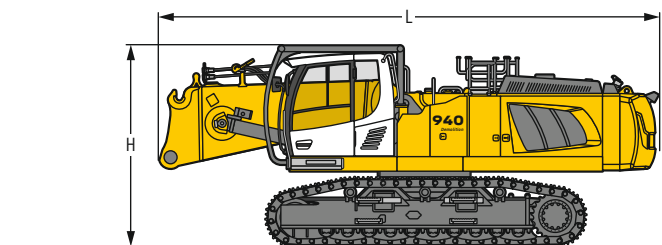
		VH-HD	LC-V	LC	NLC
L	mm / ft in	8,000 / 26'3"	8,000 / 26'3"	8,000 / 26'3"	8,000 / 26'3"
H	mm / ft in	3,400 / 11'2"	3,510 / 11'6"	3,355 / 11'	3,355 / 11'
Weight	kg / lb	41,300 / 91,050	37,200 / 82,010	32,100 / 70,770	32,000 / 70,550



## Basic machine

with counterweight 11.0 t / 24,250 lb, cab tilttable 30° and integral protection grid

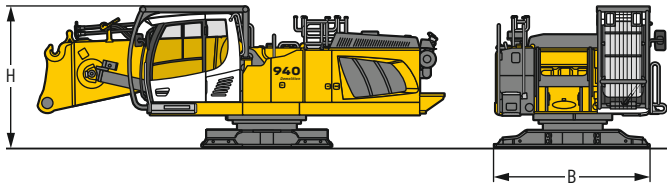
		VH-HD	LC-V	LC	NLC
L	mm / ft in	8,450 / 27'9"	8,450 / 27'9"	8,450 / 27'9"	8,450 / 27'9"
H	mm / ft in	3,400 / 11'2"	3,510 / 11'6"	3,355 / 11'	3,355 / 11'
Weight	kg / lb	51,900 / 114,420	47,800 / 105,380	42,700 / 94,140	42,600 / 93,920



## Basic machine

with counterweight 11.0 t / 24,250 lb, cab tilttable 30° and integral protection grid on tilting device

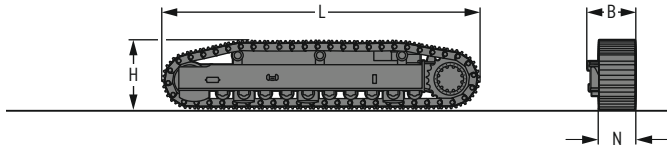
		VH-HD	LC-V	LC	NLC
L	mm / ft in	8,450 / 27'9"	8,450 / 27'9"	8,450 / 27'9"	8,450 / 27'9"
H	mm / ft in	3,400 / 11'2"	3,510 / 11'6"	3,355 / 11'	3,355 / 11'
Weight	kg / lb	52,300 / 115,300	48,200 / 106,260	43,100 / 95,020	43,000 / 94,800



### Basic machine

without side frames

B	mm / ft in	2,995 / 9'10"
H	mm / ft in	2,750 / 9'
Weight	kg / lb	24,700 / 54,450



### Side frame

for LC-V undercarriage

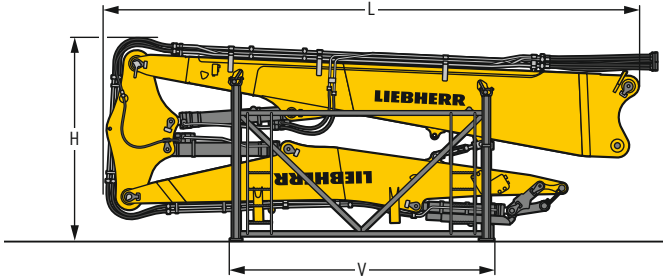
L	Length	mm / ft in	5,555 / 18' 3"
H	Height	mm / ft in	1,175 / 3'10"
N		mm / ft in	600 / 24"
B		mm / ft in	795 / 2' 7"
Weight		kg / lb	6,250 / 13,780



### Counterweight

L	Length	mm / ft in	940 / 3'1"
H	Height	mm / ft in	1,420 / 4'8"
Width		mm / ft in	2,970 / 9'9"
Weight		kg / lb	11,000 / 24,250

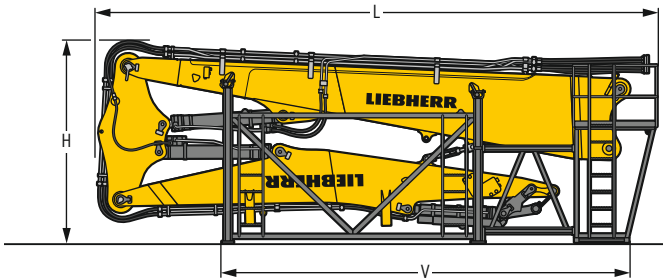
# Dimensions and weights



## Demolition equipment

with storage rack

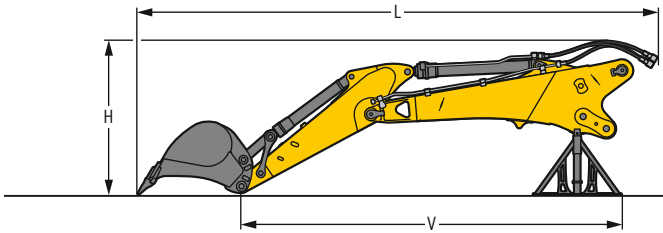
L Length	mm / ft in	23,00 / 75'6"
H Height	mm / ft in	3,400 / 11'2"
V Width	mm / ft in	4,450 / 14'7"
Weight without attachment	kg / lb	10,100 / 22,270



## Demolition equipment

with storage rack with catwalks

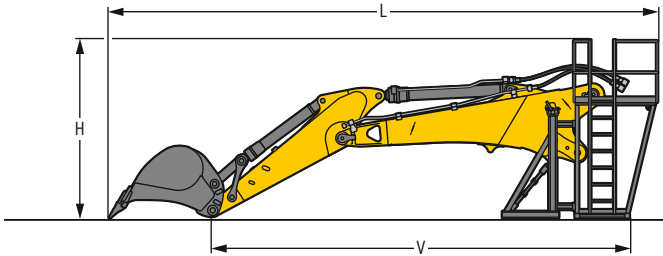
L Length	mm / ft in	23,00 / 75'6"
H Height	mm / ft in	3,400 / 11'2"
V Width	mm / ft in	6,900 / 22'8"
Weight without attachment	kg / lb	10,900 / 24,030



## Backhoe equipment

with storage rack

Main boom length	m / ft in	4.30 / 14'1"
Stick length	m / ft in	2.50 / 8'2"    2.80 / 9' 2"
L Length	mm / ft in	8,800 / 28'10"    9,100 / 29'10"
H Height	mm / ft in	2,600 / 8' 6"    2,600 / 8' 6"
V Width	mm / ft in	6,450 / 21' 2"    6,750 / 22' 2"
Weight without bucket	kg / lb	5,100 / 11,240    5,200 / 11,460

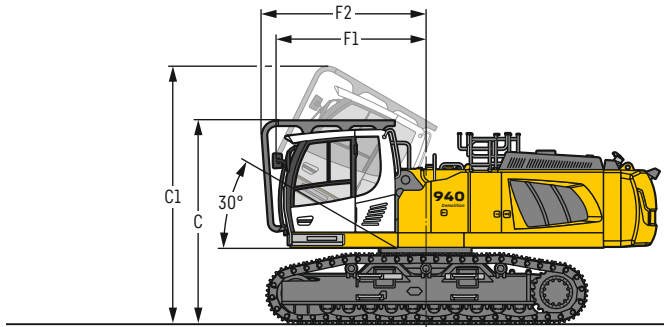


## Backhoe equipment

with storage rack with catwalks

Main boom length	m / ft in	4.30 / 14'1"
Stick length	m / ft in	2.50 / 8'2"    2.80 / 9' 2"
L Length	mm / ft in	9,300 / 30' 6"    9,600 / 31' 6"
H Height	mm / ft in	3,020 / 9'11"    3,020 / 9'11"
V Width	mm / ft in	7,050 / 23' 2"    7,350 / 24' 1"
Weight without bucket	kg / lb	5,700 / 12,570    5,800 / 12,790

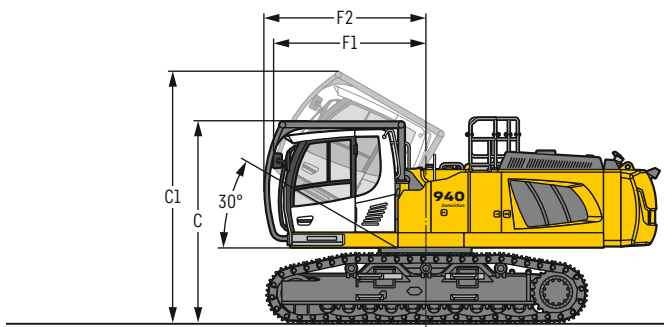
# Choice of cab elevations



## Version

with cab tiltable 30° and integral protection grid

		VH-HD	LC-V	LC	NLC
C	mm / ft in	3,400 / 11'2"	3,510 / 11'6"	3,365 / 11'	3,365 / 11'
C1	mm / ft in	4,325 / 14'2"	4,435 / 14'7"	4,290 / 14'1"	4,290 / 14'1"
F1	mm / ft in	2,530 / 8'4"	2,530 / 8'4"	2,530 / 8'4"	2,530 / 8'4"
F2	mm / ft in	2,770 / 9'1"	2,770 / 9'1"	2,770 / 9'1"	2,770 / 9'1"



## Version

with cab tiltable 30° and integral protection grid on tilting device

		VH-HD	LC-V	LC	NLC
C	mm / ft in	3,400 / 11' 2"	3,510 / 11' 6"	3,365 / 11'	3,365 / 11'
C1	mm / ft in	4,245 / 13'11"	4,355 / 14' 3"	4,210 / 13'10"	4,210 / 13'10"
F1	mm / ft in	2,570 / 8' 5"	2,570 / 8' 5"	2,570 / 8' 5"	2,570 / 8' 5"
F2	mm / ft in	2,730 / 8'11"	2,730 / 8'11"	2,730 / 8'11"	2,730 / 8'11"

# Serial equipment

## Undercarriage

Lashing eyes  
Sprocket with dirt ejector  
Track rollers, lifetime-lubricated  
Tracks, sealed and greased

## Uppercarriage

Anti-skid surfaces  
Automatic swing brake lock  
Centralized lubrication system (automatic)  
Engine hood with gas spring opening  
Handrails  
Lockable fuel tank cap  
Lockable tool box  
Sound insulation

## Hydraulic system

Filter with integrated fine filters  
High pressure circuit with Tool Control and LDC  
Hydraulic pressure measuring ports  
Medium pressure circuit  
Pressure accumulator for controlled lowering of equipment with engine turned off  
Shut-off valve between hydraulic tank and pumps

## Engine

Air filter with automatic dust ejector  
Automatic engine idling / speed increase, controlled via joystick sensors  
Common-Rail injection system  
Exhaust gas after-treatment system - DOC + SCR  
Fixed geometry turbocharger  
Fuel pre-filter and water separator  
Intercooler  
Power Pack US EPA Tier 4 Final

## Cab

7" multifunction color touchscreen + demolition display for LDC  
Air conditioning, automatic, tri-zone, controlled via display  
Bottle holder  
Cab door sliding windows  
Cigarette lighter  
Coat hook  
DEF level on touchscreen  
Emergency stop in cab  
Engine oil level on touchscreen  
Fuel level on touchscreen  
Hydraulic oil level on touchscreen  
Impact resistant one-piece windscreen  
Impact resistant roof window  
Integral front wiper and washer  
Integral protection guard  
Interior lighting  
Left hand side view monitoring camera  
LIDAT Plus (Liebherr data transfer system)\*  
Mechanical hour meters, visible from ground level  
Rear view monitoring camera  
Rear window emergency exit  
Right hand side view monitoring camera  
Roll-down sun blinds for windscreen and roof window  
Roof wiper and washer  
Rubber floor mat, fixed on floor and removable  
Storage spaces  
Visco-elastic damping  
Work mode selector

## Equipment

Pipe fracture safety valves for boom cylinders  
Standard boom with quick change coupling

\* optionally extendable after one year



# Equipment standard / option

## Undercarriage

Chain guide 1 piece	●
Chain guide 4 pieces	+
Chain guide full length	+
Chain scrapers	+
Special painting	+
Tracks, sealed and greased	●
Undercarriage LC	+
Undercarriage LC-V	+
Undercarriage NLC	+
Undercarriage VH-HD	+

## Uppercarriage

Air compressor	+
Boxing ring	+
Catwalks tiltable left and right	+
Electric socket on uppercarriage (24 V)	+
Fogging system	+
Headlight on uppercarriage, front right, LED, 1 piece, protection included	● <sup>1)</sup>
Headlight on uppercarriage, front right, LED+, 1 piece, protection included	+ <sup>1)</sup>
Headlight on uppercarriage, lateral left, LED+, 1 piece	+ <sup>1)</sup>
Headlights on uppercarriage, rear, LED+, 2 pieces	+ <sup>1)</sup>
Lighting for tank area	+ <sup>1)</sup>
Lighting for uppercarriage access	+ <sup>1)</sup>
Radiator fine mesh protection grid	+
Reversible fan drive	+
Rock protection (swing gear and lubrication pipes)	+
Special painting	+
Tank refilling pump fuel	+
Tool set including storage case	●
Transport device for the counterweight	+
Uppercarriage bottom and side protection	+

## Hydraulic system

Bypass filter for hydraulic oil	+
Filter for hydraulic hammer return flow	+
High flow	+
Liebherr hydraulic oil	●
Liebherr hydraulic oil, adapted for extreme climate conditions	+
Liebherr hydraulic oil, biodegradable	+
Pre-heating system for hydraulic oil (240 V)	+

## Engine

Automatic engine shutdown after idling	+
Pre-heating system for fuel, coolant and engine oil (240 V)	+

## Cab

2" seat belt with retractor	●
3" seat belt with retractor, orange color	+
4-points seat belt	+
Acoustic travel alarm deactivatable	+
Additional air filtration	+
Air system for roof window cleaning	+
Auxiliary heater programmable	+
Coming / Leaving Home with lighting for cabin access	+
Cool box (12 V)	+
Dark tinted windows	+
Electrically adjustable and heated outside rear-view mirrors	+
Electronic immobilizer	+
Fire extinguisher	+
Footrest	+
Headlights on cab, front, LED, 2 pieces	● <sup>1)</sup>
Headlights on cab, front, LED+, 2 pieces	+ <sup>1)</sup>
Luminosity control (LED+ headlights)	+ <sup>1)</sup>
Operator seat Comfort	●
Operator seat Premium	+
Radio Comfort	+
Radio pre-installation	●
Rotating beacon on cabin, LED, 1 piece	+
Sun visor	+

## Equipment

Boom cylinder rods protection	+
Bucket cylinder rod protection for backhoe equipment	+
Camera for equipment	+
Centralized lubrication extended for connecting link for backhoe equipment	+
Fogging system for backhoe equipment	+
Fogging system for demolition equipment	+
Headlight on boom, on each side, LED, 1 piece, protection included	● <sup>1)</sup>
Headlight on boom, on each side, LED+, 1 piece, protection included	+ <sup>1)</sup>
Headlights on equipment, LED, 4 pieces, protections included	●
Headlights on equipment, LED+, 4 pieces, protections included	+
High pressure circuit for backhoe equipment	+
LIKUFIX for quick coupler SWA 66 hydraulic	+
Medium pressure circuit for backhoe equipment	+
Overload warning system	+
Pipe fracture safety valve for stick cylinder for backhoe equipment	+
Quick coupler for standard boom	+
Quick coupler SWA 66 hydraulic	+
Quick coupler SWA 66 mechanical	+
Standard boom with multicouplers for demolition boom and backhoe equipment	+
Stick bottom protection	+
Storage rack with catwalks	+
Tool Management	+

● = Standard, + = Option

<sup>1)</sup> Equipment not individually available, but only as predefined packages

Non-exhaustive list, please contact us for further information.

Options and / or special equipment, supplied by vendors other than Liebherr, are only to be installed with the knowledge and approval of Liebherr in order to retain warranty.





# The Liebherr Group



## Global and independent: more than 70 years of success

Liebherr was founded in 1949. With the development of the world's first mobile tower crane, Hans Liebherr laid the foundations of a successful family business which today comprises more than 140 companies on all continent and employs nearly 50,000 people. The parent company of the Group is Liebherr-International AG in Bulle (Switzerland), whose associates are exclusively members of the Liebherr family.

## Technology leadership and pioneering spirit

Liebherr regards itself as a pioneer. This spirit has enabled the company to make a decisive contribution to the technological history of many industries. Today, employees around the world still share the courage of the company founder to take new paths. They are all united by a passion for technology and fascinating products and the determination to perform outstanding work for their customers.

## Widely diversified product portfolio

Not only is Liebherr one of the biggest construction equipment manufacturers in the world, it also provides high-quality, user-oriented products and services in a wide range of other areas. The product portfolio includes the segments earthmoving, material handling technology, deep foundation machines, mining, mobile and crawler cranes, tower cranes, concrete technology, maritime cranes, aerospace and transportation systems, gear technology and automation systems, refrigeration and freezing, components and hotels.

## Customized solutions and maximum customer benefit

Liebherr solutions are characterized by maximum precision, outstanding implementation and exceptional longevity. Its mastery of key technologies enables the company to offer its customers customized solutions. For Liebherr, customer focus does not end with the product; it also encompasses a wide range of services that make a real difference.

[www.liebherr.us](http://www.liebherr.us)

## WARNING

Breathing diesel engine exhaust exposes you to chemicals known to the State of California to cause cancer and birth defects or other reproductive harm.

- Always start and operate the engine in a well-ventilated area.
- If in an enclosed area, vent the exhaust to the outside.
- Do not modify or tamper with exhaust system.
- Do not idle the engine except as necessary.

For more information go to [www.P65warnings.ca.gov/diesel](http://www.P65warnings.ca.gov/diesel).

## WARNING

This product can expose you to chemicals including lead and lead compounds, which are known to the State of California to cause cancer and birth defects or other reproductive harm.

For more information go to [www.P65warnings.ca.gov](http://www.P65warnings.ca.gov).

## Liebherr USA, Co.

Construction Equipment Division • 4800 Chestnut Avenue • Newport News, VA 23607, USA • Phone +1 (757) 240 4250  
[construction.usa@liebherr.com](mailto:construction.usa@liebherr.com) • [www.liebherr.us](http://www.liebherr.us) • [www.facebook.com/LiebherrConstruction](https://www.facebook.com/LiebherrConstruction)