

Crawler Dozer

PR 756

Litronic®

Generation

8

Operating weight

35.2 - 43.0 tons

Engine power

260 kW / 353 hp

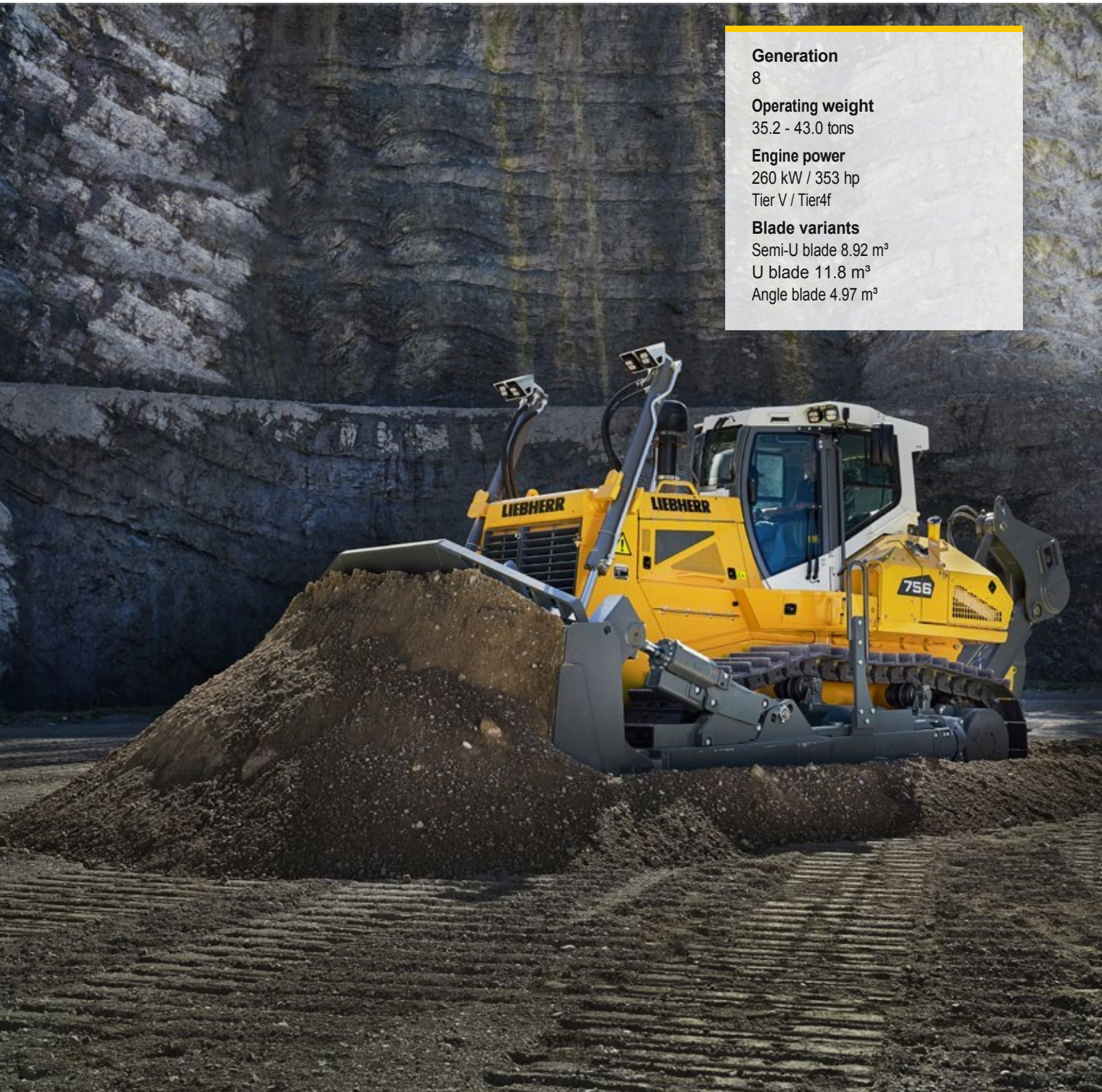
Tier V / Tier4f

Blade variants

Semi-U blade 8.92 m³

U blade 11.8 m³

Angle blade 4.97 m³



LIEBHERR

Technical data



Diesel engine

Liebherr diesel engine	D 946 EVO Emission limit values compliance: 97/68/EG, 2004/26/EG Tier V, EPA/CARB Tier 4f
Rated power (net)	
ISO 9249	260 kW / 353 hp
SAE J1349	260 kW / 349 hp
Maximum power (net)	
ISO 9249	275 kW / 374 hp
SAE J1349	275 kW / 369 hp
Nominal speed	1,600 rpm
Engine volume	12 l
Type.	6 cylinder in-line engine water cooled, exhaust gas turbo compressor, air-to-air intercooler
Injection system	Direct injection, Common Rail, electronic control
Engine lubrication	Pressurized circulation lubrication, Suitable for tilted position up to 45°
Operating voltage	24 V
Alternator	140 A
Starter motor	7.8 kW
Batteries	4 x 95 Ah / 12 V
Air filter	Low pressure gauge and automatic dust separator dry air filter, type with main element and safety element (inside-outside)
Cooling system	Cooling unit for water and charge air combined radiator consisting of hydrostatic fan drive



Working hydraulics

Hydraulic system	Proportional pump flow control with load sensing
Pump type	Piston type with swash plate
Pump flow rate, max.	256 l/min
Pump pressure, max.	260 bar
Main hydraulic control	2 sections, expandable to 4 sections
Filter system	Rotation by magnetic rod in the hydraulic tank filter
Remote Control	Single control lever for all blade movements



Drive drive

Drive system	Stepless hydrostatic drive drive, every movement Independent drive for the assembly side
Driving speed *	Infinitely adjustable 0 - 4.0 km/h (forward & reverse) 0 - 6.0 km/h (forward & reverse) 0 - 11.0 km/h (forward & reverse) * Preset, all speed ranges from the drive transmitter adaptable
V area 1:	4.0 km/h (forward & reverse)
V area 2:	0 - 6.0 km/h (forward & reverse)
V area 3:	0 - 11.0 km/h (forward & reverse)
Motor load control	Electronic controller controls engine speed and adjusts the driving speed depending on the required thrust
Steering Wheel	Hydrostatics
Foot brake	Hydrostatic self-locking, wear-free
Parking brake	Wet multi-disc brake, wear-free, joystick in zero automatic activation in position
Cooling system	Separate hydraulic oil cooler, hydrostatic fan provocation
Filtering	Fine filtration in the feed pressure system
Traction group	Spur gear with sequential planetary gear train gearbox, double transmission seal with electronic seal control
Remote Control	Proportional for all driving and maneuvering movements joystick



Driver's cab

Cabin	Enclosed cab with fresh air pressurization, hydro-elastic mattress, 40° tiltable via hand pump, integrated ROPS Anti-Tipping Protection System (EN ISO 3471) and FOPS Falling Protective Structures Against Objects (EN ISO 3449)
Driver seat	Air-suspension comfort seat for the driver can be adjusted according to
Control	Touch-controlled display: Display of current machine data, automatic monitoring of operating states and drive-specific parameters setting
Vibration emission	
Hand-arm vibration	< 2.5 m/s ² , according to ISO 5349-1:2001
Full body vibration	0.24 - 1.31 m/s ² , ISO/TR 25398:2006 technical in accordance with the report
Measurement insecurity	Conforms to EN 12096:1997

Movement assembly

	Standard	LGP
Design	Fixed or bogie suspension or steering motion device with wheel oscillation	
Assembly	With separate pivot shafts and oscillating equalizer bar	
Chains	Oil type, single claw shoe, tensioning system adjustable type	
Chain link (on one side)	44	44
Walking reel (on one side)	7	7
Carrier roller (on one side)	2	2
Traction gear segment (One side)	5	5
Track shoes, standard	610 mm	914 mm
Track shoes, option	560 mm, 711 mm	965 mm

Sound level

Noise level according to ISO 6396

L_{pA} (in cabin) 75 dB(A)

Noise level according to 2000/14/EG

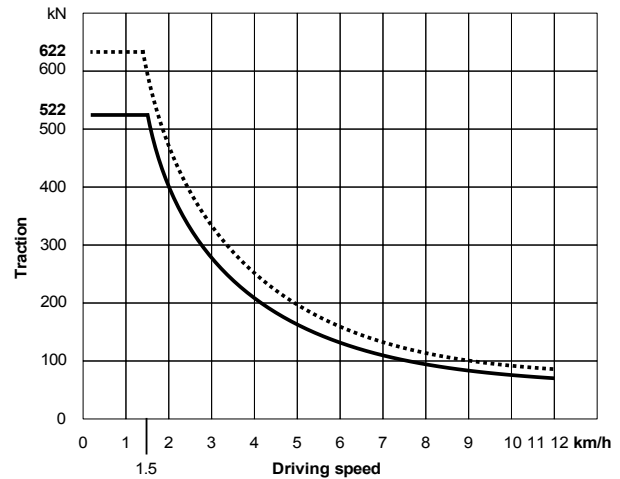
L_{WA} (in the neighborhood) 113 dB(A)

Filling quantities

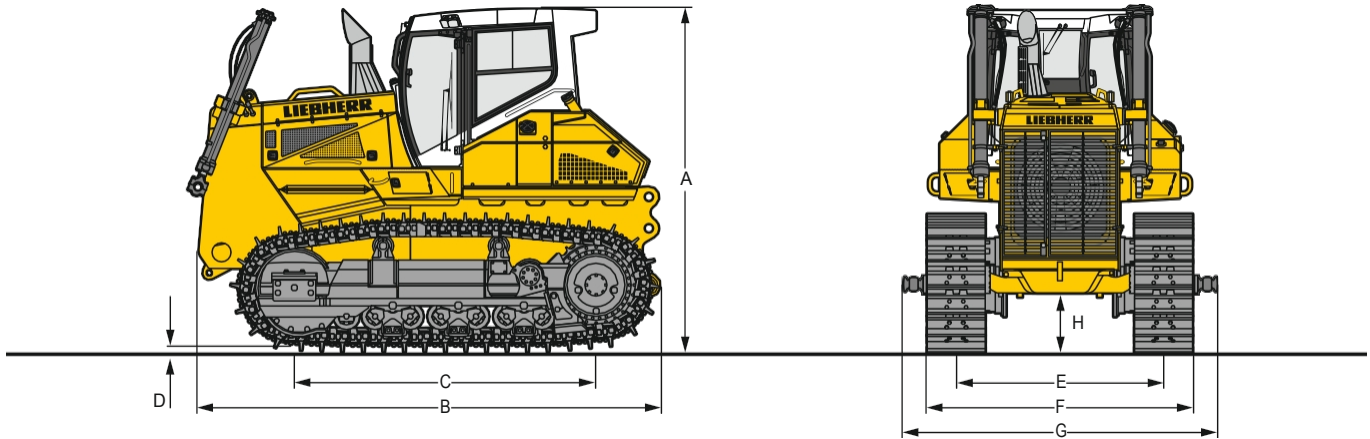
Traction group LGP, on each side	26 l
The traction group is standard, on each side	20 l
(DEF) Tank	80 l
Hydraulic tank	129 l
Fuel tank	660 l
Cooling system	55 l
Engine oil with filter	43 l
Pump gearbox	8,5 l

Traction

Maximum	592 kN
At 1.5 km/h	522 kN
at 3.0 km/h	261 kN
at 6.0 km/h	133 kN
at 9.0 km/h	89 kN



Dimensions

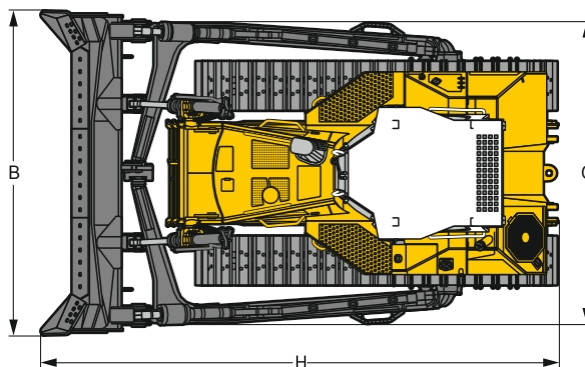
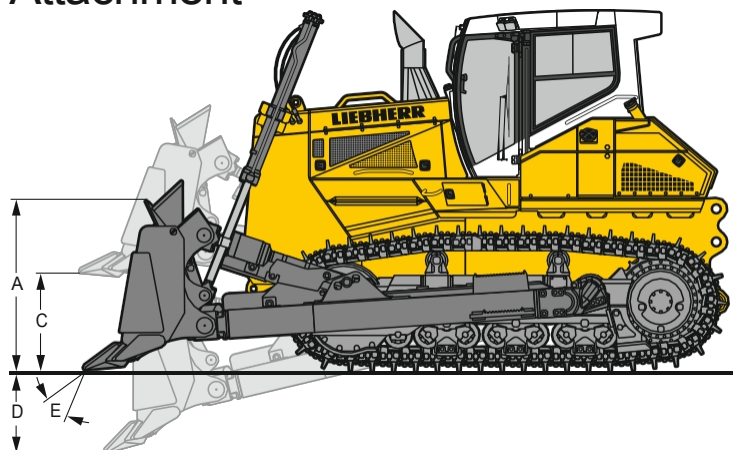


Dimensions

Sub-team		Standard Rigid Chassis	Standard Bogie Suspension	Standard Double Bogie Suspension	LPG Rigid Chassis
A	Cabin top height	mm	3.610	3.619	3.610
B	Total length without attachments	mm	4.885	4.885	4.885
C	Wheelbase	mm	3.174	3.249	3.174
D	Pallet claw height	mm	83	83	83
H	Distance to ground	mm	635	644	635
E	Distance to pallet centers	mm	2.180	2.180	2.430
G	Width over ball shaft	mm	3.145	3.145	3.575
F	Track shoes 560 mm				
	Width	mm	2.740	2.740	2.740
	Shipping weight ¹⁾	kg	29.106	30.033	31.067
F	Track shoes 610 mm				
	Width	mm	2.790	2.790	2.790
	Shipping weight ¹⁾	kg	29.346	30.273	31.307
F	Track shoes 711 mm				
	Width	mm	2.891	2.891	2.891
	Shipping weight ¹⁾	kg	29.823	30.750	31.784
F	Track shoes 914 mm				
	Width	mm	-	-	-
	Shipping weight ¹⁾	kg	-	-	3.344
F	Track shoes 965 mm				
	Width	mm	-	-	-
	Shipping weight ¹⁾	kg	-	-	3.395

¹⁾Lubricants and operating agents, including 20% fuel, ROPS/FOPS cab.

Front Attachment



Semi-U blade

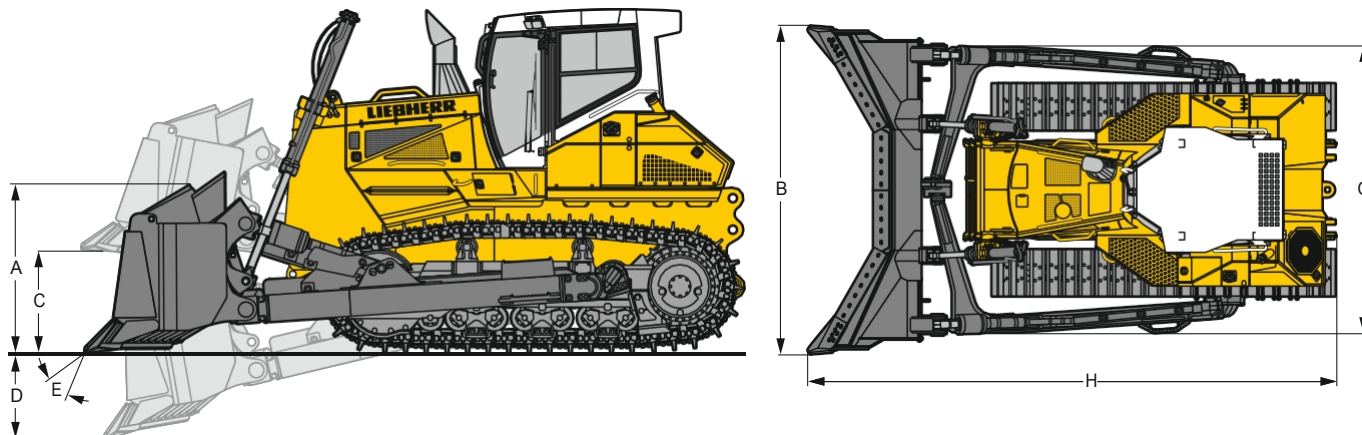
Bottom Team		Standard Rigid Chassis	Standard Bogie Suspension	Standard Double Bogie Suspansi	LPG Rigid Chassis
Blade capacity, ISO 9246	m ³	8,92		8,92	9,46
A Blade height	mm	1.650		1.650	1.600
B Blade width	mm	4.044		4.044	4.465
C Lifting height ³⁾	mm	1.372		1.381	1.403
D ³⁾ Excavation depth	mm	570		561	563
E Cutting angle adjustment		10°		10°	²⁾
Slope path max.	mm	993		993	481
G Width over push frame	mm	3.767		3.767	4.193
Y Total length	mm	6.449		6.449	6.452
Pallet shoes width 560 mm					
Operating weight ¹⁾	kg	35.388	36.315	37.349	-
Ground contact pressure ¹⁾	kg/cm ²	0,99	1,02	1,05	-
Pallet shoes width 610 mm					
Operating weight ¹⁾	kg	35.628	36.555	37.589	-
Ground contact pressure ¹⁾	kg/cm ²	0,92	0,94	0,97	-
Track shoes width 711 mm					
Operating weight ¹⁾	kg	36.105	37.032	38.066	-
Ground contact pressure ¹⁾	kg/cm ²	0,80	0,82	0,84	-
Track shoes width 914 mm					
Operating weight ¹⁾	mm	-	-	-	37.170
Ground contact pressure ¹⁾	kg	-	-	-	0,64
Track shoes width 965 mm					
Operating weight ¹⁾	mm	-	-	-	37.410
Ground contact pressure ¹⁾	kg	-	-	-	0,61

¹⁾ Including lubricants and operating agents, 100% fuel, ROPS/FOPS cab, semi-U blade, driver.

²⁾ Mechanical cutting angle adjustment.

³⁾ The specified dimensions are valid when the machine stands on the pallet shoes.

Front Attachment



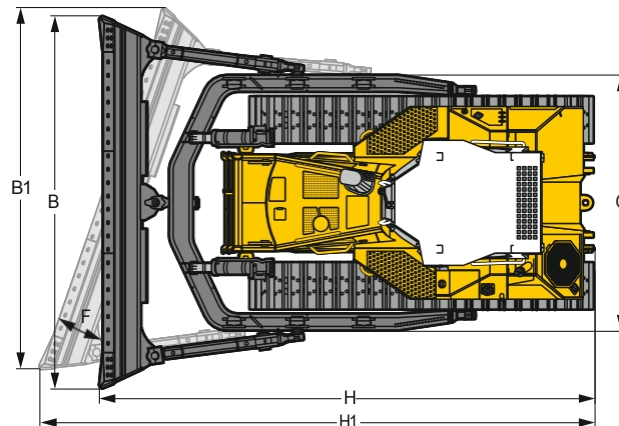
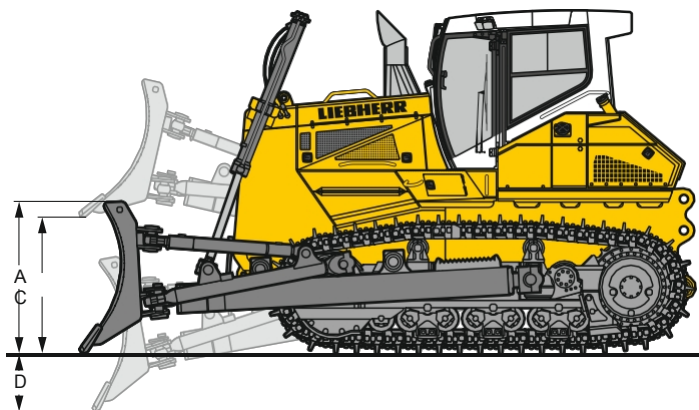
U knife

Bottom Team		Standard Rigid Chassis	Standard Bogie Suspension	Standard Double Bogie Suspension
Blade capacity, ISO 9246	m ³	11,8	11,8	11,8
A Blade height	mm	1.700	1.700	1.700
B Blade width	mm	4.281	4.281	4.281
C Lifting height ²⁾	mm	1.361	1.370	1.370
D Excavation depth ²⁾	mm	565	556	556
E Cutting angle adjustment		10°	10°	10°
Slope path max.	mm	1.052	1.052	1.052
G Width over push frame	mm	3.767	3.767	3.767
Y Total length	mm	6.872	6.872	6.872
Pallet shoes width 560 mm				
Operating weight ¹⁾	kg	35.358	36.285	37.319
Ground contact pressure ¹⁾	kg/cm ²	0,99	1,02	1,05
Pallet shoes width 610 mm				
Operating weight ¹⁾	kg	35.598	36.525	37.559
Ground contact pressure ¹⁾	kg/cm ²	0,92	0,94	0,97
Track shoes width 711 mm				
Operating weight ¹⁾	kg	35.075	37.002	38.036
Ground contact pressure ¹⁾	kg/cm ²	0,80	0,82	0,84

¹⁾ Including lubricants and operating agents, 100% fuel, ROPS/FOPS cab, U blade, driver.

²⁾ The specified dimensions are valid when the machine stands on the pallet shoes.

Front Attachment



Angled Blade

Bottom Team		Standard Rigid Chassis	Standard Bogie Suspension	Standard Double Bogie Suspension
Blade capacity, ISO 9246	m ³	4,97	4,97	4,97
A Blade height	mm	1.160	1.160	1.160
B Blade width	mm	4.990	4.990	4.990
B1 Blade width, angled	mm	4.472	4.472	4.472
C Lifting height	mm	1.447	1.447	1.456
D Excavation depth	mm	662	662	653
F Blade angle adjustment		24°	24°	24°
Max. blade inclination	mm	753	753	753
G Width over push frame	mm	3.688	3.688	3.688
H Overall length, with blade straight	mm	6.536	6.536	6.536
H1 Total length, with the blade open	mm	7.470	7.470	7.470
Track shoes width 560 mm / 22"				
Operating weight ¹⁾	kg	35.180	36.107	37.141
Pressure applied to the ground ¹⁾	kg/cm ²	0,98	1,01	1,02
Width of pallet pads 610 mm / 24"				
Operating weight ¹⁾	kg	35.420	36.347	37.381
Pressure applied to the ground ¹⁾	kg/cm ²	0,91	0,93	0,94
Width of pallet pads 711 mm / 28"				
Operating weight ¹⁾	kg	35.897	36.824	37.858
Pressure applied to the ground ¹⁾	kg/cm ²	0,79	0,82	0,82

¹⁾Includes coolant and oils, 20% fuel, ROPS/FOPS cab, operator, mechanical angle blade.

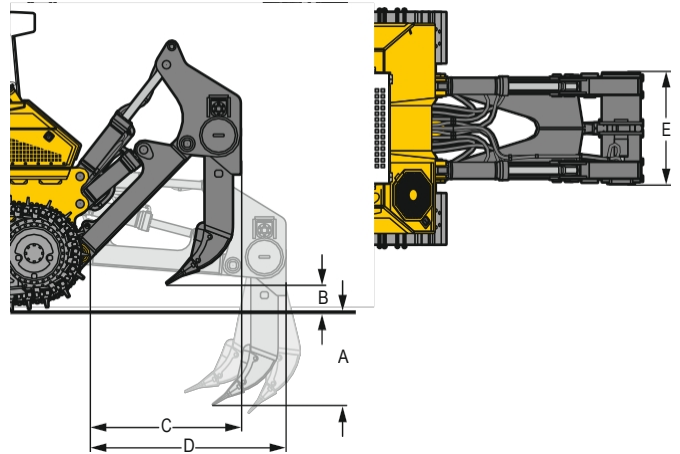
Attachment Rear



Single Pickaxe Ripper

Parallel type		Hydraulic adjustable plunge-lifting	
A	Breakout depth (max. / min.)	mm	1.203 / 423
B	Lifting height (max. / min.)	mm	1.040 / 260
C	Length, raised ripper	mm	1.820
D	Length, lowered ripper	mm	2.373
E	Beam width	mm	1.370
F	Digging distance	mm	-
	Max. cutting angle setting		31°
	Max. excavation power	kN	123,9
	Max. breakout force	kN	208,8
	Weight	kg	3.638

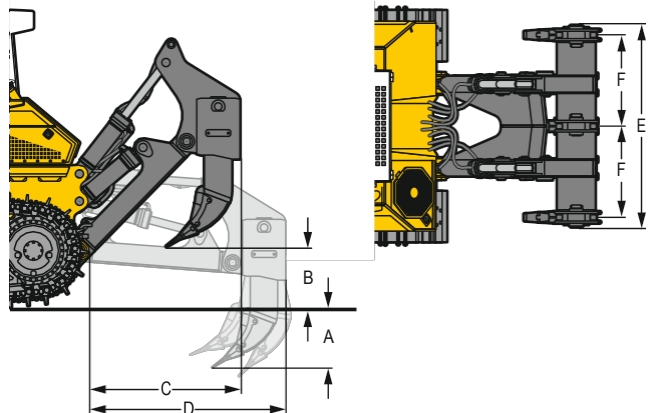
The specified dimensions apply when the machine stands on the pallet shoes.



3 Digging Ripper

Parallel type		Hydraulic adjustable plunge-lifting	
A	Breakout depth (max. / min.)	mm	796 / 481
B	Lifting height (max. / min.)	mm	982 / 667
C	Length, raised ripper	mm	1.820
D	Length, lowered ripper	mm	2.373
E	Beam width	mm	2.434
F	Digging distance	mm	1.100
	Max. cutting angle setting		31°
	Max. excavation power	kN	131,8
	Max. breakout force	kN	208,8
	Weight	kg	4.821

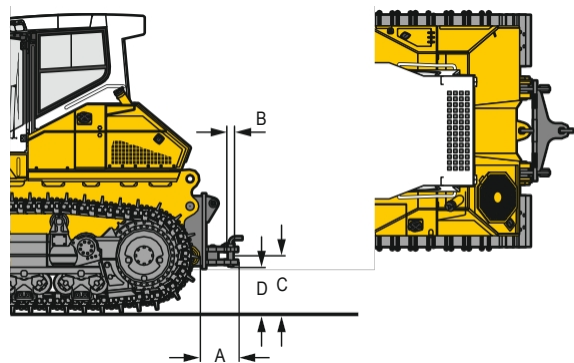
The specified dimensions apply when the machine stands on the pallet shoes.



Tensile Assembly

		fixed	
A	Additional length	mm	463
B	Stub diameter	mm	60
C	Hook height	mm	629
D	Distance to ground	mm	506
	Mouth width	mm	105
	Weight	kg	576

The specified dimensions apply when the machine stands on the pallet shoes.



Equipment



Main device

Tow hook on the back	-
Forestry equipment	+
Chip handling equipment	1)
Cold weather equipment	+
Coal works equipment	+
Waste site works equipment	+
Automatic speed reduction	+
Automatic engine shutdown	+
Automatic blade stabilization + tilt adjustment	+
Battery box lockable	-
Engine area lighting	-
Electric tank filling pump	+
Ceiling-mounted Leveling system	+
Urea tank lockable	+
Fuel prefilter with water separator	-
Fuel prefilter with heated water separator	+
Wide cavity radiator	-
Radiator protection can be rotated	-
LiDAT - data transfer system	-
Liebherr diesel engine exhaust gas class V / Tier 4f	-
Liebherr hydraulic oil, biodegradable	+
Rotatable fan, at the back	-
Rotatable fan, front	+
Fan, reversible	+
Hydraulic fan drive	-
Air filter pre-separator Sy-Klone	+
Air filter pre-separator Top Air	+
Engine area doors, lockable	-
Special paint	+
Shovel with handle	+
Dry air filter, 2-stage, pre-filtered	-
Dry air filter with automatic dust separator	+
Binding eye, at the back	+
Binding eye, in front	-
Machine control front equipment	1)
Toolkit basic scope	-
Toolkit full coverage	+
Splice handle on the step plate	-



Working hydraulics

Automatic lifting of the rear ripper in parking position	-
Electronic pre-control of the working hydraulics	-
Hydraulic cutting angle adjustment	+
Rear ripper hydraulic mounting set	+
Rope winch hydraulic assembly set	+
Load sensing adjustment pump	-
Return filter in the tank	-
Blade vibration function	-
Blade quick lowering function	-
Blade floating position	-
Control block for 2 loops	-



Drive drive

3 adjustable speed ranges	-
Automatic parking brake	-
Electronic motor load protection	-
Driving hydraulics joystick segmented	+
Driving hydraulics joystick proportional	-
Hydrostatic driving drive	-
Inching brake pedal	-
Machine operation approval switch	-
Emergency shutdown button	-
Planetary traction groups	-
Seat contact switch	-



Driver's cab

Air-conditioned glove box	-
Mesh pockets	+
Armrests are 3D adjustable	-
Entrance and exit lighting	+
Touch-controlled color display	-
Pressure ventilation	-
Comfortable driver's seat, air suspension, seat heating	-
Premium driver's seat with air suspension, seat heating and cooling	+
Fire extinguisher	+
Foot rest in front console	+
Noise-isolating cabin beds	-
LED interior lighting	-
Joystick can be adjusted in height	-
Tilttable cabin	-
Clothes hook	-
Automatic air conditioning	-
Radio	+
Radio installation site ready	+
ROPS / FOPS integrated	-
Reverse view camera	+
Mirrors on the outside	+
Inside rearview mirror	-
Windshield washer	-
Wipers on front, rear and doors, with time interval function	-
Sliding glass on the left	+
Sliding glass on the right	+
Protective grille for rear window	+
Safety glass	-
Sun roll, in front	+
Dust filter overpressure system	+
Receptacle 12 V + 24 V	-

- = Standard

+ = Option

1) Available upon request from the sales representative

Equipment



Electrical equipment

All headlights in LED construction style	+
Working lights at the rear above the cab, 2 pcs.	-
Working lights at the front above the cab, 4 pcs.	-
Working headlight per stroke cylinder, 1 piece	-
Battery main switch	-
Battery main switch, lockable	+
Cold start batteries, 2 pcs	-
Cabinet voltage 24 V	-
Audible reversing warning	+
Audible and visual reversing warning device	+
Reversing warning device with broadband signal	+
Reversing warning device with broadband signal and visual reversing warning	+
Warning lamp	+
Horn	-
Immobilizer, electronic	+
Additional headlights at the rear above the cab, 2 pcs.	+
Additional headlamp for rear ripper, 1 piece	+
Additional headlight per stroke cylinder, 1 piece	+



Movement assembly

Trapezoidal hole track shoes ²⁾	+
Heavy duty track shoes	-
Closed motion assembly frame	-
Bolted drive gear units	-
Segmented pallet end ring	-
Pallets greased with grease	-
Pallet guide centered	+
Track guide front and rear	-
Uninterrupted pallet protection	+
Movement assembly standard	+
Movement assembly LGP	+
Fixed pallet roller motion assembly	-
Oscillating pallet roller motion assembly	+
Travel assembly with guide wheel oscillation and double oscillating pallet rollers	+
Recessed drive gear units	+



Front equipment

Attachable grill for knife	+
Mechanical reversible blade	+
Semi-U blade	+
U knife	+
Overflow plate for knife	+
Thrust frame wear plates	+
Semi-U blade wear sheets	+



Rear equipment

Mounting plate for foreign devices	+
Fixed trailer towing device	+
Rear counterweight (4,000 kg)	+
Rear ripper 1 pickaxe, hydraulic stud puller	+
Rear ripper with 3 picks	+
Wire rope hoist	+

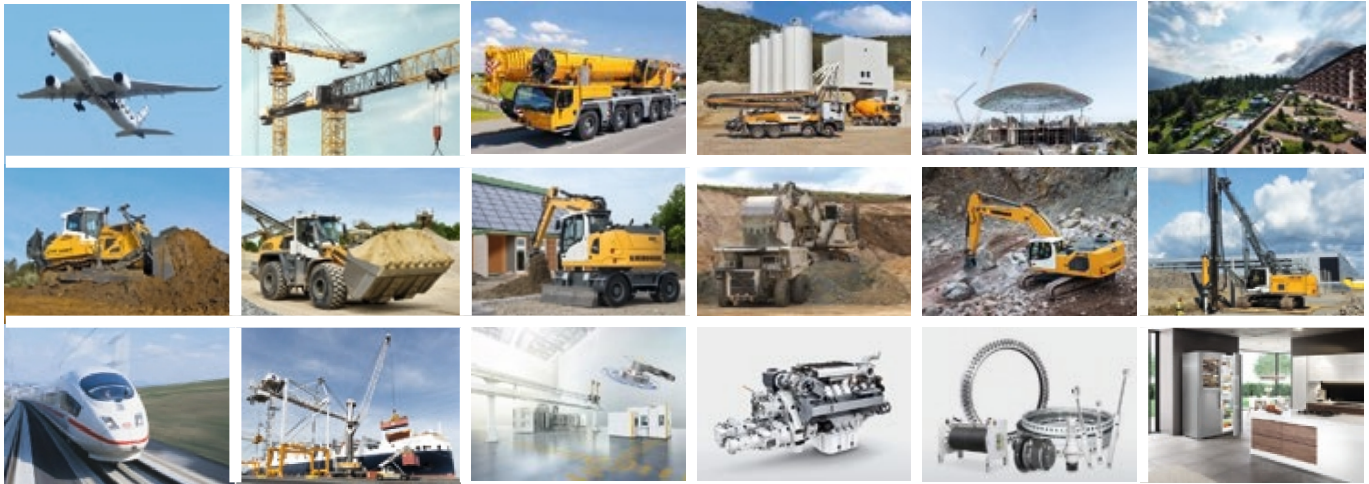
- = Standard

+ = Option

²⁾ Available pallet shoe width is available on request from the sales representative

Foreign fabricated equipment and fittings may not be installed or added without prior agreement with Liebherr.

Liebherr Group of Companies



Wide Product Range

The Liebherr Group of Companies is one of the world's leading manufacturers of construction equipment. In many different areas, Liebherr's user-oriented products and services are appreciated. This includes refrigerators and freezers, aviation and rail vehicle equipment, machine tools, harbor equipment and ship cranes.

Unmatched Customer Benefit

A wide range of models is offered in all product segments, with many different equipment options. With a reputation for technological maturity and superior quality, Liebherr products are extremely advantageous in practical application.

Technological Superiority

In order to meet the high quality expectations for its products, Liebherr attaches great importance to the availability of core technologies. For this reason, all key components used in construction equipment, such as drive and control elements, are manufactured in the company's in-house research and development and production units.

Global and Independent

Founded in 1949 by Hans Liebherr, Liebherr has grown from a family-owned business to a group of around 48,000 employees in more than 140 companies operating on all continents. Liebherr-International AG, the Group's holding center in Bulle (Switzerland), is wholly owned by the Liebherr family.

www.liebherr.com