
R 992 Litronic

LIEBHERR

Crawler excavator

**Generation**

6.2

Engine

420 kW / 571 HP

Stage V

Operating weight

Backhoe: 85,800–96,500 kg

Shovel: 91,500–93,300 kg

Bucket capacity

Backhoe: 2.00–6.80 m³

Shovel: 5.10–6.00 m³

Experience progress: R 992

Equipment

- Wide choice of backhoe front boom and stick configurations
- Welded structure with cast steel components for improved stress-resistance and longer service life
- Safety check valves to prevent boom and stick cylinder pipes from bursting, with integrated regeneration system for lower fuel consumption

Buckets

- Different levels of protection to suit different areas of application:
 - Standard for loose, non-abrasive materials
 - HD for hard-to-break, moderately abrasive materials
 - HDV for highly abrasive materials
- Different blade designs:
 - straight (for earth-moving and grading)
 - semi-delta (for hard-to-break, hard-to-extract materials)
 - delta (for compacted or slightly cracked materials)



New functions / options

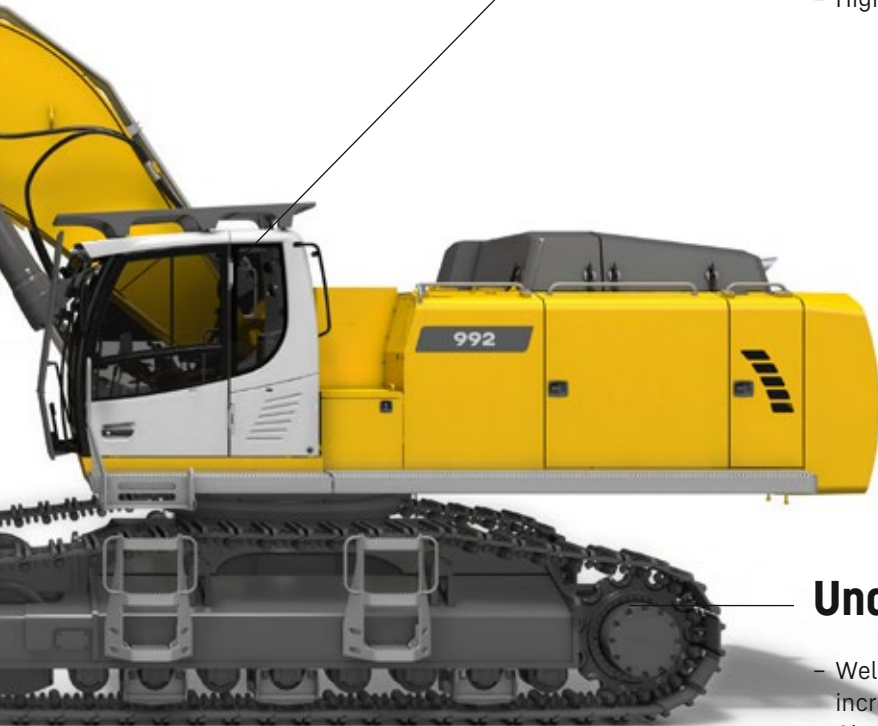
- **Liebherr Power Efficiency – Engine Control**
Up to 10% lower fuel consumption
- **Bucket Fill Assist**
Automatic bucket-filling cycle for increased productivity
- **Modetronic**
Customisable operating modes for optimum adjustment of work cycles to each type of application

Comfort

- Quiet, comfortable cab, the largest and most spacious in its category
- Seat with heater and pneumatic multi-directional shock absorption (air conditioning optional)
- High-resolution 9" color touchscreen

Undercarriage

- Welded undercarriage with rigid X profile for increased robustness
- Chamfered rack pads with double grouser for more manoeuvrability on difficult terrain
- Moulded two-tooth sprocket for longer service life
- Track rollers on double bearings for increased reliability and durability over time
- Stronger travel motor housing protection for improved resistance to wear and tear from hard, abrasive rocks



Experience progress: R 992 Shovel

Safety

- Completely unobstructed panoramic view, plus rear-view and side-view monitoring cameras for increased safety
- Retractable console for safe and easy access to the cab
- Impact-resistant windscreen and roof glass panel
- Cab riser for the best possible view of the loading area (optional)

Equipment

- Cast steel parts
- Shovel attachment with parallel drivetrain for powerful, even penetration
- Bucket cylinders positioned under the equipment for better protection against the elements
- Safety valves on boom cylinder for pipe burst protection

Buckets

- The front shovel is the perfect shape for digging deep into the material and for a high filling rate
- Several levels of protection for the front shovel, depending on requirements:
 - Type I: Non-abrasive materials, such as limestone without flint
 - Type II: Shot material, or easily breakable rock (classification 3 to 4 according to DIN 18300)
 - Type III: Highly abrasive materials, such as rocks with a high silica content, sandstone, granite, etc.
- Different design of blades: straight blade (loading), semi-delta (compacted materials), delta (direct excavation)
- Front shovel with semi-automatic flap closure, ideally shaped for optimum material penetration and high filling rate





Cab

- Comfortable and ergonomic design
- 9" high-resolution colour touch screen
- Wider for more comfort
- Impact resistant windows at the front and in the roof as standard
- Optional FOPS and FGPS protection guards
- Operator's cab with a fixed riser for a full view over the work area

Maintenance

- Access platform for engine and hydraulic control block compartments to enable safe, ergonomic maintenance work
- Left and right catwalks as standard; wide catwalks with hand rail optional
- Automatic central lubrication system as standard
- Shut-off valve on hydraulic tank outlet as standard

Technical data



Engine

Rating per ISO 9249	420 kW (571 HP) at 1,800 RPM
Torque	2,939 Nm at 1,300 RPM
Model	Liebherr D9508 A7 SCR
Type	8 cylinder V engine
Bore	128 mm
Stroke	157 mm
Displacement	16.16 l
Engine operation	4-stroke diesel Common-Rail
Exhaust gas treatment	Stage V DOC + DPF + SCR Passive regeneration by thermo management
Cooling system	Water-cooled and integrated motor oil cooler, after-cooled and fuel cooled
Air cleaner	Dry-type air cleaner with pre-cleaner, primary and safety elements
Fuel tank	1,498 l
Urea tank	180 l
Electrical system	
Voltage	24 V
Batteries	2 x 180 Ah / 12 V
Starter	24 V / 7.8 kW
Alternator	Three-phase current 28 V / 140 A
Engine idling	Sensor controlled
Motor management	Connection to the integrated excavator system controlling via CAN-BUS to the economical utilisation of the service that is available



Hydraulic controls

Power distribution	Via control valves in single block with integrated safety valves
Flow summation	To boom and stick
Closed-loop circuit	For uppercarriage swing drive
Servo circuit	Electro-hydraulic control
Equipment and swing	Proportional via joystick levers
Travel	- Proportional control via foot pedals or removable levers - Speed pre-selection
Additional functions	Proportional regulation via foot pedals or mini-joystick



Hydraulic system

Hydraulic pumps	
For equipment and travel drive	Two Liebherr variable displacement, swashplate pumps
Max. flow	2 x 498 l/min.
Max. pressure	350 bar
For swing drive	Reversible, variable displacement, swashplate pump, closed-loop circuit
Max. flow	315 l/min.
Max. pressure	350 bar
Pump regulation	Electro-hydraulic with electronic engine speed sensing regulation, minimum flow adjustment, flow compensation, high flow
Hydraulic tank	536 l
Hydraulic system	1,134 l
Filtration	2 full flow filters in return line with integrated fine filter area (5 µm)
Cooling system	Cooler for transmission pump oil and cooler for oil and condenser of air-conditioning with hydrostatically controlled fan drives
MODE selection	Adjustment of engine and hydraulic performance via a mode pre-selector to match application, e.g. for especially economical and environmentally friendly operation or for maximum digging performance and heavy-duty jobs
RPM adjustment	Stepless adjustment of engine output via RPM at each selected mode
Tool Control	20 pre-adjustable pump flows and pressures for add-on attachments



Swing drive

Drive	Liebherr swashplate motor with integrated brake valve
Transmission	Liebherr compact planetary reduction gears
Swing ring	Liebherr, sealed race ball bearing swing ring, internal teeth
Swing speed	0-5.9 RPM stepless
Swing torque	295 kNm
Holding brake	Wet multi-disc (spring applied, pressure released)


Cab

Cab	LED work headlights integrated in the ceiling, a door with a sliding window (can be opened on both sides), large storing box and several stowing possibilities, shock-absorbing suspension, sound damping insulating, tinted laminated safety glass, separate window shades for the sunroof window and windscreen, cigarette lighter and 12 V plug, storage bins, lunchbox, cup holder
Operator's seat	Liebherr-Comfort seat, airsprung with automatic weight adjustment, vertical and longitudinal seat damping including consoles and joysticks. Seat and armrests adjustable separately and in combination (adjustable in length, height and inclination), seat heating as standard
Arm consoles	Oscillating consoles with seat, tiltable console left
Operation and displays	Large high-resolution operating unit, intuitive, colour display with touchscreen, video-compatible, numerous setting, control and monitoring options, e.g. air conditioning control, fuel consumption, machine and attachment parameters
Air-conditioning	Automatic air-conditioning, recirculated air function, fast de-icing and demisting at the press of a button, air vents can be operated via a menu. Recirculated air and fresh air filters can be easily replaced and are accessible from the outside. Heating-cooling unit, designed for extreme outside temperatures, sensors for solar radiation, inside and outside temperatures The air conditioning system contains fluorinated greenhouse gases
Refrigerant	R134a
Global warming potential	1,430
Quantity at 25 °C*	1,260 g
CO ₂ equivalent	1.80 t
Vibration emission**	
Hand / arm vibrations	< 2.5 m/s ² , according with ISO 5349-1:2001
Whole-body vibrations	< 0.5 m/s ²
Measuring inaccuracy	According with standard EN 12096:1997
Noise emission	
ISO 6396	72 dB(A) = L _{PA} (inside cab)
2000/14/EC	109 dB(A) = L _{WA} (surround noise)


Undercarriage

Versions	
HD	Gauge 3,600 mm
LC-V	Gauge 3,590 mm
Drive	Liebherr swashplate motor with brake valves on both sides
Transmission	Liebherr compact planetary reduction gear
Maximum travel speed	4.3 km/h
Drawbar pull on crawler	568 kN
Track components	D9G, maintenance-free
Track rollers / Carrier rollers	8 / 2 (HD) 9 / 3 (LC-V)
Tracks	Sealed and greased
Track pads	Double grouser
Holding brake	Wet multi-disc (spring applied, pressure released)
Brake valves	Outside the travel motor
Lashing eyes	Integrated

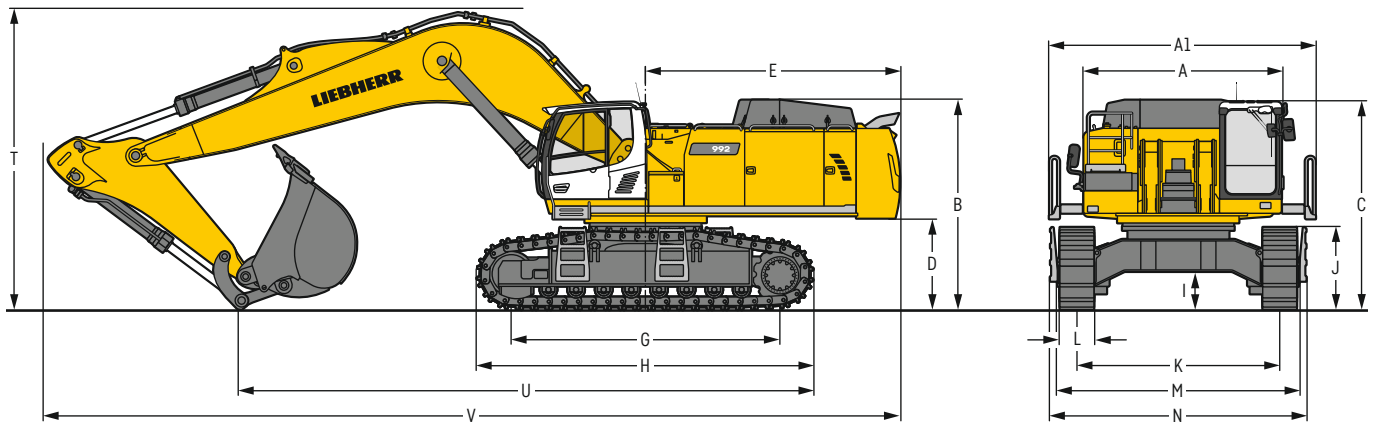
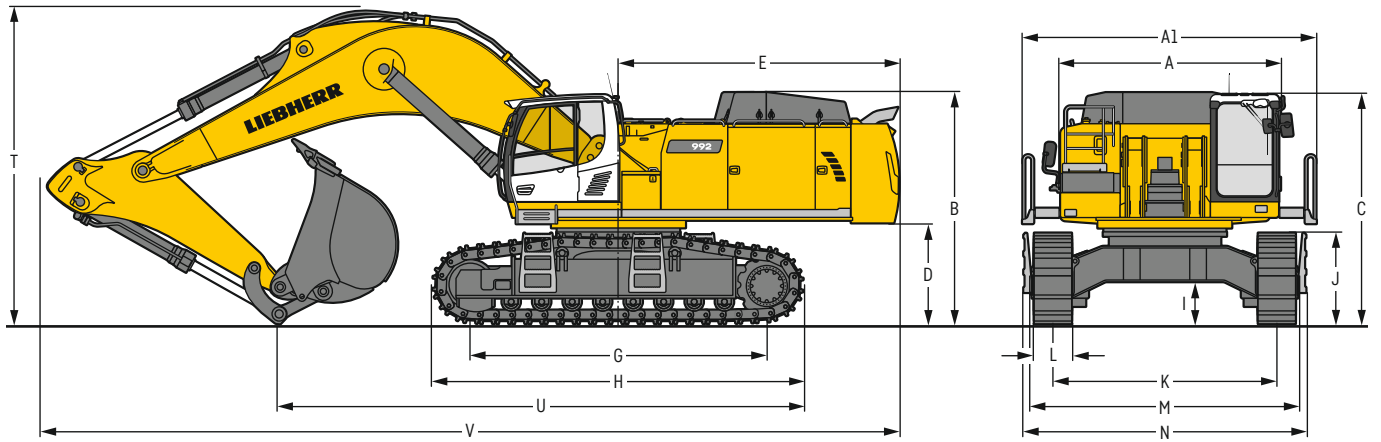

Equipment

Type	Combination of resistant steel plates and cast steel components
Hydraulic cylinders	Liebherr cylinders with seal and guidance systems
Bearings	Sealed, low maintenance
Lubrication	Automatic central lubrication system (except link and tilt geometry)
Hydraulic connections	Pipes and hoses equipped with SAE split-flange connections
Buckets	Standard equipped with Liebherr tooth system

* Valid for standard machine without operator's cab elevation and without height adjustable cab

** For the risk assessment according to 2002/44/EC see ISO/TR 25398:2006

Dimensions



	HD	mm			LC-V	mm			
A	Upper-carriage width			3,565				3,565	
A1	Upper-carriage width with catwalks			4,730				4,730	
B	Upper-carriage height			3,725				3,865	
C	Cab height			3,695				3,835	
D	Counterweight ground clearance			1,620				1,755	
E	Rear-end length			4,515				4,515	
G	Wheelbase			4,770				5,160	
H	Undercarriage length			5,960				6,335	
I	Undercarriage ground clearance			690				950	
J	Track height			1,460				1,495	
K	Track gauge			3,600				2,750 / 3,590*	
L	Track pad width		500	600	750		500	600	750
M	Width over tracks		4,380	4,380	4,380		3,490 / 4,330*	3,490 / 4,330*	3,500 / 4,340*
N	Width over steps		5,010	5,010	5,010		4,045 / 4,885*	4,045 / 4,885*	4,045 / 4,885*

* work position

	Stick length m	Mono boom 7.20 m direct mounting		Mono boom 8.60 m direct mounting			Mono boom 10.50 m direct mounting		
		HD mm	LC-V mm	HD mm	LC-V mm	LC-V mm	HD mm	LC-V mm	LC-V mm
T	Boom height	2.90	5,100	5,150	-	-	-	-	-
		3.30	5,250	5,350	5,450	5,500	-	-	-
		3.80	5,550	5,600	5,600	5,700	5,900	6,000	-
		4.70	6,050	6,150	6,000	6,000	6,100	6,200	-
		5.80	-	-	6,800	6,750	6,800	6,800	-
U	Length on ground	2.90	8,450	8,600	-	-	-	-	-
		3.30	8,200	8,350	9,950	10,100	-	-	-
		3.80	8,100	8,200	9,850	10,000	11,900	12,050	-
		4.70	7,950	8,050	9,650	9,800	11,700	11,850	-
		5.80	-	-	9,650	9,750	11,550	11,700	-
V	Overall length	2.90	13,800	13,800	-	-	-	-	-
		3.30	13,500	13,500	14,900	14,900	-	-	-
		3.80	13,400	13,450	14,750	14,750	16,650	16,650	-
		4.70	13,150	13,250	14,550	14,550	16,450	16,500	-
		5.80	-	-	14,150	14,250	16,150	16,250	-
Bucket			5.20 m ³		3.60 m ³		2.60 m ³		

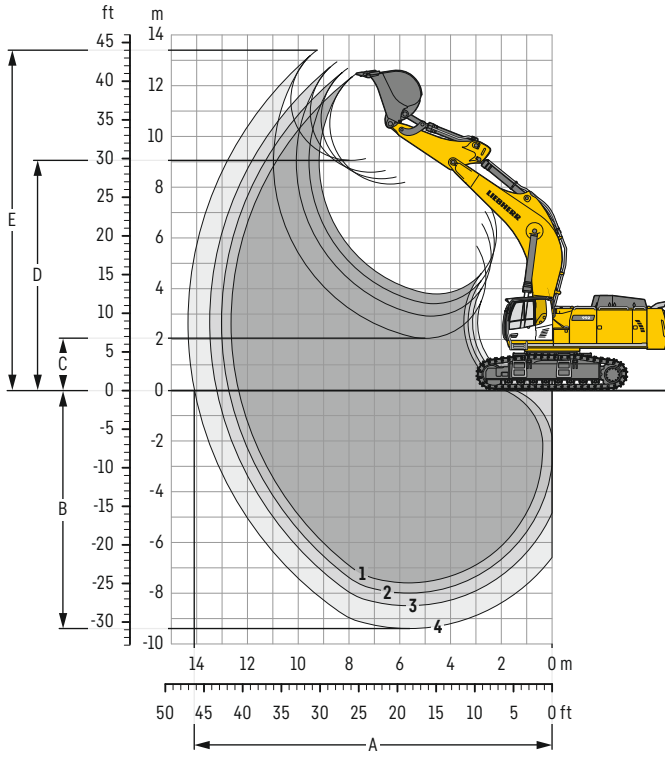
Transport dimensions

removable elements disassembled

	Undercarriage / Stick m	Mono boom 7.20 m		Mono boom 8.60 m		Mono boom 10.50 m	
		HD mm	LC-V mm	HD mm	LC-V mm	HD mm	LC-V mm
Transport width		4,730		4,730		4,730	
Transport length	2.90	13,800	13,800	-	-	-	-
	3.30	13,500	13,500	14,900	14,900	-	-
	3.80	13,400	13,450	14,750	14,750	16,650	16,650
	4.70	13,150	13,250	14,550	14,550	16,450	16,500
	5.80	-	-	14,150	14,250	16,150	16,250
Transport height	2.90	5,100	5,150	-	-	-	-
	3.30	5,250	5,350	5,450	5,500	-	-
	3.80	5,550	5,600	5,600	5,700	5,900	6,000
	4.70	6,050	6,150	6,000	6,000	6,100	6,200
	5.80	-	-	6,800	6,750	6,800	6,800
Bucket			5.20 m ³		3.60 m ³		2.60 m ³

Backhoe bucket

with mono boom 7.20 m



Digging envelope

without quick coupler	1	2	3	4	
Stick length	m	2.90	3.30	3.80	4.70
A Max. reach at ground level	m	12.30	12.70	13.20	14.05
B Max. digging depth	m	7.45	7.85	8.35	9.25
C Min. dumping height	m	3.80	3.40	2.90	2.05
D Max. dumping height	m	8.25	8.50	8.75	9.20
E Max. cutting height	m	12.60	12.85	13.10	13.55

Forces

without quick coupler	1	2	3	4	
Stick digging force (ISO 6015)	kN	390	361	329	284
Bucket digging force (ISO 6015)	kN	485	485	485	485
Stick digging force (SAE J1179)	kN	374	347	317	276
Bucket digging force (SAE J1179)	kN	437	437	437	437

Operating weight and ground pressure

The operating weight includes the basic machine with counterweight 14.1t, mono boom 7.20 m, stick 2.90 m and bucket 5.20 m³ (4,650 kg).

Undercarriage		HD		
Pad width	mm	500	600	750
Weight	kg	85,800	86,600	87,700
Ground pressure	kg/cm ²	1.65	1.39	1.13

Undercarriage		LC-V		
Pad width	mm	500	600	750
Weight	kg	91,200	92,000	93,100
Ground pressure	kg/cm ²	1.64	1.38	1.12

The operating weight includes the basic machine with counterweight 16.0t, mono boom 7.20 m, stick 2.90 m and bucket 5.20 m³ (4,650 kg).

Undercarriage		HD		
Pad width	mm	500	600	750
Weight	kg	87,700	88,500	89,600
Ground pressure	kg/cm ²	1.69	1.43	1.17

Undercarriage		LC-V		
Pad width	mm	500	600	750
Weight	kg	93,100	93,900	95,000
Ground pressure	kg/cm ²	1.68	1.42	1.16

Buckets Machine stability per ISO 10567* (75% of tipping capacity)

Cutting width mm	Capacity ISO 7451 m ³	Weight kg	HD undercarriage (with track pads 600 mm)				LC-V undercarriage (with track pads 600 mm)				
			Stick length (m)				Stick length (m)				
			2.90	3.30	3.80	4.70	2.90	3.30	3.80	4.70	
with counterweight 14.1t											
STD ¹⁾	2,200	5.20	4,650	▲	▲	▲	▲	▲	▲	▲	■
	2,300	5.60	4,850	▲	▲	■	■	▲	▲	■	▲
	2,300	6.20	5,050	■	■	■	△	▲	■	▲	△
	2,500	6.80	5,400	▲	■	△	△	▲	▲	■	△
HD ²⁾	2,200	4.60	5,100	▲	▲	▲	▲	▲	▲	▲	■
	2,200	5.20	5,300	▲	▲	■	■	▲	▲	▲	▲
	2,300	5.60	5,550	▲	■	▲	△	▲	▲	■	■
	2,300	6.20	5,800	■	▲	■	△	▲	▲	▲	△
HDV ³⁾	2,000	4.20	5,600	▲	▲	▲	▲	▲	▲	▲	▲
	2,200	4.70	5,850	▲	▲	▲	▲	▲	▲	▲	▲
	2,200	5.20	6,250	▲	■	▲	△	▲	▲	■	■
	2,300	5.70	6,500	■	▲	■	△	▲	■	▲	△
with counterweight 16.0t											
STD ¹⁾	2,200	5.20	4,650	▲	▲	▲	■	▲	▲	▲	■
	2,300	5.60	4,850	▲	▲	▲	▲	▲	▲	▲	■
	2,300	6.20	5,050	▲	■	■	■	▲	▲	■	■
	2,500	6.80	5,400	■	▲	■	△	▲	▲	■	△
HD ²⁾	2,200	4.60	5,100	▲	▲	▲	▲	▲	▲	▲	▲
	2,200	5.20	5,300	▲	▲	▲	▲	▲	▲	▲	■
	2,300	5.60	5,550	▲	▲	■	■	▲	▲	▲	▲
	2,300	6.20	5,800	▲	■	▲	△	▲	▲	■	■
HDV ³⁾	2,000	4.20	5,600	▲	▲	▲	▲	▲	▲	▲	▲
	2,200	4.70	5,850	▲	▲	▲	■	▲	▲	▲	■
	2,200	5.20	6,250	▲	▲	■	■	▲	▲	▲	▲
	2,300	5.70	6,500	▲	■	▲	△	▲	▲	■	■

* Indicated loads are based on ISO 10567, at maximum reach, and may be swung 360° on firm and even ground

¹⁾ Standard bucket with Liebherr teeth Z 90

²⁾ HD bucket with Liebherr teeth Z 90

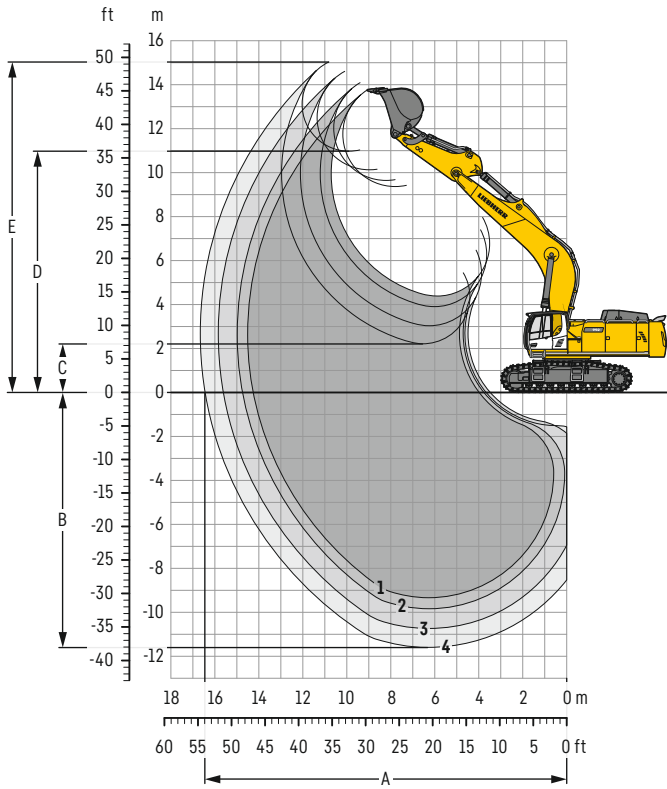
³⁾ HDV bucket with Liebherr teeth Z 90

Other buckets available upon request

Max. material weight ▲ = ≤ 2.0t/m³, ■ = ≤ 1.8t/m³, ▲ = ≤ 1.65t/m³, ■ = ≤ 1.5t/m³, △ = ≤ 1.2t/m³

Backhoe bucket

with mono boom 8.60 m



Digging envelope

without quick coupler		1	2	3	4
Stick length	m	3.30	3.80	4.70	5.80
A Max. reach at ground level	m	14.20	14.70	15.60	16.40
B Max. digging depth	m	9.20	9.70	10.60	11.45
C Min. dumping height	m	4.40	3.90	3.05	2.20
D Max. dumping height	m	9.50	9.80	10.30	11.10
E Max. cutting height	m	13.90	14.20	14.75	15.15

Forces

without quick coupler		1	2	3	4
Stick digging force (ISO 6015)	kN	361	329	284	249
Bucket digging force (ISO 6015)	kN	485	485	485	356
Stick digging force (SAE J1179)	kN	347	317	276	237
Bucket digging force (SAE J1179)	kN	437	437	437	315

Operating weight and ground pressure

The operating weight includes the basic machine with counterweight 14.1t, mono boom 8.60 m, stick 3.80 m and bucket 3.60 m³ (3,900 kg).

Undercarriage		HD		
Pad width	mm	500	600	750
Weight	kg	86,400	87,100	88,200
Ground pressure	kg/cm ²	1.67	1.40	1.14

Undercarriage		LC-V		
Pad width	mm	500	600	750
Weight	kg	91,700	92,500	93,600
Ground pressure	kg/cm ²	1.65	1.39	1.12

The operating weight includes the basic machine with counterweight 16.0t, mono boom 8.60 m, stick 3.80 m and bucket 3.60 m³ (3,900 kg).

Undercarriage		HD		
Pad width	mm	500	600	750
Weight	kg	88,300	89,000	90,100
Ground pressure	kg/cm ²	1.71	1.44	1.18

Undercarriage		LC-V		
Pad width	mm	500	600	750
Weight	kg	93,600	94,400	95,500
Ground pressure	kg/cm ²	1.69	1.43	1.16

Buckets Machine stability per ISO 10567* (75% of tipping capacity)

Cutting width mm	Capacity ISO 7451 m ³	Weight kg	HD undercarriage (with track pads 600 mm)				LC-V undercarriage (with track pads 600 mm)				
			Stick length (m)				Stick length (m)				
			3.30	3.80	4.70	5.80	3.30	3.80	4.70	5.80	
with counterweight 14.1t											
STD ¹⁾	1,800	3.60	3,900	▲	▲	▲	-	▲	▲	■	-
	2,000	4.10	4,100	▲	■	■	-	▲	■	▲	-
	2,200	4.60	4,450	▲	■	△	-	■	▲	△	-
	2,200	5.20	4,650	■	△	-	-	▲	△	△	-
	2,300	5.60	4,850	△	△	-	-	■	△	-	-
2,300	6.20	5,050	△	-	-	-	△	△	-	-	
HD ²⁾	1,800	3.60	4,350	▲	▲	▲	-	▲	▲	■	-
	2,000	4.10	4,700	■	▲	△	-	▲	■	■	-
	2,200	4.60	5,100	■	△	-	-	▲	■	△	-
	2,200	5.20	5,300	△	△	-	-	■	△	-	-
	2,300	5.60	5,550	△	-	-	-	△	△	-	-
HDV ³⁾	1,800	3.70	5,200	▲	■	△	-	▲	■	■	-
	2,000	4.20	5,600	▲	■	△	-	■	▲	△	-
	2,200	4.70	5,850	△	△	-	-	■	△	-	-
	2,200	5.20	6,250	△	-	-	-	△	△	-	-
	2,300	5.70	6,500	-	-	-	-	△	-	-	-
STD ⁴⁾	1,950	3.00	3,100	-	-	-	▲	-	-	-	▲
	2,150	3.50	3,350	-	-	-	▲	-	-	-	■
	1,950	4.00	3,600	-	-	-	△	-	-	-	■
	2,150	4.50	3,800	-	-	-	△	-	-	-	△
	2,250	5.00	3,950	-	-	-	-	-	-	-	△
HD ⁵⁾	1,750	2.50	3,600	-	-	-	▲	-	-	-	▲
	2,000	3.00	3,900	-	-	-	■	-	-	-	▲
	2,200	3.50	4,300	-	-	-	■	-	-	-	▲
	2,000	4.00	4,500	-	-	-	△	-	-	-	△
with counterweight 16.0t											
STD ¹⁾	1,800	3.60	3,900	▲	▲	■	-	▲	▲	▲	-
	2,000	4.10	4,100	▲	▲	▲	-	▲	▲	■	-
	2,200	4.60	4,450	■	▲	△	-	▲	■	■	-
	2,200	5.20	4,650	▲	■	△	-	■	▲	△	-
	2,300	5.60	4,850	■	△	-	-	▲	■	△	-
	2,300	6.20	5,050	△	△	-	-	△	△	-	-
2,500	6.80	5,400	△	-	-	-	△	-	-	-	
HD ²⁾	1,800	3.60	4,350	▲	▲	■	-	▲	▲	▲	-
	2,000	4.10	4,700	▲	■	■	-	▲	▲	▲	-
	2,200	4.60	5,100	■	▲	△	-	■	▲	△	-
	2,200	5.20	5,300	■	△	-	-	▲	■	△	-
	2,300	5.60	5,550	△	△	-	-	■	△	-	-
	2,300	6.20	5,800	△	-	-	-	△	△	-	-
HDV ³⁾	1,800	3.70	5,200	▲	▲	▲	-	▲	▲	■	-
	2,000	4.20	5,600	■	▲	△	-	▲	■	■	-
	2,200	4.70	5,850	▲	■	△	-	■	■	△	-
	2,200	5.20	6,250	△	△	-	-	■	△	-	-
	2,300	5.70	6,500	△	-	-	-	△	△	-	-
	2,150	3.50	3,350	-	-	-	■	-	-	-	▲
STD ⁴⁾	1,950	4.00	3,600	-	-	-	■	-	-	-	▲
	2,150	4.50	3,800	-	-	-	△	-	-	-	■
	2,250	5.00	3,950	-	-	-	△	-	-	-	△
	2,450	5.50	4,200	-	-	-	-	-	-	-	△
	2,000	3.00	3,900	-	-	-	▲	-	-	-	▲
	2,200	3.50	4,300	-	-	-	▲	-	-	-	■
HD ⁵⁾	2,000	4.00	4,500	-	-	-	△	-	-	-	■
	2,200	4.50	4,850	-	-	-	△	-	-	-	△

* Indicated loads are based on ISO 10567, at maximum reach, and may be swung 360° on firm and even ground

¹⁾ Standard bucket with Liebherr teeth Z 90

²⁾ HD bucket with Liebherr teeth Z 90

³⁾ HDV bucket with Liebherr teeth Z 90

⁴⁾ Standard bucket from R 966 Litronic with Liebherr teeth Z 70

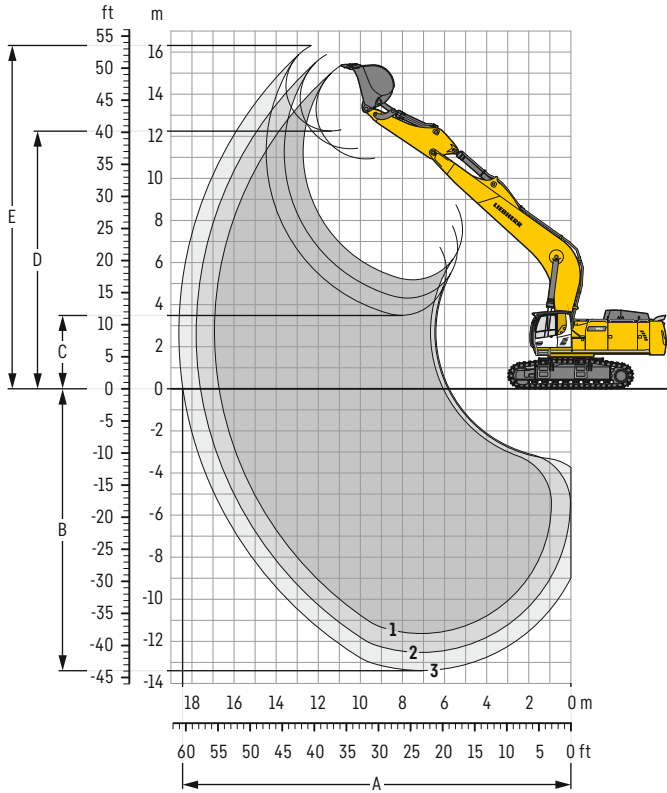
⁵⁾ HD bucket from R 966 Litronic with Liebherr teeth Z 90

Other buckets available upon request

Max. material weight ▲ = ≤ 2.0t/m³, ■ = ≤ 1.8t/m³, ▲ = ≤ 1.65t/m³, ■ = ≤ 1.5t/m³, △ = ≤ 1.2t/m³, - = not authorised

Backhoe bucket

with mono boom 10.50 m



Digging envelope

without quick coupler		1	2	3
Stick length	m	3.80	4.70	5.80
A Max. reach at ground level	m	16.70	17.55	18.40
B Max. digging depth	m	11.50	12.40	13.25
C Min. dumping height	m	5.20	4.30	3.50
D Max. dumping height	m	11.05	11.55	12.40
E Max. cutting height	m	15.50	16.00	16.45

Forces

without quick coupler		1	2	3
Stick digging force (ISO 6015)	kN	329	284	249
Bucket digging force (ISO 6015)	kN	485	485	356
Stick digging force (SAE J1179)	kN	317	276	237
Bucket digging force (SAE J1179)	kN	437	437	315

Operating weight and ground pressure

The operating weight includes the basic machine with counterweight 16.0t, mono boom 10.50 m, stick 4.70 m and bucket 2.60 m³ (3,400 kg).

Undercarriage		HD		
Pad width	mm	500	600	750
Weight	kg	89,200	90,000	91,100
Ground pressure	kg/cm ²	1.72	1.44	1.17

Undercarriage		LC-V		
Pad width	mm	500	600	750
Weight	kg	94,600	95,400	96,500
Ground pressure	kg/cm ²	1.70	1.42	1.15

Buckets Machine stability per ISO 10567* (75% of tipping capacity)

Cutting width mm	Capacity ISO 7451 m ³	Weight kg	HD undercarriage (with track pads 600 mm)			LC-V undercarriage (with track pads 600 mm)			
			Stick length (m)			Stick length (m)			
			3.80	4.70	5.80	3.80	4.70	5.80	
with counterweight 16.0t									
STD ¹⁾	1,450	2.60	3,400	▲	▲	-	▲	■	-
	1,800	3.60	3,900	△	-	-	■	△	-
	2,000	4.10	4,100	△	-	-	△	-	-
HD ²⁾	1,450	2.60	3,750	▲	■	-	▲	■	-
	1,800	3.60	4,350	△	-	-	△	△	-
	2,000	4.10	4,700	-	-	-	△	-	-
HDV ³⁾	1,800	3.70	5,200	-	-	-	△	-	-
STD ⁴⁾	1,400	2.00	2,500	-	-	▲	-	-	▲
	1,700	2.50	2,850	-	-	▲	-	-	■
	1,950	3.00	3,100	-	-	△	-	-	■
	2,150	3.50	3,350	-	-	-	-	-	△
HD ⁵⁾	1,450	2.00	3,100	-	-	▲	-	-	▲
	1,750	2.50	3,600	-	-	■	-	-	▲
	2,000	3.00	3,900	-	-	△	-	-	△

* Indicated loads are based on ISO 10567, at maximum reach, and may be swung 360° on firm and even ground

¹⁾ Standard bucket with Liebherr teeth Z 90

²⁾ HD bucket with Liebherr teeth Z 90

³⁾ HDV bucket with Liebherr teeth Z 90

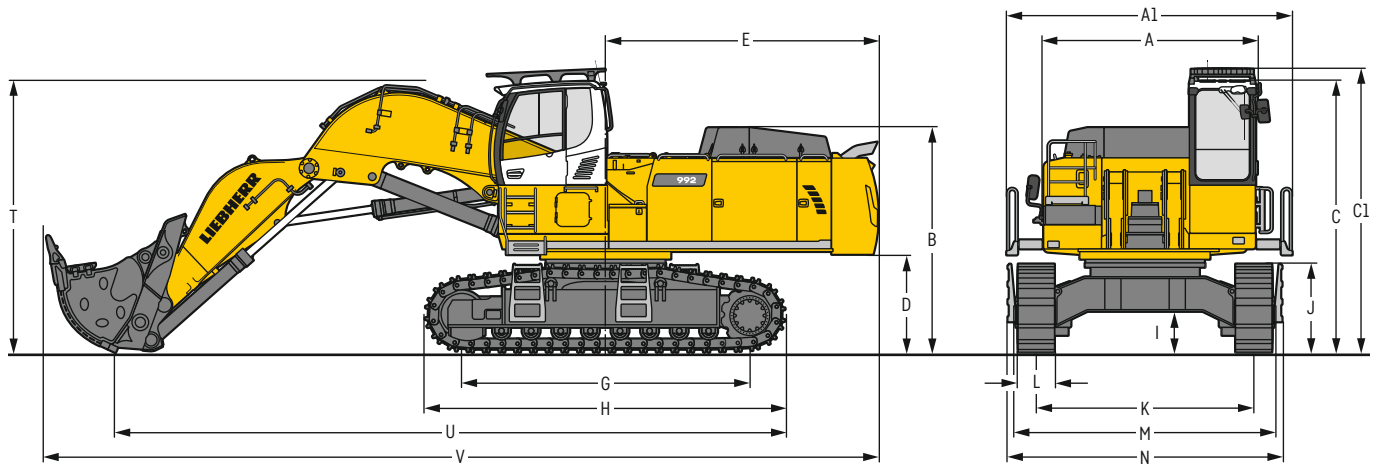
⁴⁾ Standard bucket from R 966 Litronic with Liebherr teeth Z 70

⁵⁾ HD bucket from R 966 Litronic with Liebherr teeth Z 90

Other buckets available upon request

Max. material weight ▲ = ≤ 2.0t/m³, ■ = ≤ 1.8t/m³, ▲ = ≤ 1.65t/m³, ■ = ≤ 1.5t/m³, △ = ≤ 1.2t/m³, - = not authorised

Dimensions front shovel



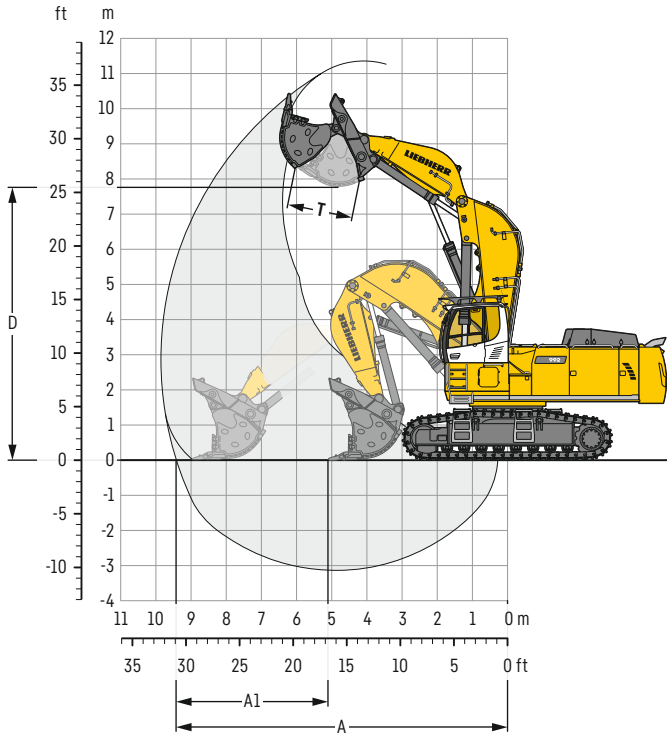
	HD	mm		HD	mm
A	Uppercarriage width	3,565	I	Undercarriage ground clearance	690
A1	Uppercarriage width with catwalks	4,730	J	Track height	1,460
B	Uppercarriage height	3,725	K	Track gauge	3,600
C	Cab height	4,495	L	Track pad width	500 600 750
C1	Cab height with FOPS top guard	4,690	M	Width over tracks	4,380 4,380 4,380
D	Counterweight ground clearance	1,620	N	Width over steps	5,010 5,010 5,010
E	Rear-end length	4,515	T	Boom height	4,500
G	Wheelbase	4,770	U	Length on ground	11,100
H	Undercarriage length	5,960	V	Overall length	13,850

Transport dimensions

removable elements disassembled

	Shovel equipment mm
Transport width	4,730
Transport length	13,850
Transport height	4,690
Shovel	5.10m ³

Front shovel



Digging envelope

A	Max. reach at ground level	m	9.40
A1	Max. crowd length	m	3.90
D	Max. dumping height	m	7.80
T	Bucket opening width	mm	1,825

Forces

Max. crowd force	kN	690
Max. crowd force at ground level	kN	490
Max. breakout force	kN	500

Operating weight and ground pressure

The operating weight includes the basic machine with cab elevation 800 mm, shovel equipment and front shovel 5.10 m³ (9,200 kg), level II.

Undercarriage		HD		
		500	600	750
Pad width	mm	500	600	750
Weight	kg	91,500	92,200	93,300
Ground pressure	kg/cm ²	1.76	1.48	1.20

Front shovels

Cutting width	Capacity ISO 7451	Weight	Wear kit level
mm	m ³	kg	
2,700	5.10	8,450	I
2,700	5.10	9,200	II
2,700	5.10	10,150	III
2,700	5.40	10,600	III
2,700	5.60	8,750	I
2,700	5.60	9,500	II
2,700	6.00	9,950	I
2,700	6.00	10,700	II

HD undercarriage

Shovel equipment

▲
▲
■
■
■
▲
■

Level I: For non-abrasive materials, such as limestone without flint inclusion, shot material or easily breakable rock, i.e., deteriorated rock, soft limestone, shale, etc.

Level II: For pre-blasted heavy rock, or deteriorated, cracked material (classification 3 to 4, according to DIN 18300)

Level III: For highly-abrasive materials such as rock with a high silica content, sandstone etc.

Max. material weight ▲ = ≤ 2.0t/m³, ■ = ≤ 1.8t/m³, ▲ = ≤ 1.65t/m³, ■ = ≤ 1.5t/m³

Lift capacities

with mono boom 7.20 m, counterweight 14.1 t and track pads 600 mm

Stick 2.90 m

Under-carriage m	3.0m		4.5m		6.0m		7.5m		9.0m		10.5m		m	
10.5												23.9*	23.9*	6.4
9.0												21.3*	21.3*	8.0
7.5												19.5	20.2*	9.0
6.0					27.7*	27.7*	23.6*	23.6*	19.2	21.3*		16.9	19.9*	9.7
4.5					31.9*	31.9*	24.6	25.6*	18.6	22.2*		15.5	19.9	10.1
3.0					32.2	35.5*	23.4	27.6*	18.0	23.2*		14.7	19.0	10.3
1.5					30.1	37.0*	21.8	29.1	17.0	22.5		14.6	18.9	10.2
0					30.8	37.2*	22.4	28.9*	17.4	22.7		15.0	19.5	9.9
-1.5					30.1	37.0*	21.8	29.1	17.0	22.5		16.1	21.1*	9.3
-3.0	40.6*	40.6*	38.5*	38.5*	29.9	35.1*	21.6	28.0*	16.9	22.1		18.6	20.7*	8.5
-4.5			30.5*	30.5*	24.6*	24.6*						19.2*	19.2*	7.1
-6.0														
10.5												23.5*	23.5*	6.4
9.0												21.2*	21.2*	8.0
7.5									20.4	21.1*		20.1	20.2*	9.0
6.0					28.0*	28.0*	23.7*	23.7*	20.1	21.4*		17.6	19.9*	9.7
4.5					32.2*	32.2*	25.7	25.8*	19.5	22.3*		16.2	20.2*	10.1
3.0					33.6	35.7*	24.5	27.7*	18.8	23.2*		15.5	20.8*	10.3
1.5					32.2	37.3*	23.5	28.9*	18.3	23.9*		15.4	20.9*	10.2
0					31.6	36.9*	22.9	29.1*	17.9	23.7*		15.9	21.1*	9.9
-1.5			40.4*	40.4*	31.5	34.9*	22.7	27.8*	17.8	22.2*		17.2	21.1*	9.3
-3.0	42.5*	42.5*	38.4*	38.4*	31.0*	31.0*	23.0	24.5*				19.9	20.6*	8.5
-4.5			29.5*	29.5*	23.8*	23.8*						18.9*	18.9*	7.1
-6.0														

Stick 3.30 m

Under-carriage m	3.0m		4.5m		6.0m		7.5m		9.0m		10.5m		m	
10.5												20.1*	20.1*	7.0
9.0												18.2*	18.2*	8.4
7.5												17.3*	17.3*	9.4
6.0												15.9	17.3*	10.1
4.5												14.6	17.3*	10.5
3.0												13.9	18.0*	10.6
1.5												13.8	18.0	10.6
0												14.1	17.3	10.3
-1.5												15.1	19.7	9.7
-3.0	36.6*	36.6*	36.8*	36.8*	29.9	35.8*	21.5	28.3*	16.7	22.0		17.1	20.1*	8.9
-4.5			33.5*	33.5*	26.8*	26.8*						19.1*	19.1*	7.7
-6.0														
10.5												19.9*	19.9*	7.0
9.0												18.1*	18.1*	8.4
7.5												17.3*	17.3*	9.4
6.0												16.5	17.1*	10.1
4.5												15.3	17.4*	10.5
3.0												14.6	18.0*	10.6
1.5												14.5	19.3*	10.6
0												14.9	20.1*	10.3
-1.5												16.0	20.2*	9.7
-3.0	38.2*	38.2*	40.8*	40.8*	31.5	32.2*	22.7	25.6*				18.3	20.0*	8.9
-4.5			32.7*	32.7*	26.1*	26.1*						18.9*	18.9*	7.7
-6.0														

Stick 3.80 m

Under-carriage m	3.0m		4.5m		6.0m		7.5m		9.0m		10.5m		m	
10.5												16.7*	16.7*	7.7
9.0												15.3*	15.3*	9.0
7.5												14.7*	14.7*	10.0
6.0												14.5*	14.5*	10.6
4.5												13.6	14.7*	11.0
3.0												13.0	15.2*	11.1
1.5												12.9	16.1*	11.0
0												13.1	17.1	10.8
-1.5												13.9	18.2	10.3
-3.0	32.7*	32.7*	34.9*	34.9*	29.8	36.3*	21.5	28.5*	16.6	21.9		15.6	19.3*	9.5
-4.5	48.1*	48.1*	36.9*	36.9*	29.0*	29.0*	21.7	22.6*				18.8*	18.8*	8.3
-6.0			19.8*	19.8*								17.2*	17.2*	6.5
10.5												16.6*	16.6*	7.7
9.0												15.2*	15.2*	9.0
7.5												14.6*	14.6*	10.0
6.0												14.5*	14.5*	10.6
4.5												14.3	14.7*	11.0
3.0												13.7	15.2*	11.1
1.5												13.6	16.2*	11.0
0												13.9	17.7*	10.8
-1.5												14.8	19.3*	10.3
-3.0	33.9*	33.9*	43.3*	43.3*	31.3	33.5*	22.5	26.5*	17.6	20.9*		16.7	19.3*	9.5
-4.5	47.0*	47.0*	36.2*	36.2*	28.5*	28.5*	22.0*	22.0*				18.7*	18.7*	8.3
-6.0														

Stick 4.70 m

Under-carriage m	3.0m		4.5m		6.0m		7.5m		9.0m		10.5m		m	
10.5												12.6*	12.6*	8.9
9.0												11.7*	11.7*	10.1
7.5												11.2*	11.2*	10.9
6.0												11.1*	11.1*	11.5
4.5												11.2*	11.2*	11.8
3.0												11.6*	11.6*	12.0
1.5												11.4	12.2*	11.9
0												11.6	13.1*	11.6
-1.5	18.1*	18.1*	32.5*	32.5*	29.8	36.7*	21.4	28.6*	16.5	21.8		12.2	14.6*	11.2
-3.0	27.4*	27.4*	43.5*	43.5*	29.5	35.4*	21.1	27.7*	16.3	21.6		13.3	17.0*	10.5
-4.5	39.3*	39.3*	41.9*	41.9*	29.6	32.0*	21.2	25.2*	16.5	19.5*		15.5	17.7*	9.4
-6.0	44.9*	44.9*	33.5*	33.5*	25.9*	25.9*	19.4*	19.4*				16.9*	16.9*	8.0
10.5												12.6*	12.6*	8.9
9.0												15.9*	15.9*	10.1
7.5												16.8*	16.8*	10.9
6.0												14.2*	14.2*	11.5
4.5												16.1	16.6*	11.1
3.0												15.7	17.6*	11.8
1.5												15.2	18.4*	12.0
0												14.7	19.2*	11.9
-1.5	18.9*	18.9*	26.1*	26.1*	32.1	36.5*	23.2	28.2*	17.8	23.1*		14.3	19.5*	11.6
-3.0	28.3*	28.3*	44.7*	44.7*	31.0	35.1*	22.3	27.9*	17.2	22.2*		14.0	19.2*	11.2
-4.5	40.5*	40.5*	41.3*	41.3*	31.2	31.6*	22.4	24.9*	17.4	19.1*		16.6	17.7*	9.4
-6.0	43.4*	43.4*	32.5*	32.5*	25.1*	25.1*	18.6*	18.6*				16.8*	16.8*	8.0

Height Can be slewed through 360° In longitudinal position of undercarriage Max. reach * Limited by hydr. capacity

The load values are quoted in tons (t) at stick end (without bucket), and may be swung 360° on firm and even ground. Adjacent values are valid for the undercarriage when in the longitudinal position. Capacities are valid for 600 mm wide track pads. Indicated loads are based on ISO 10567 standard and do not exceed 75% of tipping or 87% of hydraulic capacity (indicated via *). Without bucket cylinder, link and lever the lift capacities will increase by 1,320 kg. Lifting capacity of the excavator is limited by machine stability and hydraulic capacity.

According to European Standard, EN 474-5: In the European Union excavators have to be equipped with an overload warning device, a load diagram and automatic safety check valves on hoist cylinders and stick cylinder(s), when they are used for lifting operations which require the use of lifting accessories.

Determine maximum load lift from load lift chart displayed in the operator's cab or from load lift chart detailed in the operator's manual supplied with the machine.

Lift capacities

with mono boom 7.20 m, counterweight 16.0 t and track pads 600 mm

Stick 2.90 m

Under-carriage m	3.0m		4.5m		6.0m		7.5m		9.0m		10.5m		m	
10.5												23.9*	23.9*	6.4
9.0												21.3*	21.3*	8.0
7.5												20.2*	20.2*	9.0
6.0												18.0*	19.9*	9.7
4.5												16.5*	20.2*	10.1
3.0												15.8*	20.2*	10.3
1.5												15.6*	20.1*	10.2
0												16.0*	20.7*	9.9
-1.5												17.3*	21.1*	9.3
-3.0												19.9*	20.7*	8.5
-4.5												19.2*	19.2*	7.1
-6.0														
10.5												23.5*	23.5*	6.4
9.0												21.2*	21.2*	8.0
7.5												20.2*	20.2*	9.0
6.0												18.7*	19.9*	9.7
4.5												17.2*	20.2*	10.1
3.0												16.5*	20.8*	10.3
1.5												16.4*	20.9*	10.2
0												16.9*	21.1*	9.9
-1.5												18.3*	21.1*	9.3
-3.0												20.6*	20.6*	8.5
-4.5												18.9*	18.9*	7.1
-6.0														

Stick 3.30 m

Under-carriage m	3.0m		4.5m		6.0m		7.5m		9.0m		10.5m		m	
10.5												20.1*	20.1*	7.0
9.0												18.2*	18.2*	8.4
7.5												17.3*	17.3*	9.4
6.0												17.0*	17.3*	10.1
4.5												15.6*	17.3*	10.5
3.0												14.9*	18.0*	10.6
1.5												14.7*	19.0*	10.6
0												15.1*	19.5*	10.3
-1.5												16.2*	20.2*	9.7
-3.0												18.4*	20.1*	8.9
-4.5												19.1*	19.1*	7.7
-6.0														
10.5												19.9*	19.9*	7.0
9.0												18.1*	18.1*	8.4
7.5												17.3*	17.3*	9.4
6.0												17.1*	17.1*	10.1
4.5												16.3*	17.4*	10.5
3.0												15.6*	18.0*	10.6
1.5												15.5*	19.3*	10.6
0												16.0*	20.1*	10.3
-1.5												17.2*	20.1*	9.7
-3.0												19.6*	20.0*	8.9
-4.5												18.9*	18.9*	7.7
-6.0														

Stick 3.80 m

Under-carriage m	3.0m		4.5m		6.0m		7.5m		9.0m		10.5m		m	
10.5												16.7*	16.7*	7.7
9.0												15.3*	15.3*	9.0
7.5												14.7*	14.7*	10.0
6.0												14.5*	14.5*	10.6
4.5												14.6*	14.7*	11.0
3.0												14.0*	15.2*	11.1
1.5												13.8*	16.1*	11.0
0												14.1*	17.5*	10.8
-1.5												15.0*	19.3*	10.3
-3.0												16.7*	19.3*	9.5
-4.5												18.8*	18.8*	8.3
-6.0												17.2*	17.2*	6.5
10.5												16.6*	16.6*	7.7
9.0												15.2*	15.2*	9.0
7.5												14.6*	14.6*	10.0
6.0												14.5*	14.5*	10.6
4.5												14.7*	14.7*	11.0
3.0												16.0*	19.5*	11.1
1.5												15.6*	19.9*	11.0
0												14.9*	17.7*	10.8
-1.5												15.9*	19.3*	10.3
-3.0												17.8*	19.3*	9.5
-4.5												18.7*	18.7*	8.3
-6.0														

Stick 4.70 m

Under-carriage m	3.0m		4.5m		6.0m		7.5m		9.0m		10.5m		m	
10.5												12.6*	12.6*	8.9
9.0												11.7*	11.7*	10.1
7.5												11.2*	11.2*	10.9
6.0												11.1*	11.1*	11.5
4.5												11.2*	11.2*	11.8
3.0												11.6*	11.6*	12.0
1.5												12.2*	12.2*	11.9
0												12.5*	13.1*	11.6
-1.5												13.1*	14.6*	11.2
-3.0												14.3*	17.0*	10.5
-4.5												16.6*	17.7*	9.4
-6.0												16.9*	16.9*	8.0
10.5												12.6*	12.6*	8.9
9.0												15.9*	15.9*	10.1
7.5												16.8*	16.8*	10.9
6.0												14.2*	14.2*	11.5
4.5												16.7*	17.6*	11.8
3.0												16.2*	18.4*	12.0
1.5												15.7*	19.2*	11.9
0												15.3*	19.5*	11.6
-1.5												15.0*	19.2*	11.2
-3.0												15.2*	17.3*	10.5
-4.5												17.7*	17.7*	9.4
-6.0												16.8*	16.8*	8.0

Height Can be slewed through 360° In longitudinal position of undercarriage Max. reach * Limited by hydr. capacity

The load values are quoted in tons (t) at stick end (without bucket), and may be swung 360° on firm and even ground. Adjacent values are valid for the undercarriage when in the longitudinal position. Capacities are valid for 600 mm wide track pads. Indicated loads are based on ISO 10567 standard and do not exceed 75% of tipping or 87% of hydraulic capacity (indicated via *). Without bucket cylinder, link and lever the lift capacities will increase by 1,320 kg. Lifting capacity of the excavator is limited by machine stability and hydraulic capacity.

According to European Standard, EN 474-5: In the European Union excavators have to be equipped with an overload warning device, a load diagram and automatic safety check valves on hoist cylinders and stick cylinder(s), when they are used for lifting operations which require the use of lifting accessories.

Determine maximum load lift from load lift chart displayed in the operator's cab or from load lift chart detailed in the operator's manual supplied with the machine.

Lift capacities

with mono boom 8.60 m, counterweight 14.1 t and track pads 600 mm

Stick 3.30 m

Under-carriage m	3.0 m		4.5 m		6.0 m		7.5 m		9.0 m		10.5 m		12.0 m		13.5 m		m		
12.0																			
10.5									16.4*	16.4*							16.5*	16.5*	9.1
9.0									16.0*	16.0*							15.4*	15.9*	10.3
7.5								18.4*	18.4*	16.6*	16.6*	14.7	15.7*				13.2	15.7*	11.1
6.0								20.5*	20.5*	17.8*	17.8*	14.3	16.1*				11.9	15.4	11.6
4.5								22.8	22.9*	17.5	19.1*	13.8	16.9*				11.1	14.4	12.0
3.0								21.3	25.1*	16.6	20.5*	13.3	17.4	10.8	14.2		10.6	13.9	12.1
1.5								20.3	26.5*	15.9	21.1	12.8	16.9	10.6	13.9		10.5	13.8	12.1
0								19.8	26.9	15.4	20.6	12.5	16.6				10.6	14.1	11.8
-1.5								19.6	26.6*	15.2	20.4	12.4	16.4				11.2	14.8	11.4
-3.0								19.7	25.4*	15.2	20.4	12.5	16.6				12.3	16.3	10.7
-4.5			27.5*	27.5*	27.7	31.1*	19.7	25.4*	15.2	20.4	12.5	16.6					14.4	16.3*	9.7
-6.0			33.7*	33.7*	27.9*	27.9*	20.1	23.0*	15.6	18.6*							15.4*	15.4*	8.3
-7.5			27.3*	27.3*	22.9*	22.9*	18.3*	18.3*											
-9.0																			
12.0									16.3*	16.3*							16.4*	16.4*	9.1
10.5									16.0*	16.0*							15.9*	15.9*	10.3
9.0								18.5*	18.5*	16.7*	16.7*	15.4	15.7*				13.8	15.6*	11.1
7.5								20.7*	20.7*	17.9*	17.9*	15.0	16.2*				12.5	15.6*	11.6
6.0								23.1*	23.1*	18.3	19.3*	14.5	17.0*	11.7	15.7*		11.7	15.6*	12.0
4.5								22.4	25.2*	17.4	20.6*	14.0	17.7*	11.4	15.9*		11.2	15.8*	12.1
3.0								21.4	26.6*	16.7	21.5*	13.5	18.3*	11.2	16.1*		11.1	16.0*	12.1
1.5								20.9	27.0*	16.3	22.0*	13.2	18.6*				11.3	16.2*	11.8
0								20.7	26.5*	16.1	21.8*	13.1	18.2*				12.0	16.4*	11.4
-1.5								20.8	25.2*	16.2	20.7*	13.3	16.7*				13.2	16.5*	10.7
-3.0			28.9*	28.9*	29.3	30.8*	20.8	25.2*	16.2	20.7*	13.3	16.7*					15.5	16.3*	9.7
-4.5			33.3*	33.3*	27.6*	27.6*	21.3	22.7*	16.6	18.2*							15.5	16.3*	9.7
-6.0			26.6*	26.6*	22.3*	22.3*	17.7*	17.7*									15.3*	15.3*	8.3
-7.5																			
-9.0																			

Stick 3.80 m

Under-carriage m	3.0 m		4.5 m		6.0 m		7.5 m		9.0 m		10.5 m		12.0 m		13.5 m		m		
12.0																	16.3*	16.3*	8.3
10.5									15.1*	15.1*							15.3*	15.3*	9.8
9.0									15.0*	15.0*	14.8*	14.8*					14.1	14.9*	10.8
7.5									15.8*	15.8*	14.9*	14.9*					12.3	14.6*	11.6
6.0								19.5*	19.5*	17.0*	17.0*	14.5	15.5*	11.4	14.7*		11.1	14.4	12.1
4.5								22.0*	22.0*	17.7	18.4*	13.9	16.3*	11.1	14.5		10.4	13.6	12.5
3.0								21.6	24.3*	16.7	19.9*	13.3	17.2*	10.8	14.2		9.9	13.1	12.6
1.5								20.5	25.9*	16.0	21.0*	12.8	16.9	10.5	13.9		9.8	13.0	12.5
0								19.8	26.7*	15.4	20.6	12.4	16.5	10.3	13.7		10.0	13.2	12.3
-1.5								19.5	26.6	15.1	20.3	12.2	16.3				10.4	13.8	11.9
-3.0								19.5	25.8*	15.1	20.3	12.3	16.3				11.4	15.1	11.2
-4.5			29.5*	29.5*	25.7*	25.7*	19.5	25.8*	15.1	20.3	12.3	16.3					13.0	15.7*	10.3
-6.0			30.4*	30.4*	36.2*	36.2*	27.8	29.2*	19.8	23.8*							15.2*	15.2*	9.0
-7.5																			
-9.0																			
12.0									15.0*	15.0*							16.2*	16.2*	8.3
10.5									15.1*	15.1*	14.7*	14.7*					15.3*	15.3*	9.8
9.0									15.8*	15.8*	14.9*	14.9*					14.6	14.9*	10.8
7.5									17.1*	17.1*	15.2	15.5*	12.0	14.7*			12.8	14.6*	11.6
6.0								19.7*	19.7*	17.1*	17.1*	15.2	15.5*	12.0	14.7*		11.7	14.5*	12.1
4.5								22.2*	22.2*	18.5	18.6*	14.6	16.4*	11.8	15.0*		10.9	14.6*	12.5
3.0								22.7	24.4*	17.6	20.0*	14.0	17.2*	11.4	15.4*		10.5	14.9*	12.6
1.5								21.6	26.0*	16.8	21.1*	13.5	17.9*	11.1	15.8*		10.4	15.1*	12.5
0								20.9	26.8*	16.3	21.7*	13.2	18.3*	10.9	15.8*		10.6	15.4*	12.3
-1.5								20.6	26.6*	16.0	21.8*	13.0	18.3*				11.2	15.6*	11.9
-3.0								20.6	25.6*	16.0	21.0*	13.0	17.4*				12.2	15.7*	11.2
-4.5			30.7*	30.7*	35.8*	35.8*	28.9*	28.9*	21.0	23.6*	16.3	19.2*					14.0	15.7*	10.3
-6.0			29.8*	29.8*	29.8*	29.8*	24.4*	24.4*	19.7*	19.7*							15.1*	15.1*	9.0
-7.5																			
-9.0																			

Height Can be slewed through 360° In longitudinal position of undercarriage Max. reach * Limited by hydr. capacity

The load values are quoted in tons (t) at stick end (without bucket), and may be swung 360° on firm and even ground. Adjacent values are valid for the undercarriage when in the longitudinal position. Capacities are valid for 600 mm wide track pads. Indicated loads are based on ISO 10567 standard and do not exceed 75% of tipping or 87% of hydraulic capacity (indicated via *). Without bucket cylinder, link and lever the lift capacities will increase by 1,320 kg. Lifting capacity of the excavator is limited by machine stability and hydraulic capacity.

According to European Standard, EN 474-5: In the European Union excavators have to be equipped with an overload warning device, a load diagram and automatic safety check valves on hoist cylinders and stick cylinder(s), when they are used for lifting operations which require the use of lifting accessories.

Determine maximum load lift from load lift chart displayed in the operator's cab or from load lift chart detailed in the operator's manual supplied with the machine.

Stick 4.70 m

Under-carriage m	3.0 m		4.5 m		6.0 m		7.5 m		9.0 m		10.5 m		12.0 m		13.5 m		m		
12.0																	13.3*	13.3*	9.5
10.5																	12.2*	12.2*	10.9
9.0																	11.5*	11.5*	11.8
7.5																	10.8	11.2*	12.5
6.0																	9.8	11.1*	13.0
4.5								20.1*	20.1*								9.2	11.2*	13.3
3.0								22.3	22.6*	17.1	18.6*	13.5	16.2*	10.9	14.3		8.9	11.5*	13.5
1.5								20.9	24.7*	16.1	20.0*	12.9	17.0	10.5	13.9		8.7	11.6	13.4
0								19.9	26.0*	15.4	20.7	12.4	16.5	10.2	13.5		8.8	11.8	13.2
-1.5						27.0	30.4*	19.4	26.5*	15.0	20.2	12.1	16.2	10.0	13.3		9.2	12.2	12.8
-3.0						26.9	33.1*	19.2	26.1*	14.8	20.0	11.9	16.0	10.0	13.4		9.9	13.1	12.2
-4.5	24.3*	24.3*	22.9*	22.9*	26.9	33.1*	19.2	26.1*	14.8	20.0	11.9	16.0	10.0	13.4		11.0	14.5*	11.3	
-6.0	35.3*	35.3*	33.5*	33.5*	27.2	31.1*	19.3	24.9*	14.9	20.1	12.1	16.1				13.1	14.4*	10.1	
-7.5			27.7*	27.7*	22.2*	22.2*	17.5*	17.5*	15.2	18.0*						13.6*	13.6*	8.6	
-9.0																			
12.0																	13.1*	13.1*	9.5
10.5																	12.1*	12.1*	10.9
9.0																	11.5*	11.5*	11.8
7.5																	11.2*	11.2*	12.5
6.0																	10.4	11.1*	13.0
4.5								17.7*	17.7*	15.6*	15.6*	14.3*	14.3*	12.3	13.4*		9.8	11.2*	13.3
3.0								20.3*	20.3*	17.2*	17.2*	14.8	15.2*	11.9	14.0*		9.4	11.5*	13.5
1.5								22.8*	22.8*	17.9	18.8*	14.2	16.3*	11.5	14.6*		9.3	12.0*	13.4
0								21.9	24.9*	17.0	20.2*	13.6	17.2*	11.1	15.1*		9.4	12.7*	12.8
-1.5								21.0	26.1*	16.3	21.1*	13.1	17.8*	10.8	15.5*		9.8	13.8*	13.2
-3.0						28.5	31.1*	20.5	26.5*	15.9	21.5*	12.8	18.1*	10.6	15.4*		10.6	14.4*	12.2
-4.5			23.7*	23.7*	28.5	32.9*	20.3	26.1*	15.7	21.3*	12.7	17.8*	10.7	14.6*		11.9	14.5*	11.3	
-6.0	25.1*	25.1*	34.6*	34.6*	28.8	30.8*	20.5	24.7*	15.8	20.2*	12.8	16.5*				14.2	14.4*	10.1	
-7.5	36.4*	36.4*	34.6*	34.6*	27.3*	27.3*	20.9	22.0*	16.2	17.6*						13.5*	13.5*	8.6	
-9.0			26.9*	26.9*	21.6*	21.6*	16.8*	16.8*											

Stick 5.80 m

Under-carriage m	3.0 m		4.5 m		6.0 m		7.5 m		9.0 m		10.5 m		12.0 m		13.5 m		m		
12.0																	9.9*	9.9*	11.0
10.5																	9.2*	9.2*	12.2
9.0																	8.8*	8.8*	13.0
7.5																	8.6*	8.6*	13.7
6.0																	8.5*	8.5*	14.1
4.5																	8.3	8.6*	14.4
3.0								17.9*	17.9*	15.6*	15.6*	14.0*	14.0*	11.8	13.0*		8.0	8.8*	14.5
1.5								20.8*	20.8*	17.4*	17.4*	14.1	15.2*	11.3	13.8*		7.9	9.1*	14.5
0								22.0	23.3*	16.9	19.1*	13.4	16.4*	10.9	14.3		7.9	9.1*	14.5
-1.5								20.7	25.2*	16.0	20.4*	12.8	16.9	10.5	13.8		7.9	9.6*	14.3
-3.0								19.9	26.3*	15.4	20.6	12.3	16.4	10.2	13.5		8.2	10.3*	13.9
-4.5								19.5	26.6*	15.0	20.2	12.1	16.1	10.0	13.3		8.7	11.3*	13.3
-6.0	19.9*	19.9*	20.4*	20.4*	27.1	34.2*	19.3	26.0*	14.9	20.1	12.0	16.1	10.0	13.4		9.5	12.6	12.6	
-7.5	27.7*	27.7*	37.9*	37.9*	27.4	30.7*	19.5	24.5*	15.0	19.9*	12.1	16.2				10.8	13.5*	11.5	
-9.0	38.2*	38.2*	34.6*	34.6*	26.8*	26.8*	20.0	21.4*	15.4	17.1*						13.3	13.4*	10.2	
			25.9*	25.9*	20.3*	20.3*	15.5*	15.5*								12.5*	12.5*	8.3	
12.0																	9.8*	9.8*	11.0
10.5																	9.2*	9.2*	12.2
9.0																	8.8*	8.8*	13.0
7.5																	8.6*	8.6*	13.7
6.0																	8.5*	8.5*	14.1
4.5																	8.6*	8.6*	14.4
3.0								18.2*	18.2*	15.7*	15.7*	14.1*	14.1*	12.4	13.1*		8.5	8.8*	14.5
1.5								21.0*	21.0*	17.5*	17.5*	14.8	15.3*	11.9	13.8*		8.4	9.1*	14.5
0								23.0	23.5*	17.7	19.2*	14.1	16.4*	11.5	14.6*		8.5	9.6*	14.3
-1.5								21.8	25.4*	16.8	20.5*	13.5	17.4*	11.1	15.2*		8.8	10.3*	13.9
-3.0								21.0	26.4*	16.2	21.4*	13.1	18.0*	10.8	15.5*		9.3	11.4*	13.3
-4.5	14.1*	14.1*	21.0*	21.0*	28.7	34.1*	20.6	26.6*	15.9	21.6*	12.8	18.1*	10.6	15.4*		10.2	12.9*	12.6	
-6.0	20.5*	20.5*	28.6*	28.6*	28.7	32.9*	20.5	26.0*	15.8	21.2*	12.7	17.6*	10.7	14.6*		11.7	13.5*	11.5	
-7.5	28.5*	28.5*	39.0*	39.0*	29.0	30.5*	20.7	24.3*	15.9	19.8*	12.9	16.1*				13.4*	13.4*	10.2	
-9.0	39.4*	39.4*	34.0*	34.0*	26.4*	26.4*	21.1*	21.1*	16.4	16.7*						12.3*	12.3*	8.3	

Height Can be slewed through 360° In longitudinal position of undercarriage Max. reach * Limited by hydr. capacity

The load values are quoted in tons (t) at stick end (without bucket), and may be swung 360° on firm and even ground. Adjacent values are valid for the undercarriage when in the longitudinal position. Capacities are valid for 600 mm wide track pads. Indicated loads are based on ISO 10567 standard and do not exceed 75% of tipping or 87% of hydraulic capacity (indicated via *). Without bucket cylinder, link and lever the lift capacities will increase by 1,320 kg. Lifting capacity of the excavator is limited by machine stability and hydraulic capacity.

According to European Standard, EN 474-5: In the European Union excavators have to be equipped with an overload warning device, a load diagram and automatic safety check valves on hoist cylinders and stick cylinder(s), when they are used for lifting operations which require the use of lifting accessories.

Determine maximum load lift from load lift chart displayed in the operator's cab or from load lift chart detailed in the operator's manual supplied with the machine.

Lift capacities

with mono boom 8.60 m, counterweight 16.0 t and track pads 600 mm

Stick 3.30 m

Under-carriage m	3.0 m		4.5 m		6.0 m		7.5 m		9.0 m		10.5 m		12.0 m		13.5 m		m		
12.0																			
10.5									16.4*	16.4*							16.5*	16.5*	9.1
9.0									16.0*	16.0*							15.9*	15.9*	10.3
7.5								18.4*	18.4*	16.6*	16.6*						14.2	15.7*	11.1
6.0								20.5*	20.5*	17.8*	17.8*	15.3	16.1*				12.8	15.6*	11.6
4.5								22.9*	22.9*	18.7	19.1*	14.8	16.9*				11.9	15.4	12.0
3.0								22.9	25.1*	17.8	20.5*	14.3	17.7*	11.6	15.1		11.4	14.9	12.1
1.5								21.9	26.5*	17.1	21.5*	13.8	18.1	11.4	14.9		11.3	14.7	12.1
0								21.3	27.0*	16.6	22.0*	13.5	17.7				11.5	15.1	11.8
-1.5						29.5	31.7*	21.1	26.6*	16.4	21.8	13.4	17.6				12.1	15.9	11.4
-3.0						29.8	31.1*	21.2	25.4*	16.5	20.9*	13.5	17.0*				13.3	16.5*	10.7
-4.5			27.5*	27.5*		27.9*	27.9*	21.6	23.0*	16.8	18.6*						15.5	16.3*	9.7
-6.0			33.7*	33.7*		27.9*	27.9*	21.6	23.0*	16.8	18.6*						15.5	16.3*	9.7
-7.5			27.3*	27.3*		22.9*	22.9*	18.3*	18.3*								15.4*	15.4*	8.3
-9.0																			
12.0																			
10.5										16.3*	16.3*						16.4*	16.4*	9.1
9.0										16.0*	16.0*						15.9*	15.9*	10.3
7.5								18.5*	18.5*	16.7*	16.7*	15.7*	15.7*				14.7	15.6*	11.1
6.0								20.7*	20.7*	17.9*	17.9*	16.0	16.2*				13.3	15.6*	11.6
4.5								23.1*	23.1*	19.3*	19.3*	15.5	17.0*	12.5	15.7*		12.5	15.6*	12.0
3.0								23.9	25.2*	18.6	20.6*	15.0	17.7*	12.3	15.9*		12.1	15.8*	12.1
1.5								22.9	26.6*	18.0	21.5*	14.5	18.3*	12.0	16.1*		12.0	16.0*	12.1
0								22.4	27.0*	17.5	22.0*	14.2	18.6*				12.2	16.2*	11.8
-1.5						31.1	32.9*	22.3	26.5*	17.3	21.8*	14.1	18.2*				12.9	16.4*	11.4
-3.0			28.9*	28.9*		30.8*	30.8*	22.4	25.2*	17.4	20.7*	14.3	16.7*				14.2	16.5*	10.7
-4.5			33.3*	33.3*		27.6*	27.6*	22.7*	22.7*	17.8	18.2*						16.3*	16.3*	9.7
-6.0			26.6*	26.6*		22.3*	22.3*	17.7*	17.7*								15.3*	15.3*	8.3
-7.5																			
-9.0																			

Stick 3.80 m

Under-carriage m	3.0 m		4.5 m		6.0 m		7.5 m		9.0 m		10.5 m		12.0 m		13.5 m		m		
12.0																			
10.5										15.1*	15.1*						16.3*	16.3*	8.3
9.0										15.0*	15.0*	14.8*	14.8*				15.3*	15.3*	9.8
7.5										15.8*	15.8*	14.9*	14.9*				14.9*	14.9*	10.8
6.0								19.5*	19.5*	17.0*	17.0*	15.5*	15.5*	12.2	14.7*		13.2	14.6*	11.6
4.5								22.0*	22.0*	18.4*	18.4*	14.9	16.3*	12.0	15.0*		11.9	14.5*	12.1
3.0								23.2	24.3*	18.0	19.9*	14.3	17.2*	11.7	15.1		11.2	14.5	12.5
1.5								22.0	25.9*	17.2	21.0*	13.8	17.9*	11.4	14.8		10.7	14.0	12.6
0								21.3	26.7*	16.6	21.7*	13.4	17.7	11.4	14.8		10.6	13.9	12.5
-1.5						29.3	31.3*	21.0	26.7*	16.3	21.7	13.2	17.5	11.2	14.6		10.8	14.1	12.3
-3.0			25.7*	25.7*		29.5	32.0*	21.0	25.8*	16.3	21.1*	13.3	17.5				11.3	14.8	11.9
-4.5	29.5*	29.5*	36.2*	36.2*		29.2*	29.2*	21.3	23.8*	16.5	19.4*						12.3	15.7*	11.2
-6.0			30.4*	30.4*		24.9*	24.9*	20.1*	20.1*								14.1	15.7*	10.3
-7.5																	15.2*	15.2*	9.0
-9.0																			
12.0																			
10.5										15.0*	15.0*						16.2*	16.2*	8.3
9.0										15.1*	15.1*	14.7*	14.7*				15.3*	15.3*	9.8
7.5										15.8*	15.8*	14.9*	14.9*				14.9*	14.9*	10.8
6.0								19.7*	19.7*	17.1*	17.1*	15.5*	15.5*	12.9	14.7*		13.7	14.6*	11.6
4.5								22.2*	22.2*	18.6*	18.6*	15.6	16.4*	12.6	15.0*		12.5	14.5*	12.1
3.0								24.2	24.4*	18.8	20.0*	15.0	17.2*	12.3	15.4*		11.7	14.6*	12.5
1.5								23.1	26.0*	18.0	21.1*	14.5	17.9*	12.0	15.8*		11.3	14.9*	12.6
0								22.4	26.8*	17.5	21.7*	14.2	18.3*	11.8	15.8*		11.2	15.1*	12.5
-1.5						30.8	32.3*	22.2	26.6*	17.2	21.8*	14.0	18.3*				11.4	15.4*	12.3
-3.0			26.9*	26.9*		31.0	31.8*	22.2	25.6*	17.2	21.0*	14.0	17.4*				12.0	15.6*	11.9
-4.5	30.7*	30.7*	35.8*	35.8*		28.9*	28.9*	22.5	23.6*	17.5	19.2*						13.1	15.7*	11.2
-6.0			29.8*	29.8*		24.4*	24.4*	19.7*	19.7*								15.0	15.7*	10.3
-7.5																	15.1*	15.1*	9.0
-9.0																			

Height Can be slewed through 360° In longitudinal position of undercarriage Max. reach * Limited by hydr. capacity

The load values are quoted in tons (t) at stick end (without bucket), and may be swung 360° on firm and even ground. Adjacent values are valid for the undercarriage when in the longitudinal position. Capacities are valid for 600 mm wide track pads. Indicated loads are based on ISO 10567 standard and do not exceed 75% of tipping or 87% of hydraulic capacity (indicated via *). Without bucket cylinder, link and lever the lift capacities will increase by 1,320 kg. Lifting capacity of the excavator is limited by machine stability and hydraulic capacity.

According to European Standard, EN 474-5: In the European Union excavators have to be equipped with an overload warning device, a load diagram and automatic safety check valves on hoist cylinders and stick cylinder(s), when they are used for lifting operations which require the use of lifting accessories.

Determine maximum load lift from load lift chart displayed in the operator's cab or from load lift chart detailed in the operator's manual supplied with the machine.

Stick 4.70 m

Under-carriage m	3.0 m		4.5 m		6.0 m		7.5 m		9.0 m		10.5 m		12.0 m		13.5 m		m			
12.0																	13.3*	13.3*	9.5	
10.5																		12.2*	12.2*	10.9
9.0																		11.5*	11.5*	11.8
7.5																		11.2*	11.2*	12.5
6.0																		10.6	11.1*	13.0
4.5								20.1*	20.1*									10.0	11.2*	13.3
3.0								22.6*	22.6*	15.5*	15.5*							9.6	11.5*	13.5
1.5								22.4	24.7*	17.4	20.0*							9.5	11.9*	13.4
0								21.5	26.0*	16.7	21.0*							9.6	12.6	13.2
-1.5								20.9	26.5*	16.2	21.5*							10.0	13.1	12.8
-3.0								29.0	33.1*	20.7	26.1*							10.7	14.1	12.2
-4.5	24.3*	24.3*	22.9*	22.9*	29.0	33.1*	20.7	26.1*	16.0	21.3*	12.9	17.2	10.9	14.3				12.0	14.5*	11.3
-6.0	35.3*	35.3*	33.5*	33.5*	29.3	31.1*	20.8	24.9*	16.1	20.3*	13.1	16.6*						14.2	14.4*	10.1
-7.5			27.7*	27.7*	22.2*	22.2*	17.5*	17.5*	16.4	18.0*								13.6*	13.6*	8.6
-9.0																				
12.0																		13.1*	13.1*	9.5
10.5																		12.1*	12.1*	10.9
9.0																		11.5*	11.5*	11.8
7.5																		11.2*	11.2*	12.5
6.0																		11.1*	11.1*	13.0
4.5								17.7*	17.7*	14.3*	14.3*							10.5	11.2*	13.3
3.0								20.3*	20.3*	15.6*	15.6*							10.2	11.5*	13.5
1.5								22.8*	22.8*	17.2*	17.2*							10.1	12.0*	13.4
0								23.5	24.9*	18.8*	18.8*							10.2	12.7*	13.2
-1.5								22.6	26.1*	17.5	21.5*							10.6	13.8*	12.8
-3.0								22.0	26.5*	17.1	21.5*							11.5	15.4*	11.8
-4.5	25.1*	25.1*	23.7*	23.7*	30.6	32.9*	21.9	26.1*	16.9	21.3*	13.7	17.8*	11.5	14.6*				11.4	14.4*	12.2
-6.0	36.4*	36.4*	34.6*	34.6*	30.8*	30.8*	22.0	24.7*	17.0	20.2*	13.8	16.5*						12.8	14.5*	11.3
-7.5			26.9*	26.9*	27.3*	27.3*	22.0*	22.0*	17.4	17.6*								14.4*	14.4*	10.1
-9.0					21.6*	21.6*	16.8*	16.8*										13.5*	13.5*	8.6

Stick 5.80 m

Under-carriage m	3.0 m		4.5 m		6.0 m		7.5 m		9.0 m		10.5 m		12.0 m		13.5 m		m			
12.0																		9.9*	9.9*	11.0
10.5																		9.2*	9.2*	12.2
9.0																		8.8*	8.8*	13.0
7.5																		8.6*	8.6*	13.7
6.0																		8.5*	8.5*	14.1
4.5																		10.5	11.8*	14.4
3.0								17.9*	17.9*	15.6*	15.6*							10.2	12.3*	14.5
1.5								20.8*	20.8*	17.4*	17.4*							10.0	12.7*	14.5
0								23.3*	23.3*	18.1	19.1*							9.7	12.6	14.5
-1.5								22.3	25.2*	17.2	20.4*							9.4	12.4	14.3
-3.0								21.4	26.3*	16.6	21.3*							9.3	12.2	13.9
-4.5	19.9*	19.9*	20.4*	20.4*	29.2	30.2*	21.0	26.6*	16.2	21.6	13.1	17.3	11.0	14.5				9.4	10.3*	13.3
-6.0	27.7*	27.7*	37.9*	37.9*	29.2	33.0*	20.9	26.0*	16.1	21.2*	13.0	17.2	10.9	14.3				10.3	12.7*	12.6
-7.5	38.2*	38.2*	34.6*	34.6*	29.6	30.7*	21.0	24.5*	16.2	19.9*	13.1	16.3*						11.7	13.5*	11.5
-9.0			25.9*	25.9*	26.8*	26.8*	21.4*	21.4*	16.7	17.1*								13.4*	13.4*	10.2
12.0																		12.5*	12.5*	8.3
10.5																		9.8*	9.8*	11.0
9.0																		9.2*	9.2*	12.2
7.5																		8.8*	8.8*	13.0
6.0																		8.6*	8.6*	13.7
4.5																		10.0*	10.0*	14.4
3.0																		10.8	12.3*	14.5
1.5																		11.0	11.9*	14.1
0																		11.0	11.9*	14.1
-1.5																		10.8	12.3*	14.4
-3.0	14.1*	14.1*	21.0*	21.0*	30.5*	30.5*	22.5	26.4*	17.5	21.4*	14.1	18.0*	11.6	15.5*				10.5	12.8*	14.5
-4.5	20.5*	20.5*	28.6*	28.6*	30.8	32.9*	22.1	26.6*	17.1	21.6*	13.8	18.1*	11.5	15.4*				10.5	12.8*	14.5
-6.0	28.5*	28.5*	39.0*	39.0*	30.5*	30.5*	22.2	24.3*	17.0	21.2*	13.7	17.6*	11.5	14.6*				11.0	12.9*	12.6
-7.5	39.4*	39.4*	34.0*	34.0*	26.4*	26.4*	21.1*	21.1*	17.1	19.8*	13.9	16.1*						12.6	13.5*	11.5
-9.0			24.9*	24.9*	21.5*	19.5*	14.6*	14.6*	16.7*	16.7*								13.4*	13.4*	10.2
																		12.3*	12.3*	8.3

Height Can be slewed through 360° In longitudinal position of undercarriage Max. reach * Limited by hydr. capacity

The load values are quoted in tons (t) at stick end (without bucket), and may be swung 360° on firm and even ground. Adjacent values are valid for the undercarriage when in the longitudinal position. Capacities are valid for 600 mm wide track pads. Indicated loads are based on ISO 10567 standard and do not exceed 75% of tipping or 87% of hydraulic capacity (indicated via *). Without bucket cylinder, link and lever the lift capacities will increase by 1,320 kg. Lifting capacity of the excavator is limited by machine stability and hydraulic capacity.

According to European Standard, EN 474-5: In the European Union excavators have to be equipped with an overload warning device, a load diagram and automatic safety check valves on hoist cylinders and stick cylinder(s), when they are used for lifting operations which require the use of lifting accessories.

Determine maximum load lift from load lift chart displayed in the operator's cab or from load lift chart detailed in the operator's manual supplied with the machine.

Lift capacities

with mono boom 10.50 m, counterweight 16.0 t and track pads 600 mm

Stick 3.80 m

Under-carriage	3.0m		4.5m		6.0m		7.5m		9.0m		10.5m		12.0m		13.5m		15.0m		16.5m		m			
	↙	↘	↙	↘	↙	↘	↙	↘	↙	↘	↙	↘	↙	↘	↙	↘	↙	↘	↙	↘	↙	↘		
13.5									11.3*	11.3*											11.5*	11.5*	11.1	
12.0									11.2*	11.2*												11.2*	11.2*	12.2
10.5									11.5*	11.5*	11.0*	11.0*										10.3	11.0*	13.1
9.0									11.3*	11.3*	11.6*	11.9*										9.2	11.0*	13.7
7.5							13.7*	13.7*	12.2*	12.2*	11.3*	11.3*	9.6	10.9*								8.5	11.0*	14.2
6.0							15.1*	15.1*	13.1*	13.1*	11.6*	11.9*	9.4	11.1*								8.0	10.7	14.5
4.5							16.7*	16.7*	13.5	14.1*	11.1	12.5*	9.1	11.4*								7.7	10.3	14.6
3.0									12.8	15.0*	10.6	13.1*	8.8	11.7								7.6	10.2	14.5
1.5									12.2	15.8*	10.1	13.6	8.5	11.4								7.7	10.3	14.3
0							14.5	19.5*	11.8	16.0	9.8	13.3	8.3	11.2								8.5	11.4	13.4
-1.5							14.3	19.6	11.6	15.7	9.7	13.1	8.2	11.2								7.9	10.7	13.9
-3.0							14.3	19.4*	11.5	15.7	9.6	13.1										8.5	11.4	13.4
-4.5			26.4*	26.4*	19.0	22.2*	14.4	18.6*	11.7	15.8*	9.8	13.2										9.3	12.2*	12.6
-6.0	28.4*	28.6*	24.3*	24.3*	19.4	20.5*	14.8	17.3*	12.0	14.5*												10.8	12.2*	11.6
-7.5	24.8*	24.8*	21.2*	21.2*	17.9*	17.9*	14.9*	14.9*														11.9*	11.9*	10.2
-9.0			16.1*	16.1*	13.2*	13.2*																10.7*	10.7*	8.4
-10.5																								
13.5									11.3*	11.3*												12.2*	12.2*	11.1
12.0									11.2*	11.2*	11.0*	11.0*										11.5*	11.5*	12.2
10.5									11.6*	11.6*	11.0*	11.0*										10.8	11.0*	13.1
9.0									11.3*	11.3*	11.6*	11.9*										9.7	11.0*	13.7
7.5							13.8*	13.8*	12.3*	12.3*	11.4*	11.4*	10.2	10.9*								9.0	11.0*	14.2
6.0							15.3*	15.3*	13.2*	13.2*	11.9*	11.9*	9.9	11.1*								8.5	11.1*	14.5
4.5							16.8*	16.8*	14.2*	14.2*	11.7	12.5*	9.6	11.5*								8.2	11.3*	14.6
3.0									13.5	15.1*	11.2	13.1*	9.3	11.9*								8.1	11.4*	14.5
1.5									12.9	15.8*	10.8	13.7*	9.1	12.2*								8.2	11.6*	14.3
0							15.3	19.6*	12.5	16.3*	10.5	14.0*	8.9	12.4*								8.5	11.9*	13.9
-1.5							15.2	19.6*	12.3	16.5*	10.3	14.2*	8.8	12.4*								9.1	12.1*	13.4
-3.0					19.8	23.2*	15.2	19.3*	12.3	16.3*	10.3	14.0*										10.0	12.2*	12.6
-4.5			26.3*	26.3*	20.1	22.1*	15.4	18.6*	12.4	15.7*	10.5	13.2*										11.6	12.2*	11.6
-6.0	28.4*	28.4*	24.1*	24.1*	20.3*	20.3*	15.8	17.2*	12.8	14.3*												11.8*	11.8*	10.2
-7.5	24.4*	24.4*	20.8*	20.8*	17.6*	17.6*	14.6*	14.6*														11.2*	11.2*	8.4
-9.0					12.6*	12.6*																		
-10.5																								

Stick 4.70 m

Under-carriage	3.0m		4.5m		6.0m		7.5m		9.0m		10.5m		12.0m		13.5m		15.0m		16.5m		m			
	↙	↘	↙	↘	↙	↘	↙	↘	↙	↘	↙	↘	↙	↘	↙	↘	↙	↘	↙	↘	↙	↘		
13.5																						10.7*	10.7*	10.8
12.0													10.1*	10.1*								10.2*	10.2*	12.2
10.5													9.8*	9.8*								10.0*	10.0*	13.2
9.0													9.9*	9.9*	9.8*	9.8*						9.1	9.9*	14.1
7.5											11.2*	11.2*	10.4*	10.4*	9.8	9.9*						8.2	9.9*	14.7
6.0									13.9*	13.9*	12.1*	12.1*	11.0*	11.0*	9.5	10.2*	7.7	9.9*				7.6	9.9*	15.1
4.5									15.5*	15.5*	13.1*	13.1*	11.2	11.7*	9.2	10.7*	7.5	10.0				7.1	9.6	15.3
3.0									16.0	16.9*	13.0	14.2*	10.6	12.4*	8.8	11.1*	7.3	9.8				6.9	9.3	15.4
1.5									15.1	18.1*	12.3	15.0*	10.1	13.0*	8.5	11.4	7.1	9.6				6.8	9.2	15.4
0									14.5	18.9*	11.7	15.7*	9.7	13.2	8.2	11.1	7.0	9.5				6.8	9.3	15.2
-1.5									14.1	19.3*	11.4	15.6	9.5	12.9	8.0	10.9						7.0	9.6	14.9
-3.0							18.2	23.6*	14.0	19.3	11.3	15.4	9.4	12.8	8.0	10.9						7.4	10.1	14.3
-4.5					23.7*	23.7*	18.4	22.8*	14.0	18.9*	11.3	15.5	9.4	12.8	8.1	11.0						8.1	11.0	13.6
-6.0	19.6*	19.6*	24.6*	24.6*	26.1*	26.1*	18.8	21.5*	14.3	17.9*	11.5	15.1*	9.7	12.6*								9.1	11.3*	12.7
-7.5	28.9*	28.9*	24.6*	24.6*	23.5*	23.5*	19.4	19.5*	14.8	16.2*	12.0	13.4*										10.9	11.2*	11.5
-9.0			23.5*	23.5*	19.5*	19.5*	16.2*	16.2*	13.0*	13.0*												10.7*	10.7*	9.8
13.5													10.0*	10.0*								10.6*	10.6*	10.8
12.0													9.8*	9.8*								10.2*	10.2*	12.2
10.5													10.0*	10.0*								10.0*	10.0*	13.2
9.0													10.4*	10.4*	9.8*	9.8*						9.5	9.9*	14.1
7.5											11.2*	11.2*	10.4*	10.4*	9.9*	9.9*						8.6	9.9*	14.7
6.0									14.0*	14.0*	12.2*	12.2*	11.0*	11.0*	10.1	10.3*	8.1	9.9*				8.0	9.9*	15.1
4.5									15.6*	15.6*	13.2*	13.2*	11.7*	11.7*	9.7	10.7*	8.0	10.1*				7.6	10.0*	15.3
3.0									16.8	17.1*	13.6	14.2*	11.2	12.4*	9.3	11.2*	7.8	10.3*				7.3	10.2*	15.4
1.5									15.9	18.2*	13.0	15.1*	10.7	13.0*	9.0	11.6*	7.6	10.6*				7.3	10.4*	15.4
0									15.3	19.0*	12.5	15.8*	10.4	13.5*	8.7	11.9*	7.4	10.7*				7.3	10.6*	15.2
-1.5									15.0	19.3*	12.2	16.1*	10.1	13.8*	8.6	12.1*						7.5	10.8*	14.9
-3.0							19.4	23.5*	14.9	19.3*	12.0	16.2*	10.0	13.8*	8.5	12.0*						8.0	11.0*	14.3
-4.5					24.6*	24.6*	19.6	22.7*	15.0	18.8*	12.1	15.8*	10.1	13.5*	8.7	11.2*						8.7	11.2*	13.6
-6.0	20.4*	20.4*	25.5*	25.5*	25.9*	25.9*	20.0	21.4*	15.2	17.8*	12.3	15.0*	10.4	12.4*								9.9	11.3*	12.7
-7.5	29.8*	29.8*	28.4*	28.4*	23.2*	23.2*	19.2*	19.2*	15.8	16.0*	12.8	13.1*										11.2*	11.2*	11.5
-9.0			22.9*	22.9*	19.0*	19.0*	15.8*	15.8*	12.6*	12.6*												10.6*	10.6*	9.8

Height Can be slewed through 360° In longitudinal position of undercarriage Max. reach * Limited by hydr. capacity

The load values are quoted in tons (t) at stick end (without bucket), and may be swung 360° on firm and even ground. Adjacent values are valid for the undercarriage when in the longitudinal position. Capacities are valid for 600 mm wide track pads. Indicated loads are based on ISO 10567 standard and do not exceed 75% of tipping or 87% of hydraulic capacity (indicated via *). Without bucket cylinder, link and lever the lift capacities will increase by 1,320 kg. Lifting capacity of the excavator is limited by machine stability and hydraulic capacity.

According to European Standard, EN 474-5: In the European Union excavators have to be equipped with an overload warning device, a load diagram and automatic safety check valves on hoist cylinders and stick cylinder(s), when they are used for lifting operations which require the use of lifting accessories.

Determine maximum load lift from load lift chart displayed in the operator's cab or from load lift chart detailed in the operator's manual supplied with the machine.

Stick 5.80 m

Under-carriage m	3.0 m		4.5 m		6.0 m		7.5 m		9.0 m		10.5 m		12.0 m		13.5 m		15.0 m		16.5 m		m				
13.5														9.2*	9.2*					9.4*	9.4*	12.3			
12.0																					9.2*	9.2*	13.5		
10.5																					9.0*	9.0*	14.5		
9.0																					8.8*	8.8*	15.2		
7.5														9.0*	9.0*	8.8*	8.8*			8.4	8.9*	15.8			
6.0														9.5*	9.5*	9.1*	9.1*			8.3	8.9*	16.2			
4.5														10.2*	10.2*	9.6*	9.6*			8.1	9.1*	16.4			
3.0														11.2*	11.2*	10.2*	10.2*			7.9	9.5*	16.5			
1.5														14.3*	14.3*	12.3*	12.3*			6.3	8.5	16.5			
0														15.9*	17.4*	12.8	14.5*			7.6	9.8*	16.5			
-1.5														15.0	18.5*	12.2	15.3*			8.4	11.3	16.3			
-3.0														14.5	19.2*	11.7	15.9			8.2	11.1	16.0			
-4.5														14.2	19.5*	11.4	15.6			8.0	10.9	15.5			
-6.0														18.4	23.7*	14.1	19.4*			6.9	9.4	14.8			
-7.5	16.1*	16.1*	20.3*	20.3*	20.8*	20.8*	18.4	24.0*	18.4	23.7*	14.1	19.4*	11.3	15.5	9.4	12.8	8.0	10.9			7.1	9.7	14.0		
-9.0	22.7*	22.7*	28.4*	28.4*	26.2*	26.2*	18.6	22.8*	14.2	18.8*	14.2	18.8*	11.4	15.6	9.5	12.9	8.2	11.1			7.9	10.5*	12.9		
-10.5	31.3*	31.3*	29.1*	29.1*	23.1*	23.1*	19.0*	19.0*	15.1	15.7*	11.7	14.8*	9.8	12.3*							10.5*	10.5*	11.5		
			22.8*	22.8*	18.4*	18.4*	15.0*	15.0*	11.7*	11.7*											9.9*	9.9*	9.6		
13.5														9.1*	9.1*							9.4*	9.4*	12.3	
12.0																							9.1*	9.1*	13.5
10.5																							9.0*	9.0*	14.5
9.0																							8.8*	8.8*	15.2
7.5																							8.7*	8.7*	15.8
6.0														9.1*	9.1*	8.8*	8.8*			8.9	8.9*	8.5	8.7*	16.2	
4.5														9.6*	9.6*	9.1*	9.1*			8.8	8.9*	7.8	8.6*	15.8	
3.0														10.3*	10.3*	9.6*	9.6*			8.6	9.2*	7.3	8.5*	16.2	
1.5														11.1*	11.1*	10.1	10.1*			8.4	9.5*	6.9	8.6*	16.4	
0														16.1*	16.1*	13.5*	13.5*			9.7	10.7*	6.7	8.7*	16.5	
-1.5														16.7	17.5*	13.5	14.6*			9.3	11.2*	6.6	9.0*	16.5	
-3.0														15.9	18.5*	12.9	15.4*			9.0	11.7*	6.6	9.3*	16.3	
-4.5														15.4	19.2*	12.4	16.0*			8.7	12.0*	6.8	9.9*	16.0	
-6.0														15.1	19.5*	12.2	16.3*			8.6	12.1*	7.1	10.1*	15.5	
-7.5														19.5	23.6*	15.0	19.3*			8.6	11.9*	7.7	10.3*	14.8	
-9.0	16.6*	16.6*	20.9*	20.9*	21.4*	21.4*	19.5	23.6*	15.0	19.3*	12.1	16.2*	10.0	13.8*	8.6	11.9*					8.5	10.5*	14.0		
-10.5	23.4*	23.4*	29.2*	29.2*	26.0*	26.0*	20.2	21.2*	15.4	17.5*	12.5	14.7*	10.5	12.1*	8.7	11.2*					9.8	10.6*	12.9		
	32.2*	32.2*	28.6*	28.6*	22.8*	22.8*	18.7*	18.7*	15.4*	15.4*	12.5*	12.5*									10.4*	10.4*	11.5		
					17.9*	17.9*	14.5*	14.5*	11.1*	11.1*											9.8*	9.8*	9.6		

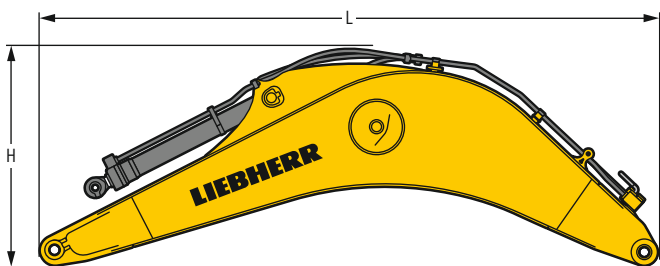
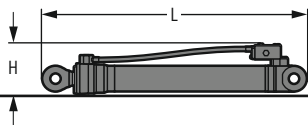
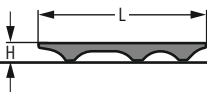
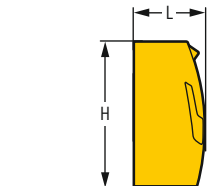
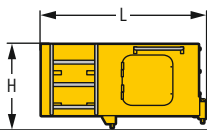
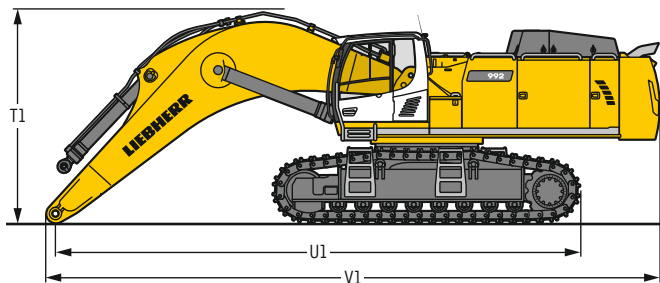
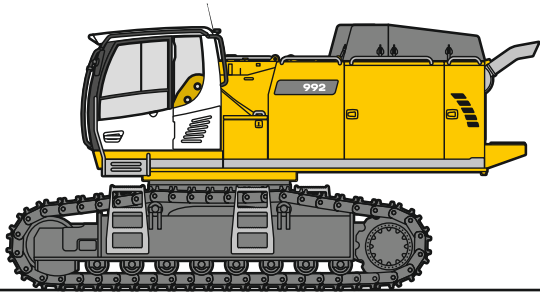
Height Can be slewed through 360° In longitudinal position of undercarriage Max. reach * Limited by hydr. capacity

The load values are quoted in tons (t) at stick end (without bucket), and may be swung 360° on firm and even ground. Adjacent values are valid for the undercarriage when in the longitudinal position. Capacities are valid for 600 mm wide track pads. Indicated loads are based on ISO 10567 standard and do not exceed 75% of tipping or 87% of hydraulic capacity (indicated via *). Without bucket cylinder, link and lever the lift capacities will increase by 1,320 kg. Lifting capacity of the excavator is limited by machine stability and hydraulic capacity.

According to European Standard, EN 474-5: In the European Union excavators have to be equipped with an overload warning device, a load diagram and automatic safety check valves on hoist cylinders and stick cylinder(s), when they are used for lifting operations which require the use of lifting accessories.

Determine maximum load lift from load lift chart displayed in the operator's cab or from load lift chart detailed in the operator's manual supplied with the machine.

Dimensions and weights



Basic machine

Track pads	mm	500	600	750
Weight with backhoe equipment and HD undercarriage without counterweight	kg	51,050	51,800	52,900
Weight with shovel equipment and HD undercarriage without counterweight	kg	51,150	51,900	53,000
Weight with backhoe equipment and LC-V undercarriage without counterweight	kg	56,400	57,200	58,350

Machine without stick

		HD	LC-V
T1 Mono boom 7.20 m	mm	4,150	4,250
Mono boom 8.60 m	mm	4,500	4,550
Mono boom 10.50 m	mm	4,900	5,000
U1 Mono boom 7.20 m	mm	10,350	10,400
Mono boom 8.60 m	mm	13,450	13,400
Mono boom 10.50 m	mm	13,650	13,800
V1 Mono boom 7.20 m	mm	11,950	11,900
Mono boom 8.60 m	mm	11,700	11,850
Mono boom 10.50 m	mm	15,450	15,400

Cab elevation

		800 mm
L Length	mm	1,890
H Height	mm	925
Width	mm	1,370
Weight	kg	600

Counterweight

		Std	heavy
L Length	mm	775	775
H Height	mm	1,595	1,595
Width	mm	3,360	3,360
Weight	kg	14,100	16,000

Upper protection screen

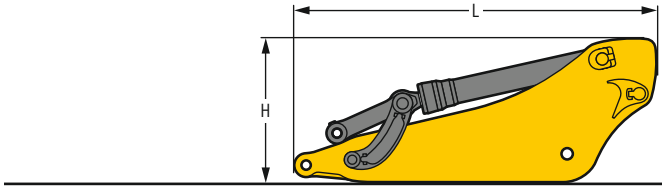
L Length	mm	1,960
H Height	mm	190
Width	mm	1,110
Weight	kg	75

Hoist cylinders (two)

L Length	mm	2,920
H Height	mm	550
Width	mm	400
Weight	kg	2 x 1,050

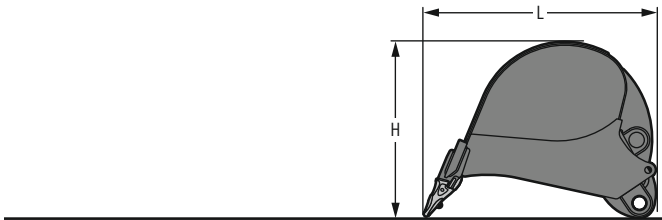
Mono boom with stick cylinder

Boom length	m	7.20	8.60	10.50
L Length	mm	7,550	8,950	10,850
H Height	mm	2,700	2,800	3,050
Width	mm	1,460	1,460	1,460
Weight	kg	9,500	10,400	11,500



Stick with bucket cylinder

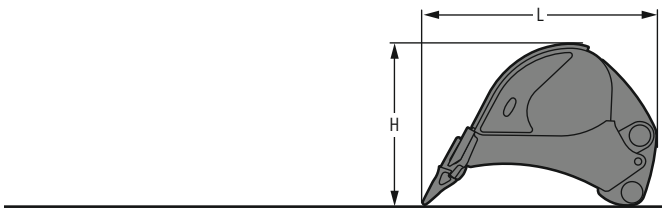
Stick length	m	2.90	3.30	3.80	4.70	5.80
L Length	mm	4,050	4,450	4,900	5,800	6,900
H Height	mm	1,700	1,650	1,500	1,450	1,400
Width	mm	900	900	900	900	900
Weight	kg	4,450	4,600	4,800	5,150	5,100



Backhoe buckets

Std

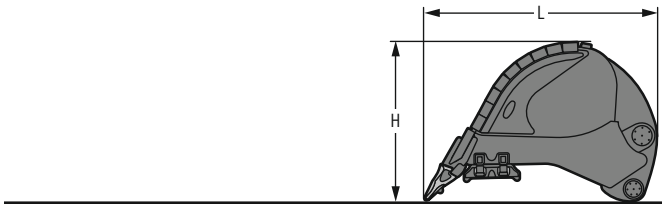
Cutting width	mm	1,450	1,800	2,000	2,200	2,200	2,300	2,300	2,500
Capacity	m³	2.60	3.60	4.10	4.60	5.20	5.60	6.20	6.80
L Length	mm	2,650	2,650	2,650	2,650	2,750	2,750	2,850	2,850
H Height	mm	2,100	2,100	2,100	2,100	2,150	2,150	2,150	2,150
Width	mm	1,500	1,850	2,050	2,250	2,250	2,350	2,350	2,550
Weight	kg	3,400	3,900	4,100	4,450	4,650	4,850	5,050	5,400



Backhoe buckets

HD

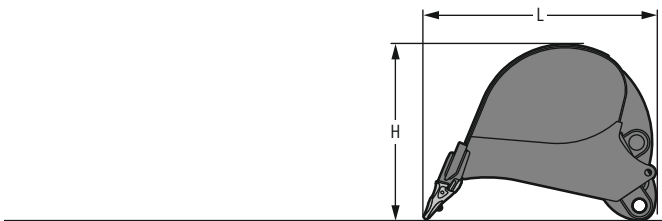
Cutting width	mm	1,450	1,800	2,000	2,200	2,200	2,300	2,300
Capacity	m³	2.60	3.60	4.10	4.60	5.20	5.60	6.20
L Length	mm	2,650	2,650	2,650	2,650	2,750	2,750	2,850
H Height	mm	2,100	2,100	2,100	2,100	2,150	2,150	2,150
Width	mm	1,500	1,850	2,050	2,250	2,250	2,350	2,350
Weight	kg	3,750	4,350	4,700	5,100	5,300	5,550	5,800



Backhoe buckets

HDV

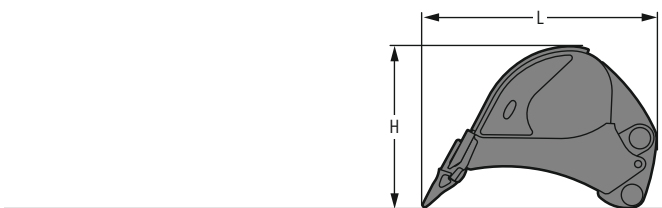
Cutting width	mm	1,800	2,000	2,200	2,200	2,300	2,300
Capacity	m³	3.70	4.20	4.70	5.20	5.70	5.70
L Length	mm	2,650	2,650	2,650	2,750	2,750	2,750
H Height	mm	2,150	2,150	2,150	2,200	2,200	2,200
Width	mm	1,850	2,050	2,250	2,250	2,350	2,350
Weight	kg	5,200	5,600	5,850	6,250	6,500	6,500



Backhoe buckets R 966

Std

Cutting width	mm	1,400	1,700	1,950	2,150	1,950	2,150	2,250	2,450
Capacity	m³	2.00	2.50	3.00	3.50	4.00	4.50	5.00	5.50
L Length	mm	2,300	2,300	2,300	2,300	2,500	2,500	2,500	2,500
H Height	mm	1,550	1,550	1,550	1,550	1,800	1,800	1,800	1,800
Width	mm	1,450	1,750	2,000	2,200	2,000	2,200	2,300	2,500
Weight	kg	2,500	2,850	3,100	3,350	3,600	3,800	3,950	4,200

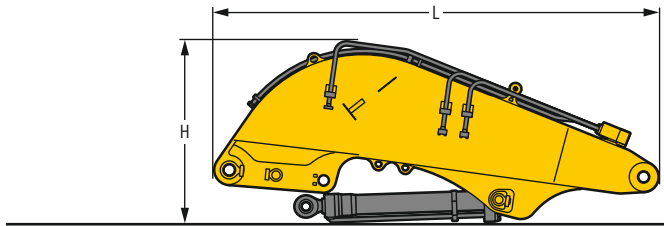


Backhoe buckets R 966

HD

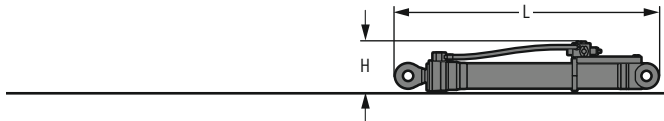
Cutting width	mm	1,450	1,750	2,000	2,200	2,000	2,200
Capacity	m³	2.00	2.50	3.00	3.50	4.00	4.50
L Length	mm	2,400	2,400	2,400	2,400	2,650	2,650
H Height	mm	1,600	1,600	1,600	1,600	1,800	1,800
Width	mm	1,500	1,800	2,050	2,250	2,050	2,250
Weight	kg	3,100	3,600	3,900	4,300	4,500	4,850

Dimensions and weights



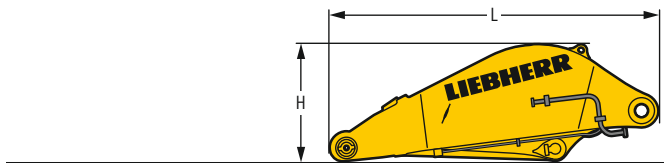
Shovel boom

L Length	mm	4,950
H Height	mm	2,050
Width	mm	1,650
Weight without crowd cylinder	kg	7,300
Weight crowd cylinder	kg	2 x 450



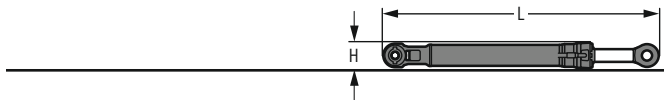
Shovel hoist cylinders (two)

L Length	mm	2,920
H Height	mm	550
Width	mm	450
Weight	kg	2 x 1,100



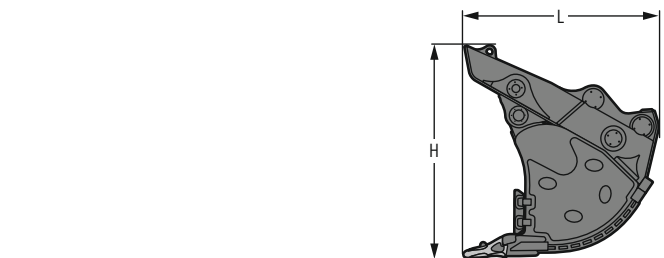
Shovel stick

L Length	mm	3,660
H Height	mm	1,300
Width	mm	1,800
Weight	kg	4,650



Shovel bucket cylinders (two)

L Length	mm	3,050
H Height	mm	450
Width	mm	450
Weight	kg	2 x 625



Front shovels

Cutting width	mm	2,700	2,700	2,700	2,700
Capacity	m ³	5.10	5.40	5.60	6.00
L Length	mm	2,600	2,500	2,620	2,550
H Height	mm	2,700	2,440	2,470	2,465
Width	mm	2,700	2,700	2,700	2,700
Weight					
Level I	kg	8,450	-	8,750	9,950
Level II	kg	9,200	-	9,500	10,700
Level III	kg	10,150	10,600	-	-

Serial equipment

Undercarriage

Lashing eyes
Sprocket with dirt ejector
Track and carrier rollers, sealed and lifetime-lubricated
Travel motor housing protection

Uppercarriage

Access platforms without protruding parts
Anti-skid surfaces
Automatic swing brake lock
Centralised lubrication system (automatic)
DEF tank lockable access hatch
Engine hood with gas spring opening
Extended tool set including tool box
Handrails
Liebherr Power Efficiency - Engine Control
Lockable fuel tank cap with padlock
Lockable service doors
Lockable storage box
Main switch, accessible from ground level
Pre-heating system for fuel
Protection grid on radiator fan
Sound insulation
Swing-out radiators
Windshield washer fluid tank

Hydraulic system

Dedicated swing circuit
Filter with integrated fine filters
Hydraulic pressure measuring ports
Hydraulic tank shut-off valve
Magnetic rod
Pressure accumulator for controlled lowering of equipment with engine turned off

Engine

Air filter with automatic dust ejector
Automatic engine idling / speed increase, controlled via joystick sensors
Common-Rail injection system
Exhaust gas after-treatment system - DOC + DPF + SCR
Fixed geometry turbocharger
Fuel fine filter
Fuel pre-filter and water separator
Fuel priming pump
Intercooler
Power Pack EU Stage V
Stepless adjustable engine speed

Cab

9" multifunction colour touchscreen
Air conditioning, automatic, tri-zone, controlled via display
Armrests adjustable in length, height and inclination
Bottle holder
Cab door sliding windows
Cigarette lighter
Coat hook
DEF consumption on touchscreen
DEF level on touchscreen
Electric socket in cabin (12 V)
Electric socket in cabin (24 V)
Emergency hammer
Engine oil level on touchscreen
Footrest
Fuel consumption on touchscreen
Fuel level on touchscreen
Impact resistant roof window
Impact resistant two-piece windscreen
Interior lighting
Laminated right hand side window
LiDAT Plus (Liebherr data transfer system)*
Mobile phone storage net
Modetronic
Movement priority between swing and boom, adjustable via touchscreen
Rain hood over front window opening
Rearview mirror
Rear view monitoring camera
Rear view monitoring camera distance gauge
Rear window emergency exit
Right hand side view monitoring camera
Roll-down sun blinds for windscreen and roof window
Rubber floor mat, fixed on floor and removable
Storage box
Storage nets
Storage spaces
Tilttable console left
Tinted windows
Visco-elastic damping
Windscreen wiper and washer
Work mode selector

Equipment

Anti-drift system boom cylinders
Anti-drift system stick cylinder
Boom cylinders regeneration
Pipe fracture safety valve for stick cylinder
Pipe fracture safety valves for boom cylinders
Pivot points made of cast steel
SAE split flanges on high pressure lines
Stick bottom protection
Stick cylinder regeneration

* optionally extendable after one year

Equipment standard / option

Undercarriage

Chain guide 3 pieces	•
Chain guide 4 pieces	+
Chain guide full length	+
Reinforced cover and base plate for undercarriage centre section	+
Reinforced cover plate for centre section (LC-V undercarriage)	+
Screws protection for sideframe (LC-V undercarriage)	+
Special painting	+
Steps	•
Track pads double grouser 500 mm, chamfered	+
Track pads double grouser 600 mm, chamfered	•
Track pads double grouser 750 mm, chamfered	+
Track pads double grouser 900 mm, chamfered	+
Travel drive gearbox protection	+
Undercarriage HD	+
Undercarriage LC-V	+
Undercarriage protection plate for drop-ball application	+

Upper-carriage

Air pre-filter with cyclonical dust trap	+
Boxing ring	+
Catwalks left and right	•
Catwalk wide with railing	+
Counterweight heavy 16.0t	+
Counterweight standard 14.1 t	•
Electric socket on uppercarriage (24 V)	+
Filter for hydraulic hammer return flow	+
Fixed cab riser 800 mm	+
Headlight on uppercarriage, lateral right, LED+, 1 piece	+D
Headlights on uppercarriage, front, LED, 2 pieces, protections included	•D
Headlights on uppercarriage, front, LED+, 2 pieces, protections included	+D
Headlights on uppercarriage, rear, LED+, 2 pieces	+D
Lighting for tank area	+D
Lighting for uppercarriage access	+D
Radiator fine mesh protection grid	+
Reversible fan drive	+
Skyview 360°	+
Special painting	+
Swing ring and lubrication hoses protection	+
Tank refilling pump fuel	+
Wiggins coupling for fuel	+

Hydraulic system

Bypass filter for hydraulic oil	+
Liebherr hydraulic oil	•
Liebherr hydraulic oil, adapted for extreme climate conditions	+
Liebherr hydraulic oil, biodegradable	+

Engine

Automatic engine shutdown after idling	+
Engine shut-down with overrun	+
Lighting for engine compartment	+D


Cab

2" seat belt with retractor	●
3" seat belt with retractor, orange colour	+
4-points seat belt	+
Acoustic travel alarm deactivatable	+
Auxiliary heater programmable	+
Bottom windscreen wiper	+
Coming / Leaving Home	+ ¹⁾
Cool box (12 V)	+
Dark tinted windows	+
Electrically adjustable and heated outside rear-view mirrors	+
Electronic immobiliser	+
Emergency stop in cab	+
FGPS front guard tiltable	+
Fire extinguisher	+
First-aid box	+
FOPS top guard	+
Handrests elevated for joysticks	+
Headlights on cab, front, LED, 2 pieces	● ¹⁾
Headlights on cab, front, LED+, 2 pieces	+ ¹⁾
Headlights on cab roof, front, LED+, 2 pieces	+ ¹⁾
High pressure circuit switchable on pedals or mini-joystick	+
High pressure circuit with Tool Control (20 attachment adjustments on display)	+
Lighting for cabin access	+ ¹⁾
Luminosity control (LED+ headlights)	+ ¹⁾
Medium pressure circuit	+
Mini-joysticks proportional	+
Operator seat Comfort	●
Operator seat Premium	+
Overload warning system	+
Radio Comfort	+
Radio pre-installation	●
Roof sun shield	+
Roof window wiper	+
Rotating beacon on cabin, LED, 1 piece	+
Shortkey button on joystick configurable	●
Special painting	+
Sun visor	+


Equipment

Boom bottom protection	+
Boom cylinder rods protection	+
Bucket cylinder rod protection	+
Bucket Fill Assist	+
Centralised lubrication extended for connecting link	+
Floating boom	+
Headlights on boom, LED, 2 pieces, protections included	● ¹⁾
Headlights on boom, LED+, 2 pieces, protections included	+ ¹⁾
Mono boom 7.20 m	+
Mono boom 8.60 m	+
Mono boom 10.50 m	+
Preparation for ripper tooth	+
Quick coupler SWA 92 hydraulic	+
Shovel boom 4.60 m	+
Shovel stick 3.30 m	+
Special painting	+
Stick 2.90 m	+
Stick 3.30 m	+
Stick 3.80 m	+
Stick 4.70 m	+
Stick sealed 5.80 m	+

● = Standard, + = Option

¹⁾ Equipment not individually available, but only as predefined packages

Non-exhaustive list, please contact us for further information.

Options and / or special equipment, supplied by vendors other than Liebherr, are only to be installed with the knowledge and approval of Liebherr in order to retain warranty.

The Liebherr Group



Global and independent: more than 70 years of success

Liebherr was founded in 1949 when, with the development of the world's first mobile tower crane, Hans Liebherr laid the foundations for a family business now employing nearly 50,000 people and comprising over 140 companies across every continent.

The parent company is Liebherr-International AG in Bulle, Switzerland, whose associates are exclusively members of the Liebherr family.

Leaders and pioneers

Liebherr is a pioneer and its forward-looking approach has seen it make important contributions to technology history over a wide variety of industries. Employees throughout the world continue to share the courage of the founder, sharing a passion to produce innovative products and a determination to provide world-leading equipment and machinery.

Diversified portfolio

The company is one of the world's biggest construction equipment manufacturers and provides high-quality, user-oriented products and services to sectors including: earthmoving, material handling, deep foundations, mining, mobile and crawler cranes, tower cranes, concrete production and distribution, maritime cranes, aerospace and transportation, gear technology and automation, refrigeration and freezing, components and hotels.

Customised care

Liebherr solutions are characterised by precision, implementation and longevity. The company is committed to technological excellence and to providing customers with solutions that match their needs exactly. That customer focus does not end with delivery of a product but continues through a comprehensive range of back-up and support services.

www.liebherr.com

Liebherr-France SAS

2 avenue Joseph Rey, B.P. 90287 • 68005 Colmar Cedex, France • Phone +33 389 213030
info.lfr@liebherr.com • www.liebherr.com • www.facebook.com/LiebherrConstruction