

---

# LH 80 Port Litronic

---

## LIEBHERR

Material handling machine



### Generation

6

### Operating weight

166,900–274,900 lb\*

### Engine

308 HP / 230 kW

Stage V

Stage IIIA (compliant)

Tier 4 Final

Electric

### System performance

418 kW (Diesel)

408 kW (Electric)

\* Without attachment

## Performance

Power plus speed –  
Redefined performance

## Economy

Good investment –  
Savings for long-term

## Reliability

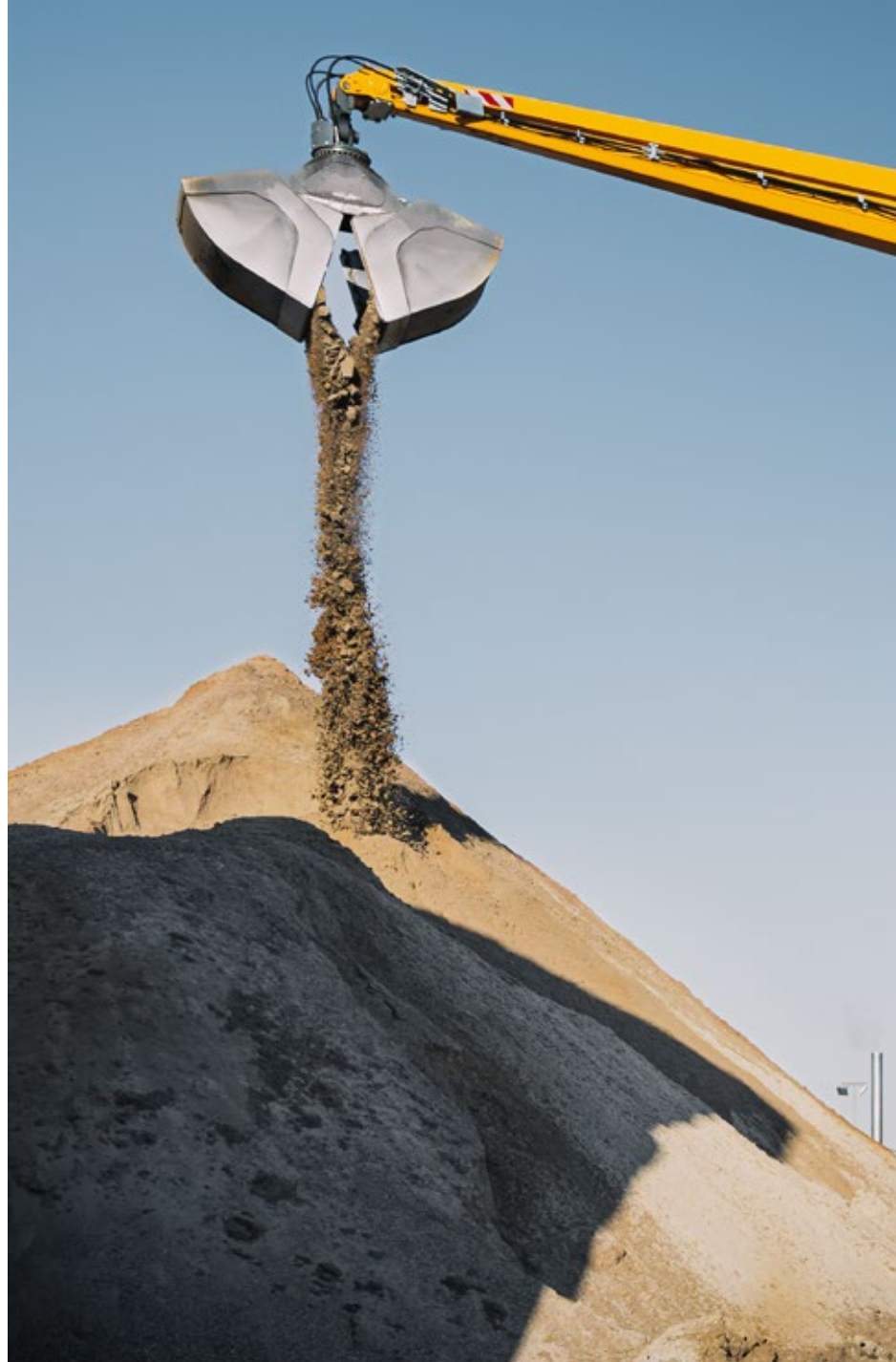
Durability and sustainability –  
Quality down to the last detail

## Comfort

Perfection at a glance –  
When technology is comfortable

## Maintainability

Efficiency bonus –  
Even with maintenance and service



### LH 80 M Port Litronic

**Operating weight**  
166,900–194,900 lb\*

**Engine**  
308 HP / 230 kW  
Stage V  
Stage IIIA (compliant)  
Tier 4 Final  
Electric

**System performance**  
418 kW (Diesel)  
408 kW (Electric)

### LH 80 C Port Litronic

**Operating weight**  
176,400–204,100 lb\*

**Engine**  
308 HP / 230 kW  
Stage V  
Stage IIIA (compliant)  
Tier 4 Final  
Electric

**System performance**  
418 kW (Diesel)  
408 kW (Electric)

\* Without attachment



## LH 80 M High Rise Port Litronic

**Operating weight**  
195,800–226,000 lb\*

**Engine**  
308 HP / 230 kW  
Stage V  
Stage IIIA (compliant)  
Tier 4 Final  
Electric

**System performance**  
418 kW (Diesel)  
408 kW (Electric)

## LH 80 C High Rise Port Litronic

**Operating weight**  
197,300–233,000 lb\*

**Engine**  
308 HP / 230 kW  
Stage V  
Stage IIIA (compliant)  
Tier 4 Final  
Electric

**System performance**  
418 kW (Diesel)  
408 kW (Electric)

## LH 80 C Gantry Port Litronic

**Operating weight**  
241,600–274,900 lb\*

**Engine**  
308 HP / 230 kW  
Stage V  
Stage IIIA (compliant)  
Tier 4 Final  
Electric

**System performance**  
418 kW (Diesel)  
408 kW (Electric)



# Technical data

## Diesel engine

|                               |   |
|-------------------------------|---|
| <b>Rating</b>                 |   |
| per SAE J1349                 | 308 HP (230 kW) at 1,800 rpm  |
| per ISO 9249                  | 313 HP (230 kW) at 1,800 rpm  |
| <b>Model</b>                  | Liebherr D946   |
| <b>Type</b>                   | 6 cylinder in-line  |
| Bore / Stroke                 | 5.1 / 5.9 in  |
| Displacement                  | 729 in <sup>3</sup>   |
| <b>Engine operation</b>       | 4-stroke diesel<br>Common-Rail<br>Turbo-charged and after-cooled<br>Reduced emissions |
| <b>Air cleaner</b>            | Dry-type air cleaner with pre-cleaner, primary and safety elements                    |
| <b>Engine idling</b>          | Sensor controlled   |
| <b>Electrical system</b>      |   |
| Voltage                       | 24 V  |
| Batteries                     | 2 x 180 Ah / 12 V   |
| Alternator                    | Three-phase current 28 V / 140 A  |
| <b>Stage V</b>                |   |
| Harmful emissions values      | According to regulation (EU) 2016/1628  |
| Emission control              | Liebherr-SCRFilter technology   |
| Fuel tank                     | 174 gal   |
| Urea tank                     | 17 gal  |
| <b>Stage IIIA (compliant)</b> |   |
| Harmful emissions values      | In accordance with ECE-R.96 Power Band H  |
| Fuel tank                     | 174 gal   |
| <b>Tier 4 Final</b>           |   |
| Harmful emissions values      | In accordance with 40CFR1039 (EPA) / 13CCR (CARB)                                     |
| Emission control              | Liebherr-SCR technology   |
| Fuel tank                     | 174 gal   |
| Urea tank                     | 17 gal  |

## Electric motor

|  |  |
|--|--|
| <b>Rating</b>                          | 220 kW at 1,800 rpm  |
| <b>Type</b>                            | Three-phase squirrel cage motor  |
| <b>Secondary electric motor</b>        | Electric motor auxiliary equipment (air-conditioning compressor, alternator 24 V)<br>15 kW |
| <b>Electrical system energy supply</b> | Frequency converter fed drive system<br>Heavy-duty version                                 |
| <b>Supply voltage</b>                  |  |
| Low voltage                            | 380 V, 400 V   |
| Frequency                              | 50 / 60 Hz   |
| <b>Engine idling</b>                   | Sensor controlled  |
| <b>Electrical system</b>               | Battery-assisted<br>Control system, lighting, diagnostics system                           |
| Voltage                                | 24 V   |
| Batteries                              | 2 x 135 Ah / 12 V  |
| Alternator                             | Three-phase current 28 V / 140 A   |

Deviating parameters of the power supply system must always be clarified with Liebherr-Hydraulikbagger GmbH.

## Cooling system

|                       |  |
|-----------------------|--|
| <b>Diesel engine</b>  | Water-cooled<br>Cooling system, consisting of a cooling unit for water and charge air and a 2nd cooler for hydraulic oil, each with an infinitely variable, thermostatically controlled fan drive system |
| <b>Electric motor</b> | Air-cooled<br>Cooling system for hydraulic oil with an infinitely variable, thermostatically controlled fan drive system   |

## Hydraulic controls

|                             |   |
|-----------------------------|---|
| <b>Power distribution</b>   | Via control valves with integrated safety valves, simultaneous actuation of chassis and equipment. Swing drive in separate closed circuit |
| <b>Servo circuit</b>        |   |
| Equipment and swing         | With electro-hydraulic pilot control and proportional joystick levers   |
| Chassis mobile              | Electro-proportional via foot pedal   |
| Chassis crawler             | With electric proportionally functioning foot pedals or adjusted with plugable levers   |
| <b>Additional functions</b> |   |
| Proportional control        | Via switch or electro-proportional foot pedals<br>Proportionally acting transmitters on the joysticks for additional hydraulic functions  |

## Hydraulic system

|  |   |
|--|---|
| <b>Hydraulic pump</b>                        |   |
| For equipment and travel drive               | 2 Liebherr axial piston variable displacement pumps (double construction)   |
| Max. flow                                    | 2 x 96 gpm  |
| Max. pressure                                | 5,076 psi   |
| For swing drive                              | Reversible axial piston variable displacement pump, closed-loop circuit   |
| Max. flow                                    | 52 gpm  |
| Max. pressure                                | 5,366 psi   |
| <b>Hydraulic pump regulation and control</b> | 2 circuit Liebherr-Synchron-Comfort-system (LSC) with electronic engine speed sensing regulation, pressure and flow compensation, automatic oil flow optimizer  |
| <b>Hydraulic tank</b>                        | 90 gal  |
| <b>Hydraulic system</b>                      | 251 gal   |
| <b>Filtration</b>                            | 2 main return filters with integrated partial micro filtration (5 µm)   |
| <b>MODE selection</b>                        | Adjustment of engine and hydraulic performance via a mode pre-selector to match application, e.g. for especially economical and environmentally friendly operation or for maximum material handling and heavy-duty jobs |
| S (Sensitive)                                | Mode for precision work and lifting through very sensitive movements  |
| E (Eco)                                      | Mode for especially economical and environmentally friendly operation   |
| P (Power)                                    | Mode for high performance with low fuel consumption   |
| P+ (Power-Plus)                              | Mode for highest performance and for very heavy duty applications, suitable for continuous operation  |
| <b>Engine speed and performance setting</b>  | Stepless alignment of engine output and hydraulic power via engine speed  |
| Option                                       | Tool Control: 20 pre-adjustable pump flows and pressures for add-on attachments   |

## Swing drive

|                      |   |
|----------------------|---|
| <b>Drive</b>         | Liebherr axial piston motor in a closed system, Liebherr planetary reduction gear |
| <b>Swing ring</b>    | Liebherr, sealed race ball bearing swing ring, internal teeth                     |
| <b>Swing speed</b>   | 0-6.5 rpm stepless  |
| <b>Swing torque</b>  | 103,996 lbf ft  |
| <b>Holding brake</b> | Wet multi-disc (spring applied, pressure released)                                |
| <b>Option</b>        | Slewing gear brake Comfort  |



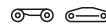
## Cab

|   |   |
|---|---|
| <b>Cab</b>                              | Safety cab structure with individual windscreens or featuring a slide-in subpart under the ceiling, work headlights integrated in the ceiling, a door with a sliding window (can be opened on both sides), large stowing and depositing possibilities, shock-absorbing suspension, sound damping insulating, tinted laminated safety glass, separate shades for the sunroof window and windscreen |
| High Rise / Gantry                      | Deviating from standard: safety cab structure with fixed built-in front and roof window made from impact-resistant laminated safety glass   |
| <b>Operator's seat Comfort</b>          | Air cushioned operator's seat with 3D-adjustable armrests, headrest, lap belt, seat heater, adjustable seat cushion inclination and length, lockable horizontal suspension, automatic weight adjustment, adjustable suspension stiffness, pneumatic lumbar vertebrae support and passive seat climatization with active coal  |
| <b>Operator's seat Premium (Option)</b> | In addition to operator's seat comfort: active electronic weight adjustment (automatic readjustment), pneumatic low frequency suspension and active seat climatization with active coal and ventilator  |
| <b>Arm consoles</b>                     | Joysticks with control consoles and swivel seat, folding left control console   |
| <b>Operation and displays</b>           | Large high-resolution operating unit, self-explanatory, color display with touchscreen, video-compatible, numerous setting, control and monitoring options, e.g. air conditioning control, fuel consumption respectively energy consumption, machine and attachment parameters  |
| <b>Air-conditioning</b>                 |   |
| Diesel engine                           | Automatic air-conditioning, recirculated air function, fast de-icing and demisting at the press of a button, air vents can be operated via a menu; recirculated air and fresh air filters can be easily replaced and are accessible from the outside; heating-cooling unit, designed for extreme outside temperatures, sensors for solar radiation, inside and outside temperatures               |
| Electric motor                          | In addition to diesel engine: stationary air conditioning function with external climate condenser – controlled by a weekly timer   |



## Equipment

|                                   |   |
|-----------------------------------|---|
| <b>Type</b>                       | Weight-optimized design for bulk and general cargo handling at optimal handling capacity. Complex and stable mountings of equipment and cylinders |
| <b>Hydraulic cylinders</b>        | Liebherr cylinders with special sealing and guide system and, depending on cylinder type, shock absorption  |
| <b>Energy recovering cylinder</b> | Liebherr gas cylinder with special sealing and control system   |
| <b>Bearings</b>                   | Sealed, low maintenance   |



## Undercarriage

|                   |  |
|-------------------|--|
| <b>Mobile</b>     |  |
| Versions          | Standard, High Rise  |
| Drive Standard    | One axle drive per drive axle with Liebherr axial piston motor and functional brake valve on both sides  |
| Drive High Rise   | One driven axle with transmission with Liebherr axial piston motor and functional brake valve on both sides  |
| Travel speed      | 0-6.2 mph stepless   |
| Joystick steering | 0-2.2 mph stepless (creeper speed) (Diesel)<br>0-1.9 mph stepless (creeper speed) (Electric)<br>0-5.0 mph stepless (High Rise)<br>0-3.1 mph stepless (creeper speed) (High Rise) (Diesel)<br>0-1.6 mph stepless (creeper speed) (High Rise) (Electric) |
| Driving operation | Automotive driving using accelerator pedal, cruise control function: storage of variable accelerator pedal positions   |
| Axles             | 198,400 lb drive axles; manual or automatic hydraulically controlled front axle oscillation lock   |
| Service brake     | Two circuit travel brake system with accumulator; wet and backlash-free disc brake   |
| Holding brake     | Wet multi-disc (spring applied, pressure released)   |
| Stabilization     | 4 point outriggers   |
| <b>Crawler</b>    |  |
| Versions          | SW, High Rise, Gantry  |
| Drive             | Liebherr compact planetary reduction gear with Liebherr axial piston motor per side of undercarriage   |
| Travel speed      |  |
| SW                | 0-2.5 mph stepless<br>0-1.6 mph stepless (creeper speed)   |
| High Rise         | 0-1.8 mph stepless<br>0-1.2 mph stepless (creeper speed)   |
| Gantry            | 0-2.2 mph stepless<br>0-1.6 mph stepless (creeper speed)   |
| Brake             | Functional brake valves on both sides  |
| Holding brake     | Wet multi-disc (spring applied, pressure released)   |
| Track pads        | Triple grouser, flat   |
| Tracks            | Sealed and greased   |

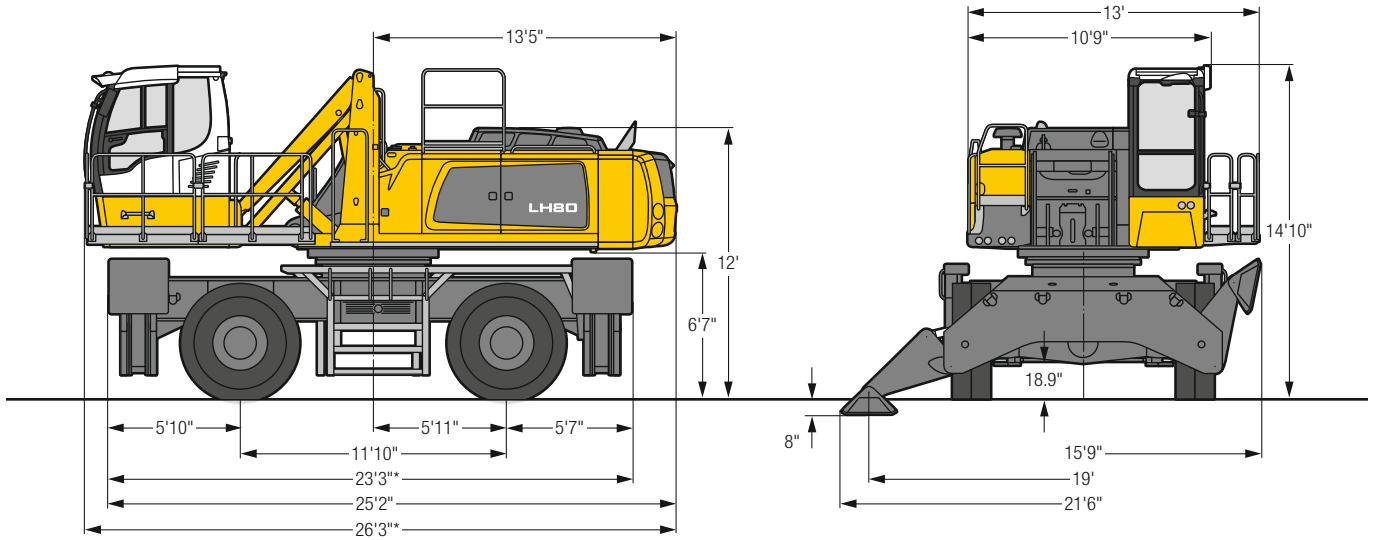


## Complete machine

|                       |   |
|-----------------------|---|
| <b>Lubrication</b>    | Liebherr central lubrication system for uppercarriage and equipment, automatically  |
| Mobile (Option)       | Liebherr central lubrication system for undercarriage, automatically                |
| <b>Steps system</b>   | Safe and durable access system with anti-slip steps; main components hot-galvanized |
| <b>Noise emission</b> |   |
| ISO 6396              | 70 dB(A) = L <sub>PA</sub> (inside cab)   |
| 2000/14/EC            | 105 dB(A) = L <sub>WA</sub> (surround noise)  |

# LH 80 M – Dimensions

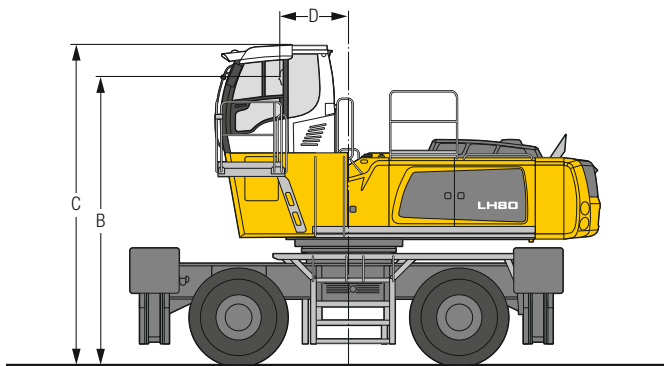
## Port



\* For electric machines, the length of the machine is increased accordingly by the trailing cable / cable reel system. Detailed dimensions are available on request.

# LH 80 M – Choice of cab elevation

## Cab elevation LFC (rigid elevation)

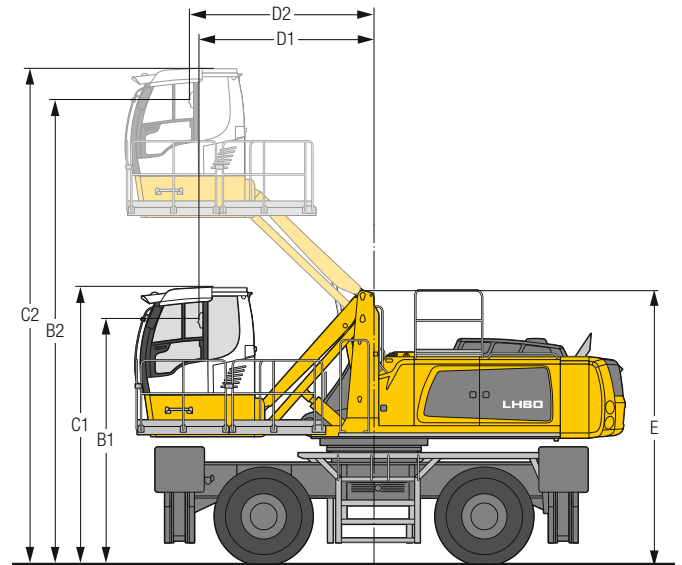


| Increase type | LFC 120 | LFC 200 |
|---------------|---------|---------|
| Height        | 3'11"   | 6'7"    |
| B             | 15' 5"  | 18'1"   |
| C             | 17' 1"  | 19'9"   |
| D             | 3' 8"   | 3'8"    |

A rigid cab elevation has a fixed eye level height. For a lower transport height, the shell of the cab can be removed and replaced by a transport device. The dimension C is in this machine design for all rigid cab elevations 13'.

Tires 23.5-25

## Cab elevation LHC (hydraulic elevation)

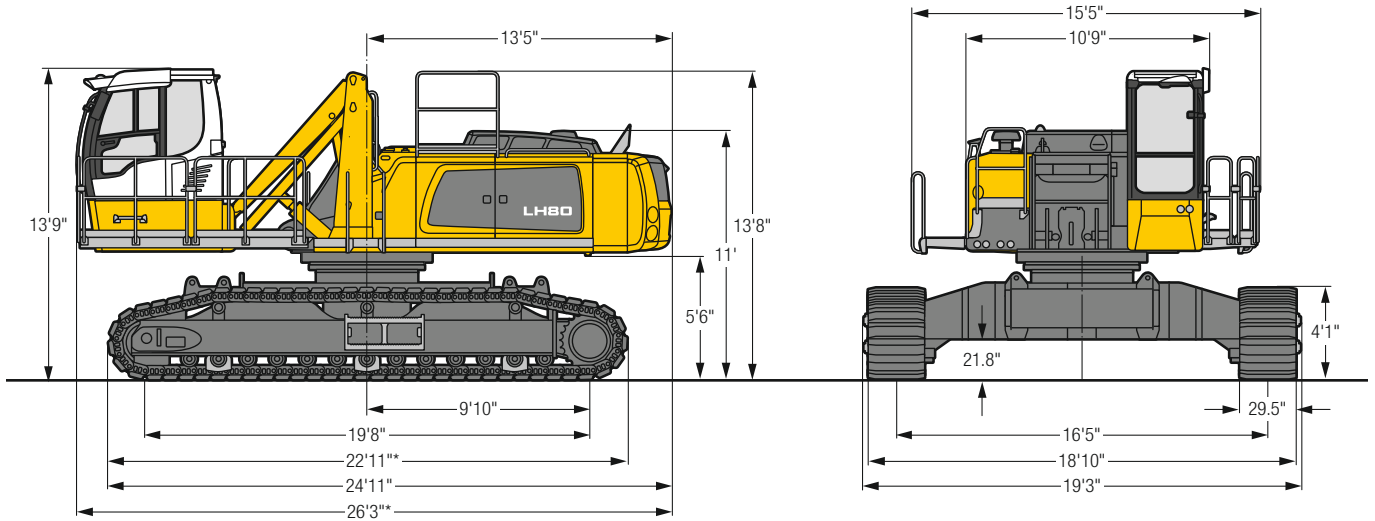


| Increase type | LHC 255 | LHC 340-35 | LHC 360-50 |
|---------------|---------|------------|------------|
| B1            | 11' 6"  | 12' 8"     | 13' 2"     |
| B2            | 19'10"  | 23'10"     | 24'10"     |
| C1            | 13' 2"  | 14' 4"     | 14'10"     |
| C2            | 21' 6"  | 25' 6"     | 26' 6"     |
| D1            | 5' 6"   | 9' 2"      | 9' 4"      |
| D2            | 5'11"   | 9' 2"      | 9'10"      |
| E             | 12'10"  | 14' 2"     | 14' 7"     |

The hydraulically adjustable cab allows the driver, that he can choose his field of view freely and at any time within the stroke.

# LH 80 C SW – Dimensions

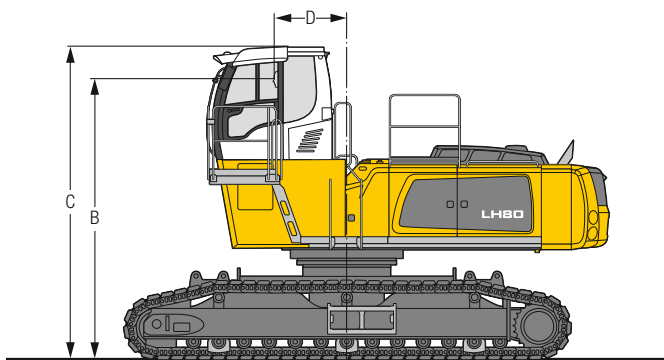
## Port



\* For electric machines, the length of the machine is increased accordingly by the trailing cable / cable reel system. Detailed dimensions are available on request.

# LH 80 C SW – Choice of cab elevation

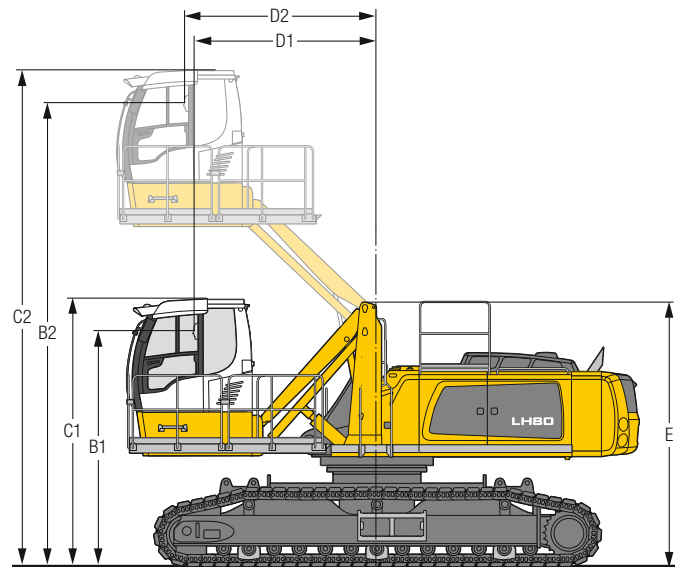
## Cab elevation LFC (rigid elevation)



| Increase type | LFC 120 | LFC 200 |
|---------------|---------|---------|
| Height        | 3'11"   | 6'7"    |
| B             | 14' 4"  | 17'     |
| C             | 16' 1"  | 18'8"   |
| D             | 3' 8"   | 3'8"    |

A rigid cab elevation has a fixed eye level height. For a lower transport height, the shell of the cab can be removed and replaced by a transport device. The dimension C is in this machine design for all rigid cab elevations 13'1".

## Cab elevation LHC (hydraulic elevation)

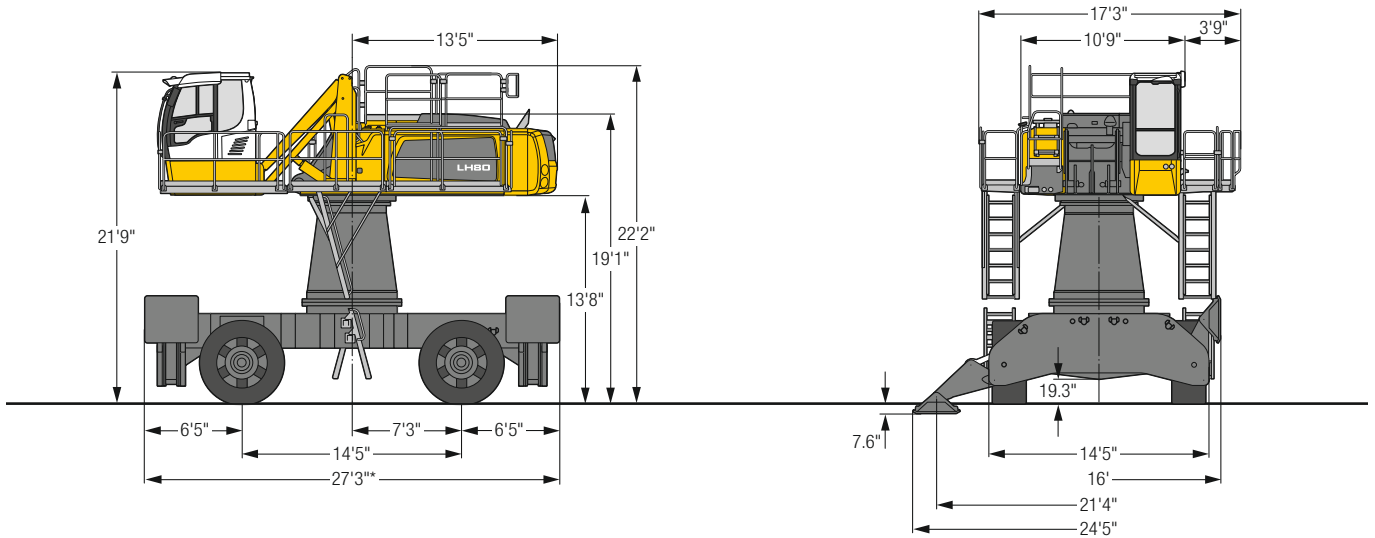


| Increase type | LHC 255 | LHC 340-35 | LHC 360-50 |
|---------------|---------|------------|------------|
| B1            | 10' 5"  | 11'7"      | 12' 1"     |
| B2            | 18' 9"  | 22'9"      | 23' 9"     |
| C1            | 12' 1"  | 13'3"      | 13' 9"     |
| C2            | 20' 6"  | 24'6"      | 25' 6"     |
| D1            | 5' 6"   | 9'2"       | 9' 4"      |
| D2            | 5'11"   | 9'2"       | 9'10"      |
| E             | 11' 9"  | 13'1"      | 13' 7"     |

The hydraulically adjustable cab allows the driver, that he can choose his field of view freely and at any time within the stroke.

# LH 80 M HR – Dimensions

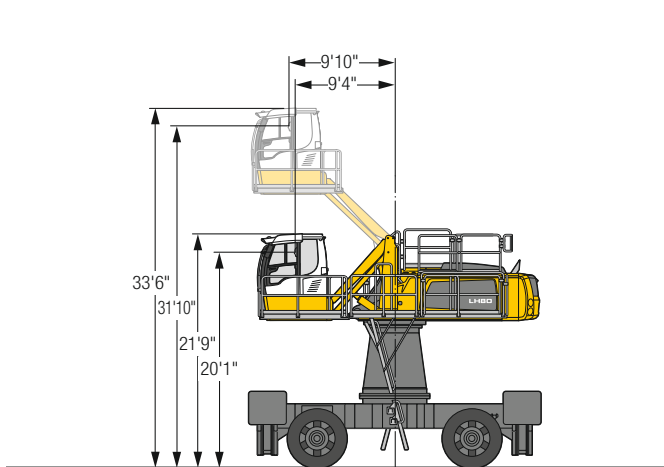
## Port



\* For electric machines, the length of the machine is increased accordingly by the trailing cable / cable reel system. Detailed dimensions are available on request.

# LH 80 M HR – Choice of cab elevation

## Cab elevation LHC (hydraulic elevation)

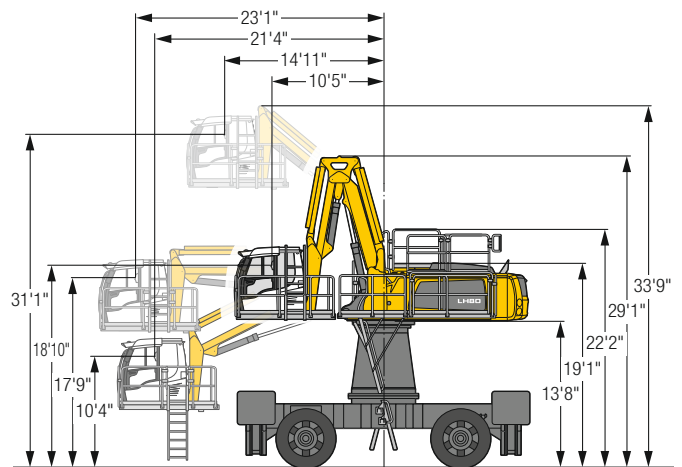


### Increase type

### LHC 360-50

The hydraulically adjustable cab allows the driver, that he can choose his field of view freely and at any time within the stroke.

## Cab elevation LHC-D (hydraulic elevation)



### Increase type

### LHC-D 730

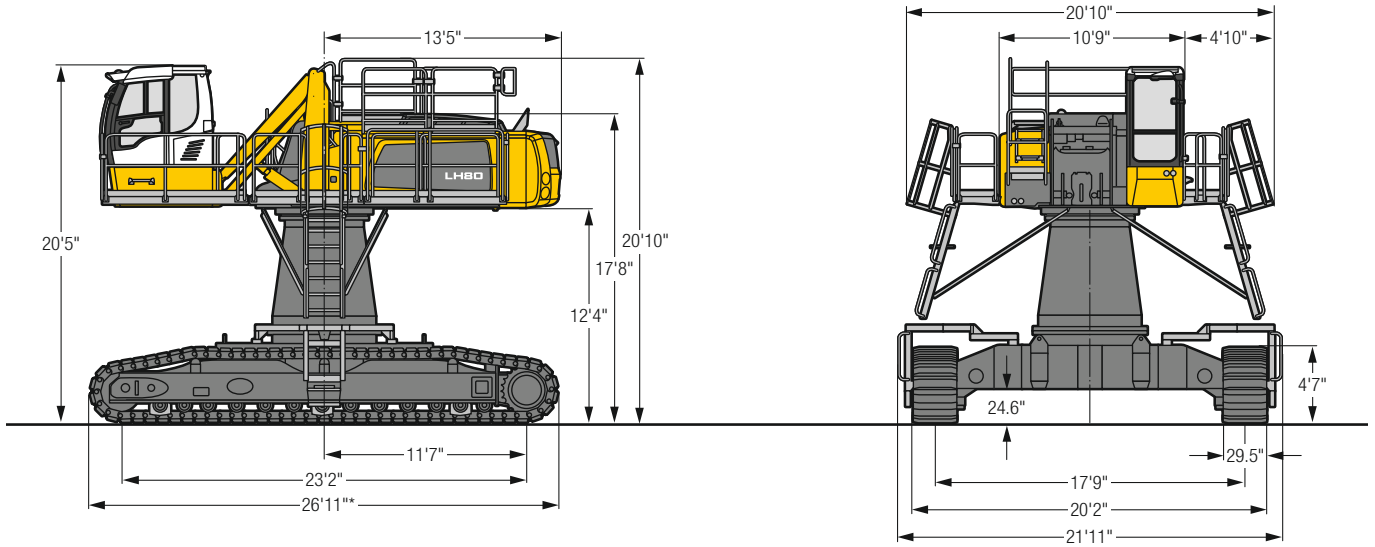
The hydraulically adjustable cab allows the driver, that he can choose his field of view freely and at any time within the stroke.

Tires 26.5-25



# LH 80 C HR – Dimensions

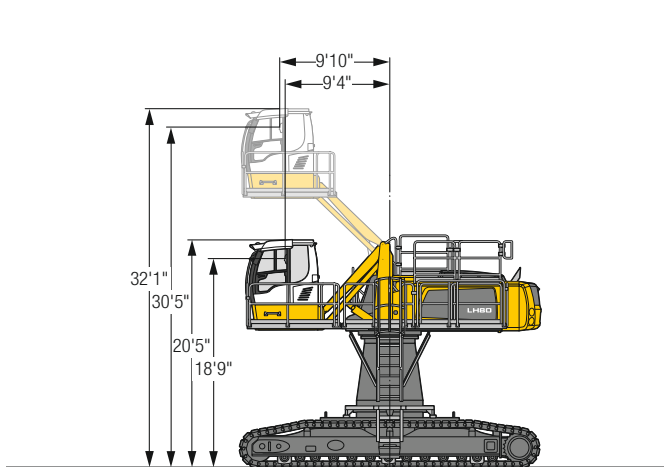
## Port



\* For electric machines, the length of the machine is increased accordingly by the trailing cable / cable reel system. Detailed dimensions are available on request.

# LH 80 C HR – Choice of cab elevation

## Cab elevation LHC (hydraulic elevation)

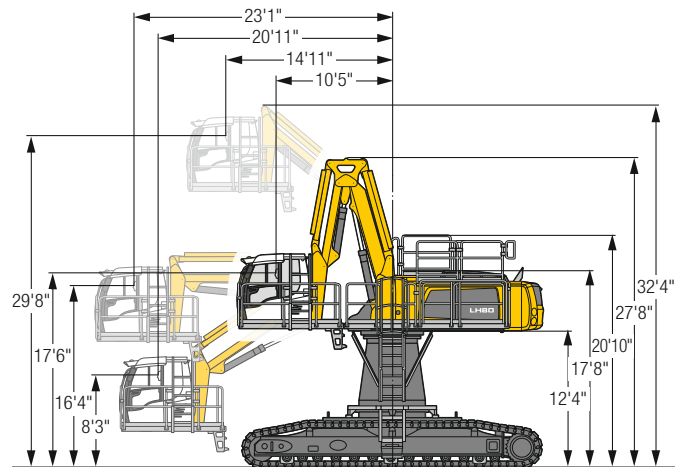


### Increase type

### LHC 360-50

The hydraulically adjustable cab allows the driver, that he can choose his field of view freely and at any time within the stroke.

## Cab elevation LHC-D (hydraulic elevation)



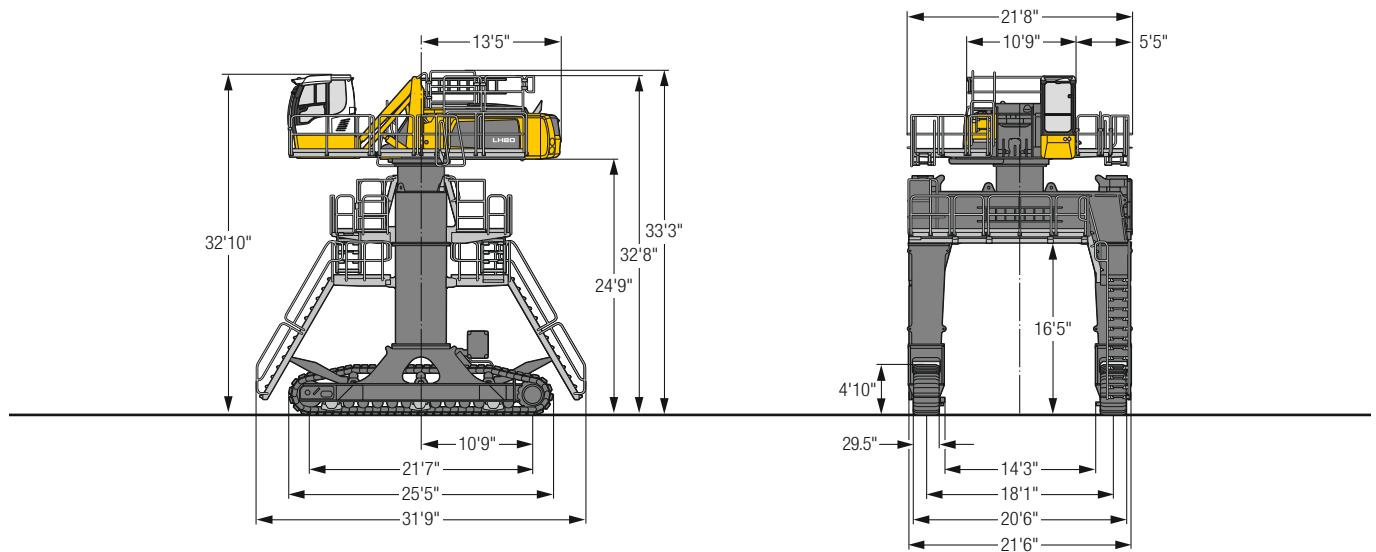
### Increase type

### LHC-D 730

The hydraulically adjustable cab allows the driver, that he can choose his field of view freely and at any time within the stroke.

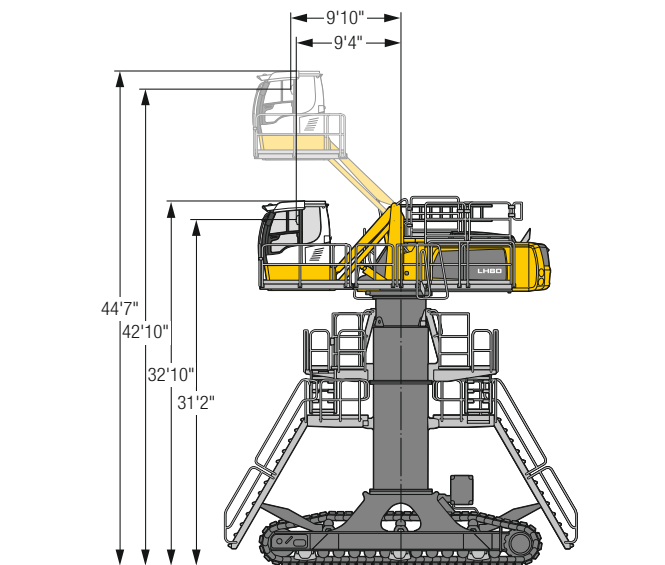
# LH 80 C Gantry – Dimensions

## Port



# LH 80 C Gantry – Cab elevation

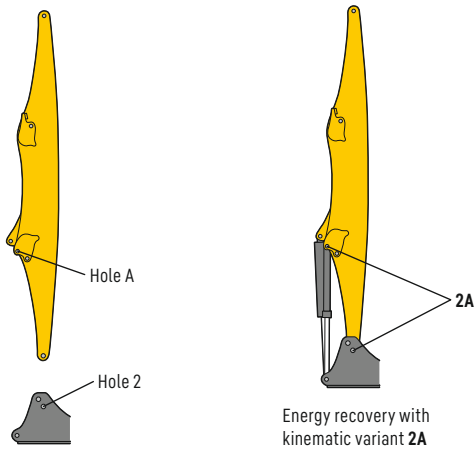
## Cab elevation LHC (hydraulic elevation)



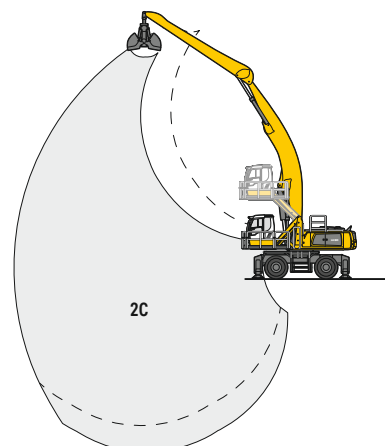
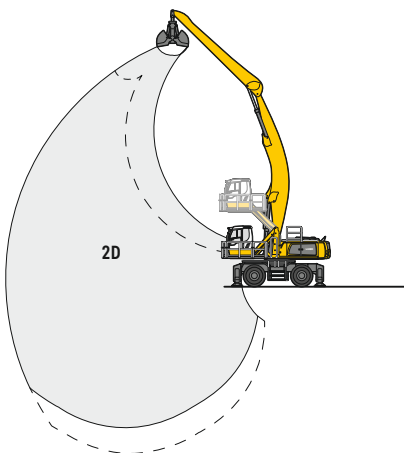
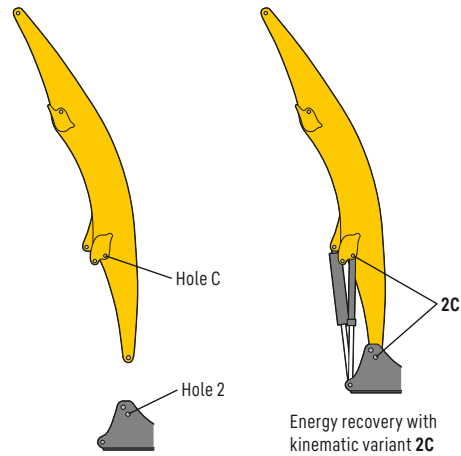
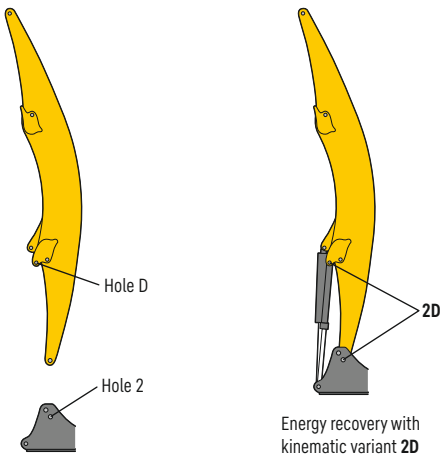
**Increase type** LHC 360-50

The hydraulically adjustable cab allows the driver, that he can choose his field of view freely and at any time within the stroke.

## Kinematic variant 2A



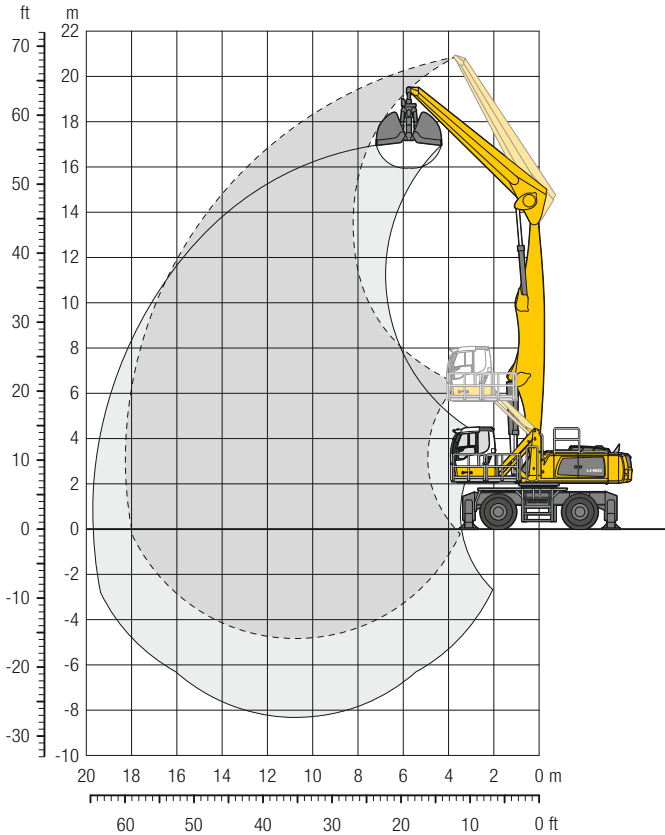
## Kinematic variant 2D / 2C



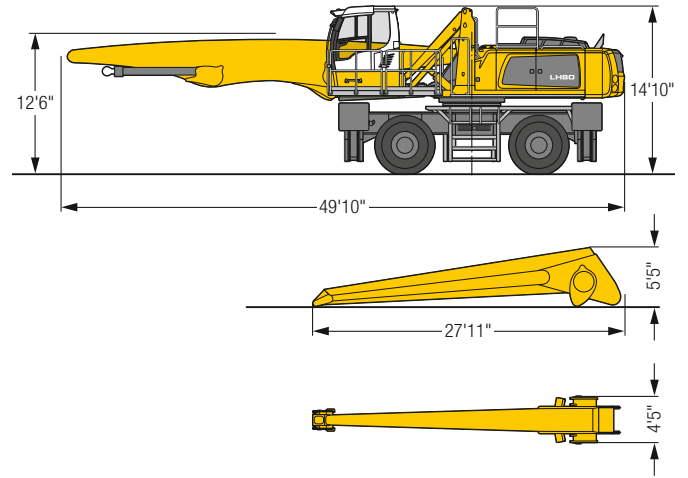
Altered range curve with additional reach depth, e.g. for unloading from ships

# LH 80 M – Equipment GG18

## Port – Kinematic 2A



### Dimensions



### Operating weight

The operating weight includes the basic machine with 4 point outriggers, hydr. cab elevation, 4 solid tires, straight boom 34'5", straight stick 26'3" and grab for loose material GMZ 80 /10.46 yd<sup>3</sup>.

Weight 178,400 lb

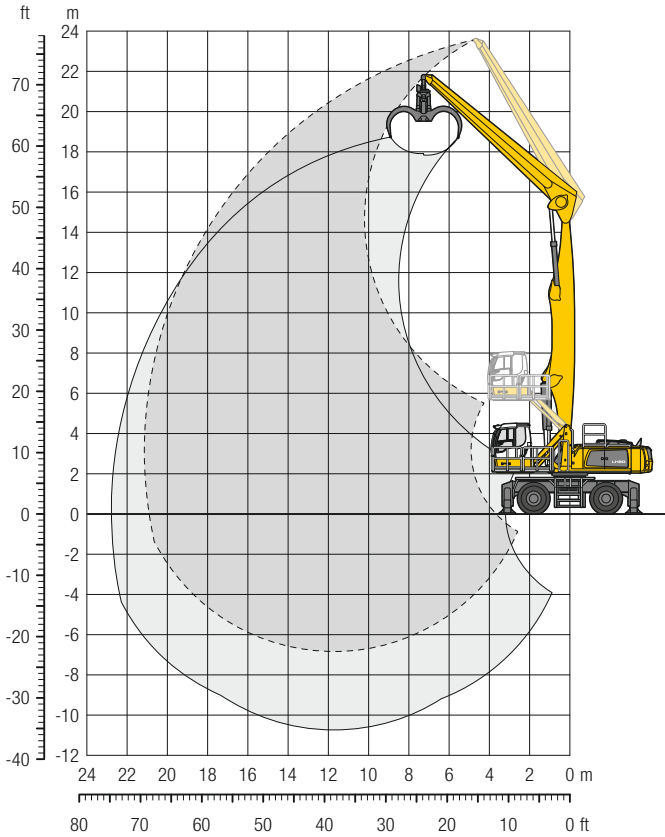
| ft  | Undercarriage         | Reach (ft)  |             |             |             |             |             |             |             |    |    |    |    |    | ft in |    |       |       |        |
|-----|-----------------------|-------------|-------------|-------------|-------------|-------------|-------------|-------------|-------------|----|----|----|----|----|-------|----|-------|-------|--------|
|     |                       | 20          | 25          | 30          | 35          | 40          | 45          | 50          | 55          | 60 | 65 | 70 | 75 | 80 | ft    | in |       |       |        |
| 75  | 4 pt. outriggers down |             |             |             |             |             |             |             |             |    |    |    |    |    |       |    |       |       |        |
| 70  | 4 pt. outriggers down |             |             |             |             |             |             |             |             |    |    |    |    |    |       |    |       |       |        |
| 65  | 4 pt. outriggers down | 44,4* 44,4* |             |             |             |             |             |             |             |    |    |    |    |    |       |    | 37,3* | 37,3* | 24' 1" |
| 60  | 4 pt. outriggers down |             | 42,7* 42,7* | 36,9* 36,9* |             |             |             |             |             |    |    |    |    |    |       |    | 30,4* | 30,4* | 33' 5" |
| 55  | 4 pt. outriggers down |             | 44,5* 44,5* | 40,1* 40,1* | 36,3* 36,3* |             |             |             |             |    |    |    |    |    |       |    | 27,0* | 27,0* | 39'11" |
| 50  | 4 pt. outriggers down |             |             | 39,2* 39,2* | 35,5* 35,5* | 32,8* 32,8* |             |             |             |    |    |    |    |    |       |    | 25,0* | 25,0* | 45'    |
| 45  | 4 pt. outriggers down |             |             |             | 38,8* 38,8* | 35,2* 35,2* | 32,4* 32,4* | 30,1* 30,1* |             |    |    |    |    |    |       |    | 23,7* | 23,7* | 48'11" |
| 40  | 4 pt. outriggers down |             |             |             | 39,0* 39,0* | 35,3* 35,3* | 32,3* 32,3* | 29,9* 29,9* | 27,9* 27,9* |    |    |    |    |    |       |    | 22,8* | 22,8* | 52' 2" |
| 35  | 4 pt. outriggers down |             | 45,0* 45,0* | 39,7* 39,7* | 35,7* 35,7* | 32,6* 32,6* | 30,0* 30,0* | 27,9* 27,9* |             |    |    |    |    |    |       |    | 22,3* | 22,3* | 54' 8" |
| 30  | 4 pt. outriggers down |             | 46,8* 46,8* | 41,0* 41,0* | 36,6* 36,6* | 33,1* 33,1* | 30,3* 30,3* | 27,9* 27,9* | 25,5 25,7*  |    |    |    |    |    |       |    | 22,0* | 22,0* | 56' 8" |
| 25  | 4 pt. outriggers down | 46,0* 46,0* | 49,4* 49,4* | 42,6* 42,6* | 37,7* 37,7* | 33,8* 33,8* | 30,7* 30,7* | 28,1* 28,1* | 25,3 25,7*  |    |    |    |    |    |       |    | 21,9* | 21,9* | 58' 2" |
| 20  | 4 pt. outriggers down | 62,9* 62,9* | 52,5* 52,5* | 44,6* 44,6* | 38,9* 38,9* | 34,6* 34,6* | 31,2* 31,2* | 28,3* 28,3* | 25,1 25,7*  |    |    |    |    |    |       |    | 22,0* | 22,0* | 59' 2" |
| 15  | 4 pt. outriggers down | 69,9* 69,9* | 55,7* 55,7* | 46,6* 46,6* | 40,2* 40,2* | 35,4* 35,4* | 31,6* 31,6* | 28,5* 28,5* | 24,8 25,5*  |    |    |    |    |    |       |    | 21,7  | 22,0* | 59'10" |
| 10  | 4 pt. outriggers down | 74,4* 74,4* | 58,4* 58,4* | 48,3* 48,3* | 41,2* 41,2* | 36,0* 36,0* | 31,9* 31,9* | 28,2 28,4*  | 24,5 25,1*  |    |    |    |    |    |       |    | 20,8* | 20,8* | 60'    |
| 5   | 4 pt. outriggers down | 35,7* 35,7* | 59,8* 59,8* | 49,2* 49,2* | 41,8* 41,8* | 36,2* 36,2* | 31,8* 31,8* | 27,7 28,0*  | 24,2 24,3*  |    |    |    |    |    |       |    | 19,4* | 19,4* | 59' 8" |
| 0   | 4 pt. outriggers down | 30,3* 30,3* | 59,2* 59,2* | 48,9* 48,9* | 41,4* 41,4* | 35,7* 35,7* | 31,1* 31,1* | 26,9* 26,9* | 22,7* 22,7* |    |    |    |    |    |       |    | 17,7* | 17,7* | 59'    |
| -5  | 4 pt. outriggers down | 31,6* 31,6* | 56,2* 56,2* | 47,0* 47,0* | 39,9* 39,9* | 34,3* 34,3* | 29,5* 29,5* | 25,0* 25,0* | 20,0* 20,0* |    |    |    |    |    |       |    | 18,3* | 18,3* | 56' 4" |
| -10 | 4 pt. outriggers down | 35,3* 35,3* | 50,4* 50,4* | 43,0* 43,0* | 36,8* 36,8* | 31,5* 31,5* | 26,7* 26,7* | 21,8* 21,8* |             |    |    |    |    |    |       |    | 20,2* | 20,2* | 51' 6" |
| -15 | 4 pt. outriggers down |             |             | 36,6* 36,6* | 31,7* 31,7* | 26,9* 26,9* |             |             |             |    |    |    |    |    |       |    | 26,0* | 26,0* | 40'11" |
| -20 | 4 pt. outriggers down |             |             |             |             |             |             |             |             |    |    |    |    |    |       |    |       |       |        |

Height Can be slewed through 360° In longitudinal position of undercarriage Max. reach \* Limited by hydr. capacity

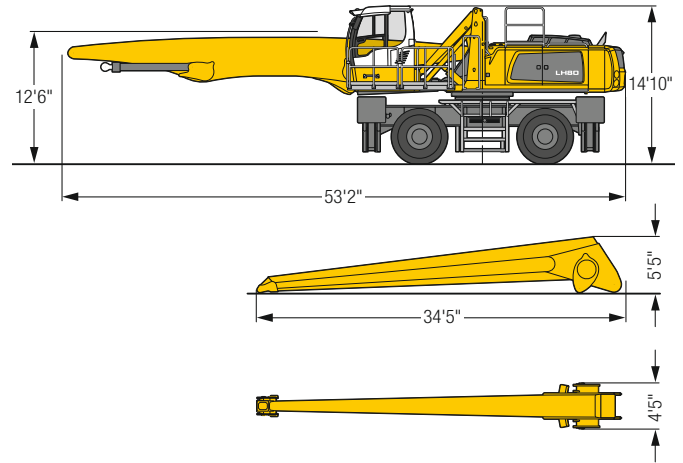
The lift capacities on the stick end without attachment are stated in lb x 1,000 and are valid on a firm, level supporting surface with blocked oscillating axle. These capacities can be slewed through 360° with the undercarriage in the transverse position. Capacities in the longitudinal position of the undercarriage (±15°) are specified over the rigid axle with the stabilizers down. Indicated loads based on the ISO 10567 standard and do not exceed 75% of tipping or 87% of hydraulic capacity. The lift capacity values indicated are attained at the corresponding operating temperature. This operating temperature is ensured by continuous movement of the boom. Weights of fitted attachments (grabs, load hooks, etc.) and load accommodation attachment are to be deducted from the lift capacity values. The lift capacity of the unit is limited by its stability, the lifting capability of the hydraulic elements, or the maximum permissible lifting capacity of the load hook.

# LH 80 M – Equipment GG21

## Port – Kinematic 2A



### Dimensions



### Operating weight

The operating weight includes the basic machine with 4 point outriggers, hydr. cab elevation, 4 solid tires, straight boom 37'9", straight stick 32'10" and wood grab GMH 80 / 2.63 yd<sup>2</sup>.

Weight 177,400 lb

| ft  | Undercarriage         | Lift Capacity (ft) |             |             |             |             |             |             |             |             |             |       |       |       |  | ft in       |         |
|-----|-----------------------|--------------------|-------------|-------------|-------------|-------------|-------------|-------------|-------------|-------------|-------------|-------|-------|-------|--|-------------|---------|
|     |                       | 20 ft              | 25 ft       | 30 ft       | 35 ft       | 40 ft       | 45 ft       | 50 ft       | 55 ft       | 60 ft       | 65 ft       | 70 ft | 75 ft | 80 ft |  |             |         |
| 75  | 4 pt. outriggers down | 37.5* 37.5*        |             |             |             |             |             |             |             |             |             |       |       |       |  | 31.9* 31.9* | 24' 6"  |
| 70  | 4 pt. outriggers down |                    |             | 31.7* 31.7* | 25.7* 25.7* |             |             |             |             |             |             |       |       |       |  | 25.4* 25.4* | 35' 2"  |
| 65  | 4 pt. outriggers down |                    |             | 34.3* 34.3* | 31.0* 31.0* | 26.3* 26.3* |             |             |             |             |             |       |       |       |  | 22.3* 22.3* | 42' 7"  |
| 60  | 4 pt. outriggers down |                    |             |             | 32.6* 32.6* | 29.8* 29.8* | 25.7* 25.7* |             |             |             |             |       |       |       |  | 20.4* 20.4* | 48' 5"  |
| 55  | 4 pt. outriggers down |                    |             |             | 32.0* 32.0* | 29.3* 29.3* | 27.1* 27.1* | 24.4* 24.4* |             |             |             |       |       |       |  | 19.1* 19.1* | 53' 1"  |
| 50  | 4 pt. outriggers down |                    |             |             | 31.7* 31.7* | 29.0* 29.0* | 26.8* 26.8* | 25.0* 25.0* | 22.1* 22.1* |             |             |       |       |       |  | 18.3* 18.3* | 57'     |
| 45  | 4 pt. outriggers down |                    |             |             | 31.7* 31.7* | 29.0* 29.0* | 26.7* 26.7* | 24.9* 24.9* | 23.3* 23.3* | 18.1* 18.1* |             |       |       |       |  | 17.7* 17.7* | 60' 2"  |
| 40  | 4 pt. outriggers down |                    |             |             | 32.0* 32.0* | 29.2* 29.2* | 26.9* 26.9* | 24.9* 24.9* | 23.3* 23.3* | 21.8* 21.8* |             |       |       |       |  | 17.3* 17.3* | 62' 10" |
| 35  | 4 pt. outriggers down |                    |             |             | 32.6* 32.6* | 29.6* 29.6* | 27.1* 27.1* | 25.1* 25.1* | 23.3* 23.3* | 21.8* 21.8* |             |       |       |       |  | 17.0* 17.0* | 64' 11" |
| 30  | 4 pt. outriggers down |                    |             |             | 33.4* 33.4* | 30.2* 30.2* | 27.6* 27.6* | 25.4* 25.4* | 23.5* 23.5* | 21.8* 21.8* | 19.3 20.1*  |       |       |       |  | 16.9* 16.9* | 67' 7"  |
| 25  | 4 pt. outriggers down |                    | 35.9* 35.9* | 39.1* 39.1* | 34.5* 34.5* | 31.0* 31.0* | 28.1* 28.1* | 25.7* 25.7* | 23.7* 23.7* | 21.9* 21.9* | 19.2 20.0*  |       |       |       |  | 16.8* 16.8* | 67' 11" |
| 20  | 4 pt. outriggers down | 34.8* 34.8*        | 43.5* 43.5* | 41.0* 41.0* | 35.8* 35.8* | 31.8* 31.8* | 28.7* 28.7* | 26.1* 26.1* | 23.9* 23.9* | 21.8 21.9*  | 19.0 20.0*  |       |       |       |  | 16.9* 16.9* | 68' 10" |
| 15  | 4 pt. outriggers down | 63.1* 63.1*        | 51.2* 51.2* | 43.0* 43.0* | 37.1* 37.1* | 32.7* 32.7* | 29.3* 29.3* | 26.4* 26.4* | 24.1* 24.1* | 21.5 21.9*  | 18.8 19.8*  |       |       |       |  | 16.8 17.1*  | 69' 4"  |
| 10  | 4 pt. outriggers down | 68.6* 68.6*        | 54.1* 54.1* | 44.8* 44.8* | 38.3* 38.3* | 33.5* 33.5* | 29.7* 29.7* | 26.7* 26.7* | 24.1* 24.1* | 21.1 21.8*  | 18.5 19.4*  |       |       |       |  | 16.5* 16.5* | 69' 5"  |
| 5   | 4 pt. outriggers down | 39.6* 39.6*        | 56.2* 56.2* | 46.2* 46.2* | 39.2* 39.2* | 34.0* 34.0* | 30.0* 30.0* | 26.8* 26.8* | 23.6 24.0*  | 20.7 21.5*  | 18.3 18.8*  |       |       |       |  | 15.6* 15.6* | 69' 2"  |
| 0   | 4 pt. outriggers down | 26.6* 26.6*        | 56.8* 56.8* | 46.7* 46.7* | 39.5* 39.5* | 34.2* 34.2* | 30.0* 30.0* | 26.6* 26.6* | 23.1 23.6*  | 20.4 20.8*  | 17.7* 17.7* |       |       |       |  | 14.5* 14.5* | 68' 7"  |
| -5  | 4 pt. outriggers down | 24.9* 24.9*        | 49.5* 49.5* | 46.1* 46.1* | 39.1* 39.1* | 33.7* 33.7* | 29.5* 29.5* | 25.9* 25.9* | 22.7 22.7*  | 19.6* 19.6* | 16.0* 16.0* |       |       |       |  | 13.4* 13.4* | 67' 5"  |
| -10 | 4 pt. outriggers down | 26.3* 26.3*        | 44.9* 44.9* | 44.1* 44.1* | 37.6* 37.6* | 32.5* 32.5* | 28.2* 28.2* | 24.6* 24.6* | 21.2* 21.2* | 17.7* 17.7* |             |       |       |       |  | 14.2* 14.2* | 64'     |
| -15 | 4 pt. outriggers down | 29.0* 29.0*        | 44.9* 44.9* | 40.4* 40.4* | 34.8* 34.8* | 30.1* 30.1* | 26.1* 26.1* | 22.4* 22.4* | 18.8* 18.8* |             |             |       |       |       |  | 15.6* 15.6* | 59'     |
| -20 | 4 pt. outriggers down |                    |             | 34.9* 34.9* | 30.4* 30.4* | 26.4* 26.4* | 22.6* 22.6* | 19.0* 19.0* |             |             |             |       |       |       |  | 18.8* 18.8* | 50' 4"  |

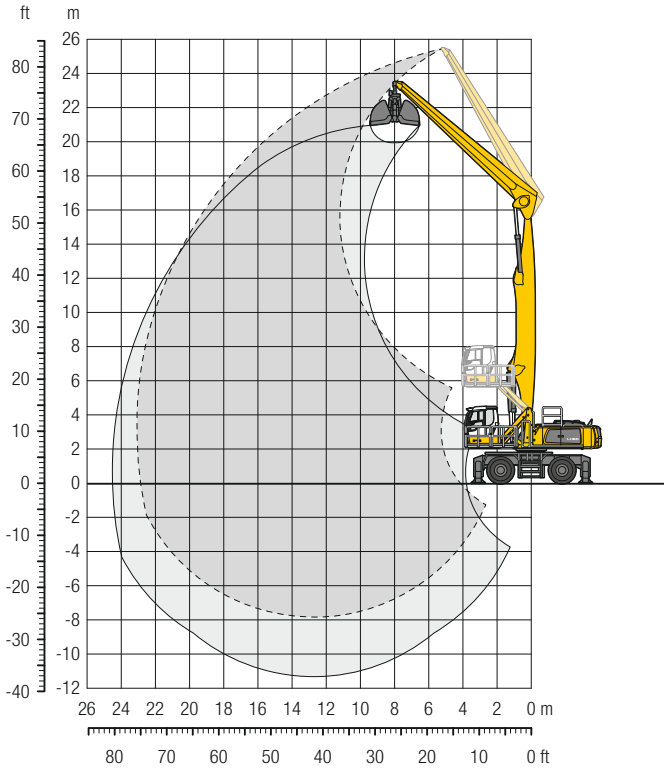
Height Can be slewed through 360° In longitudinal position of undercarriage Max. reach \* Limited by hydr. capacity

The lift capacities on the stick end without attachment are stated in lb x 1,000 and are valid on a firm, level supporting surface with blocked oscillating axle. These capacities can be slewed through 360° with the undercarriage in the transverse position. Capacities in the longitudinal position of the undercarriage (±15°) are specified over the rigid axle with the stabilizers down. Indicated loads based on the ISO 10567 standard and do not exceed 75% of tipping or 87% of hydraulic capacity. The lift capacity values indicated are attained at the corresponding operating temperature. This operating temperature is ensured by continuous movement of the boom. Weights of fitted attachments (grabs, load hooks, etc.) and load accommodation attachment are to be deducted from the lift capacity values. The lift capacity of the unit is limited by its stability, the lifting capability of the hydraulic elements, or the maximum permissible lifting capacity of the load hook.

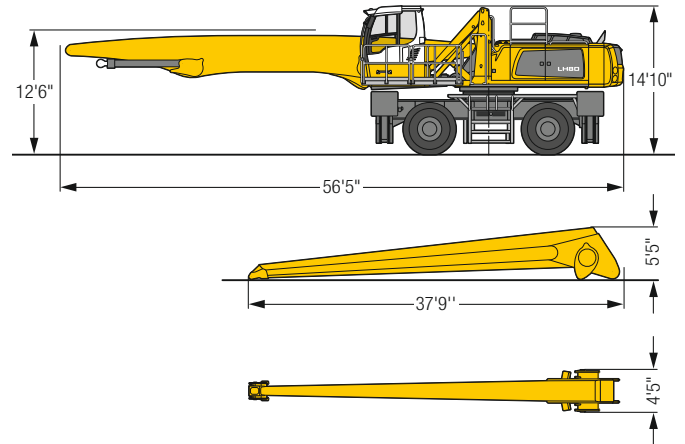


# LH 80 M – Equipment GG23

## Port – Kinematic 2A



### Dimensions



### Operating weight

The operating weight includes the basic machine with 4 point outriggers, hydr. cab elevation, 4 solid tires, straight boom 41', straight stick 36'1" and grab for loose material GMZ 80 / 7.85 yd<sup>3</sup>.

|        |            |
|--------|------------|
| Weight | 181,100 lb |
|--------|------------|

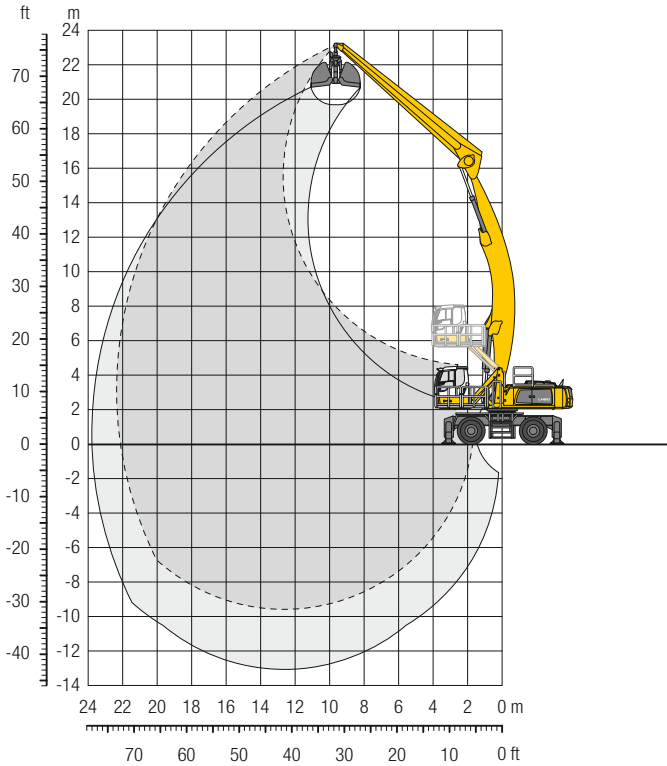
| ft  | Undercarriage         | 20 ft       | 25 ft       | 30 ft       | 35 ft       | 40 ft       | 45 ft       | 50 ft       | 55 ft       | 60 ft       | 65 ft       | 70 ft       | 75 ft       | 80 ft | ft in               |
|-----|-----------------------|-------------|-------------|-------------|-------------|-------------|-------------|-------------|-------------|-------------|-------------|-------------|-------------|-------|---------------------|
| 80  | 4 pt. outriggers down |             | 31.5* 31.5* | 26.0* 26.0* |             |             |             |             |             |             |             |             |             |       | 25.9* 25.9* 30' 1"  |
| 75  | 4 pt. outriggers down |             |             | 30.6* 30.6* | 26.9* 26.9* |             |             |             |             |             |             |             |             |       | 21.3* 21.3* 39' 11" |
| 70  | 4 pt. outriggers down |             |             |             | 29.6* 29.6* | 26.6* 26.6* | 22.0* 22.0* |             |             |             |             |             |             |       | 18.9* 18.9* 47' 1"  |
| 65  | 4 pt. outriggers down |             |             |             | 30.8* 30.8* | 28.3* 28.3* | 26.0* 26.0* | 21.6* 21.6* |             |             |             |             |             |       | 17.3* 17.3* 52' 11" |
| 60  | 4 pt. outriggers down |             |             |             |             | 27.8* 27.8* | 25.5* 25.5* | 23.6* 23.6* | 20.5* 20.5* |             |             |             |             |       | 16.3* 16.3* 57' 7"  |
| 55  | 4 pt. outriggers down |             |             |             |             | 27.6* 27.6* | 25.3* 25.3* | 23.4* 23.4* | 21.8* 21.8* | 18.5* 18.5* |             |             |             |       | 15.5* 15.5* 61' 7"  |
| 50  | 4 pt. outriggers down |             |             |             |             | 27.5* 27.5* | 25.2* 25.2* | 23.3* 23.3* | 21.7* 21.7* | 20.3* 20.3* |             |             |             |       | 14.9* 14.9* 65"     |
| 45  | 4 pt. outriggers down |             |             |             |             | 27.6* 27.6* | 25.3* 25.3* | 23.3* 23.3* | 21.6* 21.6* | 20.2* 20.2* | 18.9* 18.9* |             |             |       | 14.5* 14.5* 67' 10" |
| 40  | 4 pt. outriggers down |             |             |             | 30.9* 30.9* | 27.9* 27.9* | 25.4* 25.4* | 23.4* 23.4* | 21.7* 21.7* | 20.2* 20.2* | 18.8* 18.8* | 14.6* 14.6* |             |       | 14.3* 14.3* 70' 1"  |
| 35  | 4 pt. outriggers down |             |             |             | 31.5* 31.5* | 28.3* 28.3* | 25.8* 25.8* | 23.6* 23.6* | 21.8* 21.8* | 20.3* 20.3* | 18.8* 18.8* | 16.9 17.4*  |             |       | 14.1* 14.1* 72"     |
| 30  | 4 pt. outriggers down |             |             | 32.4* 32.4* | 32.3* 32.3* | 28.9* 28.9* | 26.2* 26.2* | 23.9* 23.9* | 22.0* 22.0* | 20.4* 20.4* | 18.9* 18.9* | 16.8 17.4*  |             |       | 14.0* 14.0* 73' 7"  |
| 25  | 4 pt. outriggers down |             |             | 35.7* 35.7* | 33.3* 33.3* | 29.6* 29.6* | 26.7* 26.7* | 24.3* 24.3* | 22.2* 22.2* | 20.5* 20.5* | 18.9* 18.9* | 16.7 17.4*  |             |       | 14.0* 14.0* 74' 8"  |
| 20  | 4 pt. outriggers down | 29.1* 29.1* | 37.6* 37.6* | 39.6* 39.6* | 34.4* 34.4* | 30.4* 30.4* | 27.2* 27.2* | 24.6* 24.6* | 22.5* 22.5* | 20.6* 20.6* | 18.8 18.9*  | 16.4 17.3*  | 14.4 15.2*  |       | 14.0* 14.0* 75' 6"  |
| 15  | 4 pt. outriggers down | 55.7* 55.7* | 49.5* 49.5* | 41.3* 41.3* | 35.5* 35.5* | 31.1* 31.1* | 27.7* 27.7* | 25.0* 25.0* | 22.7* 22.7* | 20.7* 20.7* | 18.4 18.9*  | 16.2 17.1*  | 14.3 14.9*  |       | 13.9 14.2* 76"      |
| 10  | 4 pt. outriggers down | 66.0* 66.0* | 51.9* 51.9* | 42.8* 42.8* | 36.5* 36.5* | 31.8* 31.8* | 28.1* 28.1* | 25.2* 25.2* | 22.8* 22.8* | 20.6 20.7*  | 18.0 18.7*  | 15.9 16.8*  | 14.1 14.3*  |       | 13.5* 13.5* 76' 1"  |
| 5   | 4 pt. outriggers down | 28.3* 28.3* | 53.6* 53.6* | 43.9* 43.9* | 37.2* 37.2* | 32.3* 32.3* | 28.4* 28.4* | 25.3* 25.3* | 22.8* 22.8* | 20.1 20.5*  | 17.7 18.4*  | 15.7 16.3*  | 13.5* 13.5* |       | 12.7* 12.7* 75' 11" |
| 0   | 4 pt. outriggers down | 19.7* 19.7* | 47.6* 47.6* | 44.4* 44.4* | 37.5* 37.5* | 32.4* 32.4* | 28.4* 28.4* | 25.2* 25.2* | 22.3 22.5*  | 19.6 20.2*  | 17.3 17.9*  | 15.5 15.5*  | 12.1* 12.1* |       | 11.7* 11.7* 75' 4"  |
| -5  | 4 pt. outriggers down | 18.8* 18.8* | 36.1* 36.1* | 43.8* 43.8* | 37.2* 37.2* | 32.1* 32.1* | 28.1* 28.1* | 24.8* 24.8* | 21.8 22.0*  | 19.2 19.5*  | 17.0 17.1*  | 14.3* 14.3* |             |       | 10.7* 10.7* 74' 4"  |
| -10 | 4 pt. outriggers down | 20.1* 20.1* | 33.4* 33.4* | 42.2* 42.2* | 36.0* 36.0* | 31.1* 31.1* | 27.2* 27.2* | 23.9* 23.9* | 21.1* 21.1* | 18.4* 18.4* | 15.7* 15.7* | 12.5* 12.5* |             |       | 11.2* 11.2* 71' 5"  |
| -15 | 4 pt. outriggers down | 22.4* 22.4* | 33.7* 33.7* | 39.2* 39.2* | 33.8* 33.8* | 29.3* 29.3* | 25.6* 25.6* | 22.4* 22.4* | 19.5* 19.5* | 16.7* 16.7* | 13.7* 13.7* |             |             |       | 12.1* 12.1* 67' 2"  |
| -20 | 4 pt. outriggers down |             | 35.4* 35.4* | 34.7* 34.7* | 30.4* 30.4* | 26.5* 26.5* | 23.2* 23.2* | 20.1* 20.1* | 17.2* 17.2* | 14.2* 14.2* |             |             |             |       | 13.6* 13.6* 60' 11" |
| -25 | 4 pt. outriggers down |             |             |             |             | 22.5* 22.5* | 19.6* 19.6* |             |             |             |             |             |             |       | 18.2* 18.2* 47' 6"  |

Height Can be slewed through 360° In longitudinal position of undercarriage Max. reach \* Limited by hydr. capacity

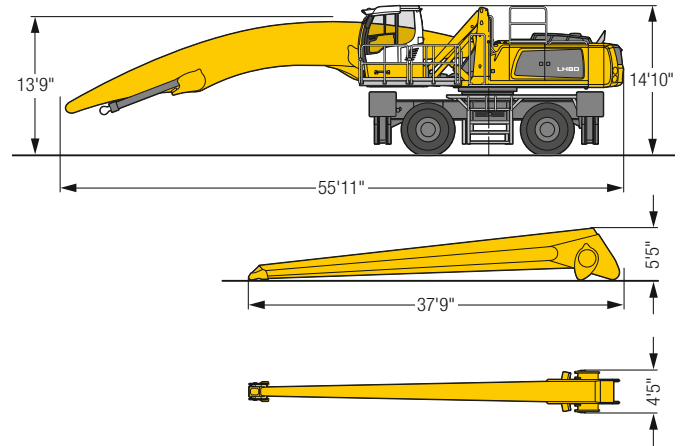
The lift capacities on the stick end without attachment are stated in lb x 1,000 and are valid on a firm, level supporting surface with blocked oscillating axle. These capacities can be slewed through 360° with the undercarriage in the transverse position. Capacities in the longitudinal position of the undercarriage (±15°) are specified over the rigid axle with the stabilizers down. Indicated loads based on the ISO 10567 standard and do not exceed 75% of tipping or 87% of hydraulic capacity. The lift capacity values indicated are attained at the corresponding operating temperature. This operating temperature is ensured by continuous movement of the boom. Weights of fitted attachments (grabs, load hooks, etc.) and load accommodation attachment are to be deducted from the lift capacity values. The lift capacity of the unit is limited by its stability, the lifting capability of the hydraulic elements, or the maximum permissible lifting capacity of the load hook.

# LH 80 M – Equipment AG22

## Port – Kinematic 2D



### Dimensions



### Operating weight

The operating weight includes the basic machine with 4 point outriggers, hydr. cab elevation, 4 solid tires, angled boom 41', straight stick 361" and grab for loose material GMZ 80 / 7.85 yd<sup>3</sup>.

|        |            |
|--------|------------|
| Weight | 182,600 lb |
|--------|------------|

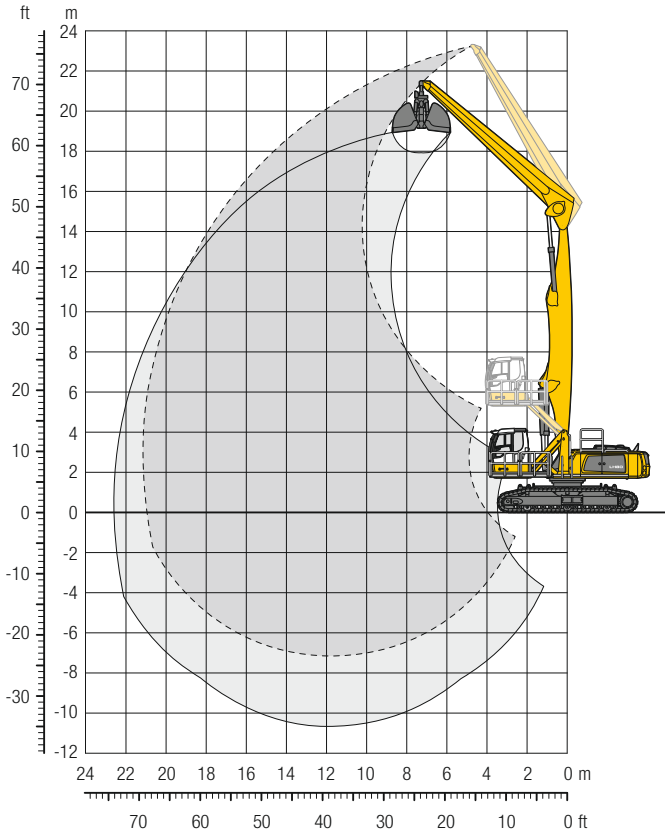
| ft  | Undercarriage         | 20 ft       | 25 ft       | 30 ft       | 35 ft       | 40 ft       | 45 ft       | 50 ft       | 55 ft       | 60 ft       | 65 ft       | 70 ft       | 75 ft | 80 ft | ft in       |
|-----|-----------------------|-------------|-------------|-------------|-------------|-------------|-------------|-------------|-------------|-------------|-------------|-------------|-------|-------|-------------|
| 75  | 4 pt. outriggers down |             |             |             |             |             |             |             |             |             |             |             |       |       | 21.1* 21.1* |
| 70  | 4 pt. outriggers down |             |             |             |             | 21.1* 21.1* |             |             |             |             |             |             |       |       | 18.7* 18.7* |
| 65  | 4 pt. outriggers down |             |             |             |             | 23.5* 23.5* | 21.1* 21.1* |             |             |             |             |             |       |       | 17.3* 17.3* |
| 60  | 4 pt. outriggers down |             |             |             |             |             | 21.4* 21.4* | 20.2* 20.2* |             |             |             |             |       |       | 16.4* 16.4* |
| 55  | 4 pt. outriggers down |             |             |             |             |             | 21.1* 21.1* | 19.9* 19.9* | 18.9* 18.9* |             |             |             |       |       | 15.8* 15.8* |
| 50  | 4 pt. outriggers down |             |             |             |             |             | 21.0* 21.0* | 19.7* 19.7* | 18.7* 18.7* | 17.7* 17.7* |             |             |       |       | 15.4* 15.4* |
| 45  | 4 pt. outriggers down |             |             |             |             |             | 21.1* 21.1* | 19.8* 19.8* | 18.6* 18.6* | 17.7* 17.7* |             |             |       |       | 15.2* 15.2* |
| 40  | 4 pt. outriggers down |             |             |             |             | 23.1* 23.1* | 21.4* 21.4* | 19.9* 19.9* | 18.7* 18.7* | 17.7* 17.7* | 16.9* 16.9* |             |       |       | 15.0* 15.0* |
| 35  | 4 pt. outriggers down |             |             |             |             | 23.6* 23.6* | 21.7* 21.7* | 20.2* 20.2* | 18.9* 18.9* | 17.9* 17.9* | 17.0* 17.0* |             |       |       | 15.0* 15.0* |
| 30  | 4 pt. outriggers down |             |             |             | 26.8* 26.8* | 24.3* 24.3* | 22.3* 22.3* | 20.6* 20.6* | 19.2* 19.2* | 18.1* 18.1* | 17.1* 17.1* | 16.2* 16.2* |       |       | 15.0* 15.0* |
| 25  | 4 pt. outriggers down |             |             |             | 27.9* 27.9* | 25.1* 25.1* | 22.9* 22.9* | 21.1* 21.1* | 19.6* 19.6* | 18.3* 18.3* | 17.2* 17.2* | 16.3* 16.3* |       |       | 15.2* 15.2* |
| 20  | 4 pt. outriggers down |             | 39.2* 39.2* | 33.5* 33.5* | 29.3* 29.3* | 26.1* 26.1* | 23.6* 23.6* | 21.6* 21.6* | 20.0* 20.0* | 18.6* 18.6* | 17.4* 17.4* | 16.4* 16.4* |       |       | 15.4* 15.4* |
| 15  | 4 pt. outriggers down | 52.7* 52.7* | 42.4* 42.4* | 35.6* 35.6* | 30.8* 30.8* | 27.2* 27.2* | 24.4* 24.4* | 22.2* 22.2* | 20.4* 20.4* | 18.9* 18.9* | 17.6* 17.6* | 16.4 16.5*  |       |       | 15.1 15.8*  |
| 10  | 4 pt. outriggers down | 57.9* 57.9* | 45.6* 45.6* | 37.7* 37.7* | 32.2* 32.2* | 28.3* 28.3* | 25.2* 25.2* | 22.8* 22.8* | 20.9* 20.9* | 19.2* 19.2* | 17.8* 17.8* | 16.1 16.6*  |       |       | 14.8 15.7*  |
| 5   | 4 pt. outriggers down | 45.8* 45.8* | 48.4* 48.4* | 39.6* 39.6* | 33.6* 33.6* | 29.3* 29.3* | 26.0* 26.0* | 23.4* 23.4* | 21.3* 21.3* | 19.5* 19.5* | 17.9 18.0*  | 15.8 16.6*  |       |       | 14.7 15.6*  |
| 0   | 4 pt. outriggers down | 30.0* 30.0* | 50.5* 50.5* | 41.2* 41.2* | 34.8* 34.8* | 30.1* 30.1* | 26.6* 26.6* | 23.8* 23.8* | 21.6* 21.6* | 19.7* 19.7* | 17.5 18.0*  | 15.5 16.4*  |       |       | 14.7 15.5*  |
| -5  | 4 pt. outriggers down | 26.3* 26.3* | 45.6* 45.6* | 42.2* 42.2* | 35.6* 35.6* | 30.8* 30.8* | 27.1* 27.1* | 24.2* 24.2* | 21.8* 21.8* | 19.4 19.7*  | 17.2 17.9*  | 15.3 16.1*  |       |       | 14.8 15.4*  |
| -10 | 4 pt. outriggers down | 26.0* 26.0* | 40.1* 40.1* | 42.5* 42.5* | 35.9* 35.9* | 31.0* 31.0* | 27.2* 27.2* | 24.2* 24.2* | 21.5 21.7*  | 19.0 19.6*  | 16.9 17.5*  | 15.2 15.4*  |       |       | 15.1 15.2*  |
| -15 | 4 pt. outriggers down | 26.9* 26.9* | 38.6* 38.6* | 42.0* 42.0* | 35.7* 35.7* | 30.8* 30.8* | 27.0* 27.0* | 24.0* 24.0* | 21.1 21.4*  | 18.7 19.0*  | 16.7 16.8*  |             |       |       | 14.9* 14.9* |
| -20 | 4 pt. outriggers down | 28.5* 28.5* | 38.8* 38.8* | 40.5* 40.5* | 34.6* 34.6* | 30.0* 30.0* | 26.3* 26.3* | 23.2* 23.2* | 20.5* 20.5* | 18.0* 18.0* | 15.3* 15.3* |             |       |       | 14.3* 14.3* |
| -25 | 4 pt. outriggers down |             | 40.0* 40.0* | 37.8* 37.8* | 32.6* 32.6* | 28.4* 28.4* | 24.8* 24.8* | 21.8* 21.8* | 19.0* 19.0* | 16.2* 16.2* |             |             |       |       | 15.2* 15.2* |
| -30 | 4 pt. outriggers down |             |             |             | 29.4* 29.4* | 25.7* 25.7* | 22.4* 22.4* | 19.4* 19.4* |             |             |             |             |       |       | 19.1* 19.1* |

Height Can be slewed through 360° In longitudinal position of undercarriage Max. reach \* Limited by hydr. capacity

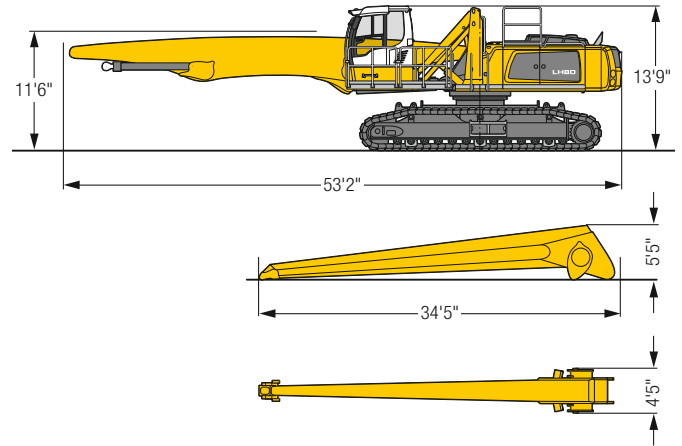
The lift capacities on the stick end without attachment are stated in lb x 1,000 and are valid on a firm, level supporting surface with blocked oscillating axle. These capacities can be slewed through 360° with the undercarriage in the transverse position. Capacities in the longitudinal position of the undercarriage (±15°) are specified over the rigid axle with the stabilizers down. Indicated loads based on the ISO 10567 standard and do not exceed 75% of tipping or 87% of hydraulic capacity. The lift capacity values indicated are attained at the corresponding operating temperature. This operating temperature is ensured by continuous movement of the boom. Weights of fitted attachments (grabs, load hooks, etc.) and load accommodation attachment are to be deducted from the lift capacity values. The lift capacity of the unit is limited by its stability, the lifting capability of the hydraulic elements, or the maximum permissible lifting capacity of the load hook.

# LH 80 C SW – Equipment GG21

## Port – Kinematic 2A



### Dimensions



### Operating weight and ground pressure

The operating weight includes the basic machine with hydr. cab elevation, straight boom 37'9", straight stick 32'10" and grab for loose material GMZ 80 / 7.85 yd<sup>3</sup>.

|                 |            |
|-----------------|------------|
| Weight          | 188,700 lb |
| Pad width       | 30"        |
| Ground pressure | on request |

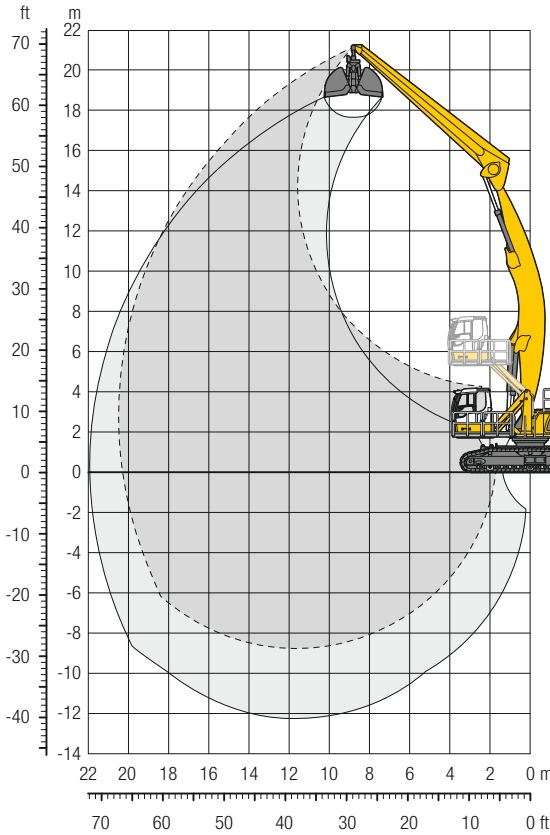
| ft  | Undercarriage | 20 ft |       | 25 ft |       | 30 ft |       | 35 ft |       | 40 ft |       | 45 ft |       | 50 ft |       | 55 ft |       | 60 ft |       | 65 ft |       | 70 ft |    | 75 ft |    | 80 ft |    | ft in |       |       |        |        |        |       |        |        |        |        |        |        |
|-----|---------------|-------|-------|-------|-------|-------|-------|-------|-------|-------|-------|-------|-------|-------|-------|-------|-------|-------|-------|-------|-------|-------|----|-------|----|-------|----|-------|-------|-------|--------|--------|--------|-------|--------|--------|--------|--------|--------|--------|
|     |               | SW    | SW    | SW    | SW    | SW    | SW    | SW    | SW    | SW    | SW    | SW    | SW    | SW    | SW    | SW    | SW    | SW    | SW    | SW    | SW    | SW    | SW | SW    | SW | SW    | SW | SW    | SW    |       |        |        |        |       |        |        |        |        |        |        |
| 75  | SW            | 36,0* | 36,0* |       |       |       |       |       |       |       |       |       |       |       |       |       |       |       |       |       |       |       |    |       |    |       |    |       | 35,5* | 35,5* | 20' 5" |        |        |       |        |        |        |        |        |        |
| 70  | SW            |       |       | 35,1* | 35,1* | 30,3* | 30,3* |       |       |       |       |       |       |       |       |       |       |       |       |       |       |       |    |       |    |       |    |       |       | 26,6* | 26,6*  | 32' 8" |        |       |        |        |        |        |        |        |
| 65  | SW            |       |       |       |       | 33,8* | 33,8* | 30,1* | 30,1* | 24,3* | 24,3* |       |       |       |       |       |       |       |       |       |       |       |    |       |    |       |    |       |       |       | 22,9*  | 22,9*  | 40'10" |       |        |        |        |        |        |        |
| 60  | SW            |       |       |       |       |       |       | 32,7* | 32,7* | 29,4* | 29,4* | 24,1* | 24,1* |       |       |       |       |       |       |       |       |       |    |       |    |       |    |       |       |       |        | 20,8*  | 20,8*  | 47'   |        |        |        |        |        |        |
| 55  | SW            |       |       |       |       |       |       | 32,1* | 32,1* | 29,4* | 29,4* | 27,2* | 27,2* | 22,9* | 22,9* |       |       |       |       |       |       |       |    |       |    |       |    |       |       |       |        |        | 19,4*  | 19,4* | 51'11" |        |        |        |        |        |
| 50  | SW            |       |       |       |       |       |       | 31,7* | 31,7* | 29,0* | 29,0* | 26,9* | 26,9* | 25,1* | 25,1* | 20,6* | 20,6* |       |       |       |       |       |    |       |    |       |    |       |       |       |        |        |        | 18,5* | 18,5*  | 56'    |        |        |        |        |
| 45  | SW            |       |       |       |       |       |       | 31,7* | 31,7* | 28,9* | 28,9* | 26,7* | 26,7* | 24,9* | 24,9* | 23,4* | 23,4* |       |       |       |       |       |    |       |    |       |    |       |       |       |        |        |        | 17,8* | 17,8*  | 59' 4" |        |        |        |        |
| 40  | SW            |       |       |       |       |       |       | 31,9* | 31,9* | 29,1* | 29,1* | 26,8* | 26,8* | 24,9* | 24,9* | 23,3* | 23,3* | 20,9  | 21,8* |       |       |       |    |       |    |       |    |       |       |       |        |        |        |       | 17,3*  | 17,3*  | 62' 1" |        |        |        |
| 35  | SW            |       |       |       |       |       |       | 32,4* | 32,4* | 29,4* | 29,4* | 27,0* | 27,0* | 25,0* | 25,0* | 23,3* | 23,3* | 21,0  | 21,8* |       |       |       |    |       |    |       |    |       |       |       |        |        |        |       | 17,0*  | 17,0*  | 64' 5" |        |        |        |
| 30  | SW            |       |       |       |       | 36,7* | 36,7* | 33,2* | 33,2* | 30,0* | 30,0* | 27,4* | 27,4* | 25,3* | 25,3* | 23,4* | 23,4* | 20,8  | 21,8* | 17,9  | 20,0* |       |    |       |    |       |    |       |       |       |        |        |        |       | 16,9*  | 16,9*  | 66' 2" |        |        |        |
| 25  | SW            |       |       |       |       | 38,7* | 38,7* | 34,2* | 34,2* | 30,7* | 30,7* | 27,9* | 27,9* | 25,6* | 25,6* | 23,6* | 23,6* | 20,6  | 21,8* | 17,8  | 20,1* |       |    |       |    |       |    |       |       |       |        |        |        |       |        | 16,5   | 16,8*  | 67' 7" |        |        |
| 20  | SW            | 32,2* | 32,2* | 40,6* | 40,6* | 40,5* | 40,5* | 35,4* | 35,4* | 31,6* | 31,6* | 28,5* | 28,5* | 26,0* | 26,0* | 23,5  | 23,8* | 20,3  | 21,9* | 17,6  | 20,0* |       |    |       |    |       |    |       |       |       |        |        |        |       |        | 15,9   | 16,9*  | 68' 7" |        |        |
| 15  | SW            | 49,8* | 49,8* | 50,4* | 50,4* | 42,4* | 42,4* | 36,8* | 36,8* | 32,5* | 32,5* | 29,1* | 29,1* | 26,4* | 26,4* | 22,9  | 24,0* | 19,9  | 21,9* | 17,4  | 19,8* |       |    |       |    |       |    |       |       |       |        |        |        |       |        | 15,6   | 17,1*  | 69' 2" |        |        |
| 10  | SW            | 67,4* | 67,4* | 53,4* | 53,4* | 44,3* | 44,3* | 38,0* | 38,0* | 33,3* | 33,3* | 29,6* | 29,6* | 26,0  | 26,6* | 22,4  | 24,1* | 19,5  | 21,8* | 17,1  | 19,5* |       |    |       |    |       |    |       |       |       |        |        |        |       |        | 15,4   | 16,8*  | 69' 5" |        |        |
| 5   | SW            | 50,9* | 50,9* | 55,7* | 55,7* | 45,8* | 45,8* | 39,0* | 39,0* | 33,9* | 33,9* | 29,5  | 30,0* | 25,2  | 26,8* | 21,8  | 24,1* | 19,1  | 21,6* | 16,9  | 19,0* |       |    |       |    |       |    |       |       |       |        |        |        |       |        |        | 15,3   | 15,9*  | 69' 4" |        |
| 0   | SW            | 28,2* | 28,2* | 56,8* | 56,8* | 46,6* | 46,6* | 39,5* | 39,5* | 33,8  | 34,2* | 28,6  | 30,1* | 24,5  | 26,7* | 21,4  | 23,7* | 18,8  | 21,0* | 16,7  | 18,1* |       |    |       |    |       |    |       |       |       |        |        |        |       |        |        | 14,8*  | 14,8*  | 68'10" |        |
| -5  | SW            | 24,9* | 24,9* | 52,4* | 52,4* | 46,4* | 46,4* | 39,3* | 39,3* | 32,7  | 33,9* | 27,8  | 29,7* | 24,0  | 26,1* | 20,9  | 23,0* | 18,5  | 20,0* | 16,5  | 16,5* |       |    |       |    |       |    |       |       |       |        |        |        |       |        |        |        | 13,5*  | 13,5*  | 67'11" |
| -10 | SW            | 25,8* | 25,8* | 45,5* | 45,5* | 44,8* | 44,8* | 38,1* | 38,1* | 31,9  | 32,9* | 27,2  | 28,7* | 23,5  | 25,0* | 20,6  | 21,7* | 18,3  | 18,4* | 14,1* | 14,1* |       |    |       |    |       |    |       |       |       |        |        |        |       |        |        |        | 14,0*  | 14,0*  | 65' 1" |
| -15 | SW            | 28,2* | 28,2* | 44,6* | 44,6* | 41,6* | 41,6* | 35,7* | 35,7* | 30,9* | 30,9* | 26,8  | 26,8* | 23,1* | 23,1* | 19,6* | 19,6* | 15,7* | 15,7* |       |       |       |    |       |    |       |    |       |       |       |        |        |        |       |        |        |        | 15,2*  | 15,2*  | 60' 7" |
| -20 | SW            |       |       | 41,9* | 41,9* | 36,6* | 36,6* | 31,8* | 31,8* | 27,6* | 27,6* | 23,7* | 23,7* | 20,1* | 20,1* |       |       |       |       |       |       |       |    |       |    |       |    |       |       |       |        |        |        |       |        |        |        | 17,5*  | 17,5*  | 53' 5" |

Height Can be slewed through 360° In longitudinal position of undercarriage Max. reach \* Limited by hydr. capacity

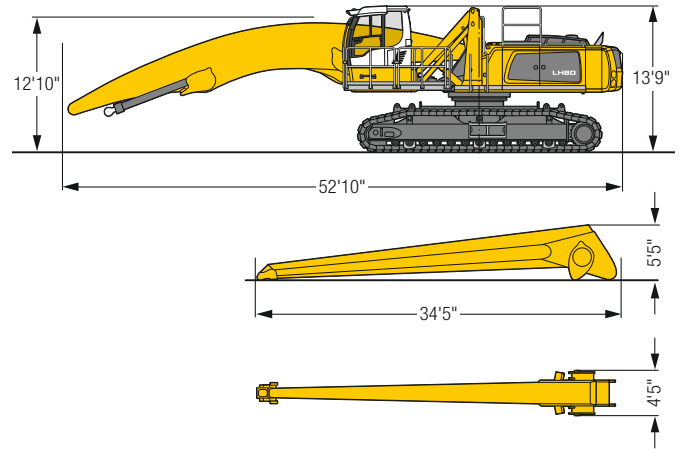
The lift capacities on the stick end without attachment are stated in lb x 1,000 and can be slewed through 360° on a firm, level supporting surface. Capacities are valid for 30" wide flat pads. Indicated loads based on the ISO 10567 standard and do not exceed 75% of tipping or 87% of hydraulic capacity. The lift capacity values indicated are attained at the corresponding operating temperature. This operating temperature is ensured by continuous movement of the boom. Weights of fitted attachments (grabs, load hooks, etc.) and load accommodation attachment are to be deducted from the lift capacity values. The lift capacity of the unit is limited by its stability, the lifting capability of the hydraulic elements, or the maximum permissible lifting capacity of the load hook.

# LH 80 C SW – Equipment AG21

## Port – Kinematic 2D



### Dimensions



### Operating weight and ground pressure

The operating weight includes the basic machine with hydr. cab elevation, angled boom 37°, straight stick 32'10" and grab for loose material GMZ 80 / 7.85 yd<sup>3</sup>.

|                 |            |
|-----------------|------------|
| Weight          | 190,200 lb |
| Pad width       | 30"        |
| Ground pressure | on request |

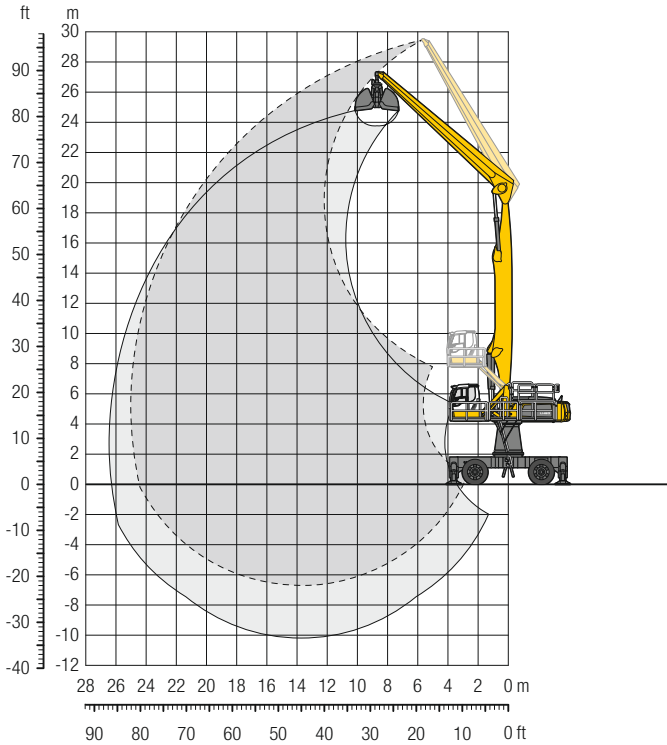
| ft  | Undercarriage | 20 ft       | 25 ft       | 30 ft       | 35 ft       | 40 ft       | 45 ft       | 50 ft       | 55 ft       | 60 ft       | 65 ft       | 70 ft | 75 ft | 80 ft | ft in              |
|-----|---------------|-------------|-------------|-------------|-------------|-------------|-------------|-------------|-------------|-------------|-------------|-------|-------|-------|--------------------|
| 70  | SW            |             |             |             |             |             |             |             |             |             |             |       |       |       |                    |
| 65  | SW            |             |             |             | 23,8* 23,8* |             |             |             |             |             |             |       |       |       | 21,6* 21,6* 36'11" |
| 60  | SW            |             |             |             |             | 24,0* 24,0* |             |             |             |             |             |       |       |       | 19,7* 19,7* 43' 8" |
| 55  | SW            |             |             |             |             | 24,7* 24,7* | 23,3* 23,3* |             |             |             |             |       |       |       | 18,6* 18,6* 49"    |
| 50  | SW            |             |             |             |             | 24,3* 24,3* | 22,9* 22,9* | 21,8* 21,8* |             |             |             |       |       |       | 17,8* 17,8* 53' 4" |
| 45  | SW            |             |             |             |             | 24,2* 24,2* | 22,7* 22,7* | 21,6* 21,6* | 20,1* 20,1* |             |             |       |       |       | 17,3* 17,3* 56'10" |
| 40  | SW            |             |             |             |             | 24,3* 24,3* | 22,8* 22,8* | 21,6* 21,6* | 20,6* 20,6* |             |             |       |       |       | 17,0* 17,0* 59' 8" |
| 35  | SW            |             |             |             |             | 24,7* 24,7* | 23,1* 23,1* | 21,7* 21,7* | 20,6* 20,6* | 19,7* 19,7* |             |       |       |       | 16,9* 16,9* 62"    |
| 30  | SW            |             |             |             | 27,7* 27,7* | 25,4* 25,4* | 23,6* 23,6* | 22,1* 22,1* | 20,8* 20,8* | 19,8* 19,8* |             |       |       |       | 16,9* 16,9* 63'11" |
| 25  | SW            |             |             | 32,1* 32,1* | 28,9* 28,9* | 26,3* 26,3* | 24,2* 24,2* | 22,5* 22,5* | 21,1* 21,1* | 20,0* 20,0* | 17,7* 17,7* |       |       |       | 17,0* 17,0* 65' 4" |
| 20  | SW            |             | 39,4* 39,4* | 34,2* 34,2* | 30,3* 30,3* | 27,4* 27,4* | 25,0* 25,0* | 23,1* 23,1* | 21,6* 21,6* | 20,2* 20,2* | 17,9 19,1*  |       |       |       | 17,2 17,2* 66' 5"  |
| 15  | SW            | 52,8* 52,8* | 43,0* 43,0* | 36,6* 36,6* | 32,0* 32,0* | 28,5* 28,5* | 25,9* 25,9* | 23,7* 23,7* | 22,0* 22,0* | 20,2 20,5*  | 17,6 19,2*  |       |       |       | 16,6 17,5* 67"     |
| 10  | SW            | 59,0* 59,0* | 46,8* 46,8* | 39,1* 39,1* | 33,7* 33,7* | 29,8* 29,8* | 26,8* 26,8* | 24,4* 24,4* | 22,5* 22,5* | 19,8 20,8*  | 17,3 19,3*  |       |       |       | 16,3 18,0* 67' 2"  |
| 5   | SW            | 64,4* 64,4* | 50,3* 50,3* | 41,4* 41,4* | 35,4* 35,4* | 31,0* 31,0* | 27,6* 27,6* | 25,0* 25,0* | 22,2 22,9*  | 19,3 21,0*  | 17,0 19,4*  |       |       |       | 16,1 18,6* 67' 1"  |
| 0   | SW            | 41,1* 41,1* | 53,0* 53,0* | 43,4* 43,4* | 36,8* 36,8* | 32,0* 32,0* | 28,4* 28,4* | 24,9 25,5*  | 21,6 23,2*  | 18,9 21,2*  | 16,7 19,2*  |       |       |       | 16,1 18,5* 66' 7"  |
| - 5 | SW            | 33,7* 33,7* | 54,7* 54,7* | 44,7* 44,7* | 37,8* 37,8* | 32,7* 32,7* | 28,1 28,9*  | 24,2 25,8*  | 21,1 23,3*  | 18,6 21,0*  | 16,5 18,7*  |       |       |       | 16,3 18,4* 65' 8"  |
| -10 | SW            | 32,3* 32,3* | 53,2* 53,2* | 45,2* 45,2* | 38,2* 38,2* | 32,2 33,1*  | 27,4 29,1*  | 23,7 25,8*  | 20,7 23,1*  | 18,3 20,6*  |             |       |       |       | 16,6 18,1* 64' 5"  |
| -15 | SW            | 33,1* 33,1* | 49,8* 49,8* | 44,7* 44,7* | 37,8 37,9*  | 31,5 32,8*  | 26,8 28,7*  | 23,3 25,4*  | 20,4 22,4*  | 18,2 19,5*  |             |       |       |       | 17,2 17,7* 62' 8"  |
| -20 | SW            | 34,8* 34,8* | 49,6* 49,6* | 43,0* 43,0* | 36,7* 36,7* | 31,1 31,7*  | 26,5 27,7*  | 23,0 24,3*  | 20,3 21,0*  | 17,5* 17,5* |             |       |       |       | 17,1* 17,1* 60' 6" |
| -25 | SW            |             | 46,6* 46,6* | 39,7* 39,7* | 34,2* 34,2* | 29,6* 29,6* | 25,7* 25,7* | 22,1* 22,1* |             |             |             |       |       |       | 19,5* 19,5* 53' 6" |

Height Can be slewed through 360° In longitudinal position of undercarriage Max. reach \* Limited by hydr. capacity

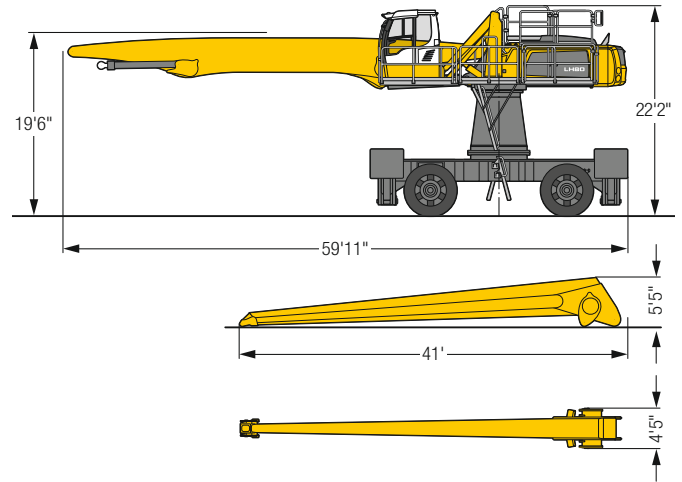
The lift capacities on the stick end without attachment are stated in lb x 1,000 and can be slewed through 360° on a firm, level supporting surface. Capacities are valid for 30" wide flat pads. Indicated loads based on the ISO 10567 standard and do not exceed 75% of tipping or 87% of hydraulic capacity. The lift capacity values indicated are attained at the corresponding operating temperature. This operating temperature is ensured by continuous movement of the boom. Weights of fitted attachments (grabs, load hooks, etc.) and load accommodation attachment are to be deducted from the lift capacity values. The lift capacity of the unit is limited by its stability, the lifting capability of the hydraulic elements, or the maximum permissible lifting capacity of the load hook.

# LH 80 M HR – Equipment GG25

## Port – Kinematic 2A



### Dimensions



### Operating weight

The operating weight includes the basic machine with 4 point outriggers, turret 6'7", hydr. cab elevation, 4 solid tires, straight boom 44'3", straight stick 39'4" and grab for loose material GMZ 80 / 5.23yd<sup>3</sup>.

Weight 207,100 lb

| ft  | Undercarriage         | 20ft        | 25ft        | 30ft        | 35ft        | 40ft        | 45ft        | 50ft        | 55ft        | 60ft        | 65ft        | 70ft        | 75ft        | 80ft        | ft in               |
|-----|-----------------------|-------------|-------------|-------------|-------------|-------------|-------------|-------------|-------------|-------------|-------------|-------------|-------------|-------------|---------------------|
| 95  | 4 pt. outriggers down |             | 28.2* 28.2* |             |             |             |             |             |             |             |             |             |             |             | 28.1* 28.1* 25' 1"  |
| 90  | 4 pt. outriggers down |             |             | 28.0* 28.0* | 24.3* 24.3* |             |             |             |             |             |             |             |             |             | 21.9* 21.9* 37' 5"  |
| 85  | 4 pt. outriggers down |             |             |             | 27.2* 27.2* | 24.3* 24.3* | 20.2* 20.2* |             |             |             |             |             |             |             | 19.0* 19.0* 46'     |
| 80  | 4 pt. outriggers down |             |             |             |             | 26.4* 26.4* | 23.9* 23.9* | 20.3* 20.3* |             |             |             |             |             |             | 17.3* 17.3* 52' 8"  |
| 75  | 4 pt. outriggers down |             |             |             |             | 27.1* 27.1* | 24.6* 24.6* | 22.5* 22.5* | 19.8* 19.8* |             |             |             |             |             | 16.1* 16.1* 58' 2"  |
| 70  | 4 pt. outriggers down |             |             |             |             | 26.7* 26.7* | 24.3* 24.3* | 22.3* 22.3* | 20.6* 20.6* | 18.7* 18.7* |             |             |             |             | 15.3* 15.3* 62' 10" |
| 65  | 4 pt. outriggers down |             |             |             |             | 26.6* 26.6* | 24.1* 24.1* | 22.1* 22.1* | 20.4* 20.4* | 19.0* 19.0* | 17.1* 17.1* |             |             |             | 14.7* 14.7* 66' 8"  |
| 60  | 4 pt. outriggers down |             |             |             |             |             | 24.1* 24.1* | 22.1* 22.1* | 20.4* 20.4* | 18.9* 18.9* | 17.6* 17.6* | 14.3* 14.3* |             |             | 14.2* 14.2* 70'     |
| 55  | 4 pt. outriggers down |             |             |             |             | 26.6* 26.6* | 24.1* 24.1* | 22.1* 22.1* | 20.4* 20.4* | 18.9* 18.9* | 17.6* 17.6* | 16.4* 16.4* |             |             | 13.9* 13.9* 72' 11" |
| 50  | 4 pt. outriggers down |             |             |             |             | 26.8* 26.8* | 24.3* 24.3* | 22.2* 22.2* | 20.4* 20.4* | 18.9* 18.9* | 17.6* 17.6* | 16.3* 16.3* | 14.1* 14.1* |             | 13.6* 13.6* 75' 4"  |
| 45  | 4 pt. outriggers down |             |             |             |             | 27.1* 27.1* | 24.5* 24.5* | 22.4* 22.4* | 20.5* 20.5* | 19.0* 19.0* | 17.6* 17.6* | 16.3* 16.3* | 15.1* 15.1* |             | 13.5* 13.5* 77' 4"  |
| 40  | 4 pt. outriggers down |             |             |             | 30.1* 30.1* | 27.6* 27.6* | 24.8* 24.8* | 22.6* 22.6* | 20.7* 20.7* | 19.1* 19.1* | 17.6* 17.6* | 16.3* 16.3* | 15.1* 15.1* |             | 13.4* 13.4* 78' 11" |
| 35  | 4 pt. outriggers down |             |             | 29.0* 29.0* | 31.7* 31.7* | 28.1* 28.1* | 25.2* 25.2* | 22.9* 22.9* | 20.9* 20.9* | 19.2* 19.2* | 17.7* 17.7* | 16.3* 16.3* | 15.0* 15.0* | 13.5* 13.5* | 13.4* 13.4* 80' 1"  |
| 30  | 4 pt. outriggers down |             | 27.7* 27.7* | 33.1* 33.1* | 32.6* 32.6* | 28.7* 28.7* | 25.6* 25.6* | 23.2* 23.2* | 21.1* 21.1* | 19.3* 19.3* | 17.8* 17.8* | 16.3* 16.3* | 15.0* 15.0* | 13.4* 13.4* | 12.9* 12.9* 81' 1"  |
| 25  | 4 pt. outriggers down | 28.8* 28.8* | 37.3* 37.3* | 39.0* 39.0* | 33.5* 33.5* | 29.3* 29.3* | 26.1* 26.1* | 23.4* 23.4* | 21.3* 21.3* | 19.4* 19.4* | 17.8* 17.8* | 16.3* 16.3* | 14.9* 14.9* | 13.2* 13.2* | 12.4* 12.4* 81' 8"  |
| 20  | 4 pt. outriggers down | 61.7* 61.7* | 48.8* 48.8* | 40.3* 40.3* | 34.4* 34.4* | 29.9* 29.9* | 26.5* 26.5* | 23.7* 23.7* | 21.4* 21.4* | 19.5* 19.5* | 17.8* 17.8* | 16.2* 16.2* | 14.7* 14.7* | 12.9* 12.9* | 11.9* 11.9* 82'     |
| 15  | 4 pt. outriggers down | 39.7* 39.7* | 50.4* 50.4* | 41.4* 41.4* | 35.1* 35.1* | 30.4* 30.4* | 26.8* 26.8* | 23.9* 23.9* | 21.5* 21.5* | 19.5* 19.5* | 17.7* 17.7* | 16.0* 16.0* | 14.4* 14.4* | 12.4* 12.4* | 11.3* 11.3* 82'     |
| 10  | 4 pt. outriggers down | 17.3* 17.3* | 50.3* 50.3* | 42.0* 42.0* | 35.5* 35.5* | 30.7* 30.7* | 26.9* 26.9* | 23.9* 23.9* | 21.5* 21.5* | 19.3* 19.3* | 17.5* 17.5* | 15.7* 15.7* | 13.9* 13.9* | 11.7* 11.7* | 10.5* 10.5* 81' 8"  |
| 5   | 4 pt. outriggers down | 14.3* 14.3* | 30.9* 30.9* | 42.0* 42.0* | 35.5* 35.5* | 30.6* 30.6* | 26.8* 26.8* | 23.8* 23.8* | 21.2* 21.2* | 19.0* 19.0* | 17.1* 17.1* | 15.2* 15.2* | 13.2* 13.2* | 10.6* 10.6* | 9.7* 9.7* 81' 1"    |
| 0   | 4 pt. outriggers down | 14.7* 14.7* | 26.3* 26.3* | 41.1* 41.1* | 34.9* 34.9* | 30.1* 30.1* | 26.4* 26.4* | 23.3* 23.3* | 20.8* 20.8* | 18.5* 18.5* | 16.4* 16.4* | 14.4* 14.4* | 12.2* 12.2* | 8.9* 8.9*   | 8.8* 8.8* 80' 2"    |
| -5  | 4 pt. outriggers down | 16.2* 16.2* | 25.6* 25.6* | 39.2* 39.2* | 33.6* 33.6* | 29.1* 29.1* | 25.5* 25.5* | 22.5* 22.5* | 19.9* 19.9* | 17.6* 17.6* | 15.5* 15.5* | 13.3* 13.3* | 10.7* 10.7* |             | 9.0* 9.0* 77' 5"    |
| -10 | 4 pt. outriggers down | 18.3* 18.3* | 26.5* 26.5* | 36.2* 36.2* | 31.4* 31.4* | 27.4* 27.4* | 24.1* 24.1* | 21.2* 21.2* | 18.6* 18.6* | 16.3* 16.3* | 14.0* 14.0* | 11.6* 11.6* |             |             | 9.6* 9.6* 73' 4"    |
| -15 | 4 pt. outriggers down |             | 28.2* 28.2* | 31.9* 31.9* | 28.2* 28.2* | 24.8* 24.8* | 21.9* 21.9* | 19.2* 19.2* | 16.8* 16.8* | 14.4* 14.4* | 12.0* 12.0* |             |             |             | 10.7* 10.7* 67' 5"  |
| -20 | 4 pt. outriggers down |             |             |             | 23.8* 23.8* | 21.3* 21.3* | 18.8* 18.8* | 16.4* 16.4* | 14.1* 14.1* |             |             |             |             |             | 13.1* 13.1* 57' 2"  |

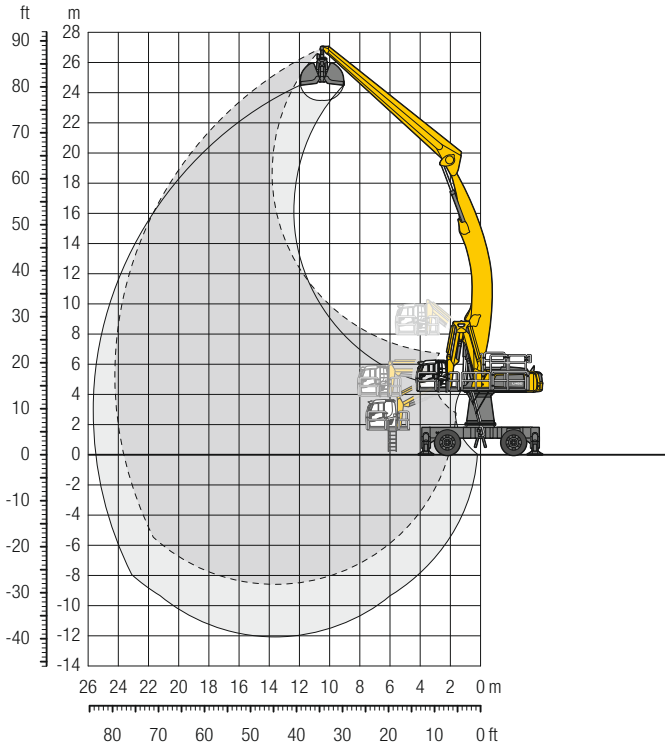
Height Can be slewed through 360° In longitudinal position of undercarriage Max. reach \* Limited by hydr. capacity

The lift capacities on the stick end without attachment are stated in lb x 1,000 and are valid on a firm, level supporting surface with blocked oscillating axle. These capacities can be slewed through 360° with the undercarriage in the transverse position. Capacities in the longitudinal position of the undercarriage (±15°) are specified over the rigid axle with the stabilizers down. Indicated loads based on the ISO 10567 standard and do not exceed 75% of tipping or 87% of hydraulic capacity. The lift capacity values indicated are attained at the corresponding operating temperature. This operating temperature is ensured by continuous movement of the boom. Weights of fitted attachments (grabs, load hooks, etc.) and load accommodation attachment are to be deducted from the lift capacity values. The lift capacity of the unit is limited by its stability, the lifting capability of the hydraulic elements, or the maximum permissible lifting capacity of the load hook.

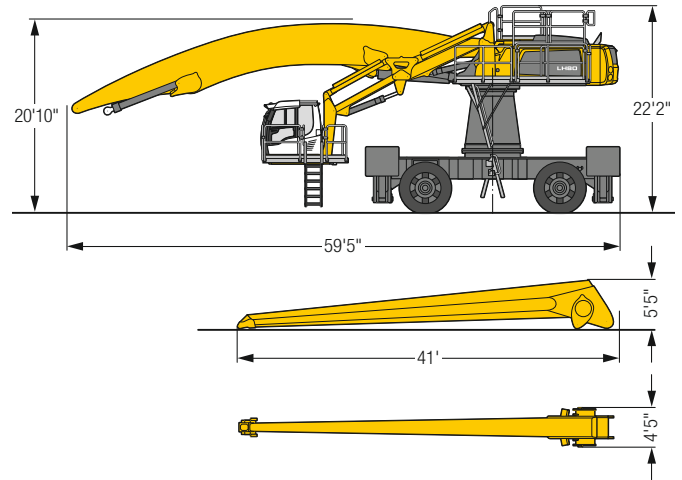


# LH 80 M HR – Equipment AG24

## Port – Kinematic 2D




### Dimensions



### Operating weight

The operating weight includes the basic machine with 4 point outriggers, turret 6'7", hydr. cab elevation, 4 solid tires, angled boom 44'3", straight stick 39'4" and grab for loose material GMZ 80 / 5.23yd<sup>3</sup>.

Weight 214,400 lb

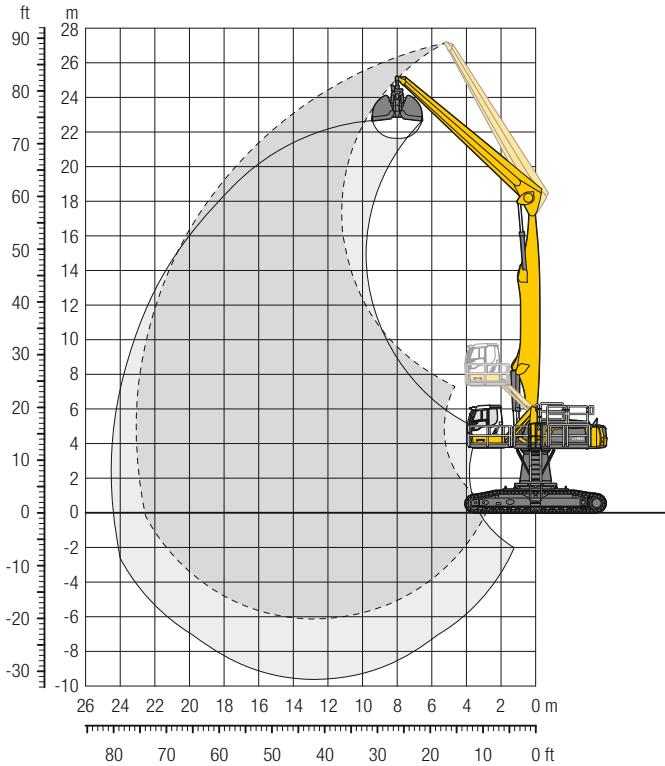
| ft  | Undercarriage         | 20ft        | 25ft        | 30ft        | 35ft        | 40ft        | 45ft        | 50ft        | 55ft        | 60ft        | 65ft        | 70ft        | 75ft        | 80ft |  | ft in       |        |
|-----|-----------------------|-------------|-------------|-------------|-------------|-------------|-------------|-------------|-------------|-------------|-------------|-------------|-------------|------|---|-------------|--------|
| 90  | 4 pt. outriggers down |             |             |             |             |             |             |             |             |             |             |             |             |      |   |             |        |
| 85  | 4 pt. outriggers down |             |             |             |             | 18,8* 18,8* |             |             |             |             |             |             |             |      |   | 17,9* 17,9* | 41' 1" |
| 80  | 4 pt. outriggers down |             |             |             |             |             | 19,1* 19,1* |             |             |             |             |             |             |      |   | 16,3* 16,3* | 48' 6" |
| 75  | 4 pt. outriggers down |             |             |             |             |             | 20,4* 20,4* | 19,0* 19,0* |             |             |             |             |             |      |   | 15,3* 15,3* | 54' 5" |
| 70  | 4 pt. outriggers down |             |             |             |             |             | 20,1* 20,1* | 18,7* 18,7* | 17,5* 17,5* |             |             |             |             |      |   | 14,6* 14,6* | 59' 4" |
| 65  | 4 pt. outriggers down |             |             |             |             |             |             | 18,5* 18,5* | 17,3* 17,3* | 16,3* 16,3* |             |             |             |      |   | 14,1* 14,1* | 63' 5" |
| 60  | 4 pt. outriggers down |             |             |             |             |             |             | 18,4* 18,4* | 17,2* 17,2* | 16,2* 16,2* | 15,4* 15,4* |             |             |      |   | 13,8* 13,8* | 66'11" |
| 55  | 4 pt. outriggers down |             |             |             |             |             | 19,9* 19,9* | 18,4* 18,4* | 17,2* 17,2* | 16,2* 16,2* | 15,3* 15,3* |             |             |      |   | 13,6* 13,6* | 69'11" |
| 50  | 4 pt. outriggers down |             |             |             |             |             | 20,1* 20,1* | 18,6* 18,6* | 17,3* 17,3* | 16,2* 16,2* | 15,3* 15,3* | 14,5* 14,5* |             |      |   | 13,4* 13,4* | 72' 5" |
| 45  | 4 pt. outriggers down |             |             |             |             |             | 20,4* 20,4* | 18,8* 18,8* | 17,4* 17,4* | 16,3* 16,3* | 15,4* 15,4* | 14,5* 14,5* |             |      |   | 13,4* 13,4* | 74' 6" |
| 40  | 4 pt. outriggers down |             |             |             |             | 22,8* 22,8* | 20,8* 20,8* | 19,1* 19,1* | 17,7* 17,7* | 16,5* 16,5* | 15,5* 15,5* | 14,6* 14,6* | 13,8* 13,8* |      |   | 13,4* 13,4* | 76' 1" |
| 35  | 4 pt. outriggers down |             |             |             |             | 23,5* 23,5* | 21,3* 21,3* | 19,5* 19,5* | 18,0* 18,0* | 16,7* 16,7* | 15,6* 15,6* | 14,7* 14,7* | 13,9* 13,9* |      |   | 13,5* 13,5* | 77' 6" |
| 30  | 4 pt. outriggers down |             |             | 31,2* 31,2* | 27,3* 27,3* | 24,3* 24,3* | 21,9* 21,9* | 19,9* 19,9* | 18,3* 18,3* | 17,0* 17,0* | 15,8* 15,8* | 14,8* 14,8* | 13,9* 13,9* |      |   | 13,4* 13,4* | 78' 5" |
| 25  | 4 pt. outriggers down |             | 39,1* 39,1* | 32,9* 32,9* | 28,5* 28,5* | 25,1* 25,1* | 22,5* 22,5* | 20,4* 20,4* | 18,7* 18,7* | 17,2* 17,2* | 16,0* 16,0* | 15,0* 15,0* | 14,0* 14,0* |      |   | 13,3* 13,3* | 79' 1" |
| 20  | 4 pt. outriggers down | 52,7* 52,7* | 41,8* 41,8* | 34,7* 34,7* | 29,7* 29,7* | 26,0* 26,0* | 23,1* 23,1* | 20,9* 20,9* | 19,0* 19,0* | 17,5* 17,5* | 16,2* 16,2* | 15,1* 15,1* | 14,1* 14,1* |      |   | 13,2* 13,2* | 79' 5" |
| 15  | 4 pt. outriggers down | 56,8* 56,8* | 44,3* 44,3* | 36,4* 36,4* | 30,9* 30,9* | 26,9* 26,9* | 23,8* 23,8* | 21,4* 21,4* | 19,4* 19,4* | 17,8* 17,8* | 16,4* 16,4* | 15,2* 15,2* | 14,1* 14,1* |      |   | 13,1* 13,1* | 79' 5" |
| 10  | 4 pt. outriggers down | 29,7* 29,7* | 46,4* 46,4* | 37,8* 37,8* | 31,9* 31,9* | 27,7* 27,7* | 24,4* 24,4* | 21,8* 21,8* | 19,8* 19,8* | 18,0* 18,0* | 16,6* 16,6* | 15,3* 15,3* | 14,1* 14,1* |      |   | 13,0* 13,0* | 79' 1" |
| 5   | 4 pt. outriggers down | 22,7* 22,7* | 42,1* 42,1* | 39,0* 39,0* | 32,8* 32,8* | 28,3* 28,3* | 24,9* 24,9* | 22,2* 22,2* | 20,0* 20,0* | 18,2* 18,2* | 16,7* 16,7* | 15,3* 15,3* | 13,9* 13,9* |      |   | 12,9* 12,9* | 78' 6" |
| 0   | 4 pt. outriggers down | 21,2* 21,2* | 34,1* 34,1* | 39,6* 39,6* | 33,4* 33,4* | 28,8* 28,8* | 25,2* 25,2* | 22,4* 22,4* | 20,2* 20,2* | 18,3* 18,3* | 16,6* 16,6* | 15,1* 15,1* | 13,6* 13,6* |      |   | 12,8* 12,8* | 77' 6" |
| -5  | 4 pt. outriggers down | 21,5* 21,5* | 31,5* 31,5* | 39,7* 39,7* | 33,5* 33,5* | 28,9* 28,9* | 25,3* 25,3* | 22,5* 22,5* | 20,2* 20,2* | 18,2* 18,2* | 16,4* 16,4* | 14,8* 14,8* | 13,1* 13,1* |      |   | 12,6* 12,6* | 76' 2" |
| -10 | 4 pt. outriggers down | 22,5* 22,5* | 31,0* 31,0* | 39,0* 39,0* | 33,1* 33,1* | 28,7* 28,7* | 25,1* 25,1* | 22,3* 22,3* | 19,9* 19,9* | 17,8* 17,8* | 16,0* 16,0* | 14,2* 14,2* |             |      | 12,3* 12,3*   | 74' 6"      |        |
| -15 | 4 pt. outriggers down | 23,9* 23,9* | 31,5* 31,5* | 37,5* 37,5* | 32,1* 32,1* | 27,9* 27,9* | 24,5* 24,5* | 21,7* 21,7* | 19,3* 19,3* | 17,2* 17,2* | 15,2* 15,2* | 13,1* 13,1* |             |      | 11,9* 11,9*   | 72' 5"      |        |
| -20 | 4 pt. outriggers down |             | 32,6* 32,6* | 35,0* 35,0* | 30,3* 30,3* | 26,5* 26,5* | 23,3* 23,3* | 20,6* 20,6* | 18,2* 18,2* | 16,0* 16,0* | 13,8* 13,8* |             |             |      | 12,0* 12,0*   | 68' 7"      |        |
| -25 | 4 pt. outriggers down |             | 31,5* 31,5* | 27,6* 27,6* | 24,3* 24,3* | 21,4* 21,4* | 18,8* 18,8* | 16,4* 16,4* |             |             |             |             |             |      | 14,1* 14,1*   | 59'11"      |        |

 Height  Can be slewed through 360°  In longitudinal position of undercarriage  Max. reach \* Limited by hydr. capacity

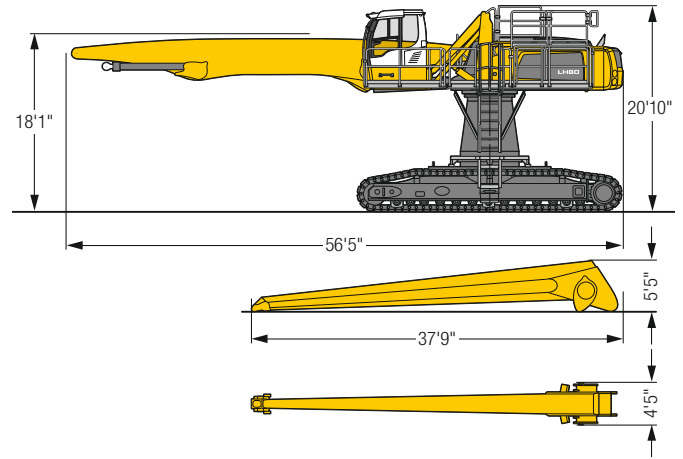
The lift capacities on the stick end without attachment are stated in lb x 1,000 and are valid on a firm, level supporting surface with blocked oscillating axle. These capacities can be slewed through 360° with the undercarriage in the transverse position. Capacities in the longitudinal position of the undercarriage (±15°) are specified over the rigid axle with the stabilizers down. Indicated loads based on the ISO 10567 standard and do not exceed 75% of tipping or 87% of hydraulic capacity. The lift capacity values indicated are attained at the corresponding operating temperature. This operating temperature is ensured by continuous movement of the boom. Weights of fitted attachments (grabs, load hooks, etc.) and load accommodation attachment are to be deducted from the lift capacity values. The lift capacity of the unit is limited by its stability, the lifting capability of the hydraulic elements, or the maximum permissible lifting capacity of the load hook.

# LH 80 C HR – Equipment GG23

## Port – Kinematic 2A



### Dimensions



### Operating weight and ground pressure

The operating weight includes the basic machine with turret 6'7", hydr. cab elevation, straight boom 41', straight stick 36'1" and grab for loose material GMZ 80 / 7.85 yd<sup>3</sup>.

|                 |            |
|-----------------|------------|
| Weight          | 208,200 lb |
| Pad width       | 30"        |
| Ground pressure | on request |

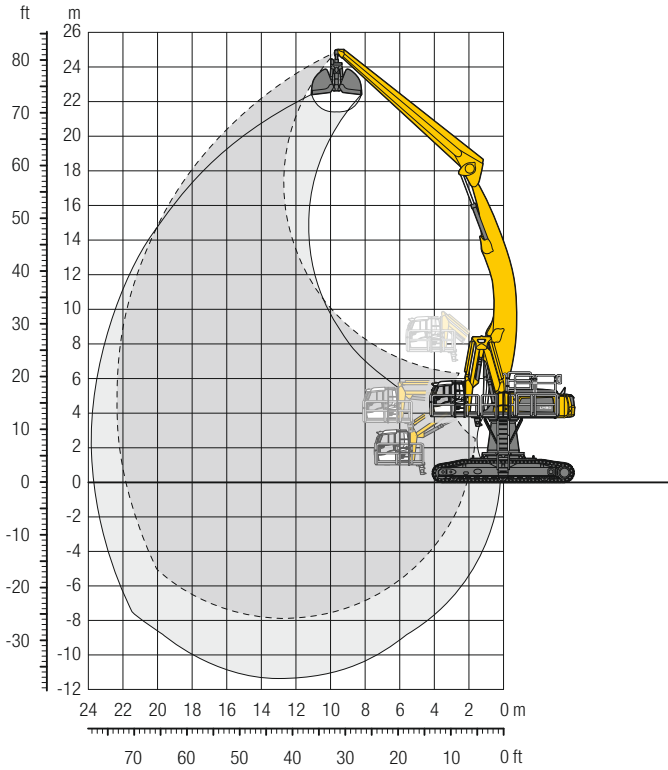
| ft  | Undercarriage | Reach (ft)  |             |             |             |             |             |             |             |             |             |             |             |      |    | ft in |       |       |        |
|-----|---------------|-------------|-------------|-------------|-------------|-------------|-------------|-------------|-------------|-------------|-------------|-------------|-------------|------|----|-------|-------|-------|--------|
|     |               | 20ft        | 25ft        | 30ft        | 35ft        | 40ft        | 45ft        | 50ft        | 55ft        | 60ft        | 65ft        | 70ft        | 75ft        | 80ft | ft | in    |       |       |        |
| 85  | SW            |             | 31.7* 31.7* |             |             |             |             |             |             |             |             |             |             |      |    |       | 26.7* | 26.7* | 29'11" |
| 80  | SW            |             |             | 30.8* 30.8* | 27.2* 27.2* |             |             |             |             |             |             |             |             |      |    |       | 22.2* | 22.2* | 39' 8" |
| 75  | SW            |             |             |             | 29.8* 29.8* | 26.8* 26.8* | 22.3* 22.3* |             |             |             |             |             |             |      |    |       | 19.7* | 19.7* | 46'11" |
| 70  | SW            |             |             |             | 30.9* 30.9* | 28.3* 28.3* | 25.9* 25.9* | 21.9* 21.9* |             |             |             |             |             |      |    |       | 18.2* | 18.2* | 52' 8" |
| 65  | SW            |             |             |             |             | 27.8* 27.8* | 25.5* 25.5* | 23.6* 23.6* | 20.8* 20.8* |             |             |             |             |      |    |       | 17.1* | 17.1* | 57' 6" |
| 60  | SW            |             |             |             |             | 27.6* 27.6* | 25.3* 25.3* | 23.4* 23.4* | 21.8* 21.8* | 18.8* 18.8* |             |             |             |      |    |       | 16.4* | 16.4* | 61' 5" |
| 55  | SW            |             |             |             |             | 27.5* 27.5* | 25.2* 25.2* | 23.3* 23.3* | 21.7* 21.7* | 20.3* 20.3* |             |             |             |      |    |       | 15.8* | 15.8* | 64'10" |
| 50  | SW            |             |             |             |             | 27.6* 27.6* | 25.3* 25.3* | 23.3* 23.3* | 21.7* 21.7* | 20.2* 20.2* | 18.9* 18.9* |             |             |      |    |       | 15.5* | 15.5* | 67' 7" |
| 45  | SW            |             |             |             | 30.9* 30.9* | 27.9* 27.9* | 25.5* 25.5* | 23.4* 23.4* | 21.7* 21.7* | 20.2* 20.2* | 18.9* 18.9* |             |             |      |    |       | 15.2* | 15.2* | 69'11" |
| 40  | SW            |             |             |             | 31.5* 31.5* | 28.4* 28.4* | 25.8* 25.8* | 23.7* 23.7* | 21.9* 21.9* | 20.3* 20.3* | 18.9* 18.9* | 17.4* 17.4* |             |      |    |       | 15.0* | 15.0* | 71'10" |
| 35  | SW            |             |             | 32.6* 32.6* | 32.3* 32.3* | 29.0* 29.0* | 26.2* 26.2* | 24.0* 24.0* | 22.0* 22.0* | 20.4* 20.4* | 18.9* 18.9* | 17.4* 17.4* |             |      |    |       | 15.0* | 15.0* | 73' 4" |
| 30  | SW            |             | 30.8* 30.8* | 36.0* 36.0* | 33.3* 33.3* | 29.7* 29.7* | 26.7* 26.7* | 24.3* 24.3* | 22.3* 22.3* | 20.5* 20.5* | 18.9* 18.9* | 17.4* 17.4* |             |      |    |       | 15.0* | 15.0* | 74' 5" |
| 25  | SW            | 29.8* 29.8* | 38.3* 38.3* | 39.8* 39.8* | 34.5* 34.5* | 30.4* 30.4* | 27.2* 27.2* | 24.7* 24.7* | 22.5* 22.5* | 20.6* 20.6* | 18.9* 18.9* | 17.3* 17.3* | 15.2* 15.2* |      |    |       | 15.1* | 15.1* | 75' 2" |
| 20  | SW            | 60.2* 60.2* | 49.7* 49.7* | 41.5* 41.5* | 35.6* 35.6* | 31.2* 31.2* | 27.8* 27.8* | 25.0* 25.0* | 22.7* 22.7* | 20.7* 20.7* | 18.9* 18.9* | 17.1* 17.1* | 14.9* 14.9* |      |    |       | 14.5* | 14.5* | 75' 7" |
| 15  | SW            | 66.3* 66.3* | 52.1* 52.1* | 43.0* 43.0* | 36.6* 36.6* | 31.9* 31.9* | 28.2* 28.2* | 25.3* 25.3* | 22.8* 22.8* | 20.7* 20.7* | 18.7* 18.7* | 16.8* 16.8* | 14.3* 14.3* |      |    |       | 13.8* | 13.8* | 75' 8" |
| 10  | SW            | 27.1* 27.1* | 53.7* 53.7* | 44.0* 44.0* | 37.3* 37.3* | 32.3* 32.3* | 28.5* 28.5* | 25.4* 25.4* | 22.8* 22.8* | 20.5* 20.5* | 18.4* 18.4* | 16.3* 16.3* | 13.4* 13.4* |      |    |       | 13.0* | 13.0* | 75' 6" |
| 5   | SW            | 19.5* 19.5* | 46.2* 46.2* | 44.4* 44.4* | 37.6* 37.6* | 32.4* 32.4* | 28.5* 28.5* | 25.3* 25.3* | 22.6* 22.6* | 20.2* 20.2* | 17.9* 17.9* | 15.5* 15.5* |             |      |    |       | 12.1* | 12.1* | 74'11" |
| 0   | SW            | 18.8* 18.8* | 35.8* 35.8* | 43.8* 43.8* | 37.2* 37.2* | 32.1* 32.1* | 28.1* 28.1* | 24.8* 24.8* | 22.0* 22.0* | 19.5* 19.5* | 17.0* 17.0* | 14.3* 14.3* |             |      |    |       | 10.9* | 10.9* | 74'    |
| - 5 | SW            | 20.2* 20.2* | 33.3* 33.3* | 42.1* 42.1* | 35.9* 35.9* | 31.1* 31.1* | 27.2* 27.2* | 23.9* 23.9* | 21.0* 21.0* | 18.4* 18.4* | 15.6* 15.6* | 12.3* 12.3* |             |      |    |       | 11.3* | 11.3* | 71' 2" |
| -10 | SW            | 22.5* 22.5* | 33.7* 33.7* | 39.0* 39.0* | 33.6* 33.6* | 29.2* 29.2* | 25.5* 25.5* | 22.3* 22.3* | 19.4* 19.4* | 16.6* 16.6* | 13.5* 13.5* |             |             |      |    |       | 12.2* | 12.2* | 66'11" |
| -15 | SW            |             | 35.5* 35.5* | 34.4* 34.4* | 30.1* 30.1* | 26.4* 26.4* | 23.0* 23.0* | 20.0* 20.0* | 17.0* 17.0* | 14.0* 14.0* |             |             |             |      |    |       | 13.8* | 13.8* | 60' 4" |
| -20 | SW            |             |             |             |             | 22.3* 22.3* |             |             |             |             |             |             |             |      |    |       | 19.5* | 19.5* | 44'10" |

Height Can be slewed through 360° In longitudinal position of undercarriage Max. reach \* Limited by hydr. capacity

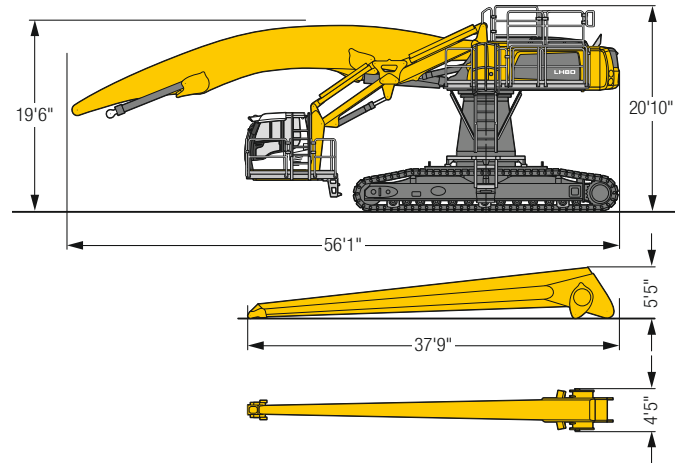
The lift capacities on the stick end without attachment are stated in lb x 1,000 and can be slewed through 360° on a firm, level supporting surface. Capacities are valid for 30" wide flat pads. Indicated loads based on the ISO 10567 standard and do not exceed 75% of tipping or 87% of hydraulic capacity. The lift capacity values indicated are attained at the corresponding operating temperature. This operating temperature is ensured by continuous movement of the boom. Weights of fitted attachments (grabs, load hooks, etc.) and load accommodation attachment are to be deducted from the lift capacity values. The lift capacity of the unit is limited by its stability, the lifting capability of the hydraulic elements, or the maximum permissible lifting capacity of the load hook.

# LH 80 C HR – Equipment AG22

## Port – Kinematic 2D



### Dimensions



### Operating weight and ground pressure

The operating weight includes the basic machine with turret 6'7", hydr. cab elevation, angled boom 41', straight stick 36'1" and grab for loose material GMZ 80/7.85 yd<sup>3</sup>.

|                 |            |
|-----------------|------------|
| Weight          | 215,300 lb |
| Pad width       | 30"        |
| Ground pressure | on request |

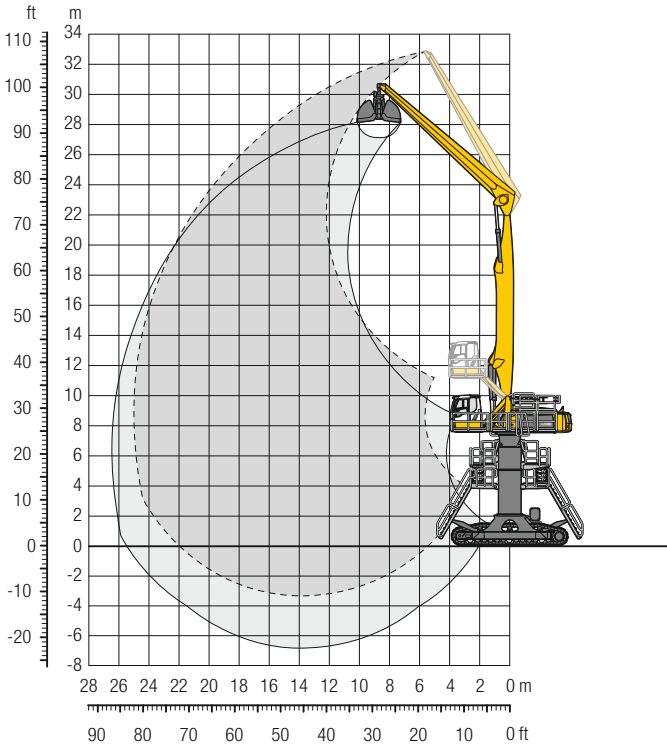
| ft  | Undercarriage | Reach (ft) |       |       |       |       |       |       |       |       |       |       |       |       |       | ft in |       |       |        |        |        |       |        |        |
|-----|---------------|------------|-------|-------|-------|-------|-------|-------|-------|-------|-------|-------|-------|-------|-------|-------|-------|-------|--------|--------|--------|-------|--------|--------|
|     |               | 20ft       | 25ft  | 30ft  | 35ft  | 40ft  | 45ft  | 50ft  | 55ft  | 60ft  | 65ft  | 70ft  | 75ft  | 80ft  | ft    | in    |       |       |        |        |        |       |        |        |
| 80  | SW            |            |       |       |       |       |       |       |       |       |       |       |       |       |       |       | 20,9" | 20,9" | 34'11" |        |        |       |        |        |
| 75  | SW            |            |       |       |       | 21,4" | 21,4" |       |       |       |       |       |       |       |       |       | 18,6" | 18,6" | 42'11" |        |        |       |        |        |
| 70  | SW            |            |       |       |       | 23,5" | 23,5" | 21,3" | 21,3" |       |       |       |       |       |       |       | 17,3" | 17,3" | 49' 2" |        |        |       |        |        |
| 65  | SW            |            |       |       |       | 21,4" | 21,4" | 20,2" | 20,2" |       |       |       |       |       |       |       | 16,4" | 16,4" | 54' 2" |        |        |       |        |        |
| 60  | SW            |            |       |       |       | 21,1" | 21,1" | 19,9" | 19,9" | 18,8" | 18,8" |       |       |       |       |       | 15,8" | 15,8" | 58' 5" |        |        |       |        |        |
| 55  | SW            |            |       |       |       | 21,0" | 21,0" | 19,7" | 19,7" | 18,7" | 18,7" | 17,8" | 17,8" |       |       |       | 15,4" | 15,4" | 61'11" |        |        |       |        |        |
| 50  | SW            |            |       |       |       | 21,1" | 21,1" | 19,8" | 19,8" | 18,7" | 18,7" | 17,7" | 17,7" |       |       |       | 15,1" | 15,1" | 64'10" |        |        |       |        |        |
| 45  | SW            |            |       |       |       | 23,1" | 23,1" | 21,4" | 21,4" | 19,9" | 19,9" | 18,8" | 18,8" | 17,8" | 17,8" | 16,9" | 16,9" | 15,0" | 15,0"  | 67' 4" |        |       |        |        |
| 40  | SW            |            |       |       |       | 23,6" | 23,6" | 21,8" | 21,8" | 20,2" | 20,2" | 19,0" | 19,0" | 17,9" | 17,9" | 17,0" | 17,0" | 15,0" | 15,0"  | 69' 2" |        |       |        |        |
| 35  | SW            |            |       |       | 26,8" | 26,8" | 24,3" | 24,3" | 22,3" | 22,3" | 20,6" | 20,6" | 19,2" | 19,2" | 18,1" | 18,1" | 17,1" | 17,1" | 16,2"  | 16,2"  | 70'10" |       |        |        |
| 30  | SW            |            |       |       | 28,0" | 28,0" | 25,2" | 25,2" | 22,9" | 22,9" | 21,1" | 21,1" | 19,6" | 19,6" | 18,3" | 18,3" | 17,3" | 17,3" | 16,3"  | 16,3"  | 72' 2" |       |        |        |
| 25  | SW            |            | 39,4" | 39,4" | 33,6" | 33,6" | 29,4" | 29,4" | 26,2" | 26,2" | 23,7" | 23,7" | 21,7" | 21,7" | 20,0" | 20,0" | 18,6" | 18,6" | 17,5"  | 17,5"  | 16,4"  | 16,4" | 72'10" |        |
| 20  | SW            | 53,1"      | 53,1" | 42,6" | 42,6" | 35,7" | 35,7" | 30,9" | 30,9" | 27,3" | 27,3" | 24,5" | 24,5" | 22,3" | 22,3" | 20,5" | 20,5" | 19,0" | 19,0"  | 17,7"  | 17,7"  | 16,5" | 16,5"  | 73' 2" |
| 15  | SW            | 58,3"      | 58,3" | 45,8" | 45,8" | 37,8" | 37,8" | 32,3" | 32,3" | 28,3" | 28,3" | 25,3" | 25,3" | 22,9" | 22,9" | 20,9" | 20,9" | 19,3" | 19,3"  | 17,9"  | 17,9"  | 16,6" | 16,6"  | 73' 4" |
| 10  | SW            | 43,8"      | 43,8" | 48,5" | 48,5" | 39,7" | 39,7" | 33,7" | 33,7" | 29,3" | 29,3" | 26,0" | 26,0" | 23,4" | 23,4" | 21,3" | 21,3" | 19,5" | 19,5"  | 18,0"  | 18,0"  | 16,6" | 16,6"  | 73' 1" |
| 5   | SW            | 29,5"      | 29,5" | 50,6" | 50,6" | 41,3" | 41,3" | 34,9" | 34,9" | 30,2" | 30,2" | 26,7" | 26,7" | 23,9" | 23,9" | 21,6" | 21,6" | 19,7" | 19,7"  | 18,0"  | 18,0"  | 16,4" | 16,4"  | 72' 6" |
| 0   | SW            | 26,2"      | 26,2" | 45,1" | 45,1" | 42,3" | 42,3" | 35,6" | 35,6" | 30,8" | 30,8" | 27,1" | 27,1" | 24,2" | 24,2" | 21,8" | 21,8" | 19,7" | 19,7"  | 17,9"  | 17,9"  | 16,1" | 16,1"  | 71' 7" |
| - 5 | SW            | 26,0"      | 26,0" | 40,0" | 40,0" | 42,5" | 42,5" | 35,9" | 35,9" | 31,0" | 31,0" | 27,2" | 27,2" | 24,2" | 24,2" | 21,7" | 21,7" | 19,5" | 19,5"  | 17,5"  | 17,5"  | 15,3" | 15,3"  | 70' 2" |
| -10 | SW            | 27,0"      | 27,0" | 38,5" | 38,5" | 41,9" | 41,9" | 35,6" | 35,6" | 30,8" | 30,8" | 27,0" | 27,0" | 23,9" | 23,9" | 21,3" | 21,3" | 19,0" | 19,0"  | 16,7"  | 16,7"  | 14,8" | 14,8"  | 68' 6" |
| -15 | SW            | 28,6"      | 28,6" | 38,8" | 38,8" | 40,3" | 40,3" | 34,5" | 34,5" | 29,9" | 29,9" | 26,2" | 26,2" | 23,1" | 23,1" | 20,4" | 20,4" | 17,9" | 17,9"  | 15,2"  | 15,2"  | 14,3" | 14,3"  | 66' 5" |
| -20 | SW            |            |       | 40,1" | 40,1" | 37,5" | 37,5" | 32,4" | 32,4" | 28,2" | 28,2" | 24,7" | 24,7" | 21,7" | 21,7" | 18,9" | 18,9" | 16,0" | 16,0"  | 15,3"  | 15,3"  | 13,3" | 13,3"  | 61' 1" |
| -25 | SW            |            |       |       |       | 29,1" | 29,1" | 25,5" | 25,5" | 22,2" | 22,2" |       |       |       |       |       |       |       |        |        |        | 19,7" | 19,7"  | 49' 2" |

Height Can be slewed through 360° In longitudinal position of undercarriage Max. reach \* Limited by hydr. capacity

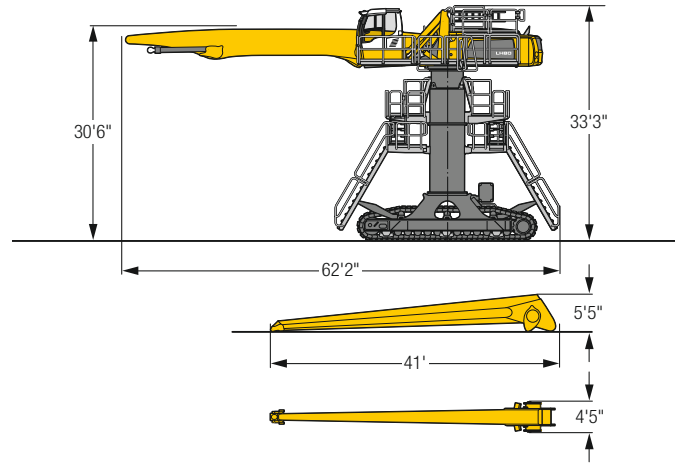
The lift capacities on the stick end without attachment are stated in lb x 1,000 and can be slewed through 360° on a firm, level supporting surface. Capacities are valid for 30" wide flat pads. Indicated loads based on the ISO 10567 standard and do not exceed 75% of tipping or 87% of hydraulic capacity. The lift capacity values indicated are attained at the corresponding operating temperature. This operating temperature is ensured by continuous movement of the boom. Weights of fitted attachments (grabs, load hooks, etc.) and load accommodation attachment are to be deducted from the lift capacity values. The lift capacity of the unit is limited by its stability, the lifting capability of the hydraulic elements, or the maximum permissible lifting capacity of the load hook.

# LH 80 C Gantry – Equipment GG25

## Port – Kinematic 2A



### Dimensions



### Operating weight and ground pressure

The operating weight includes the basic machine with hydr. cab elevation, straight boom 44'3", straight stick 39'4" and grab for loose material GMZ 80 / 5.23 yd<sup>3</sup>.

|                 |            |
|-----------------|------------|
| Weight          | 256,100 lb |
| Pad width       | 30"        |
| Ground pressure | on request |

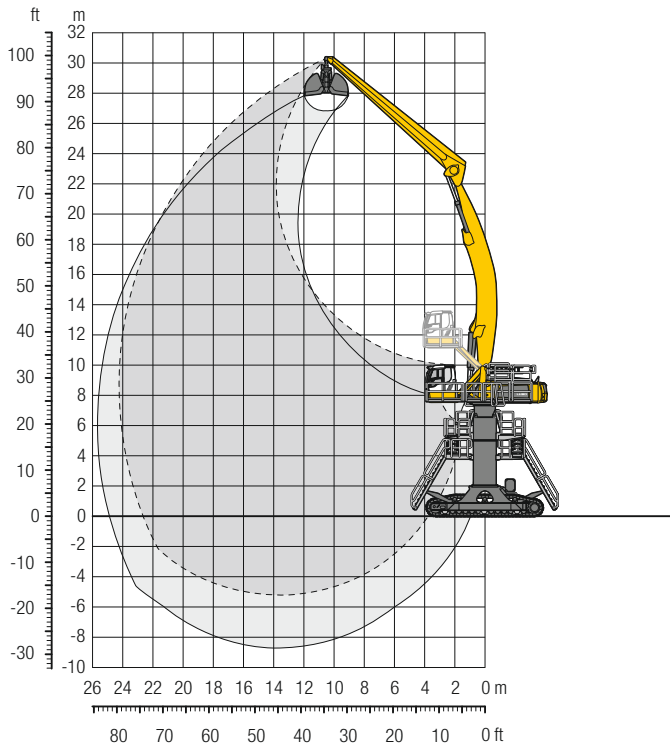
| ft   | Undercarriage | 20 ft       | 25 ft       | 30 ft       | 35 ft       | 40 ft       | 45 ft       | 50 ft       | 55 ft       | 60 ft       | 65 ft       | 70 ft       | 75 ft       | 80 ft       | ft in              |
|------|---------------|-------------|-------------|-------------|-------------|-------------|-------------|-------------|-------------|-------------|-------------|-------------|-------------|-------------|--------------------|
| 105  | Gantry        |             | 29.1* 29.1* |             |             |             |             |             |             |             |             |             |             |             | 26.4* 26.4* 27'11" |
| 100  | Gantry        |             |             | 28.4* 28.4* | 25.1* 25.1* |             |             |             |             |             |             |             |             |             | 21.2* 21.2* 39' 2" |
| 95   | Gantry        |             |             |             | 27.5* 27.5* | 24.9* 24.9* | 21.2* 21.2* |             |             |             |             |             |             |             | 18.7* 18.7* 47' 5" |
| 90   | Gantry        |             |             |             |             | 26.7* 26.7* | 24.4* 24.4* | 21.0* 21.0* |             |             |             |             |             |             | 17.0* 17.0* 53'10" |
| 85   | Gantry        |             |             |             |             | 27.0* 27.0* | 24.5* 24.5* | 22.5* 22.5* | 20.4* 20.4* |             |             |             |             |             | 15.9* 15.9* 59' 1" |
| 80   | Gantry        |             |             |             |             | 26.7* 26.7* | 24.3* 24.3* | 22.2* 22.2* | 20.6* 20.6* | 19.1* 19.1* |             |             |             |             | 15.1* 15.1* 63' 7" |
| 75   | Gantry        |             |             |             |             | 26.5* 26.5* | 24.1* 24.1* | 22.1* 22.1* | 20.4* 20.4* | 19.0* 19.0* | 17.7* 17.7* |             |             |             | 14.6* 14.6* 67' 5" |
| 70   | Gantry        |             |             |             |             | 26.5* 26.5* | 24.1* 24.1* | 22.1* 22.1* | 20.4* 20.4* | 18.9* 18.9* | 17.6* 17.6* | 15.1* 15.1* |             |             | 14.1* 14.1* 70' 7" |
| 65   | Gantry        |             |             |             |             | 26.6* 26.6* | 24.1* 24.1* | 22.1* 22.1* | 20.4* 20.4* | 18.9* 18.9* | 17.6* 17.6* | 16.4* 16.4* |             |             | 13.8* 13.8* 73' 5" |
| 60   | Gantry        |             |             |             |             | 26.8* 26.8* | 24.3* 24.3* | 22.2* 22.2* | 20.4* 20.4* | 18.9* 18.9* | 17.6* 17.6* | 16.3* 16.3* | 14.8* 14.8* |             | 13.6* 13.6* 75' 8" |
| 55   | Gantry        |             |             |             |             | 27.2* 27.2* | 24.6* 24.6* | 22.4* 22.4* | 20.6* 20.6* | 19.0* 19.0* | 17.6* 17.6* | 16.3* 16.3* | 15.1* 15.1* |             | 13.5* 13.5* 77' 7" |
| 50   | Gantry        |             |             |             | 30.4* 30.4* | 27.7* 27.7* | 24.9* 24.9* | 22.6* 22.6* | 20.7* 20.7* | 19.1* 19.1* | 17.6* 17.6* | 16.3* 16.3* | 15.1* 15.1* |             | 13.4* 13.4* 79' 1" |
| 45   | Gantry        |             |             | 29.6* 29.6* | 31.9* 31.9* | 28.2* 28.2* | 25.3* 25.3* | 22.9* 22.9* | 20.9* 20.9* | 19.2* 19.2* | 17.7* 17.7* | 16.3* 16.3* | 15.0* 15.0* | 13.5* 13.5* | 13.4* 13.4* 80' 5" |
| 40   | Gantry        |             | 28.8* 28.8* | 34.4* 34.4* | 32.8* 32.8* | 28.8* 28.8* | 25.7* 25.7* | 23.2* 23.2* | 21.1* 21.1* | 19.3* 19.3* | 17.8* 17.8* | 16.3* 16.3* | 15.0* 15.0* | 13.4* 13.4* | 12.9* 12.9* 81' 2" |
| 35   | Gantry        | 32.3* 32.3* | 40.8* 40.8* | 39.3* 39.3* | 33.7* 33.7* | 29.4* 29.4* | 26.2* 26.2* | 23.5* 23.5* | 21.3* 21.3* | 19.4* 19.4* | 17.8* 17.8* | 16.3* 16.3* | 14.8* 14.8* | 13.1* 13.1* | 12.3* 12.3* 81'10" |
| 30   | Gantry        | 62.3* 62.3* | 49.1* 49.1* | 40.5* 40.5* | 34.5* 34.5* | 30.0* 30.0* | 26.5* 26.5* | 23.7* 23.7* | 21.4* 21.4* | 19.5* 19.5* | 17.8* 17.8* | 16.2* 16.2* | 14.6* 14.6* | 12.8* 12.8* | 11.8* 11.8* 82' 1" |
| 25   | Gantry        | 30.7* 30.7* | 50.6* 50.6* | 41.5* 41.5* | 35.2* 35.2* | 30.5* 30.5* | 26.8* 26.8* | 23.9* 23.9* | 21.5* 21.5* | 19.5* 19.5* | 17.6* 17.6* | 16.0* 16.0* | 14.3* 14.3* | 12.3* 12.3* | 11.1* 11.1* 82'    |
| 20   | Gantry        | 16.2* 16.2* | 43.8* 43.8* | 42.1* 42.1* | 35.5* 35.5* | 30.7* 30.7* | 26.9* 26.9* | 23.9* 23.9* | 21.4* 21.4* | 19.3* 19.3* | 17.4* 17.4* | 15.6* 15.6* | 13.8* 13.8* | 11.5* 11.5* | 10.4* 10.4* 81' 7" |
| 15   | Gantry        | 14.2* 14.2* | 29.5* 29.5* | 41.9* 41.9* | 35.4* 35.4* | 30.6* 30.6* | 26.8* 26.8* | 23.7* 23.7* | 21.2* 21.2* | 19.0* 19.0* | 17.0* 17.0* | 15.1* 15.1* | 13.0* 13.0* | 10.3* 10.3* | 9.6* 9.6* 81'      |
| 10   | Gantry        | 14.9* 14.9* | 26.0* 26.0* | 40.8* 40.8* | 34.7* 34.7* | 30.0* 30.0* | 26.3* 26.3* | 23.2* 23.2* | 20.6* 20.6* | 18.4* 18.4* | 16.3* 16.3* | 14.2* 14.2* | 11.9* 11.9* |             | 8.6* 8.6* 79'11"   |
| 5    | Gantry        | 16.6* 16.6* | 25.7* 25.7* | 38.8* 38.8* | 33.2* 33.2* | 28.9* 28.9* | 25.3* 25.3* | 22.3* 22.3* | 19.7* 19.7* | 17.4* 17.4* | 15.2* 15.2* | 13.0* 13.0* | 10.3* 10.3* |             | 9.1* 9.1* 76' 8"   |
| 0    | Gantry        | 18.7* 18.7* | 26.7* 26.7* | 35.5* 35.5* | 30.9* 30.9* | 27.0* 27.0* | 23.7* 23.7* | 20.9* 20.9* | 18.3* 18.3* | 16.0* 16.0* | 13.7* 13.7* | 11.2* 11.2* |             |             | 9.8* 9.8* 72' 4"   |
| - 5  | Gantry        |             | 28.5* 28.5* | 31.0* 31.0* | 27.5* 27.5* | 24.3* 24.3* | 21.4* 21.4* | 18.8* 18.8* | 16.3* 16.3* | 14.0* 14.0* | 11.5* 11.5* |             |             |             | 11.0* 11.0* 65'11" |
| - 10 | Gantry        |             |             |             |             | 20.5* 20.5* | 18.1* 18.1* | 15.8* 15.8* |             |             |             |             |             |             | 14.1* 14.1* 53'10" |

Height Can be slewed through 360° In longitudinal position of undercarriage Max. reach \* Limited by hydr. capacity

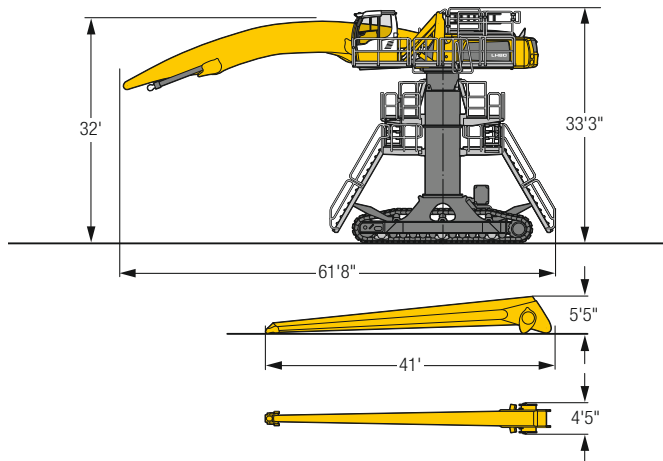
The lift capacities on the stick end without attachment are stated in lb x 1,000 and can be slewed through 360° on a firm, level supporting surface. Capacities are valid for 30" wide flat pads. Indicated loads based on the ISO 10567 standard and do not exceed 75% of tipping or 87% of hydraulic capacity. The lift capacity values indicated are attained at the corresponding operating temperature. This operating temperature is ensured by continuous movement of the boom. Weights of fitted attachments (grabs, load hooks, etc.) and load accommodation attachment are to be deducted from the lift capacity values. The lift capacity of the unit is limited by its stability, the lifting capability of the hydraulic elements, or the maximum permissible lifting capacity of the load hook.

# LH 80 C Gantry – Equipment AG24

## Port – Kinematic 2D



### Dimensions



### Operating weight and ground pressure

The operating weight includes the basic machine with hydr. cab elevation, angled boom 44°3', straight stick 39°4" and grab for loose material GMZ 80 / 5.23 yd<sup>3</sup>.

|                 |            |
|-----------------|------------|
| Weight          | 257,800 lb |
| Pad width       | 30"        |
| Ground pressure | on request |

|     |               | 20 ft       | 25 ft       | 30 ft       | 35 ft       | 40 ft       | 45 ft       | 50 ft       | 55 ft       | 60 ft       | 65 ft       | 70 ft       | 75 ft       | 80 ft       |                     |
|-----|---------------|-------------|-------------|-------------|-------------|-------------|-------------|-------------|-------------|-------------|-------------|-------------|-------------|-------------|---------------------|
|     |               |             |             |             |             |             |             |             |             |             |             |             |             |             |                     |
| ft  | Undercarriage |             |             |             |             |             |             |             |             |             |             |             |             |             | ft in               |
| 100 | Gantry        |             |             |             |             | 19,6* 19,6* |             |             |             |             |             |             |             |             | 17,6* 17,6* 42' 7"  |
| 95  | Gantry        |             |             |             |             |             | 19,8* 19,8* |             |             |             |             |             |             |             | 16,1* 16,1* 49' 8"  |
| 85  | Gantry        |             |             |             |             |             | 20,3* 20,3* | 18,9* 18,9* | 15,5* 15,5* |             |             |             |             |             | 15,2* 15,2* 55' 5"  |
| 80  | Gantry        |             |             |             |             |             | 20,4* 20,4* | 18,6* 18,6* | 17,4* 17,4* | 14,7* 14,7* |             |             |             |             | 14,5* 14,5* 60' 1"  |
| 75  | Gantry        |             |             |             |             |             |             | 18,4* 18,4* | 17,3* 17,3* | 16,3* 16,3* |             |             |             |             | 14,0* 14,0* 64' 1"  |
| 70  | Gantry        |             |             |             |             |             |             | 18,4* 18,4* | 17,2* 17,2* | 16,2* 16,2* | 15,3* 15,3* |             |             |             | 13,7* 13,7* 67' 6"  |
| 65  | Gantry        |             |             |             |             |             |             |             | 19,9* 19,9* | 18,4* 18,4* | 17,2* 17,2* | 16,2* 16,2* | 15,3* 15,3* | 14,0* 14,0* | 13,5* 13,5* 70' 5"  |
| 60  | Gantry        |             |             |             |             |             |             |             | 20,1* 20,1* | 18,6* 18,6* | 17,3* 17,3* | 16,2* 16,2* | 15,3* 15,3* | 14,5* 14,5* | 13,4* 13,4* 72' 10" |
| 55  | Gantry        |             |             |             |             |             |             |             | 20,4* 20,4* | 18,8* 18,8* | 17,5* 17,5* | 16,3* 16,3* | 15,4* 15,4* | 14,5* 14,5* | 13,4* 13,4* 74' 10" |
| 50  | Gantry        |             |             |             |             | 22,9* 22,9* | 20,9* 20,9* | 19,2* 19,2* | 17,7* 17,7* | 16,5* 16,5* | 15,5* 15,5* | 14,6* 14,6* | 13,8* 13,8* |             | 13,4* 13,4* 76' 5"  |
| 45  | Gantry        |             |             |             | 26,4* 26,4* | 23,6* 23,6* | 21,4* 21,4* | 19,5* 19,5* | 18,0* 18,0* | 16,7* 16,7* | 15,7* 15,7* | 14,7* 14,7* | 13,9* 13,9* |             | 13,5* 13,5* 77' 8"  |
| 40  | Gantry        |             |             | 31,5* 31,5* | 27,5* 27,5* | 24,4* 24,4* | 22,0* 22,0* | 20,0* 20,0* | 18,4* 18,4* | 17,0* 17,0* | 15,8* 15,8* | 14,8* 14,8* | 14,0* 14,0* |             | 13,4* 13,4* 78' 7"  |
| 35  | Gantry        | 49,2* 49,2* | 39,6* 39,6* | 33,2* 33,2* | 28,7* 28,7* | 25,3* 25,3* | 22,6* 22,6* | 20,5* 20,5* | 18,7* 18,7* | 17,3* 17,3* | 16,1* 16,1* | 15,0* 15,0* | 14,0* 14,0* |             | 13,3* 13,3* 79' 2"  |
| 30  | Gantry        | 53,5* 53,5* | 42,3* 42,3* | 35,0* 35,0* | 29,9* 29,9* | 26,2* 26,2* | 23,3* 23,3* | 21,0* 21,0* | 19,1* 19,1* | 17,6* 17,6* | 16,3* 16,3* | 15,1* 15,1* | 14,1* 14,1* |             | 13,2* 13,2* 79' 5"  |
| 25  | Gantry        | 53,9* 53,9* | 44,7* 44,7* | 36,7* 36,7* | 31,1* 31,1* | 27,0* 27,0* | 23,9* 23,9* | 21,5* 21,5* | 19,5* 19,5* | 17,8* 17,8* | 16,5* 16,5* | 15,2* 15,2* | 14,1* 14,1* |             | 13,1* 13,1* 79' 5"  |
| 20  | Gantry        | 27,5* 27,5* | 46,7* 46,7* | 38,1* 38,1* | 32,1* 32,1* | 27,8* 27,8* | 24,5* 24,5* | 21,9* 21,9* | 19,8* 19,8* | 18,1* 18,1* | 16,6* 16,6* | 15,3* 15,3* | 14,1* 14,1* |             | 13,0* 13,0* 79'     |
| 15  | Gantry        | 22,2* 22,2* | 39,9* 39,9* | 31,1* 31,1* | 32,9* 32,9* | 28,4* 28,4* | 25,0* 25,0* | 22,3* 22,3* | 20,1* 20,1* | 18,2* 18,2* | 16,7* 16,7* | 15,3* 15,3* | 13,9* 13,9* |             | 12,9* 12,9* 78' 4"  |
| 10  | Gantry        | 21,1* 21,1* | 33,4* 33,4* | 39,7* 39,7* | 33,4* 33,4* | 28,8* 28,8* | 25,3* 25,3* | 22,5* 22,5* | 20,2* 20,2* | 18,3* 18,3* | 16,6* 16,6* | 15,1* 15,1* | 13,6* 13,6* |             | 12,8* 12,8* 77' 4"  |
| 5   | Gantry        | 21,6* 21,6* | 31,3* 31,3* | 39,6* 39,6* | 33,5* 33,5* | 28,9* 28,9* | 25,3* 25,3* | 22,5* 22,5* | 20,1* 20,1* | 18,1* 18,1* | 16,4* 16,4* | 14,7* 14,7* | 12,9* 12,9* |             | 12,5* 12,5* 75' 11" |
| 0   | Gantry        | 22,8* 22,8* | 31,0* 31,0* | 38,8* 38,8* | 33,0* 33,0* | 28,6* 28,6* | 25,0* 25,0* | 22,2* 22,2* | 19,8* 19,8* | 17,7* 17,7* | 15,9* 15,9* | 14,0* 14,0* |             |             | 12,2* 12,2* 74' 1"  |
| -5  | Gantry        | 24,2* 24,2* | 31,6* 31,6* | 37,1* 37,1* | 31,8* 31,8* | 27,7* 27,7* | 24,3* 24,3* | 21,5* 21,5* | 19,1* 19,1* | 17,0* 17,0* | 14,9* 14,9* | 12,8* 12,8* |             |             | 11,8* 11,8* 72'     |
| -10 | Gantry        |             | 32,8* 32,8* | 34,5* 34,5* | 29,9* 29,9* | 26,1* 26,1* | 23,0* 23,0* | 20,3* 20,3* | 17,9* 17,9* | 15,7* 15,7* | 13,4* 13,4* |             |             |             | 12,3* 12,3* 67' 4"  |
| -15 | Gantry        |             |             |             | 27,0* 27,0* | 23,8* 23,8* | 20,9* 20,9* | 18,4* 18,4* | 16,0* 16,0* |             |             |             |             |             | 14,8* 14,8* 57' 5"  |

Height Can be slewed through 360° In longitudinal position of undercarriage Max. reach \* Limited by hydr. capacity

The lift capacities on the stick end without attachment are stated in lb x 1,000 and can be slewed through 360° on a firm, level supporting surface. Capacities are valid for 30" wide flat pads. Indicated loads based on the ISO 10567 standard and do not exceed 75% of tipping or 87% of hydraulic capacity. The lift capacity values indicated are attained at the corresponding operating temperature. This operating temperature is ensured by continuous movement of the boom. Weights of fitted attachments (grabs, load hooks, etc.) and load accommodation attachment are to be deducted from the lift capacity values. The lift capacity of the unit is limited by its stability, the lifting capability of the hydraulic elements, or the maximum permissible lifting capacity of the load hook.



# Liebherr ERC-System

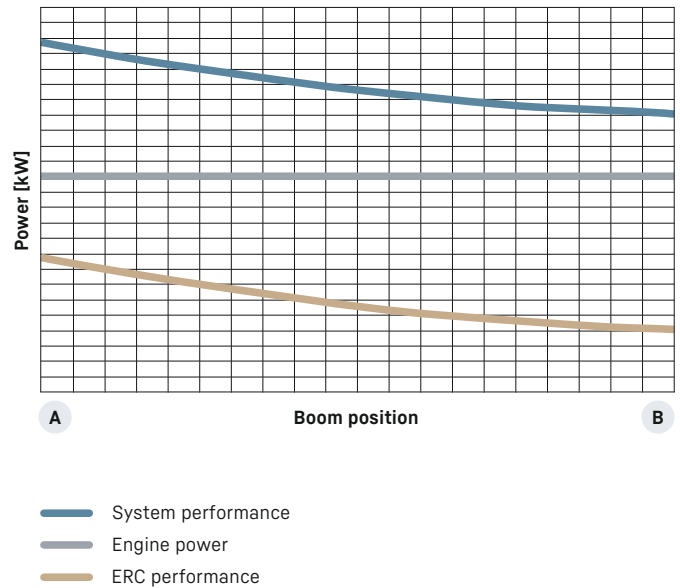
## More performance, less consumption

Lowering the equipment stores energy in the ERC-System. This stored energy is then made available to the machine to provide additional engine power. When the equipment is raised the stored energy is released and is reflected in powerful, homogeneous operating cycles. The result is a clear energy saving – and, at the same time, even greater performance.

## System performance

The energy recovery cylinder is a storage system which is independent of the electric motor or diesel engine. The system performance of material handling machines fitted with the ERC-System is composed of the installed engine power and the energy recovery cylinder. When the equipment is raised, energy from the ERC-System is supplied in addition to the power from the engine.

## ERC-System



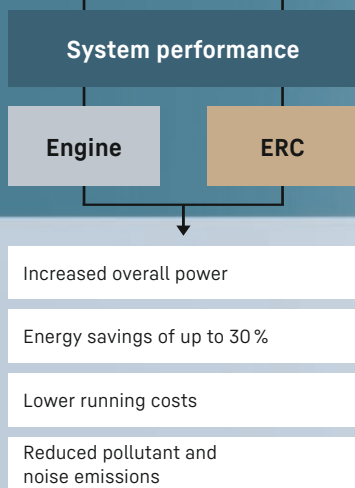
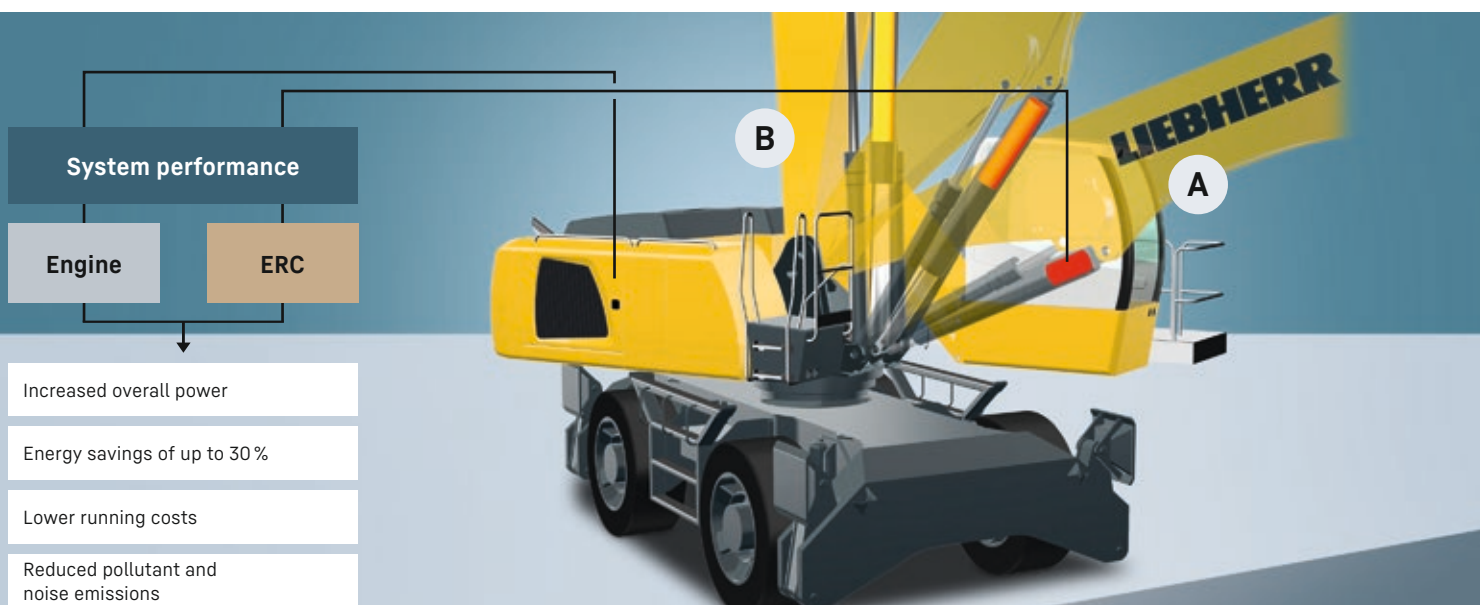
**B** 1. Equipment fitting raised / energy released



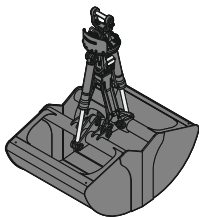
2. Lower equipment fitting / store energy  
4. Raise equipment fitting / release energy



**A** 3. Equipment fitting lowered / energy stored



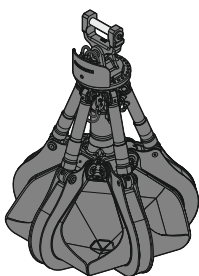
# Attachments



## Grab for loose material

Shells for loose material with cutting edge (without teeth)

| Grab model GMZ 50   |                 |          |       |       |       |       |       |       |       |       |       |       |       |       |
|---------------------|-----------------|----------|-------|-------|-------|-------|-------|-------|-------|-------|-------|-------|-------|-------|
| Width of shells     | ft in           | 4'7"     | 5'3"  | 5'11" |       |       |       |       |       |       |       |       |       |       |
| Capacity            | yd <sup>3</sup> | 4.58     | 5.23  | 5.88  |       |       |       |       |       |       |       |       |       |       |
| Weight              | lb              | 5,765    | 6,065 | 6,230 |       |       |       |       |       |       |       |       |       |       |
| Grab model GMZ 80   |                 |          |       |       |       |       |       |       |       |       |       |       |       |       |
| Shell specification |                 | Standard |       |       |       |       |       |       | Wide  |       |       |       |       |       |
| Width of shells     | ft in           | 4'3"     | 4'11" | 5'9"  | 6'7"  | 7'3"  | 8'6"  | 9'10" | 11'2" | 4'3"  | 4'11" | 5'7"  | 6'7"  | 7'3"  |
| Capacity            | yd <sup>3</sup> | 3.92     | 4.58  | 5.23  | 5.88  | 6.54  | 7.85  | 9.15  | 10.46 | 2.62  | 3.01  | 3.53  | 3.92  | 4.45  |
| Weight              | lb              | 5,535    | 5,785 | 6,120 | 6,435 | 7,175 | 7,695 | 8,200 | 8,720 | 5,095 | 5,290 | 5,590 | 5,885 | 6,380 |
| Grab model GMZ 120  |                 |          |       |       |       |       |       |       |       |       |       |       |       |       |
| Width of shells     | ft in           | 5'3"     | 5'11" | 6'7"  | 7'3"  | 7'10" | 9'2"  | 10'6" |       |       |       |       |       |       |
| Capacity            | yd <sup>3</sup> | 5.23     | 5.88  | 6.54  | 7.19  | 7.85  | 9.15  | 10.46 |       |       |       |       |       |       |
| Weight              | lb              | 6,625    | 6,925 | 7,230 | 8,005 | 8,320 | 8,905 | 9,545 |       |       |       |       |       |       |



## Multi-tine grab

closed, heart-shaped

| Grab model GMM 80-5 (5 tines)  |                 |       |       |       |       |
|--------------------------------|-----------------|-------|-------|-------|-------|
| Capacity                       | yd <sup>3</sup> | 1.18  | 1.44  | 1.83  | 2.22  |
| Weight                         | lb              | 5,235 | 5,380 | 5,690 | 6,020 |
| Grab model GMM 120-5 (5 tines) |                 |       |       |       |       |
| Capacity                       | yd <sup>3</sup> | 2.22  | 2.62  | 3.27  | 3.92  |
| Weight                         | lb              | 6,550 | 6,855 | 7,200 | 8,090 |



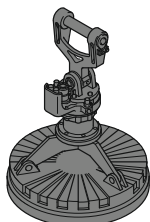
## Wood grab

| Grab model GMH 50 – round overlapping (horizontal cylinders) |                 |       |       |       |       |       |       |
|--|-----------------|-------|-------|-------|-------|-------|-------|
| Size   | yd <sup>2</sup> | 2.63  | 2.99  | 2.99  | 3.35  | 3.83  | 4.31  |
| Cutting width  | ft in           | 3'3"  | 2'10" | 3'3"  | 3'3"  | 3'3"  | 3'3"  |
| Height of grab, closed                                       | ft in           | 7'7"  | 7'11" | 7'11" | 8'3"  | 8'8"  | 9'3"  |
| Weight   | lb              | 4,705 | 4,640 | 4,805 | 4,980 | 5,115 | 5,235 |
| Grab model GMH 80 – round overlapping (vertical cylinders)   |                 |       |       |       |       |       |       |
| Size   | yd <sup>2</sup> | 1.55  | 1.91  | 2.27  | 2.63  | 2.99  |       |
| Cutting width  | ft in           | 2'10" | 2'10" | 2'10" | 2'10" | 2'10" |       |
| Height of grab, closed                                       | ft in           | 9'2"  | 9'6"  | 9'9"  | 10'1" | 10'4" |       |
| Weight   | lb              | 4,750 | 4,885 | 4,980 | 5,060 | 5,150 |       |
| Grab model GMH 120 – round overlapping (vertical cylinders)  |                 |       |       |       |       |       |       |
| Size   | yd <sup>2</sup> | 3.35  | 3.83  | 3.35  |       |       |       |
| Cutting width  | ft in           | 2'10" | 2'10" | 2'10" |       |       |       |
| Height of grab, closed                                       | ft in           | 11'9" | 12'1" | 12'4" |       |       |       |
| Weight   | lb              | 6,010 | 6,065 | 6,150 |       |       |       |



## Load hook

|                        |    |        |
|------------------------|----|--------|
| Max. load              | lb | 55,115 |
| Height with suspension | ft | 4'     |
| Weight                 | lb | 562    |

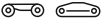


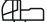
## Magnet devices / lifting magnets


| Generator                     | kW    | 20     | 30     |
|-------------------------------|-------|--------|--------|
| Electromagnet with suspension |       |        |        |
| Power                         | kW    | 11.7   | 17.8   |
| Diameter of magnet            | ft in | 4'11"  | 5'7"   |
| Weight                        | lb    | 5,290* | 7,275* |


\* only magnet plate


# Equipment

|  | 80 M | 80 C | 80 M HR | 80 C HR | 80 C Gantry |
|--|------|------|---------|---------|-------------|
|  <b>Undercarriage</b> |      |      |         |         |             |
| Track pads, variants   |      | +    |         | +       | +           |
| Individual control outriggers  | +    |      | •       |         |             |
| Three-piece chain guide  |      | •    |         | •       | •           |
| Shuttle axle lock, automatic   | •    |      | •       |         |             |
| Outrigger monitoring system  | +    |      | +       |         |             |
| Tires, variants  | +    |      | +       |         |             |
| Trailing cable <sup>2)</sup>   | •    | •    | •       | •       | •           |
| Protection for piston rods, outriggers   | +    |      | +       |         |             |
| Two storage compartments <sup>1)</sup>   | •    |      |         |         |             |
| One storage compartment <sup>2)</sup>  | •    |      |         |         |             |
| Cable reel system <sup>2)</sup>  | +    | +3)  | +       | +       | +           |

|   | 80 M | 80 C | 80 M HR | 80 C HR | 80 C Gantry |
|---|------|------|---------|---------|-------------|
|  <b>Upper-carriage</b> |      |      |         |         |             |
| Upper-carriage right side light, 1 piece, LED   | •    | •    | •       | •       | •           |
| Upper-carriage rear light, 2 pieces, LED  | +    | +    |         |         |             |
| Upper-carriage underneath rear light, 1 piece, LED  |      |      | +       | +       | +           |
| Refuelling system with filling pump <sup>1)</sup>   | +    | +    | +       | +       | +           |
| Railing on upper-carriage   | +    | +    | •       | •       | •           |
| Generator   | +    | +    | +       | +       | +           |
| Main battery switch for electrical system   | •    | •    | •       | •       | •           |
| Amber beacon, at upper-carriage, LED double flash   | +    | +    | +       | +       | +           |
| Protection for headlights   | +    | +    |         |         |             |
| Protection for rear lights  | +    | +    |         |         |             |
| Tool equipment, extended  | •    | •    | •       | •       | •           |

|   | 80 M | 80 C | 80 M HR | 80 C HR | 80 C Gantry |
|---|------|------|---------|---------|-------------|
|  <b>Hydraulic system</b> |      |      |         |         |             |
| Electronic pump regulation  | •    | •    | •       | •       | •           |
| Liebherr hydraulic oil from -4°F to +104°F  | •    | •    | •       | •       | •           |
| Liebherr hydraulic oil, biologically degradable   | +    | +    | +       | +       | +           |
| Liebherr hydraulic oil, specially for warm or cold regions  | +    | +    | +       | +       | +           |
| Magnetic rod in hydraulic tank  | •    | •    | •       | •       | •           |
| Bypass filter   | +    | +    | +       | +       | +           |
| Preheating hydraulic oil  | +    | +    | +       | +       | +           |

|   | 80 M | 80 C | 80 M HR | 80 C HR | 80 C Gantry |
|---|------|------|---------|---------|-------------|
|  <b>Engine</b> |      |      |         |         |             |
| Fuel anti-theft device <sup>1)</sup>  | +    | +    | +       | +       | +           |
| Air pre-filter with dust discharge <sup>1)</sup>  | +    | +    | +       | +       | +           |
| Automatic engine shut-down (time adjustable)  | +    | +    | +       | +       | +           |
| Preheating fuel <sup>1)</sup>   | +    | +    | +       | +       | +           |
| Preheating coolant <sup>1)</sup>  | +    | +    | +       | +       | +           |
| Preheating engine oil <sup>*1)</sup>  | +    | +    | +       | +       | +           |

|   | 80 M | 80 C | 80 M HR | 80 C HR | 80 C Gantry |
|---|------|------|---------|---------|-------------|
|  <b>Cooling system</b> |      |      |         |         |             |
| Reversible fan drive  | +    | +    | +       | +       | +           |
| Protective grid in front of cooler intake   | •    | •    | •       | •       | •           |



## Cab

|  | 80 M | 80 C | 80 M HR | 80 C HR | 80 C Gantry |
|--|------|------|---------|---------|-------------|
| Support assistant  | +    |      | +       |         |             |
| Stabilizer, control lever, left console  | +    |      | +       |         |             |
| Stabilizer, proportional control on left joystick                                      | ●    |      | ●       |         |             |
| Cab lights rear, LED   | +    | +    | +       | +       | +           |
| Cab lights front, LED  | +    | +    | +       | +       | +           |
| Cab lights front, LED (under rain cover)   | ●    | ●    | ●       | ●       | ●           |
| Armrest adjustable   | ●    | ●    | ●       | ●       | ●           |
| Circular bubble level  | +    | +    | ●       | ●       | ●           |
| Slewing gear brake Comfort, button on the left or right joystick                       | +    | +    | +       | +       | +           |
| Driver profile, personalized (max. 5 drivers)  | +    | +    | +       | +       | +           |
| Operator's seat Comfort  | ●    | ●    | ●       | ●       | ●           |
| Operator's seat Premium  | +    | +    | +       | +       | +           |
| Driving alarm (acoustic signal is emitted during travel, can be switched ON/OFF)       | +    | +    | +       | +       | +           |
| Fire extinguisher  | +    | +    | +       | +       | +           |
| Footrest   | +    | +    | +       | +       | +           |
| Horn, button on left joystick  | ●    | ●    | ●       | ●       | ●           |
| Joystick steering  | ●    |      | ●       |         |             |
| Joystick and wheel steering (slim version)   | +    |      | +       |         |             |
| Cab elevation, hydraulic (LHC)   | ●    | ●    | ●       | ●       | ●           |
| Cab elevation, hydraulic with double parallelogram (LHC-D)                             |      |      | +       | +       | +           |
| Cab elevation, rigid (LFC)   | +    | +    |         |         |             |
| Automatic air conditioning   | ●    | ●    | ●       | ●       | ●           |
| Wheel steering (slim version)  | +    |      | +       |         |             |
| LiDAT, vehicle fleet management  | ●    | ●    | ●       | ●       | ●           |
| Engine shut-down (emergency stop) cab <sup>2)</sup>                                    | ●    | ●    | ●       | ●       | ●           |
| Proportional control   | ●    | ●    | ●       | ●       | ●           |
| Radio Comfort, control via display with handsfree set                                  | +    | +    | +       | +       | +           |
| Preparation for radio installation   | ●    | ●    | ●       | ●       | ●           |
| Back-up alarm (acoustic signal is emitted traveling backward, can not be switched off) | +    |      | +       |         |             |
| Amber beacon, on cab, LED double flash   | +    | +    | +       | +       | +           |
| Windows made from impact-resistant laminated safety glass                              | +    | +    | ●       | ●       | ●           |
| Windscreen wiper, roof   | +    | +    | +       | +       | +           |
| Windshield wiper, entire windshield  | ●    | ●    | ●       | ●       | ●           |
| FOPS top guard   | +    | +    | +       | +       | +           |
| FGPS front guard, tiltable   | +    | +    | +       | +       | +           |
| Sun visor  | +    | +    | +       | +       | +           |
| Stationary air-conditioning <sup>2)</sup>  | ●    | ●    | ●       | ●       | ●           |
| Left control console, folding  | ●    | ●    | ●       | ●       | ●           |



## Equipment

|  | 80 M | 80 C | 80 M HR | 80 C HR | 80 C Gantry |
|--|------|------|---------|---------|-------------|
| Boom lights, 2 pieces, LED   | ●    | ●    | ●       | ●       | ●           |
| Stick lights, 2 pieces, LED  | ●    | ●    | ●       | ●       | ●           |
| Boom shutoff (retract / extend), electronically                    | +    | +    | ●       | ●       | ●           |
| Equipment with electro-hydraulic end position control              | ●    | ●    | ●       | ●       | ●           |
| AutoLift   | +    | +    | +       | +       | +           |
| Pressure warning mechanism hoist cylinder                          | ●    | ●    | ●       | ●       | ●           |
| ERC system   | ●    | ●    | ●       | ●       | ●           |
| Filter system for attachment                                       | +    | +    | +       | +       | +           |
| Electronic lift limitation   | +    | +    | +       | +       | +           |
| Boom cylinder cushioning   | ●    | ●    | ●       | ●       | ●           |
| Stick camera (with separate monitor), bottom side, with protection | +    | +    | +       | +       | +           |
| Load torque limitation   | +    | +    | +       | +       | +           |
| Liebherr multi coupling system                                     | +    | +    | +       | +       | +           |
| Pipe fracture safety valves hoist cylinders                        | ●    | ●    | ●       | ●       | ●           |
| Pipe fracture safety valves stick cylinders                        | ●    | ●    | ●       | ●       | ●           |
| Quick coupling system MH 110B                                      | +    | +    | +       | +       | +           |
| Protection for piston rod, energy recovering cylinder              | +    | +    | +       | +       | +           |
| Protection for piston rods, hoist cylinder                         | +    | +    | +       | +       | +           |
| Stick shutoff (retract), electronically                            | ●    | ●    | ●       | ●       | ●           |
| Stick shutoff (retract / extend), electronically                   | +    | +    | +       | +       | +           |
| Retract stick without pressure                                     | ●    | ●    | ●       | ●       | ●           |
| Sticks with quick coupling   | +    | +    | +       | +       | +           |
| Overload warning device  | +    | +    | +       | +       | +           |



## Complete machine

|   | 80 M | 80 C | 80 M HR | 80 C HR | 80 C Gantry |
|---|------|------|---------|---------|-------------|
| <b>Lubrication</b>  |      |      |         |         |             |
| Lubrication undercarriage, manually - decentralized (grease points)       | ●    |      |         |         |             |
| Lubrication undercarriage, manually - centralized (one grease point)      | +    |      | ●       |         |             |
| Central lubrication system for uppercarriage and equipment, automatically | ●    | ●    | ●       | ●       | ●           |
| Central lubrication system for undercarriage, automatically               | +    |      | +       |         |             |
| Centralized lubrication extended for attachment                           | +    | +    | +       | +       | +           |
| <b>Special coating</b>  |      |      |         |         |             |
| Special coating, variants   | +    | +    | +       | +       | +           |
| <b>Monitoring</b>   |      |      |         |         |             |
| Rear view monitoring with camera  | ●    | ●    | ●       | ●       | ●           |
| Side view monitoring with camera  | ●    | ●    | ●       | ●       | ●           |

● = Standard, + = Option, +<sup>3)</sup> = on request

\* = country-dependent, <sup>1)</sup> not with electric drive, <sup>2)</sup> only with electric drive

Options and / or special equipment, supplied by vendors other than Liebherr, are only to be installed with the knowledge and approval of Liebherr in order to retain warranty.

# The Liebherr Group



## Global and independent: more than 70 years of success

Liebherr was founded in 1949. With the development of the world's first mobile tower crane, Hans Liebherr laid the foundations of a successful family business which today comprises more than 140 companies on all continent and employs nearly 51,000 people. The parent company of the Group is Liebherr-International AG in Bulle (Switzerland), whose associates are exclusively members of the Liebherr family.

## Technology leadership and pioneering spirit

Liebherr regards itself as a pioneer. This spirit has enabled the company to make a decisive contribution to the technological history of many industries. Today, employees around the world still share the courage of the company founder to take new paths. They are all united by a passion for technology and fascinating products and the determination to perform outstanding work for their customers.

## Widely diversified product portfolio

Not only is Liebherr one of the biggest construction equipment manufacturers in the world, it also provides high-quality, user-oriented products and services in a wide range of other areas. The product portfolio includes the segments earthmoving, material handling technology, deep foundation machines, mining, mobile and crawler cranes, tower cranes, concrete technology, maritime cranes, aerospace and transportation systems, gear technology and automation systems, refrigeration and freezing, components and hotels.

## Customized solutions and maximum customer benefit

Liebherr solutions are characterized by maximum precision, outstanding implementation and exceptional longevity. Its mastery of key technologies enables the company to offer its customers customized solutions. For Liebherr, customer focus does not end with the product; it also encompasses a wide range of services that make a real difference.

[www.liebherr.us](http://www.liebherr.us)

### **WARNING**

Breathing diesel engine exhaust exposes you to chemicals known to the State of California to cause cancer and birth defects or other reproductive harm.

- Always start and operate the engine in a well-ventilated area.
- If in an enclosed area, vent the exhaust to the outside.
- Do not modify or tamper with exhaust system.
- Do not idle the engine except as necessary.

For more information go to [www.P65warnings.ca.gov/diesel](http://www.P65warnings.ca.gov/diesel).

### **WARNING**

This product can expose you to chemicals including lead and lead compounds, which are known to the State of California to cause cancer and birth defects or other reproductive harm.

For more information go to [www.P65warnings.ca.gov](http://www.P65warnings.ca.gov).

## Liebherr USA, Co.

Construction Equipment Division • 4800 Chestnut Avenue • Newport News, VA 23607, USA • Phone +1 (757) 240 4250  
[construction.usa@liebherr.com](mailto:construction.usa@liebherr.com) • [www.liebherr.us](http://www.liebherr.us) • [www.facebook.com/LiebherrConstruction](https://www.facebook.com/LiebherrConstruction)