
R 914 Compact Litronic

LIEBHERR

Crawler Excavator



Generation
6

Engine
121 HP / 90 kW
Tier 4 Final

Operating weight
16,400 kg / 36,160 lb

Bucket capacity
0.32 – 0.80 m³ /
0.42 – 1.05 yd³

Experience the progress R 914 Compact

Maintenance

- Servicing concept, with service points accessible from ground level
- Engine oil level and filling nozzle accessible from ground level
- Standard shut-off valve on hydraulic tank outlet

Compactness

- Short tail swing radius of 1,55 m / 5' 1" for increased safety and flexibility on work sites
- The perfect machine for narrow sites – ideal for urban applications and on motorways

Safety

- Panoramic visibility with no obstructions and camera on the rear and the right side equipment for enhanced safety
- Lifiable console for easy and safe access to cab
- ROPS-certified cab structure: rollover protection
- Emergency exit via the rear cab window
- Right window and windshield in laminated and tinted glass





Equipment

- Large choice of tools and teeth to suit all applications
- Longer lifespan of components and higher productivity thanks to automatic centralised lubrication system
- Safety check valves for hoist and stick cylinders
- Available height limitation, adjustable from the touchscreen

Engine

- US EPA Tier 4 Final engine with SCR system and diesel oxidation catalyst
- Automatic idle-stop

Comfort

- Spacious, air-conditioned work space
- Airsprung seat with vertical and horizontal suspension
- Easy-to-use high resolution 7" colour touchscreen
- 76 mm / 3" orange seat belt

Undercarriage

- Robust, reliable X-frame undercarriage, easy to secure thanks to its integrated eyelets
- Easy maintenance
- Several levelling blades available
- Optional rubber track pads for urban application
- Possibility to anchor the machine with the blade
- Maintenance-free travel gear and track rollers with lifetime lubrication

Technical Data



Engine

Rating	
per SAE J1349	121 HP (90 kW) at 1,800 rpm
per ISO 9249	122 HP (90 kW) at 1,800 rpm
Model	Deutz TCD3.6L4
Type	4 cylinder in-line
Bore	98 mm / 3.9 in
Stroke	120 mm / 4.7 in
Displacement	3.6 l / 220 in³
Engine operation	4-stroke diesel Common-Rail injection system Turbo-charged and after-cooler Reduced emissions
Exhaust gas treatment	Tier 4 Final DOC + SCR Deutz
Air cleaner	Dry-type air cleaner with pre-cleaner, primary and safety elements
Fuel tank	175 l / 46 gal
Urea tank	20 l / 5 gal
Electrical system	
Voltage	24 V
Batteries	2 x 135 Ah / 12 V
Alternator	Three-phase current 28 V / 80 A
Engine idling	Sensor controlled



Cooling system

Engine	Water-cooled Compact cooling system consisting cooling unit for water, hydraulic oil and charge air with stepless thermostatically controlled fan, fans for radiator cleaning can be completely folded away
---------------	--



Hydraulic controls

Power distribution	Via control valves with integrated safety valves, simultaneous and independent actuation of undercarriage, swing drive and equipment
Servo circuit	
Equipment and swing	With hydraulic pilot control and proportional joystick levers
Travel	Electro-proportional via foot pedal
Additional functions	Via switch or electro-proportional foot pedals
Proportional control	Proportionally acting transmitters on the joysticks for additional hydraulic functions



Hydraulic system

Hydraulic pump	
For equipment and travel drive	Liebherr axial piston variable displacement pump
Max. flow	300 l/min. / 79 gpm
Max. pressure	350 bar / 5,076 psi
Hydraulic pump regulation and control	Liebherr-Synchron-Comfort-system (LSC) with electronic engine speed sensing regulation, pressure and flow compensation, torque controlled swing drive priority
Hydraulic tank	100 l / 26 gal
Hydraulic system	max. 230 l / max. 61 gal
Hydraulic oil filter	1 main return filter with integrated partial micro filtration (5 µm / 2,500 mesh)
MODE selection	Adjustment of engine and hydraulic performance via a mode pre-selector to match application, e.g. for especially economical and environmentally friendly operation or for maximum digging performance and heavy-duty jobs
S (Sensitive)	Mode for precision work and lifting through very sensitive movements
E (Eco)	Mode for especially economical and environmentally friendly operation
P (Power)	Mode for high performance with low fuel consumption
Engine speed and performance setting	Stepless adjustment of engine output and hydraulic power via engine speed
Option	Tool Control: 20 pre-adjustable pump flows and pressures for add-on attachments



Swing drive

Drive	Liebherr axial piston motor with integrated brake valve and torque control
Swing ring	Liebherr, sealed race ball bearing swing ring, internal teeth
Swing speed	0 - 10.0 rpm stepless
Swing torque	51 kNm / 37,620 lbf ft
Holding brake	Wet multi-disc (spring applied, pressure released)



Cab

Cab	ROPS safety cab structure (roll-over protection system) with windscreen, totally or partially retractable (only upper part), under cab roof, work headlights integrated in the ceiling, a door with a sliding window (can be opened on both sides), large storing box and several stowing possibilities, shock-absorbing suspension, sound damping insulating, tinted laminated safety glass, separate window shades for the sunroof window and windscreen
Operator's seat Standard	Air cushioned operator's seat with 3D-adjustable armrests, headrest, lap belt, seat heater, manual weight adjustment, adjustable seat cushion inclination and length and mechanical lumbar vertebrae support
Operator's seat Comfort (Option)	In addition to operator's seat standard: lockable horizontal suspension, automatic weight adjustment, adjustable suspension stiffness, pneumatic lumbar vertebrae support and passive seat climatisation with active coal
Operator's seat Premium (Option)	In addition to operator's seat comfort: active electronic weight adjustment (automatic readjustment), pneumatic low frequency suspension and active seat climatisation with active coal and ventilator
Arm consoles	Oscillating consoles with seat, tiltable console left
Operation and displays	Large high-resolution operating unit, intuitive, color display with touchscreen, video-compatible, numerous setting, control and monitoring options, e.g. air conditioning control, fuel consumption, machine and attachment parameters
Air-conditioning	Automatic air-conditioning, recirculated air function, fast de-icing and demisting at the press of a button, air vents can be operated via a menu. Recirculated air and fresh air filters can be easily replaced and are accessible from the ground level. Heating-cooling unit, designed for extreme outside temperatures, sensors for solar radiation
Noise emission	
ISO 6396	70 dB(A) = L _{PA} (inside cab)
2000/14/EC	100 dB(A) = L _{WA} (surround noise)



Undercarriage

Drive	Liebherr compact planetary reduction gear with Liebherr axial piston motor per side of undercarriage
Transmission	Liebherr compact planetary reduction gear
Maximum travel speed	3.1 km/h / 1.9 mph low range 6.8 km/h / 4.2 mph high range
Drawbar pull on crawler	154 kN / 34,620 lbf
Track components	B4, maintenance-free
Track rollers / Carrier rollers	8 / 2
Tracks	Sealed and greased
Track pads	Triple grouser
Holding brake	Wet multi-disc (spring applied, pressure released)
Brake valves	Integrated into travel motor
Lashing eyes	Integrated



Equipment

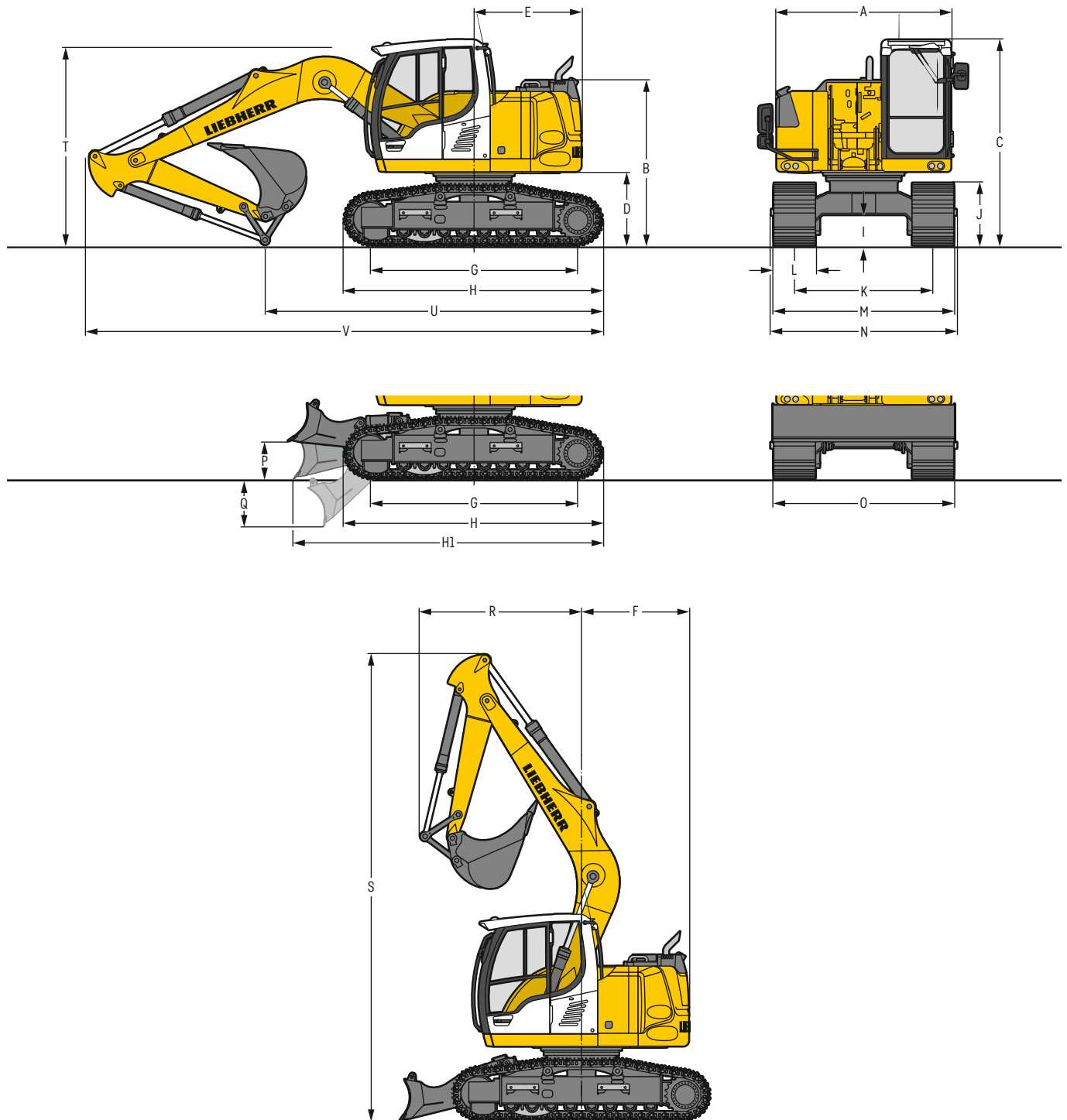
Type	High-strength steel plates at highly-stressed points for the toughest requirements. Complex and stable mountings of equipment and cylinders
Hydraulic cylinders	Liebherr cylinders with seal and guidance systems
Bearings	Sealed, low maintenance



Complete machine

Lubrication	Liebherr central lubrication system for uppercarriage and equipment, automatically
--------------------	--

Dimensions



		S	mm / ft in	S with blade	mm / ft in
A	Uppercarriage width		2,525 / 8' 3"		2,525 / 8' 3"
B	Uppercarriage height		2,395 / 7'10"		2,395 / 7'10"
C	Cab height		2,980 / 9' 9"		2,980 / 9' 9"
D	Counterweight ground clearance		1,050 / 3' 5"		1,050 / 3' 5"
E	Rear-end length		1,550 / 5' 1"		1,550 / 5' 1"
F	Tail swing radius		1,550 / 5' 1"		1,550 / 5' 1"
G	Wheelbase		3,000 / 9'10"		3,000 / 9'10"
H	Undercarriage length		3,730 / 12' 3"		3,730 / 12' 3"
H1	Undercarriage length with blade		-		4,555 / 14'11"
I	Undercarriage ground clearance		450 / 1' 6"		450 / 1' 6"
J	Track height		905 / 3'		905 / 3'
K	Track gauge		2,000 / 6' 7"		2,000 / 6' 7"
L	Track pad width		500 / 20" 600 / 24" 700 / 28"		500 / 20" 600 / 24" 700 / 28"
M	Width over tracks		2,500/8' 2" 2,600/8' 6" 2,700 / 8'10"		2,500/8' 2" 2,600/8' 6" 2,700 / 8'10"
N	Width over steps		2,480/8' 2" 2,480/8' 2" 2,680* / 8'10**		2,480/8' 2" 2,480/8' 2" 2,680* / 8'10**
O	Blade width		-		2,500/8' 2" 2,600/8' 6" 2,700 / 8'10"
P	Max. blade height		-		550 / 1'10"
Q	Max. blade depth		-		690 / 2' 3"

* width with removable steps

		Stick length m / ft in	Mono boom 4.60 m / 15'1" direct mounting mm / ft in
R	Front swing radius	2.05 / 6'9"	2,350 / 7' 9"
		2.25 / 7'5"	2,150 / 7' 1"
		2.45 / 8'	2,050 / 6' 9"
		2.65 / 8'8"	2,050 / 6' 9"
S	Height with boom up		6,800 / 22' 4"
		2.05 / 6'9"	2,900 / 9' 6"
		2.25 / 7'5"	2,700 / 8'10"
		2.45 / 8'	2,700 / 8'10"
T	Boom height	2.65 / 8'8"	2,750 / 9'
		2.05 / 6'9"	4,900 / 16' 1"
		2.25 / 7'5"	4,400 / 14' 5"
		2.45 / 8'	4,200 / 13' 9"
U	Length on ground	2.65 / 8'8"	4,000 / 13' 1"
		2.05 / 6'9"	8,400 / 27' 7"
		2.25 / 7'5"	8,400 / 27' 7"
		2.45 / 8'	8,400 / 27' 7"
V	Overall length	2.65 / 8'8"	8,400 / 27' 7"
		2.05 / 6'9"	0.50 m ³ / 0.65 yd ³
		2.25 / 7'5"	
		2.45 / 8'	
	Bucket		

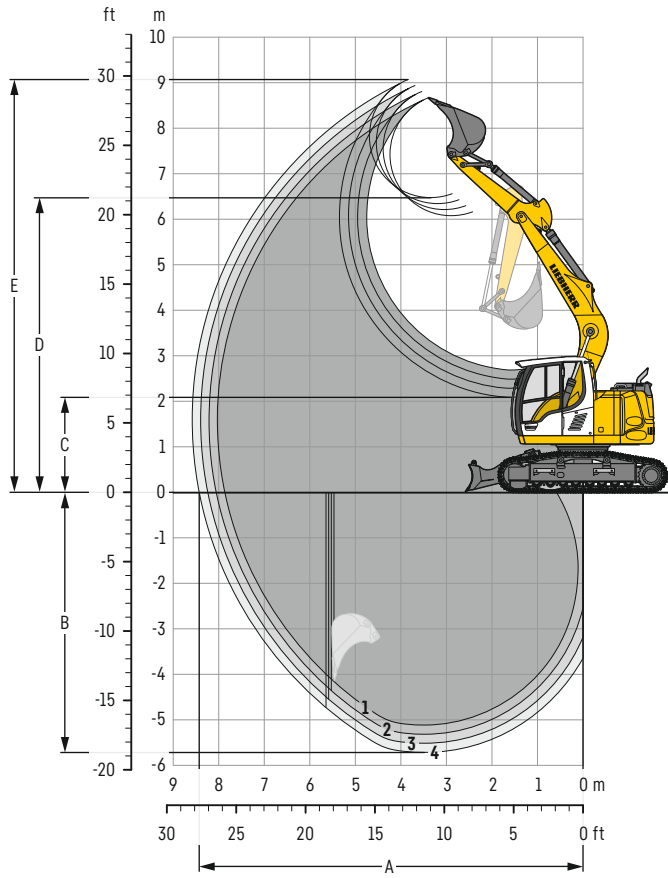
Transport Dimensions

removable elements disassembled

	Stick m / ft in	Mono boom 4.60 m / 15'1" mm / ft in
Pad width		500 / 20" 600 / 24" 750 / 30"
Transport width		2,525 / 8' 3" 2,600 / 8' 6" 2,700 / 8'10"
Transport length	2.05 / 6'9"	7,450 / 24' 5"
	2.25 / 7'5"	7,450 / 24' 5"
	2.45 / 8'	7,450 / 24' 5"
	2.65 / 8'8"	7,450 / 24' 5"
Transport height	2.05 / 6'9"	2,980 / 9' 9"
	2.25 / 7'5"	2,980 / 9' 9"
	2.45 / 8'	2,980 / 9' 9"
	2.65 / 8'8"	2,980 / 9' 9"
Bucket		0.50 m ³ / 0.65 yd ³

Backhoe bucket

with mono boom 4.60 m / 15'1" and counterweight 2.8 t / 6,170 lb



Digging envelope

without quick coupler	1	2	3	4
Stick length	m / ft in 2.05 / 6' 9"	2.25 / 7' 5"	2.45 / 8'	2.65 / 8' 8"
A Max. reach at ground level	m / ft in 7.87 / 25'10"	8.06 / 26' 5"	8.24 / 27'	8.43 / 27' 8"
B Max. digging depth	m / ft in 5.12 / 16'10"	5.32 / 17' 5"	5.52 / 18' 1"	5.72 / 18' 9"
C Min. dumping height	m / ft in 2.68 / 8'10"	2.48 / 8' 2"	2.28 / 7' 6"	2.08 / 6'10"
D Max. dumping height	m / ft in 6.08 / 19'11"	6.21 / 20' 4"	6.34 / 20'10"	6.48 / 21' 3"
E Max. cutting height	m / ft in 8.67 / 28' 5"	8.80 / 28'10"	8.93 / 29' 4"	9.07 / 29' 9"

Forces

without quick coupler	1	2	3	4
Stick digging force (ISO 6015)	kN / lbf 70 / 15,740	66 / 14,840	62 / 13,940	59 / 13,260
Bucket digging force (ISO 6015)	kN / lbf 89 / 20,010	89 / 20,010	89 / 20,010	89 / 20,010
Stick digging force (SAE J1179)	kN / lbf 68 / 15,290	64 / 14,390	60 / 13,490	57 / 12,810
Bucket digging force (SAE J1179)	kN / lbf 80 / 17,990	80 / 17,990	80 / 17,990	80 / 17,990

Operating Weight and Ground Pressure

The operating weight includes the basic machine with counterweight 2.8 t / 6,170 lb, mono boom 4.60 m / 15'1", stick 2.25 m / 7'5" and bucket 0.50 m³ / 0.65 yd³ (320 kg / 710 lb).

Undercarriage	S			
Pad width	mm / in 500 / 20"	600 / 24"	700 / 28"	900 / 35"
Weight	kg / lb 14,750 / 32,520	14,950 / 32,960	15,200 / 33,510	15,600 / 34,390
Ground pressure	kg/cm ² / psi 0.46 / 6.5	0.39 / 5.5	0.34 / 4.8	0.27 / 3.8

Undercarriage	S with blade			
Pad width	mm / in 500 / 20"	600 / 24"	700 / 28"	900 / 35"
Weight	kg / lb 15,950 / 35,160	16,150 / 35,610	16,400 / 36,160	16,800 / 37,040
Ground pressure	kg/cm ² / psi 0.49 / 7.0	0.42 / 6.0	0.36 / 5.1	0.29 / 4.1

Buckets Machine stability per ISO 10567* (75% of tipping capacity)

Cutting width	Capacity ISO 7461	Weight ³⁾	Weight ⁴⁾	S-Undercarriage (with track pads 600 mm/24")								S-Undercarriage with blade (with track pads 600 mm/24")							
				Stick length (m / ft in)								Stick length (m / ft in)							
				without quick coupler				with quick coupler				without quick coupler				with quick coupler			
				2.05 6'9"	2.25 7'5"	2.45 8'	2.65 8'8"	2.05 6'9"	2.25 7'5"	2.45 8'	2.65 8'8"	2.05 6'9"	2.25 7'5"	2.45 8'	2.65 8'8"	2.05 6'9"	2.25 7'5"	2.45 8'	2.65 8'8"
500	0.32	230	250	▲	▲	▲	▲	▲	▲	▲	▲	▲	▲	▲	▲	▲	▲	▲	▲
1'8"	0.42	510	550	▲	▲	▲	▲	▲	▲	▲	▲	▲	▲	▲	▲	▲	▲	▲	▲
550	0.29	250	260	▲	▲	▲	▲	▲	▲	▲	▲	▲	▲	▲	▲	▲	▲	▲	▲
1'10"	0.38	550	570	▲	▲	▲	▲	▲	▲	▲	▲	▲	▲	▲	▲	▲	▲	▲	▲
650	0.36	270	290	▲	▲	▲	▲	▲	▲	▲	▲	▲	▲	▲	▲	▲	▲	▲	▲
2'2"	0.47	600	640	▲	▲	▲	▲	▲	▲	▲	▲	▲	▲	▲	▲	▲	▲	▲	▲
850	0.50	320	340	▲	▲	▲	▲	▲	▲	▲	▲	▲	▲	▲	▲	▲	▲	▲	▲
2'9"	0.65	710	750	▲	▲	▲	▲	▲	▲	▲	▲	▲	▲	▲	▲	▲	▲	▲	▲
1,050	0.65	360	380	▲	▲	▲	▲	▲	▲	▲	■	▲	▲	▲	▲	▲	▲	▲	▲
3'5"	0.85	790	840	▲	▲	▲	▲	▲	▲	▲	■	▲	▲	▲	▲	▲	▲	▲	▲
1,250	0.80	420	430	■	■	▲	■	■	▲	▲	■	▲	▲	▲	■	▲	▲	■	■
4'1"	1.05	930	950	■	■	▲	■	■	▲	▲	■	▲	▲	▲	■	▲	▲	■	■
500	0.32	260	280	▲	▲	▲	▲	▲	▲	▲	▲	▲	▲	▲	▲	▲	▲	▲	▲
1'8"	0.42	570	620	▲	▲	▲	▲	▲	▲	▲	▲	▲	▲	▲	▲	▲	▲	▲	▲
550	0.29	280	290	▲	▲	▲	▲	▲	▲	▲	▲	▲	▲	▲	▲	▲	▲	▲	▲
1'10"	0.38	620	640	▲	▲	▲	▲	▲	▲	▲	▲	▲	▲	▲	▲	▲	▲	▲	▲
650	0.36	300	320	▲	▲	▲	▲	▲	▲	▲	▲	▲	▲	▲	▲	▲	▲	▲	▲
2'2"	0.47	660	710	▲	▲	▲	▲	▲	▲	▲	▲	▲	▲	▲	▲	▲	▲	▲	▲
850	0.50	360	380	▲	▲	▲	▲	▲	▲	▲	▲	▲	▲	▲	▲	▲	▲	▲	▲
2'9"	0.65	790	840	▲	▲	▲	▲	▲	▲	▲	▲	▲	▲	▲	▲	▲	▲	▲	▲
1,050	0.65	420	430	▲	▲	▲	▲	▲	▲	▲	■	▲	▲	▲	▲	▲	▲	▲	▲
3'5"	0.85	930	950	▲	▲	▲	▲	▲	▲	▲	■	▲	▲	▲	▲	▲	▲	▲	▲
1,250	0.80	480	490	■	▲	▲	■	■	▲	■	△	▲	▲	■	■	▲	▲	■	■
4'1"	1.05	1,060	1,080	■	▲	▲	■	■	▲	■	△	▲	▲	■	■	▲	▲	■	■

* Indicated loads are based on ISO 10567, at maximum reach, and may be swung 360° on firm and even ground

¹⁾ Standard bucket with teeth Uni 35-3

²⁾ HD bucket with teeth Uni 35-3

³⁾ Bucket for direct mounting

⁴⁾ Bucket for mounting to quick coupler

Other buckets available upon request

Max. material weight ▲ = ≤ 2.0 t/m³/3,400 lb/yd, ■ = ≤ 1.8 t/m³/3,000 lb/yd³, ▲ = ≤ 1.65 t/m³/2,800 lb/yd³, ■ = ≤ 1.5 t/m³/2,500 lb/yd³, △ = ≤ 1.2 t/m³/2,000 lb/yd³

Lift capacities

with mono boom 4.60 m / 15'1", counterweight 2.8 t / 6,170 lb and track pads 600 mm / 24"

Stick 2.05 m / 6'9"

Under-carriage	3.0 m 10 ft		4.5 m 15 ft		6.0 m 20 ft		m ft in
7.5 m t							
25 ft lb							
6.0 m t			3.8	4.1*			2.7*
20 ft lb			8.1	8.2*			6.1*
4.5 m t	5.2*	5.2*	3.7	4.4*			2.3
15 ft lb	11.2*	11.2*	8.0	9.7*			5.2
3.0 m t	6.4	8.0*	3.5	5.3*	2.3	3.5	2.0
10 ft lb	13.8	17.1*	7.5	11.5*	4.9	7.6	4.4
1.5 m t			3.2	5.2	2.2	3.4	1.8
5 ft lb	9.8*	9.8*	7.0	11.3	4.7	7.3	4.1
0 m t	5.5	6.1*	3.1	5.1	2.1	3.3	1.9
0 ft lb	11.9	14.1*	6.6	10.9	4.5	7.2	4.2
-1.5 m t	5.6	9.2*	3.0	5.0	2.1	3.4	2.1
-5 ft lb	11.9	20.0*	6.6	10.8	4.7	7.5	4.7
-3.0 m t	5.7	7.2*	3.1	4.9*	2.9	4.5*	2.9
-10 ft lb	12.3	15.5*	6.8	10.3*	6.5	9.9*	6.5

Stick 2.25 m / 7'5"

Under-carriage	3.0 m 10 ft		4.5 m 15 ft		6.0 m 20 ft		m ft in
7.5 m t							3.1*
25 ft lb							3.1*
6.0 m t			3.8	4.0*			2.4*
20 ft lb			8.2	8.4*			5.4*
4.5 m t	4.8*	4.8*	3.7	4.2*	2.3	3.2*	2.2
15 ft lb	10.4*	10.4*	8.0	9.2*	5.0	5.8*	4.9
3.0 m t	6.5	7.6*	3.5	5.1*	2.3	3.5	1.9
10 ft lb	14.0	16.1*	7.5	11.1*	4.9	7.6	4.2
1.5 m t	5.3*	5.3*	3.2	5.2	2.2	3.4	1.8
5 ft lb	12.3	12.8*	7.0	11.3	4.7	7.3	3.9
0 m t	5.5	6.3*	3.1	5.0	2.1	3.3	1.8
0 ft lb	11.8	14.5*	6.6	10.9	4.5	7.1	4.0
-1.5 m t	5.5	9.4*	3.0	5.0	2.1	3.3	2.0
-5 ft lb	11.8	20.5*	6.5	10.7	4.5	7.1	4.5
-3.0 m t	5.6	7.6*	3.1	5.1	2.7	4.3	2.7
-10 ft lb	12.1	16.3*	6.6	10.9	6.0	9.7	6.0

Height Can be slewed through 360° In longitudinal position of undercarriage Max. reach * Limited by hydr. capacity

The load values are quoted in tons (t) / lb x 1,000 at stick end (without bucket), and may be swung 360° on firm and even ground. Adjacent values are valid for the undercarriage when in the longitudinal position. Capacities are valid for 600 mm / 24" wide track pads. Indicated loads are based on ISO 10567 standard and do not exceed 75% of tipping or 87% of hydraulic capacity (indicated by *). Without bucket cylinder, link and lever the lift capacities will increase by 186 kg / 410 lb. Lifting capacity of the excavator is limited by machine stability and hydraulic capacity.

Determine maximum load lift from load lift chart displayed in the operator's cab or from load lift chart detailed in the operator's manual supplied with the machine.

Stick 2.45 m / 8'

Under-carriage	3.0 m 10 ft		4.5 m 15 ft		6.0 m 20 ft		m ft in
7.5 m t					2.7*	2.7*	3.6
25 ft lb					6.2*	6.2*	11'
6.0 m t			3.7*	3.7*			5.4
20 ft lb			8.2	8.2*			17'6"
4.5 m t			3.7	4.0*	2.3	3.4*	6.4
15 ft lb			8.1	8.8*	5.0	6.7*	20'11"
3.0 m t	6.6	7.1*	3.5	4.9*	2.3	3.5	6.9
10 ft lb	14.1	15.1*	7.6	10.7*	4.9	7.6	22'7"
1.5 m t	5.7	6.5*	3.2	5.2	2.1	3.4	7.1
5 ft lb	12.4	15.6*	7.0	11.3	4.6	7.3	23'2"
0 m t	5.5	6.5*	3.0	5.0	2.1	3.3	6.9
0 ft lb	11.7	14.9*	6.6	10.8	4.4	7.1	22'6"
-1.5 m t	5.4	9.6*	3.0	5.0	2.0	3.3	6.3
-5 ft lb	11.7	20.8*	6.4	10.7	4.4	7.0	20'8"
-3.0 m t	5.6	7.9*	3.0	5.0	2.5	4.0	5.3
-10 ft lb	12.0	17.0*	6.5	10.8	5.5	8.9	17'1"
7.5 m t					2.7*	2.7*	3.6
25 ft lb					6.2*	6.2*	11'
6.0 m t			3.7*	3.7*			5.4
20 ft lb			8.2*	8.2*			17'6"
4.5 m t			4.0	4.0*	2.5	3.4*	6.4
15 ft lb			8.7	8.8*	5.5	6.7*	20'11"
3.0 m t	7.0	7.1*	3.8	4.9*	2.5	3.6	6.9
10 ft lb	15.1*	15.1*	8.2	10.7*	5.3	7.7	22'7"
1.5 m t	6.2	6.5*	3.5	5.3	2.3	3.4	7.1
5 ft lb	13.4	15.6*	7.6	11.5	5.1	7.4	23'2"
0 m t	6.0	6.5*	3.3	5.1	2.2	3.3	6.9
0 ft lb	12.8	14.9*	7.2	11.0	4.9	7.2	22'6"
-1.5 m t	5.9	9.6*	3.3	5.0	2.1	3.1	6.3
-5 ft lb	12.8	20.8*	7.0	10.8	4.6	6.8	20'8"
-3.0 m t	6.1	7.9*	3.3	5.1	2.7	4.1	5.3
-10 ft lb	13.0	17.0*	7.1	11.0	6.0	9.1	17'1"
7.5 m t					2.7*	2.7*	3.6
25 ft lb					6.2*	6.2*	11'
6.0 m t			3.7*	3.7*			5.4
20 ft lb			8.2*	8.2*			17'6"
4.5 m t			4.0*	4.0*	2.7	3.4*	6.4
15 ft lb			8.8*	8.8*	5.7	6.7*	20'11"
3.0 m t	7.1*	7.1*	4.0	4.9*	2.6	4.1*	6.9
10 ft lb	15.1*	15.1*	8.6	10.7*	5.6	9.0*	22'7"
1.5 m t	6.5*	6.5*	3.7	6.0*	2.5	4.5*	7.1
5 ft lb	14.3	15.6*	8.0	12.9*	5.3	9.9*	23'2"
0 m t	6.4	6.5*	3.5	6.5*	2.4	4.8*	6.9
0 ft lb	13.7	14.9*	7.6	14.2*	5.1	10.4*	22'6"
-1.5 m t	6.4	9.6*	3.5	6.4*	2.3	4.6*	6.3
-5 ft lb	13.7	20.8*	7.4	13.9*	5.1	9.9*	20'8"
-3.0 m t	6.5	7.9*	3.5	5.4*	2.9	4.3*	5.3
-10 ft lb	13.9	17.0*	7.6	11.5*	6.4	9.5*	17'1"

Stick 2.65 m / 8'8"

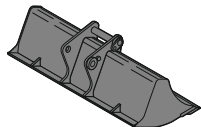
Under-carriage	3.0 m 10 ft		4.5 m 15 ft		6.0 m 20 ft		m ft in
7.5 m t							2.4*
25 ft lb							5.5*
6.0 m t			3.5*	3.5*			2.0*
20 ft lb			7.7*	7.7*			4.4*
4.5 m t			3.8	3.8*	2.4	3.4*	1.9*
15 ft lb			8.1	8.3*	5.1	7.0*	4.2*
3.0 m t	6.6*	6.6*	3.5	4.7*	2.3	3.5	1.7
10 ft lb	14.1*	14.1*	7.6	10.2*	4.9	7.6	3.8
1.5 m t	5.8	7.8*	3.2	5.3	2.1	3.4	1.6
5 ft lb	12.5	18.9*	7.0	11.3	4.6	7.3	3.6
0 m t	5.4	6.6*	3.0	5.0	2.0	3.3	1.6
0 ft lb	11.7	15.3*	6.5	10.8	4.4	7.1	3.6
-1.5 m t	5.4	9.2*	3.0	4.9	2.0	3.2	1.8
-5 ft lb	11.6	21.1*	6.4	10.6	4.3	7.0	4.0
-3.0 m t	5.5	8.2*	3.0	5.0			2.3
-10 ft lb	11.8	17.7*	6.4	10.7			5.1
7.5 m t							2.4*
25 ft lb							5.5*
6.0 m t			3.5*	3.5*			2.0*
20 ft lb			7.7*	7.7*			4.4*
4.5 m t			3.8*	3.8*	2.5	3.4*	1.9*
15 ft lb			8.3*	8.3*	5.5	7.0*	4.2*
3.0 m t	6.6*	6.6*	3.8	4.7*	2.5	3.6	1.9
10 ft lb	14.1*	14.1*	8.2	10.2*	5.3	7.7	4.1
1.5 m t	6.3	7.8*	3.5	5.3	2.3	3.4	1.8
5 ft lb	13.5	18.9*	7.6	11.5	5.0	7.4	3.9
0 m t	5.9	6.6*	3.3	5.1	2.2	3.3	1.8
0 ft lb	12.8	15.3*	7.1	11.0	4.8	7.2	3.9
-1.5 m t	5.9	9.2*	3.2	5.0	2.2	3.3	2.0
-5 ft lb	12.7	21.1*	7.0	10.8	4.7	7.1	4.4
-3.0 m t	6.0	8.2*	3.3	5.0			2.5
-10 ft lb	12.9	17.7*	7.0	10.9			5.6
7.5 m t							2.4*
25 ft lb							5.5*
6.0 m t			3.5*	3.5*			2.0*
20 ft lb			7.7*	7.7*			4.4*
4.5 m t			3.8*	3.8*	2.7	3.4*	1.9*
15 ft lb			8.3*	8.3*	5.8	7.0*	4.2*
3.0 m t	6.6*	6.6*	4.0	4.7*	2.6	4.0*	1.9*
10 ft lb	14.1*	14.1*	8.6	10.2*	5.6	8.7*	4.2*
1.5 m t	6.7	7.8*	3.7	5.8*	2.5	4.4*	1.9
5 ft lb	14.5	18.9*	8.0	12.6*	5.3	9.7*	4.1
0 m t	6.4	6.6*	3.5	6.5*	2.4	4.7*	1.9
0 ft lb	13.7	15.3*	7.6	14.0*	5.1	10.3*	4.2
-1.5 m t	6.3	9.2*	3.4	6.4*	2.3	4.6*	2.1
-5 ft lb	13.6	21.1*	7.4	14.0*	5.0	10.0*	4.6
-3.0 m t	6.4	8.2*	3.5	5.6*			2.6
-10 ft lb	13.8	17.7*	7.5	12.0*			5.9

Height Can be slewed through 360° In longitudinal position of undercarriage Max. reach * Limited by hydr. capacity

The load values are quoted in tons (t) / lb x 1,000 at stick end (without bucket), and may be swung 360° on firm and even ground. Adjacent values are valid for the undercarriage when in the longitudinal position. Capacities are valid for 600 mm / 24" wide track pads. Indicated loads are based on ISO 10567 standard and do not exceed 75% of tipping or 87% of hydraulic capacity (indicated via *). Without bucket cylinder, link and lever the lift capacities will increase by 186 kg / 410 lb. Lifting capacity of the excavator is limited by machine stability and hydraulic capacity.

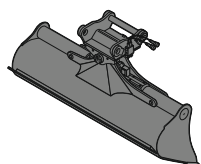
Determine maximum load lift from load lift chart displayed in the operator's cab or from load lift chart detailed in the operator's manual supplied with the machine.

Attachments



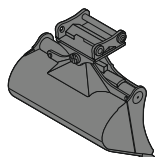
Rigid ditch cleaning bucket

GRL 90, for direct mounting					
Cutting width	mm / ft in	1,500 / 4'11"	2,000 / 6'7"	2,000 / 6'7"	
Capacity	m ³ / yd ³	0.35 / 0.46	0.48 / 0.63	0.65 / 0.85	
Weight	kg / lb	275 / 610	350 / 770	390 / 860	
GRL 90, for mounting to quick coupler SWA 33					
Cutting width	mm / ft in	1,500 / 4'11"	2,000 / 6'7"	2,000 / 6'7"	
Capacity	m ³ / yd ³	0.50 / 0.65	0.48 / 0.63	0.65 / 0.85	
Weight	kg / lb	360 / 790	350 / 770	390 / 860	
GRL 90, for mounting to quick coupler SWA 48					
Cutting width	mm / ft in	1,500 / 4'11"	1,500 / 4'11"	2,000 / 6'7"	2,400 / 7'10"
Capacity	m ³ / yd ³	0.50 / 0.65	0.95 / 1.24	0.70 / 0.92	0.85 / 1.11
Weight	kg / lb	430 / 950	560 / 1,240	400 / 880	600 / 1,320



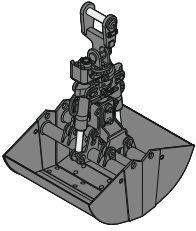
Tiltable ditch cleaning bucket

GRL 90, 2 x 50° tiltable, for direct mounting								
Cutting width	mm / ft in	1,600 / 5'3"	1,600 / 5'3"	2,000 / 6'7"	2,000 / 6'7"	2,200 / 7'3"	2,400 / 7'10"	
Capacity	m ³ / yd ³	0.55 / 0.72	0.80 / 1.05	0.50 / 0.65	0.70 / 0.92	0.80 / 1.05	0.85 / 1.11	
Weight	kg / lb	640 / 1,410	770 / 1,700	650 / 1,430	790 / 1,740	800 / 1,760	850 / 1,870	
GRL 90, 2 x 50° tiltable, for mounting to quick coupler SWA 33								
Cutting width	mm / ft in	1,600 / 5'3"	1,600 / 5'3"	2,000 / 6'7"	2,000 / 6'7"	2,000 / 6'7"	2,200 / 7'3"	
Capacity	m ³ / yd ³	0.55 / 0.72	0.80 / 1.05	0.50 / 0.65	0.70 / 0.92	1.00 / 1.31	0.80 / 1.05	
Weight	kg / lb	650 / 1,430	770 / 1,700	660 / 1,460	780 / 1,720	880 / 1,940	800 / 1,760	
GRL 90, 2 x 50° tiltable, for mounting to quick coupler SWA 48								
Cutting width	mm / ft in	1,600 / 5'3"	1,600 / 5'3"	2,000 / 6'7"	2,000 / 6'7"	2,000 / 6'7"	2,200 / 7'3"	2,400 / 7'10"
Capacity	m ³ / yd ³	0.55 / 0.72	0.80 / 1.05	0.50 / 0.65	0.70 / 0.92	1.00 / 1.31	0.80 / 1.05	0.85 / 1.11
Weight	kg / lb	730 / 1,610	850 / 1,870	740 / 1,630	870 / 1,920	940 / 2,070	870 / 1,920	930 / 2,050



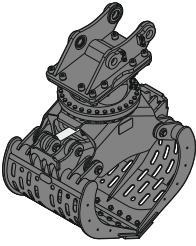
Tilt bucket

SL 90, 2 x 50° tiltable, for direct mounting						
Cutting width	mm / ft in	1,500 / 4'11"	1,600 / 5'3"			
Capacity	m ³ / yd ³	0.60 / 0.78	0.80 / 1.05			
Weight	kg / lb	650 / 1,430	740 / 1,630			
SL 90, 2 x 50° tiltable, for mounting to quick coupler SWA 33						
Cutting width	mm / ft in	1,500 / 4'11"	1,600 / 5'3"	1,600 / 5'3"		
Capacity	m ³ / yd ³	0.60 / 0.78	0.80 / 1.05	1.00 / 1.31		
Weight	kg / lb	660 / 1,460	740 / 1,630	740 / 1,630		
SL 90, 2 x 50° tiltable, for mounting to quick coupler SWA 33 and SWA 48						
Cutting width	mm / ft in	1,500 / 4'11"	1,600 / 5'3"	1,600 / 5'3"	1,600 / 5'3"	1,600 / 5'3"
Capacity	m ³ / yd ³	1.20 / 1.57	0.80 / 1.05	0.60 / 0.78	1.00 / 1.31	1.00 / 1.31
Weight	kg / lb	870 / 1,920	820 / 1,810	950 / 2,090	870 / 1,920	1,000 / 2,210
HD version		X		X		X



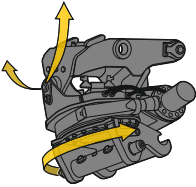
Clamshell grab

GM 5B, earthmoving shell, for mounting to quick coupler SWA 33						
Cutting width	mm / ft in	300 / 1'	400 / 1'4"	600 / 2'	800 / 2'7"	1,000 / 3'3"
Capacity	m ³ / yd ³	0.10 / 0.13	0.13 / 0.17	0.20 / 0.26	0.27 / 0.35	0.34 / 0.44
Weight	kg / lb	530 / 1,170	570 / 1,260	600 / 1,320	640 / 1,410	710 / 1,570
GM 8B, earthmoving shell, for mounting to quick coupler SWA 33						
Cutting width	mm / ft in	320 / 1'1"	400 / 1'4"	600 / 2'	800 / 2'7"	
Capacity	m ³ / yd ³	0.17 / 0.22	0.22 / 0.29	0.30 / 0.39	0.40 / 0.52	
Weight	kg / lb	750 / 1,650	840 / 1,850	780 / 1,720	830 / 1,830	



Sorting grab

		perforated				closed			
SG 20B, for mounting to quick coupler SWA 33									
Cutting width	mm / ft in	800 / 2'7"	1,000 / 3'3"	1,200 / 3'11"	1,400 / 4'7"	800 / 2'7"	1,000 / 3'3"	1,200 / 3'11"	1,400 / 4'7"
Capacity	m ³ / yd ³	0.40 / 0.52	0.50 / 0.65	0.60 / 0.78	0.70 / 0.92	0.40 / 0.52	0.50 / 0.65	0.60 / 0.78	0.70 / 0.92
Weight	kg / lb	750 / 1,650	795 / 1,750	840 / 1,850	990 / 2,180	765 / 1,690	810 / 1,790	850 / 1,870	1,010 / 2,230
SG 20B, for mounting to quick coupler SWA 48									
Cutting width	mm / ft in	800 / 2'7"	1,000 / 3'3"	1,200 / 3'11"	1,400 / 55"	800 / 2'7"	1,000 / 3'3"	1,200 / 3'11"	1,400 / 4'7"
Capacity	m ³ / yd ³	0.40 / 0.52	0.50 / 0.65	0.60 / 0.78	0.70 / 0.92	0.40 / 0.52	0.50 / 0.65	0.60 / 0.78	0.70 / 0.92
Weight	kg / lb	750 / 1,650	795 / 1,750	840 / 1,850	990 / 2,180	765 / 1,690	810 / 1,790	850 / 1,870	1,010 / 2,230



Tiltrotator

LH-TR 20, for mounting to quick coupler SWA 33	
Weight	kg / lb 470 / 1,040
Rotation	360°
Tilt	2 x 50°
LH-TR 20, for mounting to quick coupler SWA 48	
Weight	kg / lb 470 / 1,040
Rotation	360°
Tilt	2 x 50°

Serial Equipment

Undercarriage

Lashing eyes
Sprocket double-toothed
Track and carrier rollers, sealed and lifetime-lubricated
Undercarriage S

Uppercarriage

Centralized lubrication system (automatic)
Engine hood with gas spring opening
Filters accessible from ground level
Front right rearview mirrors
Hydraulic oil level, visible from ground level
Lockable fuel tank cap
Lockable service doors
Main switch, manual, lockable
Protection grid on radiator fan
Sound insulation
Swing drive gearbox oil level, visible from the cab
Swing-out fan
Windshield washer fluid tank

Hydraulic system

Filter with integrated fine filters
Hydraulic pressure measuring ports
Hydraulic tank shut-off valve
Liebherr Synchron Comfort System (LSC)
Magnetic rod
Pressure accumulator for controlled lowering of equipment with engine turned off

Engine

Air filter with automatic dust ejector
Automatic engine idling / speed increase, controlled via joystick sensors
Common-Rail injection system
Exhaust gas after-treatment system - DOC + SCR
Fixed geometry turbocharger
Fuel fine filter
Fuel pre-filter and water separator
Fuel priming pump
Intercooler
Power Pack US EPA Tier 4 Final
Stepless adjustable engine speed

Cab

7" multifunction color touchscreen
Air conditioning, automatic, tri-zone, controlled via display
Armrests adjustable in width, height and inclination
Bottle holder
Cab air filters housing, accessible from ground level
Cab door sliding windows
Coat hook
DEF consumption on touchscreen
DEF level on touchscreen
Electric socket in cabin (12 V)
Electric socket in cabin (24 V)
Emergency hammer
Fuel consumption on touchscreen
Fuel level on touchscreen
Impact resistant roof window
Interior lighting
Laminated right hand side window
LIDAT Plus (Liebherr data transfer system)*
Mechanical hour meters, visible from ground level
Rain hood over front window opening
Rearview mirror
Rear view monitoring camera
Rear window emergency exit
Roll-down sun blinds for windscreen and roof window
ROPS safety cab structure (ISO 12117-2)
Rubber floor mat, fixed on floor and removable
Shortcut button on joystick configurable
Storage nets
Storage spaces
Tilttable console left
Tinted windows
Visco-elastic damping
Windscreen wiper and washer
Work mode selector

Equipment

Boom cylinders regeneration
Pipe fracture safety valve for stick cylinder
Pipe fracture safety valves for boom cylinders
SAE split flanges on high pressure lines
Stick cylinder regeneration

* optionally extendable after one year

Equipment standard / option

Undercarriage

Chain guide 1 piece	●
Chain guide 3 pieces	+
Dozer and stabilizer blade 2,500 mm / 8'2"	+
Dozer and stabilizer blade 2,600 mm / 8'6"	+
Dozer and stabilizer blade 2,700 mm / 8'10"	+
Rubber track pads 500 mm / 20"	+
Special painting	+
Steps	+
Steps wide	●
Track pads triple grouser 500 mm / 20" / 700 mm / 28" / 900 mm / 35"	+
Track pads triple grouser 600 mm / 24"	●
Tracks, sealed and greased, with track pads	●
Undercarriage storage compartment	+

Uppercarriage

Air pre-filter with cyclonical dust trap	+
Counterweight standard 2.8 t / 6,170 lb	●
Electric socket on uppercarriage (24 V)	+
Extended tool set including tool box	+
Flashing beacon on uppercarriage, rear, LED, 1 piece	+
Fuel anti-theft protection	+
Headlight on uppercarriage, lateral right, LED+, 1 piece	+ ^U
Headlights on uppercarriage, front, halogen, 2 pieces, protections included	● ^U
Headlights on uppercarriage, front, LED+, 2 pieces, protections included	+ ^U
Headlights on uppercarriage, rear, LED+, 2 pieces	+ ^U
Pre-heating system for fuel	+
Reflective warning stickers	+
Reversible fan drive	+
Special painting	+
Tank refilling pump fuel	+
Tool set including storage case	●

Hydraulic system

Bypass filter for hydraulic oil	+
Liebherr hydraulic oil	●
Liebherr hydraulic oil, adapted for extreme climate conditions	+
Liebherr hydraulic oil, biodegradable	+

Engine

Automatic engine shutdown after idling	+
--	---

Equipment standard / option

Cab

3" seat belt with retractor, orange color	●
4-points seat belt	+
Acoustic travel alarm deactivatable	+
Attachment continuous operation system	+
Auxiliary heater programmable	+
Bottom windscreen wiper	+
Cool box (12 V)	+
Dark tinted windows	+
Emergency stop in cab	+
FGPS front guard	+
FGPS front guard tiltable	+
Filter for hydraulic hammer return flow	+
Fire extinguisher	+
First-aid box	+
Flashing beacon on cabin, LED, 1 piece	+
Footrest	+
FOPS top guard	+
Handrests elevated for joysticks	+
Headlights on cab, front, halogen, 2 pieces	● ¹⁾
Headlights on cab, front, LED+, 2 pieces	+ ¹⁾
Headlights on cab roof, front, LED+, 2 pieces	+ ¹⁾
High pressure circuit switchable on pedals or mini-joystick	+
High pressure circuit with Tool Control (20 attachment adjustments on display)	+
Impact resistant one-piece windscreen	+
Keyed immobilizer	+
Lightbar on cabin	+
Medium pressure circuit	+
Mini-joysticks proportional	●
Movement restriction for stick	+
Operator seat Comfort	+
Operator seat Premium	+
Operator seat Standard	●
Overload warning system	+
Preparation for machine guidance system	+
Radio Comfort	+
Radio pre-installation	●
Retractable laminated two-piece windscreen	●
Right hand side view monitoring camera	●
Roof sun shield	+
Roof window wiper	+
Special painting	+
Sun visor	+
SuperFinish	+
Switch between high pressure and bucket cylinder controls	+
Windscreen bottom protection grid	+

● = Standard, + = Option

¹⁾ Equipment not individually available, but only as predefined packages
Non-exhaustive list, please contact us for further information.

Options and/or special equipment, supplied by vendors other than Liebherr, are only to be installed with the knowledge and approval of Liebherr in order to retain warranty.

Equipment

Bucket cylinder rod protection	+
Centralized lubrication extended for connecting link	+
Centralized lubrication extended for quick coupler	+
Grapple hydraulic lines (bucket cylinder inactive)	+
Headlight guards on boom	+
Headlights on boom, halogen, 2 pieces	● ¹⁾
Headlights on boom, LED+, 2 pieces	+ ¹⁾
Headlights on stick, right and left, LED+, 2 pieces, protections included	+ ¹⁾
Leak oil line for attachment	+
Liebherr bucket range	+
Liebherr tooth system	+
Lifting eye on stick	+
LIKUFIX electric signal plug for quick coupler SWA 48	+
LIKUFIX for quick coupler SWA 33 hydraulic	+
LIKUFIX for quick coupler SWA 48 hydraulic	+
Load holding valve for bucket cylinder	+
Mono boom 4.60 m / 15'1"	+
Quick coupler SWA 33 hydraulic	+
Quick coupler SWA 33 mechanical	+
Quick coupler SWA 48 hydraulic	+
Quick coupler SWA 48 mechanical	+
Security for hoist cylinders	+
Special painting	+
Stick 2.05 m / 6'9"	+
Stick 2.25 m / 7'5"	+
Stick 2.45 m / 8'	+
Stick 2.65 m / 8'8"	+
Stick bottom protection	+
Tool Management	+

WARNING

This product can expose you to chemicals including lead and lead compounds, which are known to the State of California to cause cancer and birth defects or other reproductive harm.
For more information go to www.P65warnings.ca.gov.

WARNING

Breathing diesel engine exhaust exposes you to chemicals known to the State of California to cause cancer and birth defects or other reproductive harm.

- Always start and operate the engine in a well-ventilated area.
- If in an enclosed area, vent the exhaust to the outside.
- Do not modify or tamper with exhaust system.
- Do not idle the engine except as necessary.

For more information go to www.P65warnings.ca.gov/diesel.

Liebherr USA, Co.

Construction Equipment Division • 4800 Chestnut Avenue • Newport News, VA 23607, USA • Phone +1 (757) 240 4250
construction.usa@liebherr.com • www.liebherr.us • www.facebook.com/LiebherrConstruction