

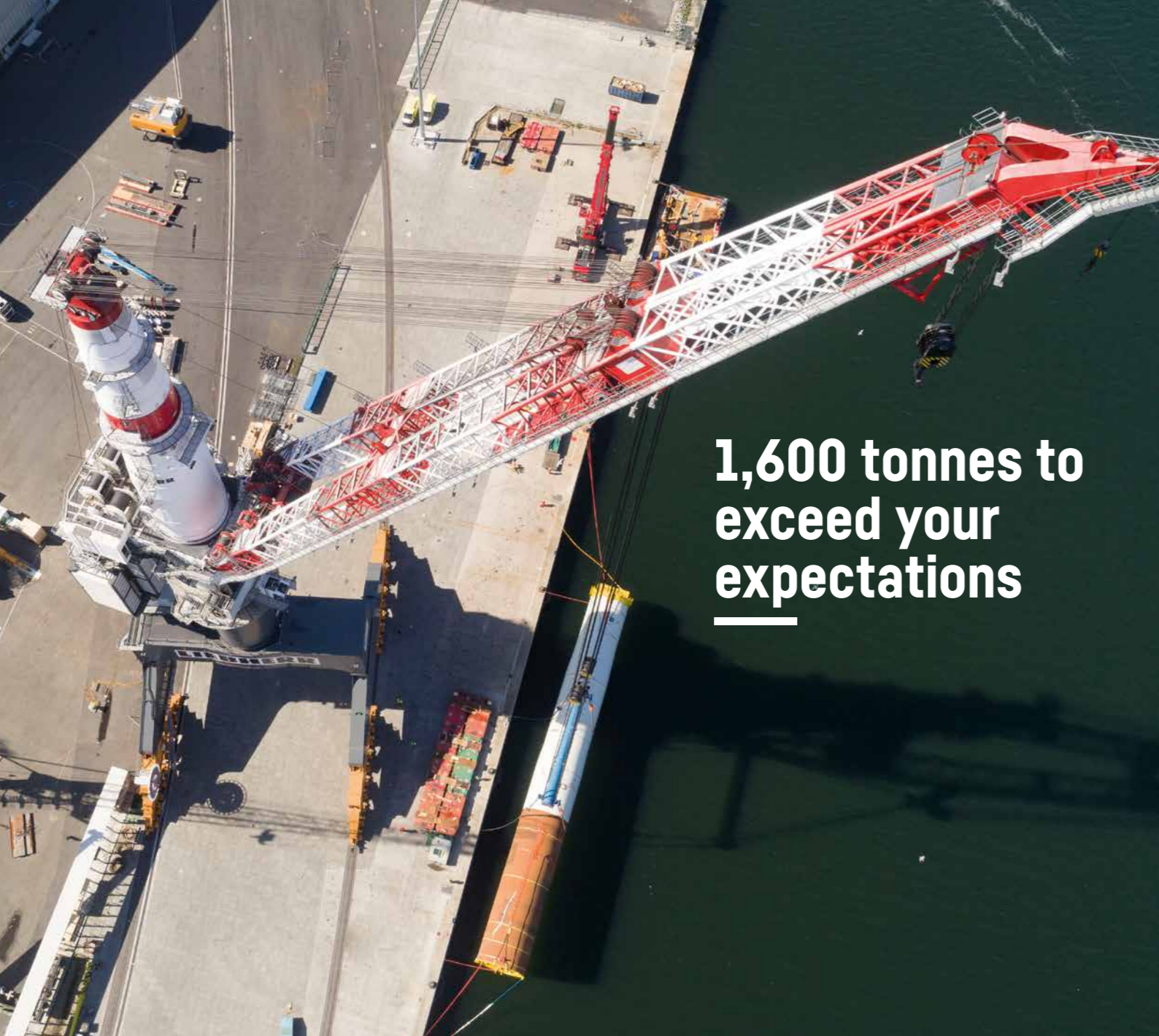
We heavy-lift your project

Service for handling of oversized and heavy goods
in Rostock, Germany
www.liebherr.com

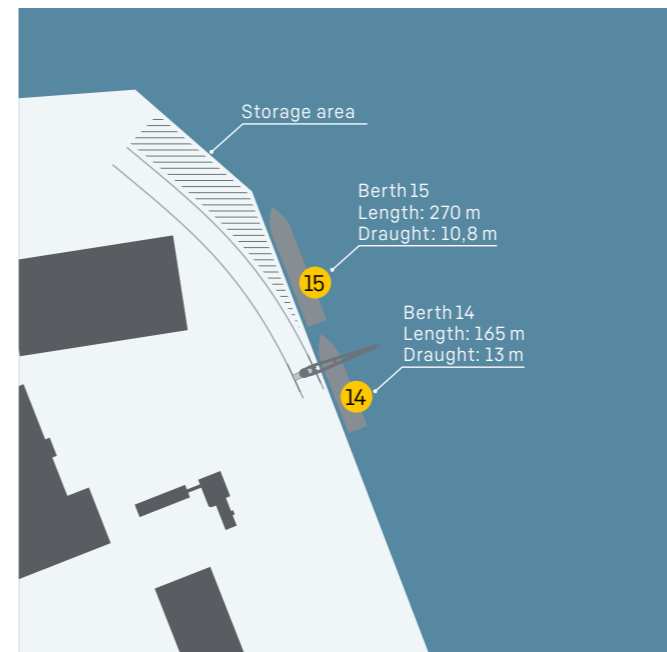
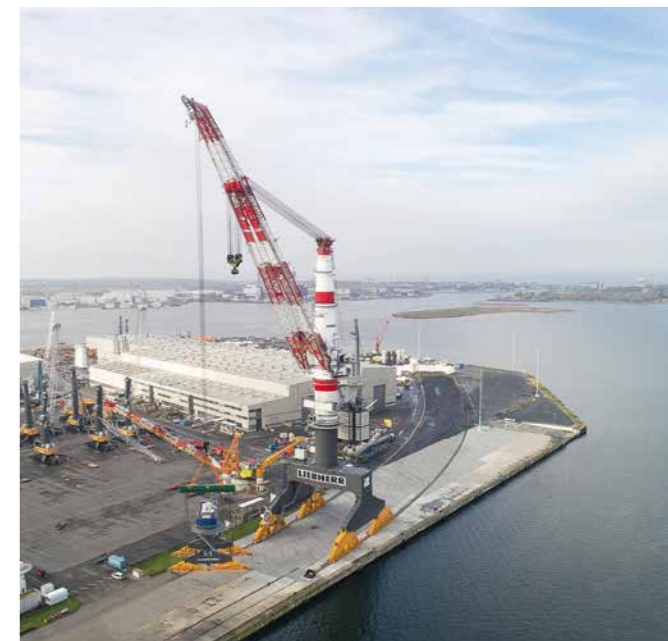
LIEBHERR

TCC 78000

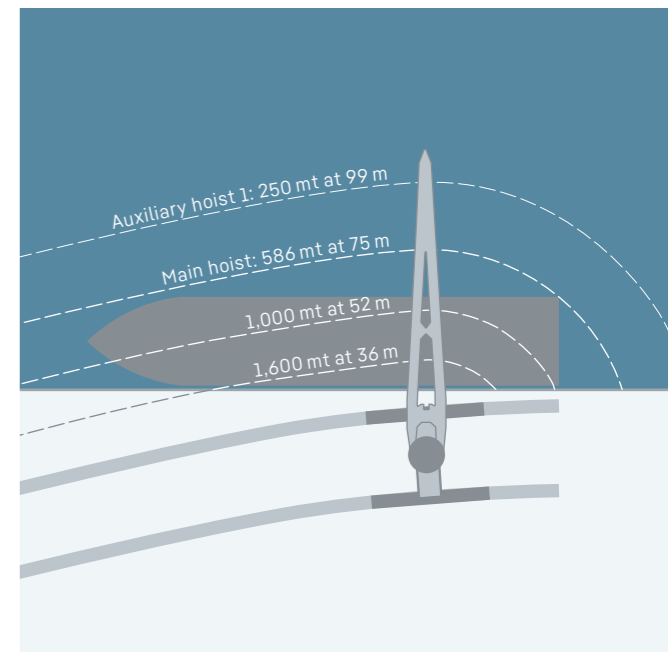




1,600 tonnes to exceed your expectations



Potential operating area of the TCC 78000



Working radius of the TCC 78000

The rail mounted heavy lift crane TCC 78000 provides a maximum lifting capacity of 1,600 tonnes and moves over 420 metres on a gantry track between the Liebherr-MCCTec Rostock GmbH factory site and the adjacent quayside. For the loading of all types of large-sized and heavy-duty goods in the Port of Rostock, Liebherr makes its heavy lift crane available to external companies. Liebherr offers you innovative lifting technology and the latest know-how to handle your project efficiently and safely.

Optimal accessibility in the Port of Rostock

- No shipping obstacles, locks, bridges etc.
- For ships with a draught of 13 metres, length of 300 metres and a width of 45 metres (special permissions possible)
- Connection to the hinterland via German rail network and to the A19 and A20 motorways

Suitable for several heavy loads

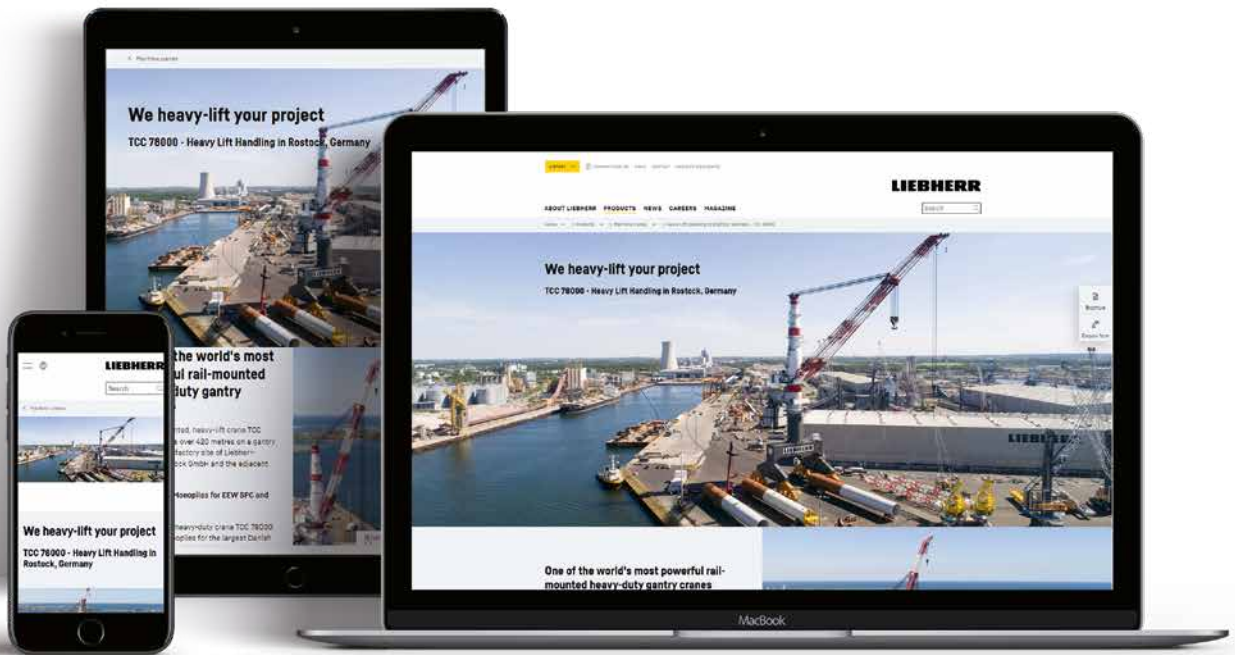
- Wind & offshore industry
- Shipbuilding industry
- Plant construction
- And many more

Customer benefits

- Heavy duty crane with 1,600 mt lifting capacity
- Optimal flexibility along the gantry track
- Efficient transloading operations in one work step
- Ideal hinterland connection via road and rail
- Storage area available on Liebherr yard
- High permissible ground bearing capacities on adjacent storage areas

Specifications TCC 78000

Drive system	Electro hydraulic
Slewing range	360°
Operating range	420 m gantry track (designed to travel under full load)
Maximum lifting capacities (SWL)	
Main Hoist 1	1,600 mt at 36 m radius
Aux. Hoist 1	500 mt at 62 m radius
Aux. Hoist 2	25 mt at 106 m radius
Maximum lifting heights	
Main Hoist 1	118 m
Aux. Hoist 1	134 m
Aux. Hoist 2	158 m



Get in contact

Visit our website for more information and request an individual offer for your heavy lift project.

