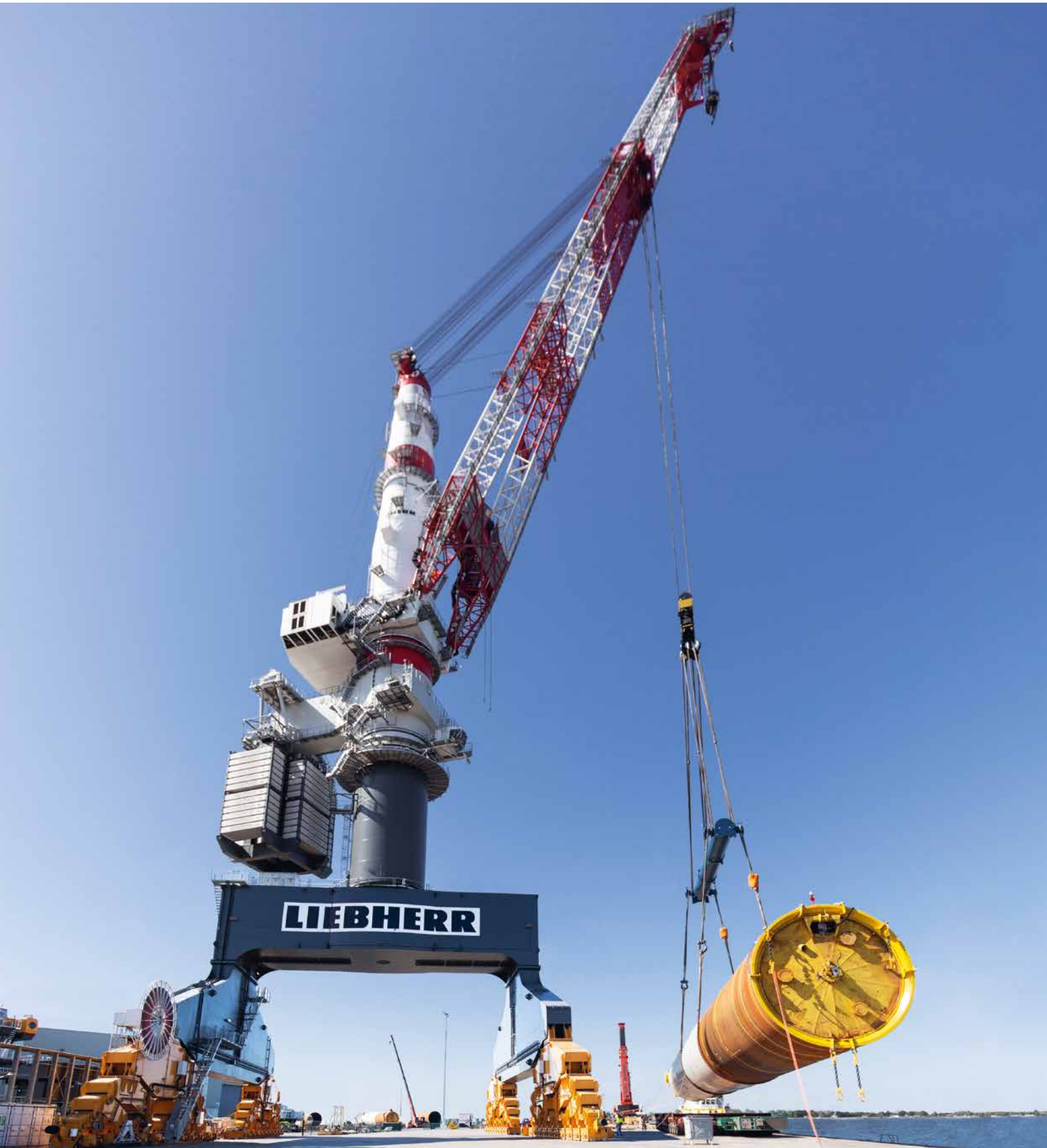


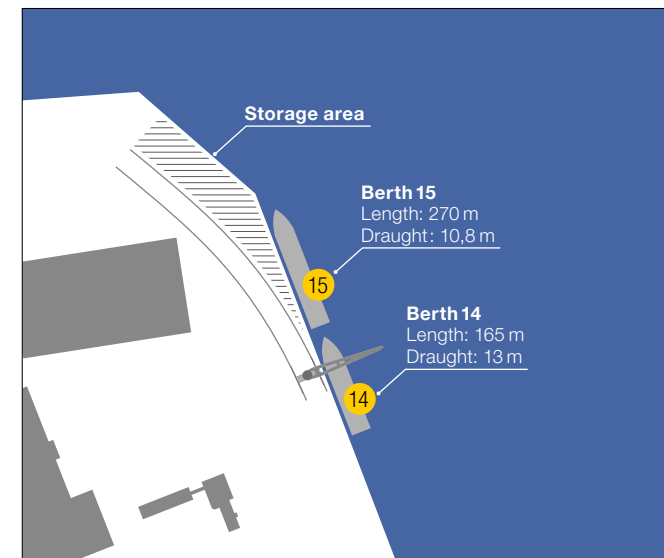
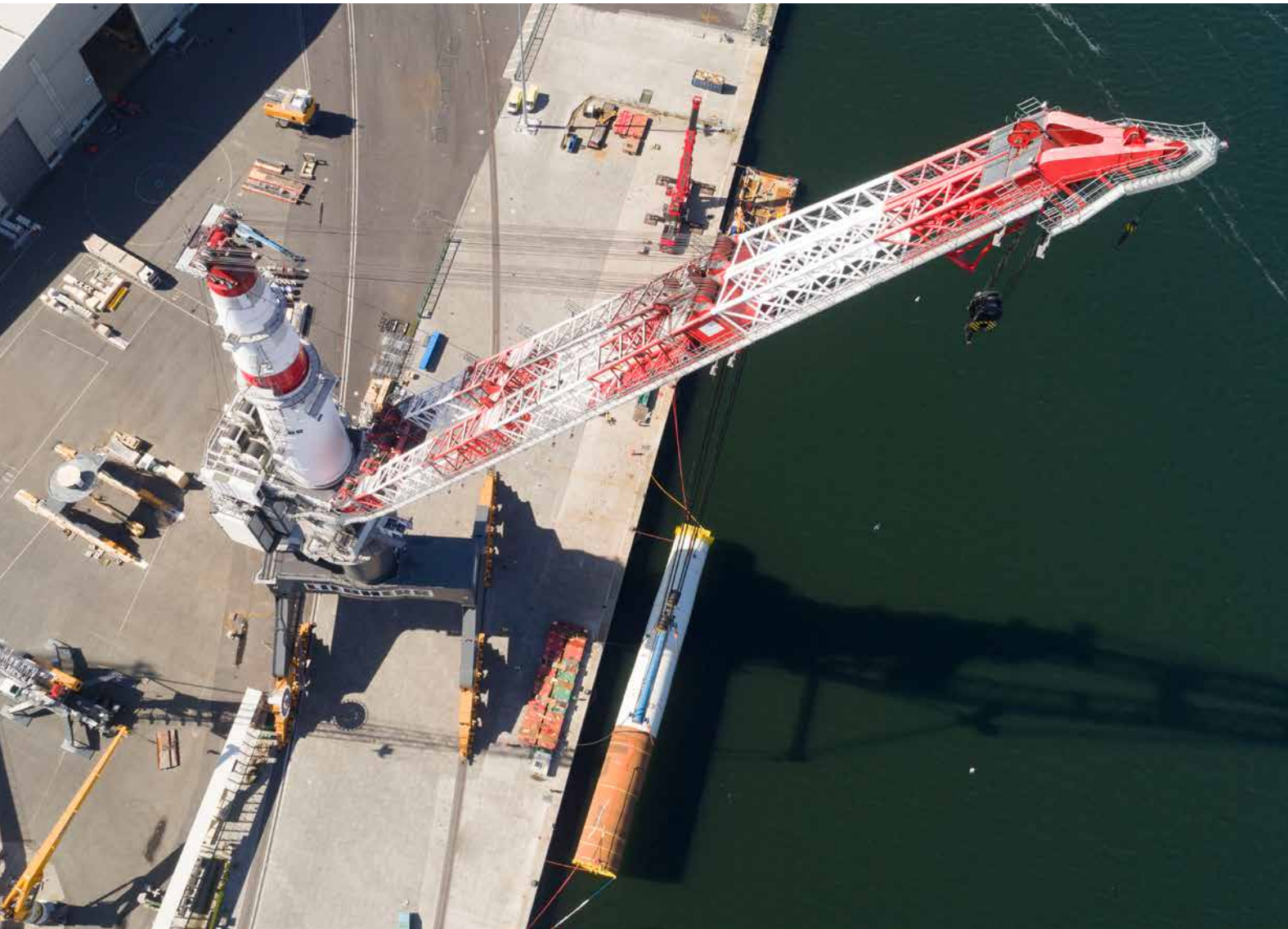
Heavy Lift Handling in Rostock, Germany

**1600t to exceed your Expectations**

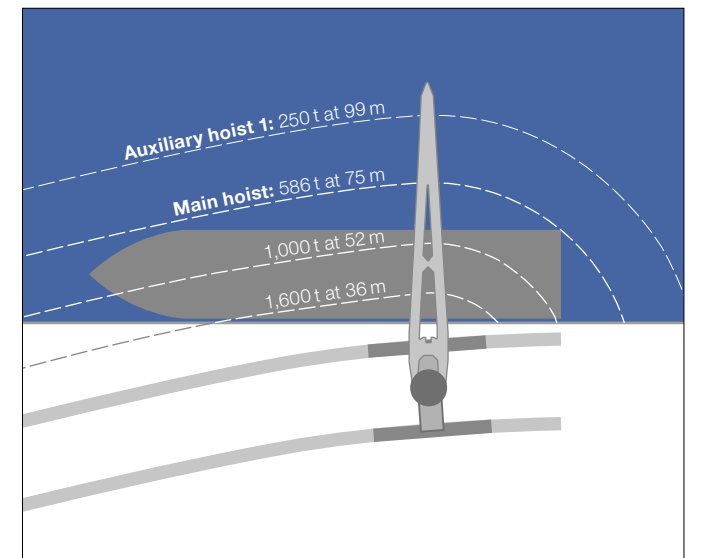


**LIEBHERR**

# We heavy-lift your Project



Potential operating area of the TCC 78000



Working radius of the TCC 78000

The rail mounted heavy lift crane TCC 78000 has a maximum lifting capacity of 1,600 tonnes and moves over 420 metres on a portal between the Liebherr-MCCtec Rostock GmbH factory site and the adjacent quayside. For the loading of all types of large-sized and heavy-duty goods in the Port of Rostock, Liebherr makes its heavy lift crane available to external companies. Liebherr offers you innovative lifting technology and the latest know-how to handle your project efficiently and safely.

## Optimal Accessibility in the Port of Rostock

- No shipping obstacles, locks, bridges etc.
- For ships with a draught of 13 metres, length of 300 metres, a width of 45 metres (special permissions possible)
- Connection to the hinterland via German rail network and to the A19 and A20 motorways

## Suitable for Several Heavy Loads

- Wind industry
- Shipbuilding industry
- Plant construction
- And many more

## Customer Benefits

- Designed for travelling with load for maximum flexibility
- Heavy-duty crane with maximum load capacity of 1,600 t
- 24/7 efficient cargo handling by experienced Liebherr personnel
- Optimal positioning of the cargo due to size of the gantry
- Gantry: 17 m clearance, 30 m track gauge
- Strategically well-placed land and sea connections

## Specifications TCC 78000

|                                       |                   |
|---------------------------------------|-------------------|
| Max. lifting capacity                 | 1,600 t           |
| Main hoist                            | 1,600 t at 36 m   |
| Auxiliary hoist 1                     | 250 t at 99 m     |
| Auxiliary hoist 2                     | 25 t at 105 m     |
| Max. lifting height main hoist        | 112 m at R = 34 m |
| Max. lifting height auxiliary hoist 2 | 158 m at R = 22 m |
| Stewing range                         | 360°              |
| Drive system                          | Electro-hydraulic |



# The Liebherr Group of Companies



## Wide Product Range

The Liebherr Group is one of the largest construction equipment manufacturers in the world. Liebherr's high-value products and services enjoy a high reputation in many other fields. The wide range includes domestic appliances, aerospace and transportation systems, machine tools and maritime cranes.

## Exceptional Customer Benefit

Every product line provides a complete range of models in many different versions. With both their technical excellence and acknowledged quality, Liebherr products offer a maximum of customer benefits in practical applications.

## State-of-the-art Technology

To provide consistent, top quality products, Liebherr attaches great importance to each product area, its components and core technologies. Important modules and components are developed and manufactured in-house, for instance the entire drive and control technology for construction equipment.

## Worldwide and Independent

Hans Liebherr founded the Liebherr family company in 1949. Since that time, the enterprise has steadily grown to a group of more than 130 companies with over 41,000 employees located on all continents. The corporate headquarters of the Group is Liebherr-International AG in Bulle, Switzerland. The Liebherr family is the sole owner of the company.

[www.liebherr.com](http://www.liebherr.com)

## Liebherr-MCCtec Rostock GmbH

Liebherrstraße 1, 18147 Rostock/GERMANY

Tel.: +49 381 6006 5020

[heavylifthandling@liebherr.com](mailto:heavylifthandling@liebherr.com)

[www.liebherr.com](http://www.liebherr.com)