

EN



LR 1130.1 unplugged

LR 1102.04.08
www.liebherr.com

LIEBHERR

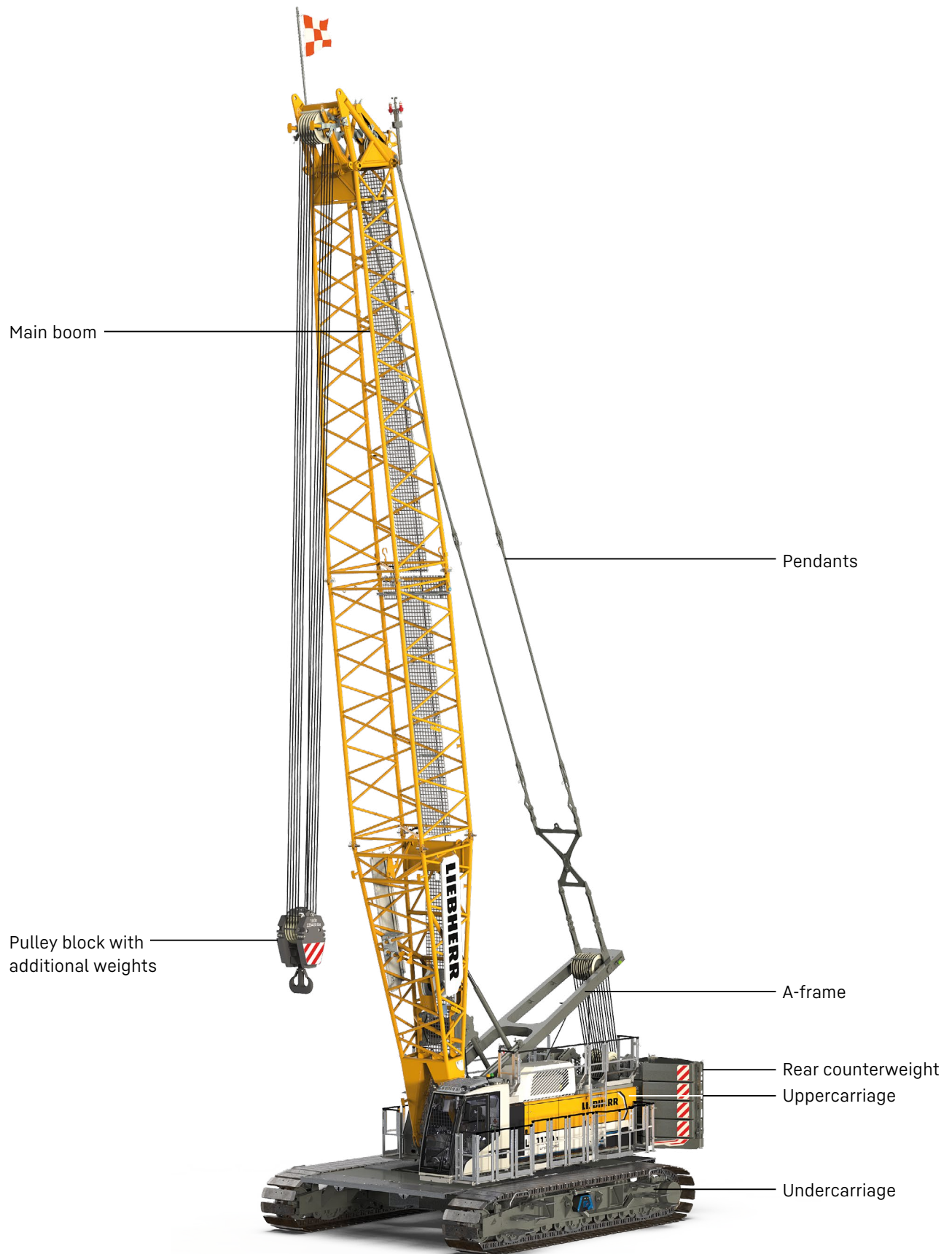
Crawler cranes

Concept and characteristics	3
Technical description	8
Dimensions	10
Transport dimensions and weights	11
Self-assembly system	14
Boom combinations	16
Main boom 2017.xx	18
Luffing jib 1309.xx	20
Fixed jib 0806.xx	26

Remarks

- The load capacities stated are valid for lifting operation only (corresponding with crane classification according to ISO 4301-1, crane group A1).
- Machine is standing on firm, horizontal ground.
- The weight of the lifting device (pulley block, hoist ropes, shackles, etc.) must be deducted from the load capacity.
- Additional equipment on boom (e.g. walkways) must be deducted from the load capacity.
- The max. admissible wind speed can be preselected in the LML software and referred to in the load chart.
- Working radii are measured from centre of swing and under load.
- The lifting capacities are valid for 360 degrees of swing.
- Calculation of stability under load is based on ISO 4305 Table 1 + 2 + 3, tipping angle 4°.
- The steel structures are calculated according to EN 13001-1; EN 13001-2.
- The last digits of the given dimensions are rounded to 0 and 5 and may differ from the actual dimensions.
- Weights may vary depending on the delivered configuration of the machine, filling level of the tanks, as well as generally valid tolerances.
- The figures in this brochure may include options which are not within the standard scope of supply of the machine.
- Subject to technical change without notice.

Concept and characteristics



Cabin with high comfort
- optimized view
- noise-reducing design
- orthopaedic seat

Additional
safety platform

Carbody counterweight 2 × 10 t

Crawler side frames with
1000 mm flat track pads

Platforms



High performance

A powerful, efficient and reliable electro-hydraulic drive system combined with a high-performance lithium-ion battery ensures high productivity and allows for several movements to be carried out simultaneously.

Cabin with high comfort

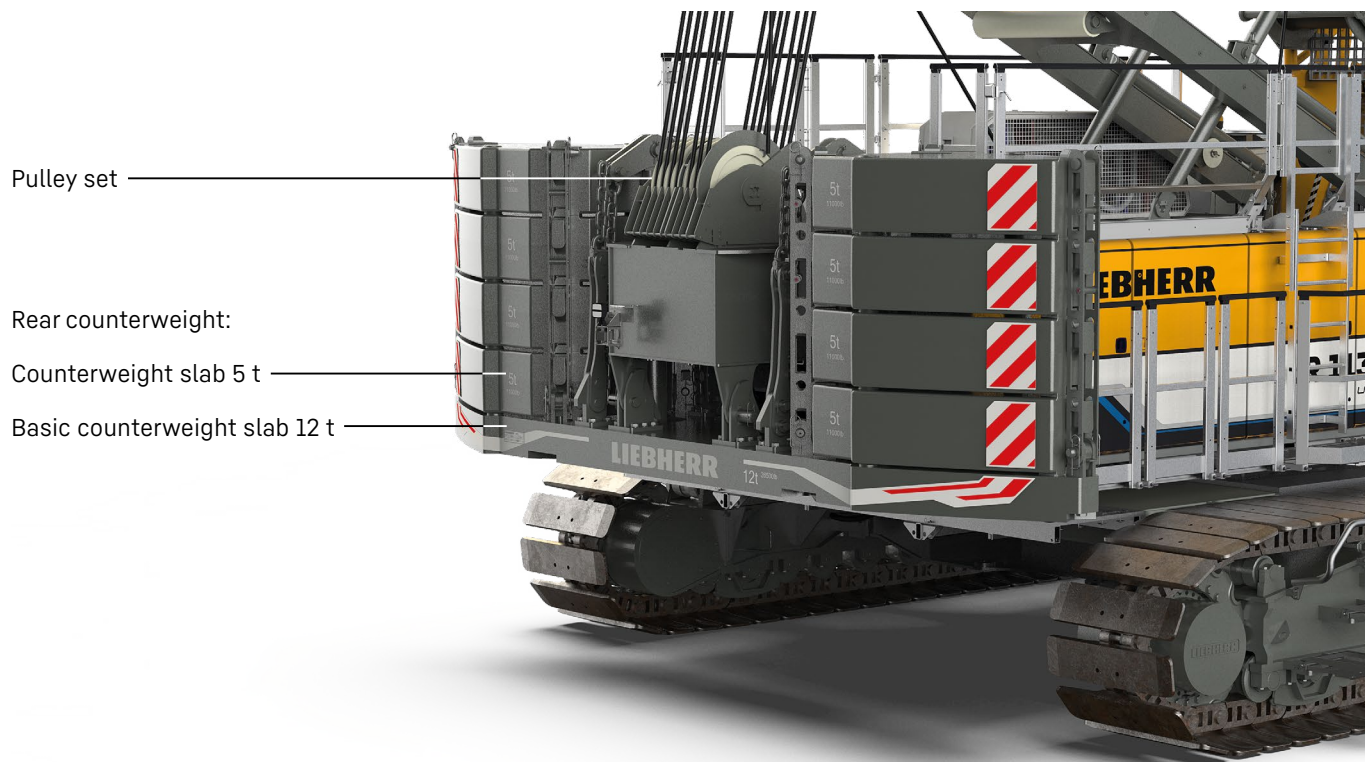
Optimised field of vision combined with enhanced comfort: an orthopaedic operator's seat with heating and cooling functions, as well as precise and ergonomic controls are included.

Ground pressure

The actual ground pressure is calculated according to the configuration and position of the machine and displayed in the operator's cabin. Using the optional Liebherr Crane-Planner the actual ground pressure can already be calculated and displayed in the planning stage.

Control

Easy and intuitive handling of control, service and machine functions through a large, clear colour monitor. Built for extreme environmental conditions.



Efficient self-assembly system and short assembly times

The self-assembly system enables safe, independent and quick assembly/disassembly of the crawler side frames, the carbody and rear counterweights, as well as boom elements.

Easy service

The design ensures easy maintenance and service as well as safe access to the components.

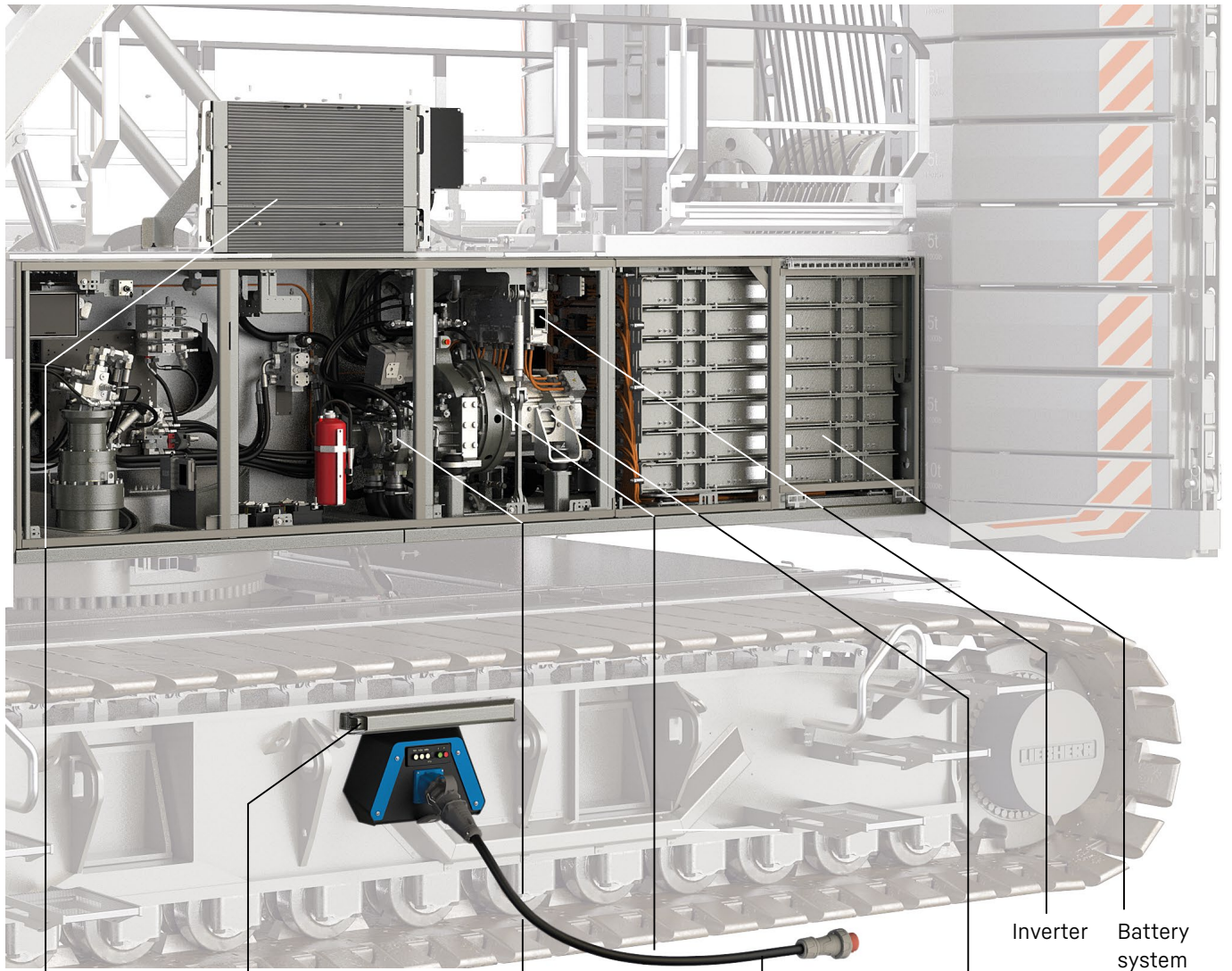
Mobility

Crane parts are optimized for transportation. The maximum transport width is 3 m.

Boom/jib

A variety of boom systems and configurations allow for optimum operation on the most diverse jobsites.

Exemplifying illustration



Combination cooler with expansion tank

Cantilever for electric cable

Hydraulic pumps

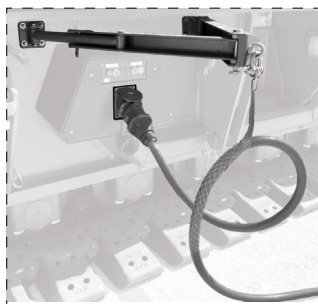
Distribution gearbox

Charging cable

Electric engine

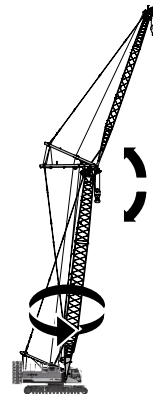
Inverter

Battery system

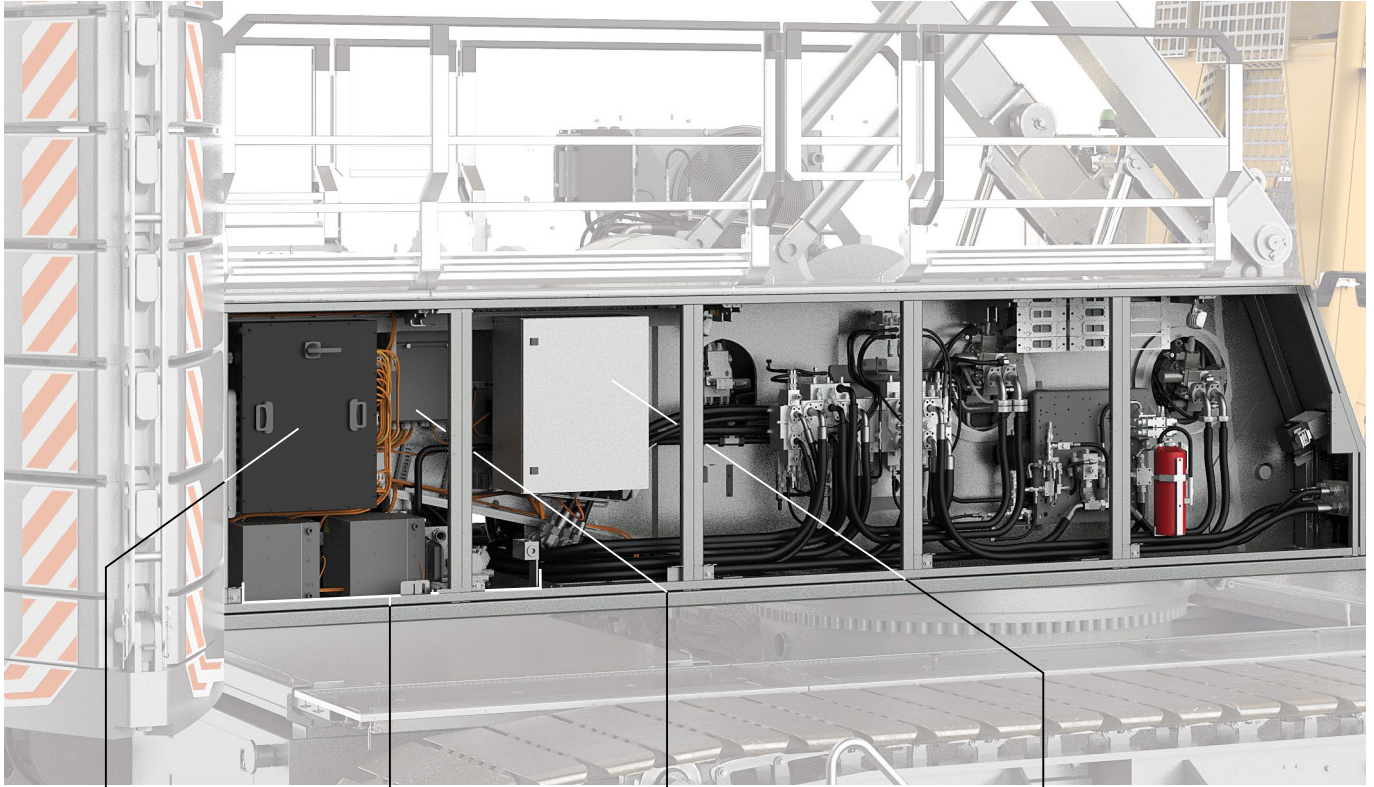


Performance “plugged in”

The crane’s performance in “plugged-in” operation is in no way inferior to its diesel-driven performance. The machine can be used without limitations as the battery charges continuously when connected and so delivers sufficient energy at all times.



Exemplifying illustration



Switch cabinet 700 V DC
(Direct Current)

Thermal management
system

Switch cabinet 400 V AC
(Alternating Current)

Switch cabinet 24 V LVDU
(Low Voltage Distribution Unit)

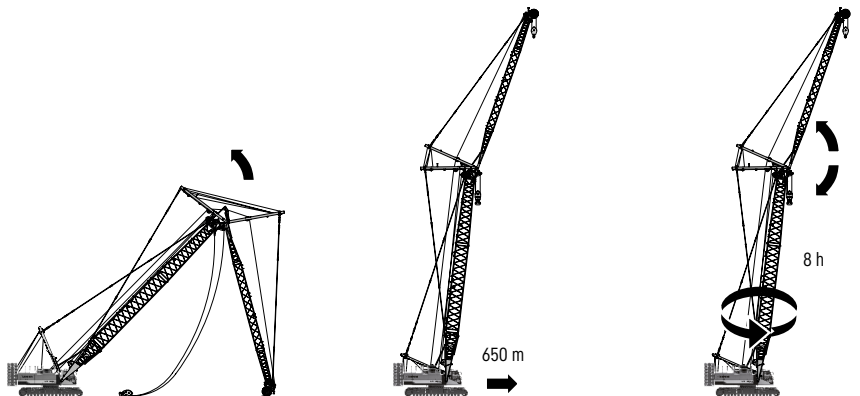
Performance “unplugged”

The crane's performance⁽¹⁾ in “unplugged” operation allows for erecting the boom and jib, for travelling a distance of approx. 650 m⁽²⁾ with full counterweight or for approx. 8 hours⁽³⁾ of crane operation.

¹ Battery service life can be optimized by operating the crane in “plugged-in” operation as often as possible.

² Fully ballasted on even terrain at 10-25 °C ambient temperature

³ With an observation period of 10000 shifts, in 50 % of all shifts the crane can operate in “unplugged” mode for approx. 8 hours at an ambient temperature of 10-25 °C.



Technical description



Drive system

Max. drive power	255 kW (45 °C temperature of cooling water)
Battery type	High Performance Battery System
Technology	Li-Ion NMC (nickel manganese cobalt)
Max. charging power	20 kW @ 32 A 40 kW @ 63 A
Option	80 kW @ 125 A
Mains voltage	400-480 VAC (3 phase + N + PE / 3 phase + PE)



Noise measurement data and vibration

Noise emission	according to 2000/14/EC directive	
Emission sound pressure level L_{PA}	n.a. dB(A)	(in the cabin)
Guaranteed sound power level L_{WA}	n.a. dB(A)	(of the machine)
Vibration transmitted to the machine operator	< 2.5 m/s ²	(to the hand-arm system)
	< 0.5 m/s ²	(to the whole body)



Hydraulic system

Hydraulic pumps	double axial displacement pump in open loop hydraulic system allows all functions to be operated simultaneously automatic working pressure cut-off to minimize peak pressure
Hydraulic oil tank capacity	650 l
Max. working pressure	350 bar
Hydraulic oil	electronic monitoring of all filters use of synthetic environmentally friendly oil



Control

Control system	includes all control and monitoring functions, designed to withstand extreme environmental conditions and heavy construction tasks
Display	high resolution monitor in the operator's cabin, clear display of complete machine operating data, warnings and failure indications in the required language
Operation	several movements can be performed simultaneously thanks to electro-hydraulic proportional control, all categories of loads can be positioned with utmost precision



Crawlers

Drive system	with fixed axial piston hydraulic motors
Crawler side frames	maintenance-free, with hydraulic chain tensioning device
Brake	hydraulically released, spring-loaded multi-disc holding brake
Drive speed	0-1.7 km/h
Flat track pads	width 1000 mm



Swing gear

Drive system	with fixed axial piston hydraulic motors, planetary gearbox, pinion
Swing ring	roller bearing with external teeth
Brake	hydraulically released, spring-loaded multi-disc holding brake
Swing speed	0-2.2 rpm continuously variable
Speed control	both swing modes are possible - speed control or free swing for speed control: a multi-disc holding brake locks automatically at zero swing motion.



Hoisting gear

Standard crane winches 1 + 2	Internal low-maintenance planetary gearbox in oil bath, load support by the hydraulic system, spring-loaded, multi-disc holding brake, pressure controlled, variable flow hydraulic motors for the main winches, full utilisation of engine power as the winch speed is automatically adjusted to suit the respective line pull
Line pull in the 7 th layer	120 kN
Rope diameter	26 mm
Drum diameter	580 mm
Rope speed	0-136 m/min
Rope capacity in 7 layers	489 m
Option - winch with free fall	Free fall: clutch and braking functions are provided by the service brake (low wear and maintenance-free multi-disc brake in compact design)






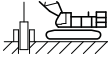


Boom/jib luffing winches

Main boom	
Line pull	max. 180 kN
Rope diameter	24 mm
Boom luffing	15-86° in 96 s
Jib	
Line pull	max. 105 kN
Rope diameter	20 mm
Jib luffing	15-78° in 46 s

Operating weight

Composition of operating weight	basic machine with crawlers winches 1 + 2, A-frame 17 m main boom, consisting of boom foot (7 m) and boom head (10 m) 52.3 t rear counterweight (8 × 5 t + 1 × 12 t + 0.3 t) 20 t carbody counterweight (2 × 10 t) 160 t pulley block
Total weight	approx. 150.4 t

Operation modes

	 Lifting mode	 Grab mode	 Personnel lifting mode	 Foundation work
 Land	✓	✓	✓	✓
 Floating structure (barge operation)	✓	✓	✓ *	✓

* only valid for jack-up barges

Optional equipment

Basic machine

Load hook 12.5 / 40 / 80 / 100 / 160 t

Main winches 12 t with free fall

Painting in customer design

Boom/jib

Luffing jib: luffing winch

Boom/jib other

Walkways for main boom sections 3 / 6 / 12 m

Application packages

Assembly radio remote control

Main winch constant tension for one winch

Operation mode: barge operation

Operation mode: foundation work

Operation mode: personnel lifting

Radio remote control

Rope reeving function via radio remote control

Tagline winch 2 t free fall

Two hook operation

Use of luffing jib winch as auxiliary winch

Winch synchronization

Special features

Crane Planner 2.0

LiDAT

Self-assembly system

Jack-up system standard / telescopic

Reeving winch

Self-assembly system counterweight

Self-assembly cylinder

Service package

Central lubrication swing ring bearings / outside

Cold package -25 °C

Hydraulic oil bypass filter

Liebherr hydraulic oil plus 37 (longlife & bio)

Liebherr hydraulic oil plus arctic (longlife & bio)

Liebherr hydraulic oil plus arctic (longlife)

Safety features

Access control

Additional access ladder for boom assembly

Aircraft warning light

Airport flag holder

Assistance system: Boom Up-and-Down Assistant

Assistance system: Gradient Travel Aid

Assistance system: Ground Pressure Indication and Visualization

Assistance system: Horizontal Load Path

Assistance system: Vertical Line Finder

Cabin protection roof, FOPS 2

Earth spike

Lifting height indication for both hoist winches

Lightning rod

Mechanical angle display

Platforms and railings on uppercarriage 580 mm

Plug&Play diesel-hydraulic back-up unit 18.4 kW

Railings for cabin platform

Railings on rooftop foldable

Rear and side view cameras

Swing and boom radius limit device

Swing warning light

Vandalism cabin protection

Winch camera

Zoom camera at boom head section

Operator's comfort

Additional access ladder

Additional floodlights

Cabin air conditioner

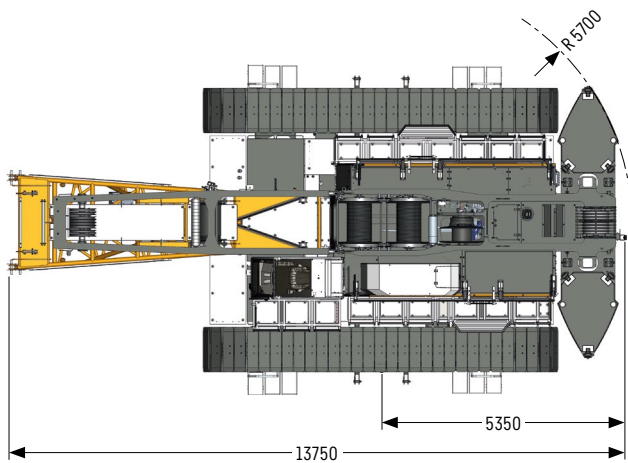
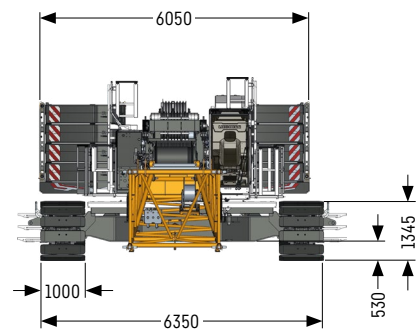
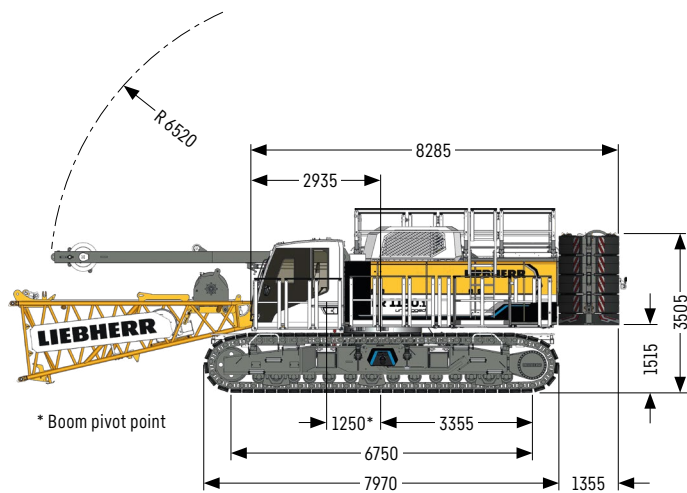
Cabin tilting device hydraulic

Gear oil level warning

Storage box for tools (crawler side frame)

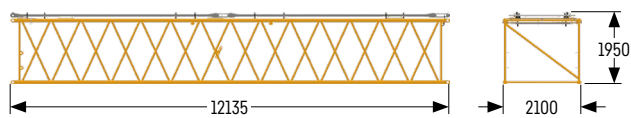
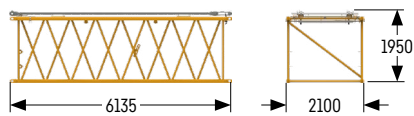
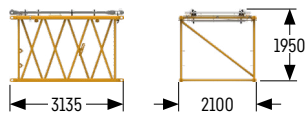
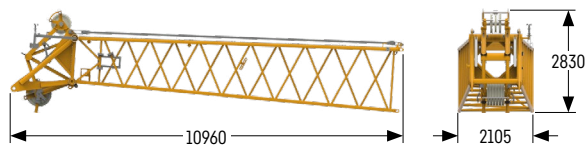
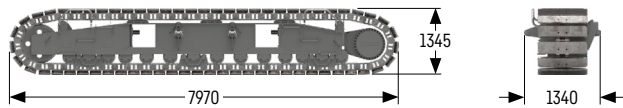
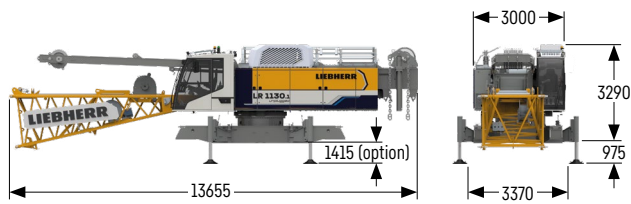
Dimensions

Basic machine with undercarriage



Transport dimensions and weights

Basic machine and boom 2017.xx



Basic machine

Weight without hoist rope	kg	36400
Weight of hoist ropes	kg/m	3.4
with A-frame 1, winches 1 + 2 (2x 120 kN), with boom foot, without rear counterweight, without carbody counterweight and crawler side frames		

Crawler side frame

Weight flat track pads 1000 mm	kg	16000
--------------------------------	----	-------

Boom head 10 m (No. 2017.21)

Weight including boom pendants	kg	3000
--------------------------------	----	------

Boom section 3 m (No. 2017.21)

Weight including boom pendants	kg	570
Weight incl. boom and jib pendants	kg	640

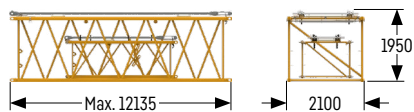
Boom section 6 m (No. 2017.21)

Weight including boom pendants	kg	930
Weight incl. boom and jib pendants	kg	1016

Boom section 12 m (No. 2017.21)

Weight including boom pendants	kg	1655
Weight incl. boom and jib pendants	kg	1870

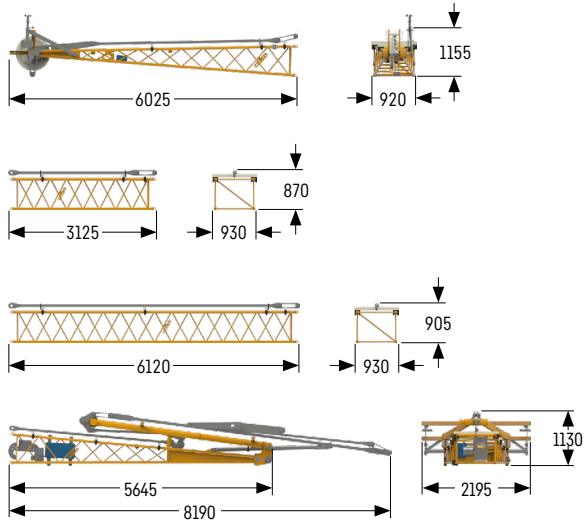
Transport option 2017.xx / 1309.xx



Transport option (No. 2017.xx / 1309.xx)

No. 2017.xx / 1309.xx	m	6 / 6	12 / 11.7
Weight including pendants	kg	1580	2830

Fixed jib 0806.xx



Jib head 5.5 m (No. 0806.16)

Weight including pendants	kg 442
---------------------------	--------

Jib section 3 m (No. 0806.15)

Weight including pendants	kg 141
---------------------------	--------

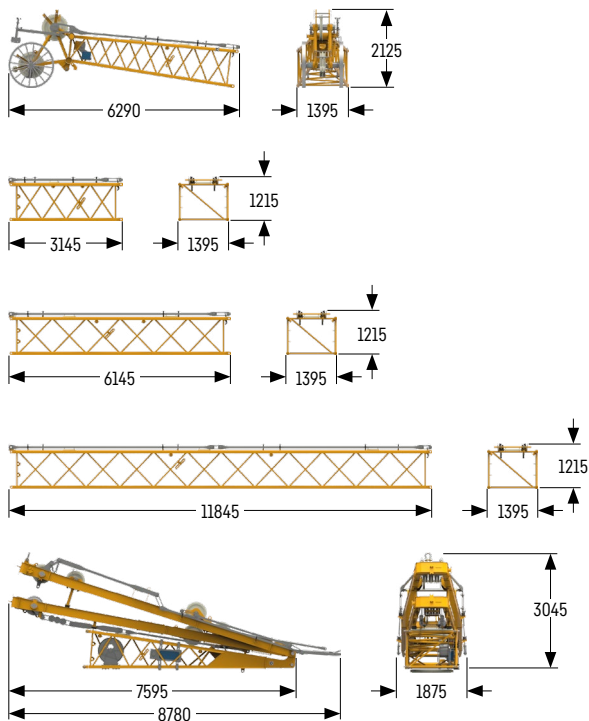
Jib section 6 m (No. 0806.15)

Weight including pendants	kg 249
---------------------------	--------

Jib foot 5.5 m with A-frame (No. 0806.16)

Weight including pendants	kg 1122
---------------------------	---------

Luffing jib 1309.xx



Jib head 5.5 m (No. 1309.22)

Weight including pendants	kg 1127
---------------------------	---------

Jib section 3 m (No. 1309.20)

Weight including pendants	kg 307
---------------------------	--------

Jib section 6 m (No. 1309.20)

Weight including pendants	kg 511
---------------------------	--------

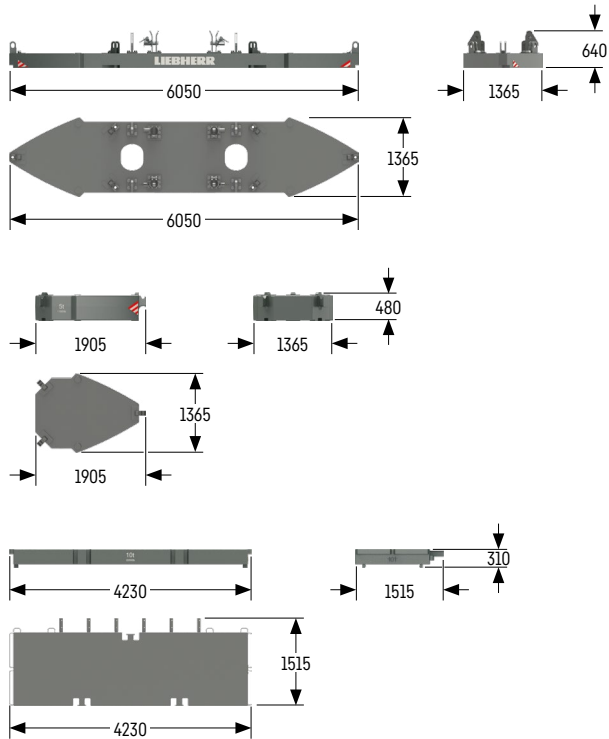
Jib section 11.7 m (No. 1309.20)

Weight including pendants	kg 941
---------------------------	--------

Jib foot 5.5 m with A-frames 2 + 3 (No. 1309.22)

Weight including pendants	kg 4553
---------------------------	---------

Counterweight



Basic counterweight slab without tie-down (1x)

Weight	kg 12000
--------	----------

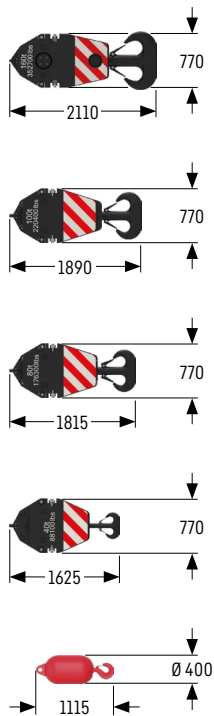
Counterweight slab (8x)

Weight	kg 5000
--------	---------

Carbody counterweight slab (2x)

Weight	kg 10000
--------	----------

Pulley block with additional weights / load hooks



160 t pulley block - 7 pulleys

Width	mm 885
Weight	kg 1500 / 2250 / 3000

100 t pulley block - 5 pulleys

Width	mm 745
Weight	kg 1300 / 1800 / 2300

80 t pulley block - 3 pulleys

Width	mm 565
Weight	kg 1000 / 1500 / 2000

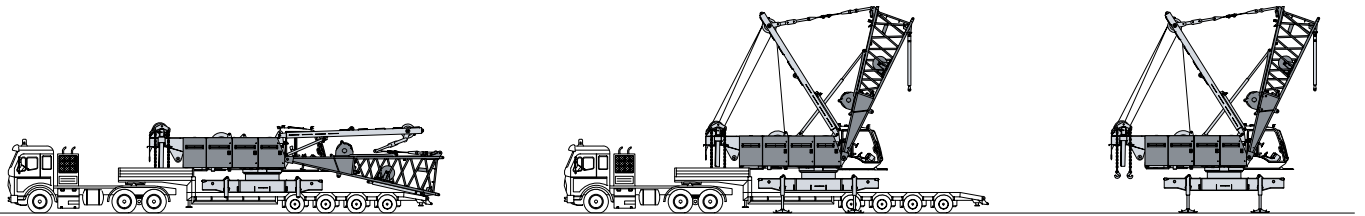
40 t pulley block - 1 pulley

Width	mm 490
Weight	kg 700 / 1100 / 1500

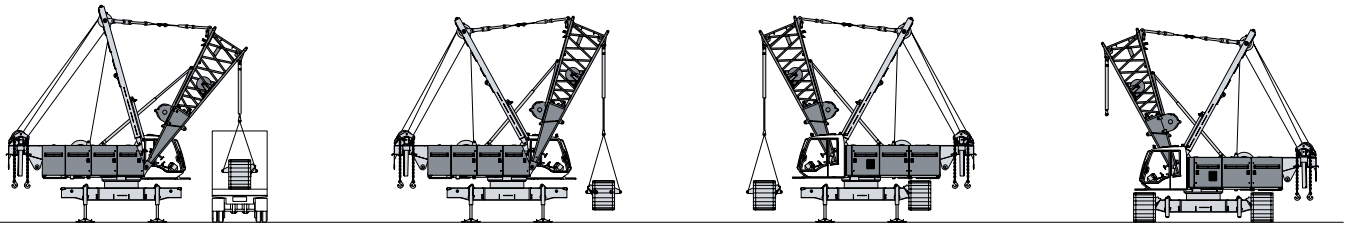
12.5 t load hook

Weight	kg 600
--------	--------

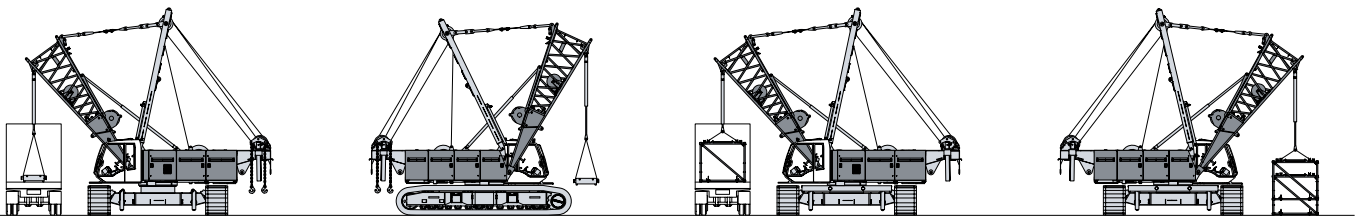
Self-assembly system



Unloading of basic machine

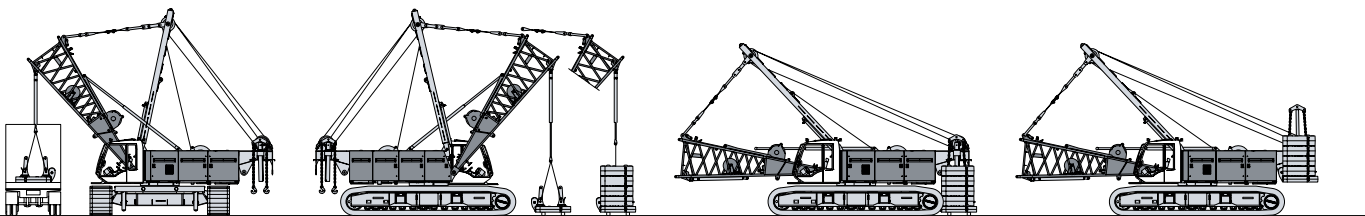


Unloading and assembly of crawler side frames

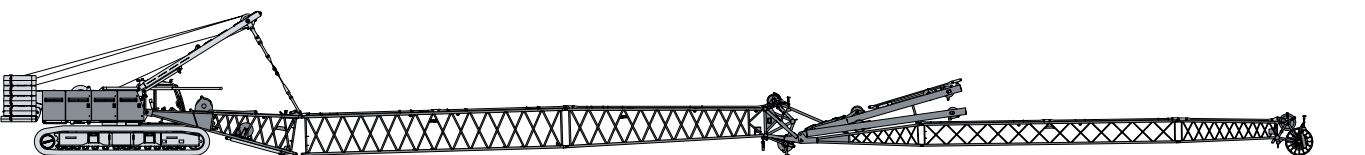


Unloading and assembly of carbody counterweight

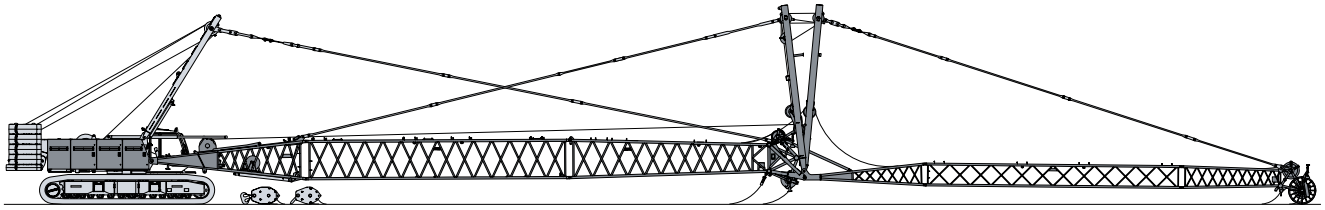
Unloading and assembly of boom



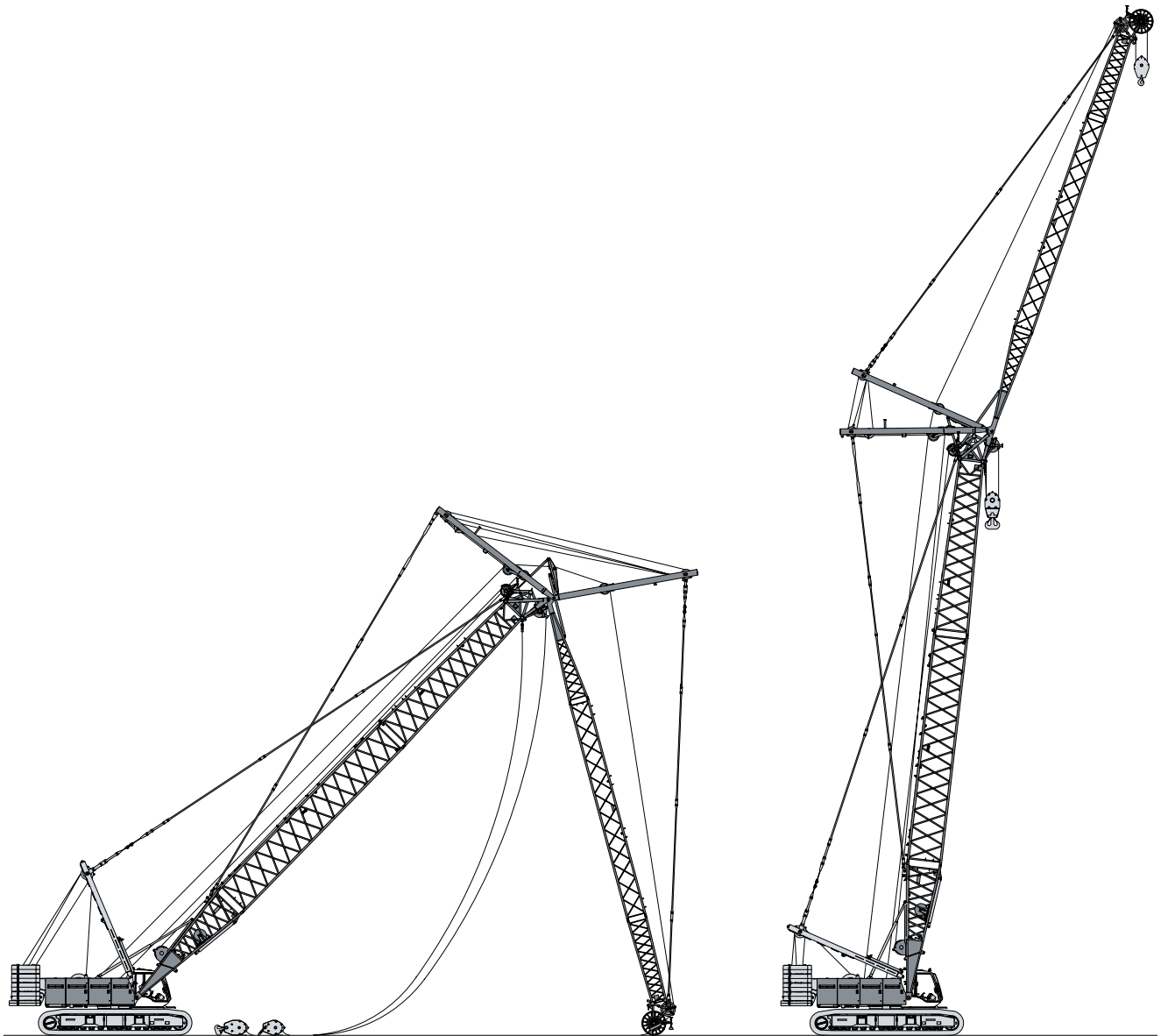
Unloading and assembly of rear counterweight



Assembly of boom

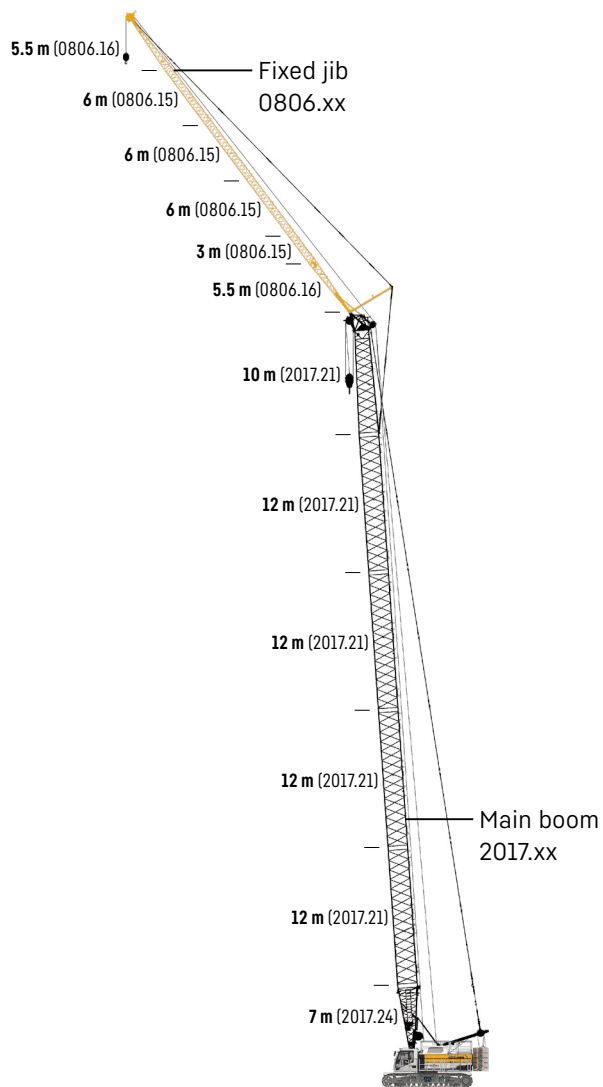
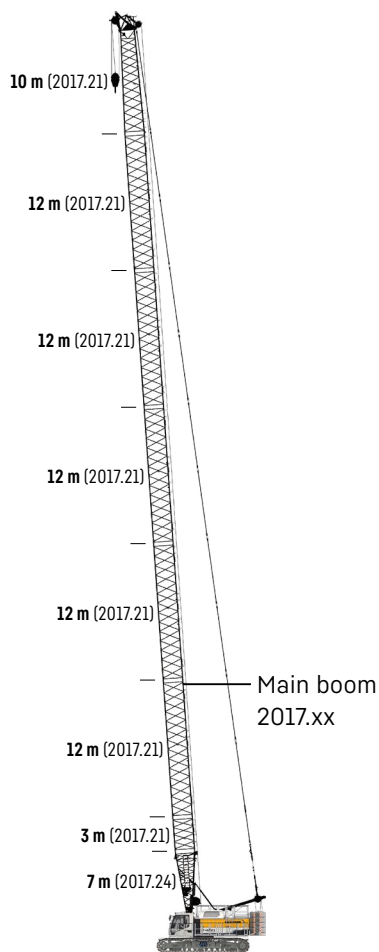


Reeving of hoist and luffing jib ropes



Erecting of main boom and luffing jib

Boom combinations



Main boom

Mode 1

Max. length

2017.xx m 80

Further information on page 18.

Main boom + fixed jib

Mode 3

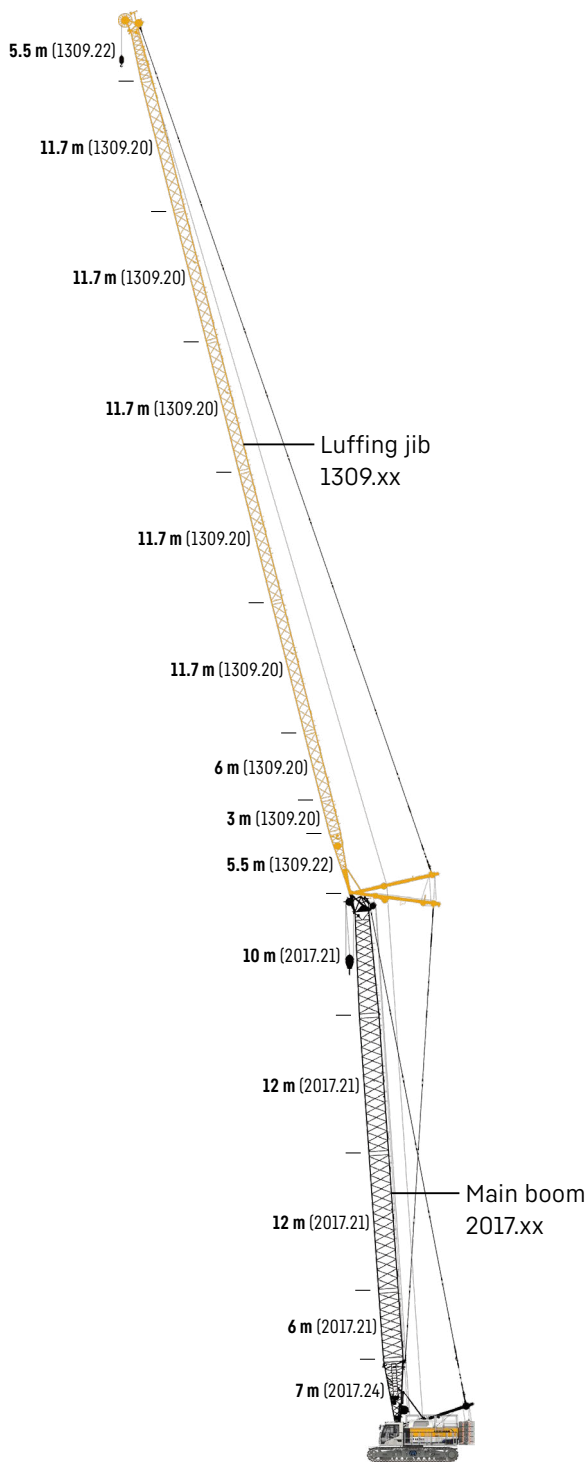
Max. combination

2017.xx m 65 68

0806.xx m 32 23

Total length m 97 91

Further information on page 26.



Main boom + luffing jib

Mode 4

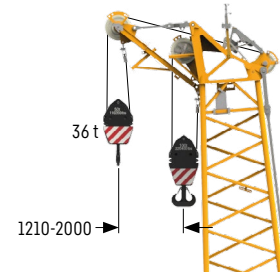
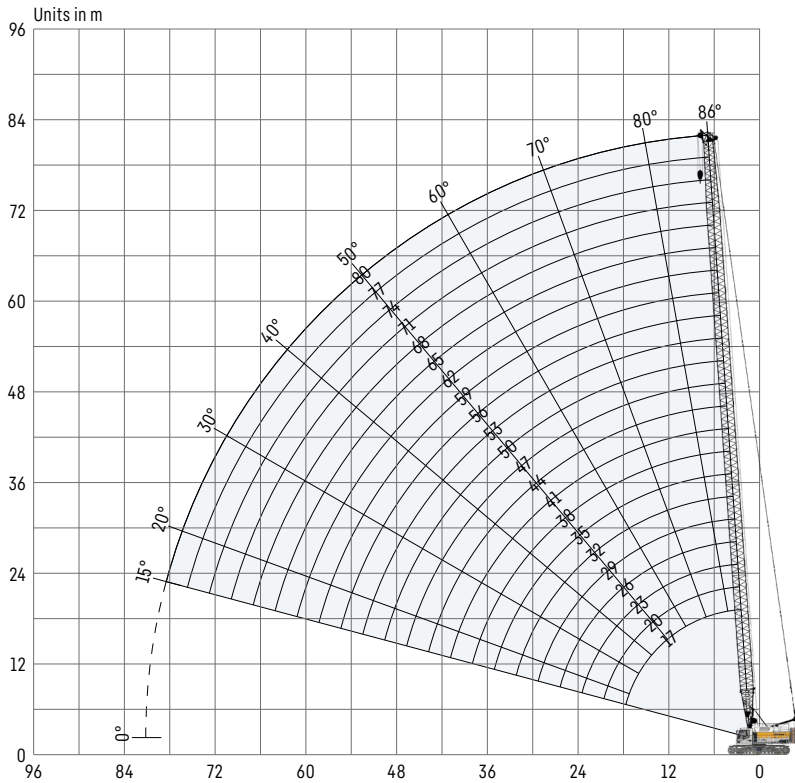
Max. combination

2017.xx	m	47	53
1309.xx	m	78.5	49.1
Total length	m	125.5	102.1

Further information on page 20.

Main boom 2017.xx

Main boom lengths 17-80 m



Auxiliary jib 36 t (option)

The maximum capacity of the auxiliary jib is 36 t. The corresponding load chart is programmed in the LML system.

Main boom configuration 2017.xx

Boom section	Amount of boom sections											
	1	1	1	1	1	1	1	1	1	1	1	1
Boom foot 7 m	1					1						
Boom section 3 m		1			1			1			1	
Boom section 6 m			1		1			1		1		1
Boom section 12 m						1	1	1	1	2	2	2
Boom head 10 m	1	1	1	1	1	1	1	1	1	1	1	1
Boom length [m]	17	20	23	26	29	32	35	38	41	44	47	
Auxiliary jib	✓	✓	✓	✓	✓	✓	✓	✓	✓	✓	✓	✓
Boom foot 7 m	1	1	1	1	1	1	1	1	1	1	1	1
Boom section 3 m	1			1	1			1		1		1
Boom section 6 m	1				1				1	1		
Boom section 12 m	2	3	3	3	3	4	4	4	4	5	5	
Boom head 10 m	1	1	1	1	1	1	1	1	1	1	1	1
Boom length [m]	50	53	56	59	62	65	68	71	74	77	80	
Auxiliary jib	✓	✓	✓	✓	✓	✓	✓	✓	✓	✓	✓	✓

Load capacities with main boom

Load capacities in [t]

	Boom length [m]											
	17	20	26	32	38	44	50	56	62	68	74	80
3.4	137.2											
4	137.2	137.2										
5	116.9	114.2	108.2	97.3	79.9							
6	98.6	97.4	92.5	88.0	75.0	62.0	52.7					
7	85.7	83.6	81.2	76.5	69.2	56.9	50.3	44.9	36.7	29.1		
8	75.0	74.2	71.2	68.4	62.5	53.0	47.5	42.9	35.6	28.9	23.9	18.9
9	66.8	66.0	63.6	61.3	57.6	49.1	44.7	41.5	34.3	27.7	23.2	18.8
10	60.5	59.5	57.8	55.3	52.8	46.2	42.0	39.5	33.2	26.7	22.4	18.0
11	54.8	54.5	52.6	50.6	48.1	43.3	40.0	37.8	31.8	25.8	21.7	17.4
12	50.3	49.9	48.1	46.7	44.2	40.2	37.9	36.4	30.6	24.7	20.9	16.9
13	46.3	45.9	44.6	43.0	41.1	37.5	35.2	35.1	29.6	23.8	20.2	16.2
14	41.9	41.9	41.5	39.8	38.3	35.2	32.9	32.6	28.8	23.1	19.5	15.6
15	38.1	38.2	38.1	37.1	35.7	33.4	30.9	30.4	27.2	22.5	19.0	15.1
16	34.9	35.0	34.9	34.8	33.4	31.4	29.1	28.4	25.7	21.6	18.5	14.7
17	32.2	32.3	32.2	32.1	31.3	29.5	27.7	26.7	24.4	20.7	17.9	14.3
18	12.1	29.9	29.8	29.7	29.5	27.9	26.2	25.3	23.2	19.9	17.3	13.8
19		27.8	27.8	27.7	27.4	26.4	24.9	24.0	22.1	19.2	16.7	13.3
20		25.9	25.9	25.8	25.6	25.1	23.6	22.8	21.2	18.6	16.2	12.9
21		12.1	24.3	24.2	24.0	23.7	22.5	21.6	20.3	18.0	15.7	12.4
22			22.8	22.7	22.5	22.3	21.5	20.5	19.3	17.5	15.2	12.0
23			21.5	21.4	21.2	21.0	20.6	19.5	18.4	16.8	14.9	11.7
24			20.3	20.2	20.0	19.8	19.5	18.7	17.6	16.1	14.5	11.4
25			19.2	19.1	18.9	18.7	18.4	17.9	16.8	15.4	14.0	11.1
26			18.1	18.1	17.9	17.7	17.4	17.1	16.1	14.8	13.4	10.8
27				17.2	17.0	16.7	16.5	16.2	15.4	14.2	12.9	10.5
28				16.3	16.1	15.9	15.6	15.4	14.8	13.6	12.4	10.2
29				15.5	15.3	15.1	14.8	14.6	14.3	13.1	12.0	9.9
30				14.8	14.6	14.4	14.1	13.9	13.6	12.6	11.6	9.6
31				14.1	13.9	13.7	13.4	13.2	12.9	12.2	11.2	9.4
32				13.5	13.3	13.1	12.8	12.6	12.3	11.8	10.8	9.1
33					12.7	12.5	12.2	12.0	11.7	11.4	10.5	8.9
34					12.1	12.0	11.7	11.5	11.1	10.8	10.2	8.7
35					11.7	11.5	11.2	11.0	10.6	10.3	9.9	8.5
36					11.2	11.0	10.7	10.5	10.1	9.8	9.5	8.3
38					10.3	10.1	9.8	9.6	9.2	8.9	8.6	7.8
40						9.3	9.0	8.8	8.5	8.1	7.8	7.2
42						8.6	8.3	8.1	7.8	7.4	7.1	6.7
44						7.9	7.7	7.4	7.1	6.8	6.5	6.1
46							7.1	6.8	6.5	6.2	5.9	5.5
48							6.5	6.3	6.0	5.7	5.3	5.0
50							6.0	5.8	5.5	5.2	4.8	4.5
52								5.3	5.0	4.7	4.4	4.1
54								4.9	4.6	4.3	4.0	3.7
56									4.2	3.9	3.6	3.3
59									3.7	3.4	3.1	2.8

Carbody counterweight: 20 t

Rear counterweight:

42.3 t 52.3 t



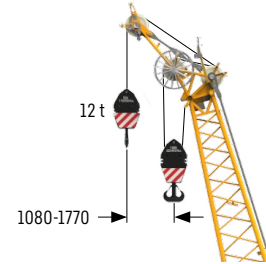
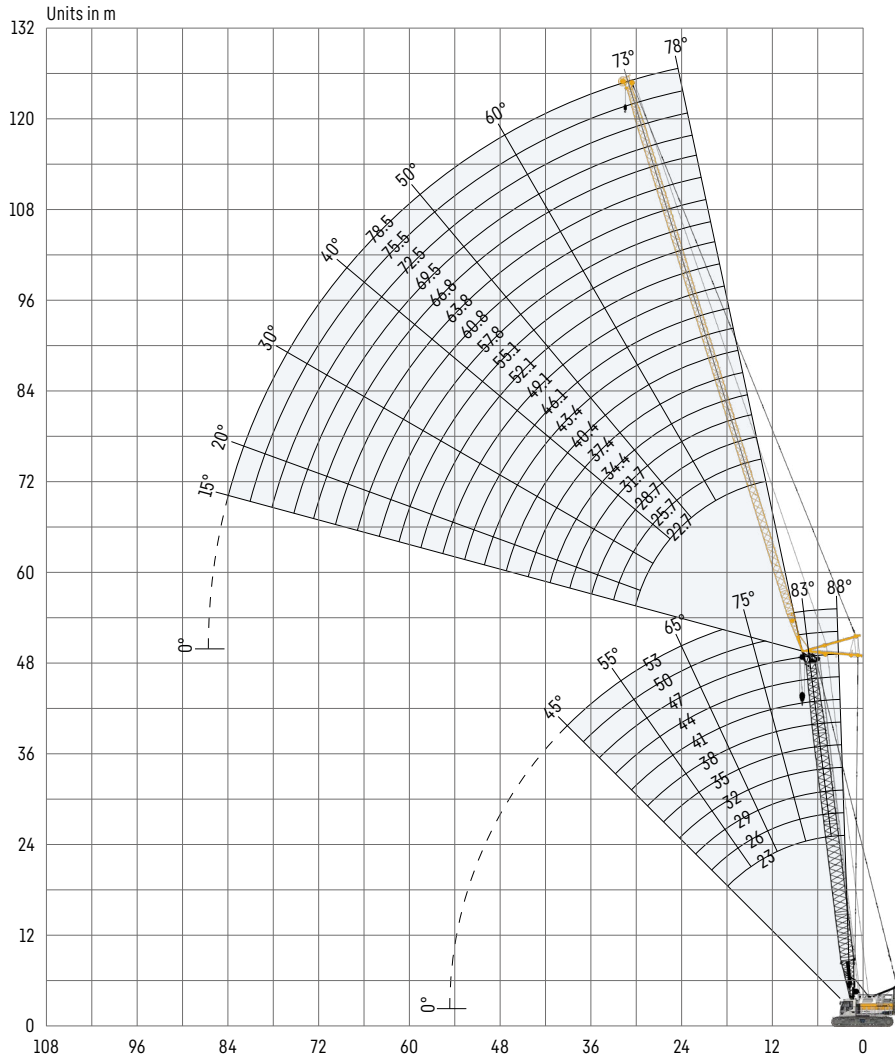
TLT 13630721 / V0. Above load charts are for reference only. For actual lift duty please refer to load chart in operator's cabin or manual. Otherwise we recommend you to plan your lifting job using Crane Planner 2.0.

www.liebherr.com/CranePlanner

Crane Planner 2.0

Luffing jib 1309.xx

Jib lengths 22.7-78.5 m



Auxiliary jib 12 t (option)
The maximum capacity of the auxiliary jib is 12 t.

Jib configuration 1309.xx

Jib section	Amount of jib sections																			
	1	1	1	1	1	1	1	1	1	1	1	1	1	1	1	1	1	1	1	1
Jib foot 5.5 m	1	1	1	1	1	1	1	1	1	1	1	1	1	1	1	1	1	1	1	1
Jib section 3 m		1		1		1		1		1		1		1		1		1		1
Jib section 6 m			1	1			1	1			1	1			1	1			1	1
Jib section 11.7 m	1	1	1	1	2	2	2	2	3	3	3	3	4	4	4	4	5	5	5	5
Jib head 5.5 m	1	1	1	1	1	1	1	1	1	1	1	1	1	1	1	1	1	1	1	1
Jib length [m]	22.7	25.7	28.7	31.7	34.4	37.4	40.4	43.4	46.1	49.1	52.1	55.1	57.8	60.8	63.8	66.8	69.5	72.5	75.5	78.5
Auxiliary jib	✓	✓	✓	✓	✓	✓	✓	✓	✓	✓	✓	✓	✓	✓	✓	✓	✓	✓	✓	✓

For main boom configuration please refer to the table on page 18.

Load capacities with luffing jib

Load capacities in [t] with 23 m main boom [88/83/75/65°]

Radius [m]	Jib length 22.7 m				Jib length 31.7 m				Jib length 43.4 m			
	88°	83°	75°	65°	88°	83°	75°	65°	88°	83°	75°	65°
8.2	43.3											
10	38.5											
12	33.2				28.0							
14	29.2	33.7			24.9				17.2			
16	25.6	29.1			22.2	25.9			16.3			
18	23.0	25.5			20.1	23.0			15.4			
22	18.8	20.5	23.4		16.6	18.6			13.3	14.7		
24	17.2	18.7	21.3		15.4	17.0	20.0		12.5	13.8		
25	16.3	18.1	20.2		14.8	16.4	19.2		12.1	13.5		
28			17.6	16.6	13.1	14.7	16.9		11.1	12.4	13.8	
30			16.1	15.2	12.4	13.7	15.8		10.6	11.6	13.3	
34				13.0	10.4	12.4	13.6	12.7	9.4	10.5	12.0	
36						11.1	12.6	11.8	8.9	9.9	11.4	
38							11.8	11.0	8.4	9.4	10.8	10.5
40								10.3	8.0	9.0	10.2	9.9
42								9.7	7.5	8.6	9.6	9.2
44									7.1	8.2	9.2	8.7
46										7.8	8.7	8.2
48											8.3	7.7
50											7.8	7.3
52												6.9
54												6.5
Radius [m]	Jib length 55.1 m				Jib length 66.8 m				Jib length 78.5 m			
	88°	83°	75°	65°	88°	83°	75°	65°	88°	83°	75°	65°
15	10.4											
18	9.8				6.5							
20	9.3				6.3				3.6			
22	8.9	9.2			6.1				3.5			
24	8.6	8.8			5.8				3.3			
26	8.3	8.6			5.6	5.8			3.2			
28	8.1	8.3			5.5	5.6			3.0			
30	7.9	8.1			5.3	5.5			2.9	3.0		
32	7.7	7.9	8.1		5.2	5.4			2.8	2.9		
35	7.4	7.7	7.9		5.1	5.2			2.7	2.8		
36	7.3	7.6	7.8		5.0	5.1			2.6	2.7		
39	7.0	7.4	7.6		4.8	4.9	5.1		2.5	2.6		
42	6.5	7.0	7.4		4.7	4.8	4.9		2.4	2.4		
45	6.1	6.7	7.1	7.3	4.6	4.7	4.8		2.3	2.3	2.4	
48	5.7	6.4	6.8	7.1	4.4	4.5	4.6		2.2	2.2	0.0	
52	5.2	6.0	6.5	6.4	4.1	4.3	4.5	4.5	2.1	2.1	2.2	
57		5.3	5.9	5.5	3.8	4.1	4.3	4.3		2.0	2.1	
59			5.6	5.3	3.6	4.0	4.2	4.3			2.0	2.0
62				4.9	3.3	3.8	4.1	4.2				
68						3.4	3.8	3.7				
73							3.1	3.2				
77								2.9				

Carbody counterweight: 20 t
 Rear counterweight:
 52.3 t



TLT 13630721 / V0. Above load charts are for reference only. For actual lift duty please refer to load chart in operator's cabin or manual. Otherwise we recommend you to plan your lifting job using Crane Planner 2.0.

www.liebherr.com/CranePlanner

Crane Planner 2.0

Load capacities with luffing jib

Load capacities in [t] with 29 m main boom [88/83/75/65°]

Radius [m]	Jib length 22.7 m				Jib length 31.7 m				Jib length 43.4 m			
	88°	83°	75°	65°	88°	83°	75°	65°	88°	83°	75°	65°
9	37.9											
11	33.0				27.0							
14	27.3	32.1			23.1				16.3			
16	24.2	28.5			20.9	24.3			15.5			
18	22.0	25.6			19.0	22.3			14.6			
21	18.5	21.8	23.6		16.5	19.2			13.1	14.4		
22	17.6	20.7	22.5		15.8	18.4			12.7	14.1		
24	15.9	18.7	20.3		14.6	16.8	18.7		11.9	13.4		
26		17.4	18.7		13.3	15.7	17.4		11.1	12.8		
28		12.1	17.2	15.8	12.2	14.7	16.0		10.5	12.2		
30			15.8	14.5	11.3	13.8	14.9		9.9	11.5	12.9	
32			12.1	13.4	10.5	13.0	14.0		9.3	11.0	12.4	
34				12.4	9.3	12.0	13.1	12.1	8.7	10.5	11.7	
36				11.6		11.0	12.3	11.2	8.0	9.9	11.0	
38							11.5	10.5	7.5	9.4	10.5	
40							10.7	9.8	0.0	0.0	0.0	
42								9.2	6.7	8.5	9.3	8.7
44								8.6	6.3	7.9	8.8	8.1
46										7.4	8.4	7.7
48										6.7	8.1	7.2
52											7.0	6.4
57												5.6
Radius [m]	Jib length 55.1 m				Jib length 66.8 m				Jib length 78.5 m			
	88°	83°	75°	65°	88°	83°	75°	65°	88°	83°	75°	65°
16	9.9											
18	9.4				6.3							
21	8.8				6.0				3.5			
23	8.5	8.7			5.8				3.3			
25	8.2	8.5			5.6				3.2			
27	8.0	8.2			5.4	5.6			3.0			
30	7.7	7.9			5.2	5.4			2.8	3.0		
35	7.1	7.5	7.8		4.9	5.1			2.6	2.7		
39	6.8	7.2	7.5		4.7	4.9	5.0		2.4	2.5		
43	5.9	6.9	7.2		4.5	4.7	4.8		2.3	2.4		
47	5.1	6.4	6.9	6.9	4.3	4.5	4.6		2.2	2.2	2.3	
53	4.3	5.7	6.3	5.8	3.6	4.2	4.4		2.0	2.1	2.1	
55	4.0	5.3	6.2	5.4	3.4	4.1	4.3	4.4		2.0	2.1	
57		5.0	5.9	5.1	3.2	4.0	4.2	4.3			2.0	
60			5.4	4.7	2.9	3.9	4.1	4.2				
62			5.1	4.5	2.7	3.7	4.1	4.0				
64				4.2	2.5	3.5	4.0	3.8				
66				4.0	2.3	3.3	3.9	3.5				
68				3.8	2.1	3.1	3.8	3.3				
70						2.8	3.7	3.2				
72							3.6	3.0				
74							3.4	2.8				

Carbody counterweight: 20 t
 Rear counterweight:
 52.3 t



TLT 13630721 / V0. Above load charts are for reference only. For actual lift duty please refer to load chart in operator's cabin or manual. Otherwise we recommend you to plan your lifting job using Crane Planner 2.0.

www.liebherr.com/CranePlanner

Crane Planner 2.0

Load capacities with luffing jib

Load capacities in [t] with 35 m main boom [88/83/75/65°]

Radius [m]	Jib length 22.7 m				Jib length 31.7 m				Jib length 43.4 m			
	88°	83°	75°	65°	88°	83°	75°	65°	88°	83°	75°	65°
9	34.1											
11	30.0				24.5							
14	25.3	28.0			21.2				15.1			
16	22.8	25.0			19.4				14.4			
18	20.7	22.5			17.7	19.3			13.5			
22	16.6	18.5	19.8		14.7	16.2			11.8	12.8		
24	15.1	17.1	18.0		13.6	14.9			11.1	12.0		
26		16.0	16.7		12.4	13.9	14.9		10.4	11.2		
28		14.9	15.6		11.3	13.1	14.0		9.7	10.7		
30			14.8		10.5	12.4	13.2		9.2	10.2		
32			14.1	12.7	10.0	11.8	12.5		8.7	9.7	10.5	
34				11.8	9.4	11.3	11.8		8.1	9.3	10.0	
36				10.9			0.0		7.5	8.9	9.5	
38				10.2			10.8	9.8	7.1	8.5	9.0	
40							10.4	9.2	6.7	8.2	8.7	
42							9.7	8.6	6.3	7.9	8.3	
44								8.1	6.0	7.5	7.9	7.6
46								7.6		7.1	7.6	7.1
48								7.1		6.6	7.4	6.7
50											7.1	6.3
54												5.6
59												4.9
Radius [m]	Jib length 55.1 m				Jib length 66.8 m				Jib length 78.5 m			
	88°	83°	75°	65°	88°	83°	75°	65°	88°	83°	75°	65°
16	9.4											
18	9.0				6.0							
21	8.4				5.8				3.3			
24	8.0	8.3			5.5				3.1			
27	7.7	8.0			5.2	5.4			2.9			
30	7.4	7.7			5.0	5.2			2.8	2.9		
33	6.9	7.5			4.9	5.0			2.7	2.8		
35	6.6	7.2			4.8	4.9			2.5	2.7		
37	6.4	7.0	7.3		4.7	4.8			2.5	2.6		
39	6.2	6.8	7.2		4.5	4.7			2.4	2.5		
41	5.8	6.6	7.0		4.4	4.6	4.7		2.3	2.4		
44	5.2	6.2	6.7		4.3	4.5	4.6		2.2	2.3		
47	4.8	5.9	6.4		4.1	4.4	4.5		2.1	2.2	2.3	
50	4.4	5.6	6.0	5.8	3.7	4.2	4.4		2.0	2.1	2.2	
53	4.0	5.2	5.7	5.3	3.3	4.0	4.3			2.0	2.1	
57	3.4	4.7	5.3	4.7	2.9	3.8	4.1	4.0			2.0	
60		4.1	5.0	4.3	2.6	3.6	3.9	3.7				
64			4.6	3.8	2.3	3.2	3.6	3.3				
67				3.5	2.0	3.0	3.5	3.0				
70				3.2		2.7	3.3	2.7				
74							3.1	2.4				
79								2.1				

Carbody counterweight: 20 t

Rear counterweight:

52.3 t



TLT 13630721 / V0. Above load charts are for reference only. For actual lift duty please refer to load chart in operator's cabin or manual. Otherwise we recommend you to plan your lifting job using Crane Planner 2.0.

www.liebherr.com/CranePlanner

Crane Planner 2.0

Load capacities with luffing jib

Load capacities in [t] with 44 m main boom [88/83/75/65°]

Radius [m]	Jib length 22.7 m				Jib length 31.7 m				Jib length 43.4 m			
	88°	83°	75°	65°	88°	83°	75°	65°	88°	83°	75°	65°
9	27.0											
11	24.4				19.8							
14	20.3				17.4				13.1			
16	18.2	19.0			15.8				12.3			
18	16.4	17.0			14.2	14.8			11.4			
20	15.0	15.4			13.0	13.4			10.6			
22	13.8	14.0			11.9	12.1			9.8	10.1		
25	12.4	12.6	13.1		10.7	10.8			9.0	9.1		
27		11.9	12.1		10.0	10.1			8.5	8.5		
30			11.0		9.2	9.3	9.6		7.9	7.9		
33			10.1		8.5	8.7	8.8		7.3	7.3	7.6	
35			9.7	10.2		8.4	8.4		6.9	7.0	7.2	
38				9.2		7.8	7.7		6.3	6.6	6.7	
40				8.6			7.4	8.1	6.0	6.3	6.4	
43				7.8			7.0	7.4	5.6	6.0	5.9	
47								6.5		5.5	5.4	5.8
50								5.9			5.1	5.4
52								5.6			4.9	5.1
55											4.7	4.7
58												4.3
60												4.1
63												3.7
Radius [m]	Jib length 55.1 m				Jib length 66.8 m				Jib length 78.5 m			
	88°	83°	75°	65°	88°	83°	75°	65°	88°	83°	75°	65°
16	8.5											
18	8.2											
21	7.7				5.3				3.1			
23	7.3				5.2				3.0			
25	7.0	7.1			5.0				2.9			
27	6.7	6.8			4.9				2.8			
30	6.4	6.4			4.6	4.7			2.6			
35	5.7	5.7			4.3	4.3			2.4	2.6		
39	5.3	5.2	5.4		4.0	4.0			2.3	2.4		
43	4.7	4.8	5.0		3.6	3.6	3.6		2.1	2.2		
47	4.2	4.4	4.5		3.4	3.3	3.4		2.0	2.1		
48	4.1	4.3	4.4		3.3	3.2	3.4			2.0	2.1	
52	3.7	4.0	4.0		2.8	3.0	3.1				2.0	
54	3.5	3.8	3.8	4.1	2.7	2.8	2.9					
57	3.1	3.6	3.6	3.7	2.4	2.6	2.7					
59		3.4	3.4	3.5	2.3	2.5	2.6					
61		3.0	3.3	3.3	2.1	2.4	2.4	2.6				
63			3.2	3.1		2.3	2.3	2.4				
65			3.0	2.9		2.2	2.2	2.3				
66			3.0	2.8		2.1	2.1	2.2				
68				2.7		2.0	2.0	2.0				
74				2.3								

Carbody counterweight: 20 t
 Rear counterweight:
 52.3 t



TLT 13630721 / V0. Above load charts are for reference only. For actual lift duty please refer to load chart in operator's cabin or manual. Otherwise we recommend you to plan your lifting job using Crane Planner 2.0.

www.liebherr.com/CranePlanner

Crane Planner 2.0

Load capacities with luffing jib

Load capacities in [t] with 53 m main boom [88/83/75/65°]

Radius [m]	Jib length 22.7 m				Jib length 31.7 m				Jib length 43.4 m			
	88°	83°	75°	65°	88°	83°	75°	65°	88°	83°	75°	65°
10	20.4											
12	18.1				15.0							
14	16.2				13.5				10.4			
17	14.0	14.2			11.7				9.4			
19	12.8	12.8			10.7	10.7			8.7			
21	11.8	11.6			9.9	9.8			8.1			
23	11.1	10.7			9.1	8.9			7.5	7.4		
25	10.4	10.1			8.6	8.3			7.1	6.9		
27		9.6	8.8		8.2	7.8			6.7	6.5		
29		9.1	8.2		7.8	7.4			6.4	6.1		
31		7.8	7.8		7.5	7.1	6.5		6.1	5.8		
35			7.0		5.9	6.6	5.8		5.5	5.1		
39				7.4		6.0	5.2		5.2	4.9	4.3	
42				6.9			4.8		4.9	4.6	3.9	
45				6.3			4.7	5.3	4.6	4.4	3.7	
48								5.0		4.1	3.4	
50								4.8		3.9	3.2	3.8
54								4.4			3.0	3.5
57											2.9	3.3
59												3.2
62												2.9
67												2.5
Radius [m]	Jib length 55.1 m											
	88°	83°	75°	65°								
15	8.7											
18	8.0											
20	7.4											
22	7.0											
24	6.5	6.3										
26	6.2	6.0										
28	5.9	5.7										
30	5.6	5.3										
33	5.2	5.0										
35	5.0	4.7										
37	4.8	4.5										
40	4.5	4.2	3.7									
42	4.3	4.0	3.5									
45	4.1	3.8	3.2									
47	3.9	3.7	3.1									
50	3.6	3.5	2.8									
52		3.4	2.7									
55		3.1	2.5	3.0								
58			2.4	2.8								
60			2.3	2.7								
64				2.4								
69				2.0								

Carbody counterweight: 20 t
 Rear counterweight:
 52.3 t

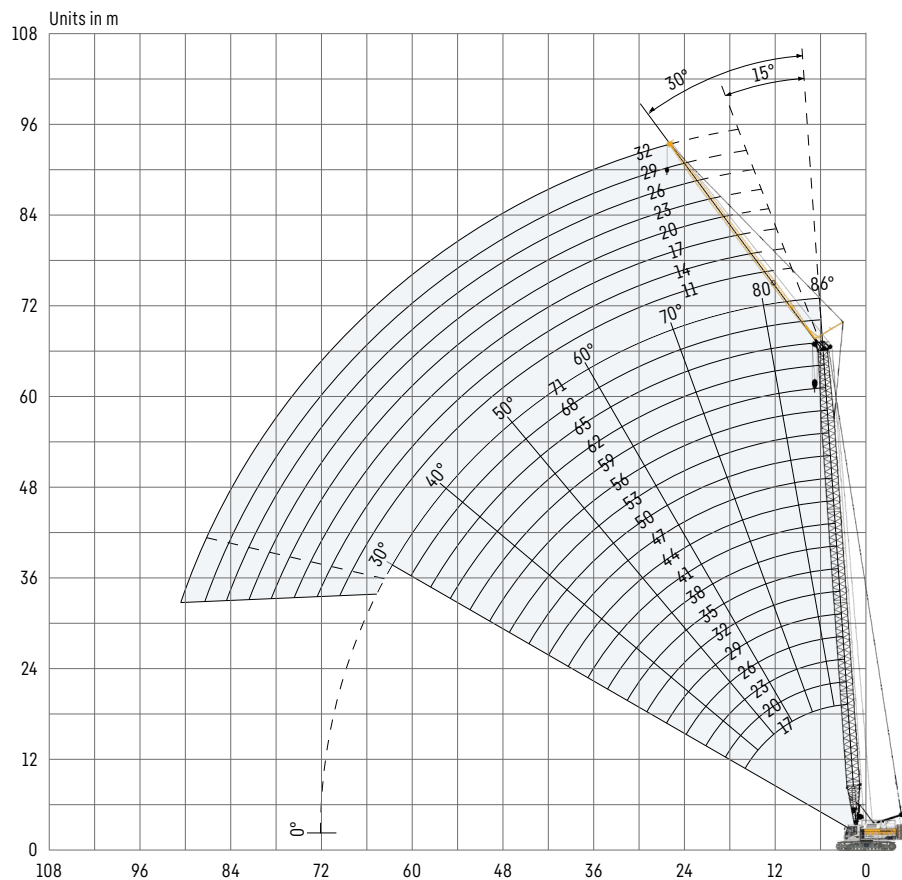


TLT 13630721 / V0. Above load charts are for reference only. For actual lift duty please refer to load chart in operator's cabin or manual. Otherwise we recommend you to plan your lifting job using Crane Planner 2.0.

www.liebherr.com/CranePlanner
Crane Planner 2.0

Fixed jib 0806.xx

Jib lengths 11-32 m



Jib configuration 0806.xx

Jib section	Amount of jib sections							
	11	14	17	20	23	26	29	32
Jib foot 5.5 m	1	1	1	1	1	1	1	1
Jib section 3 m		1		1		1		1
Jib section 6 m			1	1	2	2	3	3
Jib head 5.5 m	1	1	1	1	1	1	1	1
Jib length [m]	11	14	17	20	23	26	29	32

For main boom configuration please refer to the table on page 18.

Load capacities with fixed jib

Load capacities in [t] with 17 m main boom

	Jib length 11 m		Jib length 14 m		Jib length 20 m		Jib length 26 m		Jib length 32 m	
	15°	30°	15°	30°	15°	30°	15°	30°	15°	30°
5.5	24.0									
8	23.1	20.3	16.8							
10	22.0	19.4	15.2		11.1					
12	20.8	18.8	14.9	13.1	10.5		7.7			
14	19.8	17.9	14.0	12.6	10.0	9.0	7.4			
16	19.0	17.1	13.4	12.1	9.6	8.6	7.0		5.3	
18	18.4	16.6	12.7	11.7	9.1	8.3	6.7	6.3	5.0	
22	16.9	15.1	11.8	11.0	8.4	7.9	6.2	5.9	4.6	4.2
26	15.1	13.7	11.1	10.7	7.9	7.5	5.9	5.6	4.2	3.9
30			10.8	10.3	7.6	7.1	5.5	5.4	3.9	3.7
35					7.2	6.9	5.2	5.2	3.6	3.5
40							5.1	5.0	3.4	3.3
42							5.0	5.0	3.3	3.2
49										3.2

Load capacities in [t] with 29 m main boom

	Jib length 11 m		Jib length 14 m		Jib length 20 m		Jib length 26 m		Jib length 32 m	
	15°	30°	15°	30°	15°	30°	15°	30°	15°	30°
7	23.2									
10	22.5	19.2	16.2		11.0					
12	21.7	18.0	15.5	13.3	10.6					
14	20.6	16.9	14.9	13.0	10.3		7.4			
16	19.1	16.1	14.3	12.5	9.9	8.7	7.1		5.2	
22	16.0	14.0	12.9	11.7	9.0	8.0	6.5	6.0	4.7	4.2
26	14.3	13.0	12.3	10.9	8.4	7.8	6.1	5.8	4.4	4.0
30	12.5	11.4	10.9	10.1	8.0	7.6	5.8	5.5	4.1	3.8
35	11.4	10.6	9.6	8.8	7.3	7.1	5.5	5.4	3.8	3.6
40			9.0	8.5	6.8	6.4	5.3	5.2	3.6	3.4
45					6.4	6.2	5.1	4.8	3.4	3.3
50							4.8	4.7	3.3	3.2
53							4.6	4.6	3.3	3.2
59									3.0	3.2

Load capacities in [t] with 44 m main boom

	Jib length 11 m		Jib length 14 m		Jib length 20 m		Jib length 26 m		Jib length 32 m	
	15°	30°	15°	30°	15°	30°	15°	30°	15°	30°
7	21.1									
10	19.2	16.9	16.0							
12	18.1	16.2	15.5	13.3	10.4					
18	14.3	14.4	14.2	11.9	9.6	8.4	6.7		4.8	
20	13.2	13.8	13.4	11.5	9.4	8.2	6.5	6.0	4.7	
25	11.1	12.0	11.8	10.6	8.9	7.9	6.2	5.7	4.4	4.0
30	9.3	10.0	10.0	9.9	8.5	7.4	5.9	5.6	4.2	3.8
35	8.4	8.6	8.8	9.1	8.0	7.0	5.6	5.3	3.9	3.7
40	7.5	7.5	7.7	7.9	7.5	6.6	5.4	5.1	3.7	3.5
45	6.1	6.3	6.8	6.8	6.8	6.2	5.2	4.9	3.6	3.4
50	4.6	4.6	5.2	5.3	6.3	5.7	4.9	4.6	3.4	3.3
60					3.8	3.8	4.0	3.9	3.2	3.2
67									2.9	3.1
72									2.7	2.8

Carbody counterweight: 20 t

Rear counterweight:

52.3 t

TLT 13630721 / V0. Above load charts are for reference only. For actual lift duty please refer to load chart in operator's cabin or manual. Otherwise we recommend you to plan your lifting job using Crane Planner 2.0.

Load capacities with fixed jib

Load capacities in [t] with 56 m main boom

	Jib length 11 m		Jib length 14 m		Jib length 20 m		Jib length 26 m		Jib length 32 m	
	15°	30°	15°	30°	15°	30°	15°	30°	15°	30°
7	17.0									
10	16.1	15.2	14.3							
12	14.9	14.6	13.9	12.0	9.5					
18	12.6	12.7	12.3	10.8	9.2	8.0	5.9		4.2	
20	12.0	12.1	11.8	10.3	9.1	7.7	5.9	5.6	4.2	
25	10.4	10.7	10.5	9.5	8.7	7.1	5.7	5.5	4.0	3.8
30	8.6	9.5	9.3	8.8	7.9	6.6	5.5	5.2	3.9	3.7
35	6.7	7.2	7.3	7.5	7.2	6.1	5.4	4.8	3.8	3.6
40	5.4	5.6	5.8	5.9	6.1	5.7	5.2	4.6	3.7	3.5
45	4.2	4.4	4.6	4.8	5.3	5.2	4.9	4.3	3.5	3.4
50	3.4	3.5	3.7	3.8	4.3	4.6	4.7	4.1	3.4	3.3
60					2.6	2.9	3.0	3.2	2.9	3.0
67								2.5	2.4	2.6
74										2.0

Load capacities in [t] with 71 m main boom

	Jib length 11 m		Jib length 14 m						
	15°	30°	15°	30°					
8	12.6								
12	11.1	11.5	10.4	10.3					
14	10.3	10.9	9.9	10.1					
18	9.0	9.5	8.9	9.2					
20	8.4	8.8	8.2	8.9					
24	7.5	7.7	7.5	7.8					
26	7.0	7.3	7.0	7.3					
28	6.6	6.8	6.6	6.9					
30	6.2	6.3	6.2	6.4					
34	5.2	5.6	5.5	5.7					
36	4.4	5.0	5.0	5.4					
40	2.9	3.5	3.5	4.2					
42	2.3	2.9	2.8	3.5					
46				2.2					

Carbody counterweight: 20 t

Rear counterweight:

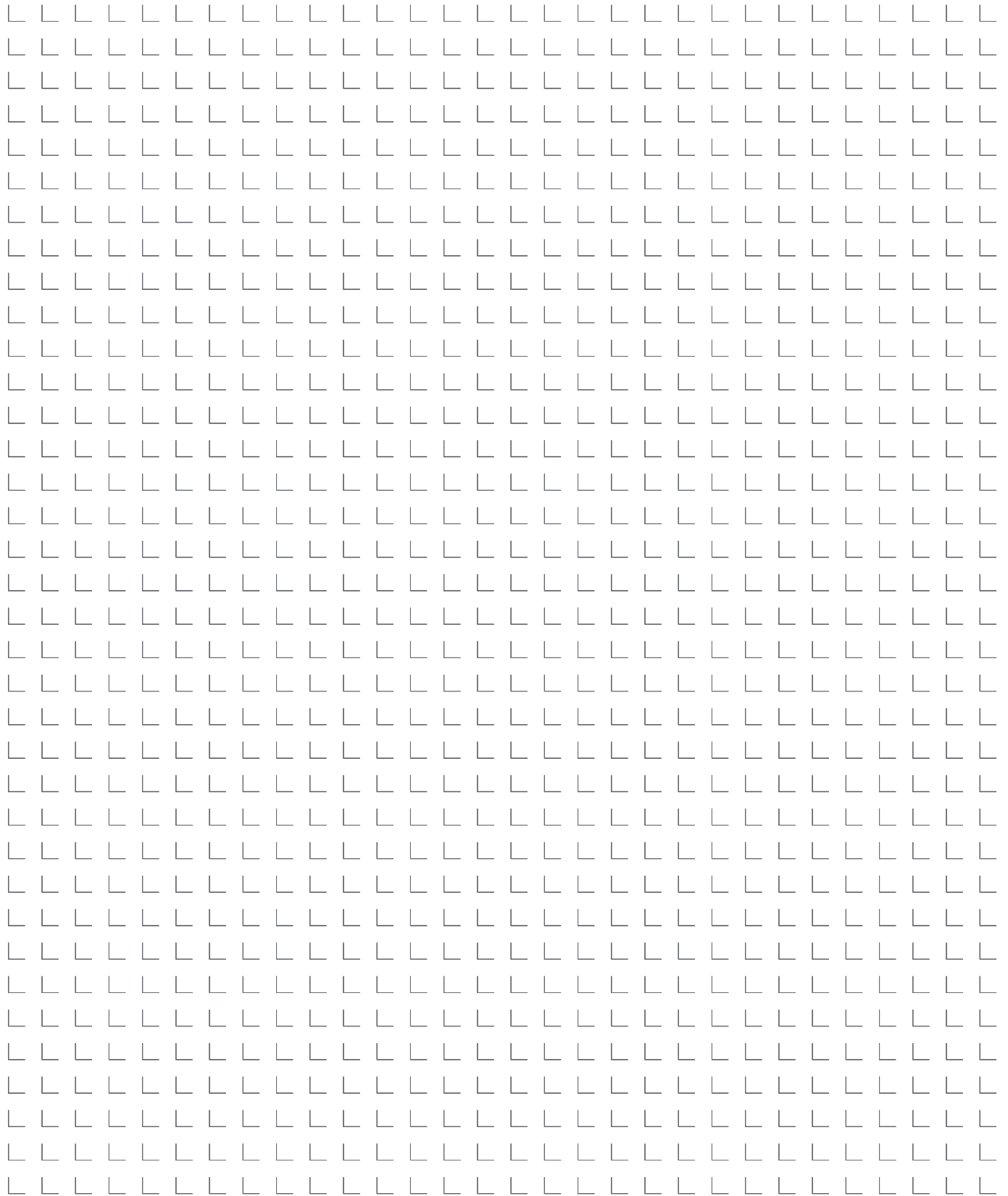
52.3 t

TLT 13630721 / V0. Above load charts are for reference only. For actual lift duty please refer to load chart in operator's cabin or manual. Otherwise we recommend you to plan your lifting job using Crane Planner 2.0.



www.liebherr.com/CranePlanner

Crane Planner 2.0





Download datasheet



Please contact us.

Liebherr-Werk Nenzing GmbH · Dr. Hans Liebherr Str. 1 · 6710 Nenzing, Austria
Phone +43 50809 41-473 · crawler.crane@liebherr.com · www.liebherr.com
facebook.com/LiebherrConstruction